



**VOTER TURNOUT  
SUMMARY REPORT  
2003 PRIMARY ELECTION**

Monroe County Board of Elections  
39 West Main Street, Rochester, New York 14614

**April 19, 2004**

Peter M. Quinn  
Commissioner of Elections

Thomas F. Ferrarese  
Commissioner of Elections

# **GENERAL SUMMARY**

2003 PRIMARY ELECTION  
VOTER TURNOUT BY GENDER

LT/LD SUMMARY

LEGISLATIVE DISTRICT OR TOWN	TOTAL VOTERS			MALES			FEMALES		
	VOTED	REGISTERED	TURNOUT	VOTED	REGISTERED	TURNOUT	VOTED	REGISTERED	TURNOUT
<b>CITY</b>									
Leg. Dist. 06	133	1,078	12.3	50	411	12.2	83	667	12.4
Leg. Dist. 07	121	601	20.1	48	217	22.1	73	384	19.0
Leg. Dist. 21	837	6,770	12.4	329	2,594	12.7	508	4,176	12.2
Leg. Dist. 22	738	6,793	10.9	260	2,645	9.8	478	4,148	11.5
Leg. Dist. 23	1,063	5,569	19.1	467	2,354	19.8	596	3,215	18.5
Leg. Dist. 24	667	3,361	19.8	271	1,371	19.8	396	1,990	19.9
Leg. Dist. 25	1,112	6,956	16.0	406	2,846	14.3	706	4,110	17.2
Leg. Dist. 26	321	3,085	10.4	136	1,217	11.2	185	1,868	9.9
Leg. Dist. 27	1,408	8,768	16.1	503	3,419	14.7	905	5,349	16.9
Leg. Dist. 28	457	4,891	9.3	187	1,833	10.2	270	3,058	8.8
Leg. Dist. 29	725	6,372	11.4	254	2,406	10.6	471	3,966	11.9
<b>CITY TOTAL:</b>	<b>7,582</b>	<b>54,244</b>	<b>14.0</b>	<b>2,911</b>	<b>21,313</b>	<b>13.7</b>	<b>4,671</b>	<b>32,931</b>	<b>14.2</b>
<b>TOWNS</b>									
Chili	2,190	7,646	28.6	1,127	3,863	29.2	1,063	3,783	28.1
Hamlin	807	2,393	33.7	425	1,238	34.3	382	1,155	33.1
Henrietta	2,525	7,129	35.4	1,321	3,631	36.4	1,204	3,498	34.4
Irondequoit	6	549	1.1	1	292	0.3	5	257	1.9
Penfield	3,049	9,402	32.4	1,605	4,811	33.4	1,444	4,591	31.5
<b>TOWNS TOTAL:</b>	<b>8,577</b>	<b>27,119</b>	<b>31.6</b>	<b>4,479</b>	<b>13,835</b>	<b>32.4</b>	<b>4,098</b>	<b>13,284</b>	<b>30.8</b>
<b>Grand Total:</b>	<b>16,159</b>	<b>81,363</b>	<b>19.9</b>	<b>7,390</b>	<b>35,148</b>	<b>21.0</b>	<b>8,769</b>	<b>46,215</b>	<b>19.0</b>

2003 PRIMARY ELECTION  
VOTER TURNOUT BY PARTY

LT/LD SUMMARY

LEGISLATIVE DISTRICT OR TOWN	REPUBLICAN			DEMOCRATIC			CONSERVATIVE		
	VOTED	REGISTERED	TURNOUT	VOTED	REGISTERED	TURNOUT	VOTED	REGISTERED	TURNOUT
<b>CITY</b>									
Leg. Dist. 06	0	0	0.0	133	1,078	12.3	0	0	0.0
Leg. Dist. 07	0	0	0.0	121	601	20.1	0	0	0.0
Leg. Dist. 21	0	0	0.0	837	6,770	12.4	0	0	0.0
Leg. Dist. 22	0	0	0.0	738	6,793	10.9	0	0	0.0
Leg. Dist. 23	0	0	0.0	1,063	5,569	19.1	0	0	0.0
Leg. Dist. 24	0	0	0.0	667	3,361	19.8	0	0	0.0
Leg. Dist. 25	0	0	0.0	1,112	6,956	16.0	0	0	0.0
Leg. Dist. 26	0	0	0.0	321	3,085	10.4	0	0	0.0
Leg. Dist. 27	0	0	0.0	1,408	8,768	16.1	0	0	0.0
Leg. Dist. 28	0	0	0.0	457	4,891	9.3	0	0	0.0
Leg. Dist. 29	0	0	0.0	725	6,372	11.4	0	0	0.0
<b>CITY TOTAL:</b>	<b>0</b>	<b>0</b>	<b>0.0</b>	<b>7,582</b>	<b>54,244</b>	<b>14.0</b>	<b>0</b>	<b>0</b>	<b>0.0</b>
<b>TOWNS</b>									
Chili	2,034	7,182	28.3	0	0	0.0	156	464	33.6
Hamlin	807	2,393	33.7	0	0	0.0	0	0	0.0
Henrietta	2,525	7,129	35.4	0	0	0.0	0	0	0.0
Irondequoit	2	549	0.4	0	0	0.0	0	0	0.0
Penfield	3,049	9,402	32.4	0	0	0.0	0	0	0.0
<b>TOWNS TOTAL:</b>	<b>8,417</b>	<b>26,655</b>	<b>31.6</b>	<b>0</b>	<b>0</b>	<b>0.0</b>	<b>156</b>	<b>464</b>	<b>33.6</b>
<b>Grand Total:</b>	<b>8,417</b>	<b>26,655</b>	<b>31.6</b>	<b>7,582</b>	<b>54,244</b>	<b>14.0</b>	<b>156</b>	<b>464</b>	<b>33.6</b>

2003 PRIMARY ELECTION  
VOTER TURNOUT BY AGE

LT/LD SUMMARY  
Part 1 of 2

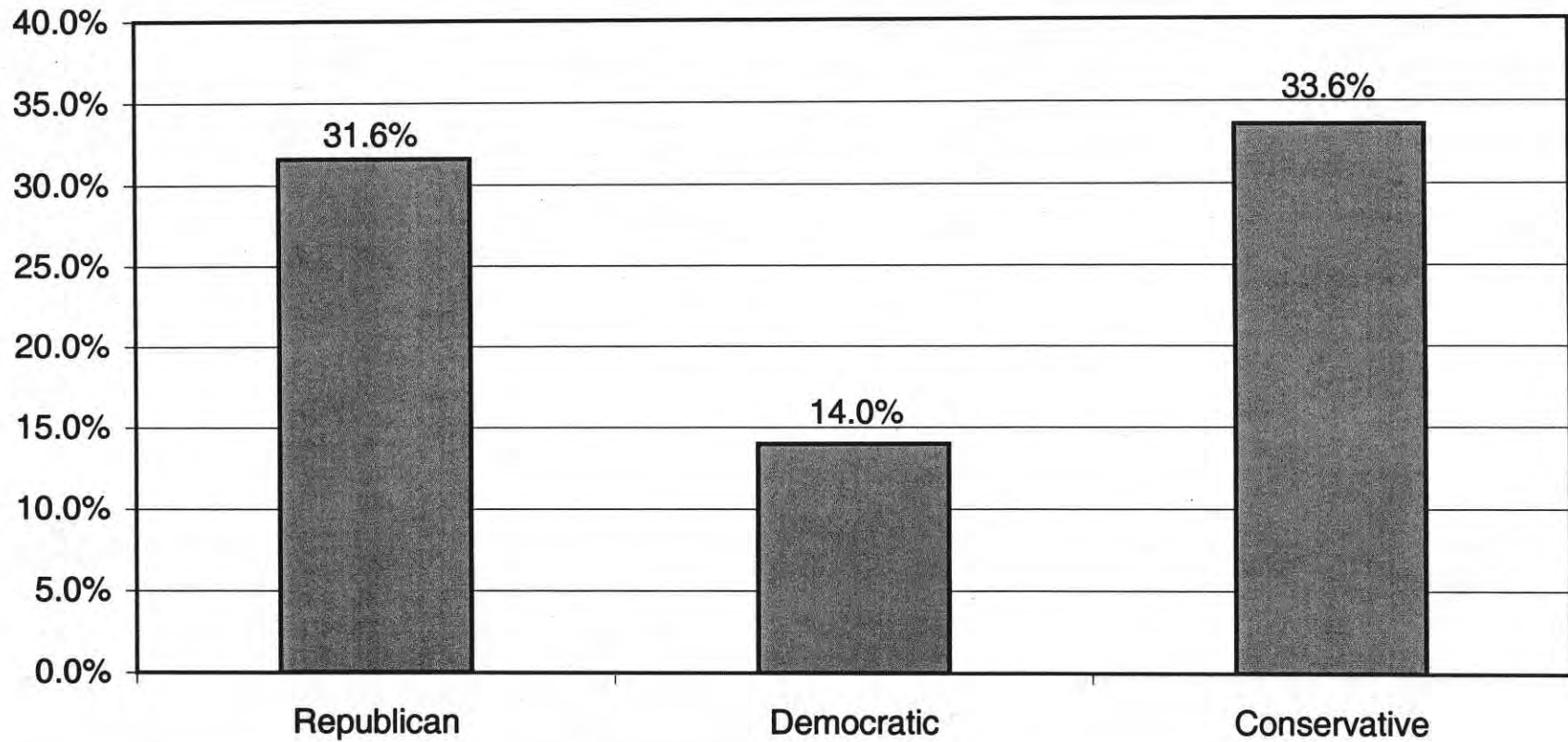
LEGISLATIVE DISTRICT OR TOWN	NDOB			18-24			25-34			35-44		
	VOTED	REGISTERED	TURNOUT	VOTED	REGISTERED	TURNOUT	VOTED	REGISTERED	TURNOUT	VOTED	REGISTERED	TURNOUT
<b>CITY</b>												
Leg. Dist. 06	5	32	15.6	4	105	3.8	6	202	3.0	25	241	10.4
Leg. Dist. 07	3	15	20.0	2	42	4.8	1	89	1.1	9	104	8.7
Leg. Dist. 21	40	180	22.2	21	839	2.5	87	1,553	5.6	169	1,556	10.9
Leg. Dist. 22	17	84	20.2	33	961	3.4	62	1,447	4.3	166	1,613	10.3
Leg. Dist. 23	40	123	32.5	34	850	4.0	96	1,350	7.1	195	1,061	18.4
Leg. Dist. 24	20	78	25.6	14	367	3.8	57	677	8.4	142	699	20.3
Leg. Dist. 25	30	95	31.6	29	926	3.1	106	1,437	7.4	194	1,529	12.7
Leg. Dist. 26	10	55	18.2	15	417	3.6	31	736	4.2	56	659	8.5
Leg. Dist. 27	34	121	28.1	51	1,030	5.0	144	1,857	7.8	293	2,154	13.6
Leg. Dist. 28	14	102	13.7	17	708	2.4	37	1,033	3.6	87	1,123	7.7
Leg. Dist. 29	23	177	13.0	22	879	2.5	50	1,248	4.0	131	1,385	9.5
<b>CITY TOTAL:</b>	<b>236</b>	<b>1,062</b>	<b>22.2</b>	<b>242</b>	<b>7,124</b>	<b>3.4</b>	<b>677</b>	<b>11,629</b>	<b>5.8</b>	<b>1,467</b>	<b>12,124</b>	<b>12.1</b>
<b>TOWNS</b>												
Chili	165	395	41.8	48	599	8.0	164	1,278	12.8	401	1,692	23.7
Hamlin	15	25	60.0	24	199	12.1	68	373	18.2	175	617	28.4
Henrietta	49	89	55.1	66	541	12.2	242	1,216	19.9	493	1,536	32.1
Irondequoit	0	48	0.0	0	25	0.0	0	71	0.0	1	104	1.0
Penfield	191	363	52.6	54	519	10.4	243	1,387	17.5	595	2,286	26.0
<b>TOWNS TOTAL:</b>	<b>420</b>	<b>920</b>	<b>45.7</b>	<b>192</b>	<b>1,883</b>	<b>10.2</b>	<b>717</b>	<b>4,325</b>	<b>16.6</b>	<b>1,665</b>	<b>6,235</b>	<b>26.7</b>
<b>Grand Total:</b>	<b>656</b>	<b>1,982</b>	<b>33.1</b>	<b>434</b>	<b>9,007</b>	<b>4.8</b>	<b>1,394</b>	<b>15,954</b>	<b>8.7</b>	<b>3,132</b>	<b>18,359</b>	<b>17.1</b>

2003 PRIMARY ELECTION  
VOTER TURNOUT BY AGE

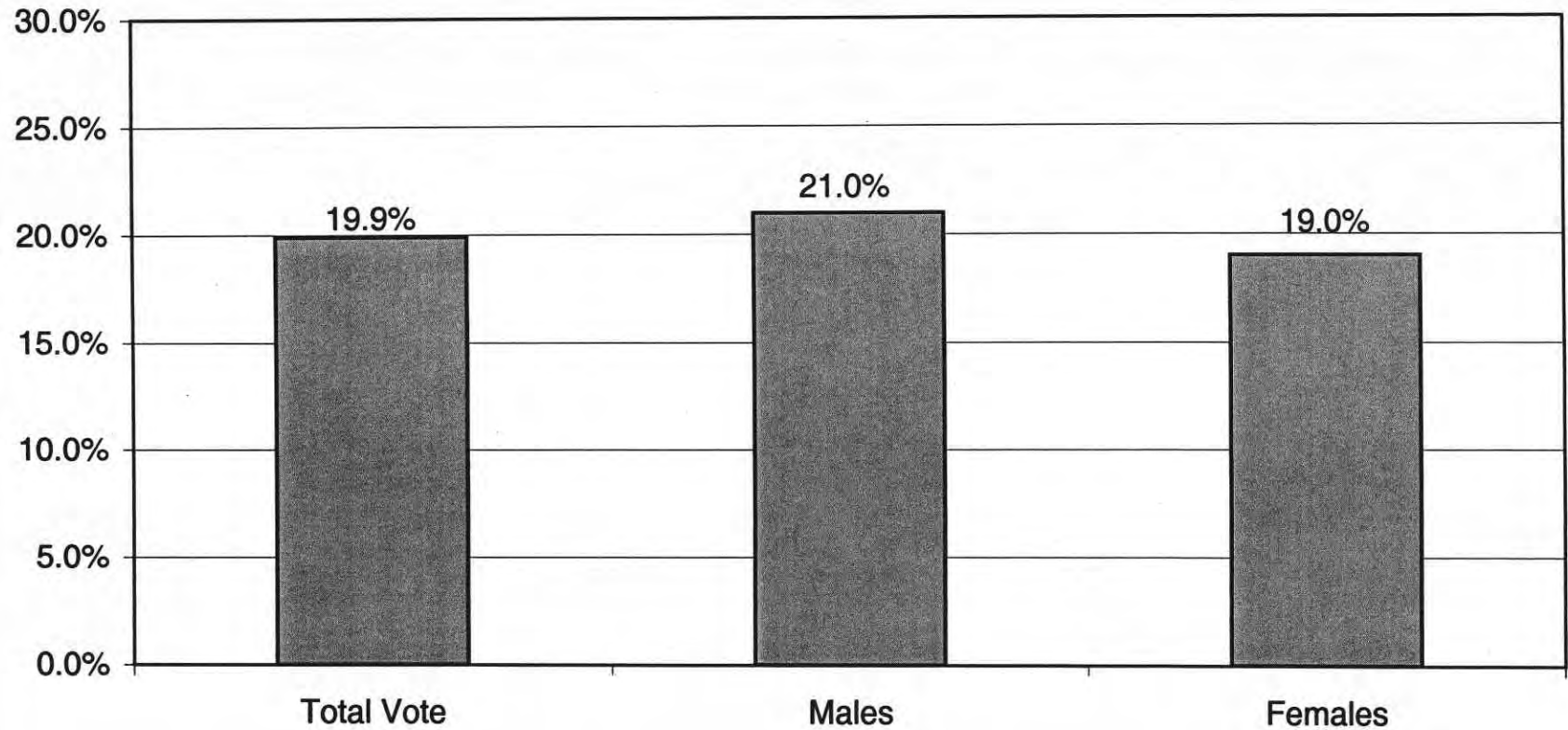
LT/LD SUMMARY  
Part 2 of 2

LEGISLATIVE DISTRICT OR TOWN	45-54			55-64			65+		
	VOTED	REGISTERED	TURNOUT	VOTED	REGISTERED	TURNOUT	VOTED	REGISTERED	TURNOUT
<b>CITY</b>									
Leg. Dist. 06	40	199	20.1	25	116	21.6	28	183	15.3
Leg. Dist. 07	34	138	24.6	25	83	30.1	47	130	36.2
Leg. Dist. 21	216	1,337	16.2	154	681	22.6	150	624	24.0
Leg. Dist. 22	193	1,307	14.8	146	795	18.4	121	586	20.6
Leg. Dist. 23	304	1,101	27.6	238	652	36.5	156	432	36.1
Leg. Dist. 24	210	759	27.7	115	365	31.5	109	416	26.2
Leg. Dist. 25	239	1,221	19.6	231	875	26.4	283	873	32.4
Leg. Dist. 26	84	622	13.5	58	306	19.0	67	290	23.1
Leg. Dist. 27	392	1,758	22.3	301	1,127	26.7	193	721	26.8
Leg. Dist. 28	101	886	11.4	96	532	18.0	105	507	20.7
Leg. Dist. 29	167	1,152	14.5	140	741	18.9	192	790	24.3
<b>CITY TOTAL:</b>	<b>1,980</b>	<b>10,480</b>	<b>18.9</b>	<b>1,529</b>	<b>6,273</b>	<b>24.4</b>	<b>1,451</b>	<b>5,552</b>	<b>26.1</b>
<b>TOWNS</b>									
Chili	410	1,364	30.1	435	1,021	42.6	567	1,297	43.7
Hamlin	210	541	38.8	175	354	49.4	140	284	49.3
Henrietta	456	1,268	36.0	531	1,089	48.8	688	1,390	49.5
Irondequoit	3	93	3.2	1	78	1.3	1	130	0.8
Penfield	564	1,731	32.6	601	1,311	45.8	801	1,805	44.4
<b>TOWNS TOTAL:</b>	<b>1,643</b>	<b>4,997</b>	<b>32.9</b>	<b>1,743</b>	<b>3,853</b>	<b>45.2</b>	<b>2,197</b>	<b>4,906</b>	<b>44.8</b>
<b>Grand Total:</b>	<b>3,623</b>	<b>15,477</b>	<b>23.4</b>	<b>3,272</b>	<b>10,126</b>	<b>32.3</b>	<b>3,648</b>	<b>10,458</b>	<b>34.9</b>

## VOTER TURNOUT BY PARTY 2003 PRIMARY ELECTION

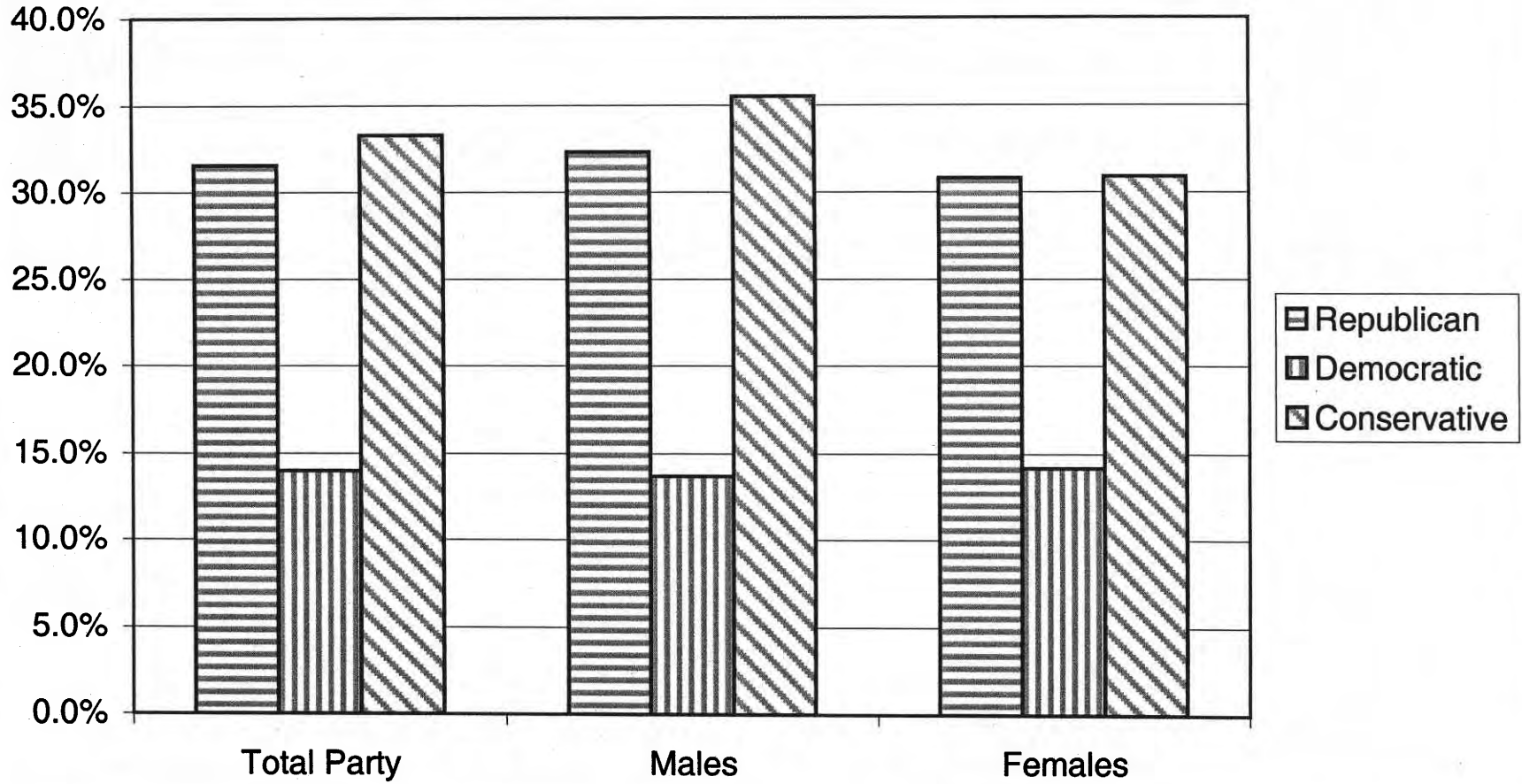


## VOTER TURNOUT - TOTAL AND BY GENDER 2003 PRIMARY ELECTION

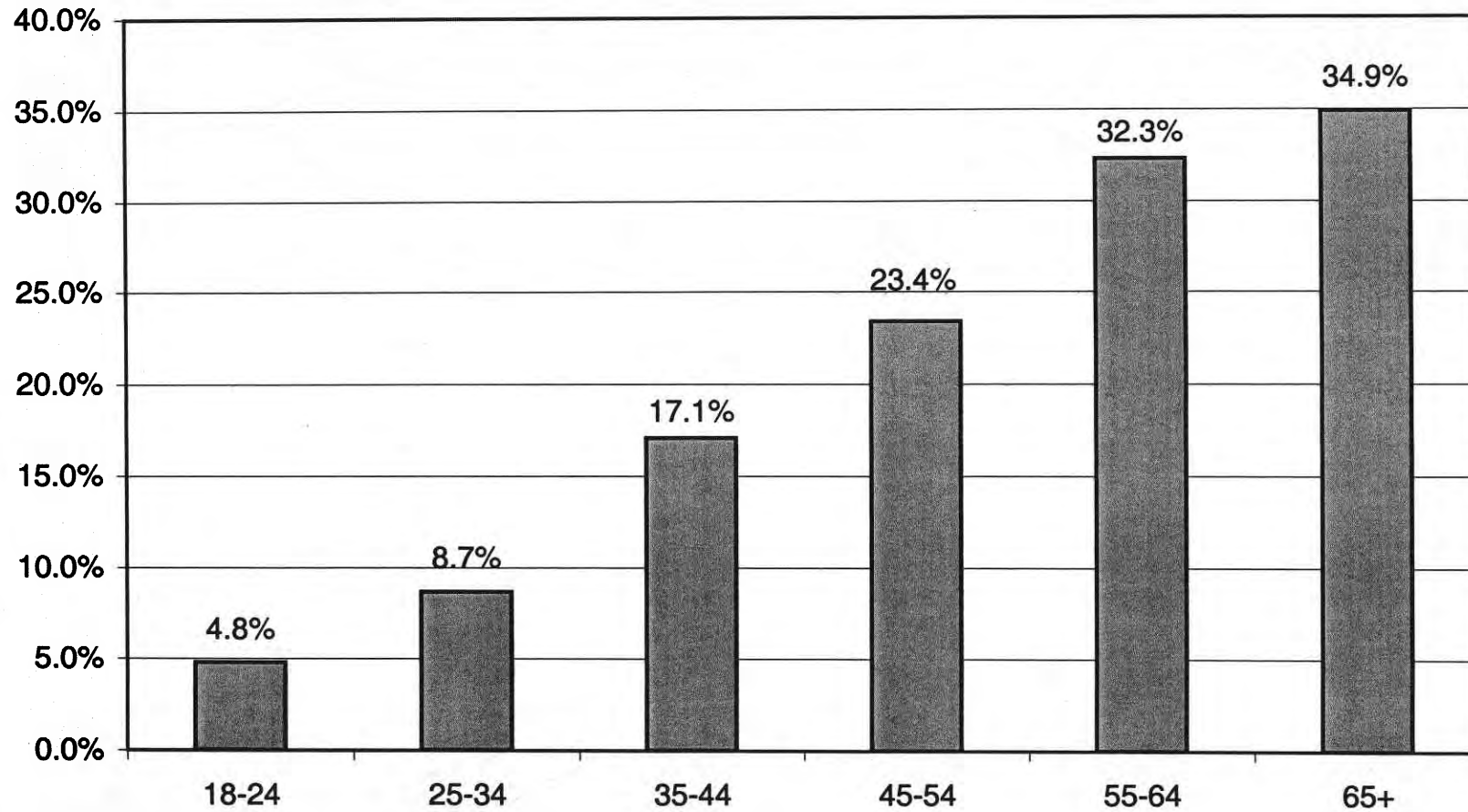




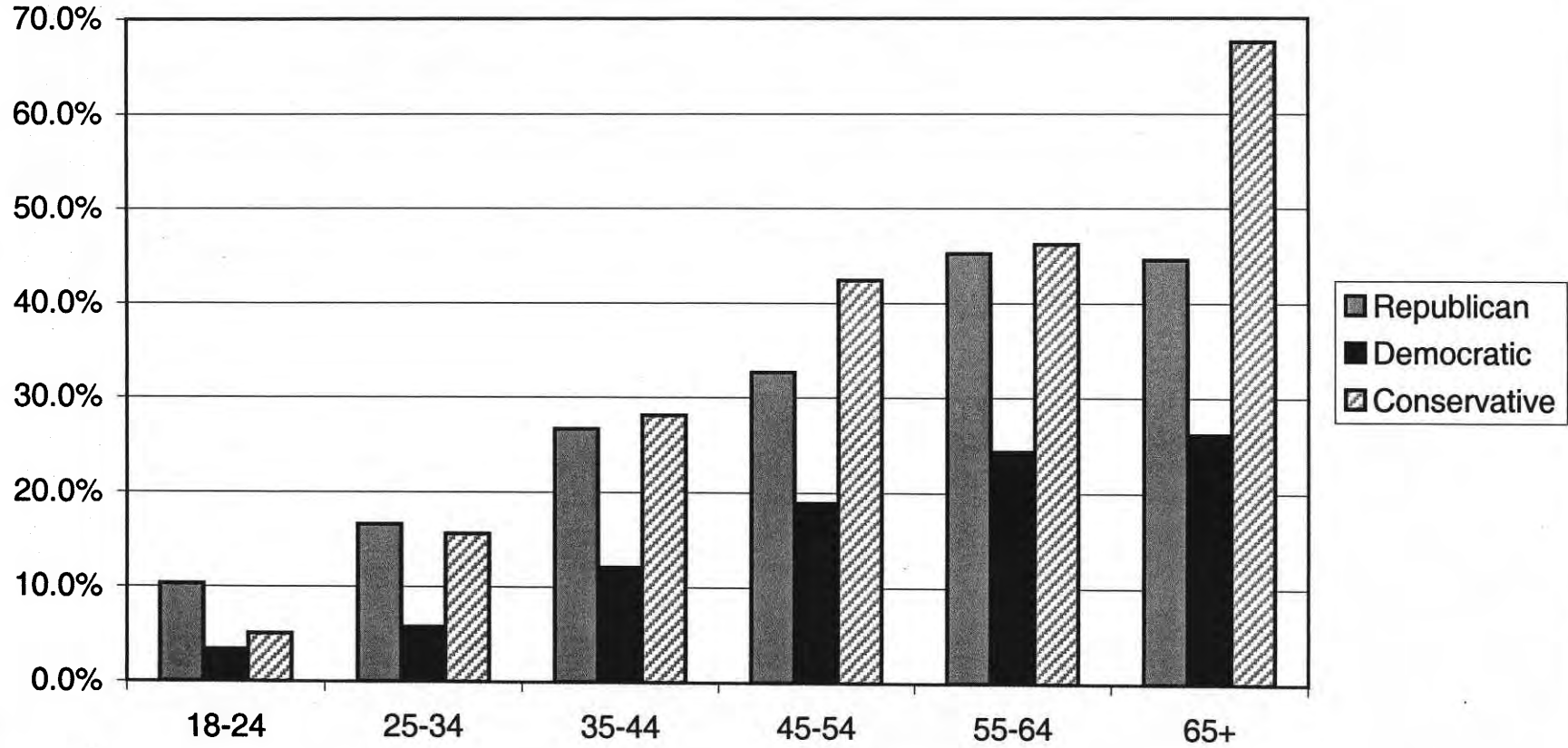
### COMPARISON OF TOTAL AND GENDER TURNOUT 2003 PRIMARY ELECTION



## VOTER TURNOUT BY AGE GROUP 2003 PRIMARY ELECTION



## COMPARISON OF TURNOUT BY AGE GROUP 2003 PRIMARY ELECTION



# **REPUBLICAN SUMMARY**

2003 PRIMARY ELECTION  
REPUBLICAN TURNOUT BY GENDER

LT/LD SUMMARY

LEGISLATIVE DISTRICT OR TOWN	TOTAL VOTERS			MALES			FEMALES		
	VOTED	REGISTERED	TURNOUT	VOTED	REGISTERED	TURNOUT	VOTED	REGISTERED	TURNOUT
Leg. Dist. 06	0	0	0.00 %	0	0	0.00 %	0	0	0.00 %
Leg. Dist. 07	0	0	0.00 %	0	0	0.00 %	0	0	0.00 %
Leg. Dist. 21	0	0	0.00 %	0	0	0.00 %	0	0	0.00 %
Leg. Dist. 22	0	0	0.00 %	0	0	0.00 %	0	0	0.00 %
Leg. Dist. 23	0	0	0.00 %	0	0	0.00 %	0	0	0.00 %
Leg. Dist. 24	0	0	0.00 %	0	0	0.00 %	0	0	0.00 %
Leg. Dist. 25	0	0	0.00 %	0	0	0.00 %	0	0	0.00 %
Leg. Dist. 26	0	0	0.00 %	0	0	0.00 %	0	0	0.00 %
Leg. Dist. 27	0	0	0.00 %	0	0	0.00 %	0	0	0.00 %
Leg. Dist. 28	0	0	0.00 %	0	0	0.00 %	0	0	0.00 %
Leg. Dist. 29	0	0	0.00 %	0	0	0.00 %	0	0	0.00 %
TOTAL:	0	0	0.00 %	0	0	0.00 %	0	0	0.00 %
Chili	2,034	7,182	28.32 %	1,030	3,590	28.69 %	1,004	3,592	27.95 %
Hamlin	807	2,393	33.72 %	425	1,238	34.33 %	382	1,155	33.07 %
Henrietta	2,523	7,129	35.39 %	1,321	3,631	36.38 %	1,202	3,498	34.36 %
Irondequoit	2	549	0.36 %	1	292	0.34 %	1	257	0.39 %
Penfield	3,049	9,402	32.43 %	1,605	4,811	33.36 %	1,444	4,591	31.45 %
TOTAL:	8,415	26,655	31.57 %	4,382	13,562	32.31 %	4,033	13,093	30.80 %
GRAND TOTAL:	8,415	26,655	31.57 %	4,382	13,562	32.31 %	4,033	13,093	30.80 %

2003 PRIMARY ELECTION  
REPUBLICAN TURNOUT BY AGE

LT/LD SUMMARY  
Part 1 of 2

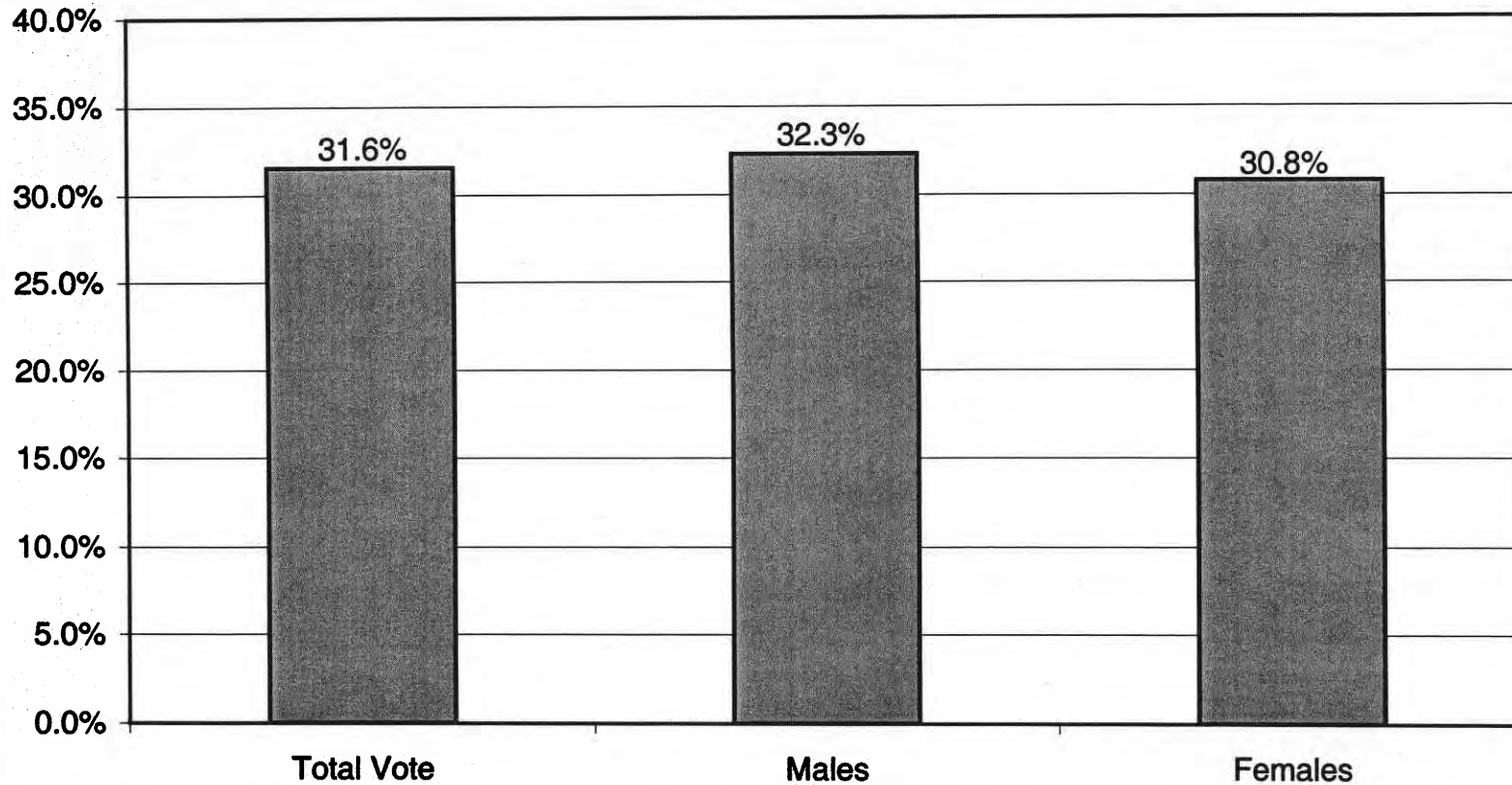
LEGISLATIVE DISTRICT OR TOWN	NDOB			18-24			25-34			35-44		
	VOTED	REGISTERED	TURNOUT	VOTED	REGISTERED	TURNOUT	VOTED	REGISTERED	TURNOUT	VOTED	REGISTERED	TURNOUT
Leg. Dist. 06	0	0	0.00 %	0	0	0.00 %	0	0	0.00 %	0	0	0.00 %
Leg. Dist. 07	0	0	0.00 %	0	0	0.00 %	0	0	0.00 %	0	0	0.00 %
Leg. Dist. 21	0	0	0.00 %	0	0	0.00 %	0	0	0.00 %	0	0	0.00 %
Leg. Dist. 22	0	0	0.00 %	0	0	0.00 %	0	0	0.00 %	0	0	0.00 %
Leg. Dist. 23	0	0	0.00 %	0	0	0.00 %	0	0	0.00 %	0	0	0.00 %
Leg. Dist. 24	0	0	0.00 %	0	0	0.00 %	0	0	0.00 %	0	0	0.00 %
Leg. Dist. 25	0	0	0.00 %	0	0	0.00 %	0	0	0.00 %	0	0	0.00 %
Leg. Dist. 26	0	0	0.00 %	0	0	0.00 %	0	0	0.00 %	0	0	0.00 %
Leg. Dist. 27	0	0	0.00 %	0	0	0.00 %	0	0	0.00 %	0	0	0.00 %
Leg. Dist. 28	0	0	0.00 %	0	0	0.00 %	0	0	0.00 %	0	0	0.00 %
Leg. Dist. 29	0	0	0.00 %	0	0	0.00 %	0	0	0.00 %	0	0	0.00 %
<b>TOTAL:</b>	<b>0</b>	<b>0</b>	<b>0.00 %</b>	<b>0</b>	<b>0</b>	<b>0.00 %</b>	<b>0</b>	<b>0</b>	<b>0.00 %</b>	<b>0</b>	<b>0</b>	<b>0.00 %</b>
Chili	164	392	41.84 %	46	560	8.21 %	152	1,201	12.66 %	365	1,564	23.34 %
Hamlin	15	25	60.00 %	24	199	12.06 %	68	373	18.23 %	175	617	28.36 %
Henrietta	49	89	55.06 %	66	541	12.20 %	241	1,216	19.82 %	493	1,536	32.10 %
Irondequoit	0	48	0.00 %	0	25	0.00 %	0	71	0.00 %	0	104	0.00 %
Penfield	191	363	52.62 %	54	519	10.40 %	243	1,387	17.52 %	595	2,286	26.03 %
<b>TOTAL:</b>	<b>419</b>	<b>917</b>	<b>45.69 %</b>	<b>190</b>	<b>1,844</b>	<b>10.30 %</b>	<b>704</b>	<b>4,248</b>	<b>16.57 %</b>	<b>1,628</b>	<b>6,107</b>	<b>26.66 %</b>
<b>GRAND TOTAL:</b>	<b>419</b>	<b>917</b>	<b>45.69 %</b>	<b>190</b>	<b>1,844</b>	<b>10.30 %</b>	<b>704</b>	<b>4,248</b>	<b>16.57 %</b>	<b>1,628</b>	<b>6,107</b>	<b>26.66 %</b>

2003 PRIMARY ELECTION  
 REPUBLICAN TURNOUT BY AGE

LT/LD SUMMARY  
 Part 2 of 2

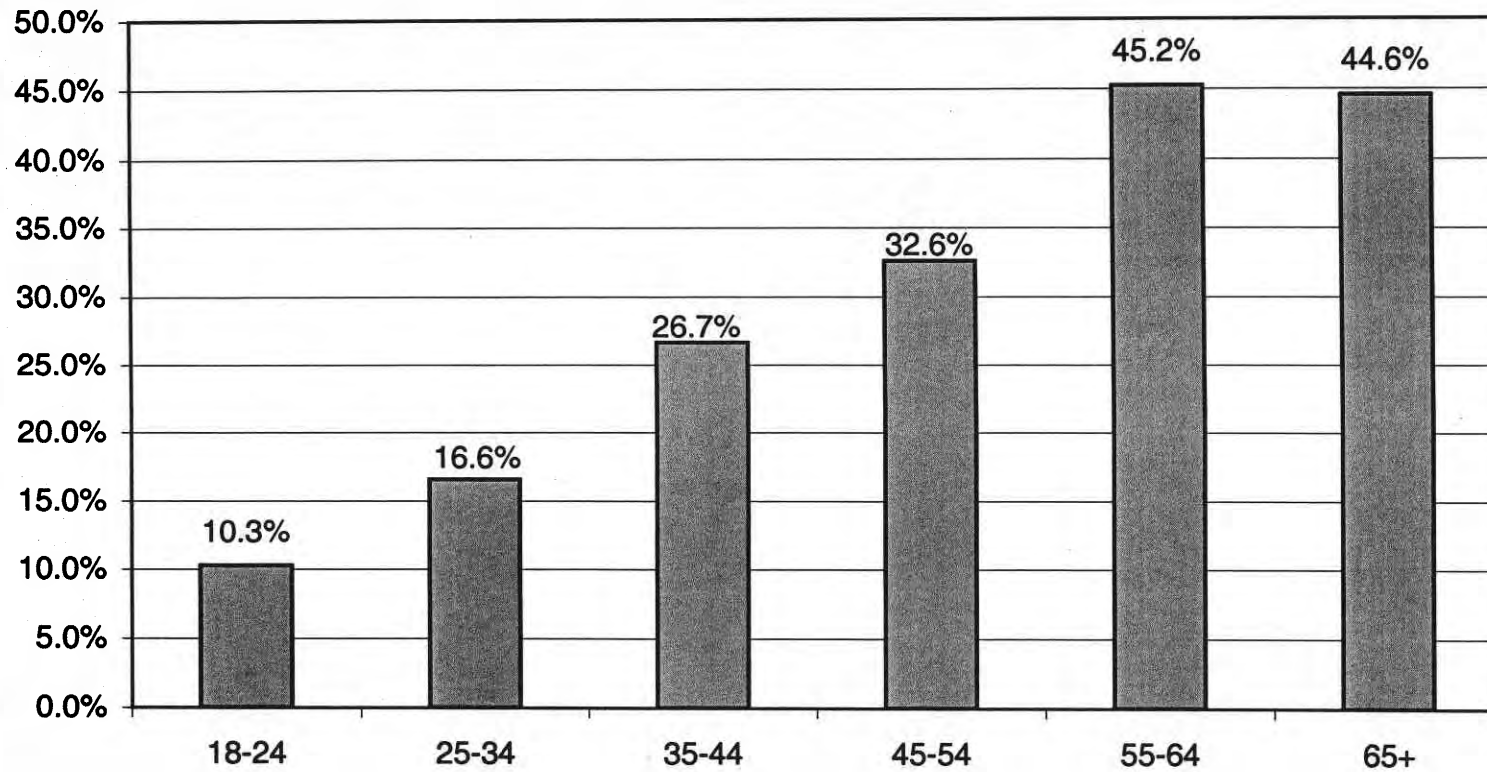
LEGISLATIVE DISTRICT OR TOWN	45-54			55-64			65+		
	VOTED	REGISTERED	TURNOUT	VOTED	REGISTERED	TURNOUT	VOTED	REGISTERED	TURNOUT
Leg. Dist. 06	0	0	0.00 %	0	0	0.00 %	0	0	0.00 %
Leg. Dist. 07	0	0	0.00 %	0	0	0.00 %	0	0	0.00 %
Leg. Dist. 21	0	0	0.00 %	0	0	0.00 %	0	0	0.00 %
Leg. Dist. 22	0	0	0.00 %	0	0	0.00 %	0	0	0.00 %
Leg. Dist. 23	0	0	0.00 %	0	0	0.00 %	0	0	0.00 %
Leg. Dist. 24	0	0	0.00 %	0	0	0.00 %	0	0	0.00 %
Leg. Dist. 25	0	0	0.00 %	0	0	0.00 %	0	0	0.00 %
Leg. Dist. 26	0	0	0.00 %	0	0	0.00 %	0	0	0.00 %
Leg. Dist. 27	0	0	0.00 %	0	0	0.00 %	0	0	0.00 %
Leg. Dist. 28	0	0	0.00 %	0	0	0.00 %	0	0	0.00 %
Leg. Dist. 29	0	0	0.00 %	0	0	0.00 %	0	0	0.00 %
TOTAL:	0	0	0.00 %	0	0	0.00 %	0	0	0.00 %
Chili	368	1,265	29.09 %	399	943	42.31 %	540	1,257	42.96 %
Hamlin	210	541	38.82 %	175	354	49.44 %	140	284	49.30 %
Henrietta	455	1,268	35.88 %	531	1,089	48.76 %	688	1,390	49.50 %
Irondequoit	1	93	1.08 %	1	78	1.28 %	0	130	0.00 %
Penfield	564	1,731	32.58 %	601	1,311	45.84 %	801	1,805	44.38 %
TOTAL:	1,598	4,898	32.63 %	1,707	3,775	45.22 %	2,169	4,866	44.57 %
GRAND TOTAL:	1,598	4,898	32.63 %	1,707	3,775	45.22 %	2,169	4,866	44.57 %

## REPUBLICAN TURNOUT - TOTAL AND GENDER 2003 PRIMARY ELECTION





## REPUBLICAN TURNOUT BY AGE GROUP 2003 PRIMARY ELECTION



# **DEMOCRATIC SUMMARY**

2003 PRIMARY ELECTION  
DEMOCRATIC TURNOUT BY GENDER

LT/LD SUMMARY

LEGISLATIVE DISTRICT OR TOWN	TOTAL VOTERS			MALES			FEMALES		
	VOTED	REGISTERED	TURNOUT	VOTED	REGISTERED	TURNOUT	VOTED	REGISTERED	TURNOUT
<b>CITY</b>									
Leg. Dist. 06	133	1,078	12.3	50	411	12.2	83	667	12.4
Leg. Dist. 07	121	601	20.1	48	217	22.1	73	384	19.0
Leg. Dist. 21	837	6,770	12.4	329	2,594	12.7	508	4,176	12.2
Leg. Dist. 22	738	6,793	10.9	260	2,645	9.8	478	4,148	11.5
Leg. Dist. 23	1,063	5,569	19.1	467	2,354	19.8	596	3,215	18.5
Leg. Dist. 24	667	3,361	19.8	271	1,371	19.8	396	1,990	19.9
Leg. Dist. 25	1,112	6,956	16.0	406	2,846	14.3	706	4,110	17.2
Leg. Dist. 26	321	3,085	10.4	136	1,217	11.2	185	1,868	9.9
Leg. Dist. 27	1,408	8,768	16.1	503	3,419	14.7	905	5,349	16.9
Leg. Dist. 28	457	4,891	9.3	187	1,833	10.2	270	3,058	8.8
Leg. Dist. 29	725	6,372	11.4	254	2,406	10.6	471	3,966	11.9
<b>CITY TOTAL:</b>	<b>7,582</b>	<b>54,244</b>	<b>14.0</b>	<b>2,911</b>	<b>21,313</b>	<b>13.7</b>	<b>4,671</b>	<b>32,931</b>	<b>14.2</b>
<b>TOWNS</b>									
Chili	0	0	0.0	0	0	0.0	0	0	0.0
Hamlin	0	0	0.0	0	0	0.0	0	0	0.0
Henrietta	0	0	0.0	0	0	0.0	0	0	0.0
Irondequoit	0	0	0.0	0	0	0.0	0	0	0.0
Penfield	0	0	0.0	0	0	0.0	0	0	0.0
<b>TOWNS TOTAL:</b>	<b>0</b>	<b>0</b>	<b>0.0</b>	<b>0</b>	<b>0</b>	<b>0.0</b>	<b>0</b>	<b>0</b>	<b>0.0</b>
<b>Grand Total:</b>	<b>7,582</b>	<b>54,244</b>	<b>14.0</b>	<b>2,911</b>	<b>21,313</b>	<b>13.7</b>	<b>4,671</b>	<b>32,931</b>	<b>14.2</b>

2003 PRIMARY ELECTION  
VOTER TURNOUT BY AGE

DEMOCRATIC LT/LD SUMMARY  
Part 1 of 2

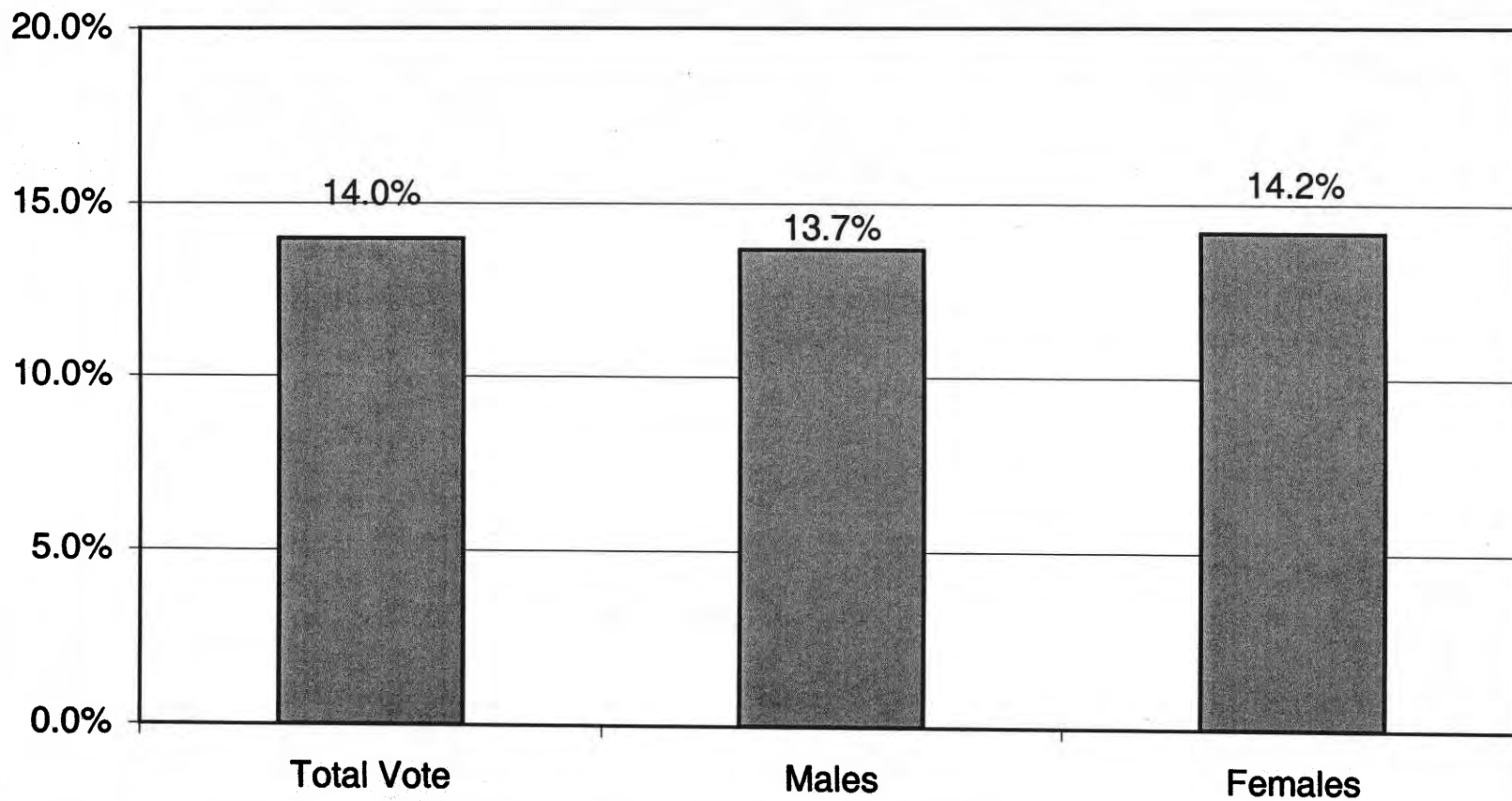
LEGISLATIVE DISTRICT OR TOWN	NDOB			18-24			25-34			35-44		
	VOTED	REGISTERED	TURNOUT	VOTED	REGISTERED	TURNOUT	VOTED	REGISTERED	TURNOUT	VOTED	REGISTERED	TURNOUT
<b>CITY</b>												
Leg. Dist. 06	5	32	15.6	4	105	3.8	6	202	3.0	25	241	10.4
Leg. Dist. 07	3	15	20.0	2	42	4.8	1	89	1.1	9	104	8.7
Leg. Dist. 21	40	180	22.2	21	839	2.5	87	1,553	5.6	169	1,556	10.9
Leg. Dist. 22	17	84	20.2	33	961	3.4	62	1,447	4.3	166	1,613	10.3
Leg. Dist. 23	40	123	32.5	34	850	4.0	96	1,350	7.1	195	1,061	18.4
Leg. Dist. 24	20	78	25.6	14	367	3.8	57	677	8.4	142	699	20.3
Leg. Dist. 25	30	95	31.6	29	926	3.1	106	1,437	7.4	194	1,529	12.7
Leg. Dist. 26	10	55	18.2	15	417	3.6	31	736	4.2	56	659	8.5
Leg. Dist. 27	34	121	28.1	51	1,030	5.0	144	1,857	7.8	293	2,154	13.6
Leg. Dist. 28	14	102	13.7	17	708	2.4	37	1,033	3.6	87	1,123	7.7
Leg. Dist. 29	23	177	13.0	22	879	2.5	50	1,248	4.0	131	1,385	9.5
<b>CITY TOTAL:</b>	<b>236</b>	<b>1,062</b>	<b>22.2</b>	<b>242</b>	<b>7,124</b>	<b>3.4</b>	<b>677</b>	<b>11,629</b>	<b>5.8</b>	<b>1,467</b>	<b>12,124</b>	<b>12.1</b>
<b>TOWNS</b>												
Chili	0	0	0.0	0	0	0.0	0	0	0.0	0	0	0.0
Hamlin	0	0	0.0	0	0	0.0	0	0	0.0	0	0	0.0
Henrietta	0	0	0.0	0	0	0.0	0	0	0.0	0	0	0.0
Irondequoit	0	0	0.0	0	0	0.0	0	0	0.0	0	0	0.0
Penfield	0	0	0.0	0	0	0.0	0	0	0.0	0	0	0.0
<b>TOWNS TOTAL:</b>	<b>0</b>	<b>0</b>	<b>0.0</b>	<b>0</b>	<b>0</b>	<b>0.0</b>	<b>0</b>	<b>0</b>	<b>0.0</b>	<b>0</b>	<b>0</b>	<b>0.0</b>
<b>Grand Total:</b>	<b>236</b>	<b>1,062</b>	<b>22.2</b>	<b>242</b>	<b>7,124</b>	<b>3.4</b>	<b>677</b>	<b>11,629</b>	<b>5.8</b>	<b>1,467</b>	<b>12,124</b>	<b>12.1</b>

2003 PRIMARY ELECTION  
VOTER TURNOUT BY AGE

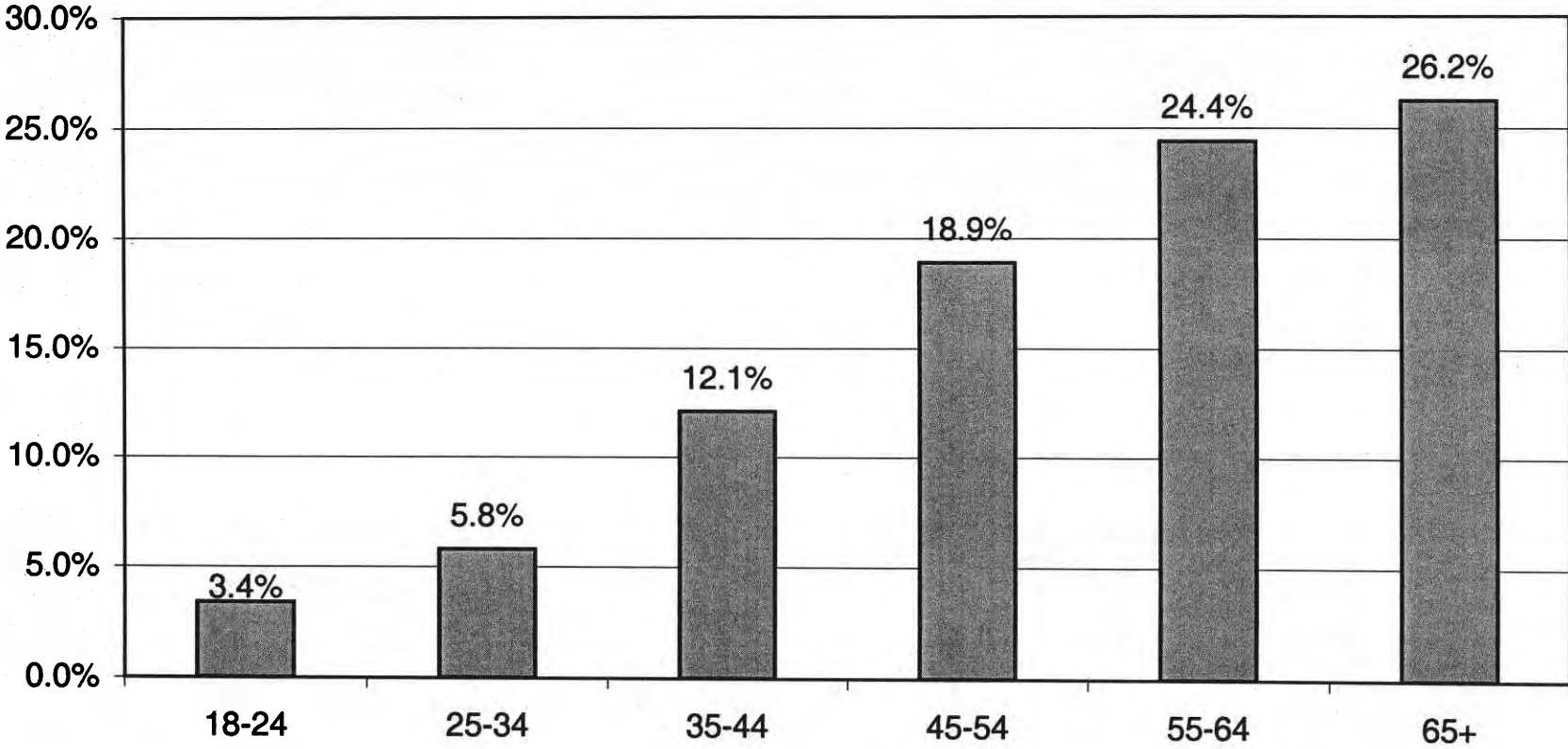
DEMOCRATIC LT/LD SUMMARY  
Part 2 of 2

LEGISLATIVE DISTRICT OR TOWN <b>CITY</b>	45-54			55-64			65+		
	VOTED	REGISTERED	TURNOUT	VOTED	REGISTERED	TURNOUT	VOTED	REGISTERED	TURNOUT
Leg. Dist. 06	40	199	20.1	25	116	21.6	28	183	15.3
Leg. Dist. 07	34	138	24.6	25	83	30.1	47	130	36.2
Leg. Dist. 21	216	1,337	16.2	154	681	22.6	150	624	24.0
Leg. Dist. 22	193	1,307	14.8	146	795	18.4	121	586	20.6
Leg. Dist. 23	304	1,101	27.6	238	652	36.5	156	432	36.1
Leg. Dist. 24	210	759	27.7	115	365	31.5	109	416	26.2
Leg. Dist. 25	239	1,221	19.6	231	875	26.4	283	873	32.4
Leg. Dist. 26	84	622	13.5	58	306	19.0	67	290	23.1
Leg. Dist. 27	392	1,758	22.3	301	1,127	26.7	193	721	26.8
Leg. Dist. 28	101	886	11.4	96	532	18.0	105	507	20.7
Leg. Dist. 29	167	1,152	14.5	140	741	18.9	192	790	24.3
<b>CITY TOTAL:</b>	<u>1,980</u>	<u>10,480</u>	<u>18.9</u>	<u>1,529</u>	<u>6,273</u>	<u>24.4</u>	<u>1,451</u>	<u>5,552</u>	<u>26.1</u>
<b>TOWNS</b>									
Chili	0	0	0.0	0	0	0.0	0	0	0.0
Hamlin	0	0	0.0	0	0	0.0	0	0	0.0
Henrietta	0	0	0.0	0	0	0.0	0	0	0.0
Irondequoit	0	0	0.0	0	0	0.0	0	0	0.0
Penfield	0	0	0.0	0	0	0.0	0	0	0.0
<b>TOWNS TOTAL:</b>	<u>0</u>	<u>0</u>	<u>0.0</u>	<u>0</u>	<u>0</u>	<u>0.0</u>	<u>0</u>	<u>0</u>	<u>0.0</u>
<b>Grand Total:</b>	<u>1,980</u>	<u>10,480</u>	<u>18.9</u>	<u>1,529</u>	<u>6,273</u>	<u>24.4</u>	<u>1,451</u>	<u>5,552</u>	<u>26.1</u>

**DEMOCRATIC TURNOUT - TOTAL AND GENDER**  
**2003 PRIMARY ELECTION**



**DEMOCRATIC TURNOUT BY AGE GROUP  
2003 PRIMARY ELECTION**



# **CONSERVATIVE SUMMARY**



2003 PRIMARY ELECTION  
CONSERVATIVE TURNOUT BY GENDER

LT/LD SUMMARY

LEGISLATIVE DISTRICT OR TOWN	TOTAL VOTERS			MALES			FEMALES		
	VOTED	REGISTERED	TURNOUT	VOTED	REGISTERED	TURNOUT	VOTED	REGISTERED	TURNOUT
<b>CITY</b>									
Leg. Dist. 06	0	0	0.0	0	0	0.0	0	0	0.0
Leg. Dist. 07	0	0	0.0	0	0	0.0	0	0	0.0
Leg. Dist. 21	0	0	0.0	0	0	0.0	0	0	0.0
Leg. Dist. 22	0	0	0.0	0	0	0.0	0	0	0.0
Leg. Dist. 23	0	0	0.0	0	0	0.0	0	0	0.0
Leg. Dist. 24	0	0	0.0	0	0	0.0	0	0	0.0
Leg. Dist. 25	0	0	0.0	0	0	0.0	0	0	0.0
Leg. Dist. 26	0	0	0.0	0	0	0.0	0	0	0.0
Leg. Dist. 27	0	0	0.0	0	0	0.0	0	0	0.0
Leg. Dist. 28	0	0	0.0	0	0	0.0	0	0	0.0
Leg. Dist. 29	0	0	0.0	0	0	0.0	0	0	0.0
<b>CITY TOTAL:</b>	<b>0</b>	<b>0</b>	<b>0.0</b>	<b>0</b>	<b>0</b>	<b>0.0</b>	<b>0</b>	<b>0</b>	<b>0.0</b>
<b>TOWNS</b>									
Chili	156	464	33.6	97	273	35.5	59	191	30.9
Hamlin	0	0	0.0	0	0	0.0	0	0	0.0
Henrietta	0	0	0.0	0	0	0.0	0	0	0.0
Irondequoit	0	0	0.0	0	0	0.0	0	0	0.0
Penfield	0	0	0.0	0	0	0.0	0	0	0.0
<b>TOWNS TOTAL:</b>	<b>156</b>	<b>464</b>	<b>33.6</b>	<b>97</b>	<b>273</b>	<b>35.5</b>	<b>59</b>	<b>191</b>	<b>30.9</b>
<b>Grand Total:</b>	<b>156</b>	<b>464</b>	<b>33.6</b>	<b>97</b>	<b>273</b>	<b>35.5</b>	<b>59</b>	<b>191</b>	<b>30.9</b>

2003 PRIMARY ELECTION  
VOTER TURNOUT BY AGE

CONSERVATIVE LT/LD SUMMARY

Part 1 of 2

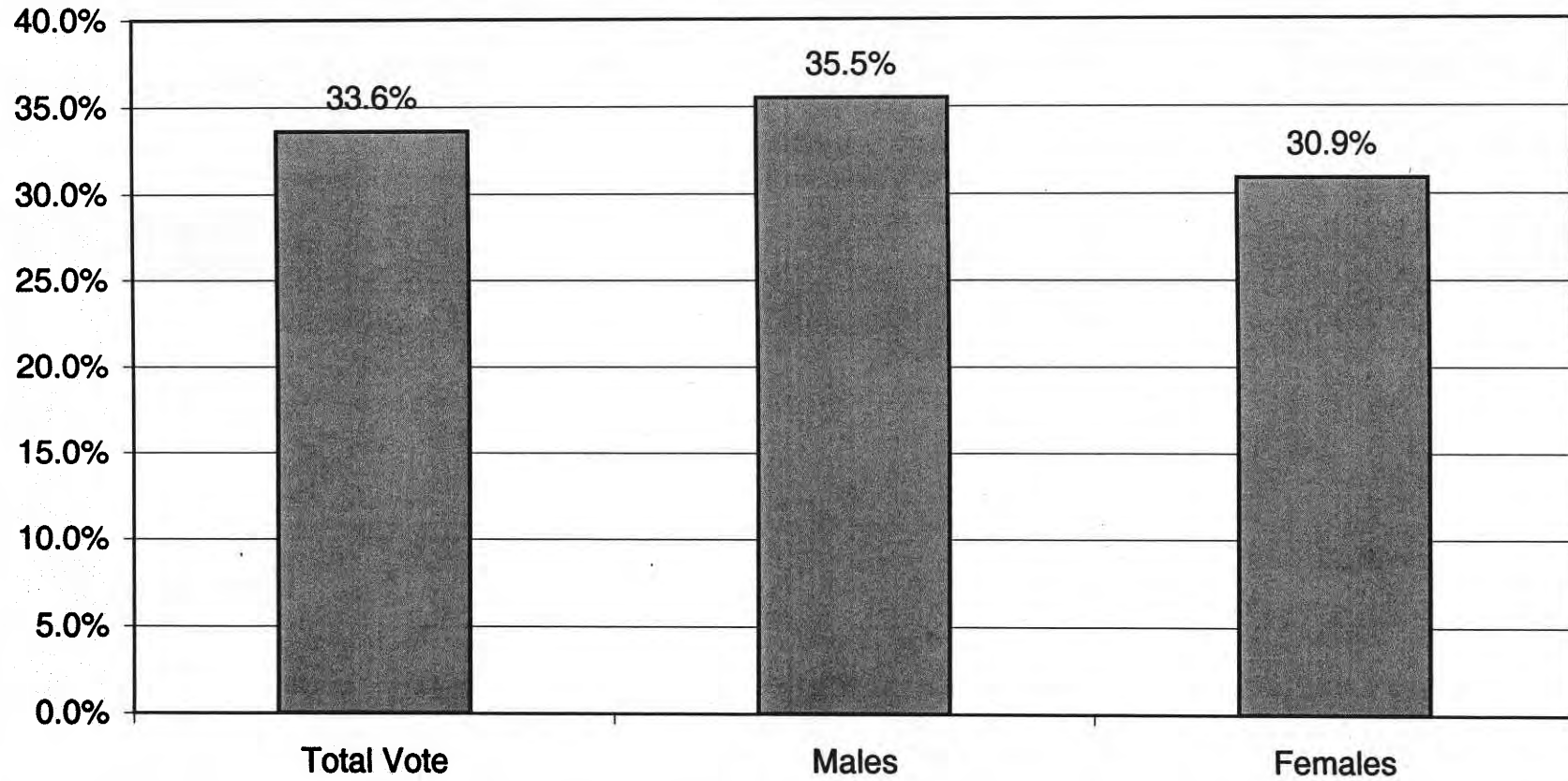
LEGISLATIVE DISTRICT OR TOWN	NDOB			18-24			25-34			35-44		
	VOTED	REGISTERED	TURNOUT	VOTED	REGISTERED	TURNOUT	VOTED	REGISTERED	TURNOUT	VOTED	REGISTERED	TURNOUT
<b>CITY</b>												
Leg. Dist. 06	0	0	0.0	0	0	0.0	0	0	0.0	0	0	0.0
Leg. Dist. 07	0	0	0.0	0	0	0.0	0	0	0.0	0	0	0.0
Leg. Dist. 21	0	0	0.0	0	0	0.0	0	0	0.0	0	0	0.0
Leg. Dist. 22	0	0	0.0	0	0	0.0	0	0	0.0	0	0	0.0
Leg. Dist. 23	0	0	0.0	0	0	0.0	0	0	0.0	0	0	0.0
Leg. Dist. 24	0	0	0.0	0	0	0.0	0	0	0.0	0	0	0.0
Leg. Dist. 25	0	0	0.0	0	0	0.0	0	0	0.0	0	0	0.0
Leg. Dist. 26	0	0	0.0	0	0	0.0	0	0	0.0	0	0	0.0
Leg. Dist. 27	0	0	0.0	0	0	0.0	0	0	0.0	0	0	0.0
Leg. Dist. 28	0	0	0.0	0	0	0.0	0	0	0.0	0	0	0.0
Leg. Dist. 29	0	0	0.0	0	0	0.0	0	0	0.0	0	0	0.0
<b>CITY TOTAL:</b>	<u>0</u>	<u>0</u>	<u>0.0</u>	<u>0</u>	<u>0</u>	<u>0.0</u>	<u>0</u>	<u>0</u>	<u>0.0</u>	<u>0</u>	<u>0</u>	<u>0.0</u>
<b>TOWNS</b>												
Chili	1	3	33.3	2	39	5.1	12	77	15.6	36	128	28.1
Hamlin	0	0	0.0	0	0	0.0	0	0	0.0	0	0	0.0
Henrietta	0	0	0.0	0	0	0.0	0	0	0.0	0	0	0.0
Irondequoit	0	0	0.0	0	0	0.0	0	0	0.0	0	0	0.0
Penfield	0	0	0.0	0	0	0.0	0	0	0.0	0	0	0.0
<b>TOWNS TOTAL:</b>	<u>1</u>	<u>3</u>	<u>33.3</u>	<u>2</u>	<u>39</u>	<u>5.1</u>	<u>12</u>	<u>77</u>	<u>15.6</u>	<u>36</u>	<u>128</u>	<u>28.1</u>
<b>Grand Total:</b>	<u>1</u>	<u>3</u>	<u>33.3</u>	<u>2</u>	<u>39</u>	<u>5.1</u>	<u>12</u>	<u>77</u>	<u>15.6</u>	<u>36</u>	<u>128</u>	<u>28.1</u>

2003 PRIMARY ELECTION  
VOTER TURNOUT BY AGE

CONSERVATIVE LT/LD SUMMARY  
Part 2 of 2

LEGISLATIVE DISTRICT OR TOWN	45-54			55-64			65+		
	VOTED	REGISTERED	TURNOUT	VOTED	REGISTERED	TURNOUT	VOTED	REGISTERED	TURNOUT
<b>CITY</b>									
Leg. Dist. 06	0	0	0.0	0	0	0.0	0	0	0.0
Leg. Dist. 07	0	0	0.0	0	0	0.0	0	0	0.0
Leg. Dist. 21	0	0	0.0	0	0	0.0	0	0	0.0
Leg. Dist. 22	0	0	0.0	0	0	0.0	0	0	0.0
Leg. Dist. 23	0	0	0.0	0	0	0.0	0	0	0.0
Leg. Dist. 24	0	0	0.0	0	0	0.0	0	0	0.0
Leg. Dist. 25	0	0	0.0	0	0	0.0	0	0	0.0
Leg. Dist. 26	0	0	0.0	0	0	0.0	0	0	0.0
Leg. Dist. 27	0	0	0.0	0	0	0.0	0	0	0.0
Leg. Dist. 28	0	0	0.0	0	0	0.0	0	0	0.0
Leg. Dist. 29	0	0	0.0	0	0	0.0	0	0	0.0
<b>CITY TOTAL:</b>	<u>0</u>	<u>0</u>	<u>0.0</u>	<u>0</u>	<u>0</u>	<u>0.0</u>	<u>0</u>	<u>0</u>	<u>0.0</u>
<b>TOWNS</b>									
Chili	42	99	42.4	36	78	46.2	27	40	67.5
Hamlin	0	0	0.0	0	0	0.0	0	0	0.0
Henrietta	0	0	0.0	0	0	0.0	0	0	0.0
Irondequoit	0	0	0.0	0	0	0.0	0	0	0.0
Penfield	0	0	0.0	0	0	0.0	0	0	0.0
<b>TOWNS TOTAL:</b>	<u>42</u>	<u>99</u>	<u>42.4</u>	<u>36</u>	<u>78</u>	<u>46.2</u>	<u>27</u>	<u>40</u>	<u>67.5</u>
<b>Grand Total:</b>	<u>42</u>	<u>99</u>	<u>42.4</u>	<u>36</u>	<u>78</u>	<u>46.2</u>	<u>27</u>	<u>40</u>	<u>67.5</u>

## CONSERVATIVE TURNOUT - TOTAL AND GENDER 2003 PRIMARY ELECTION



## CONSERVATIVE TURNOUT BY AGE GROUP 2003 PRIMARY ELECTION

