



VOTER TURNOUT SUMMARY REPORT 2006 GENERAL ELECTION

Monroe County Board of Elections
39 West Main Street, Rochester, New York 14614

January 17, 2007

Peter M. Quinn
Commissioner of Elections

Thomas F. Ferrarese
Commissioner of Elections

CONTENTS DESCRIPTION

General Summary	Page 1
Republican Summary	Page 12
Democratic Summary	Page 18
Independence Summary	Page 24
Conservative Summary	Page 30
Working Families Summary	Page 36
Blanks Summary	Page 42
Historical Data.....	Page 48

GENERAL SUMMARY

2006 GENERAL ELECTION
VOTER TURNOUT BY GENDER

LT/LD SUMMARY

LEGISLATIVE DISTRICT OR TOWN	TOTAL VOTERS			MALES			FEMALES		
	VOTED	REGISTERED	TURNOUT	VOTED	REGISTERED	TURNOUT	VOTED	REGISTERED	TURNOUT
CITY									
Leg. Dist. 06	1,667	2,971	56.11 %	750	1,297	57.83 %	917	1,674	54.78 %
Leg. Dist. 07	815	1,448	56.28 %	367	649	56.55 %	448	799	56.07 %
Leg. Dist. 21	5,855	12,361	47.37 %	2,589	5,346	48.43 %	3,266	7,015	46.56 %
Leg. Dist. 22	2,662	8,845	30.10 %	1,024	3,589	28.53 %	1,638	5,256	31.16 %
Leg. Dist. 23	6,888	11,680	58.97 %	3,455	5,647	61.18 %	3,433	6,033	56.90 %
Leg. Dist. 24	4,157	6,800	61.13 %	1,932	3,161	61.12 %	2,225	3,639	61.14 %
Leg. Dist. 25	4,034	9,346	43.16 %	1,775	4,132	42.96 %	2,259	5,214	43.33 %
Leg. Dist. 26	2,956	6,651	44.44 %	1,319	2,883	45.75 %	1,637	3,768	43.44 %
Leg. Dist. 27	5,674	12,509	45.36 %	2,283	5,128	44.52 %	3,391	7,381	45.94 %
Leg. Dist. 28	3,364	8,940	37.63 %	1,493	3,760	39.71 %	1,871	5,180	36.12 %
Leg. Dist. 29	4,094	10,379	39.45 %	1,707	4,288	39.81 %	2,387	6,091	39.19 %
TOTAL:	42,166	91,930	45.87 %	18,694	39,880	46.88 %	23,472	52,050	45.10 %
TOWNS									
Brighton	14,430	21,597	66.81 %	6,485	9,605	67.52 %	7,945	11,992	66.25 %
Chili	10,423	18,093	57.61 %	4,999	8,452	59.15 %	5,424	9,641	56.26 %
Clarkson	2,058	3,664	56.17 %	1,045	1,779	58.74 %	1,013	1,885	53.74 %
East Rochester	1,948	3,680	52.93 %	887	1,646	53.89 %	1,061	2,034	52.16 %
Gates	9,301	17,593	52.87 %	4,354	8,003	54.40 %	4,947	9,590	51.58 %
Greece	32,753	59,854	54.72 %	15,565	27,432	56.74 %	17,188	32,422	53.01 %
Hamlin	2,737	5,187	52.77 %	1,381	2,506	55.11 %	1,356	2,681	50.58 %
Henrietta	11,379	20,048	56.76 %	5,487	9,438	58.14 %	5,892	10,610	55.53 %
Irondequoit	19,927	34,011	58.59 %	9,203	15,080	61.03 %	10,724	18,931	56.65 %
Mendon	3,812	6,093	62.56 %	1,870	2,895	64.59 %	1,942	3,198	60.73 %
Ogden	6,914	12,023	57.51 %	3,414	5,690	60.00 %	3,500	6,333	55.27 %
Parma	5,335	9,750	54.72 %	2,622	4,684	55.98 %	2,713	5,066	53.55 %
Penfield	14,464	23,675	61.09 %	6,939	10,972	63.24 %	7,525	12,703	59.24 %
Perinton	20,237	31,947	63.35 %	9,679	14,845	65.20 %	10,558	17,102	61.74 %
Pittsford	12,492	18,759	66.59 %	5,969	8,737	68.32 %	6,523	10,022	65.09 %
Riga	2,229	3,686	60.47 %	1,087	1,759	61.80 %	1,142	1,927	59.26 %
Rush	1,600	2,466	64.88 %	780	1,178	66.21 %	820	1,288	63.66 %
Sweden	3,601	6,329	56.90 %	1,728	2,968	58.22 %	1,873	3,361	55.73 %
Webster	16,046	26,885	59.68 %	7,766	12,441	62.42 %	8,280	14,444	57.32 %
Wheatland	1,886	3,206	58.83 %	905	1,505	60.13 %	981	1,701	57.67 %
TOTAL:	193,572	328,546	58.92 %	92,165	151,615	60.79 %	101,407	176,931	57.31 %
GRAND TOTAL:	235,738	420,476	56.06 %	110,859	191,495	57.89 %	124,879	228,981	54.54 %

2006 GENERAL ELECTION
VOTER TURNOUT BY PARTY

LT/LD SUMMARY

Part 1 of 2

LEGISLATIVE DISTRICT OR TOWN	REPUBLICAN			DEMOCRAT			INDEPENDENCE		
	VOTED	REGISTERED	TURNOUT	VOTED	REGISTERED	TURNOUT	VOTED	REGISTERED	TURNOUT
CITY									
Leg. Dist. 06	562	923	60.89 %	673	1,106	60.85 %	51	111	45.95 %
Leg. Dist. 07	282	459	61.44 %	334	571	58.49 %	22	55	40.00 %
Leg. Dist. 21	1,062	1,918	55.37 %	3,554	7,314	48.59 %	158	426	37.09 %
Leg. Dist. 22	195	614	31.76 %	2,254	6,597	34.17 %	25	144	17.36 %
Leg. Dist. 23	1,370	2,405	56.96 %	3,768	5,727	65.79 %	215	503	42.74 %
Leg. Dist. 24	743	1,294	57.42 %	2,392	3,502	68.30 %	122	246	49.59 %
Leg. Dist. 25	414	922	44.90 %	3,027	6,575	46.04 %	75	202	37.13 %
Leg. Dist. 26	789	1,506	52.39 %	1,515	3,247	46.66 %	82	230	35.65 %
Leg. Dist. 27	645	1,250	51.60 %	4,281	8,910	48.05 %	90	298	30.20 %
Leg. Dist. 28	654	1,533	42.66 %	2,067	5,025	41.13 %	84	265	31.70 %
Leg. Dist. 29	757	1,580	47.91 %	2,729	6,459	42.25 %	73	253	28.85 %
TOTAL:	7,473	14,404	51.88 %	26,594	55,033	48.32 %	997	2,733	36.48 %
TOWNS									
Brighton	4,365	6,497	67.18 %	6,621	9,029	73.33 %	319	639	49.92 %
Chili	4,670	7,276	64.18 %	3,172	5,316	59.67 %	232	546	42.49 %
Clarkson	1,034	1,625	63.63 %	542	943	57.48 %	60	154	38.96 %
East Rochester	752	1,341	56.08 %	643	1,103	58.30 %	64	149	42.95 %
Gates	3,843	6,413	59.93 %	3,327	5,943	55.98 %	195	512	38.09 %
Greece	14,679	24,073	60.98 %	9,644	16,938	56.94 %	782	1,932	40.48 %
Hamlin	1,492	2,412	61.86 %	626	1,186	52.78 %	71	194	36.60 %
Henrietta	4,498	7,362	61.10 %	4,079	6,624	61.58 %	270	645	41.86 %
Irondequoit	7,312	11,773	62.11 %	7,367	11,856	62.14 %	512	1,137	45.03 %
Mendon	1,788	2,802	63.81 %	1,017	1,556	65.36 %	98	191	51.31 %
Ogden	3,352	5,217	64.25 %	1,774	2,928	60.59 %	154	377	40.85 %
Parma	2,539	4,164	60.98 %	1,264	2,229	56.71 %	145	318	45.60 %
Penfield	6,198	9,510	65.17 %	4,379	6,631	66.04 %	363	822	44.16 %
Perinton	9,012	13,482	66.84 %	5,979	8,879	67.34 %	501	1,014	49.41 %
Pittsford	5,603	8,136	68.87 %	3,825	5,291	72.29 %	282	522	54.02 %
Riga	1,172	1,764	66.44 %	488	812	60.10 %	56	150	37.33 %
Rush	737	1,078	68.37 %	454	642	70.72 %	27	60	45.00 %
Sweden	1,588	2,598	61.12 %	1,112	1,815	61.27 %	107	233	45.92 %
Webster	6,631	10,391	63.81 %	5,005	7,689	65.09 %	423	967	43.74 %
Wheatland	832	1,313	63.37 %	585	923	63.38 %	45	115	39.13 %
TOTAL:	82,097	129,227	63.53 %	61,903	98,333	62.95 %	4,706	10,677	44.08 %
GRAND TOTAL:	89,570	143,631	62.36 %	88,497	153,366	57.70 %	5,703	13,410	42.53 %

2006 GENERAL ELECTION
VOTER TURNOUT BY PARTY

LT/LD SUMMARY

Part 2 of 2

LEGISLATIVE DISTRICT OR TOWN	CONSERVATIVE			WORKING FAMILIES			BLANK		
	VOTED	REGISTERED	TURNOUT	VOTED	REGISTERED	TURNOUT	VOTED	REGISTERED	TURNOUT
CITY									
Leg. Dist. 06	51	86	59.30 %	1	8	12.50 %	329	737	44.64 %
Leg. Dist. 07	22	24	91.67 %	1	3	33.33 %	154	336	45.83 %
Leg. Dist. 21	57	104	54.81 %	8	48	16.67 %	1,016	2,551	39.83 %
Leg. Dist. 22	14	45	31.11 %	4	62	6.45 %	170	1,383	12.29 %
Leg. Dist. 23	61	100	61.00 %	11	32	34.38 %	1,463	2,913	50.22 %
Leg. Dist. 24	35	63	55.56 %	19	27	70.37 %	846	1,668	50.72 %
Leg. Dist. 25	22	51	43.14 %	8	45	17.78 %	488	1,551	31.46 %
Leg. Dist. 26	61	124	49.19 %	12	27	44.44 %	497	1,517	32.76 %
Leg. Dist. 27	35	75	46.67 %	10	64	15.63 %	613	1,912	32.06 %
Leg. Dist. 28	68	137	49.64 %	9	63	14.29 %	482	1,917	25.14 %
Leg. Dist. 29	50	112	44.64 %	3	51	5.88 %	482	1,924	25.05 %
TOTAL:	476	921	51.68 %	86	430	20.00 %	6,540	18,409	35.53 %
TOWNS									
Brighton	132	208	63.46 %	13	27	48.15 %	2,980	5,197	57.34 %
Chili	290	449	64.59 %	12	28	42.86 %	2,047	4,478	45.71 %
Clarkson	60	108	55.56 %	3	12	25.00 %	359	822	43.67 %
East Rochester	47	87	54.02 %	3	16	18.75 %	439	984	44.61 %
Gates	240	400	60.00 %	17	48	35.42 %	1,679	4,277	39.26 %
Greece	902	1,542	58.50 %	39	142	27.46 %	6,707	15,227	44.05 %
Hamlin	72	129	55.81 %	1	11	9.09 %	475	1,255	37.85 %
Henrietta	245	466	52.58 %	12	27	44.44 %	2,275	4,924	46.20 %
Irondequoit	408	690	59.13 %	14	49	28.57 %	4,314	8,506	50.72 %
Mendon	66	97	68.04 %	2	5	40.00 %	841	1,442	58.32 %
Ogden	218	353	61.76 %	8	23	34.78 %	1,408	3,125	45.06 %
Parma	155	252	61.51 %	14	32	43.75 %	1,218	2,755	44.21 %
Penfield	262	411	63.75 %	5	31	16.13 %	3,257	6,270	51.95 %
Perinton	285	461	61.82 %	6	23	26.09 %	4,454	8,088	55.07 %
Pittsford	135	190	71.05 %	6	13	46.15 %	2,641	4,607	57.33 %
Riga	57	79	72.15 %	4	9	44.44 %	452	872	51.83 %
Rush	34	49	69.39 %	2	5	40.00 %	346	632	54.75 %
Sweden	76	130	58.46 %	5	15	33.33 %	713	1,538	46.36 %
Webster	322	540	59.63 %	17	34	50.00 %	3,648	7,264	50.22 %
Wheatland	47	78	60.26 %	1	7	14.29 %	376	770	48.83 %
TOTAL:	4,053	6,719	60.32 %	184	557	33.03 %	40,629	83,033	48.93 %
GRAND TOTAL:	4,529	7,640	59.28 %	270	987	27.36 %	47,169	101,442	46.50 %

2006 GENERAL ELECTION
VOTER TURNOUT BY AGE

LT/LD SUMMARY
Part 1 of 2

LEGISLATIVE DISTRICT OR TOWN	NDOB			18-24			25-34			35-44		
	VOTED	REGISTERED	TURNOUT	VOTED	REGISTERED	TURNOUT	VOTED	REGISTERED	TURNOUT	VOTED	REGISTERED	TURNOUT
Leg. Dist. 06	53	72	73.61 %	28	138	20.29 %	142	512	27.73 %	264	535	49.35 %
Leg. Dist. 07	24	38	63.16 %	26	80	32.50 %	42	172	24.42 %	83	202	41.09 %
Leg. Dist. 21	213	314	67.83 %	158	853	18.52 %	840	2,672	31.44 %	1,058	2,603	40.65 %
Leg. Dist. 22	47	91	51.65 %	89	880	10.11 %	268	1,810	14.81 %	400	1,767	22.64 %
Leg. Dist. 23	170	243	69.96 %	194	685	28.32 %	1,319	3,219	40.98 %	1,285	2,274	56.51 %
Leg. Dist. 24	102	142	71.83 %	115	354	32.49 %	719	1,529	47.02 %	746	1,253	59.54 %
Leg. Dist. 25	80	127	62.99 %	158	990	15.96 %	472	1,721	27.43 %	595	1,711	34.77 %
Leg. Dist. 26	90	128	70.31 %	77	520	14.81 %	326	1,394	23.39 %	507	1,388	36.53 %
Leg. Dist. 27	131	191	68.59 %	200	1,005	19.90 %	568	2,297	24.73 %	945	2,588	36.51 %
Leg. Dist. 28	106	166	63.86 %	100	745	13.42 %	327	1,704	19.19 %	526	1,810	29.06 %
Leg. Dist. 29	132	239	55.23 %	94	799	11.76 %	357	1,803	19.80 %	591	2,050	28.83 %
TOTAL:	1,148	1,751	65.56 %	1,239	7,049	17.58 %	5,380	18,833	28.57 %	7,000	18,181	38.50 %
Brighton	411	543	75.69 %	358	1,301	27.52 %	1,143	2,988	38.25 %	2,091	3,406	61.39 %
Chili	335	452	74.12 %	295	1,370	21.53 %	773	2,588	29.87 %	1,607	3,269	49.16 %
Clarkson	5	9	55.56 %	73	265	27.55 %	106	420	25.24 %	402	825	48.73 %
East Rochester	132	174	75.86 %	56	275	20.36 %	199	582	34.19 %	299	689	43.40 %
Gates	143	211	67.77 %	222	1,170	18.97 %	652	2,466	26.44 %	1,222	2,968	41.17 %
Greece	1,053	1,520	69.28 %	902	4,303	20.96 %	2,202	8,018	27.46 %	4,209	9,841	42.77 %
Hamlin	23	33	69.70 %	96	438	21.92 %	198	683	28.99 %	421	1,011	41.64 %
Henrietta	94	129	72.87 %	328	1,281	25.60 %	1,038	3,035	34.20 %	1,773	3,806	46.58 %
Irondequoit	731	1,110	65.86 %	492	2,101	23.42 %	1,431	4,288	33.37 %	2,758	5,570	49.52 %
Mendon	18	32	56.25 %	109	514	21.21 %	163	531	30.70 %	654	1,155	56.62 %
Ogden	147	198	74.24 %	207	852	24.30 %	483	1,638	29.49 %	1,134	2,284	49.65 %
Parma	40	81	49.38 %	178	906	19.65 %	311	1,172	26.54 %	835	1,761	47.42 %
Penfield	356	486	73.25 %	340	1,527	22.27 %	763	2,535	30.10 %	2,212	4,182	52.89 %
Perinton	101	168	60.12 %	476	2,116	22.50 %	1,184	3,627	32.64 %	3,185	5,798	54.93 %
Pittsford	182	236	77.12 %	269	1,245	21.61 %	488	1,644	29.68 %	1,781	3,050	58.39 %
Riga	21	33	63.64 %	70	264	26.52 %	147	450	32.67 %	361	708	50.99 %
Rush	77	93	82.80 %	43	149	28.86 %	85	246	34.55 %	192	370	51.89 %
Sweden	49	71	69.01 %	126	580	21.72 %	276	921	29.97 %	480	1,054	45.54 %
Webster	361	499	72.34 %	335	1,591	21.06 %	1,002	3,220	31.12 %	2,568	5,141	49.95 %
Wheatland	20	31	64.52 %	63	260	24.23 %	136	428	31.78 %	242	553	43.76 %
TOTAL:	4,299	6,109	70.37 %	5,038	22,508	22.38 %	12,780	41,480	30.81 %	28,426	57,441	49.49 %
GRAND TOTAL:	5,447	7,860	69.30 %	6,277	29,557	21.24 %	18,160	60,313	30.11 %	35,426	75,622	46.85 %

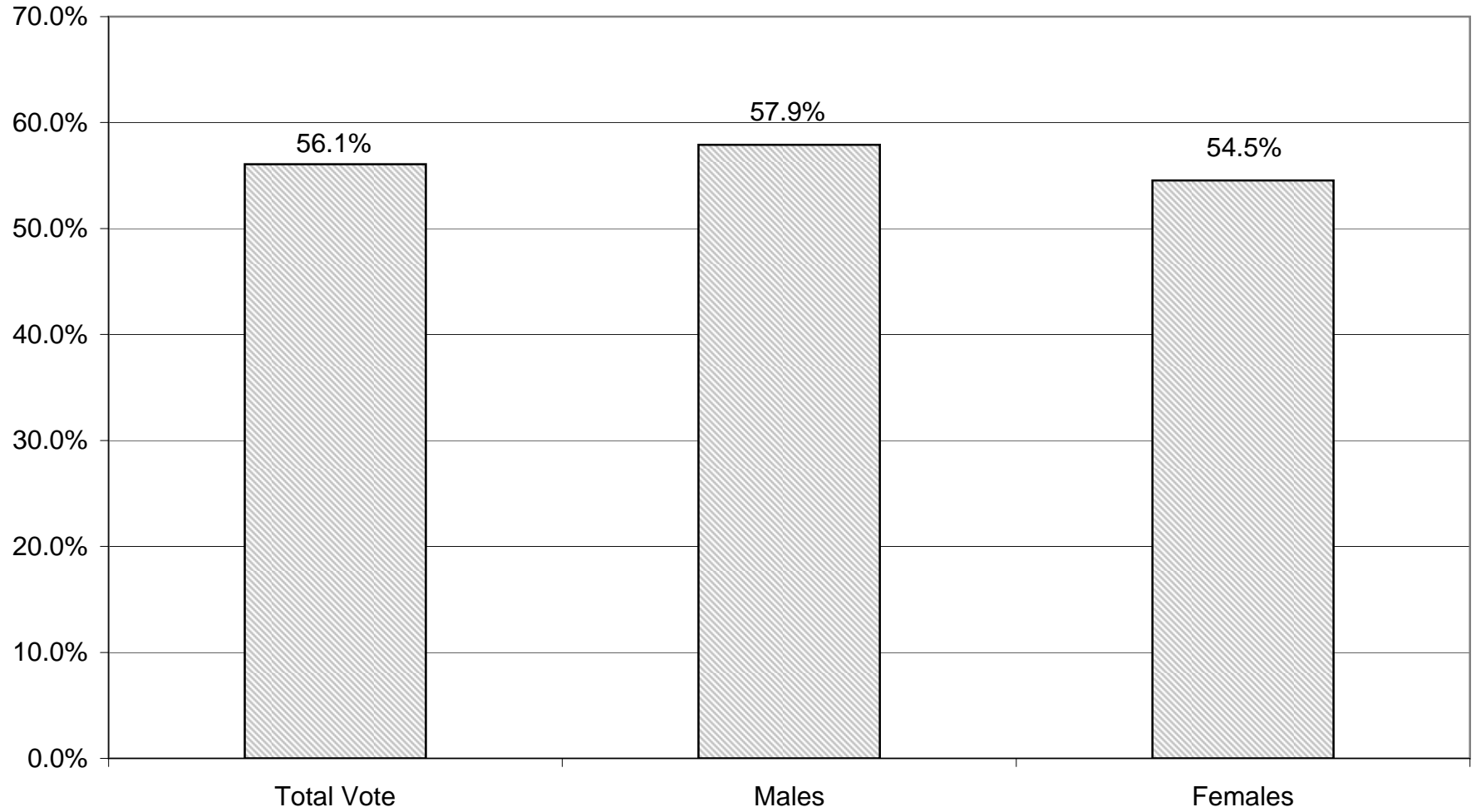
2006 GENERAL ELECTION
VOTER TURNOUT BY AGE

LT/LD SUMMARY
Part 2 of 2

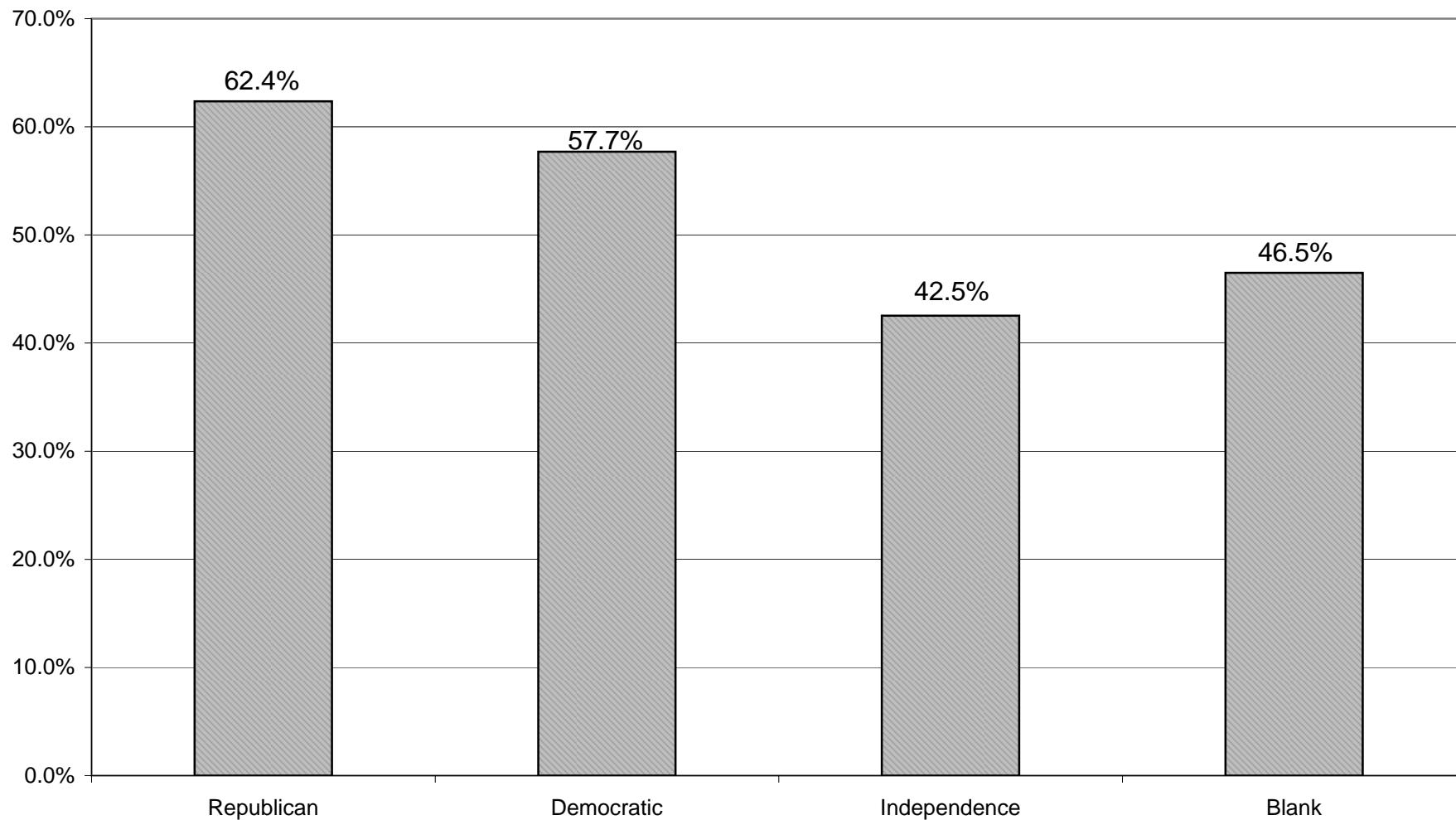
LEGISLATIVE
DISTRICT

OR TOWN	45-54			55-64			65+		
	VOTED	REGISTERED	TURNOUT	VOTED	REGISTERED	TURNOUT	VOTED	REGISTERED	TURNOUT
Leg. Dist. 06	384	622	61.74 %	372	504	73.81 %	424	588	72.11 %
Leg. Dist. 07	179	304	58.88 %	203	290	70.00 %	258	362	71.27 %
Leg. Dist. 21	1,285	2,452	52.41 %	1,196	1,818	65.79 %	1,105	1,649	67.01 %
Leg. Dist. 22	657	1,823	36.04 %	613	1,348	45.47 %	588	1,126	52.22 %
Leg. Dist. 23	1,351	1,939	69.68 %	1,461	1,887	77.42 %	1,108	1,433	77.32 %
Leg. Dist. 24	873	1,295	67.41 %	815	1,098	74.23 %	787	1,129	69.71 %
Leg. Dist. 25	843	1,768	47.68 %	859	1,363	63.02 %	1,027	1,666	61.64 %
Leg. Dist. 26	757	1,399	54.11 %	626	953	65.69 %	573	869	65.94 %
Leg. Dist. 27	1,382	2,609	52.97 %	1,327	2,038	65.11 %	1,121	1,781	62.94 %
Leg. Dist. 28	839	1,903	44.09 %	730	1,336	54.64 %	736	1,276	57.68 %
Leg. Dist. 29	882	2,004	44.01 %	983	1,732	56.76 %	1,055	1,752	60.22 %
TOTAL:	9,432	18,118	52.06 %	9,185	14,367	63.93 %	8,782	13,631	64.43 %
Brighton	3,063	4,113	74.47 %	3,174	3,887	81.66 %	4,190	5,359	78.19 %
Chili	2,481	3,885	63.86 %	2,300	3,107	74.03 %	2,632	3,422	76.91 %
Clarkson	542	882	61.45 %	439	593	74.03 %	491	670	73.28 %
East Rochester	443	746	59.38 %	375	571	65.67 %	444	643	69.05 %
Gates	1,867	3,304	56.51 %	1,965	2,935	66.95 %	3,230	4,539	71.16 %
Greece	7,607	12,795	59.45 %	7,345	10,412	70.54 %	9,435	12,965	72.77 %
Hamlin	755	1,274	59.26 %	694	984	70.53 %	550	764	71.99 %
Henrietta	2,616	4,292	60.95 %	2,449	3,406	71.90 %	3,081	4,099	75.16 %
Irondequoit	4,301	6,786	63.38 %	4,260	5,854	72.77 %	5,954	8,302	71.72 %
Mendon	1,215	1,688	71.98 %	902	1,167	77.29 %	751	1,006	74.65 %
Ogden	1,918	3,024	63.43 %	1,533	2,076	73.84 %	1,492	1,951	76.47 %
Parma	1,457	2,373	61.40 %	1,250	1,730	72.25 %	1,264	1,727	73.19 %
Penfield	3,781	5,621	67.27 %	3,252	4,317	75.33 %	3,760	5,007	75.09 %
Perinton	4,905	7,129	68.80 %	4,969	6,335	78.44 %	5,417	6,774	79.97 %
Pittsford	3,106	4,366	71.14 %	2,855	3,614	79.00 %	3,811	4,604	82.78 %
Riga	593	916	64.74 %	548	691	79.31 %	489	624	78.37 %
Rush	426	640	66.56 %	406	503	80.72 %	371	465	79.78 %
Sweden	909	1,418	64.10 %	916	1,181	77.56 %	845	1,104	76.54 %
Webster	3,805	6,029	63.11 %	3,594	4,828	74.44 %	4,381	5,577	78.55 %
Wheatland	492	735	66.94 %	434	553	78.48 %	499	646	77.24 %
TOTAL:	46,282	72,016	64.27 %	43,660	58,744	74.32 %	53,087	70,248	75.57 %
GRAND TOTAL:	55,714	90,134	61.81 %	52,845	73,111	72.28 %	61,869	83,879	73.76 %

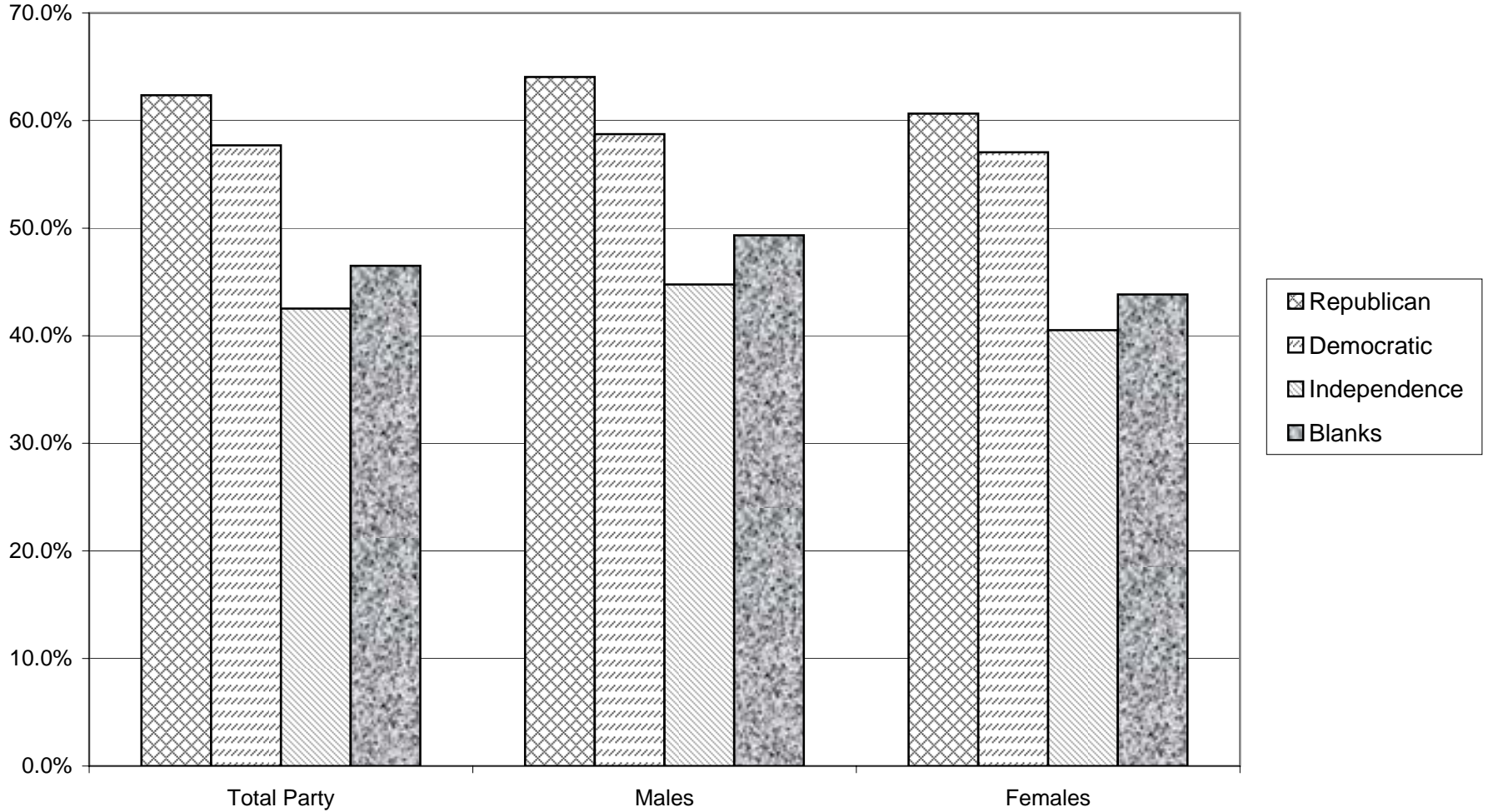
VOTER TURNOUT - TOTAL AND BY GENDER 2006 GENERAL ELECTION



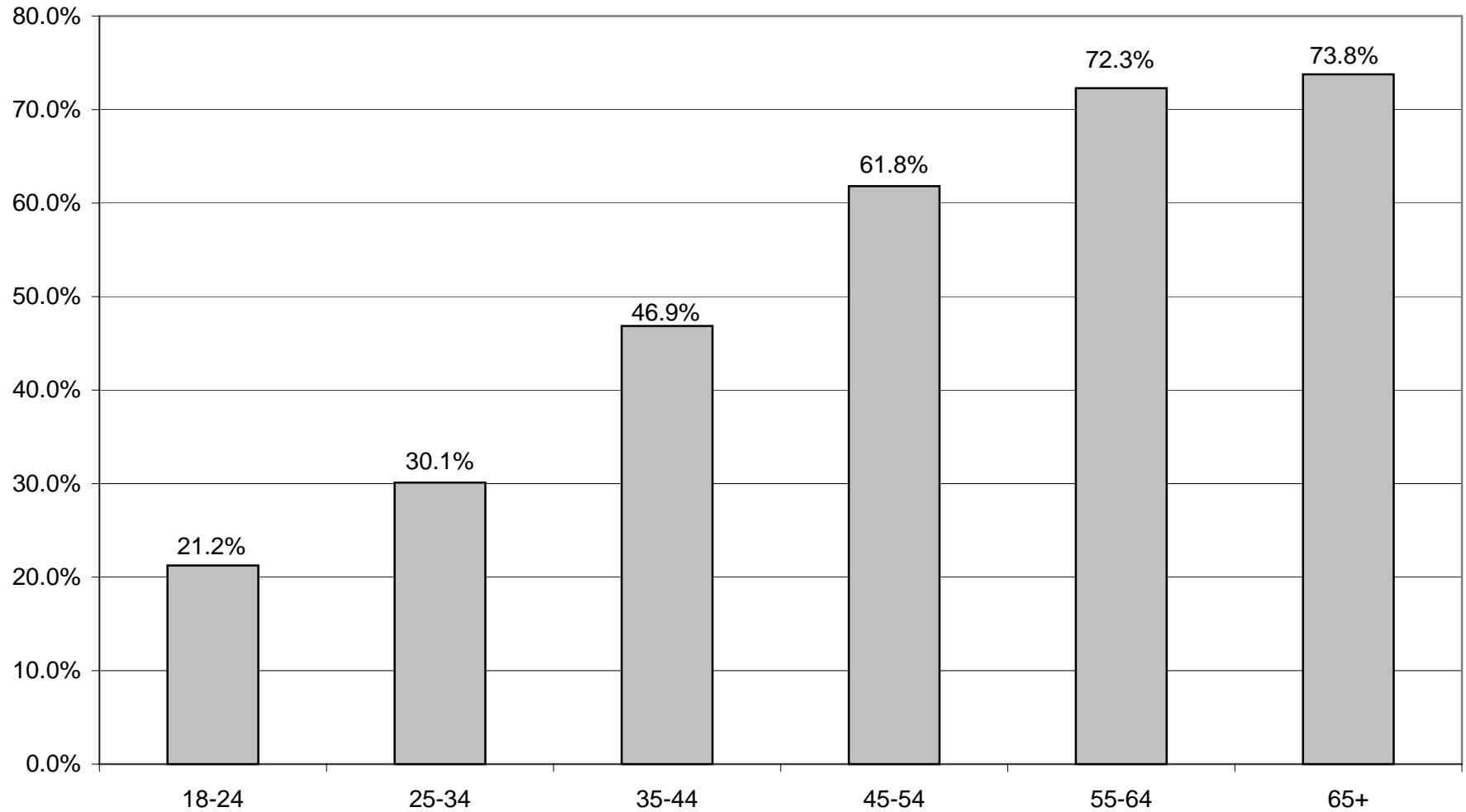
VOTER TURNOUT BY PARTY 2006 GENERAL ELECTION



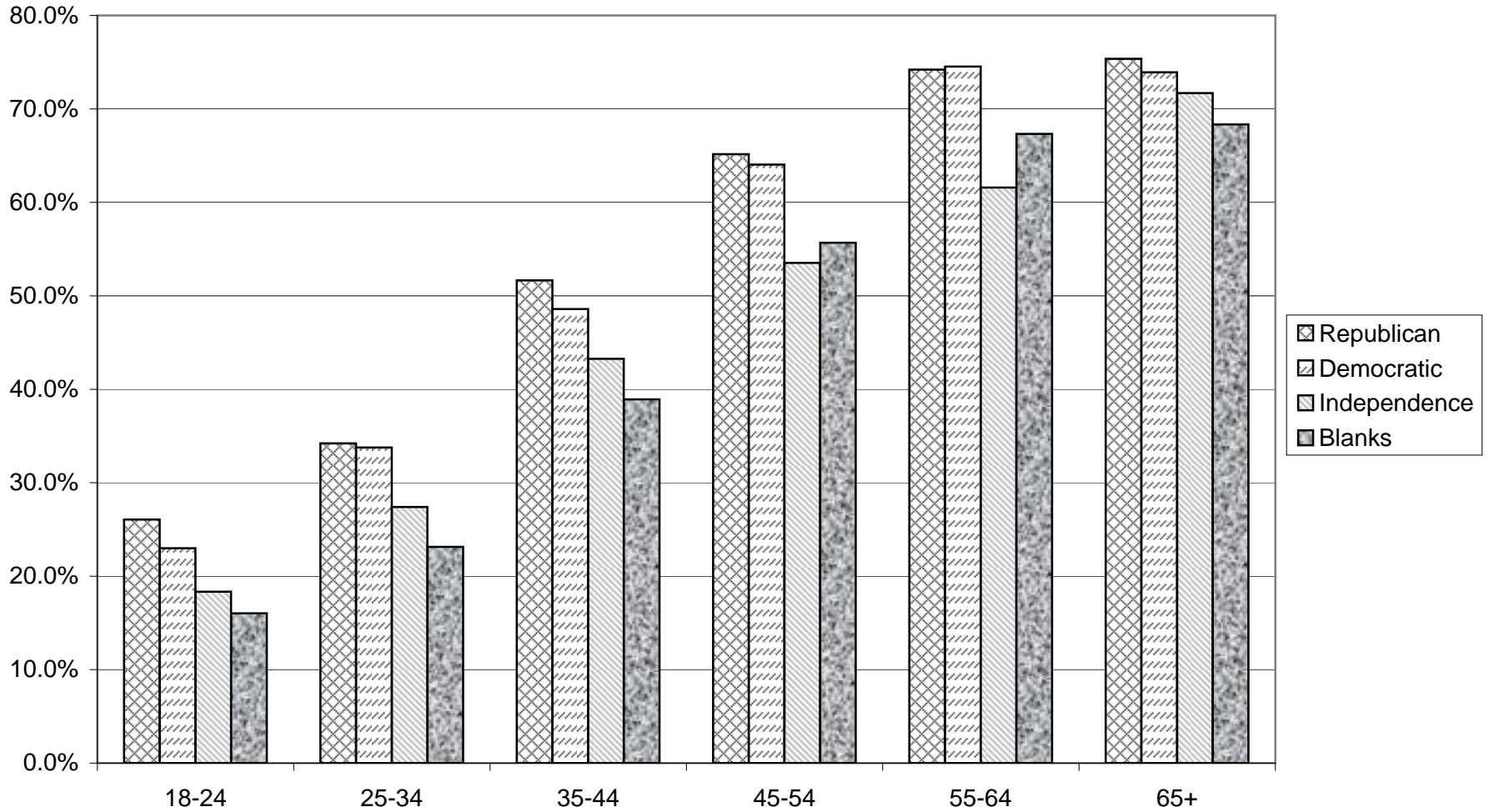
COMPARISON OF TOTAL AND GENDER TURNOUT 2006 GENERAL ELECTION



VOTER TURNOUT BY AGE GROUP 2006 GENERAL ELECTION



COMPARISON OF TURNOUT BY AGE GROUP 2006 GENERAL ELECTION



REPUBLICAN SUMMARY

2006 GENERAL ELECTION
REPUBLICAN TURNOUT BY GENDER

LT/LD SUMMARY

LEGISLATIVE DISTRICT OR TOWN CITY	TOTAL VOTERS			MALES			FEMALES		
	VOTED	REGISTERED	TURNOUT	VOTED	REGISTERED	TURNOUT	VOTED	REGISTERED	TURNOUT
Leg. Dist. 06	562	923	60.89 %	276	450	61.33 %	286	473	60.47 %
Leg. Dist. 07	282	459	61.44 %	139	229	60.70 %	143	230	62.17 %
Leg. Dist. 21	1,062	1,918	55.37 %	523	925	56.54 %	539	993	54.28 %
Leg. Dist. 22	195	614	31.76 %	87	294	29.59 %	108	320	33.75 %
Leg. Dist. 23	1,370	2,405	56.96 %	788	1,316	59.88 %	582	1,089	53.44 %
Leg. Dist. 24	743	1,294	57.42 %	373	650	57.38 %	370	644	57.45 %
Leg. Dist. 25	414	922	44.90 %	222	486	45.68 %	192	436	44.04 %
Leg. Dist. 26	789	1,506	52.39 %	392	737	53.19 %	397	769	51.63 %
Leg. Dist. 27	645	1,250	51.60 %	325	613	53.02 %	320	637	50.24 %
Leg. Dist. 28	654	1,533	42.66 %	338	762	44.36 %	316	771	40.99 %
Leg. Dist. 29	757	1,580	47.91 %	386	775	49.81 %	371	805	46.09 %
TOTAL:	7,473	14,404	51.88 %	3,849	7,237	53.19 %	3,624	7,167	50.57 %
TOWNS									
Brighton	4,365	6,497	67.18 %	2,182	3,137	69.56 %	2,183	3,360	64.97 %
Chili	4,670	7,276	64.18 %	2,366	3,646	64.89 %	2,304	3,630	63.47 %
Clarkson	1,034	1,625	63.63 %	554	842	65.80 %	480	783	61.30 %
East Rochester	752	1,341	56.08 %	371	645	57.52 %	381	696	54.74 %
Gates	3,843	6,413	59.93 %	1,926	3,137	61.40 %	1,917	3,276	58.52 %
Greece	14,679	24,073	60.98 %	7,464	11,935	62.54 %	7,215	12,138	59.44 %
Hamlin	1,492	2,412	61.86 %	786	1,243	63.23 %	706	1,169	60.39 %
Henrietta	4,498	7,362	61.10 %	2,392	3,749	63.80 %	2,106	3,613	58.29 %
Irondequoit	7,312	11,773	62.11 %	3,671	5,723	64.14 %	3,641	6,050	60.18 %
Mendon	1,788	2,802	63.81 %	967	1,468	65.87 %	821	1,334	61.54 %
Ogden	3,352	5,217	64.25 %	1,754	2,624	66.84 %	1,598	2,593	61.63 %
Parma	2,539	4,164	60.98 %	1,335	2,168	61.58 %	1,204	1,996	60.32 %
Penfield	6,198	9,510	65.17 %	3,217	4,802	66.99 %	2,981	4,708	63.32 %
Perinton	9,012	13,482	66.84 %	4,650	6,775	68.63 %	4,362	6,707	65.04 %
Pittsford	5,603	8,136	68.87 %	2,907	4,168	69.75 %	2,696	3,968	67.94 %
Riga	1,172	1,764	66.44 %	610	886	68.85 %	562	878	64.01 %
Rush	737	1,078	68.37 %	387	554	69.86 %	350	524	66.79 %
Sweden	1,588	2,598	61.12 %	807	1,308	61.70 %	781	1,290	60.54 %
Webster	6,631	10,391	63.81 %	3,459	5,221	66.25 %	3,172	5,170	61.35 %
Wheatland	832	1,313	63.37 %	409	633	64.61 %	423	680	62.21 %
TOTAL:	82,097	129,227	63.53 %	42,214	64,664	65.28 %	39,883	64,563	61.77 %
GRAND TOTAL:	89,570	143,631	62.36 %	46,063	71,901	64.06 %	43,507	71,730	60.65 %

2006 GENERAL ELECTION
REPUBLICAN TURNOUT BY AGE

LT/LD SUMMARY
Part 1 of 2

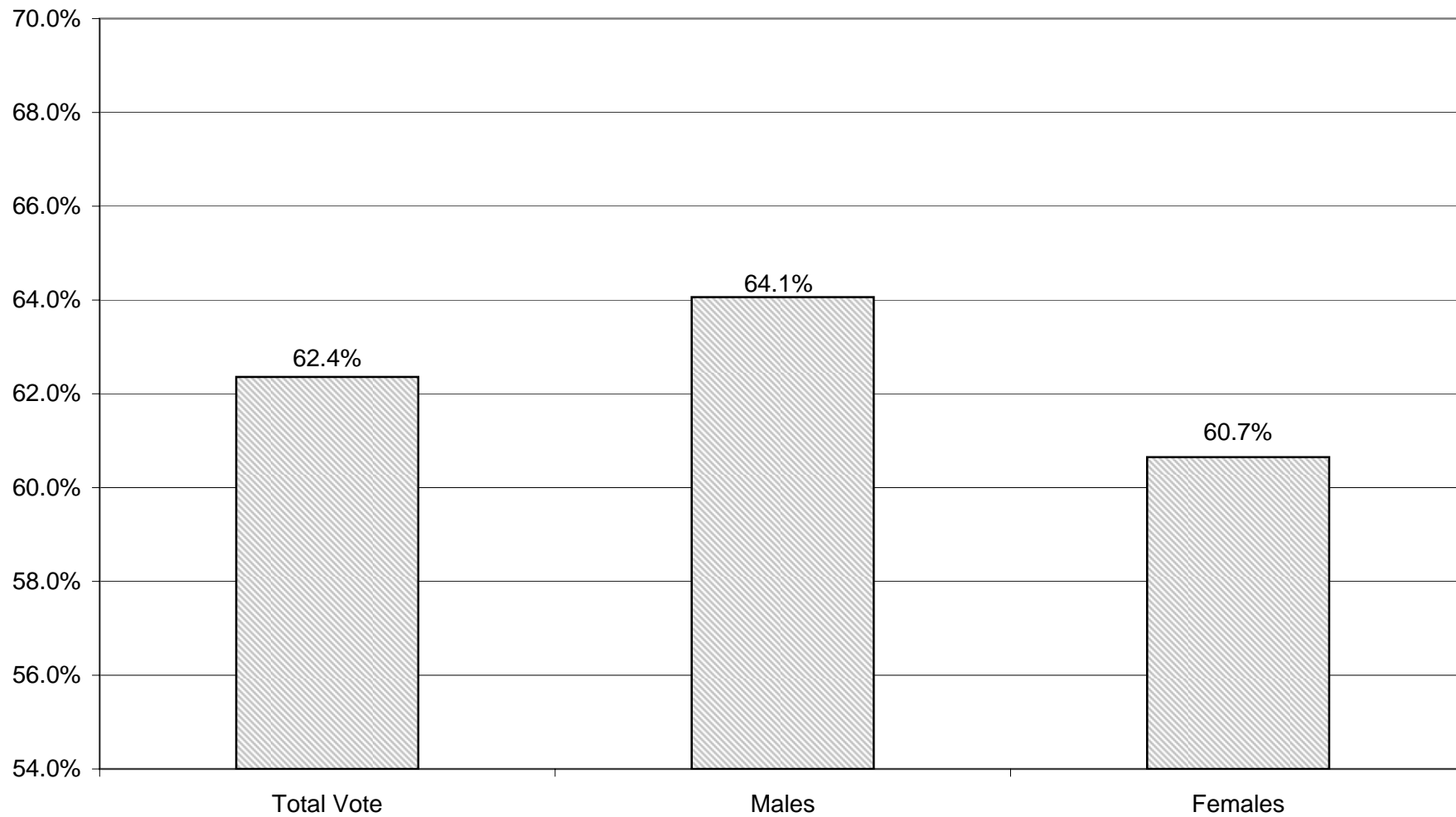
LEGISLATIVE DISTRICT OR TOWN CITY	NDOB			18-24			25-34			35-44		
	VOTED	REGISTERED	TURNOUT	VOTED	REGISTERED	TURNOUT	VOTED	REGISTERED	TURNOUT	VOTED	REGISTERED	TURNOUT
Leg. Dist. 06	31	43	72.09 %	8	31	25.81 %	34	115	29.57 %	86	172	50.00 %
Leg. Dist. 07	20	28	71.43 %	8	17	47.06 %	8	31	25.81 %	21	53	39.62 %
Leg. Dist. 21	107	172	62.21 %	17	76	22.37 %	107	306	34.97 %	164	334	49.10 %
Leg. Dist. 22	12	23	52.17 %	5	37	13.51 %	9	90	10.00 %	24	115	20.87 %
Leg. Dist. 23	86	134	64.18 %	23	87	26.44 %	200	573	34.90 %	245	464	52.80 %
Leg. Dist. 24	50	74	67.57 %	11	38	28.95 %	91	217	41.94 %	107	188	56.91 %
Leg. Dist. 25	20	45	44.44 %	8	65	12.31 %	45	151	29.80 %	49	152	32.24 %
Leg. Dist. 26	56	82	68.29 %	15	67	22.39 %	70	211	33.18 %	103	277	37.18 %
Leg. Dist. 27	54	83	65.06 %	17	79	21.52 %	61	201	30.35 %	76	191	39.79 %
Leg. Dist. 28	54	83	65.06 %	9	65	13.85 %	38	200	19.00 %	91	276	32.97 %
Leg. Dist. 29	65	117	55.56 %	14	70	20.00 %	52	174	29.89 %	82	273	30.04 %
TOTAL:	555	884	62.78 %	135	632	21.36 %	715	2,269	31.51 %	1,048	2,495	42.00 %
TOWNS												
Brighton	278	369	75.34 %	70	215	32.56 %	272	690	39.42 %	564	956	59.00 %
Chili	218	294	74.15 %	116	384	30.21 %	273	777	35.14 %	729	1,318	55.31 %
Clarkson	3	6	50.00 %	30	85	35.29 %	39	134	29.10 %	201	365	55.07 %
East Rochester	80	103	77.67 %	17	57	29.82 %	47	151	31.13 %	98	255	38.43 %
Gates	92	129	71.32 %	81	258	31.40 %	202	630	32.06 %	455	990	45.96 %
Greece	721	1,055	68.34 %	311	1,200	25.92 %	762	2,291	33.26 %	1,823	3,748	48.64 %
Hamlin	19	26	73.08 %	45	152	29.61 %	96	240	40.00 %	215	439	48.97 %
Henrietta	54	78	69.23 %	78	332	23.49 %	314	845	37.16 %	685	1,338	51.20 %
Irondequoit	459	709	64.74 %	135	511	26.42 %	370	1,028	35.99 %	894	1,763	50.71 %
Mendon	13	25	52.00 %	40	174	22.99 %	55	195	28.21 %	299	522	57.28 %
Ogden	93	128	72.66 %	79	279	28.32 %	205	552	37.14 %	542	969	55.93 %
Parma	25	56	44.64 %	75	271	27.68 %	136	378	35.98 %	369	706	52.27 %
Penfield	241	319	75.55 %	117	433	27.02 %	252	745	33.83 %	984	1,764	55.78 %
Perinton	66	110	60.00 %	151	577	26.17 %	375	1,063	35.28 %	1,390	2,513	55.31 %
Pittsford	130	172	75.58 %	77	366	21.04 %	162	491	32.99 %	752	1,294	58.11 %
Riga	15	25	60.00 %	38	106	35.85 %	57	142	40.14 %	198	333	59.46 %
Rush	59	74	79.73 %	10	48	20.83 %	33	79	41.77 %	79	153	51.63 %
Sweden	35	47	74.47 %	44	177	24.86 %	86	284	30.28 %	208	444	46.85 %
Webster	202	281	71.89 %	99	429	23.08 %	320	976	32.79 %	1,062	1,981	53.61 %
Wheatland	14	19	73.68 %	17	87	19.54 %	52	139	37.41 %	91	211	43.13 %
TOTAL:	2,817	4,025	69.99 %	1,630	6,141	26.54 %	4,108	11,830	34.73 %	11,638	22,062	52.75 %
GRAND TOTAL:	3,372	4,909	68.69 %	1,765	6,773	26.06 %	4,823	14,099	34.21 %	12,686	24,557	51.66 %

2006 GENERAL ELECTION
REPUBLICAN TURNOUT BY AGE

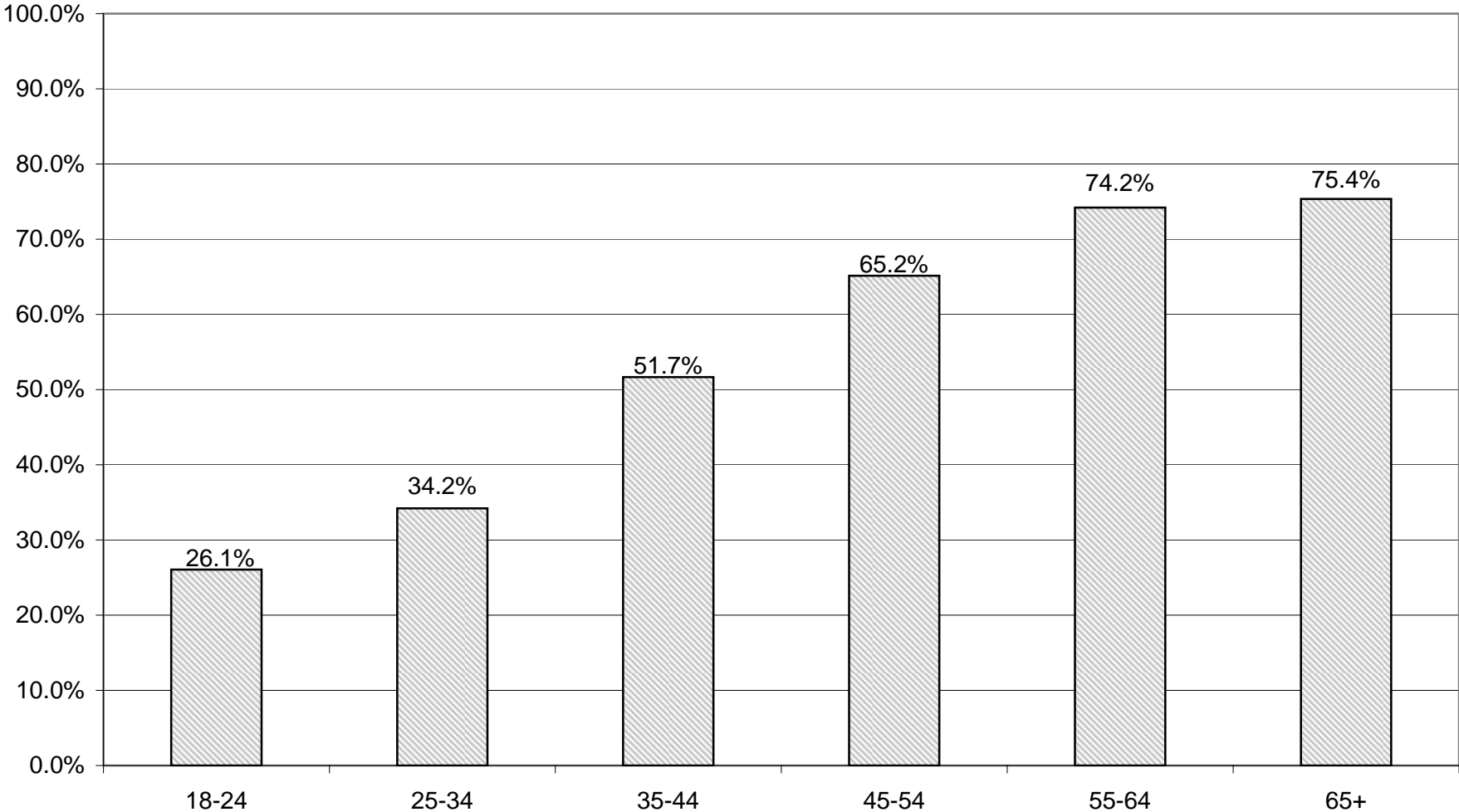
LT/LD SUMMARY
Part 2 of 2

LEGISLATIVE DISTRICT OR TOWN CITY	45-54			55-64			65+		
	VOTED	REGISTERED	TURNOUT	VOTED	REGISTERED	TURNOUT	VOTED	REGISTERED	TURNOUT
Leg. Dist. 06	114	156	73.08 %	117	161	72.67 %	172	245	70.20 %
Leg. Dist. 07	55	89	61.80 %	50	78	64.10 %	120	163	73.62 %
Leg. Dist. 21	188	338	55.62 %	188	267	70.41 %	291	425	68.47 %
Leg. Dist. 22	48	135	35.56 %	45	97	46.39 %	52	117	44.44 %
Leg. Dist. 23	257	393	65.39 %	262	355	73.80 %	297	399	74.44 %
Leg. Dist. 24	127	230	55.22 %	117	181	64.64 %	240	366	65.57 %
Leg. Dist. 25	74	147	50.34 %	81	133	60.90 %	137	229	59.83 %
Leg. Dist. 26	199	348	57.18 %	148	229	64.63 %	198	292	67.81 %
Leg. Dist. 27	139	243	57.20 %	131	196	66.84 %	167	257	64.98 %
Leg. Dist. 28	158	321	49.22 %	128	246	52.03 %	176	342	51.46 %
Leg. Dist. 29	130	276	47.10 %	154	279	55.20 %	260	391	66.50 %
TOTAL:	1,489	2,676	55.64 %	1,421	2,222	63.95 %	2,110	3,226	65.41 %
TOWNS									
Brighton	756	1,083	69.81 %	797	1,032	77.23 %	1,628	2,152	75.65 %
Chili	1,058	1,545	68.48 %	892	1,160	76.90 %	1,384	1,798	76.97 %
Clarkson	261	384	67.97 %	205	259	79.15 %	295	392	75.26 %
East Rochester	178	274	64.96 %	122	200	61.00 %	210	301	69.77 %
Gates	711	1,183	60.10 %	739	1,081	68.36 %	1,563	2,142	72.97 %
Greece	3,050	4,869	62.64 %	2,829	3,861	73.27 %	5,183	7,049	73.53 %
Hamlin	389	602	64.62 %	365	481	75.88 %	363	472	76.91 %
Henrietta	1,005	1,594	63.05 %	874	1,209	72.29 %	1,488	1,966	75.69 %
Irondequoit	1,418	2,161	65.62 %	1,337	1,828	73.14 %	2,699	3,773	71.53 %
Mendon	521	758	68.73 %	408	530	76.98 %	452	598	75.59 %
Ogden	896	1,305	68.66 %	690	902	76.50 %	847	1,082	78.28 %
Parma	609	971	62.72 %	548	749	73.16 %	777	1,033	75.22 %
Penfield	1,542	2,259	68.26 %	1,146	1,507	76.05 %	1,916	2,483	77.16 %
Perinton	2,124	3,057	69.48 %	1,970	2,497	78.89 %	2,936	3,665	80.11 %
Pittsford	1,275	1,860	68.55 %	1,104	1,399	78.91 %	2,103	2,554	82.34 %
Riga	283	422	67.06 %	284	354	80.23 %	297	382	77.75 %
Rush	177	263	67.30 %	161	196	82.14 %	218	265	82.26 %
Sweden	380	568	66.90 %	381	503	75.75 %	454	575	78.96 %
Webster	1,491	2,309	64.57 %	1,309	1,737	75.36 %	2,148	2,678	80.21 %
Wheatland	210	282	74.47 %	189	240	78.75 %	259	335	77.31 %
TOTAL:	18,334	27,749	66.07 %	16,350	21,725	75.26 %	27,220	35,695	76.26 %
GRAND TOTAL:	19,823	30,425	65.15 %	17,771	23,947	74.21 %	29,330	38,921	75.36 %

REPUBLICAN TURNOUT - TOTAL AND GENDER 2006 GENERAL ELECTION



REPUBLICAN TURNOUT BY AGE GROUP 2006 GENERAL ELECTION



DEMOCRATIC SUMMARY

2006 GENERAL ELECTION
DEMOCRATIC TURNOUT BY GENDER

LT/LD SUMMARY

LEGISLATIVE DISTRICT OR TOWN CITY	TOTAL VOTERS			MALES			FEMALES		
	VOTED	REGISTERED	TURNOUT	VOTED	REGISTERED	TURNOUT	VOTED	REGISTERED	TURNOUT
Leg. Dist. 06	673	1,106	60.85 %	265	408	64.95 %	408	698	58.45 %
Leg. Dist. 07	334	571	58.49 %	129	222	58.11 %	205	349	58.74 %
Leg. Dist. 21	3,554	7,314	48.59 %	1,409	2,874	49.03 %	2,145	4,440	48.31 %
Leg. Dist. 22	2,254	6,597	34.17 %	823	2,573	31.99 %	1,431	4,024	35.56 %
Leg. Dist. 23	3,768	5,727	65.79 %	1,659	2,464	67.33 %	2,109	3,263	64.63 %
Leg. Dist. 24	2,392	3,502	68.30 %	1,022	1,459	70.05 %	1,370	2,043	67.06 %
Leg. Dist. 25	3,027	6,575	46.04 %	1,221	2,663	45.85 %	1,806	3,912	46.17 %
Leg. Dist. 26	1,515	3,247	46.66 %	578	1,242	46.54 %	937	2,005	46.73 %
Leg. Dist. 27	4,281	8,910	48.05 %	1,602	3,356	47.74 %	2,679	5,554	48.24 %
Leg. Dist. 28	2,067	5,025	41.13 %	807	1,927	41.88 %	1,260	3,098	40.67 %
Leg. Dist. 29	2,729	6,459	42.25 %	1,015	2,449	41.45 %	1,714	4,010	42.74 %
TOTAL:	26,594	55,033	48.32 %	10,530	21,637	48.67 %	16,064	33,396	48.10 %
TOWNS									
Brighton	6,621	9,029	73.33 %	2,549	3,503	72.77 %	4,072	5,526	73.69 %
Chili	3,172	5,316	59.67 %	1,307	2,110	61.94 %	1,865	3,206	58.17 %
Clarkson	542	943	57.48 %	228	384	59.38 %	314	559	56.17 %
East Rochester	643	1,103	58.30 %	251	424	59.20 %	392	679	57.73 %
Gates	3,327	5,943	55.98 %	1,305	2,333	55.94 %	2,022	3,610	56.01 %
Greece	9,644	16,938	56.94 %	3,791	6,472	58.58 %	5,853	10,466	55.92 %
Hamlin	626	1,186	52.78 %	262	487	53.80 %	364	699	52.07 %
Henrietta	4,079	6,624	61.58 %	1,642	2,618	62.72 %	2,437	4,006	60.83 %
Irondequoit	7,367	11,856	62.14 %	2,831	4,383	64.59 %	4,536	7,473	60.70 %
Mendon	1,017	1,556	65.36 %	389	590	65.93 %	628	966	65.01 %
Ogden	1,774	2,928	60.59 %	714	1,164	61.34 %	1,060	1,764	60.09 %
Parma	1,264	2,229	56.71 %	492	877	56.10 %	772	1,352	57.10 %
Penfield	4,379	6,631	66.04 %	1,713	2,532	67.65 %	2,666	4,099	65.04 %
Perinton	5,979	8,879	67.34 %	2,305	3,320	69.43 %	3,674	5,559	66.09 %
Pittsford	3,825	5,291	72.29 %	1,521	2,025	75.11 %	2,304	3,266	70.55 %
Riga	488	812	60.10 %	179	314	57.01 %	309	498	62.05 %
Rush	454	642	70.72 %	191	258	74.03 %	263	384	68.49 %
Sweden	1,112	1,815	61.27 %	462	715	64.62 %	650	1,100	59.09 %
Webster	5,005	7,689	65.09 %	2,015	2,946	68.40 %	2,990	4,743	63.04 %
Wheatland	585	923	63.38 %	259	386	67.10 %	326	537	60.71 %
TOTAL:	61,903	98,333	62.95 %	24,406	37,841	64.50 %	37,497	60,492	61.99 %
GRAND TOTAL:	88,497	153,366	57.70 %	34,936	59,478	58.74 %	53,561	93,888	57.05 %

2006 GENERAL ELECTION
DEMOCRATIC TURNOUT BY AGE

LT/LD SUMMARY
Part 1 of 2

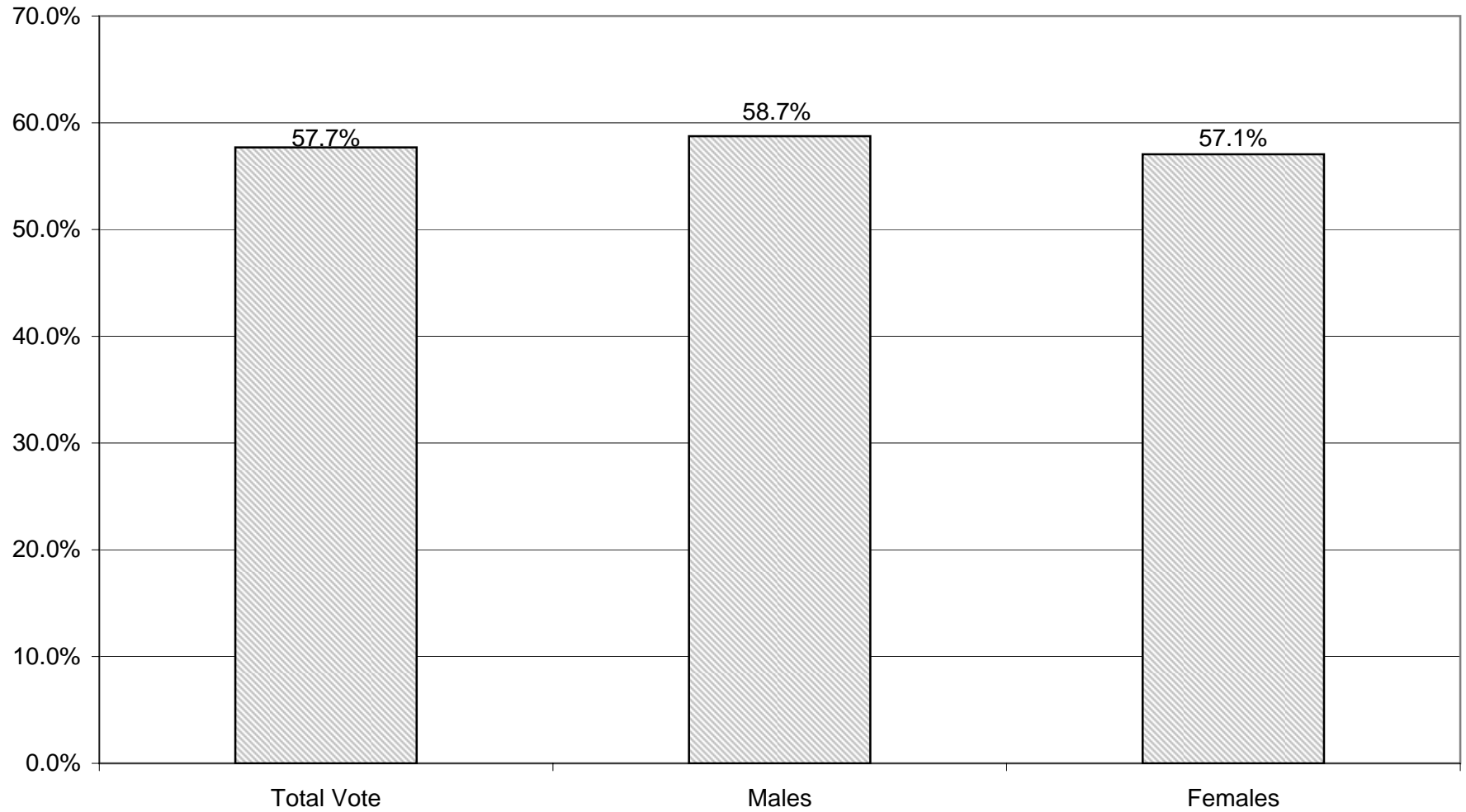
LEGISLATIVE DISTRICT OR TOWN CITY	NDOB			18-24			25-34			35-44		
	VOTED	REGISTERED	TURNOUT	VOTED	REGISTERED	TURNOUT	VOTED	REGISTERED	TURNOUT	VOTED	REGISTERED	TURNOUT
Leg. Dist. 06	18	24	75.00 %	13	53	24.53 %	62	182	34.07 %	104	196	53.06 %
Leg. Dist. 07	4	10	40.00 %	11	36	30.56 %	16	72	22.22 %	28	71	39.44 %
Leg. Dist. 21	94	128	73.44 %	92	522	17.62 %	490	1,492	32.84 %	643	1,538	41.81 %
Leg. Dist. 22	32	62	51.61 %	68	608	11.18 %	228	1,243	18.34 %	340	1,290	26.36 %
Leg. Dist. 23	69	88	78.41 %	104	357	29.13 %	716	1,443	49.62 %	664	1,052	63.12 %
Leg. Dist. 24	41	56	73.21 %	68	182	37.36 %	405	721	56.17 %	420	647	64.91 %
Leg. Dist. 25	56	75	74.67 %	115	608	18.91 %	311	1,100	28.27 %	444	1,208	36.75 %
Leg. Dist. 26	30	40	75.00 %	32	256	12.50 %	180	662	27.19 %	294	721	40.78 %
Leg. Dist. 27	66	93	70.97 %	139	692	20.09 %	401	1,473	27.22 %	751	1,865	40.27 %
Leg. Dist. 28	40	68	58.82 %	66	381	17.32 %	214	949	22.55 %	336	1,011	33.23 %
Leg. Dist. 29	62	110	56.36 %	59	485	12.16 %	240	1,084	22.14 %	413	1,272	32.47 %
TOTAL:	512	754	67.90 %	767	4,180	18.35 %	3,263	10,421	31.31 %	4,437	10,871	40.82 %
TOWNS												
Brighton	96	124	77.42 %	196	604	32.45 %	518	1,189	43.57 %	966	1,385	69.75 %
Chili	99	133	74.44 %	79	391	20.20 %	256	774	33.07 %	451	899	50.17 %
Clarkson	2	3	66.67 %	16	69	23.19 %	38	117	32.48 %	91	186	48.92 %
East Rochester	43	58	74.14 %	20	87	22.99 %	82	164	50.00 %	98	203	48.28 %
Gates	43	70	61.43 %	74	412	17.96 %	236	777	30.37 %	406	936	43.38 %
Greece	257	362	70.99 %	296	1,224	24.18 %	695	2,321	29.94 %	1,166	2,707	43.07 %
Hamlin	3	6	50.00 %	19	103	18.45 %	67	178	37.64 %	96	226	42.48 %
Henrietta	31	34	91.18 %	154	465	33.12 %	394	980	40.20 %	628	1,238	50.73 %
Irondequoit	201	307	65.47 %	182	724	25.14 %	555	1,422	39.03 %	1,049	1,939	54.10 %
Mendon	1	3	33.33 %	38	155	24.52 %	45	158	28.48 %	182	298	61.07 %
Ogden	41	52	78.85 %	55	201	27.36 %	139	410	33.90 %	277	527	52.56 %
Parma	11	20	55.00 %	31	187	16.58 %	74	257	28.79 %	193	404	47.77 %
Penfield	89	126	70.63 %	120	450	26.67 %	243	683	35.58 %	617	1,066	57.88 %
Perinton	21	40	52.50 %	183	671	27.27 %	439	1,121	39.16 %	936	1,504	62.23 %
Pittsford	34	43	79.07 %	109	405	26.91 %	161	485	33.20 %	568	840	67.62 %
Riga	5	7	71.43 %	12	56	21.43 %	37	123	30.08 %	66	138	47.83 %
Rush	17	18	94.44 %	22	48	45.83 %	28	77	36.36 %	59	92	64.13 %
Sweden	14	22	63.64 %	48	194	24.74 %	94	263	35.74 %	124	247	50.20 %
Webster	118	167	70.66 %	120	454	26.43 %	345	927	37.22 %	765	1,390	55.04 %
Wheatland	3	9	33.33 %	23	69	33.33 %	45	115	39.13 %	66	152	43.42 %
TOTAL:	1,129	1,604	70.39 %	1,797	6,969	25.79 %	4,491	12,541	35.81 %	8,804	16,377	53.76 %
GRAND TOTAL:	1,641	2,358	69.59 %	2,564	11,149	23.00 %	7,754	22,962	33.77 %	13,241	27,248	48.59 %

2006 GENERAL ELECTION
DEMOCRATIC TURNOUT BY AGE

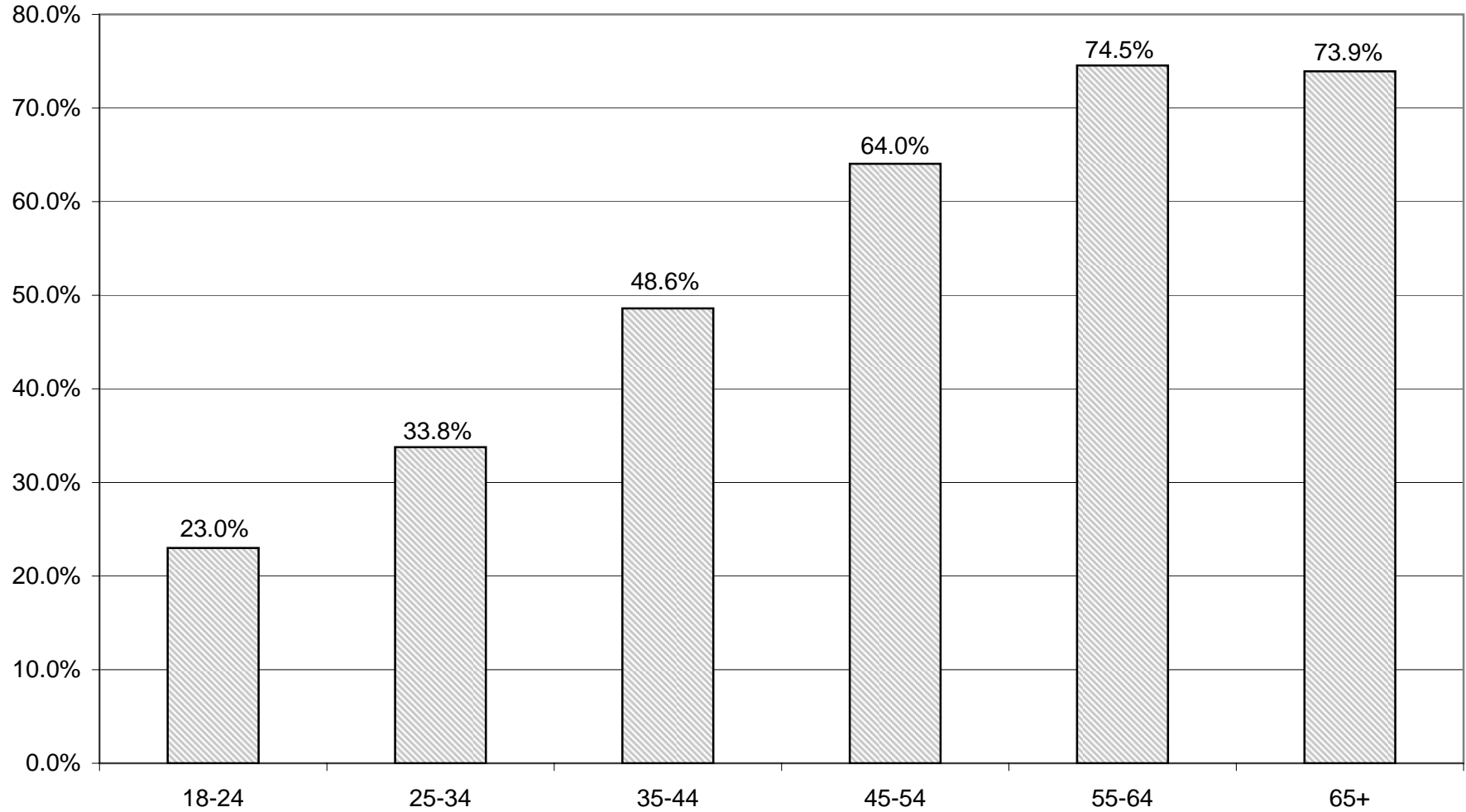
LT/LD SUMMARY
Part 2 of 2

LEGISLATIVE DISTRICT OR TOWN CITY	45-54			55-64			65+		
	VOTED	REGISTERED	TURNOUT	VOTED	REGISTERED	TURNOUT	VOTED	REGISTERED	TURNOUT
Leg. Dist. 06	148	235	62.98 %	159	202	78.71 %	169	214	78.97 %
Leg. Dist. 07	74	112	66.07 %	100	127	78.74 %	101	143	70.63 %
Leg. Dist. 21	811	1,515	53.53 %	764	1,153	66.26 %	660	966	68.32 %
Leg. Dist. 22	558	1,393	40.06 %	520	1,076	48.33 %	508	925	54.92 %
Leg. Dist. 23	751	1,006	74.65 %	862	1,045	82.49 %	602	736	81.79 %
Leg. Dist. 24	546	732	74.59 %	509	629	80.92 %	403	535	75.33 %
Leg. Dist. 25	644	1,306	49.31 %	647	1,008	64.19 %	810	1,270	63.78 %
Leg. Dist. 26	347	650	53.38 %	336	482	69.71 %	296	436	67.89 %
Leg. Dist. 27	1,046	1,929	54.22 %	1,019	1,513	67.35 %	859	1,345	63.87 %
Leg. Dist. 28	505	1,098	45.99 %	452	787	57.43 %	454	731	62.11 %
Leg. Dist. 29	599	1,289	46.47 %	664	1,098	60.47 %	692	1,121	61.73 %
TOTAL:	6,029	11,265	53.52 %	6,032	9,120	66.14 %	5,554	8,422	65.95 %
TOWNS									
Brighton	1,493	1,821	81.99 %	1,574	1,785	88.18 %	1,778	2,121	83.83 %
Chili	713	1,083	65.84 %	764	993	76.94 %	810	1,043	77.66 %
Clarkson	129	200	64.50 %	132	181	72.93 %	134	187	71.66 %
East Rochester	132	212	62.26 %	120	167	71.86 %	148	212	69.81 %
Gates	647	1,052	61.50 %	738	1,047	70.49 %	1,183	1,649	71.74 %
Greece	2,193	3,496	62.73 %	2,349	3,195	73.52 %	2,688	3,633	73.99 %
Hamlin	164	271	60.52 %	164	220	74.55 %	113	182	62.09 %
Henrietta	881	1,309	67.30 %	926	1,202	77.04 %	1,065	1,396	76.29 %
Irondequoit	1,573	2,337	67.31 %	1,618	2,162	74.84 %	2,189	2,965	73.83 %
Mendon	335	415	80.72 %	251	308	81.49 %	165	219	75.34 %
Ogden	457	687	66.52 %	415	528	78.60 %	390	523	74.57 %
Parma	356	538	66.17 %	313	413	75.79 %	286	410	69.76 %
Penfield	1,084	1,475	73.49 %	1,088	1,349	80.65 %	1,138	1,482	76.79 %
Perinton	1,407	1,919	73.32 %	1,550	1,884	82.27 %	1,443	1,740	82.93 %
Pittsford	1,030	1,278	80.59 %	972	1,149	84.60 %	951	1,091	87.17 %
Riga	142	210	67.62 %	125	148	84.46 %	101	130	77.69 %
Rush	125	162	77.16 %	118	135	87.41 %	85	110	77.27 %
Sweden	265	381	69.55 %	309	365	84.66 %	258	343	75.22 %
Webster	1,110	1,545	71.84 %	1,167	1,471	79.33 %	1,380	1,735	79.54 %
Wheatland	137	200	68.50 %	141	170	82.94 %	170	208	81.73 %
TOTAL:	14,373	20,591	69.80 %	14,834	18,872	78.60 %	16,475	21,379	77.06 %
GRAND TOTAL:	20,402	31,856	64.04 %	20,866	27,992	74.54 %	22,029	29,801	73.92 %

DEMOCRATIC TURNOUT - TOTAL AND GENDER 2006 GENERAL ELECTION



DEMOCRATIC TURNOUT BY AGE GROUP 2006 GENERAL ELECTION



INDEPENDENCE SUMMARY

2006 GENERAL ELECTION
INDEPENDENCE TURNOUT BY GENDER

LT/LD SUMMARY

LEGISLATIVE DISTRICT OR TOWN	TOTAL VOTERS			MALES			FEMALES		
	VOTED	REGISTERED	TURNOUT	VOTED	REGISTERED	TURNOUT	VOTED	REGISTERED	TURNOUT
CITY									
Leg. Dist. 06	51	111	45.95 %	23	52	44.23 %	28	59	47.46 %
Leg. Dist. 07	22	55	40.00 %	9	25	36.00 %	13	30	43.33 %
Leg. Dist. 21	158	426	37.09 %	77	198	38.89 %	81	228	35.53 %
Leg. Dist. 22	25	144	17.36 %	11	70	15.71 %	14	74	18.92 %
Leg. Dist. 23	215	503	42.74 %	116	249	46.59 %	99	254	38.98 %
Leg. Dist. 24	122	246	49.59 %	56	128	43.75 %	66	118	55.93 %
Leg. Dist. 25	75	202	37.13 %	40	111	36.04 %	35	91	38.46 %
Leg. Dist. 26	82	230	35.65 %	45	110	40.91 %	37	120	30.83 %
Leg. Dist. 27	90	298	30.20 %	47	167	28.14 %	43	131	32.82 %
Leg. Dist. 28	84	265	31.70 %	48	126	38.10 %	36	139	25.90 %
Leg. Dist. 29	73	253	28.85 %	40	126	31.75 %	33	127	25.98 %
TOTAL:	997	2,733	36.48 %	512	1,362	37.59 %	485	1,371	35.38 %
TOWNS									
Brighton	319	639	49.92 %	142	279	50.90 %	177	360	49.17 %
Chili	232	546	42.49 %	109	251	43.43 %	123	295	41.69 %
Clarkson	60	154	38.96 %	34	73	46.58 %	26	81	32.10 %
East Rochester	64	149	42.95 %	31	74	41.89 %	33	75	44.00 %
Gates	195	512	38.09 %	99	249	39.76 %	96	263	36.50 %
Greece	782	1,932	40.48 %	398	901	44.17 %	384	1,031	37.25 %
Hamlin	71	194	36.60 %	34	88	38.64 %	37	106	34.91 %
Henrietta	270	645	41.86 %	140	323	43.34 %	130	322	40.37 %
Irondequoit	512	1,137	45.03 %	265	522	50.77 %	247	615	40.16 %
Mendon	98	191	51.31 %	43	78	55.13 %	55	113	48.67 %
Ogden	154	377	40.85 %	80	187	42.78 %	74	190	38.95 %
Parma	145	318	45.60 %	76	152	50.00 %	69	166	41.57 %
Penfield	363	822	44.16 %	171	379	45.12 %	192	443	43.34 %
Perinton	501	1,014	49.41 %	249	469	53.09 %	252	545	46.24 %
Pittsford	282	522	54.02 %	120	211	56.87 %	162	311	52.09 %
Riga	56	150	37.33 %	22	61	36.07 %	34	89	38.20 %
Rush	27	60	45.00 %	12	27	44.44 %	15	33	45.45 %
Sweden	107	233	45.92 %	55	116	47.41 %	52	117	44.44 %
Webster	423	967	43.74 %	222	477	46.54 %	201	490	41.02 %
Wheatland	45	115	39.13 %	20	51	39.22 %	25	64	39.06 %
TOTAL:	4,706	10,677	44.08 %	2,322	4,968	46.74 %	2,384	5,709	41.76 %
GRAND TOTAL:	5,703	13,410	42.53 %	2,834	6,330	44.77 %	2,869	7,080	40.52 %

2006 GENERAL ELECTION
INDEPENDENCE TURNOUT BY AGE

LT/LD SUMMARY
Part 1 of 2

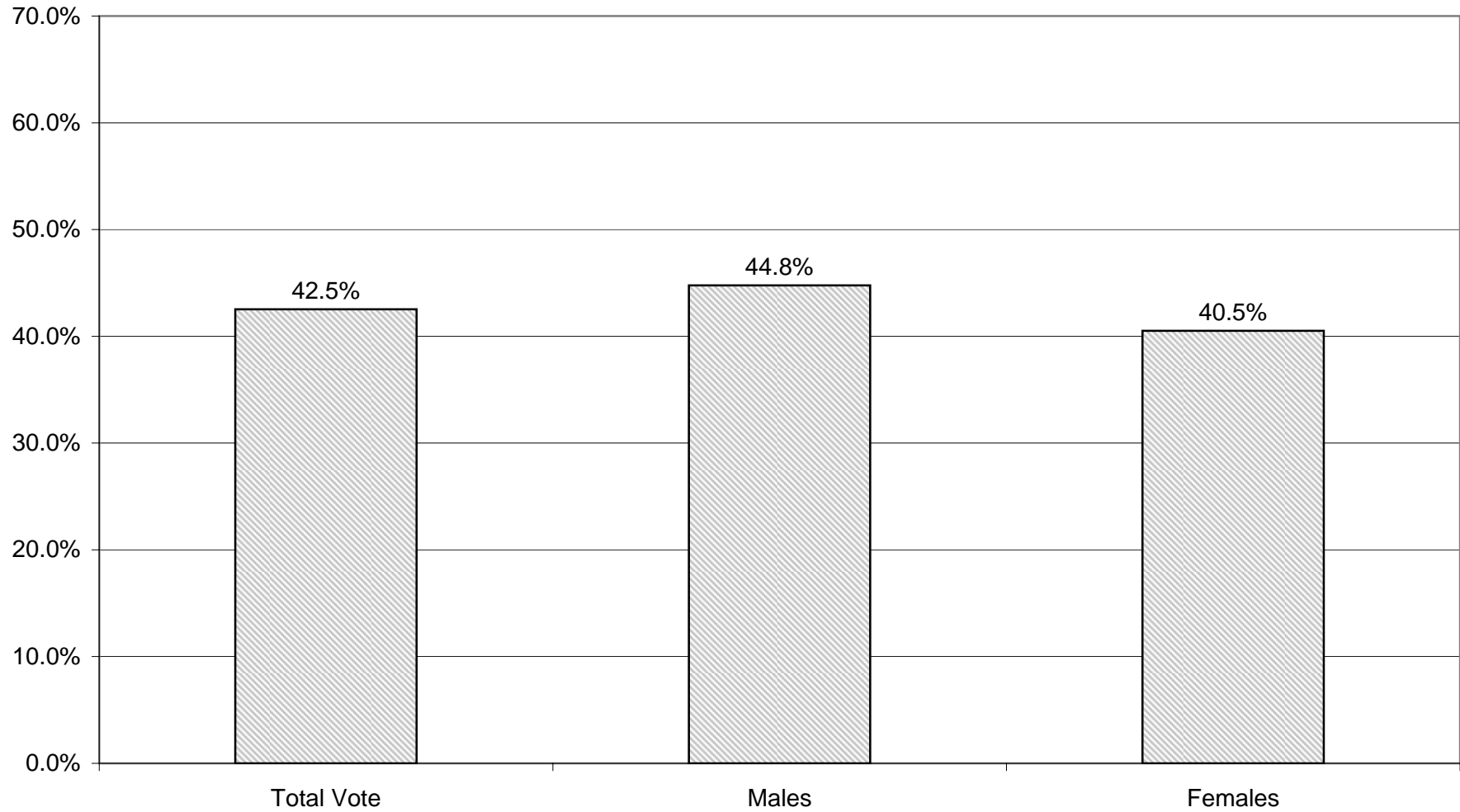
LEGISLATIVE DISTRICT OR TOWN CITY	NDOB			18-24			25-34			35-44		
	VOTED	REGISTERED	TURNOUT	VOTED	REGISTERED	TURNOUT	VOTED	REGISTERED	TURNOUT	VOTED	REGISTERED	TURNOUT
Leg. Dist. 06	0	0	0.00 %	1	9	11.11 %	11	33	33.33 %	12	21	57.14 %
Leg. Dist. 07	0	0	0.00 %	0	0	0.00 %	5	15	33.33 %	7	10	70.00 %
Leg. Dist. 21	0	0	0.00 %	4	34	11.76 %	40	135	29.63 %	43	120	35.83 %
Leg. Dist. 22	0	0	0.00 %	1	25	4.00 %	9	43	20.93 %	3	28	10.71 %
Leg. Dist. 23	0	0	0.00 %	10	38	26.32 %	74	221	33.48 %	56	110	50.91 %
Leg. Dist. 24	2	2	100.00 %	8	25	32.00 %	34	89	38.20 %	32	55	58.18 %
Leg. Dist. 25	0	0	0.00 %	3	26	11.54 %	18	54	33.33 %	16	50	32.00 %
Leg. Dist. 26	0	0	0.00 %	8	32	25.00 %	19	87	21.84 %	15	45	33.33 %
Leg. Dist. 27	0	0	0.00 %	3	28	10.71 %	15	92	16.30 %	25	80	31.25 %
Leg. Dist. 28	1	1	100.00 %	3	37	8.11 %	17	81	20.99 %	19	52	36.54 %
Leg. Dist. 29	0	0	0.00 %	2	29	6.90 %	17	78	21.79 %	13	54	24.07 %
TOTAL:	3	3	100.00 %	43	283	15.19 %	259	928	27.91 %	241	625	38.56 %
TOWNS												
Brighton	0	0	0.00 %	14	69	20.29 %	46	164	28.05 %	77	141	54.61 %
Chili	0	0	0.00 %	16	76	21.05 %	37	139	26.62 %	68	152	44.74 %
Clarkson	0	0	0.00 %	5	17	29.41 %	7	32	21.88 %	20	46	43.48 %
East Rochester	0	0	0.00 %	4	18	22.22 %	13	40	32.50 %	18	38	47.37 %
Gates	0	0	0.00 %	5	64	7.81 %	25	118	21.19 %	55	125	44.00 %
Greece	0	0	0.00 %	47	250	18.80 %	120	455	26.37 %	184	470	39.15 %
Hamlin	0	0	0.00 %	6	34	17.65 %	6	38	15.79 %	11	46	23.91 %
Henrietta	0	0	0.00 %	14	75	18.67 %	50	174	28.74 %	63	162	38.89 %
Irondequoit	0	0	0.00 %	32	139	23.02 %	87	298	29.19 %	131	268	48.88 %
Mendon	0	0	0.00 %	9	36	25.00 %	10	26	38.46 %	19	35	54.29 %
Ogden	0	0	0.00 %	10	53	18.87 %	31	98	31.63 %	38	94	40.43 %
Parma	0	0	0.00 %	6	37	16.22 %	24	74	32.43 %	37	76	48.68 %
Penfield	0	0	0.00 %	18	111	16.22 %	36	166	21.69 %	70	168	41.67 %
Perinton	0	0	0.00 %	19	109	17.43 %	59	227	25.99 %	135	266	50.75 %
Pittsford	0	0	0.00 %	11	69	15.94 %	25	91	27.47 %	77	133	57.89 %
Riga	0	0	0.00 %	4	22	18.18 %	7	36	19.44 %	9	35	25.71 %
Rush	0	0	0.00 %	1	8	12.50 %	5	12	41.67 %	6	14	42.86 %
Sweden	0	0	0.00 %	9	42	21.43 %	21	57	36.84 %	20	48	41.67 %
Webster	0	0	0.00 %	24	122	19.67 %	60	199	30.15 %	95	243	39.09 %
Wheatland	0	0	0.00 %	5	13	38.46 %	6	35	17.14 %	16	28	57.14 %
TOTAL:	0	0	0.00 %	259	1,364	18.99 %	675	2,479	27.23 %	1,149	2,588	44.40 %
GRAND TOTAL:	3	3	100.00 %	302	1,647	18.34 %	934	3,407	27.41 %	1,390	3,213	43.26 %

2006 GENERAL ELECTION
INDEPENDENCE TURNOUT BY AGE

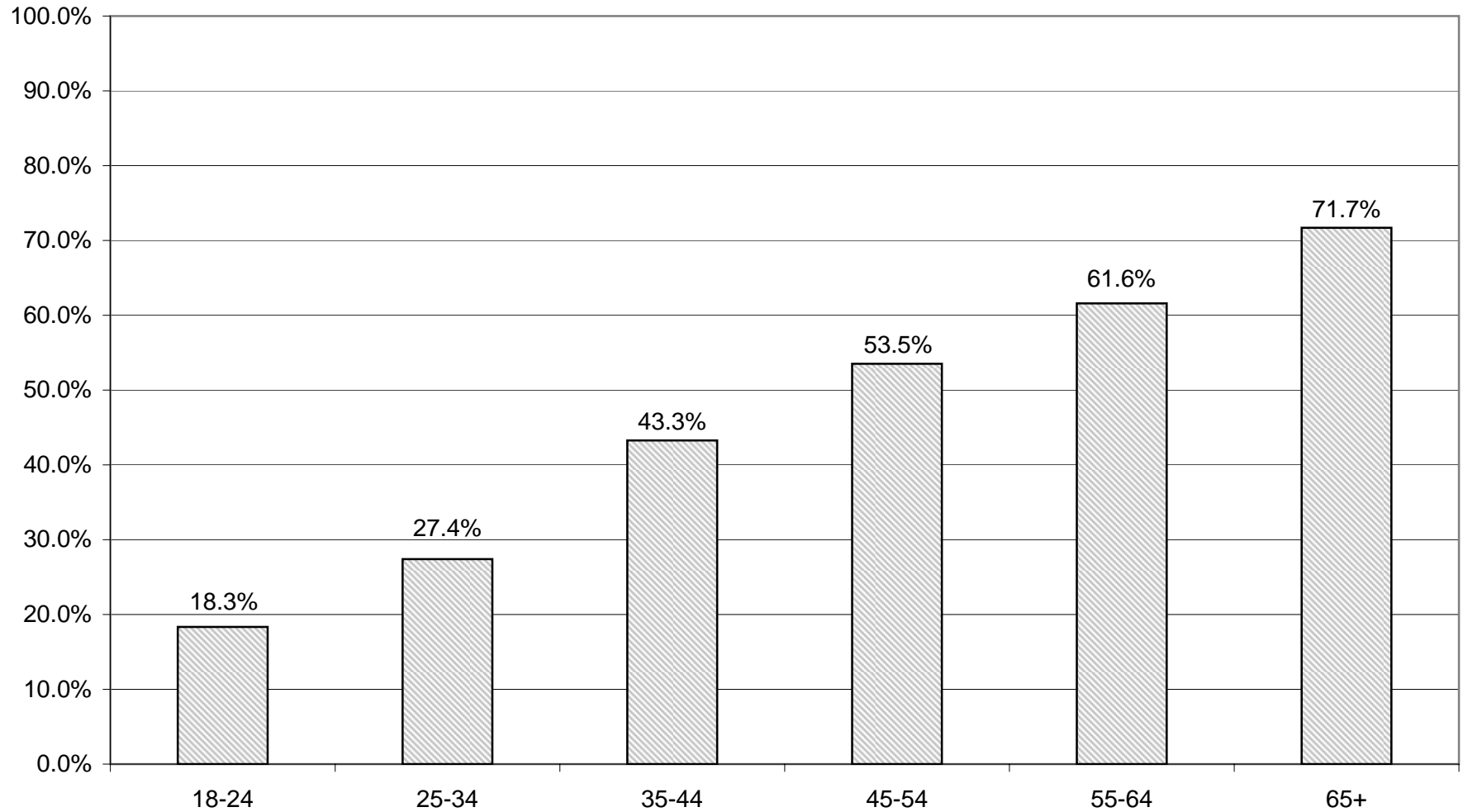
LT/LD SUMMARY
Part 2 of 2

LEGISLATIVE DISTRICT OR TOWN	45-54			55-64			65+		
	VOTED	REGISTERED	TURNOUT	VOTED	REGISTERED	TURNOUT	VOTED	REGISTERED	TURNOUT
CITY									
Leg. Dist. 06	13	26	50.00 %	6	9	66.67 %	8	13	61.54 %
Leg. Dist. 07	4	14	28.57 %	3	10	30.00 %	3	6	50.00 %
Leg. Dist. 21	37	73	50.68 %	17	35	48.57 %	17	29	58.62 %
Leg. Dist. 22	6	33	18.18 %	3	12	25.00 %	3	3	100.00 %
Leg. Dist. 23	38	70	54.29 %	23	42	54.76 %	14	22	63.64 %
Leg. Dist. 24	26	40	65.00 %	11	20	55.00 %	9	15	60.00 %
Leg. Dist. 25	24	43	55.81 %	9	20	45.00 %	5	9	55.56 %
Leg. Dist. 26	24	43	55.81 %	15	19	78.95 %	1	4	25.00 %
Leg. Dist. 27	23	53	43.40 %	19	34	55.88 %	5	11	45.45 %
Leg. Dist. 28	19	57	33.33 %	16	27	59.26 %	9	10	90.00 %
Leg. Dist. 29	14	38	36.84 %	16	36	44.44 %	11	18	61.11 %
TOTAL:	228	490	46.53 %	138	264	52.27 %	85	140	60.71 %
TOWNS									
Brighton	73	118	61.86 %	48	70	68.57 %	61	77	79.22 %
Chili	45	80	56.25 %	34	58	58.62 %	32	41	78.05 %
Clarkson	16	39	41.03 %	4	9	44.44 %	8	11	72.73 %
East Rochester	13	25	52.00 %	10	18	55.56 %	6	10	60.00 %
Gates	42	93	45.16 %	33	55	60.00 %	35	57	61.40 %
Greece	202	386	52.33 %	115	194	59.28 %	114	177	64.41 %
Hamlin	21	40	52.50 %	19	26	73.08 %	8	10	80.00 %
Henrietta	59	110	53.64 %	48	72	66.67 %	36	52	69.23 %
Irondequoit	116	210	55.24 %	73	115	63.48 %	73	107	68.22 %
Mendon	41	61	67.21 %	11	19	57.89 %	8	14	57.14 %
Ogden	36	75	48.00 %	20	35	57.14 %	19	22	86.36 %
Parma	33	71	46.48 %	28	39	71.79 %	17	21	80.95 %
Penfield	111	188	59.04 %	57	84	67.86 %	71	105	67.62 %
Perinton	122	192	63.54 %	75	111	67.57 %	91	109	83.49 %
Pittsford	75	102	73.53 %	41	62	66.13 %	53	65	81.54 %
Riga	16	30	53.33 %	9	14	64.29 %	11	13	84.62 %
Rush	4	13	30.77 %	9	11	81.82 %	2	2	100.00 %
Sweden	25	42	59.52 %	13	22	59.09 %	19	22	86.36 %
Webster	99	201	49.25 %	69	104	66.35 %	76	98	77.55 %
Wheatland	8	22	36.36 %	4	11	36.36 %	6	6	100.00 %
TOTAL:	1,157	2,098	55.15 %	720	1,129	63.77 %	746	1,019	73.21 %
GRAND TOTAL:	1,385	2,588	53.52 %	858	1,393	61.59 %	831	1,159	71.70 %

INDEPENDENCE TURNOUT - TOTAL AND GENDER 2006 GENERAL ELECTION



INDEPENDENCE TURNOUT BY AGE GROUP 2006 GENERAL ELECTION



CONSERVATIVE SUMMARY

2006 GENERAL ELECTION
CONSERVATIVE TURNOUT BY GENDER

LT/LD SUMMARY

LEGISLATIVE DISTRICT OR TOWN	TOTAL VOTERS			MALES			FEMALES		
	VOTED	REGISTERED	TURNOUT	VOTED	REGISTERED	TURNOUT	VOTED	REGISTERED	TURNOUT
CITY									
Leg. Dist. 06	51	86	59.30 %	25	48	52.08 %	26	38	68.42 %
Leg. Dist. 07	22	24	91.67 %	15	15	100.00 %	7	9	77.78 %
Leg. Dist. 21	57	104	54.81 %	36	65	55.38 %	21	39	53.85 %
Leg. Dist. 22	14	45	31.11 %	11	27	40.74 %	3	18	16.67 %
Leg. Dist. 23	61	100	61.00 %	38	55	69.09 %	23	45	51.11 %
Leg. Dist. 24	35	63	55.56 %	21	37	56.76 %	14	26	53.85 %
Leg. Dist. 25	22	51	43.14 %	12	31	38.71 %	10	20	50.00 %
Leg. Dist. 26	61	124	49.19 %	36	69	52.17 %	25	55	45.45 %
Leg. Dist. 27	35	75	46.67 %	18	47	38.30 %	17	28	60.71 %
Leg. Dist. 28	68	137	49.64 %	42	76	55.26 %	26	61	42.62 %
Leg. Dist. 29	50	112	44.64 %	35	71	49.30 %	15	41	36.59 %
TOTAL:	476	921	51.68 %	289	541	53.42 %	187	380	49.21 %
TOWNS									
Brighton	132	208	63.46 %	82	125	65.60 %	50	83	60.24 %
Chili	290	449	64.59 %	173	261	66.28 %	117	188	62.23 %
Clarkson	60	108	55.56 %	43	68	63.24 %	17	40	42.50 %
East Rochester	47	87	54.02 %	29	49	59.18 %	18	38	47.37 %
Gates	240	400	60.00 %	145	217	66.82 %	95	183	51.91 %
Greece	902	1,542	58.50 %	495	825	60.00 %	407	717	56.76 %
Hamlin	72	129	55.81 %	44	71	61.97 %	28	58	48.28 %
Henrietta	245	466	52.58 %	140	253	55.34 %	105	213	49.30 %
Irondequoit	408	690	59.13 %	243	384	63.28 %	165	306	53.92 %
Mendon	66	97	68.04 %	37	56	66.07 %	29	41	70.73 %
Ogden	218	353	61.76 %	119	179	66.48 %	99	174	56.90 %
Parma	155	252	61.51 %	96	142	67.61 %	59	110	53.64 %
Penfield	262	411	63.75 %	161	243	66.26 %	101	168	60.12 %
Perinton	285	461	61.82 %	181	286	63.29 %	104	175	59.43 %
Pittsford	135	190	71.05 %	87	120	72.50 %	48	70	68.57 %
Riga	57	79	72.15 %	37	50	74.00 %	20	29	68.97 %
Rush	34	49	69.39 %	21	27	77.78 %	13	22	59.09 %
Sweden	76	130	58.46 %	43	73	58.90 %	33	57	57.89 %
Webster	322	540	59.63 %	198	313	63.26 %	124	227	54.63 %
Wheatland	47	78	60.26 %	28	48	58.33 %	19	30	63.33 %
TOTAL:	4,053	6,719	60.32 %	2,402	3,790	63.38 %	1,651	2,929	56.37 %
GRAND TOTAL:	4,529	7,640	59.28 %	2,691	4,331	62.13 %	1,838	3,309	55.55 %

2006 GENERAL ELECTION
CONSERVATIVE TURNOUT BY AGE

LT/LD SUMMARY
Part 1 of 2

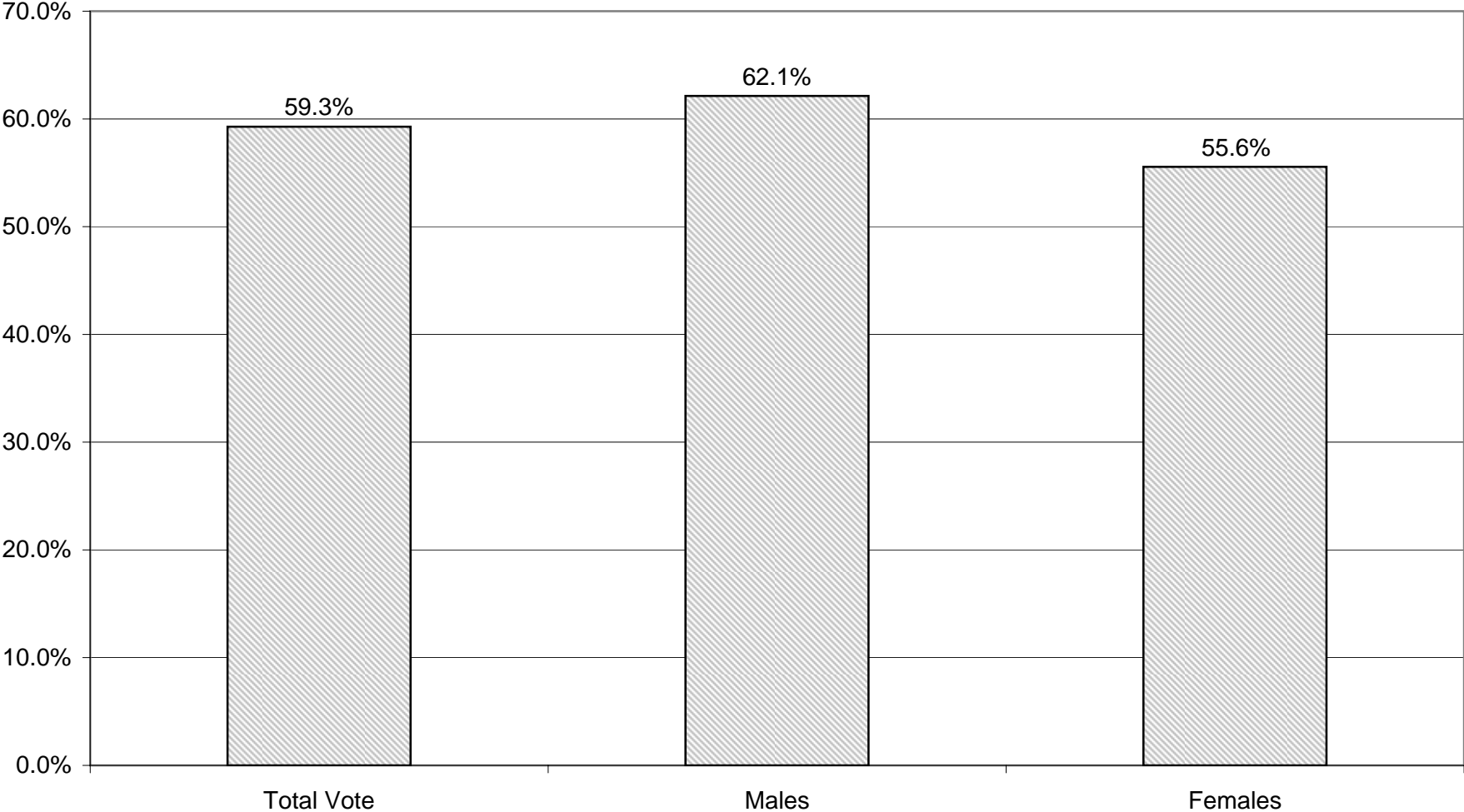
LEGISLATIVE DISTRICT OR TOWN CITY	NDOB			18-24			25-34			35-44		
	VOTED	REGISTERED	TURNOUT	VOTED	REGISTERED	TURNOUT	VOTED	REGISTERED	TURNOUT	VOTED	REGISTERED	TURNOUT
Leg. Dist. 06	0	1	0.00 %	0	1	0.00 %	1	5	20.00 %	10	26	38.46 %
Leg. Dist. 07	0	0	0.00 %	1	1	100.00 %	0	0	0.00 %	4	3	133.33 %
Leg. Dist. 21	3	3	100.00 %	2	4	50.00 %	3	11	27.27 %	7	21	33.33 %
Leg. Dist. 22	0	0	0.00 %	0	0	0.00 %	1	8	12.50 %	1	9	11.11 %
Leg. Dist. 23	1	1	100.00 %	0	3	0.00 %	5	14	35.71 %	12	20	60.00 %
Leg. Dist. 24	2	2	100.00 %	0	1	0.00 %	6	11	54.55 %	5	13	38.46 %
Leg. Dist. 25	2	2	100.00 %	0	1	0.00 %	2	9	22.22 %	1	7	14.29 %
Leg. Dist. 26	1	1	100.00 %	1	6	16.67 %	2	15	13.33 %	7	20	35.00 %
Leg. Dist. 27	1	1	100.00 %	1	3	33.33 %	2	11	18.18 %	6	14	42.86 %
Leg. Dist. 28	0	0	0.00 %	1	1	100.00 %	4	11	36.36 %	5	20	25.00 %
Leg. Dist. 29	0	0	0.00 %	1	5	20.00 %	4	17	23.53 %	9	22	40.91 %
TOTAL:	10	11	90.91 %	7	26	26.92 %	30	112	26.79 %	67	175	38.29 %
TOWNS												
Brighton	4	5	80.00 %	5	11	45.45 %	7	22	31.82 %	17	34	50.00 %
Chili	3	3	100.00 %	5	22	22.73 %	25	42	59.52 %	45	86	52.33 %
Clarkson	0	0	0.00 %	2	3	66.67 %	3	11	27.27 %	17	35	48.57 %
East Rochester	0	1	0.00 %	0	6	0.00 %	5	12	41.67 %	10	19	52.63 %
Gates	2	2	100.00 %	6	13	46.15 %	14	34	41.18 %	46	91	50.55 %
Greece	9	15	60.00 %	25	71	35.21 %	56	161	34.78 %	116	253	45.85 %
Hamlin	0	0	0.00 %	1	1	100.00 %	2	13	15.38 %	14	29	48.28 %
Henrietta	1	3	33.33 %	3	17	17.65 %	11	41	26.83 %	34	84	40.48 %
Irondequoit	9	9	100.00 %	8	19	42.11 %	18	66	27.27 %	58	117	49.57 %
Mendon	0	0	0.00 %	0	2	0.00 %	3	10	30.00 %	14	20	70.00 %
Ogden	1	2	50.00 %	12	25	48.00 %	8	28	28.57 %	37	69	53.62 %
Parma	0	0	0.00 %	4	8	50.00 %	7	24	29.17 %	24	53	45.28 %
Penfield	2	3	66.67 %	4	22	18.18 %	11	30	36.67 %	42	67	62.69 %
Perinton	0	1	0.00 %	1	10	10.00 %	9	41	21.95 %	30	60	50.00 %
Pittsford	3	3	100.00 %	1	2	50.00 %	2	7	28.57 %	26	37	70.27 %
Riga	0	0	0.00 %	1	3	33.33 %	5	7	71.43 %	12	15	80.00 %
Rush	0	0	0.00 %	0	0	0.00 %	1	2	50.00 %	5	9	55.56 %
Sweden	0	0	0.00 %	1	6	16.67 %	8	18	44.44 %	10	27	37.04 %
Webster	3	4	75.00 %	10	22	45.45 %	11	48	22.92 %	44	95	46.32 %
Wheatland	0	0	0.00 %	1	1	100.00 %	3	5	60.00 %	8	20	40.00 %
TOTAL:	37	51	72.55 %	90	264	34.09 %	209	622	33.60 %	609	1,220	49.92 %
GRAND TOTAL:	47	62	75.81 %	97	290	33.45 %	239	734	32.56 %	676	1,395	48.46 %

2006 GENERAL ELECTION
CONSERVATIVE TURNOUT BY AGE

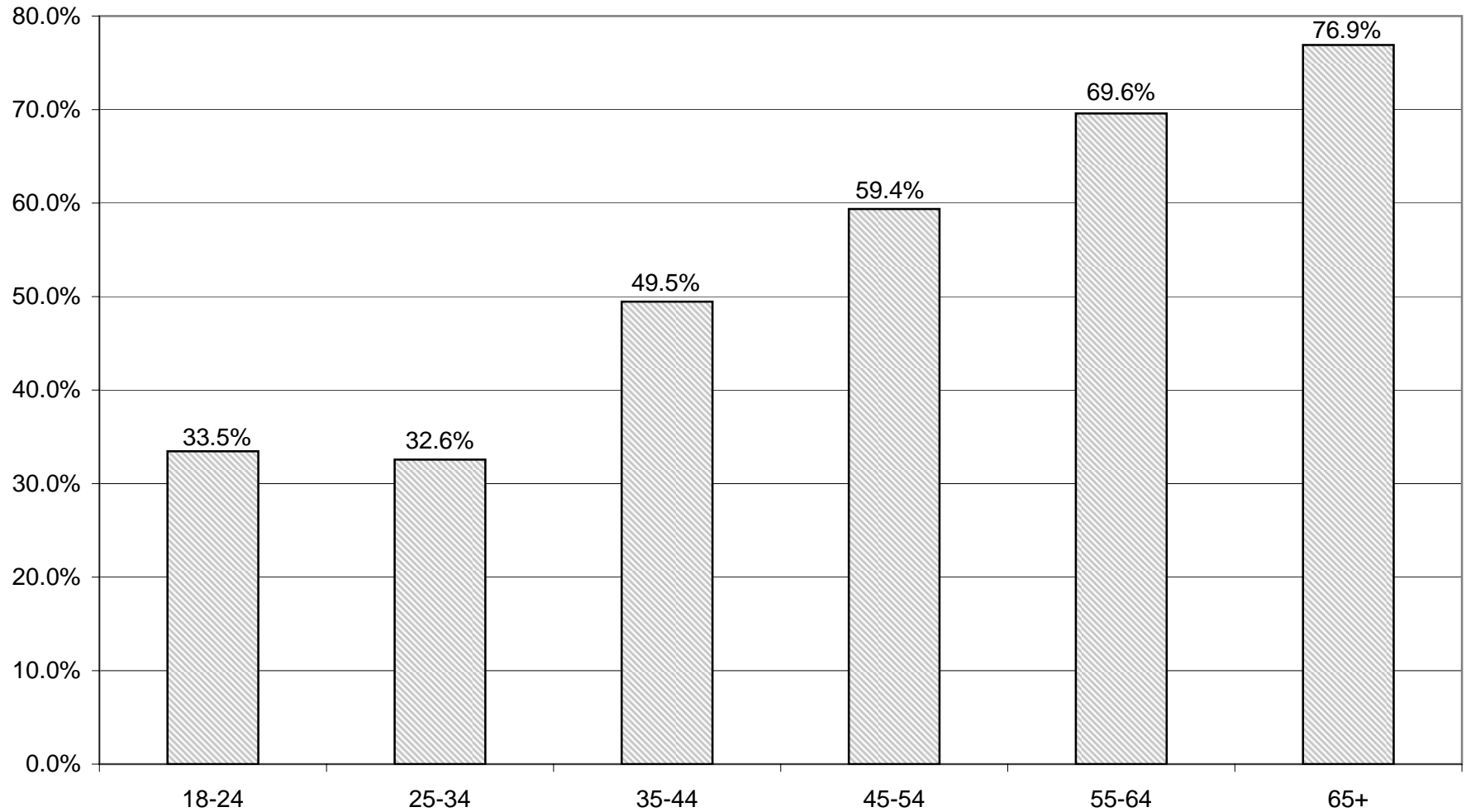
LT/LD SUMMARY
Part 2 of 2

LEGISLATIVE DISTRICT OR TOWN CITY	45-54			55-64			65+		
	VOTED	REGISTERED	TURNOUT	VOTED	REGISTERED	TURNOUT	VOTED	REGISTERED	TURNOUT
Leg. Dist. 06	10	18	55.56 %	20	20	100.00 %	9	15	60.00 %
Leg. Dist. 07	3	5	60.00 %	12	13	92.31 %	2	2	100.00 %
Leg. Dist. 21	19	30	63.33 %	15	27	55.56 %	8	8	100.00 %
Leg. Dist. 22	6	15	40.00 %	3	7	42.86 %	3	6	50.00 %
Leg. Dist. 23	11	19	57.89 %	19	27	70.37 %	13	16	81.25 %
Leg. Dist. 24	6	12	50.00 %	9	15	60.00 %	7	9	77.78 %
Leg. Dist. 25	7	15	46.67 %	3	7	42.86 %	7	10	70.00 %
Leg. Dist. 26	21	42	50.00 %	16	23	69.57 %	13	17	76.47 %
Leg. Dist. 27	12	19	63.16 %	7	18	38.89 %	6	9	66.67 %
Leg. Dist. 28	25	47	53.19 %	15	35	42.86 %	18	23	78.26 %
Leg. Dist. 29	14	26	53.85 %	15	27	55.56 %	7	15	46.67 %
TOTAL:	134	248	54.03 %	135	219	61.64 %	93	130	71.54 %
TOWNS									
Brighton	30	43	69.77 %	34	47	72.34 %	35	46	76.09 %
Chili	70	115	60.87 %	67	89	75.28 %	75	92	81.52 %
Clarkson	20	34	58.82 %	11	16	68.75 %	7	9	77.78 %
East Rochester	14	24	58.33 %	14	20	70.00 %	4	5	80.00 %
Gates	67	106	63.21 %	62	94	65.96 %	43	60	71.67 %
Greece	263	458	57.42 %	238	339	70.21 %	195	245	79.59 %
Hamlin	27	45	60.00 %	19	28	67.86 %	9	13	69.23 %
Henrietta	58	125	46.40 %	69	105	65.71 %	69	91	75.82 %
Irondequoit	106	175	60.57 %	115	166	69.28 %	94	138	68.12 %
Mendon	20	29	68.97 %	13	18	72.22 %	16	18	88.89 %
Ogden	66	113	58.41 %	49	66	74.24 %	45	50	90.00 %
Parma	49	76	64.47 %	44	56	78.57 %	27	35	77.14 %
Penfield	74	110	67.27 %	71	106	66.98 %	58	73	79.45 %
Perinton	67	107	62.62 %	81	119	68.07 %	97	123	78.86 %
Pittsford	25	32	78.13 %	38	55	69.09 %	40	54	74.07 %
Riga	16	24	66.67 %	13	17	76.47 %	10	13	76.92 %
Rush	11	17	64.71 %	9	11	81.82 %	8	10	80.00 %
Sweden	30	46	65.22 %	18	23	78.26 %	9	10	90.00 %
Webster	92	163	56.44 %	94	122	77.05 %	68	86	79.07 %
Wheatland	16	24	66.67 %	12	17	70.59 %	7	11	63.64 %
TOTAL:	1,121	1,866	60.08 %	1,071	1,514	70.74 %	916	1,182	77.50 %
GRAND TOTAL:	1,255	2,114	59.37 %	1,206	1,733	69.59 %	1,009	1,312	76.91 %

CONSERVATIVE TURNOUT - TOTAL AND GENDER 2006 GENERAL ELECTION



CONSERVATIVE TURNOUT BY AGE GROUP 2006 GENERAL ELECTION



WORKING FAMILIES SUMMARY

2006 GENERAL ELECTION
WORKING FAMILIES TURNOUT BY GENDER

LT/LD SUMMARY

LEGISLATIVE DISTRICT OR TOWN CITY	TOTAL VOTERS			MALES			FEMALES		
	VOTED	REGISTERED	TURNOUT	VOTED	REGISTERED	TURNOUT	VOTED	REGISTERED	TURNOUT
Leg. Dist. 06	1	8	12.50 %	0	3	0.00 %	1	5	20.00 %
Leg. Dist. 07	1	3	33.33 %	0	1	0.00 %	1	2	50.00 %
Leg. Dist. 21	8	48	16.67 %	3	20	15.00 %	5	28	17.86 %
Leg. Dist. 22	4	62	6.45 %	3	22	13.64 %	1	40	2.50 %
Leg. Dist. 23	11	32	34.38 %	7	14	50.00 %	4	18	22.22 %
Leg. Dist. 24	19	27	70.37 %	8	13	61.54 %	11	14	78.57 %
Leg. Dist. 25	8	45	17.78 %	4	17	23.53 %	4	28	14.29 %
Leg. Dist. 26	12	27	44.44 %	5	9	55.56 %	7	18	38.89 %
Leg. Dist. 27	10	64	15.63 %	2	20	10.00 %	8	44	18.18 %
Leg. Dist. 28	9	63	14.29 %	4	22	18.18 %	5	41	12.20 %
Leg. Dist. 29	3	51	5.88 %	2	16	12.50 %	1	35	2.86 %
TOTAL:	86	430	20.00 %	38	157	24.20 %	48	273	17.58 %
TOWNS									
Brighton	13	27	48.15 %	5	12	41.67 %	8	15	53.33 %
Chili	12	28	42.86 %	8	16	50.00 %	4	12	33.33 %
Clarkson	3	12	25.00 %	2	5	40.00 %	1	7	14.29 %
East Rochester	3	16	18.75 %	1	7	14.29 %	2	9	22.22 %
Gates	17	48	35.42 %	9	19	47.37 %	8	29	27.59 %
Greece	39	142	27.46 %	17	48	35.42 %	22	94	23.40 %
Hamlin	1	11	9.09 %	1	4	25.00 %	0	7	0.00 %
Henrietta	12	27	44.44 %	7	15	46.67 %	5	12	41.67 %
Irondequoit	14	49	28.57 %	7	23	30.43 %	7	26	26.92 %
Mendon	2	5	40.00 %	1	4	25.00 %	1	1	100.00 %
Ogden	8	23	34.78 %	4	13	30.77 %	4	10	40.00 %
Parma	14	32	43.75 %	9	21	42.86 %	5	11	45.45 %
Penfield	5	31	16.13 %	2	13	15.38 %	3	18	16.67 %
Perinton	6	23	26.09 %	4	12	33.33 %	2	11	18.18 %
Pittsford	6	13	46.15 %	3	4	75.00 %	3	9	33.33 %
Riga	4	9	44.44 %	1	5	20.00 %	3	4	75.00 %
Rush	2	5	40.00 %	2	5	40.00 %	0	0	0.00 %
Sweden	5	15	33.33 %	2	7	28.57 %	3	8	37.50 %
Webster	17	34	50.00 %	12	19	63.16 %	5	15	33.33 %
Wheatland	1	7	14.29 %	1	5	20.00 %	0	2	0.00 %
TOTAL:	184	557	33.03 %	98	257	38.13 %	86	300	28.67 %
GRAND TOTAL:	270	987	27.36 %	136	414	32.85 %	134	573	23.39 %

2006 GENERAL ELECTION
WORKING FAMILIES TURNOUT BY AGE

LT/LD SUMMARY
Part 1 of 2

LEGISLATIVE DISTRICT OR TOWN CITY	NDOB			18-24			25-34			35-44		
	VOTED	REGISTERED	TURNOUT	VOTED	REGISTERED	TURNOUT	VOTED	REGISTERED	TURNOUT	VOTED	REGISTERED	TURNOUT
Leg. Dist. 06	0	0	0.00 %	0	0	0.00 %	0	4	0.00 %	0	2	0.00 %
Leg. Dist. 07	0	0	0.00 %	0	1	0.00 %	0	1	0.00 %	0	1	0.00 %
Leg. Dist. 21	0	0	0.00 %	0	8	0.00 %	3	18	16.67 %	2	12	16.67 %
Leg. Dist. 22	0	0	0.00 %	1	14	7.14 %	0	26	0.00 %	0	10	0.00 %
Leg. Dist. 23	0	0	0.00 %	0	1	0.00 %	1	9	11.11 %	4	10	40.00 %
Leg. Dist. 24	0	0	0.00 %	2	2	100.00 %	5	7	71.43 %	4	10	40.00 %
Leg. Dist. 25	0	0	0.00 %	1	6	16.67 %	1	14	7.14 %	3	14	21.43 %
Leg. Dist. 26	0	0	0.00 %	0	1	0.00 %	3	6	50.00 %	5	14	35.71 %
Leg. Dist. 27	0	0	0.00 %	0	12	0.00 %	2	19	10.53 %	2	16	12.50 %
Leg. Dist. 28	0	0	0.00 %	0	3	0.00 %	1	24	4.17 %	3	20	15.00 %
Leg. Dist. 29	0	0	0.00 %	0	8	0.00 %	0	12	0.00 %	0	25	0.00 %
TOTAL:	0	0	0.00 %	4	56	7.14 %	16	140	11.43 %	23	134	17.16 %
TOWNS												
Brighton	0	0	0.00 %	0	1	0.00 %	6	13	46.15 %	3	7	42.86 %
Chili	0	0	0.00 %	0	2	0.00 %	1	2	50.00 %	2	5	40.00 %
Clarkson	0	0	0.00 %	1	2	50.00 %	0	4	0.00 %	0	1	0.00 %
East Rochester	0	0	0.00 %	0	2	0.00 %	0	4	0.00 %	2	6	33.33 %
Gates	0	0	0.00 %	0	4	0.00 %	2	14	14.29 %	4	16	25.00 %
Greece	0	0	0.00 %	2	17	11.76 %	8	27	29.63 %	14	56	25.00 %
Hamlin	0	0	0.00 %	1	4	25.00 %	0	1	0.00 %	0	3	0.00 %
Henrietta	0	0	0.00 %	0	0	0.00 %	1	2	50.00 %	2	6	33.33 %
Irondequoit	0	0	0.00 %	1	8	12.50 %	1	9	11.11 %	3	17	17.65 %
Mendon	0	0	0.00 %	0	2	0.00 %	0	1	0.00 %	1	1	100.00 %
Ogden	0	0	0.00 %	0	2	0.00 %	3	7	42.86 %	3	8	37.50 %
Parma	0	0	0.00 %	0	2	0.00 %	2	9	22.22 %	4	6	66.67 %
Penfield	0	0	0.00 %	0	1	0.00 %	1	7	14.29 %	2	7	28.57 %
Perinton	0	0	0.00 %	1	5	20.00 %	1	6	16.67 %	3	6	50.00 %
Pittsford	0	0	0.00 %	2	4	50.00 %	0	0	0.00 %	2	3	66.67 %
Riga	0	0	0.00 %	0	0	0.00 %	2	5	40.00 %	0	2	0.00 %
Rush	0	0	0.00 %	0	0	0.00 %	0	1	0.00 %	0	1	0.00 %
Sweden	0	0	0.00 %	1	2	50.00 %	2	4	50.00 %	0	5	0.00 %
Webster	0	0	0.00 %	0	2	0.00 %	3	9	33.33 %	6	8	75.00 %
Wheatland	0	0	0.00 %	0	1	0.00 %	0	1	0.00 %	0	3	0.00 %
TOTAL:	0	0	0.00 %	9	61	14.75 %	33	126	26.19 %	51	167	30.54 %
GRAND TOTAL:	0	0	0.00 %	13	117	11.11 %	49	266	18.42 %	74	301	24.58 %

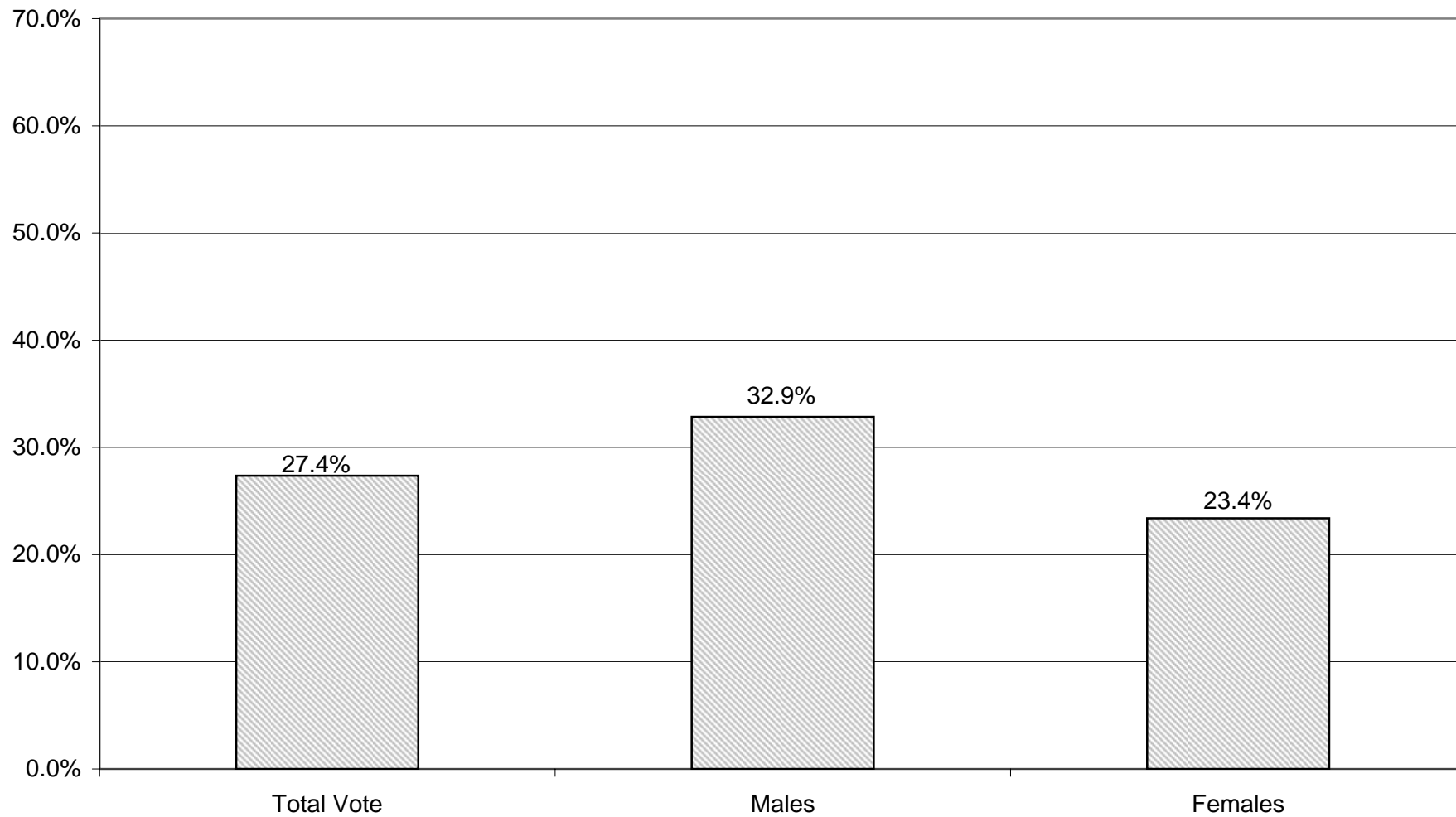
2006 GENERAL ELECTION
WORKING FAMILIES TURNOUT BY AGE

LT/LD SUMMARY

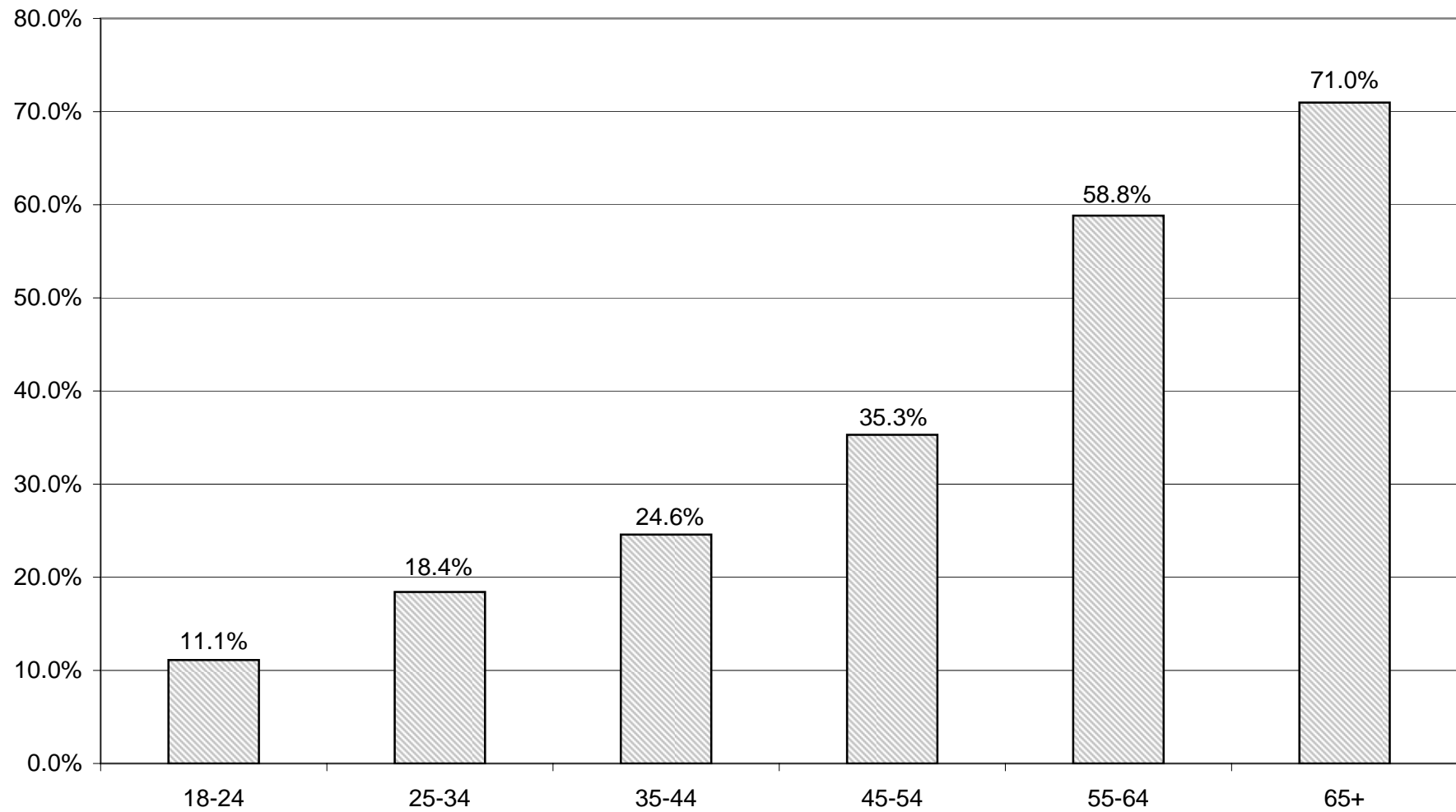
Part 2 of 2

LEGISLATIVE DISTRICT OR TOWN	45-54			55-64			65+		
	VOTED	REGISTERED	TURNOUT	VOTED	REGISTERED	TURNOUT	VOTED	REGISTERED	TURNOUT
CITY									
Leg. Dist. 06	1	2	50.00 %	0	0	0.00 %	0	0	0.00 %
Leg. Dist. 07	0	0	0.00 %	0	0	0.00 %	0	0	0.00 %
Leg. Dist. 21	3	10	30.00 %	0	0	0.00 %	0	0	0.00 %
Leg. Dist. 22	2	10	20.00 %	1	2	50.00 %	0	0	0.00 %
Leg. Dist. 23	3	8	37.50 %	0	1	0.00 %	3	3	100.00 %
Leg. Dist. 24	3	3	100.00 %	4	5	80.00 %	1	0	0.00 %
Leg. Dist. 25	1	7	14.29 %	2	3	66.67 %	0	1	0.00 %
Leg. Dist. 26	1	2	50.00 %	1	2	50.00 %	2	2	100.00 %
Leg. Dist. 27	2	12	16.67 %	2	3	66.67 %	2	2	100.00 %
Leg. Dist. 28	4	12	33.33 %	0	1	0.00 %	1	3	33.33 %
Leg. Dist. 29	2	5	40.00 %	1	1	100.00 %	0	0	0.00 %
TOTAL:	23	71	32.39 %	2	18	61.11 %	9	11	81.82 %
TOWNS									
Brighton	1	1	100.00 %	2	4	50.00 %	1	1	100.00 %
Chili	4	13	30.77 %	4	5	80.00 %	1	1	100.00 %
Clarkson	2	5	40.00 %	0	0	0.00 %	0	0	0.00 %
East Rochester	0	2	0.00 %	0	1	0.00 %	1	1	100.00 %
Gates	3	6	50.00 %	5	5	100.00 %	3	3	100.00 %
Greece	12	34	35.29 %	1	6	16.67 %	2	2	100.00 %
Hamlin	0	2	0.00 %	0	1	0.00 %	0	0	0.00 %
Henrietta	7	15	46.67 %	1	3	33.33 %	1	1	100.00 %
Irondequoit	2	7	28.57 %	5	6	83.33 %	1	2	50.00 %
Mendon	1	1	100.00 %	0	0	0.00 %	1	0	0.00 %
Ogden	2	5	40.00 %	0	1	0.00 %	0	0	0.00 %
Parma	5	10	50.00 %	2	2	100.00 %	1	3	33.33 %
Penfield	0	6	0.00 %	2	7	28.57 %	0	3	0.00 %
Perinton	1	4	25.00 %	0	2	0.00 %	0	0	0.00 %
Pittsford	1	4	25.00 %	1	1	100.00 %	0	1	0.00 %
Riga	1	1	100.00 %	1	1	100.00 %	0	0	0.00 %
Rush	1	2	50.00 %	1	1	100.00 %	0	0	0.00 %
Sweden	2	4	50.00 %	0	0	0.00 %	0	0	0.00 %
Webster	3	9	33.33 %	4	4	100.00 %	1	2	50.00 %
Wheatland	1	2	50.00 %	0	0	0.00 %	0	0	0.00 %
TOTAL:	49	133	36.84 %	3	50	58.00 %	13	20	65.00 %
GRAND TOTAL:	72	204	35.29 %	40	68	58.82 %	22	31	70.97 %

WORKING FAMILIES TURNOUT - TOTAL AND GENDER 2006 GENERAL ELECTION



WORKING FAMILIES TURNOUT BY AGE GROUP 2006 GENERAL ELECTION



BLANKS SUMMARY

2006 GENERAL ELECTION
BLANK TURNOUT BY GENDER

LT/LD SUMMARY

LEGISLATIVE DISTRICT OR TOWN	TOTAL VOTERS			MALES			FEMALES		
	VOTED	REGISTERED	TURNOUT	VOTED	REGISTERED	TURNOUT	VOTED	REGISTERED	TURNOUT
CITY									
Leg. Dist. 06	329	737	44.64 %	161	336	47.92 %	168	401	41.90 %
Leg. Dist. 07	154	336	45.83 %	75	157	47.77 %	79	179	44.13 %
Leg. Dist. 21	1,016	2,551	39.83 %	541	1,264	42.80 %	475	1,287	36.91 %
Leg. Dist. 22	170	1,383	12.29 %	89	603	14.76 %	81	780	10.38 %
Leg. Dist. 23	1,463	2,913	50.22 %	847	1,549	54.68 %	616	1,364	45.16 %
Leg. Dist. 24	846	1,668	50.72 %	452	874	51.72 %	394	794	49.62 %
Leg. Dist. 25	488	1,551	31.46 %	276	824	33.50 %	212	727	29.16 %
Leg. Dist. 26	497	1,517	32.76 %	263	716	36.73 %	234	801	29.21 %
Leg. Dist. 27	613	1,912	32.06 %	289	925	31.24 %	324	987	32.83 %
Leg. Dist. 28	482	1,917	25.14 %	254	847	29.99 %	228	1,070	21.31 %
Leg. Dist. 29	482	1,924	25.05 %	229	851	26.91 %	253	1,073	23.58 %
TOTAL:	6,540	18,409	35.53 %	3,476	8,946	38.86 %	3,064	9,463	32.38 %
TOWNS									
Brighton	2,980	5,197	57.34 %	1,525	2,549	59.83 %	1,455	2,648	54.95 %
Chili	2,047	4,478	45.71 %	1,036	2,168	47.79 %	1,011	2,310	43.77 %
Clarkson	359	822	43.67 %	184	407	45.21 %	175	415	42.17 %
East Rochester	439	984	44.61 %	204	447	45.64 %	235	537	43.76 %
Gates	1,679	4,277	39.26 %	870	2,048	42.48 %	809	2,229	36.29 %
Greece	6,707	15,227	44.05 %	3,400	7,251	46.89 %	3,307	7,976	41.46 %
Hamlin	475	1,255	37.85 %	254	613	41.44 %	221	642	34.42 %
Henrietta	2,275	4,924	46.20 %	1,166	2,480	47.02 %	1,109	2,444	45.38 %
Irondequoit	4,314	8,506	50.72 %	2,186	4,045	54.04 %	2,128	4,461	47.70 %
Mendon	841	1,442	58.32 %	433	699	61.95 %	408	743	54.91 %
Ogden	1,408	3,125	45.06 %	743	1,523	48.79 %	665	1,602	41.51 %
Parma	1,218	2,755	44.21 %	614	1,324	46.37 %	604	1,431	42.21 %
Penfield	3,257	6,270	51.95 %	1,675	3,003	55.78 %	1,582	3,267	48.42 %
Perinton	4,454	8,088	55.07 %	2,290	3,983	57.49 %	2,164	4,105	52.72 %
Pittsford	2,641	4,607	57.33 %	1,331	2,209	60.25 %	1,310	2,398	54.63 %
Riga	452	872	51.83 %	238	443	53.72 %	214	429	49.88 %
Rush	346	632	54.75 %	167	307	54.40 %	179	325	55.08 %
Sweden	713	1,538	46.36 %	359	749	47.93 %	354	789	44.87 %
Webster	3,648	7,264	50.22 %	1,860	3,465	53.68 %	1,788	3,799	47.07 %
Wheatland	376	770	48.83 %	188	382	49.21 %	188	388	48.45 %
TOTAL:	40,629	83,033	48.93 %	20,723	40,095	51.68 %	19,906	42,938	46.36 %
GRAND TOTAL:	47,169	101,442	46.50 %	24,199	49,041	49.34 %	22,970	52,401	43.84 %

2006 GENERAL ELECTION
BLANK TURNOUT BY AGE

LT/LD SUMMARY
Part 1 of 2

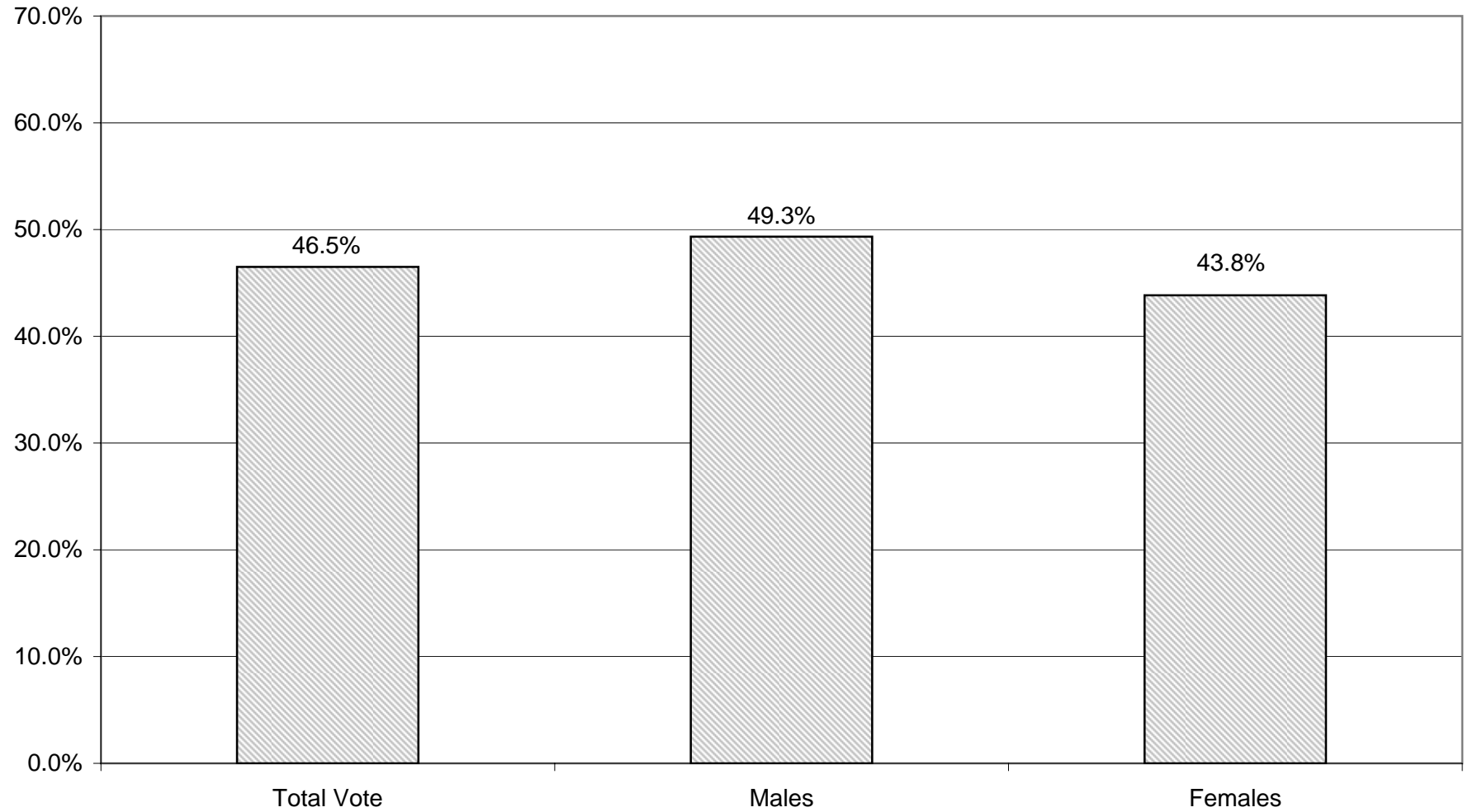
LEGISLATIVE DISTRICT OR TOWN CITY	NDOB			18-24			25-34			35-44		
	VOTED	REGISTERED	TURNOUT	VOTED	REGISTERED	TURNOUT	VOTED	REGISTERED	TURNOUT	VOTED	REGISTERED	TURNOUT
Leg. Dist. 06	4	4	100.00 %	6	44	13.64 %	34	173	19.65 %	52	118	44.07 %
Leg. Dist. 07	0	0	0.00 %	6	25	24.00 %	13	53	24.53 %	23	64	35.94 %
Leg. Dist. 21	9	11	81.82 %	43	209	20.57 %	197	710	27.75 %	199	578	34.43 %
Leg. Dist. 22	3	6	50.00 %	14	196	7.14 %	21	400	5.25 %	32	315	10.16 %
Leg. Dist. 23	14	20	70.00 %	57	199	28.64 %	323	959	33.68 %	304	618	49.19 %
Leg. Dist. 24	7	8	87.50 %	26	106	24.53 %	178	484	36.78 %	178	340	52.35 %
Leg. Dist. 25	2	5	40.00 %	31	284	10.92 %	95	393	24.17 %	82	280	29.29 %
Leg. Dist. 26	3	5	60.00 %	21	158	13.29 %	52	413	12.59 %	83	311	26.69 %
Leg. Dist. 27	10	14	71.43 %	40	191	20.94 %	87	501	17.37 %	85	422	20.14 %
Leg. Dist. 28	11	14	78.57 %	21	258	8.14 %	53	439	12.07 %	72	431	16.71 %
Leg. Dist. 29	5	12	41.67 %	18	202	8.91 %	44	438	10.05 %	74	404	18.32 %
TOTAL:	68	99	68.69 %	283	1,872	15.12 %	1,097	4,963	22.10 %	1,184	3,881	30.51 %
TOWNS												
Brighton	33	45	73.33 %	73	401	18.20 %	294	910	32.31 %	464	883	52.55 %
Chili	15	22	68.18 %	79	495	15.96 %	181	854	21.19 %	312	809	38.57 %
Clarkson	0	0	0.00 %	19	89	21.35 %	19	122	15.57 %	73	192	38.02 %
East Rochester	9	12	75.00 %	15	105	14.29 %	52	211	24.64 %	73	168	43.45 %
Gates	6	10	60.00 %	56	419	13.37 %	173	893	19.37 %	256	810	31.60 %
Greece	66	88	75.00 %	221	1,541	14.34 %	561	2,763	20.30 %	906	2,607	34.75 %
Hamlin	1	1	100.00 %	24	144	16.67 %	27	213	12.68 %	85	268	31.72 %
Henrietta	8	14	57.14 %	79	392	20.15 %	268	993	26.99 %	361	978	36.91 %
Irondequoit	62	85	72.94 %	134	700	19.14 %	400	1,465	27.30 %	623	1,466	42.50 %
Mendon	4	4	100.00 %	22	145	15.17 %	50	141	35.46 %	139	279	49.82 %
Ogden	12	16	75.00 %	51	292	17.47 %	97	543	17.86 %	237	617	38.41 %
Parma	4	5	80.00 %	62	401	15.46 %	68	430	15.81 %	208	516	40.31 %
Penfield	24	38	63.16 %	81	510	15.88 %	220	904	24.34 %	497	1,110	44.77 %
Perinton	14	17	82.35 %	121	744	16.26 %	301	1,169	25.75 %	691	1,449	47.69 %
Pittsford	15	18	83.33 %	69	399	17.29 %	138	570	24.21 %	356	743	47.91 %
Riga	1	1	100.00 %	15	77	19.48 %	39	137	28.47 %	76	185	41.08 %
Rush	1	1	100.00 %	10	45	22.22 %	18	75	24.00 %	43	101	42.57 %
Sweden	0	2	0.00 %	23	159	14.47 %	65	295	22.03 %	118	283	41.70 %
Webster	38	47	80.85 %	82	562	14.59 %	263	1,061	24.79 %	596	1,424	41.85 %
Wheatland	3	3	100.00 %	17	89	19.10 %	30	133	22.56 %	61	139	43.88 %
TOTAL:	316	429	73.66 %	1,253	7,709	16.25 %	3,264	13,882	23.51 %	6,175	15,027	41.09 %
GRAND TOTAL:	384	528	72.73 %	1,536	9,581	16.03 %	4,361	18,845	23.14 %	7,359	18,908	38.92 %

2006 GENERAL ELECTION
BLANK TURNOUT BY AGE

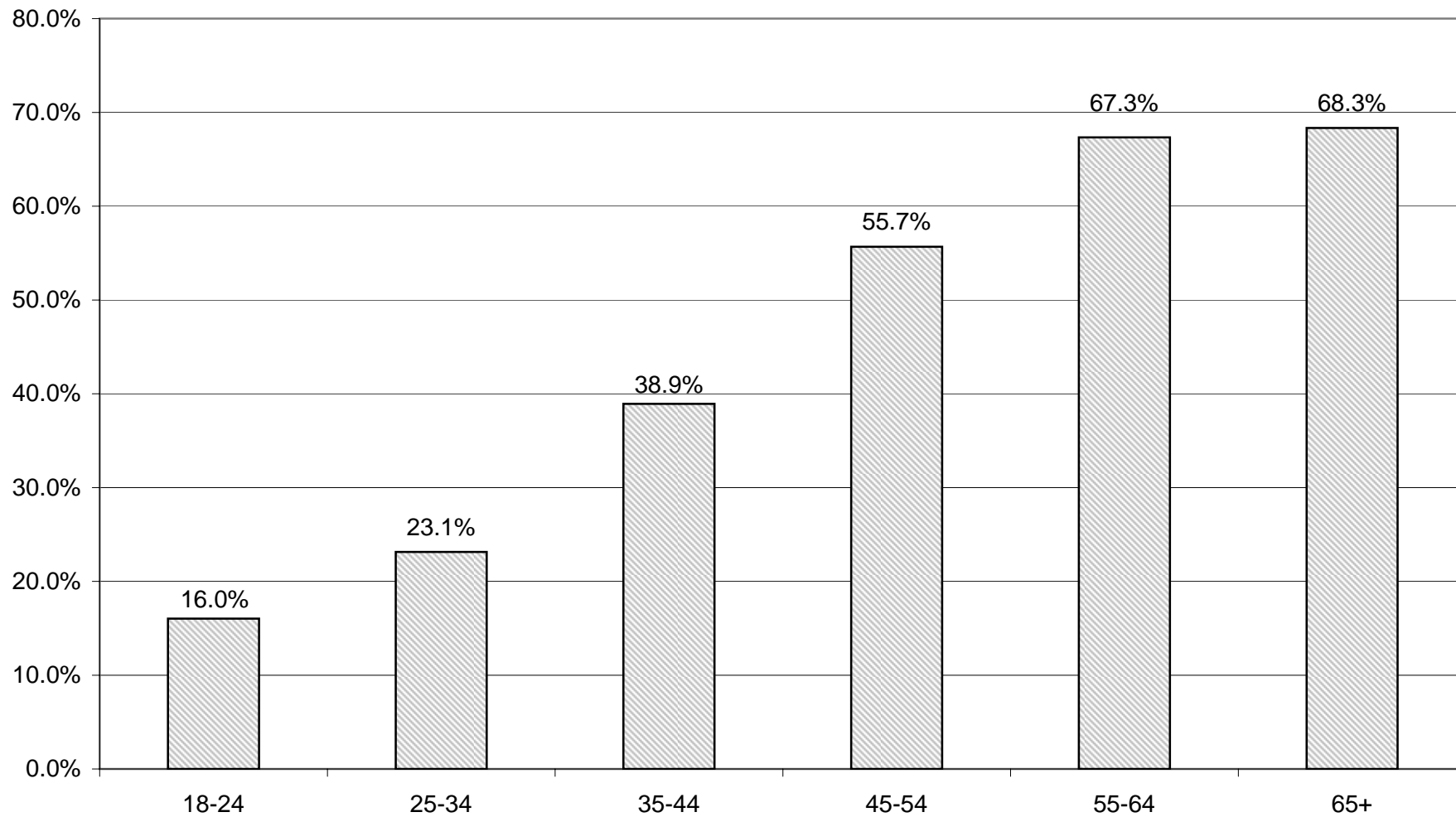
LT/LD SUMMARY
Part 2 of 2

LEGISLATIVE DISTRICT OR TOWN CITY	45-54			55-64			65+		
	VOTED	REGISTERED	TURNOUT	VOTED	REGISTERED	TURNOUT	VOTED	REGISTERED	TURNOUT
Leg. Dist. 06	98	185	52.97 %	69	112	61.61 %	66	101	65.35 %
Leg. Dist. 07	42	84	50.00 %	38	62	61.29 %	32	48	66.67 %
Leg. Dist. 21	227	486	46.71 %	212	336	63.10 %	129	221	58.37 %
Leg. Dist. 22	37	237	15.61 %	41	154	26.62 %	22	75	29.33 %
Leg. Dist. 23	291	443	65.69 %	295	417	70.74 %	179	257	69.65 %
Leg. Dist. 24	165	278	59.35 %	165	248	66.53 %	127	204	62.25 %
Leg. Dist. 25	93	250	37.20 %	117	192	60.94 %	68	147	46.26 %
Leg. Dist. 26	165	314	52.55 %	110	198	55.56 %	63	118	53.39 %
Leg. Dist. 27	160	353	45.33 %	149	274	54.38 %	82	157	52.23 %
Leg. Dist. 28	128	368	34.78 %	119	240	49.58 %	78	167	46.71 %
Leg. Dist. 29	123	370	33.24 %	133	291	45.70 %	85	207	41.06 %
TOTAL:	1,529	3,368	45.40 %	1,448	2,524	57.37 %	931	1,702	54.70 %
TOWNS									
Brighton	710	1,047	67.81 %	719	949	75.76 %	687	962	71.41 %
Chili	591	1,049	56.34 %	539	802	67.21 %	330	447	73.83 %
Clarkson	114	220	51.82 %	87	128	67.97 %	47	71	66.20 %
East Rochester	106	209	50.72 %	109	165	66.06 %	75	114	65.79 %
Gates	397	864	45.95 %	388	653	59.42 %	403	628	64.17 %
Greece	1,887	3,552	53.13 %	1,813	2,817	64.36 %	1,253	1,859	67.40 %
Hamlin	154	314	49.04 %	127	228	55.70 %	57	87	65.52 %
Henrietta	606	1,139	53.20 %	531	815	65.15 %	422	593	71.16 %
Irondequoit	1,086	1,896	57.28 %	1,112	1,577	70.51 %	897	1,317	68.11 %
Mendon	297	424	70.05 %	219	292	75.00 %	110	157	70.06 %
Ogden	461	839	54.95 %	359	544	65.99 %	191	274	69.71 %
Parma	405	707	57.28 %	315	471	66.88 %	156	225	69.33 %
Penfield	970	1,583	61.28 %	888	1,264	70.25 %	577	861	67.02 %
Perinton	1,184	1,850	64.00 %	1,293	1,722	75.09 %	850	1,137	74.76 %
Pittsford	700	1,090	64.22 %	699	948	73.73 %	664	839	79.14 %
Riga	135	229	58.95 %	116	157	73.89 %	70	86	81.40 %
Rush	108	183	59.02 %	108	149	72.48 %	58	78	74.36 %
Sweden	207	377	54.91 %	195	268	72.76 %	105	154	68.18 %
Webster	1,010	1,802	56.05 %	951	1,390	68.42 %	708	978	72.39 %
Wheatland	120	205	58.54 %	88	115	76.52 %	57	86	66.28 %
TOTAL:	11,248	19,579	57.45 %	10,656	15,454	68.95 %	7,717	10,953	70.46 %
GRAND TOTAL:	12,777	22,947	55.68 %	12,104	17,978	67.33 %	8,648	12,655	68.34 %

BLANKS TURNOUT - TOTAL AND GENDER 2006 GENERAL ELECTION

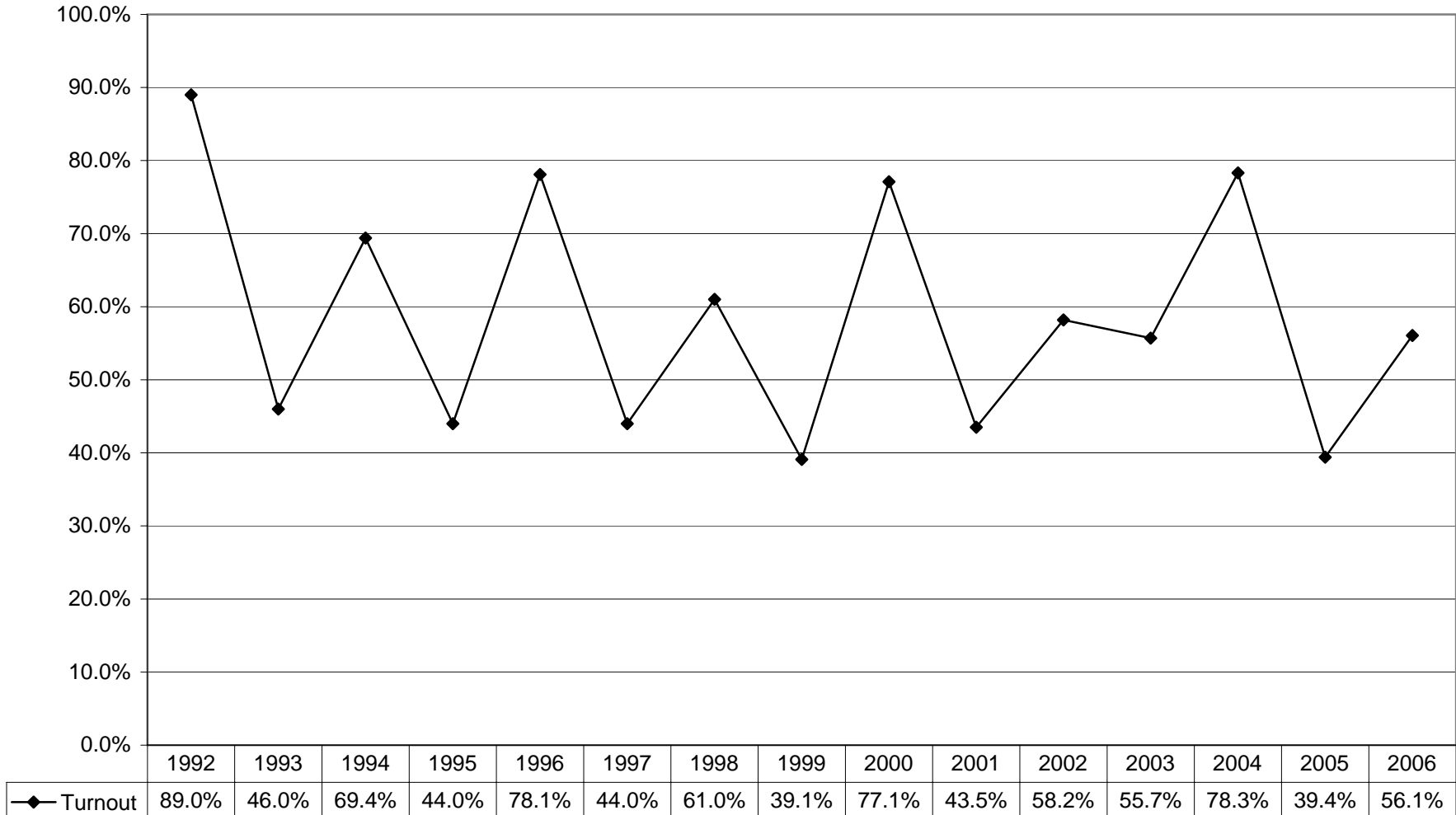


BLANKS TURNOUT BY AGE GROUP 2006 GENERAL ELECTION

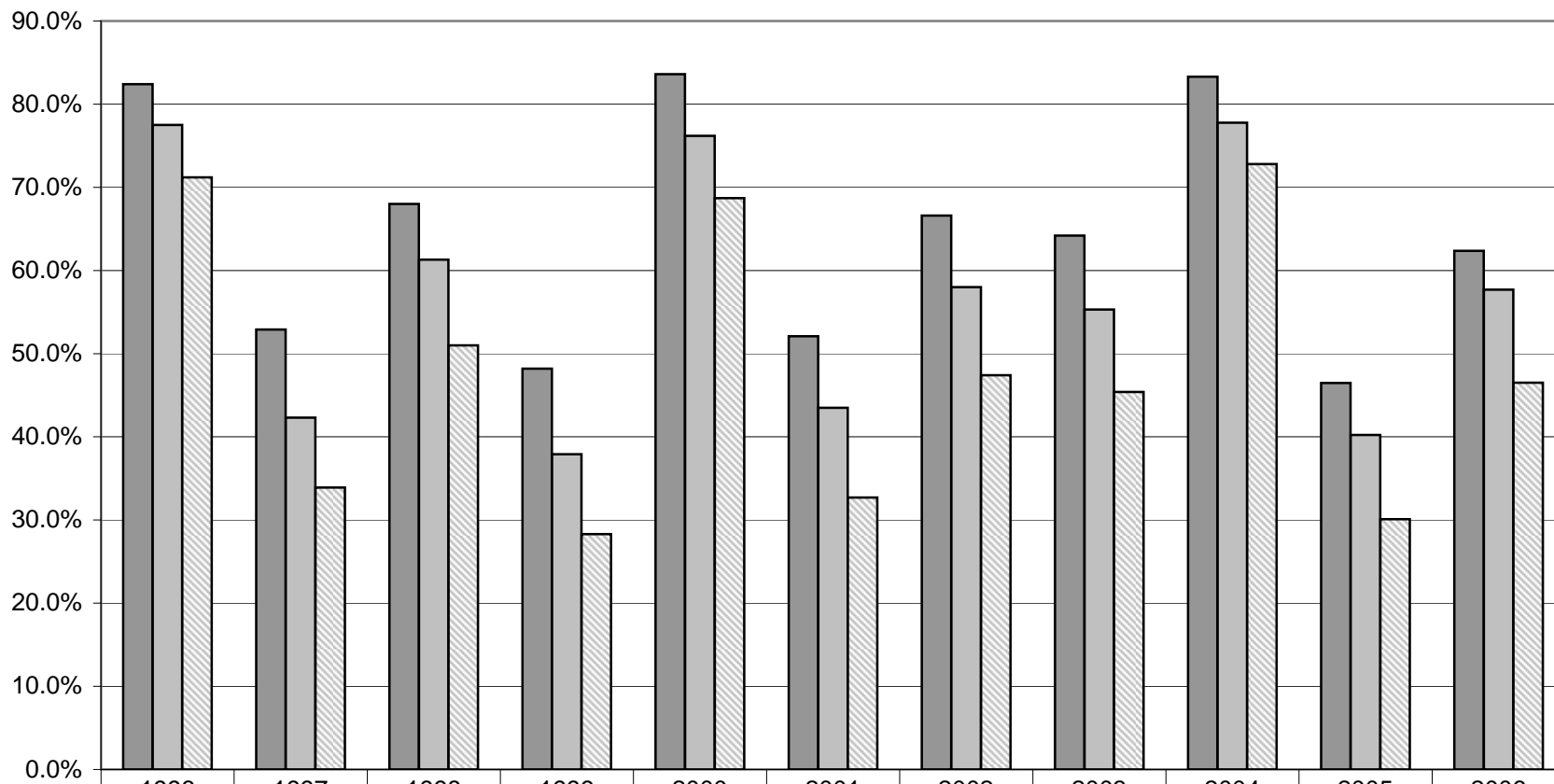


HISTORIC DATA

VOTER TURNOUT FOR THE GENERAL ELECTION 1992 Through 2006



VOTER TURNOUT BY PARTY 1996 Through 2006 General Elections



	1996	1997	1998	1999	2000	2001	2002	2003	2004	2005	2006
■ Republicans	82.4%	52.9%	68.0%	48.2%	83.6%	52.1%	66.6%	64.2%	83.3%	46.5%	62.4%
■ Democrats	77.5%	42.3%	61.3%	37.9%	76.2%	43.5%	58.0%	55.3%	77.8%	40.2%	57.7%
▨ Blanks	71.2%	33.9%	51.0%	28.3%	68.7%	32.7%	47.4%	45.4%	72.8%	30.1%	46.5%