



VOTER TURNOUT SUMMARY REPORT 2013 PRIMARY ELECTION

Monroe County Board of Elections
39 West Main Street, Rochester, New York 14614

January 9, 2014

Peter M. Quinn
Commissioner of Elections

Thomas F. Ferrarese
Commissioner of Elections

CONTENTS DESCRIPTION

General Summary	Page 1
Democratic Summary	Page 11
Republican Summary	Page 17
Independence Summary	Page 23

GENERAL SUMMARY

2013 PRIMARY ELECTION
VOTER TURNOUT BY GENDER

LT/LD SUMMARY

LEGISLATIVE DISTRICT OR TOWN	TOTAL VOTERS			MALES			FEMALES		
	VOTED	REGISTERED	TURNOUT	VOTED	REGISTERED	TURNOUT	VOTED	REGISTERED	TURNOUT
CITY									
Leg. Dist. 07	118	491	24.0%	44	184	23.9%	74	307	24.1%
Leg. Dist. 16	218	1,080	20.2%	82	386	21.2%	136	694	19.6%
Leg. Dist. 21	1,992	9,341	21.3%	749	3,690	20.3%	1,243	5,651	22.0%
Leg. Dist. 22	1,509	7,948	19.0%	540	3,270	16.5%	969	4,678	20.7%
Leg. Dist. 23	1,634	5,783	28.3%	748	2,537	29.5%	886	3,246	27.3%
Leg. Dist. 24	1,191	4,379	27.2%	489	1,847	26.5%	702	2,532	27.7%
Leg. Dist. 25	2,412	9,432	25.6%	931	3,900	23.9%	1,481	5,532	26.8%
Leg. Dist. 26	800	4,833	16.6%	294	1,746	16.8%	506	3,087	16.4%
Leg. Dist. 27	2,788	10,299	27.1%	995	3,991	24.9%	1,793	6,308	28.4%
Leg. Dist. 28	988	5,753	17.2%	378	2,226	17.0%	610	3,527	17.3%
Leg. Dist. 29	1,394	7,122	19.6%	529	2,765	19.1%	865	4,357	19.9%
CITY TOTAL:	15,044	66,461	22.6%	5,779	26,542	21.8%	9,265	39,919	23.2%
TOWNS									
Clarkson	263	1,638	16.1%	135	835	16.2%	128	803	15.9%
Greece	263	2,977	8.8%	149	1,392	10.7%	114	1,585	7.2%
Hamlin	762	2,315	32.9%	410	1,214	33.8%	352	1,101	32.0%
Henrietta	2,060	7,215	28.6%	1,074	3,678	29.2%	986	3,537	27.9%
Perinton	1,284	12,707	10.1%	680	6,462	10.5%	604	6,245	9.7%
TOWNS TOTAL:	4,632	26,852	17.3%	2,448	13,581	18.0%	2,184	13,271	16.5%
Grand Total:	19,676	93,313	21.1%	8,227	40,123	20.5%	11,449	53,190	21.5%

2013 PRIMARY ELECTION
VOTER TURNOUT BY PARTY

LT/LD SUMMARY

LEGISLATIVE DISTRICT OR TOWN	DEMOCRAT			REPUBLICAN			INDEPENDENCE		
	VOTED	REGISTERED	TURNOUT	VOTED	REGISTERED	TURNOUT	VOTED	REGISTERED	TURNOUT
CITY									
Leg. Dist. 07	118	491	24.0%	0	0	0.0%	0	0	0.0%
Leg. Dist. 16	218	1,080	20.2%	0	0	0.0%	0	0	0.0%
Leg. Dist. 21	1,992	9,341	21.3%	0	0	0.0%	0	0	0.0%
Leg. Dist. 22	1,509	7,945	19.0%	0	0	0.0%	0	0	0.0%
Leg. Dist. 23	1,634	5,783	28.3%	0	0	0.0%	0	0	0.0%
Leg. Dist. 24	1,191	4,379	27.2%	0	0	0.0%	0	0	0.0%
Leg. Dist. 25	2,412	9,432	25.6%	0	0	0.0%	0	0	0.0%
Leg. Dist. 26	800	4,833	16.6%	0	0	0.0%	0	0	0.0%
Leg. Dist. 27	2,788	10,299	27.1%	0	0	0.0%	0	0	0.0%
Leg. Dist. 28	988	5,753	17.2%	0	0	0.0%	0	0	0.0%
Leg. Dist. 29	1,394	7,122	19.6%	0	0	0.0%	0	0	0.0%
TOTAL:	15,044	66,458	22.6%	0	0	0.0%	0	0	0.0%
TOWNS									
Clarkson	0	0	0.0%	263	1,638	16.1%	0	0	0.0%
Greece	0	0	0.0%	0	0	0.0%	263	2,977	8.8%
Hamlin	0	0	0.0%	762	2,315	32.9%	0	0	0.0%
Henrietta	0	0	0.0%	2,060	7,215	28.6%	0	0	0.0%
Perinton	0	0	0.0%	1,284	12,707	10.1%	0	0	0.0%
TOTAL:	0	0	0.0%	4,369	23,875	18.3%	263	2,977	8.8%
GRAND TOTAL:	15,044	66,458	22.6%	4,369	23,875	18.3%	263	2,977	8.8%

2013 PRIMARY ELECTION
VOTER TURNOUT BY AGE

LT/LD SUMMARY
Part 1 of 2

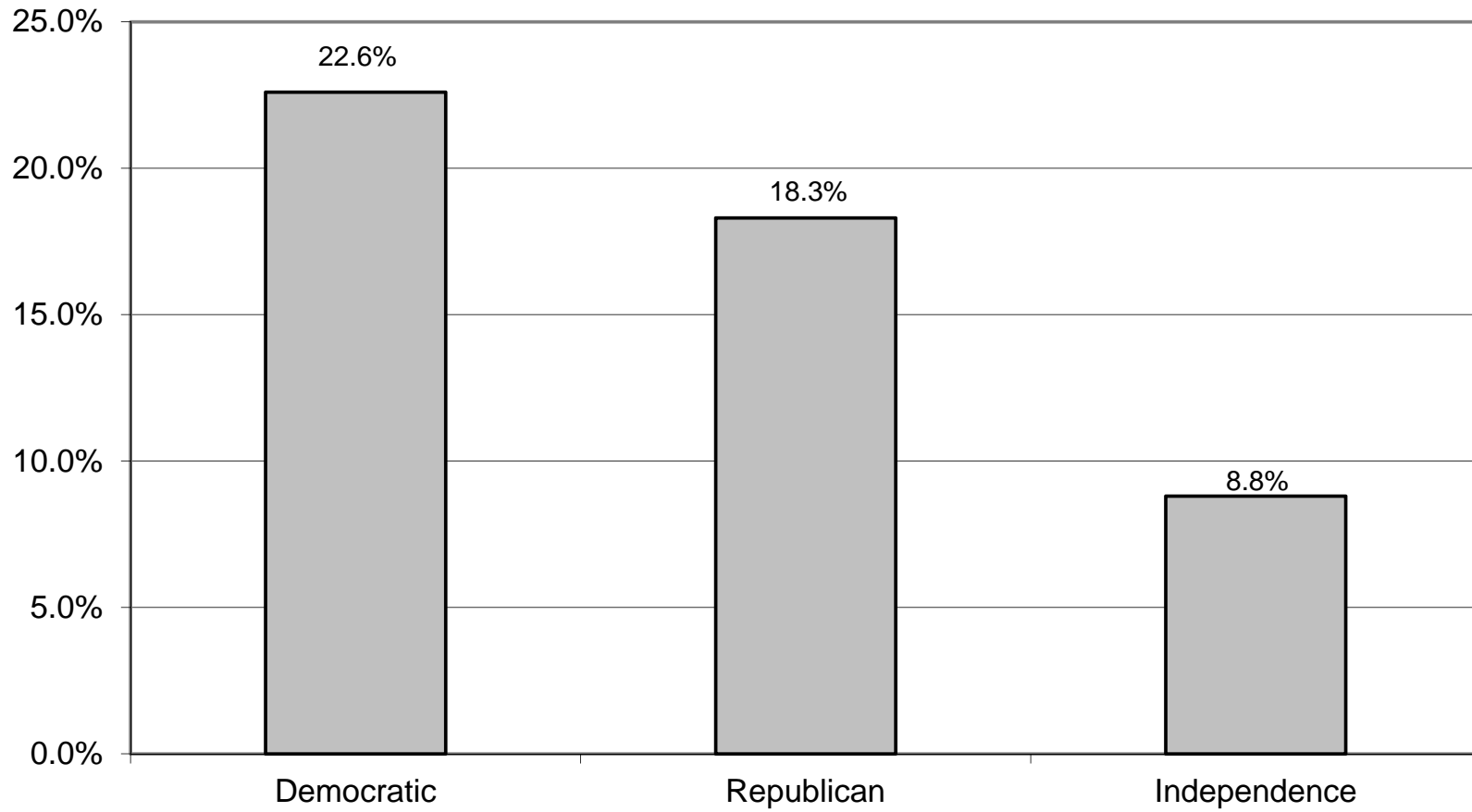
LEGISLATIVE DISTRICT OR TOWN	NDOB			18-24			25-34			35-44		
	VOTED	REGISTERED	TURNOUT	VOTED	REGISTERED	TURNOUT	VOTED	REGISTERED	TURNOUT	VOTED	REGISTERED	TURNOUT
CITY												
Leg. Dist. 07	1	5	20.0%	1	28	3.6%	3	63	4.8%	7	60	11.7%
Leg. Dist. 16	3	16	18.8%	2	105	1.9%	23	234	9.8%	29	191	15.2%
Leg. Dist. 21	14	43	32.6%	72	957	7.5%	186	1,979	9.4%	276	1,735	15.9%
Leg. Dist. 22	12	25	48.0%	50	924	5.4%	147	1,593	9.2%	166	1,291	12.9%
Leg. Dist. 23	17	34	50.0%	28	350	8.0%	127	1,484	8.6%	129	819	15.8%
Leg. Dist. 24	9	20	45.0%	22	462	4.8%	124	1,097	11.3%	174	685	25.4%
Leg. Dist. 25	24	49	49.0%	80	952	8.4%	234	1,885	12.4%	272	1,500	18.1%
Leg. Dist. 26	9	26	34.6%	14	436	3.2%	103	1,010	10.2%	111	874	12.7%
Leg. Dist. 27	21	44	47.7%	118	1,164	10.1%	262	1,940	13.5%	379	1,729	21.9%
Leg. Dist. 28	3	13	23.1%	37	676	5.5%	106	1,240	8.5%	158	1,069	14.8%
Leg. Dist. 29	10	20	50.0%	47	793	5.9%	115	1,255	9.2%	149	1,168	12.8%
CITY TOTAL:	123	295	41.7%	471	6,847	6.9%	1,430	13,780	10.4%	1,850	11,121	16.6%
TOWNS												
Clarkson	0	3	0.0%	1	84	1.2%	11	160	6.9%	33	235	14.0%
Greece	0	0	0.0%	22	349	6.3%	17	641	2.7%	25	543	4.6%
Hamlin	6	13	46.2%	15	116	12.9%	41	228	18.0%	63	309	20.4%
Henrietta	9	38	23.7%	42	376	11.2%	73	781	9.3%	152	990	15.4%
Perinton	3	45	6.7%	26	732	3.6%	32	1,009	3.2%	76	1,528	5.0%
TOWNS TOTAL:	18	99	18.2%	106	1,657	6.4%	174	2,819	6.2%	349	3,605	9.7%
Grand Total:	141	394	35.8%	577	8,504	6.8%	1,604	16,599	9.7%	2,199	14,726	14.9%

2013 PRIMARY ELECTION
VOTER TURNOUT BY AGE

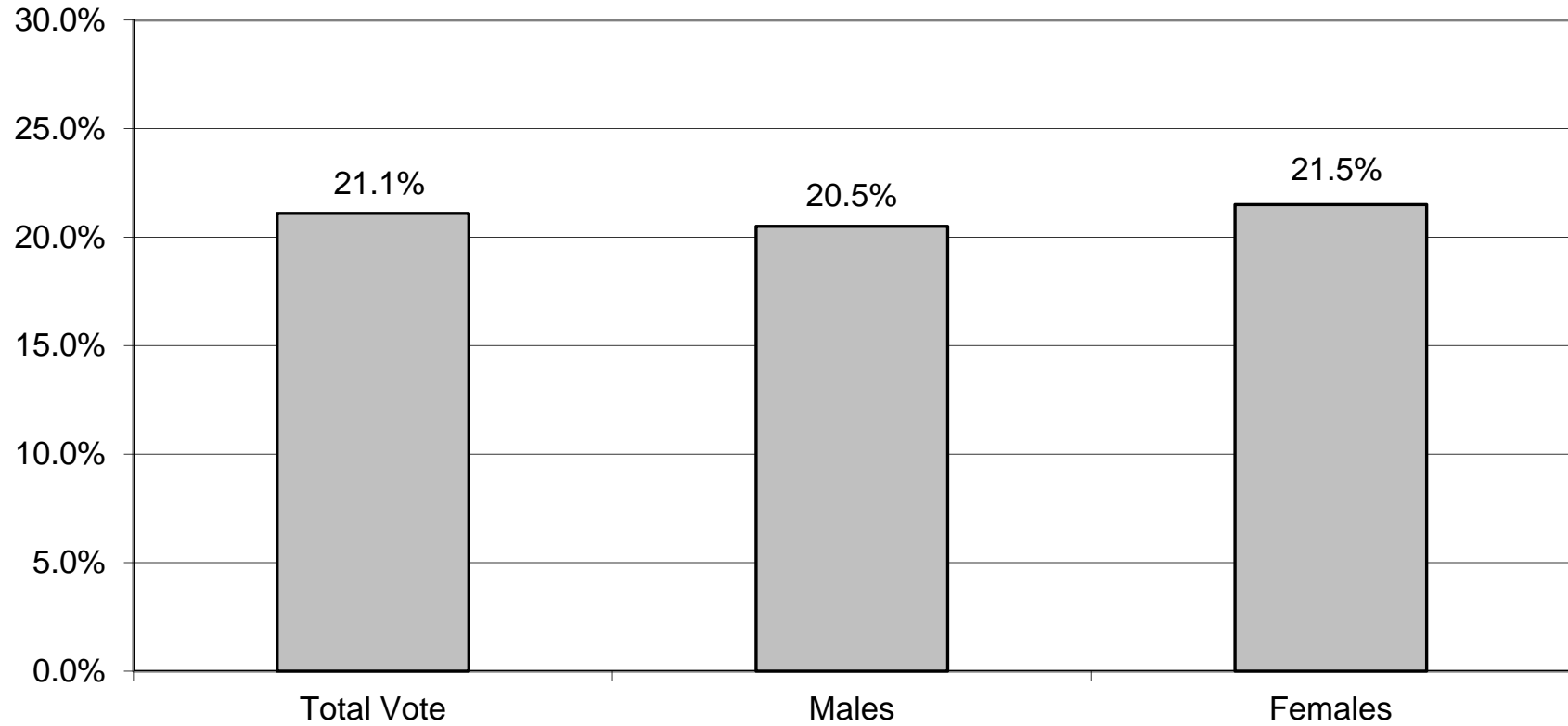
LT/LD SUMMARY
Part 2 of 2

LEGISLATIVE DISTRICT OR TOWN	45-54			55-64			65+		
	VOTED	REGISTERED	TURNOUT	VOTED	REGISTERED	TURNOUT	VOTED	REGISTERED	TURNOUT
CITY									
Leg. Dist. 07	14	72	19.4%	43	124	34.7%	49	139	35.3%
Leg. Dist. 16	54	206	26.2%	51	167	30.5%	56	161	34.8%
Leg. Dist. 21	422	1,796	23.5%	522	1,505	34.7%	500	1,326	37.7%
Leg. Dist. 22	317	1,557	20.4%	401	1,299	30.9%	416	1,259	33.0%
Leg. Dist. 23	283	914	31.0%	475	1,061	44.8%	575	1,121	51.3%
Leg. Dist. 24	244	697	35.0%	328	781	42.0%	290	637	45.5%
Leg. Dist. 25	493	1,798	27.4%	536	1,532	35.0%	773	1,716	45.0%
Leg. Dist. 26	183	927	19.7%	175	821	21.3%	205	739	27.7%
Leg. Dist. 27	632	2,103	30.1%	675	1,658	40.7%	701	1,661	42.2%
Leg. Dist. 28	222	1,152	19.3%	252	957	26.3%	210	646	32.5%
Leg. Dist. 29	285	1,369	20.8%	385	1,254	30.7%	403	1,263	31.9%
CITY TOTAL:	3,149	12,591	25.0%	3,843	11,159	34.4%	4,178	10,668	39.2%
TOWNS									
Clarkson	53	407	13.0%	62	325	19.1%	103	424	24.3%
Greece	61	566	10.8%	46	437	10.5%	92	441	20.9%
Hamlin	154	522	29.5%	206	542	38.0%	277	585	47.4%
Henrietta	364	1,476	24.7%	500	1,413	35.4%	920	2,141	43.0%
Perinton	196	2,873	6.8%	269	2,511	10.7%	682	4,009	17.0%
TOWNS TOTAL:	828	5,844	14.2%	1,083	5,228	20.7%	2,074	7,600	27.3%
Grand Total:	3,977	18,435	21.6%	4,926	16,387	30.1%	6,252	18,268	34.2%

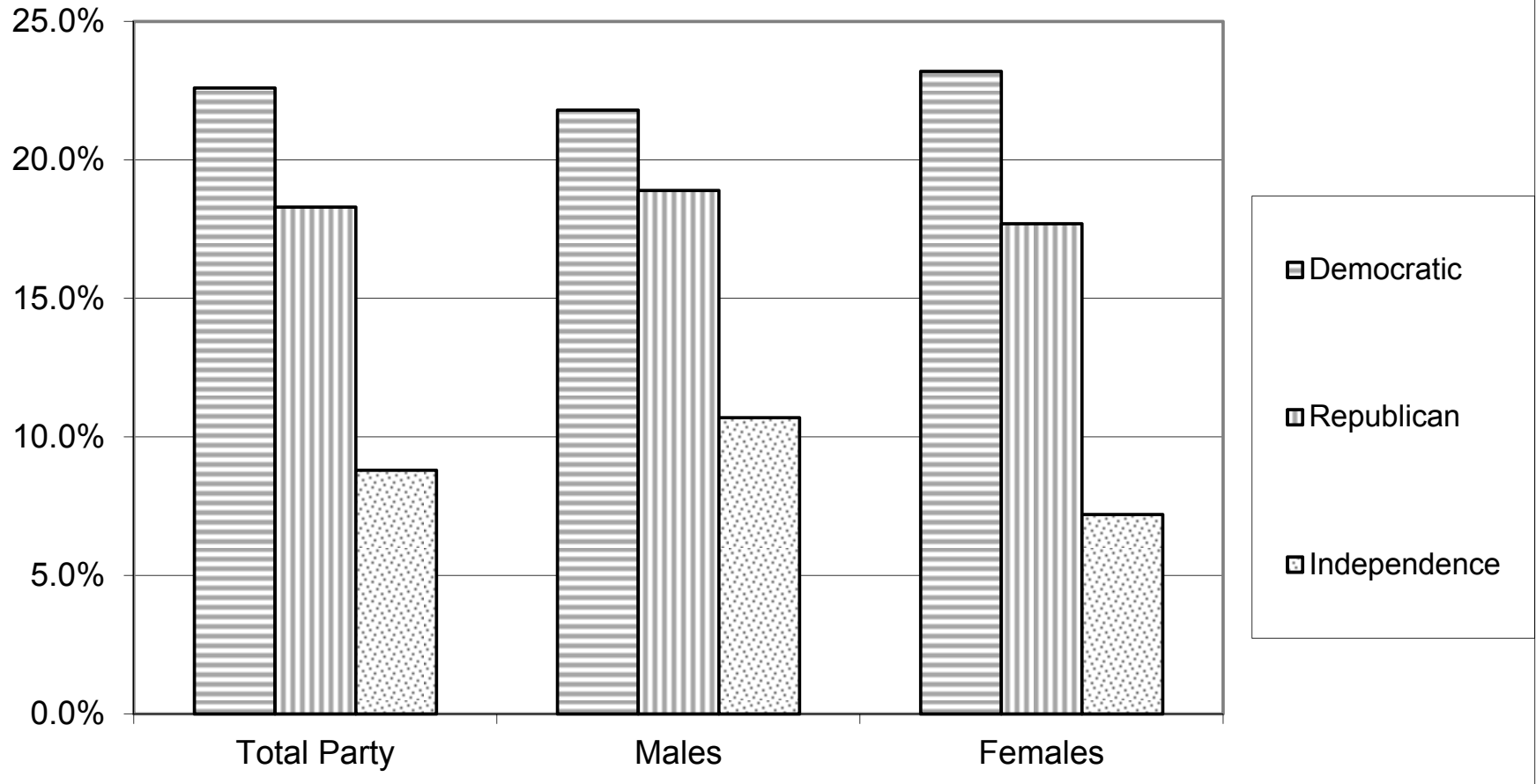
VOTER TURNOUT BY PARTY 2013 PRIMARY ELECTION



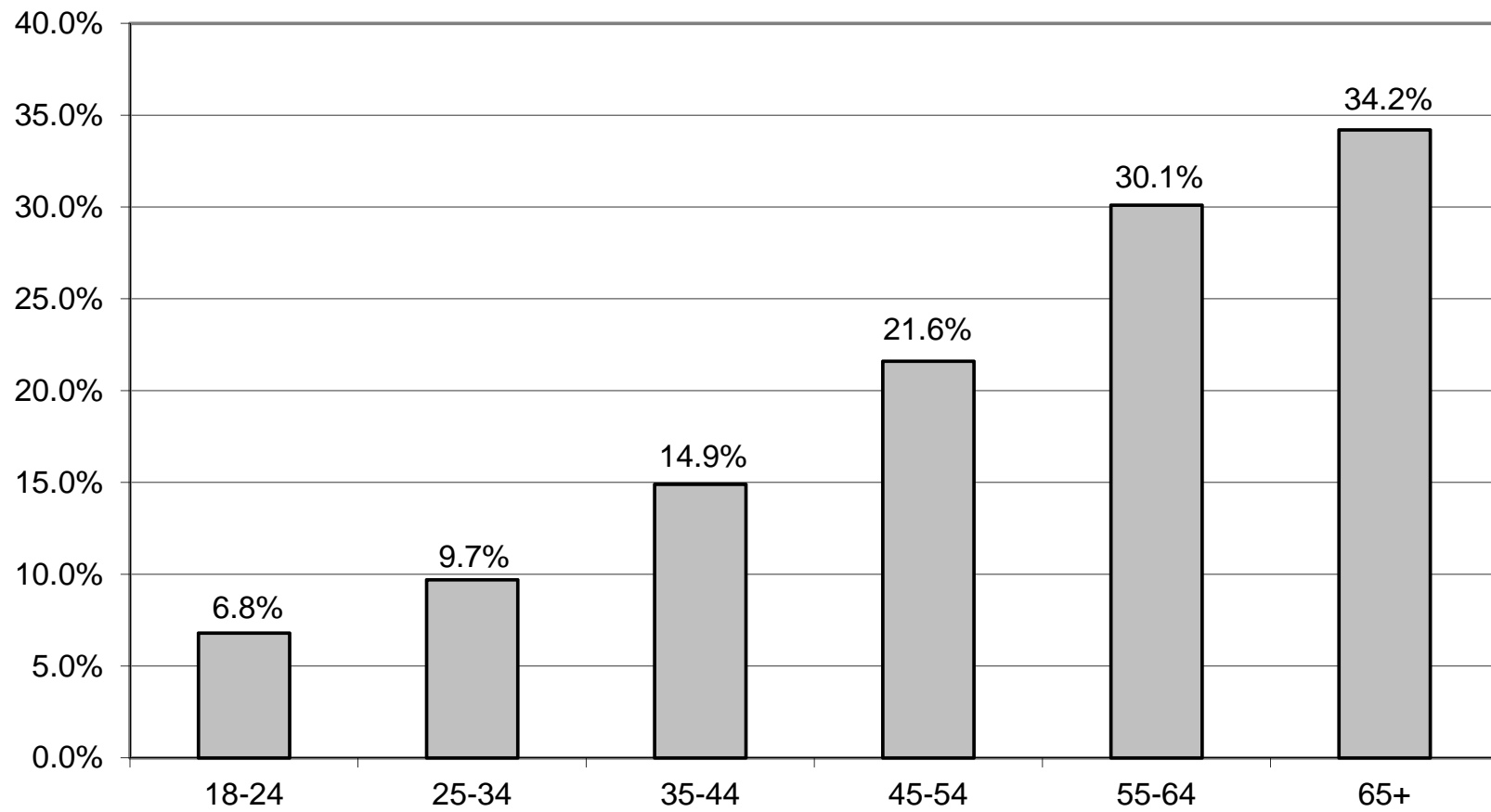
VOTER TURNOUT - TOTAL AND BY GENDER 2013 PRIMARY ELECTION



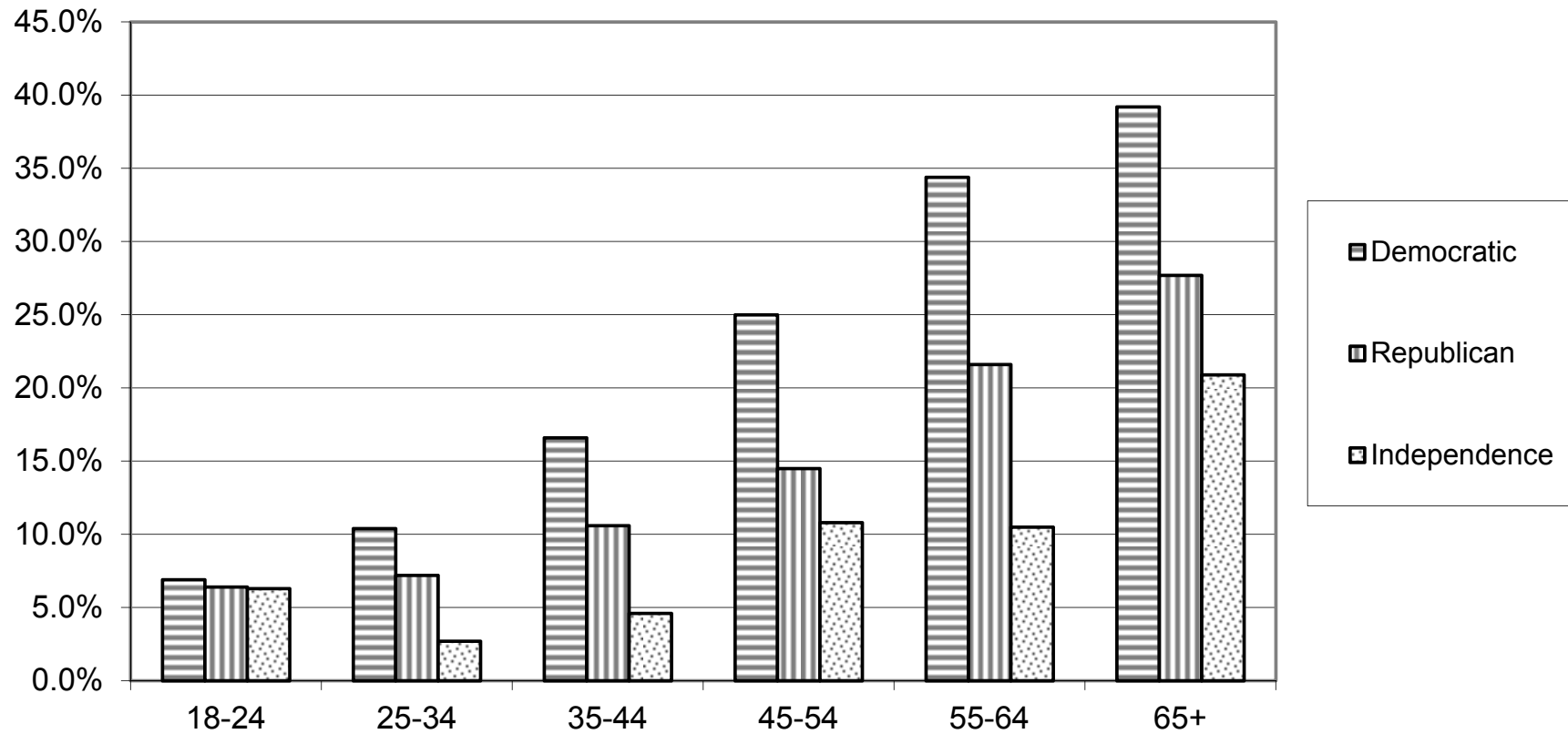
COMPARISON OF TOTAL AND GENDER TURNOUT 2013 PRIMARY ELECTION



VOTER TURNOUT BY AGE GROUP 2013 PRIMARY ELECTION



COMPARISON OF TURNOUT BY AGE GROUP 2013 PRIMARY ELECTION



DEMOCRATIC SUMMARY

2013 PRIMARY ELECTION
DEMOCRATIC TURNOUT BY GENDER

LT/LD SUMMARY

LEGISLATIVE DISTRICT OR TOWN	TOTAL VOTERS			MALES			FEMALES		
	VOTED	REGISTERED	TURNOUT	VOTED	REGISTERED	TURNOUT	VOTED	REGISTERED	TURNOUT
CITY									
Leg. Dist. 07	118	491	24.0%	44	184	23.9%	74	307	24.1%
Leg. Dist. 16	218	1,080	20.2%	82	386	21.2%	136	694	19.6%
Leg. Dist. 21	1,992	9,341	21.3%	749	3,690	20.3%	1,243	5,651	22.0%
Leg. Dist. 22	1,509	7,945	19.0%	540	3,267	16.5%	969	4,678	20.7%
Leg. Dist. 23	1,634	5,783	28.3%	748	2,537	29.5%	886	3,246	27.3%
Leg. Dist. 24	1,191	4,379	27.2%	489	1,847	26.5%	702	2,532	27.7%
Leg. Dist. 25	2,412	9,432	25.6%	931	3,900	23.9%	1,481	5,532	26.8%
Leg. Dist. 26	800	4,833	16.6%	294	1,746	16.8%	506	3,087	16.4%
Leg. Dist. 27	2,788	10,299	27.1%	995	3,991	24.9%	1,793	6,308	28.4%
Leg. Dist. 28	988	5,753	17.2%	378	2,226	17.0%	610	3,527	17.3%
Leg. Dist. 29	1,394	7,122	19.6%	529	2,765	19.1%	865	4,357	19.9%
CITY TOTAL:	15,044	66,458	22.6%	5,779	26,539	21.8%	9,265	39,919	23.2%
TOWNS									
Clarkson	0	0	0.0%	0	0	0.0%	0	0	0.0%
Greece	0	0	0.0%	0	0	0.0%	0	0	0.0%
Hamlin	0	0	0.0%	0	0	0.0%	0	0	0.0%
Henrietta	0	0	0.0%	0	0	0.0%	0	0	0.0%
Perinton	0	0	0.0%	0	0	0.0%	0	0	0.0%
TOWNS TOTAL:	0	0	0.0%	0	0	0.0%	0	0	0.0%
Grand Total:	15,044	66,458	22.6%	5,779	26,539	21.8%	9,265	39,919	23.2%

2013 PRIMARY ELECTION
VOTER TURNOUT BY AGE

DEMOCRATIC LT/LD SUMMARY
Part 1 of 2

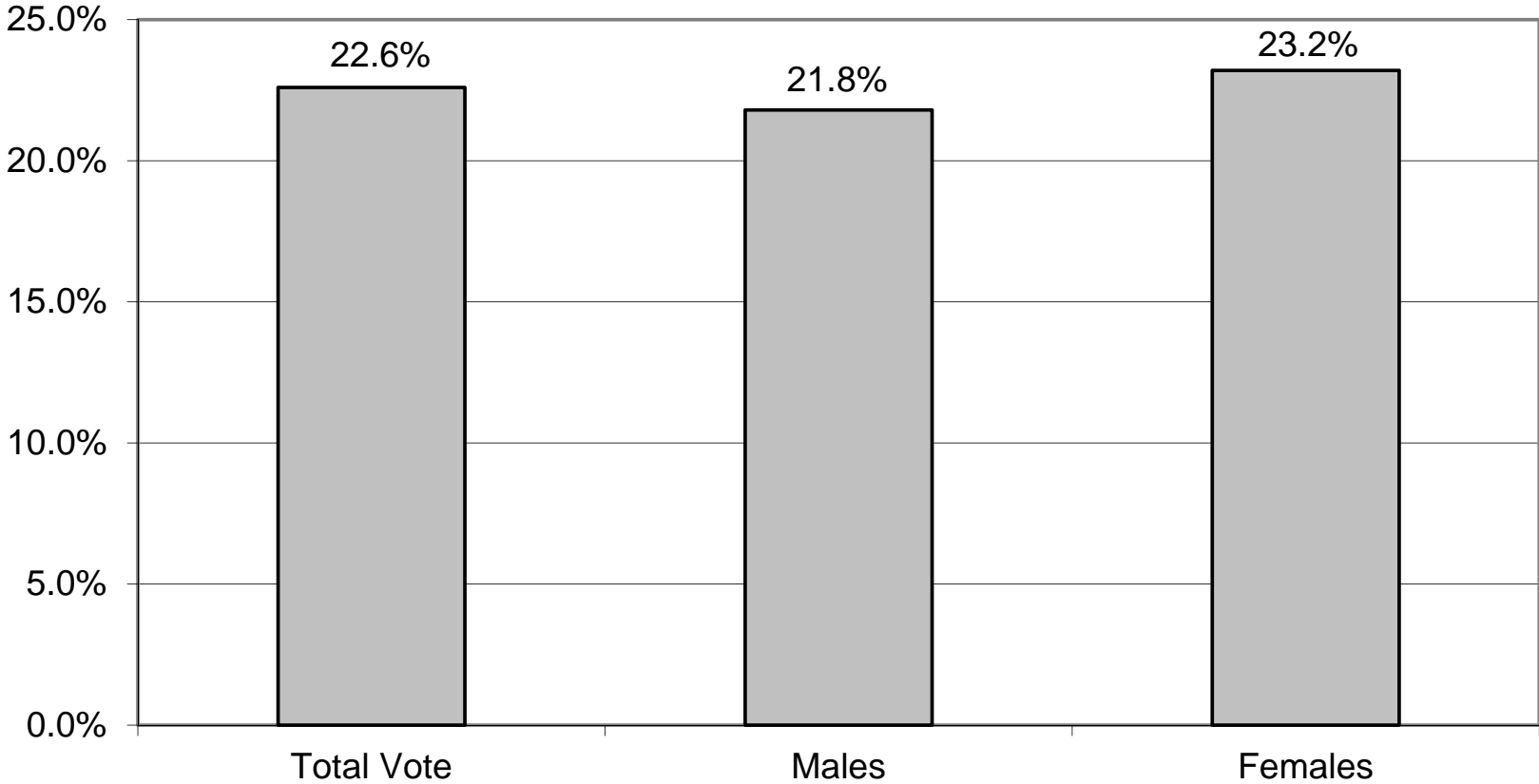
LEGISLATIVE DISTRICT OR TOWN	NDOB			18-24			25-34			35-44		
	VOTED	REGISTERED	TURNOUT	VOTED	REGISTERED	TURNOUT	VOTED	REGISTERED	TURNOUT	VOTED	REGISTERED	TURNOUT
CITY												
Leg. Dist. 07	1	5	20.0%	1	28	3.6%	3	63	4.8%	7	60	11.7%
Leg. Dist. 16	3	16	18.8%	2	105	1.9%	23	234	9.8%	29	191	15.2%
Leg. Dist. 21	14	43	32.6%	72	957	7.5%	186	1,979	9.4%	276	1,735	15.9%
Leg. Dist. 22	12	25	48.0%	50	924	5.4%	147	1,593	9.2%	166	1,291	12.9%
Leg. Dist. 23	17	34	50.0%	28	350	8.0%	127	1,484	8.6%	129	819	15.8%
Leg. Dist. 24	9	20	45.0%	22	462	4.8%	124	1,097	11.3%	174	685	25.4%
Leg. Dist. 25	24	49	49.0%	80	952	8.4%	234	1,885	12.4%	272	1,500	18.1%
Leg. Dist. 26	9	26	34.6%	14	436	3.2%	103	1,010	10.2%	111	874	12.7%
Leg. Dist. 27	21	44	47.7%	118	1,164	10.1%	262	1,940	13.5%	379	1,729	21.9%
Leg. Dist. 28	3	13	23.1%	37	676	5.5%	106	1,240	8.5%	158	1,069	14.8%
Leg. Dist. 29	10	20	50.0%	47	793	5.9%	115	1,255	9.2%	149	1,168	12.8%
CITY TOTAL:	123	295	41.7%	471	6,847	6.9%	1,430	13,780	10.4%	1,850	11,121	16.6%
TOWNS												
Clarkson	0	0	0.0%	0	0	0.0%	0	0	0.0%	0	0	0.0%
Greece	0	0	0.0%	0	0	0.0%	0	0	0.0%	0	0	0.0%
Hamlin	0	0	0.0%	0	0	0.0%	0	0	0.0%	0	0	0.0%
Henrietta	0	0	0.0%	0	0	0.0%	0	0	0.0%	0	0	0.0%
Perinton	0	0	0.0%	0	0	0.0%	0	0	0.0%	0	0	0.0%
TOWNS TOTAL:	0	0	0.0%	0	0	0.0%	0	0	0.0%	0	0	0.0%
Grand Total:	123	295	41.7%	471	6,847	6.9%	1,430	13,780	10.4%	1,850	11,121	16.6%

2013 PRIMARY ELECTION
VOTER TURNOUT BY AGE

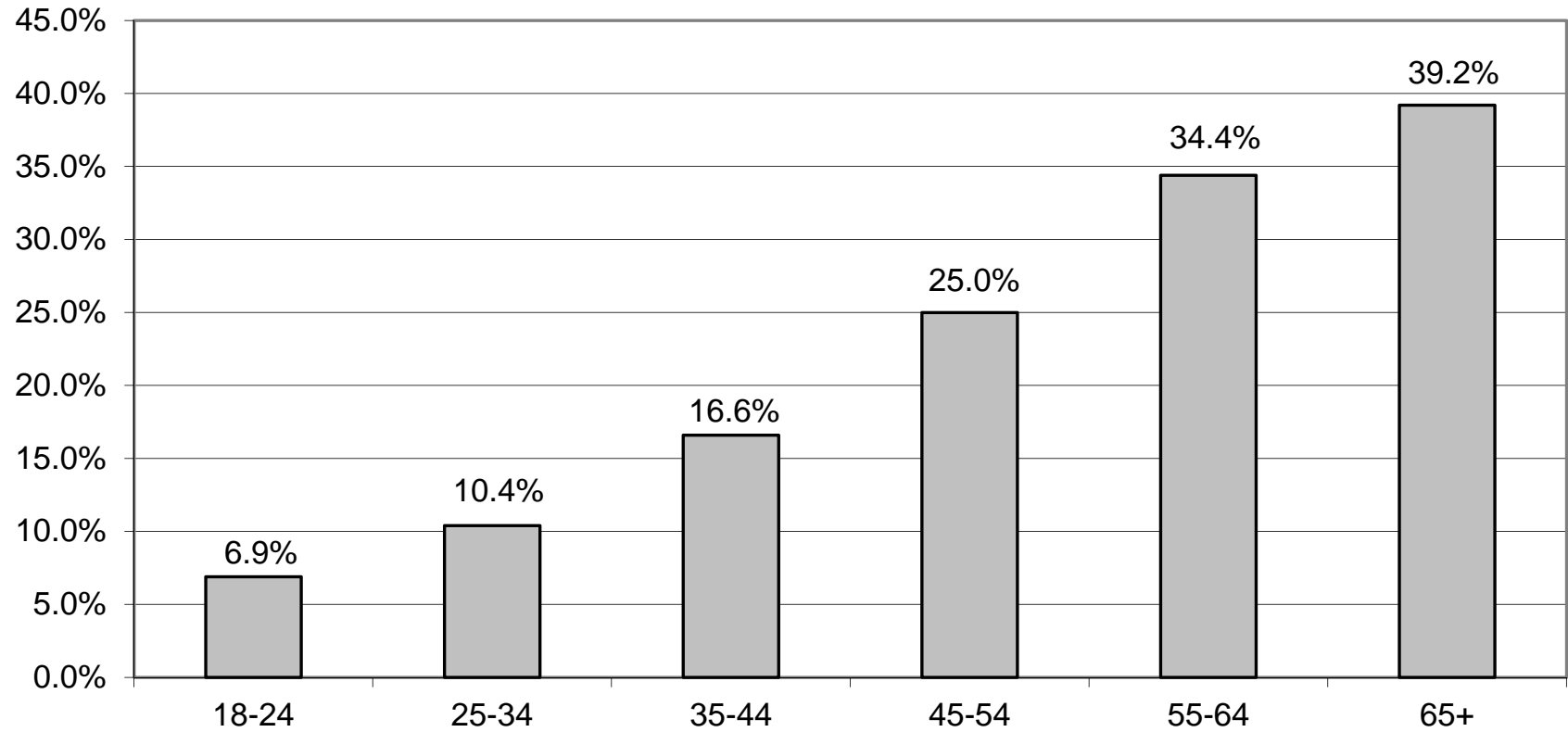
DEMOCRATIC LT/LD SUMMARY
Part 2 of 2

LEGISLATIVE DISTRICT OR TOWN	45-54			55-64			65+		
	VOTED	REGISTERED	TURNOUT	VOTED	REGISTERED	TURNOUT	VOTED	REGISTERED	TURNOUT
CITY									
Leg. Dist. 07	14	72	19.4%	43	124	34.7%	49	139	35.3%
Leg. Dist. 16	54	206	26.2%	51	167	30.5%	56	161	34.8%
Leg. Dist. 21	422	1,796	23.5%	522	1,505	34.7%	500	1,326	37.7%
Leg. Dist. 22	317	1,554	20.4%	401	1,299	30.9%	416	1,259	33.0%
Leg. Dist. 23	283	914	31.0%	475	1,061	44.8%	575	1,121	51.3%
Leg. Dist. 24	244	697	35.0%	328	781	42.0%	290	637	45.5%
Leg. Dist. 25	493	1,798	27.4%	536	1,532	35.0%	773	1,716	45.0%
Leg. Dist. 26	183	927	19.7%	175	821	21.3%	205	739	27.7%
Leg. Dist. 27	632	2,103	30.1%	675	1,658	40.7%	701	1,661	42.2%
Leg. Dist. 28	222	1,152	19.3%	252	957	26.3%	210	646	32.5%
Leg. Dist. 29	285	1,369	20.8%	385	1,254	30.7%	403	1,263	31.9%
CITY TOTAL:	3,149	12,588	25.0%	3,843	11,159	34.4%	4,178	10,668	39.2%
TOWNS									
Clarkson	0	0	0.0%	0	0	0.0%	0	0	0.0%
Greece	0	0	0.0%	0	0	0.0%	0	0	0.0%
Hamlin	0	0	0.0%	0	0	0.0%	0	0	0.0%
Henrietta	0	0	0.0%	0	0	0.0%	0	0	0.0%
Perinton	0	0	0.0%	0	0	0.0%	0	0	0.0%
TOWNS TOTAL:	0	0	0.0%	0	0	0.0%	0	0	0.0%
Grand Total:	3,149	12,588	25.0%	3,843	11,159	34.4%	4,178	10,668	39.2%

DEMOCRATIC TURNOUT - TOTAL AND GENDER
2013 PRIMARY ELECTION



DEMOCRATIC TURNOUT BY AGE GROUP 2013 PRIMARY ELECTION



REPUBLICAN SUMMARY

2013 PRIMARY ELECTION
REPUBLICAN TURNOUT BY GENDER

LT/LD SUMMARY

LEGISLATIVE DISTRICT OR TOWN	TOTAL VOTERS			MALES			FEMALES		
	VOTED	REGISTERED	TURNOUT	VOTED	REGISTERED	TURNOUT	VOTED	REGISTERED	TURNOUT
CITY									
Leg. Dist. 07	0	0	0.0%	0	0	0.0%	0	0	0.0%
Leg. Dist. 16	0	0	0.0%	0	0	0.0%	0	0	0.0%
Leg. Dist. 21	0	0	0.0%	0	0	0.0%	0	0	0.0%
Leg. Dist. 22	0	0	0.0%	0	0	0.0%	0	0	0.0%
Leg. Dist. 23	0	0	0.0%	0	0	0.0%	0	0	0.0%
Leg. Dist. 24	0	0	0.0%	0	0	0.0%	0	0	0.0%
Leg. Dist. 25	0	0	0.0%	0	0	0.0%	0	0	0.0%
Leg. Dist. 26	0	0	0.0%	0	0	0.0%	0	0	0.0%
Leg. Dist. 27	0	0	0.0%	0	0	0.0%	0	0	0.0%
Leg. Dist. 28	0	0	0.0%	0	0	0.0%	0	0	0.0%
Leg. Dist. 29	0	0	0.0%	0	0	0.0%	0	0	0.0%
CITY TOTAL:	<u>0</u>	<u>0</u>	<u>0.0%</u>	<u>0</u>	<u>0</u>	<u>0.0%</u>	<u>0</u>	<u>0</u>	<u>0.0%</u>
TOWNS									
Clarkson	263	1,638	16.1%	135	835	16.2%	128	803	15.9%
Greece	0	0	0.0%	0	0	0.0%	0	0	0.0%
Hamlin	762	2,315	32.9%	410	1,214	33.8%	352	1,101	32.0%
Henrietta	2,060	7,215	28.6%	1,074	3,678	29.2%	986	3,537	27.9%
Perinton	1,284	12,707	10.1%	680	6,462	10.5%	604	6,245	9.7%
TOWNS TOTAL:	<u>4,369</u>	<u>23,875</u>	<u>18.3%</u>	<u>2,299</u>	<u>12,189</u>	<u>18.9%</u>	<u>2,070</u>	<u>11,686</u>	<u>17.7%</u>
GRAND TOTAL:	<u>4,369</u>	<u>23,875</u>	<u>18.3%</u>	<u>2,299</u>	<u>12,189</u>	<u>18.9%</u>	<u>2,070</u>	<u>11,686</u>	<u>17.7%</u>

2013 PRIMARY ELECTION
VOTER TURNOUT BY AGE

REPUBLICAN LT/LD SUMMARY
Part 1 of 2

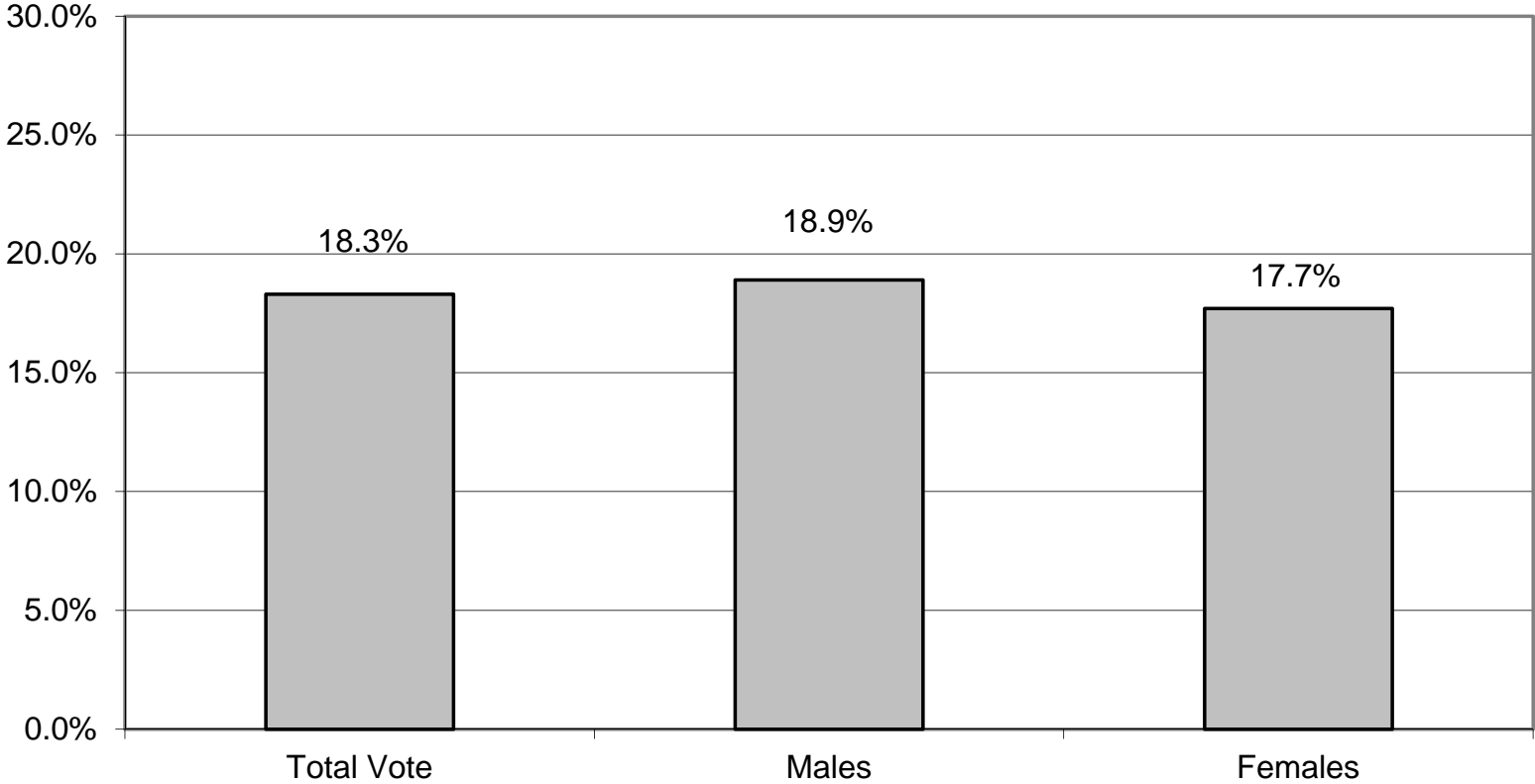
LEGISLATIVE DISTRICT OR TOWN	NDOB			18-24			25-34			35-44		
	VOTED	REGISTERED	TURNOUT	VOTED	REGISTERED	TURNOUT	VOTED	REGISTERED	TURNOUT	VOTED	REGISTERED	TURNOUT
CITY												
Leg. Dist. 07	0	0	0.0%	0	0	0.0%	0	0	0.0%	0	0	0.0%
Leg. Dist. 16	0	0	0.0%	0	0	0.0%	0	0	0.0%	0	0	0.0%
Leg. Dist. 21	0	0	0.0%	0	0	0.0%	0	0	0.0%	0	0	0.0%
Leg. Dist. 22	0	0	0.0%	0	0	0.0%	0	0	0.0%	0	0	0.0%
Leg. Dist. 23	0	0	0.0%	0	0	0.0%	0	0	0.0%	0	0	0.0%
Leg. Dist. 24	0	0	0.0%	0	0	0.0%	0	0	0.0%	0	0	0.0%
Leg. Dist. 25	0	0	0.0%	0	0	0.0%	0	0	0.0%	0	0	0.0%
Leg. Dist. 26	0	0	0.0%	0	0	0.0%	0	0	0.0%	0	0	0.0%
Leg. Dist. 27	0	0	0.0%	0	0	0.0%	0	0	0.0%	0	0	0.0%
Leg. Dist. 28	0	0	0.0%	0	0	0.0%	0	0	0.0%	0	0	0.0%
Leg. Dist. 29	0	0	0.0%	0	0	0.0%	0	0	0.0%	0	0	0.0%
CITY TOTAL:	<u>0</u>	<u>0</u>	<u>0.0%</u>	<u>0</u>	<u>0</u>	<u>0.0%</u>	<u>0</u>	<u>0</u>	<u>0.0%</u>	<u>0</u>	<u>0</u>	<u>0.0%</u>
TOWNS												
Clarkson	0	3	0.0%	1	84	1.2%	11	160	6.9%	33	235	14.0%
Greece	0	0	0.0%	0	0	0.0%	0	0	0.0%	0	0	0.0%
Hamlin	6	13	46.2%	15	116	12.9%	41	228	18.0%	63	309	20.4%
Henrietta	9	38	23.7%	42	376	11.2%	73	781	9.3%	152	990	15.4%
Perinton	3	45	6.7%	26	732	3.6%	32	1,009	3.2%	76	1,528	5.0%
TOWNS TOTAL:	<u>18</u>	<u>99</u>	<u>18.2%</u>	<u>84</u>	<u>1,308</u>	<u>6.4%</u>	<u>157</u>	<u>2,178</u>	<u>7.2%</u>	<u>324</u>	<u>3,062</u>	<u>10.6%</u>
GRAND TOTAL:	<u>18</u>	<u>99</u>	<u>18.2%</u>	<u>84</u>	<u>1,308</u>	<u>6.4%</u>	<u>157</u>	<u>2,178</u>	<u>7.2%</u>	<u>324</u>	<u>3,062</u>	<u>10.6%</u>

2013 PRIMARY ELECTION
VOTER TURNOUT BY AGE

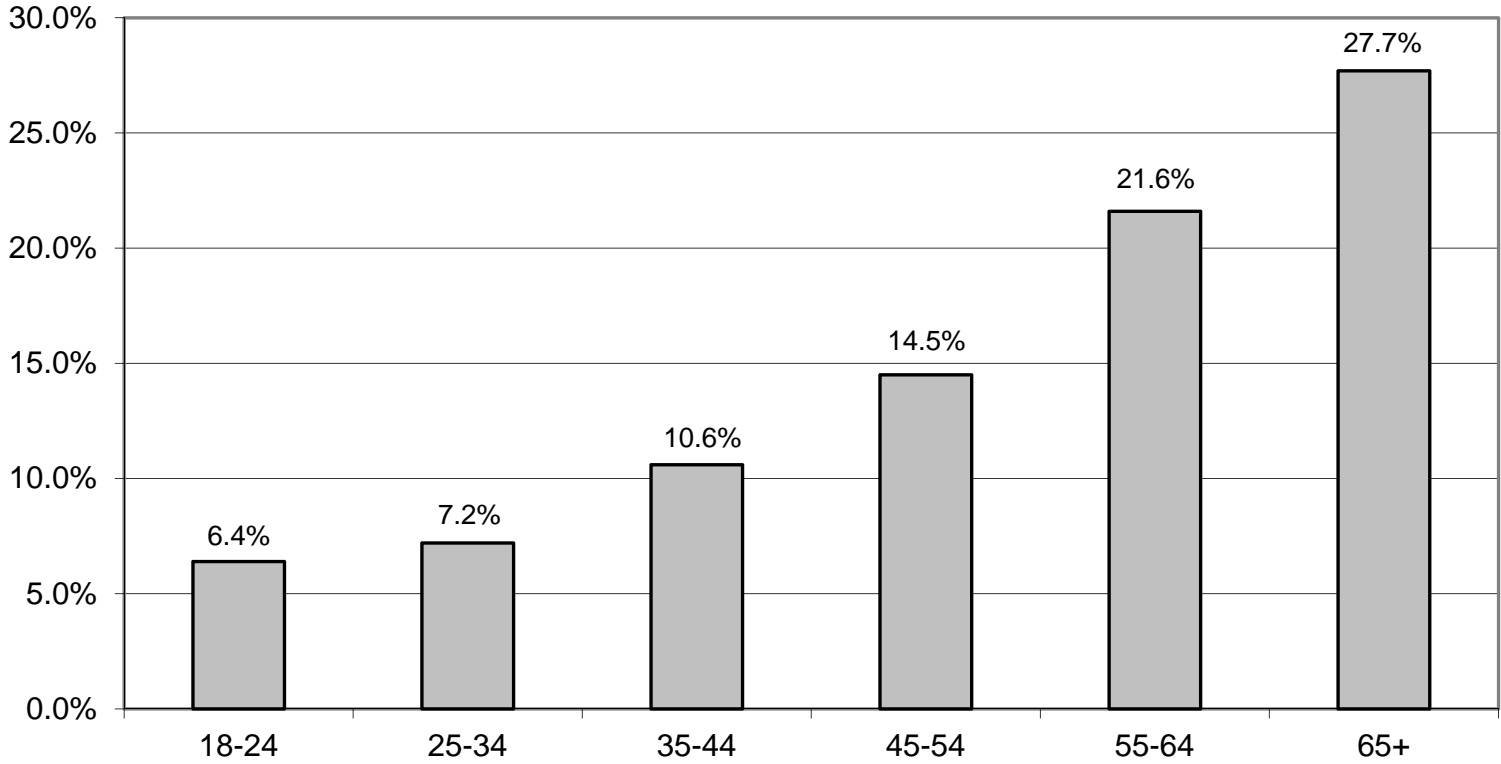
REPUBLICAN LT/LD SUMMARY
Part 2 of 2

LEGISLATIVE DISTRICT OR TOWN	45-54			55-64			65+		
	VOTED	REGISTERED	TURNOUT	VOTED	REGISTERED	TURNOUT	VOTED	REGISTERED	TURNOUT
CITY									
Leg. Dist. 07	0	0	0.0%	0	0	0.0%	0	0	0.0%
Leg. Dist. 16	0	0	0.0%	0	0	0.0%	0	0	0.0%
Leg. Dist. 21	0	0	0.0%	0	0	0.0%	0	0	0.0%
Leg. Dist. 22	0	0	0.0%	0	0	0.0%	0	0	0.0%
Leg. Dist. 23	0	0	0.0%	0	0	0.0%	0	0	0.0%
Leg. Dist. 24	0	0	0.0%	0	0	0.0%	0	0	0.0%
Leg. Dist. 25	0	0	0.0%	0	0	0.0%	0	0	0.0%
Leg. Dist. 26	0	0	0.0%	0	0	0.0%	0	0	0.0%
Leg. Dist. 27	0	0	0.0%	0	0	0.0%	0	0	0.0%
Leg. Dist. 28	0	0	0.0%	0	0	0.0%	0	0	0.0%
Leg. Dist. 29	0	0	0.0%	0	0	0.0%	0	0	0.0%
CITY TOTAL:	<u>0</u>	<u>0</u>	<u>0.0%</u>	<u>0</u>	<u>0</u>	<u>0.0%</u>	<u>0</u>	<u>0</u>	<u>0.0%</u>
TOWNS									
Clarkson	53	407	13.0%	62	325	19.1%	103	424	24.3%
Greece	0	0	0.0%	0	0	0.0%	0	0	0.0%
Hamlin	154	522	29.5%	206	542	38.0%	277	585	47.4%
Henrietta	364	1,476	24.7%	500	1,413	35.4%	920	2,141	43.0%
Perinton	196	2,873	6.8%	269	2,511	10.7%	682	4,009	17.0%
TOWNS TOTAL:	<u>767</u>	<u>5,278</u>	<u>14.5%</u>	<u>1,037</u>	<u>4,791</u>	<u>21.6%</u>	<u>1,982</u>	<u>7,159</u>	<u>27.7%</u>
GRAND TOTAL:	<u>767</u>	<u>5,278</u>	<u>14.5%</u>	<u>1,037</u>	<u>4,791</u>	<u>21.6%</u>	<u>1,982</u>	<u>7,159</u>	<u>27.7%</u>

**REPUBLICAN TURNOUT - TOTAL AND GENDER
2013 PRIMARY ELECTION**



REPUBLICAN TURNOUT BY AGE GROUP 2013 PRIMARY ELECTION



INDEPENDENCE SUMMARY

2013 PRIMARY ELECTION
INDEPENDENCE TURNOUT BY GENDER

LT/LD SUMMARY

LEGISLATIVE DISTRICT OR TOWN	TOTAL VOTERS			MALES			FEMALES		
	VOTED	REGISTERED	TURNOUT	VOTED	REGISTERED	TURNOUT	VOTED	REGISTERED	TURNOUT
CITY									
Leg. Dist. 07	0	0	0.0%	0	0	0.0%	0	0	0.0%
Leg. Dist. 16	0	0	0.0%	0	0	0.0%	0	0	0.0%
Leg. Dist. 21	0	0	0.0%	0	0	0.0%	0	0	0.0%
Leg. Dist. 22	0	0	0.0%	0	0	0.0%	0	0	0.0%
Leg. Dist. 23	0	0	0.0%	0	0	0.0%	0	0	0.0%
Leg. Dist. 24	0	0	0.0%	0	0	0.0%	0	0	0.0%
Leg. Dist. 25	0	0	0.0%	0	0	0.0%	0	0	0.0%
Leg. Dist. 26	0	0	0.0%	0	0	0.0%	0	0	0.0%
Leg. Dist. 27	0	0	0.0%	0	0	0.0%	0	0	0.0%
Leg. Dist. 28	0	0	0.0%	0	0	0.0%	0	0	0.0%
Leg. Dist. 29	0	0	0.0%	0	0	0.0%	0	0	0.0%
CITY TOTAL:	0	0	0.0%	0	0	0.0%	0	0	0.0%
TOWNS									
Clarkson	0	0	0.0%	0	0	0.0%	0	0	0.0%
Greece	263	2,977	8.8%	149	1,392	10.7%	114	1,585	7.2%
Hamlin	0	0	0.0%	0	0	0.0%	0	0	0.0%
Henrietta	0	0	0.0%	0	0	0.0%	0	0	0.0%
Perinton	0	0	0.0%	0	0	0.0%	0	0	0.0%
TOWNS TOTAL:	263	2,977	8.8%	149	1,392	10.7%	114	1,585	7.2%
Grand Total:	263	2,977	8.8%	149	1,392	10.7%	114	1,585	7.2%

2013 PRIMARY ELECTION
VOTER TURNOUT BY AGE

INDEPENDENCE LT/LD SUMMARY
Part 1 of 2

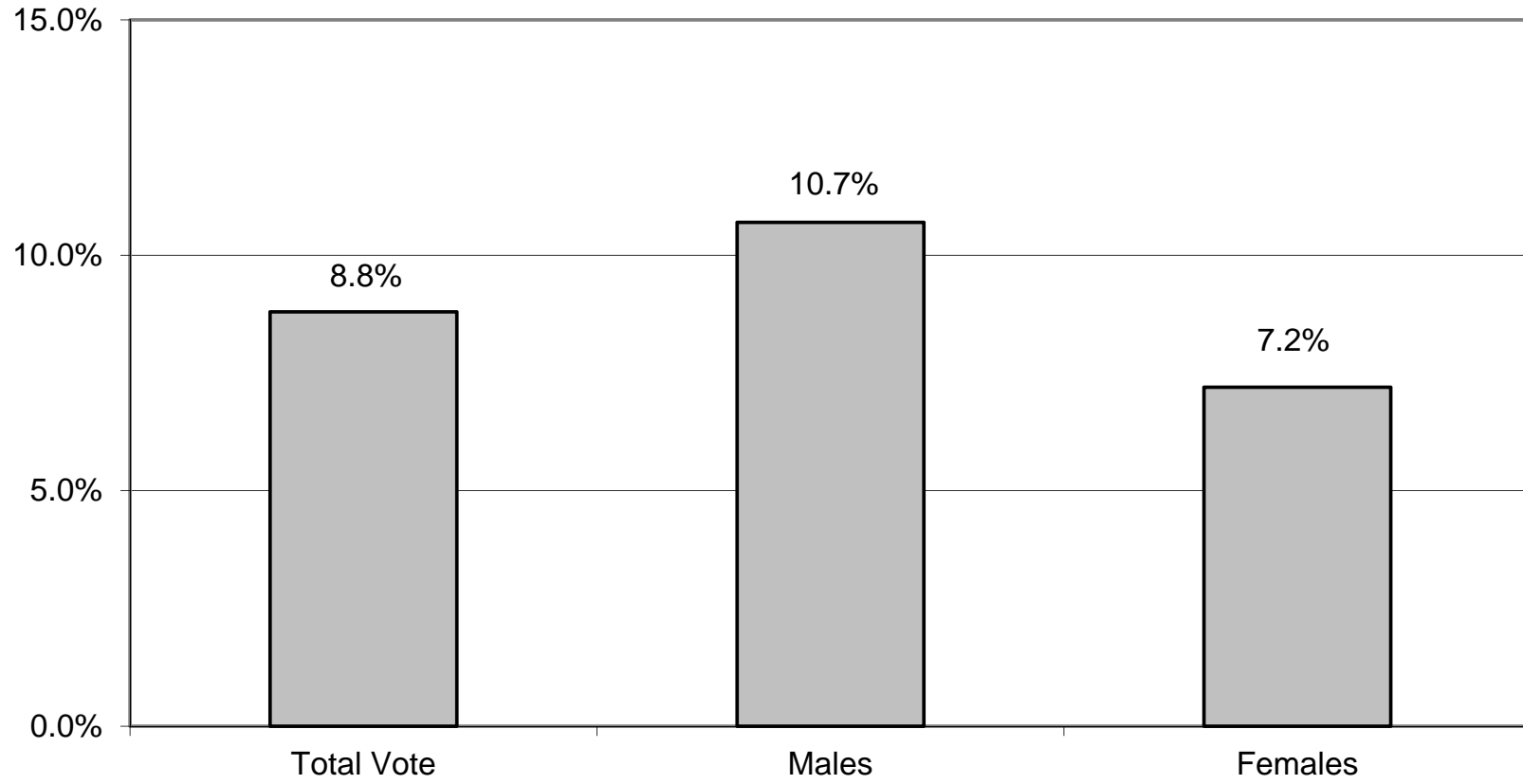
LEGISLATIVE DISTRICT OR TOWN	NDOB			18-24			25-34			35-44		
	VOTED	REGISTERED	TURNOUT	VOTED	REGISTERED	TURNOUT	VOTED	REGISTERED	TURNOUT	VOTED	REGISTERED	TURNOUT
CITY												
Leg. Dist. 07	0	0	0.0%	0	0	0.0%	0	0	0.0%	0	0	0.0%
Leg. Dist. 16	0	0	0.0%	0	0	0.0%	0	0	0.0%	0	0	0.0%
Leg. Dist. 21	0	0	0.0%	0	0	0.0%	0	0	0.0%	0	0	0.0%
Leg. Dist. 22	0	0	0.0%	0	0	0.0%	0	0	0.0%	0	0	0.0%
Leg. Dist. 23	0	0	0.0%	0	0	0.0%	0	0	0.0%	0	0	0.0%
Leg. Dist. 24	0	0	0.0%	0	0	0.0%	0	0	0.0%	0	0	0.0%
Leg. Dist. 25	0	0	0.0%	0	0	0.0%	0	0	0.0%	0	0	0.0%
Leg. Dist. 26	0	0	0.0%	0	0	0.0%	0	0	0.0%	0	0	0.0%
Leg. Dist. 27	0	0	0.0%	0	0	0.0%	0	0	0.0%	0	0	0.0%
Leg. Dist. 28	0	0	0.0%	0	0	0.0%	0	0	0.0%	0	0	0.0%
Leg. Dist. 29	0	0	0.0%	0	0	0.0%	0	0	0.0%	0	0	0.0%
CITY TOTAL:	<u>0</u>	<u>0</u>	<u>0.0%</u>	<u>0</u>	<u>0</u>	<u>0.0%</u>	<u>0</u>	<u>0</u>	<u>0.0%</u>	<u>0</u>	<u>0</u>	<u>0.0%</u>
TOWNS												
Clarkson	0	0	0.0%	0	0	0.0%	0	0	0.0%	0	0	0.0%
Greece	0	0	0.0%	22	349	6.3%	17	641	2.7%	25	543	4.6%
Hamlin	0	0	0.0%	0	0	0.0%	0	0	0.0%	0	0	0.0%
Henrietta	0	0	0.0%	0	0	0.0%	0	0	0.0%	0	0	0.0%
Perinton	0	0	0.0%	0	0	0.0%	0	0	0.0%	0	0	0.0%
TOWNS TOTAL:	<u>0</u>	<u>0</u>	<u>0.0%</u>	<u>22</u>	<u>349</u>	<u>6.3%</u>	<u>17</u>	<u>641</u>	<u>2.7%</u>	<u>25</u>	<u>543</u>	<u>4.6%</u>
Grand Total:	<u>0</u>	<u>0</u>	<u>0.0%</u>	<u>22</u>	<u>349</u>	<u>6.3%</u>	<u>17</u>	<u>641</u>	<u>2.7%</u>	<u>25</u>	<u>543</u>	<u>4.6%</u>

2013 PRIMARY ELECTION
VOTER TURNOUT BY AGE

INDEPENDENCE LT/LD SUMMARY
Part 2 of 2

LEGISLATIVE DISTRICT OR TOWN	45-54			55-64			65+		
	VOTED	REGISTERED	TURNOUT	VOTED	REGISTERED	TURNOUT	VOTED	REGISTERED	TURNOUT
CITY									
Leg. Dist. 07	0	0	0.0%	0	0	0.0%	0	0	0.0%
Leg. Dist. 16	0	0	0.0%	0	0	0.0%	0	0	0.0%
Leg. Dist. 21	0	0	0.0%	0	0	0.0%	0	0	0.0%
Leg. Dist. 22	0	0	0.0%	0	0	0.0%	0	0	0.0%
Leg. Dist. 23	0	0	0.0%	0	0	0.0%	0	0	0.0%
Leg. Dist. 24	0	0	0.0%	0	0	0.0%	0	0	0.0%
Leg. Dist. 25	0	0	0.0%	0	0	0.0%	0	0	0.0%
Leg. Dist. 26	0	0	0.0%	0	0	0.0%	0	0	0.0%
Leg. Dist. 27	0	0	0.0%	0	0	0.0%	0	0	0.0%
Leg. Dist. 28	0	0	0.0%	0	0	0.0%	0	0	0.0%
Leg. Dist. 29	0	0	0.0%	0	0	0.0%	0	0	0.0%
CITY TOTAL:	<u>0</u>	<u>0</u>	<u>0.0%</u>	<u>0</u>	<u>0</u>	<u>0.0%</u>	<u>0</u>	<u>0</u>	<u>0.0%</u>
TOWNS									
Clarkson	0	0	0.0%	0	0	0.0%	0	0	0.0%
Greece	61	566	10.8%	46	437	10.5%	92	441	20.9%
Hamlin	0	0	0.0%	0	0	0.0%	0	0	0.0%
Henrietta	0	0	0.0%	0	0	0.0%	0	0	0.0%
Perinton	0	0	0.0%	0	0	0.0%	0	0	0.0%
TOWNS TOTAL:	<u>61</u>	<u>566</u>	<u>10.8%</u>	<u>46</u>	<u>437</u>	<u>10.5%</u>	<u>92</u>	<u>441</u>	<u>20.9%</u>
Grand Total:	<u>61</u>	<u>566</u>	<u>10.8%</u>	<u>46</u>	<u>437</u>	<u>10.5%</u>	<u>92</u>	<u>441</u>	<u>20.9%</u>

INDEPENDENCE TURNOUT - TOTAL AND GENDER 2013 PRIMARY ELECTION



INDEPENDENCE TURNOUT BY AGE GROUP 2013 PRIMARY ELECTION

