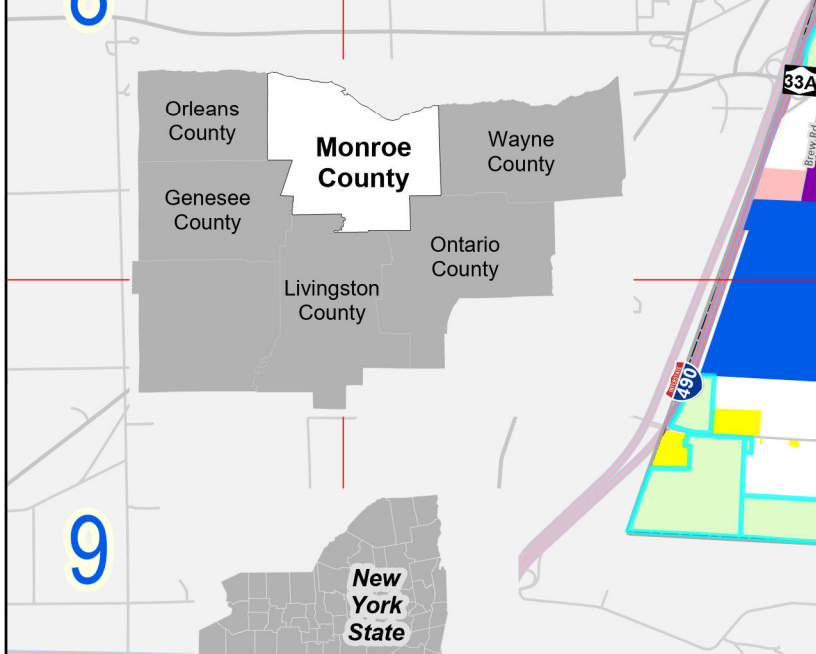
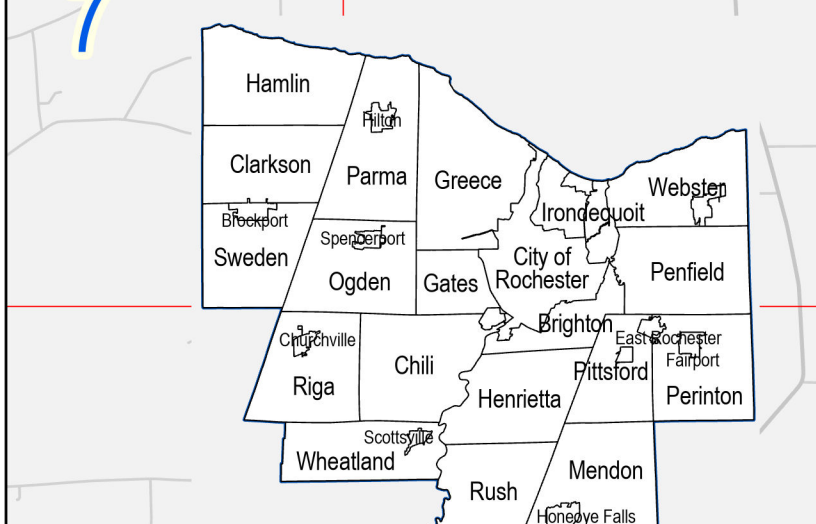
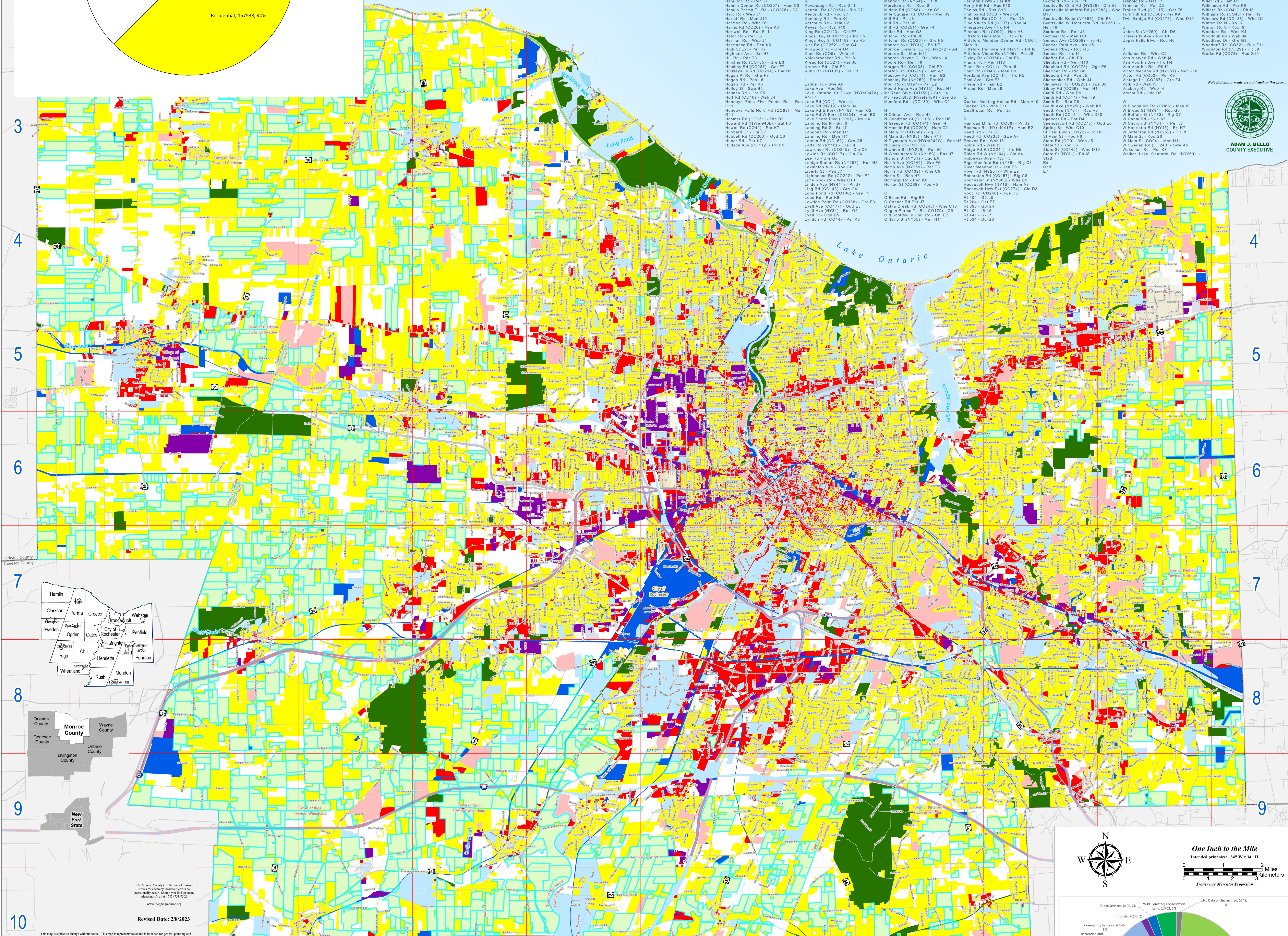


Street Name	Classification Code	Street Name	Classification Code
TL Rd (CO85) - G8		Clifford Ave - Roc G8	
1) - G14		Clifton Rd (CO135) - Ch D9	
Alameda Ave (NY338) - Wm E9		Clover St - Bn B8	
Albion Rd (CO238) - Hen H8		Crofton Rd - Ch E9	
Albion Rd (NY331) - BS		Crofton Rd (CO178) - G8 F7	
Albion Rd (CO175) - BS		Crofton Rd (CO178) - G8 F7	
Albion Rd (CO175) - BS		Crofton Rd (CO178) - G8 F7	
Albion Rd (CO175) - BS		Crofton Rd (CO178) - G8 F7	
Albion Rd (CO175) - BS		Crofton Rd (CO178) - G8 F7	

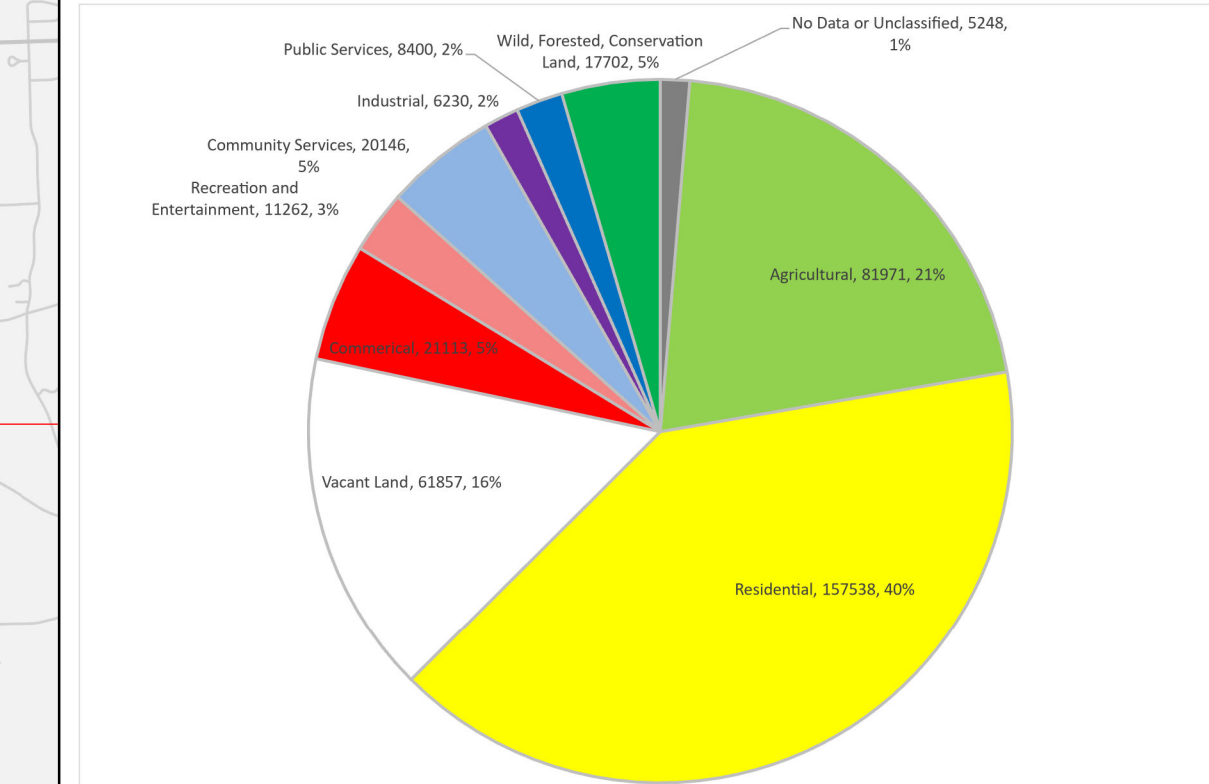


The Monroe County GIS Services Division uses the following sources for data: Aerial photography, tax data, and other publicly available data. This map is not intended to convey any specific information. Any use or duplication of this map is prohibited except by written permission of Monroe County.

Revised Date: 2/8/2023

Monroe County, New York Land Use Classification

This map was created using digital spatial data compiled by Monroe County GIS staff from a variety of sources. Land Use Classifications are shown as reported to the Office of Real Property Services by each municipality's assessor. Streams and water bodies were obtained from the United States Geological Survey. Street centerlines, including street name, and jurisdictional responsibilities, are maintained by the Monroe County GIS Services Division, using both aerial photography and tax data. Municipal boundaries are maintained by the Monroe County Real-Property Tax Services.



ADAM J. BELLO
COUNTY EXECUTIVE