



Monroe County Countywide Active Transportation Plan

Project Advisory Committee Meeting #3

October 25, 2022 – 11:30 AM-12:30 PM



Adam J. Bello
COUNTY EXECUTIVE

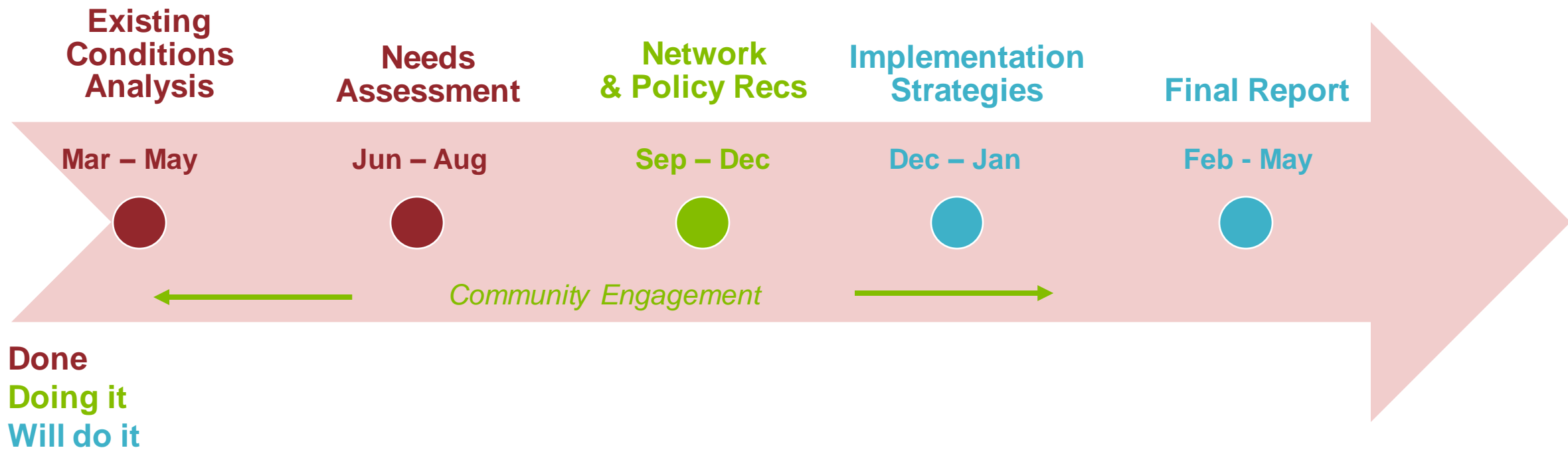




Agenda

TIME	AGENDA ITEMS
11:30-11:40	Welcome and Project Update
11:40-12:10	Preliminary Network & Scenario Development
12:10-12:15	Engagement Updates
12:15-12:30	Q&A, Next Steps

Schedule Update





Preliminary Network & Scenario Development

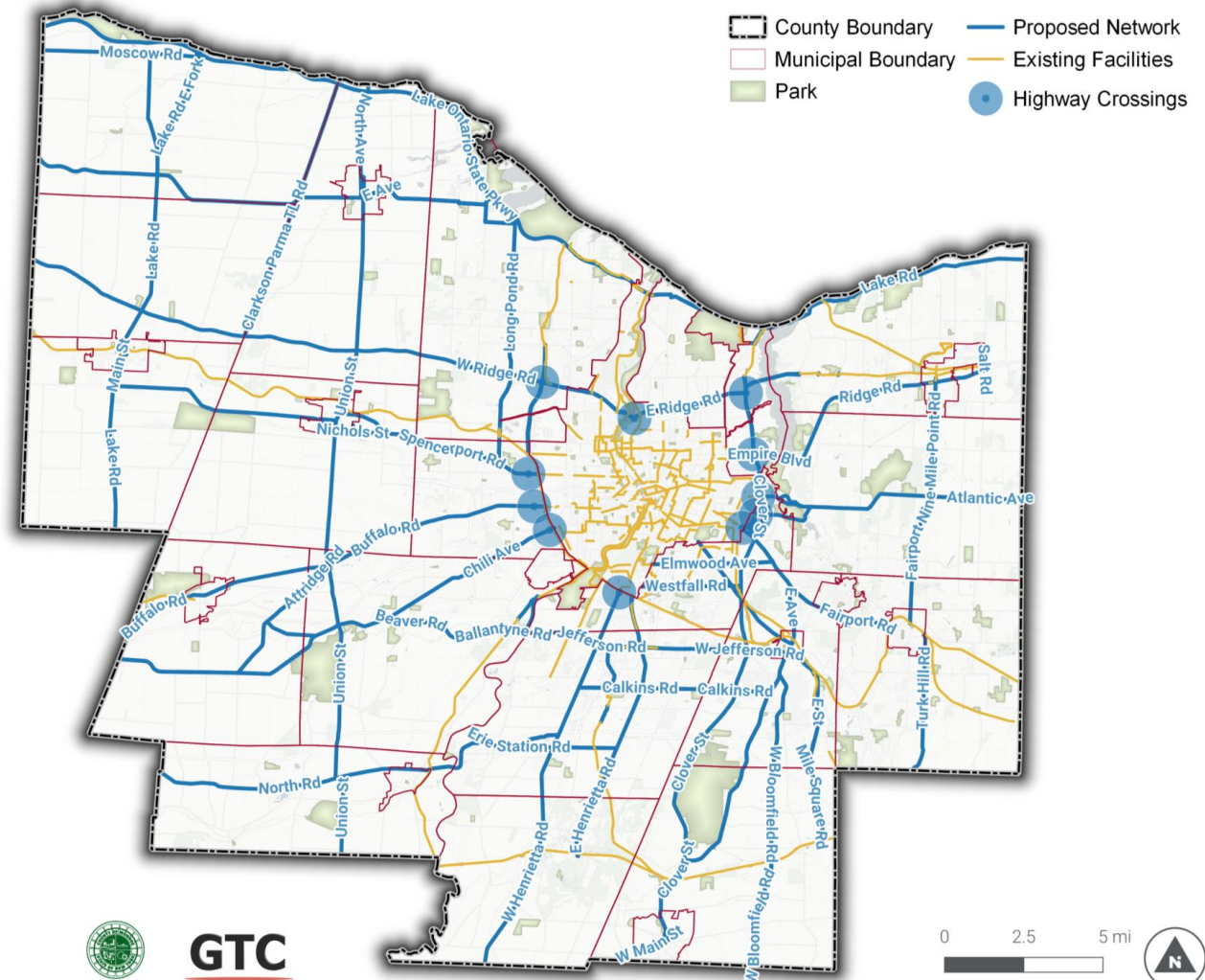




Preliminary Network

About the Preliminary Network

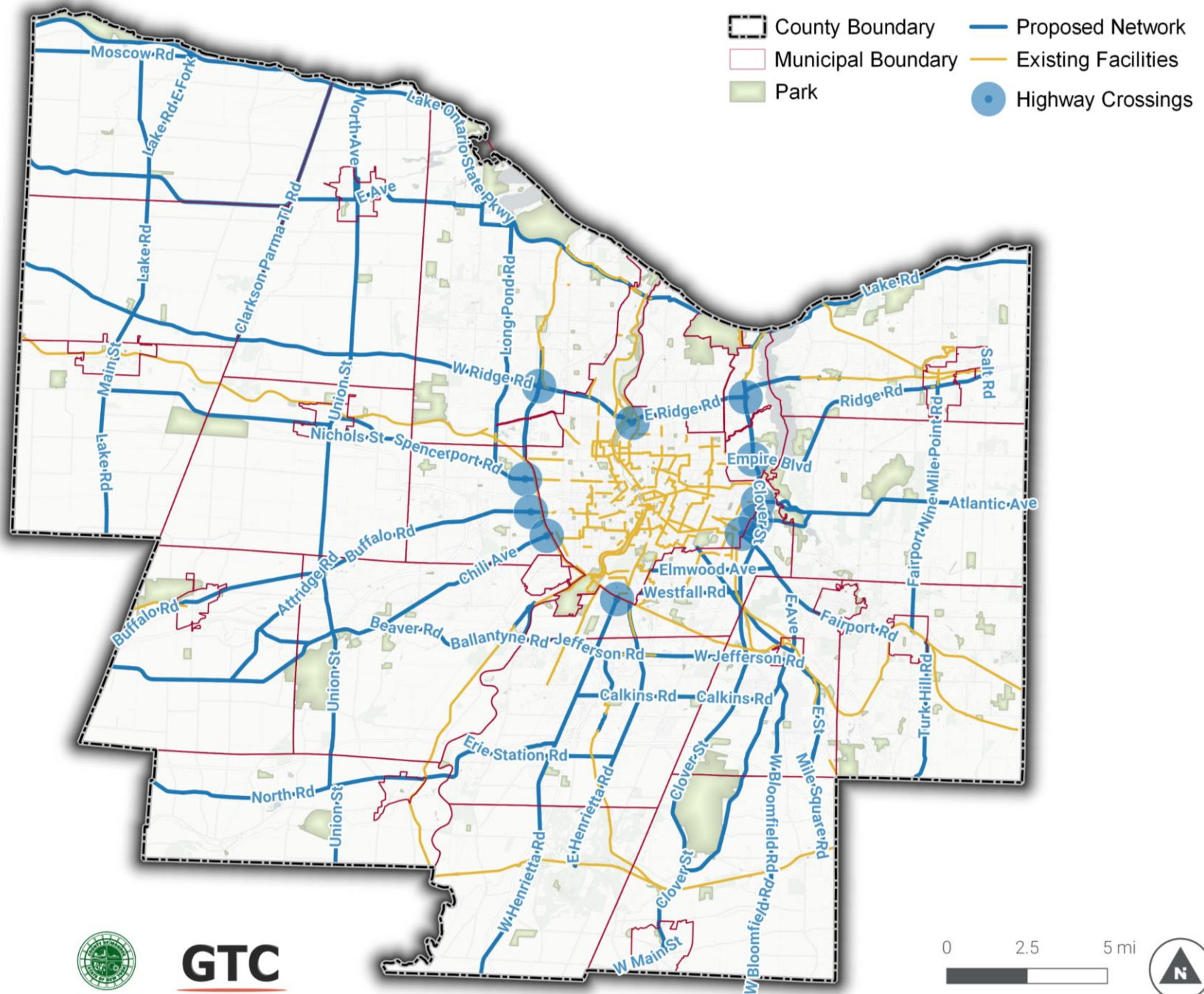
- Fill gaps and expand the existing network.
- **Aspirational** in scope – unconstrained by fiscal and other limitations.
- Focuses on **bicycle travel**.





About the Preliminary Network

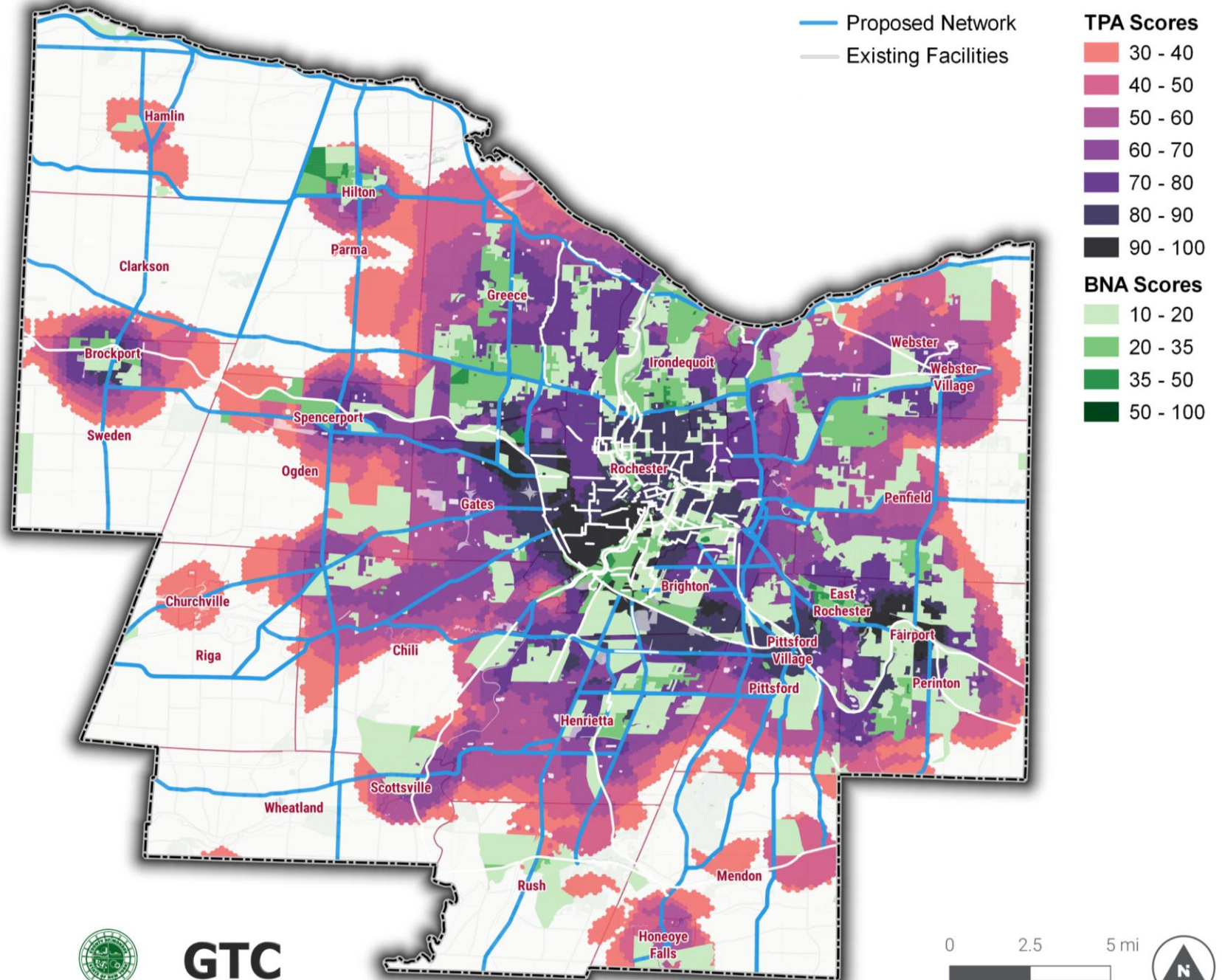
- Leverage existing active transportation infrastructure.
- Connect town and village centers outside of Rochester to each other.
- Overcome barriers created by interstate highways.





Network Building Blocks

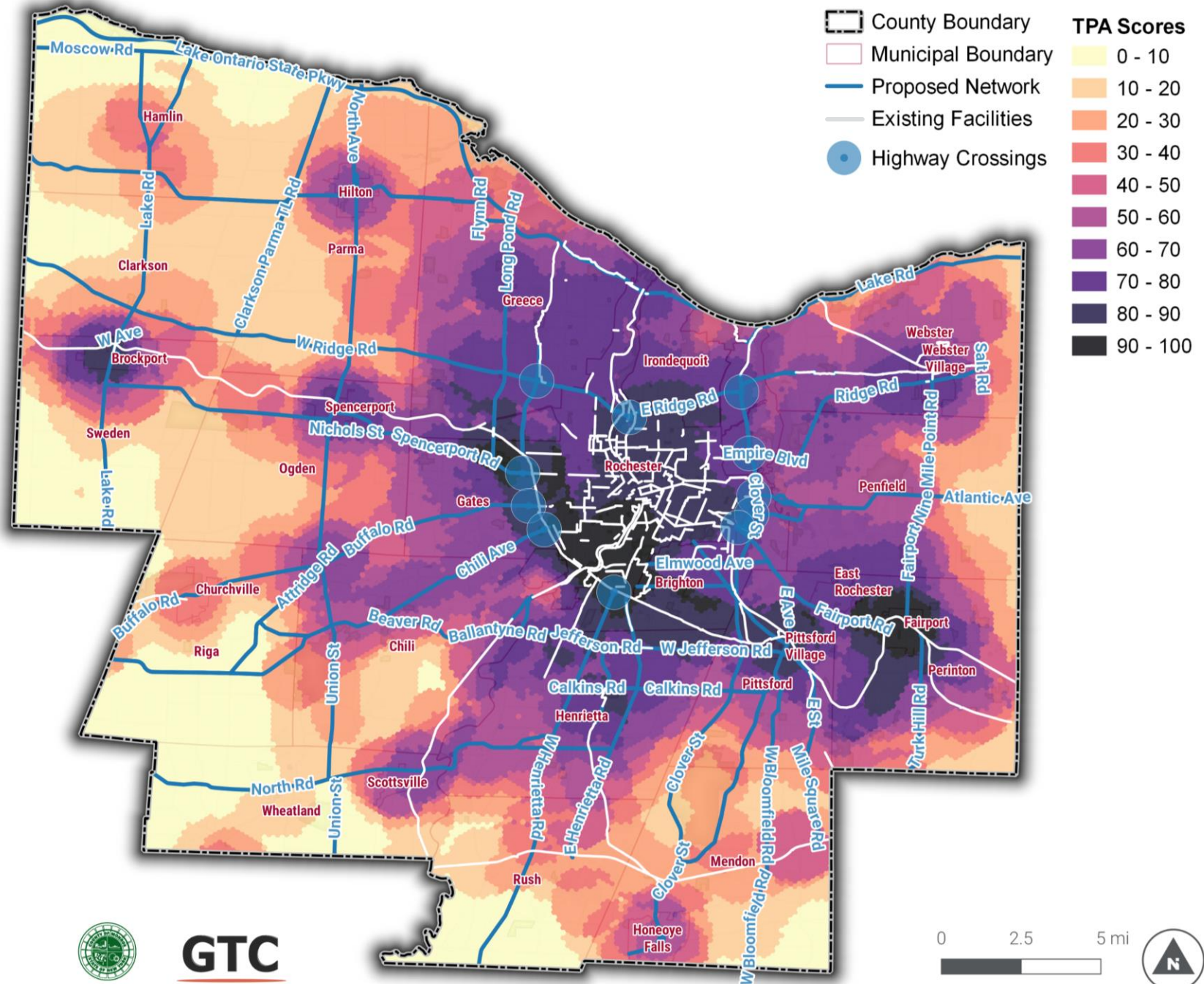
- **Level 1** – Identify population centers and how the county’s existing network connect to these areas.
- **Level 2** – Adjust proposed segments based on results from the Trip Potential and Bicycle Network analyses.
- **Level 3** – Consider crash data and public feedback as qualitative insight.





Trip Potential Analysis (TPA)

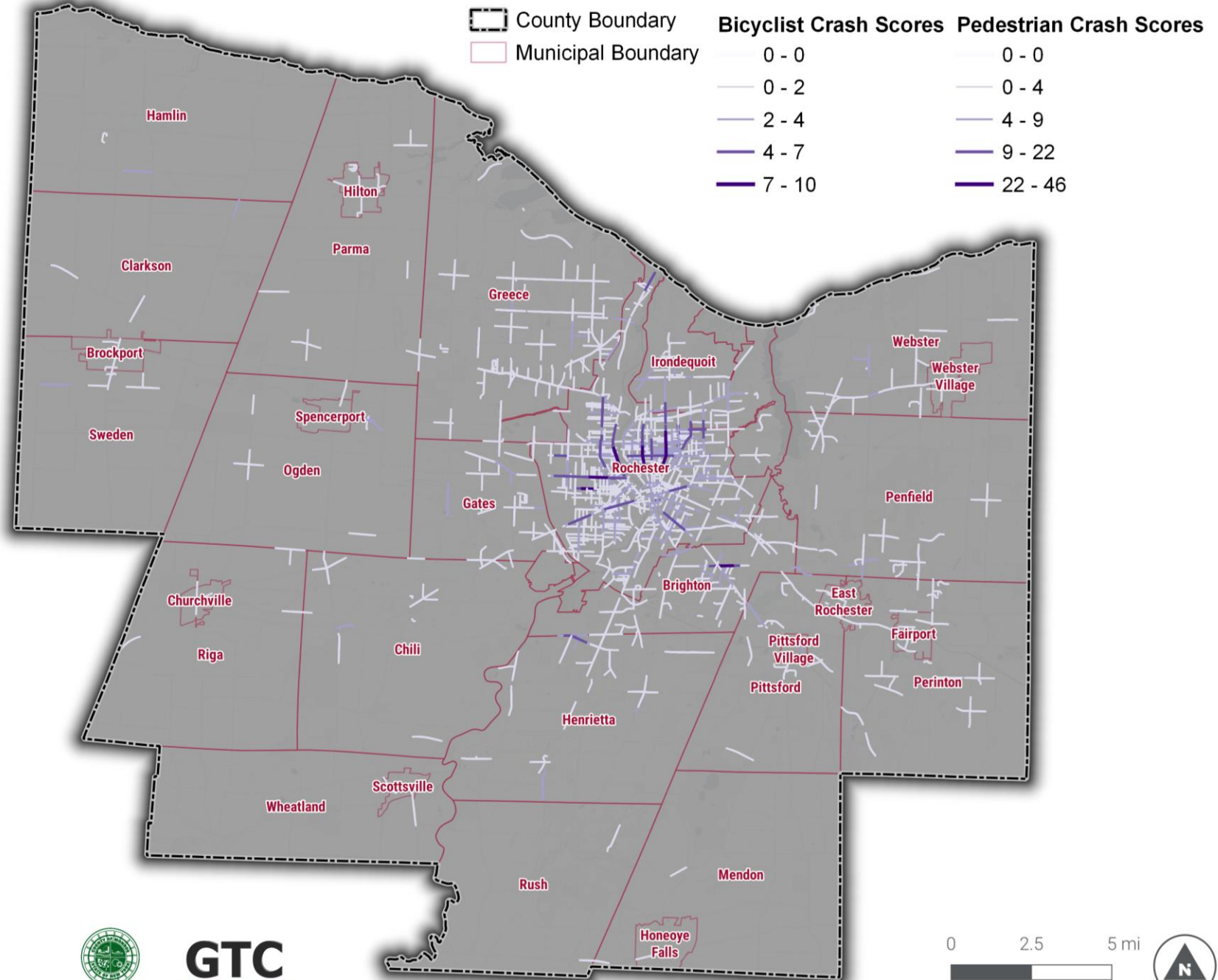
- The TPA predicts where people would most likely walk/bike.
- Highlights areas where enhanced pedestrian and bicycle infrastructure may serve more users.
- Populations centers as areas of high trip potential, as well as some areas between these nodes, particularly in suburban communities.





Bike & Ped Crash Analysis

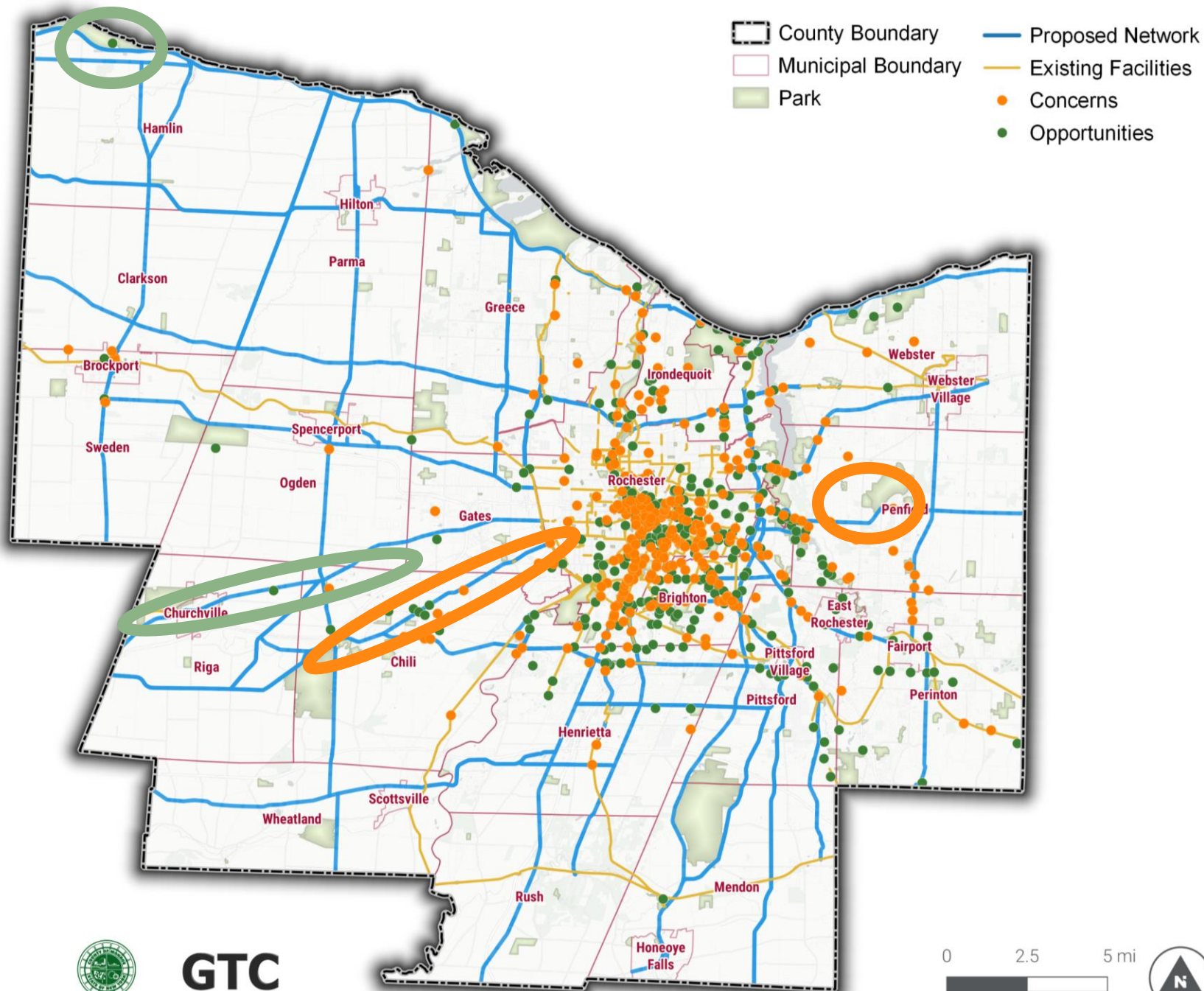
- Identifies patterns of bicycle and pedestrian crashes.
- Results are clustered in Rochester.
- More granular than proposed network.





Public Input & Feedback

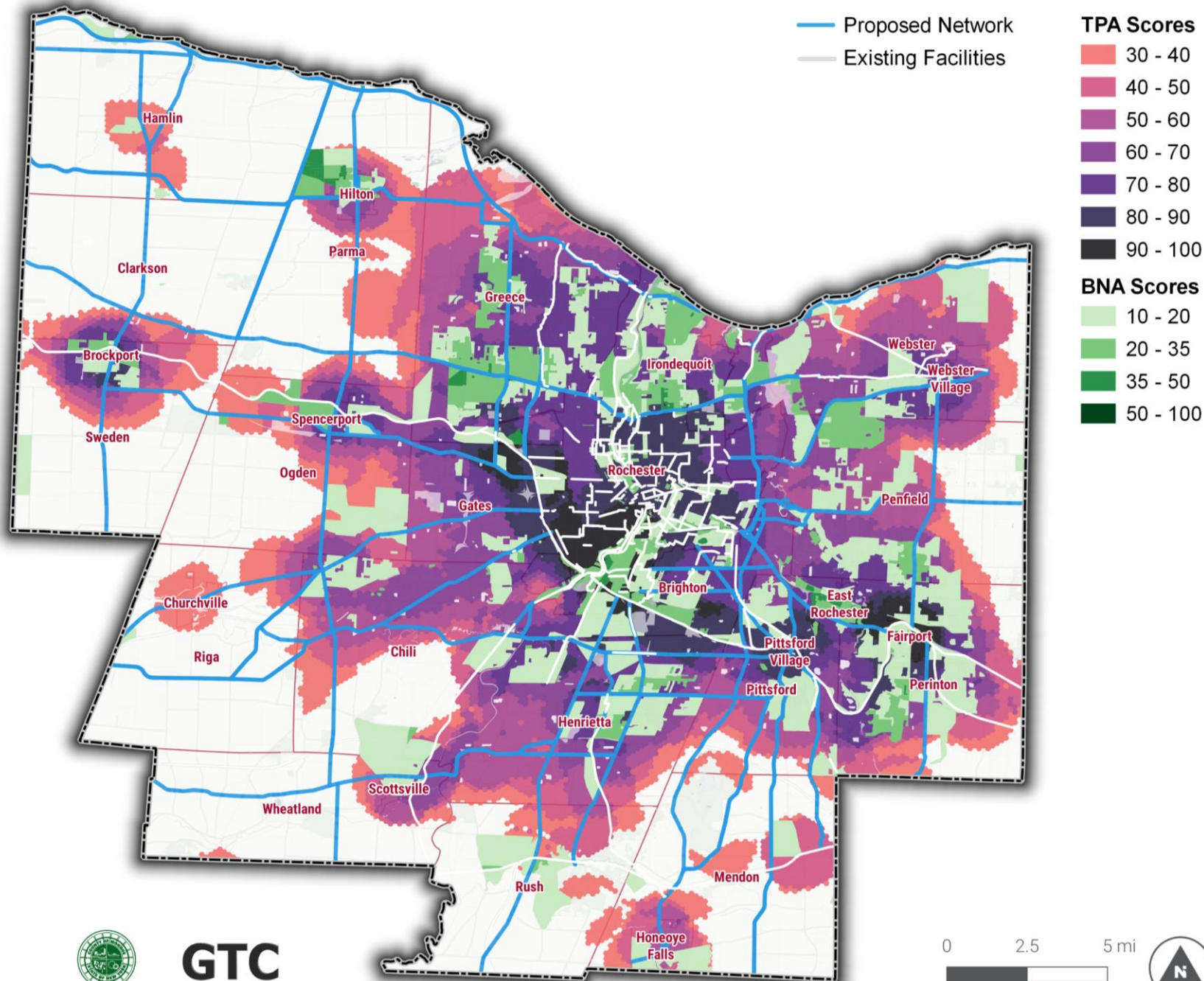
- “I wish Chili Ave was more bicycle and pedestrian friendly. It is an essential route to/from the city, and currently very unpleasant for biking/walking.”*
- “Trails in Harris Whalen Park do not allow bikes. Harris Hill Elementary is near here making it harder for kids in nearby neighborhoods to bike to school.”*
- “A protected, multi-use path or sidewalk connecting North Chili to Churchville along Buffalo Road would allow safe movement between these communities, and a safe travel path to the Churchville-Chili School District property.”*
- “Hamlin Beach State Park is great to bike around, but you have to go on parkway ramps. It would be great if there was some alternate way to get to the park – a trail or protected bike lane – that uses the underpass under Lake Ontario St Pkwy.”*





Network Building Blocks

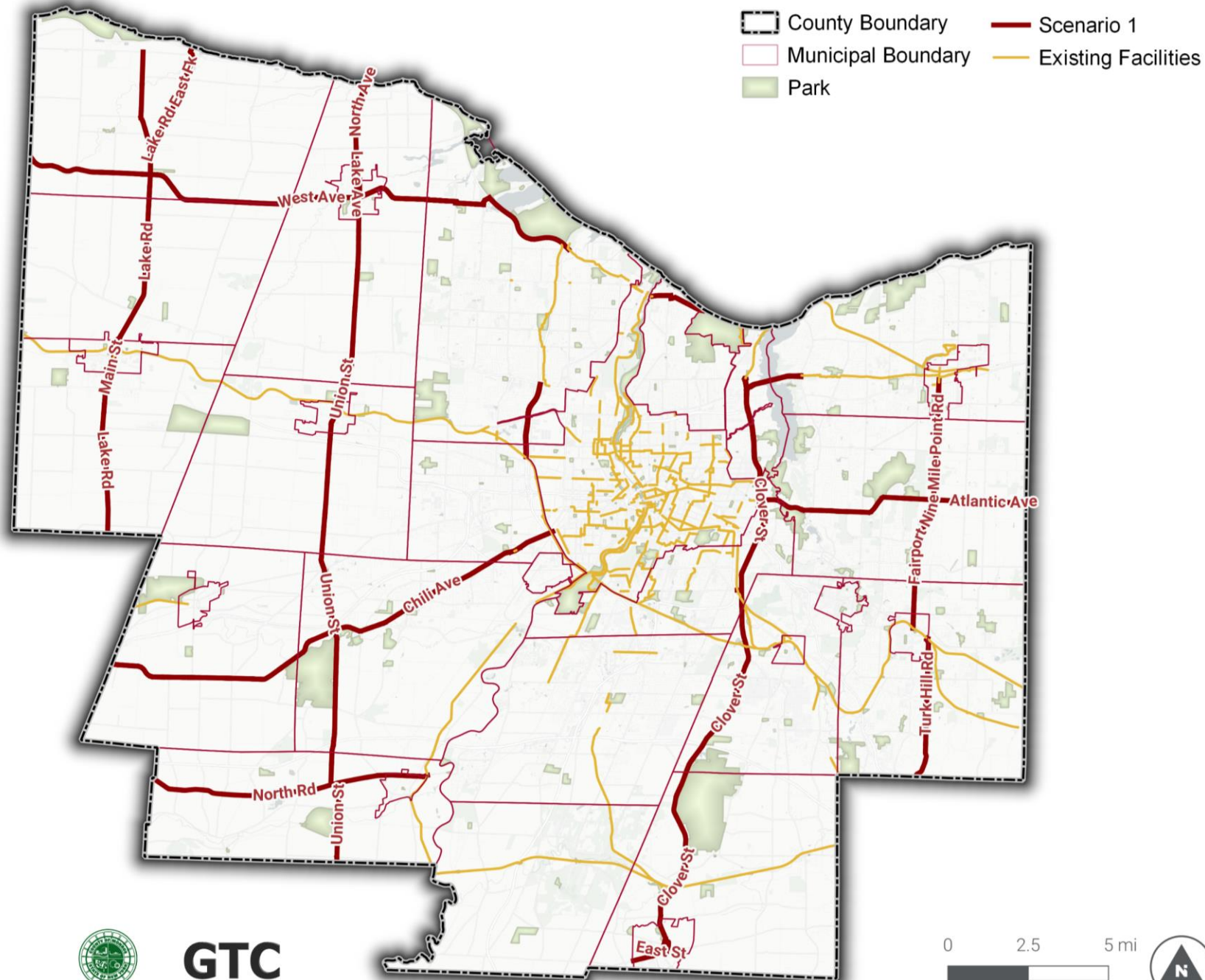
- Identify population centers and how the county's existing network connect to these areas.
- Adjust proposed segments based on results from the Trip Potential and Bicycle Network analyses.
- Consider crash data and public feedback as qualitative insight.





Scenario Development

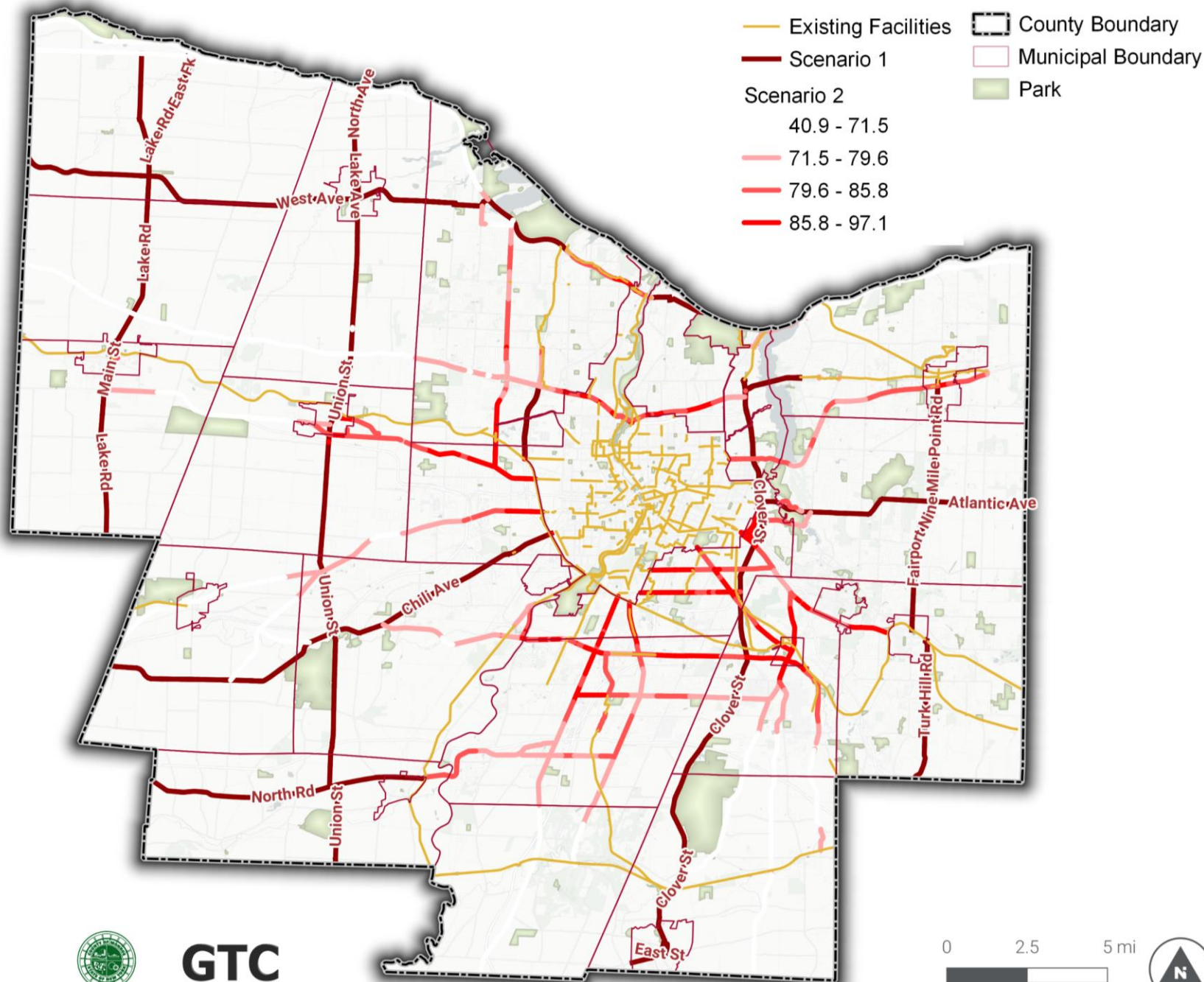
- **Goal #1** – Build a network that serves the broadest cross section of the population possible (**coverage**).
- **Goal #2** – Emphasize connections to priority populations that rely on active transportation (**need**).
- Two approaches to network implementation for Monroe County:
 1. **Scenario 1: High Coverage Network**
 2. **Scenario 2: High Need Network**





Scenario Development

- **Goal #1** – Build a network that serves the broadest cross section of the population possible (**coverage**).
- **Goal #2** – Emphasize connections to priority populations that rely on active transportation (**need**).
- Two approaches to network implementation for Monroe County:
 1. **Scenario 1: High Coverage Network**
 2. **Scenario 2: High Need Network**



Questions?

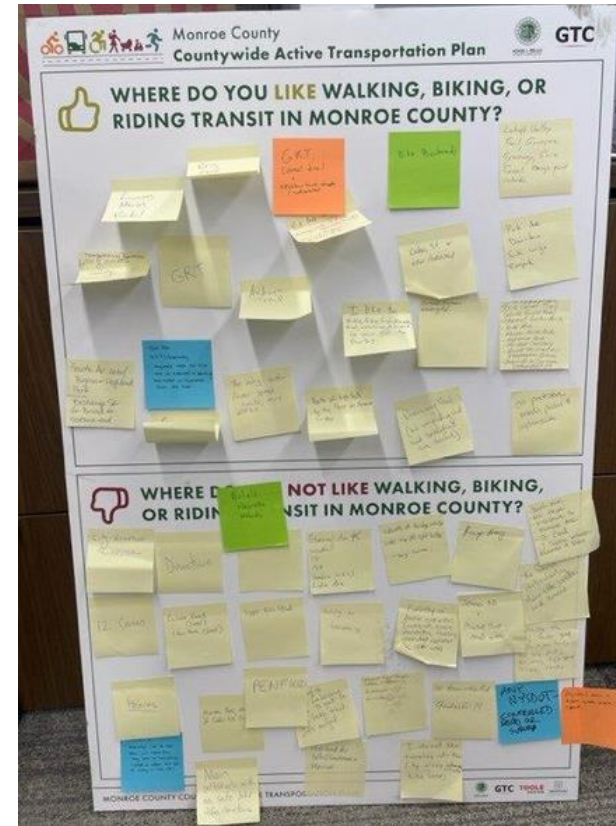


Engagement Updates

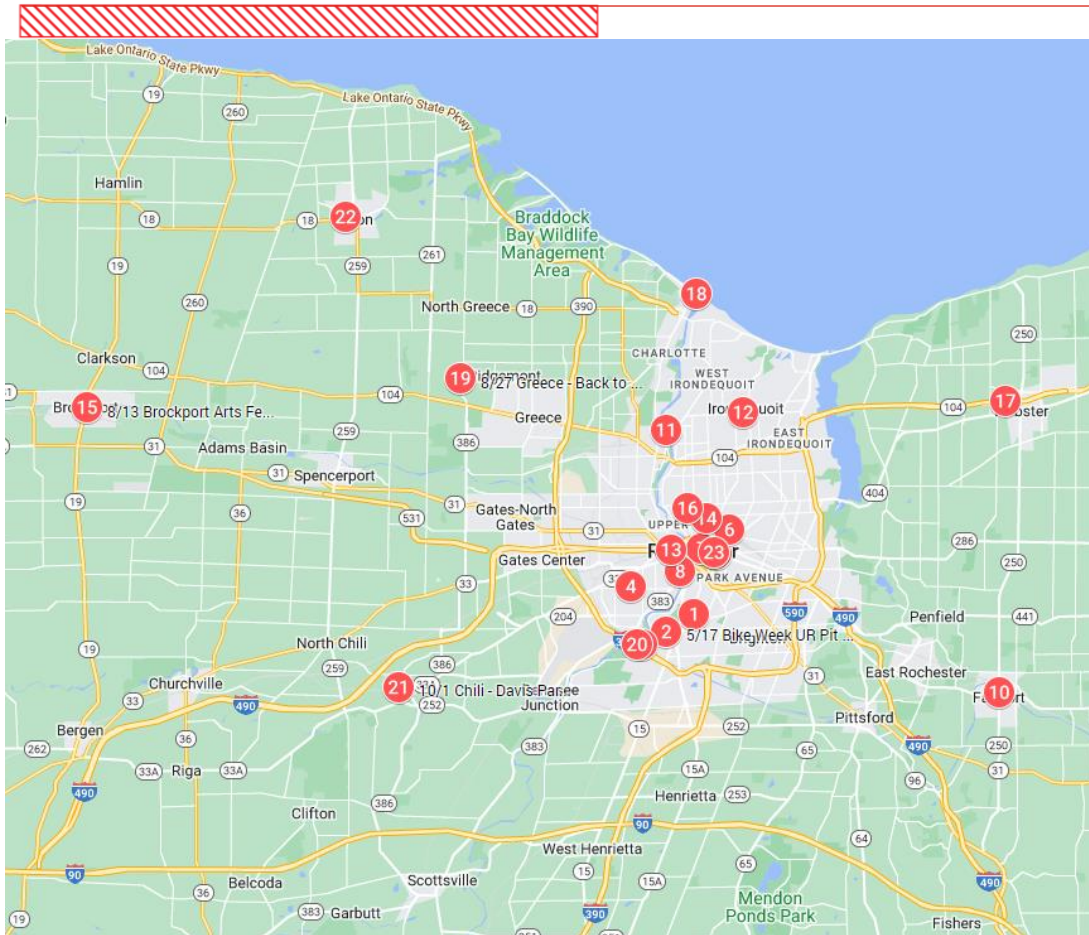


Public Workshop #1

- A joint public workshop for the Countywide Active Transportation Plan (CATP) and Comprehensive Plan Update
- Approximately 50 attendees ~ received 500+ inputs for the CATP



Pop-up Events – Past and Upcoming



Past Events:

- 1) 5.7 & 8 : Lilac Festival
- 2) 5/17 Bike Week UR Pit Stop
- 3) 5/20 Bike Week Union & East Pit Stop
- 4) 5/21 Arnett Bike Clinic
- 5) 6/16 Rochester Street Film
- 6) 6/18 Rochester Public Market
- 7) 6/20 Jazz Festival Liberty Pole
- 8) 7/9 Corn Hill Festival
- 9) 7/10 Pride Picnic Genesee Valley Park
- 10) 7/16 Fairport Farmers Market
- 11) 7/22 ZooBrew at Seneca Park Zoo
- 12) 8/11 Irondequoit Farmers Market
- 13) 8/5 Puerto Rican Festival
- 14) 8/6 Jordan's Front Porch Festival
- 15) 8/13 Brockport Arts Festival
- 16) 8/21 The International Plaza
- 17) 8/24 Webster An Evening in the Park
- 18) 8/26 Salute to Seniors -Senior Picnic
- 19) 8/27 Greece - Back to School Bash
- 20) 9/24 Rochester off-road Cycle
- 21) 10/1 Chili Davis Park Chili's Bicentennial
- 22) 10/1-2 Hilton Apple Fest
- 23) 10/19 Street Film #2

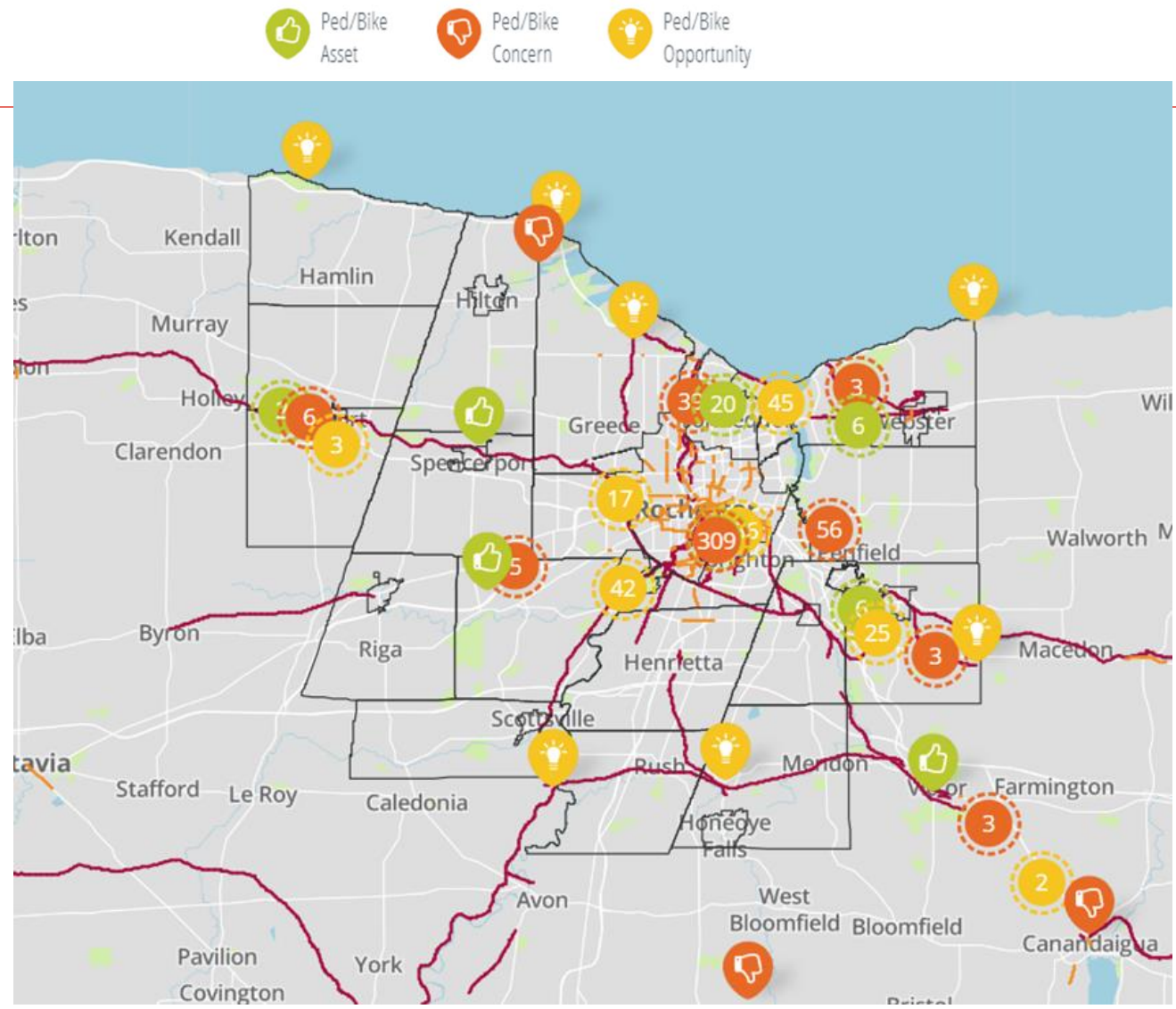
Upcoming Events (TBD):

- ROC Holiday Village, 12/2-23
- Penfield Holiday, 12/10
- Monroe County Winterfest, 1/29



Online Input

- Total Comments/Pins: 946 (472 in June)
 - Assets: 115
 - Concerns: 431
 - Opportunities: 400
- Total Up-votes: 3,763
- Total Down-votes: 65



Questions?



Next Steps

- Finalize network and scenarios.
- Revise facility toolkit and program and policy recommendations, share with PAC.
- Begin Implementation Strategies task.
- **PAC: provide feedback on Preliminary Network Development Memo by 11/8.**

Thank You!

- Yixuan Lin – YixuanLin@monroecounty.gov
- Michael Blau – mblau@tooledesign.com

Next Meeting: December or January