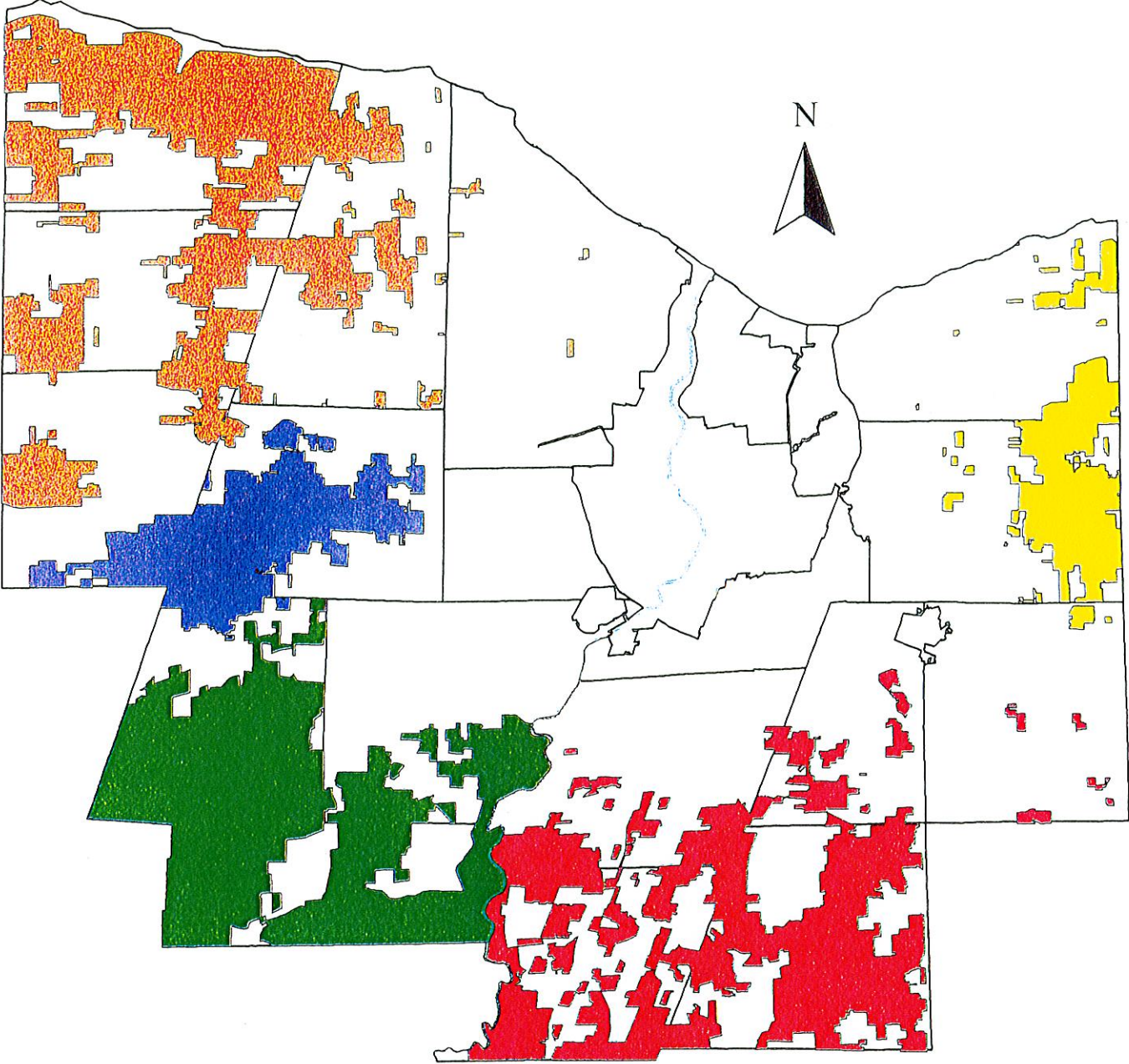


Agricultural Districts



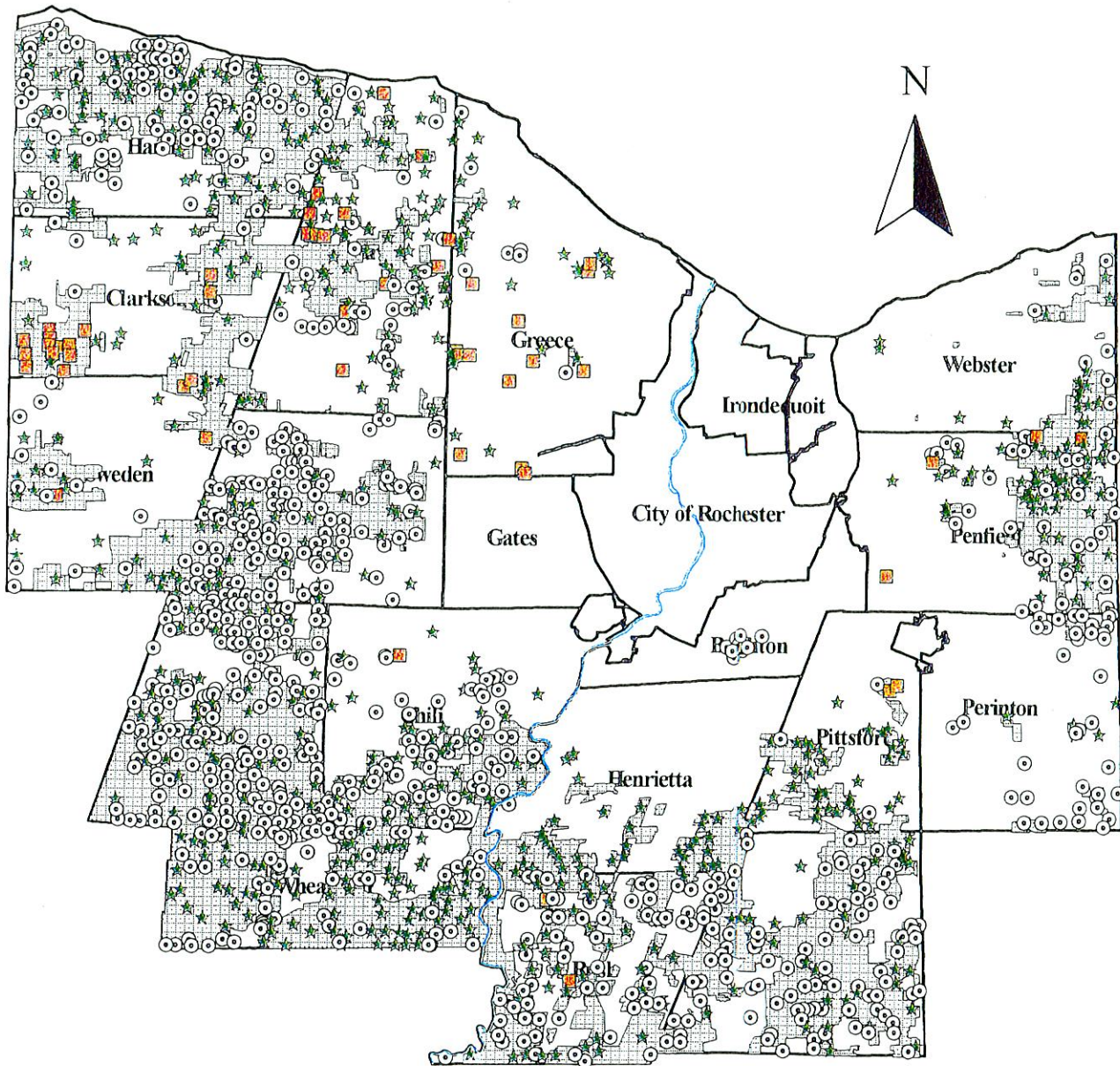
Legend

-  Midwest Agricultural District #1
-  Southwest Agricultural District #2
-  Northeast Agricultural District #3
-  Southeast Agricultural District #4
-  Northwest Agricultural District #5

 Genesee River

Map created by Monroe County
Department of Planning & Development: 1998

Farmland Under Conversion Pressure



4 0 4 8 Miles

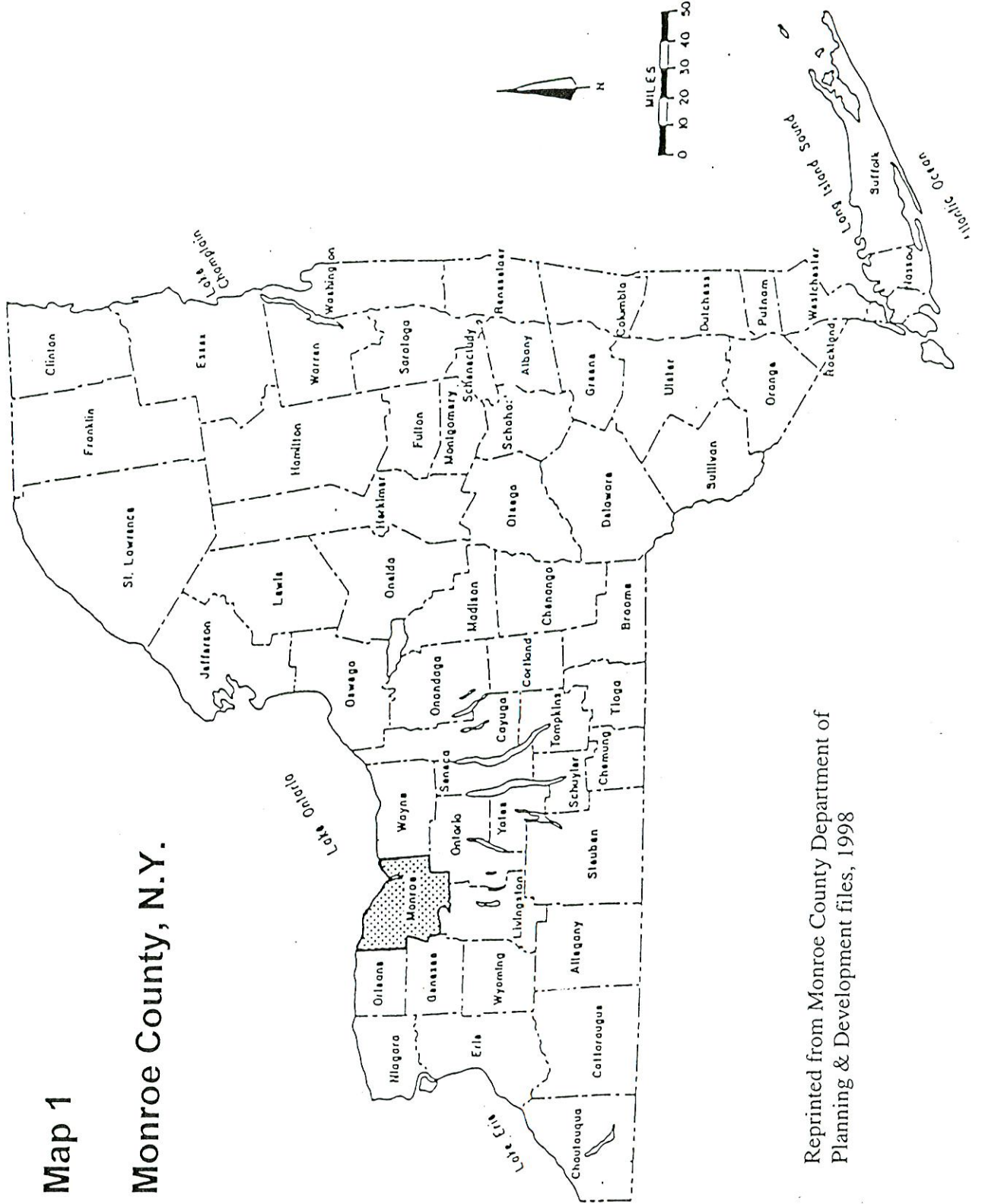
Legend

- Agricultural Vacant Land
- ★ Field Crop Farms
- Truck Crop Farms
- ▨ Agricultural District
- ~ Genesee River

Map Created By: Monroe County Dept. of Planning and Development, July 1998
 Data Source: July, 1997 RPS Parcel Records Maintained by RPTS.
 Monroe County does not warrant the correctness or accuracy of this data, or assume any responsibility for any explicit or implied uses.

Map 1

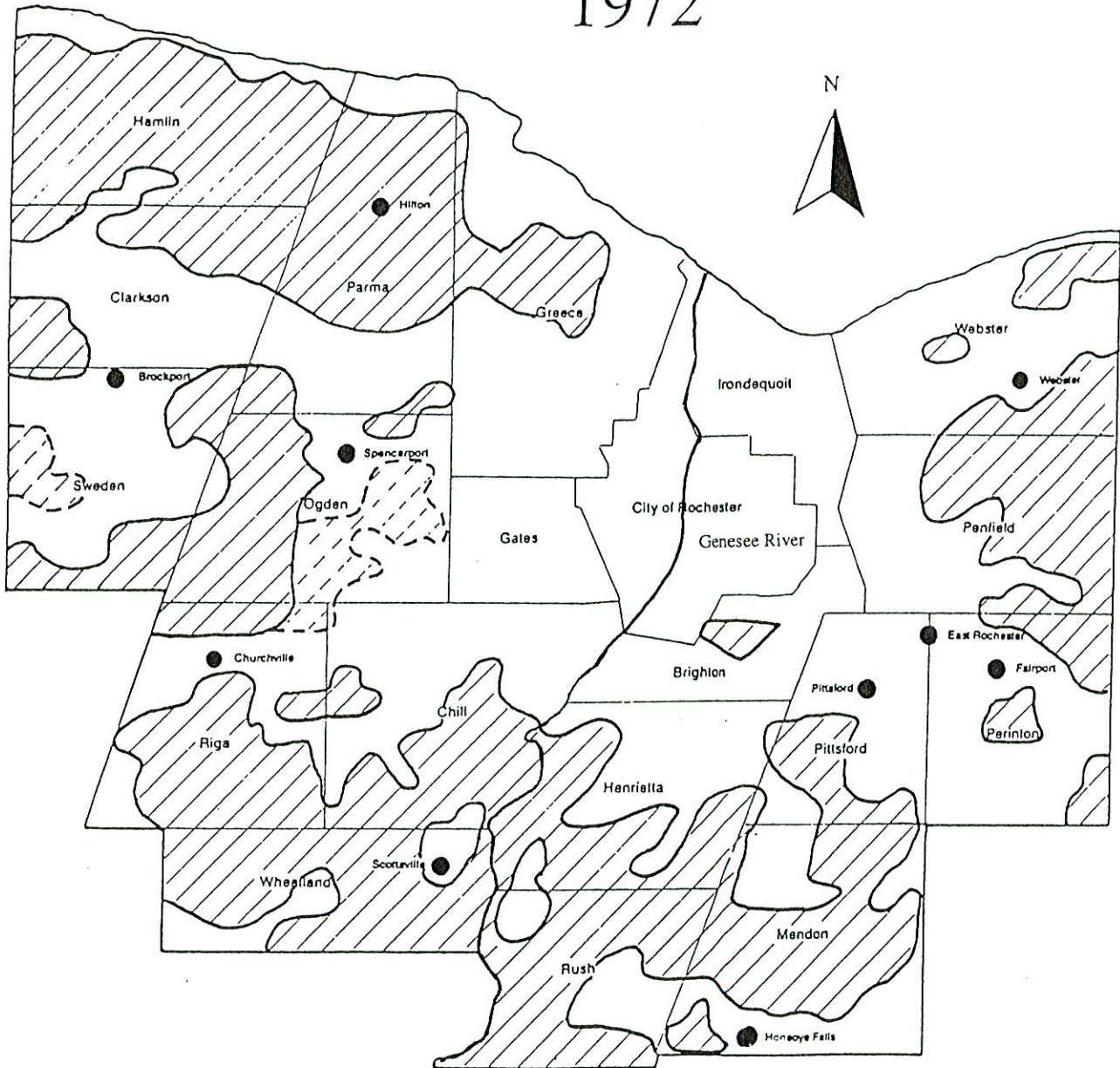
Monroe County, N.Y.



Reprinted from Monroe County Department of Planning & Development files, 1998

Map 2

Important Farmlands Map 1972

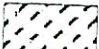


Not to Scale

Legend

Viability

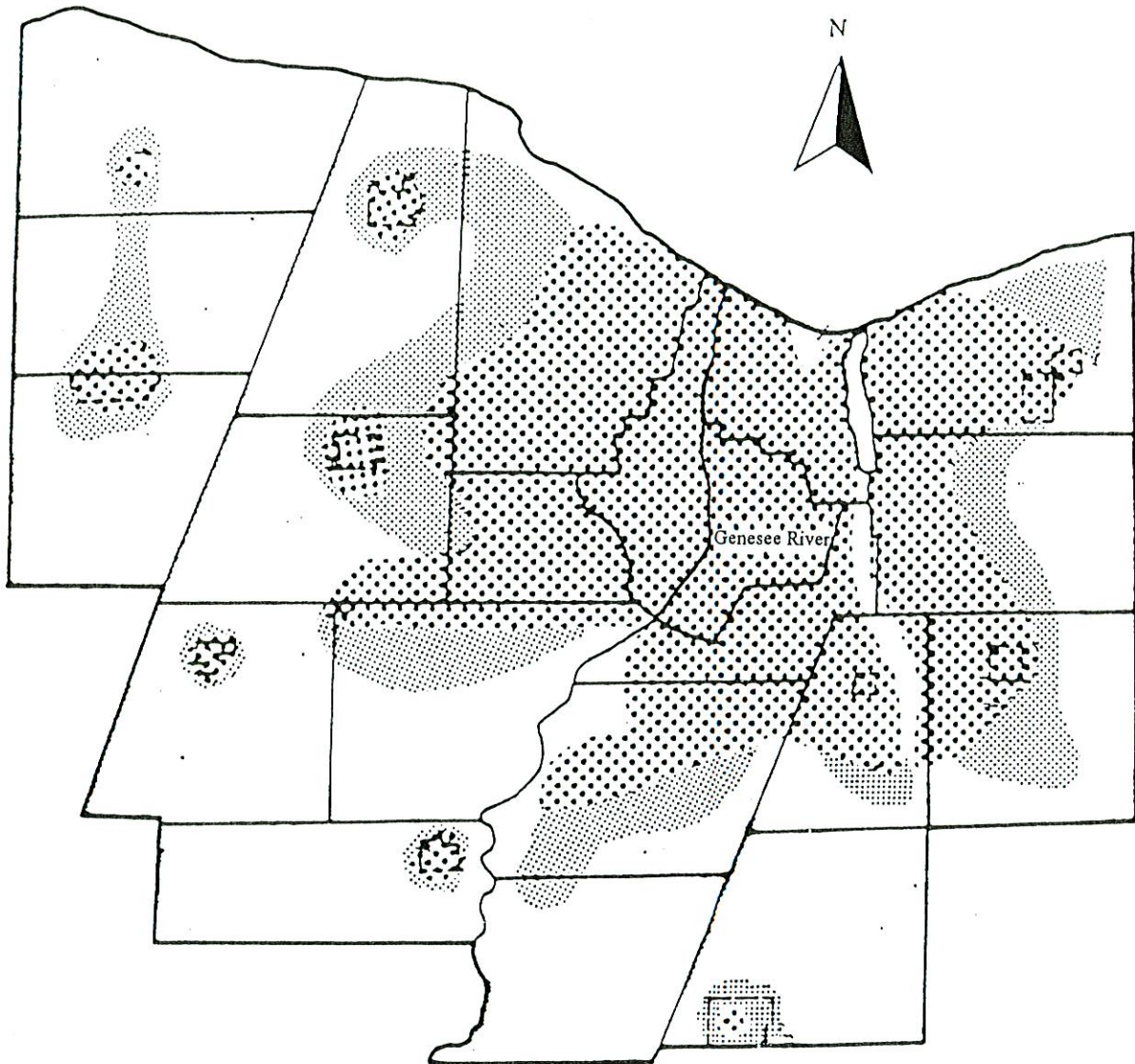
 High

 Medium

Map created by Monroe County Department of Planning and Development, 1998, based on data in "Agriculture and Food Industry, Draft Plan Element with Policy Options", Monroe County Department of Planning, 1988, p.29, and Linton and Conklin, 1972.



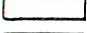

Map 3

General Development Plan



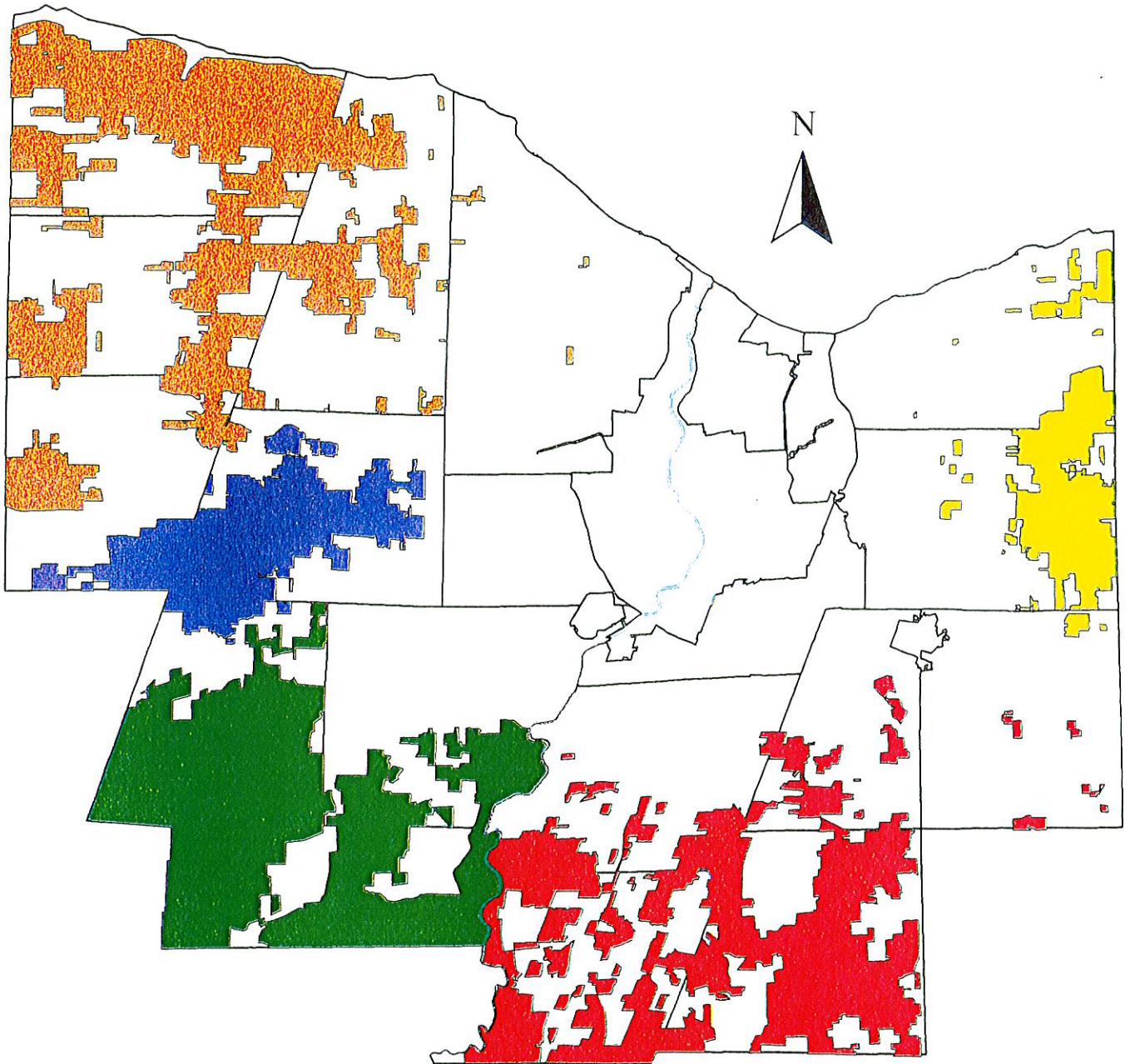
Not To Scale

Legend



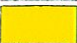


-  Developed Area, 1975
-  Development Area, 1975 - 2000
-  Farmland Area
-  Rural Nonfarm Area

Reprinted from "Land Use, A Policy Element of the County Comprehensive Development Plan", Monroe County Department of Planning, 1979a.

Map 4 Agricultural Districts



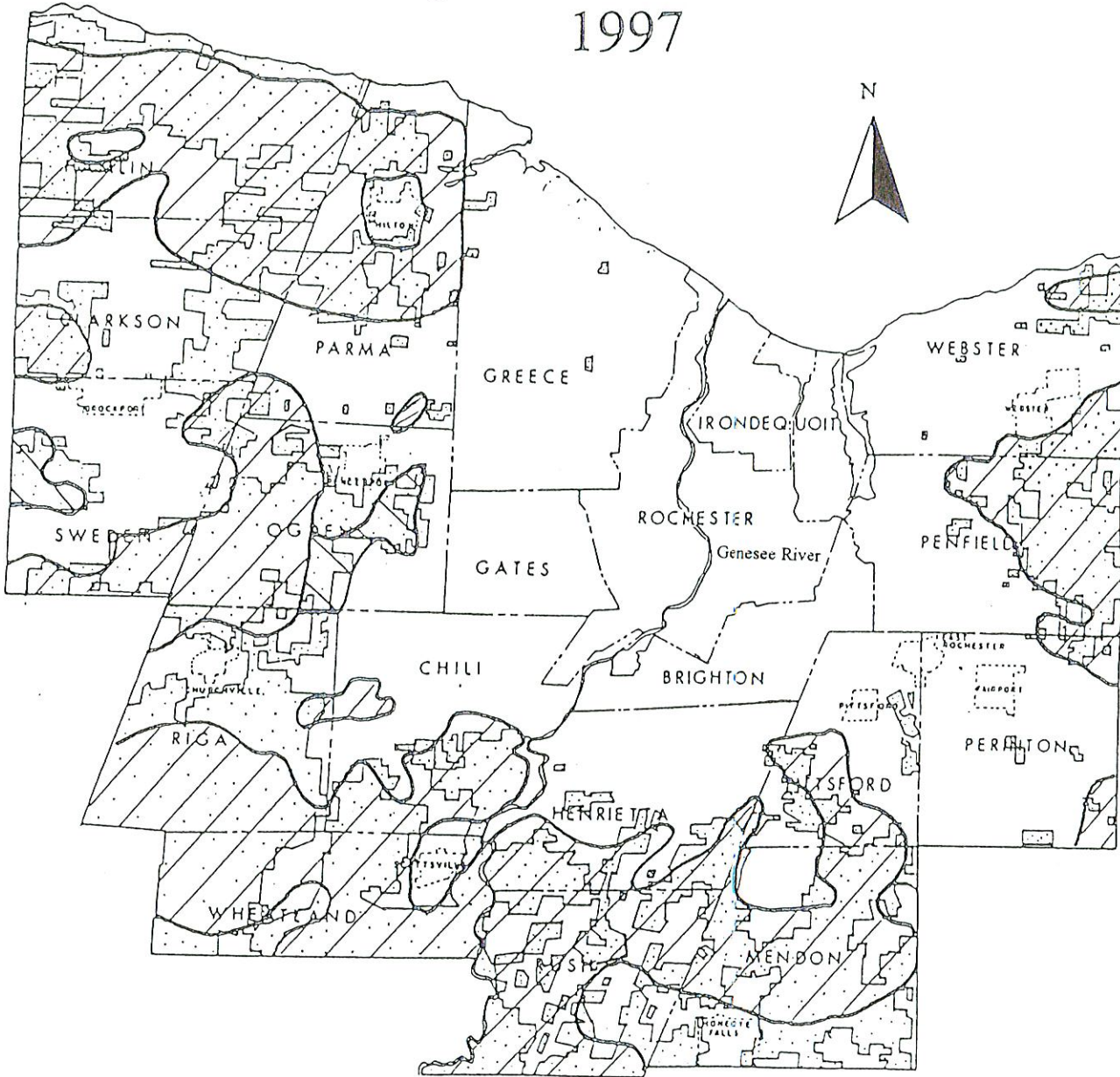
Legend

-  Midwest Agricultural District #1
-  Southwest Agricultural District #2
-  Northeast Agricultural District #3
-  Southeast Agricultural District #4
-  Northwest Agricultural District #5

 Genesee River


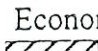


Map 5

Economic Viability of Farm Areas & Agricultural Districts 1997



Not to Scale

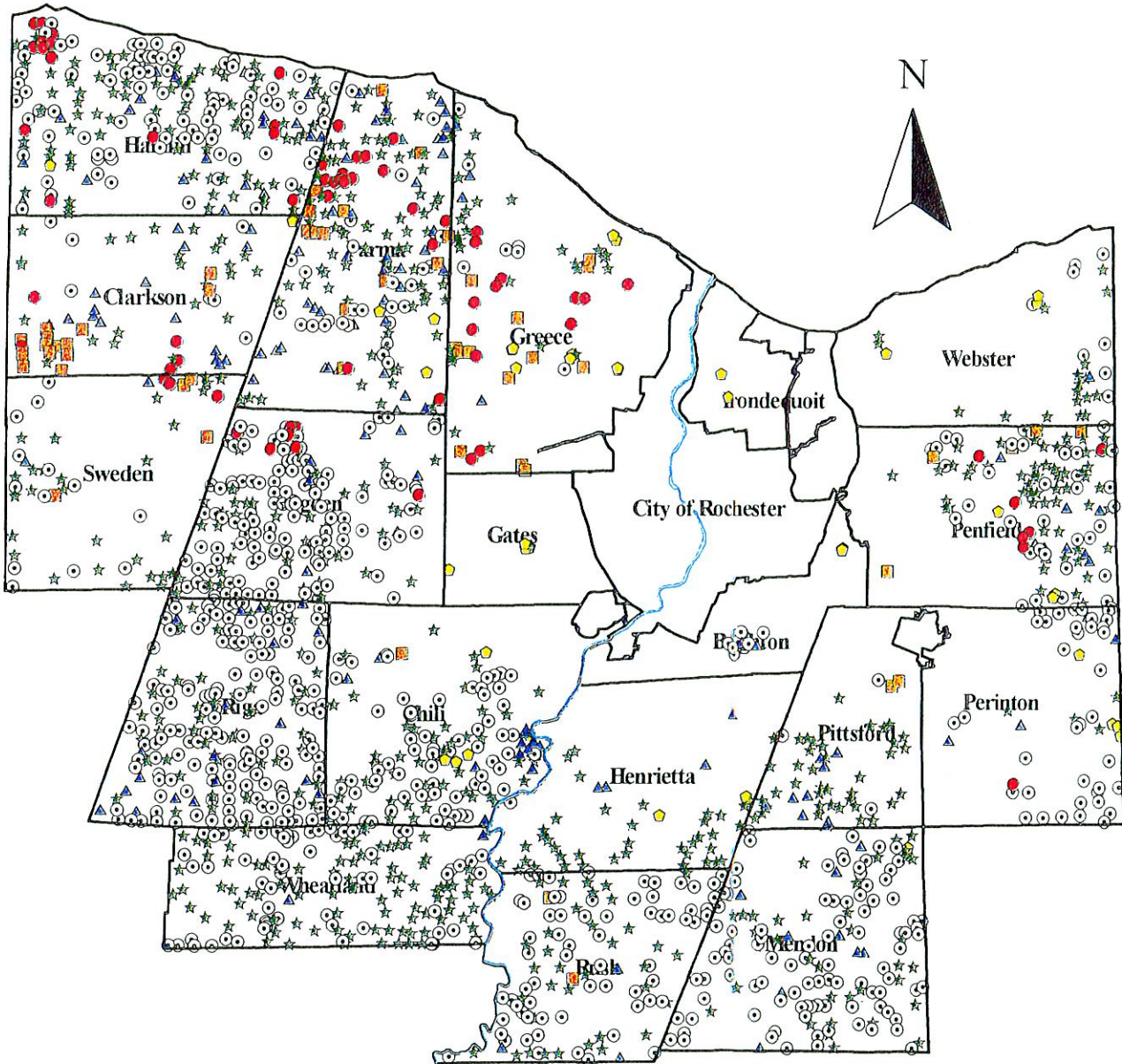
Legend

-  Agricultural District
-  Economic Viability
-  High
-  Medium

Map created by Monroe County Department of Planning and Development, 1998, based on data in "Agriculture and Food Industry, Draft Plan Element with Policy Options", Monroe County Department of Planning, 1988, p.30, and Linton and Conklin, 1972 (economic viability areas have been modified to reflect development).

Map 6

Distribution of Farms



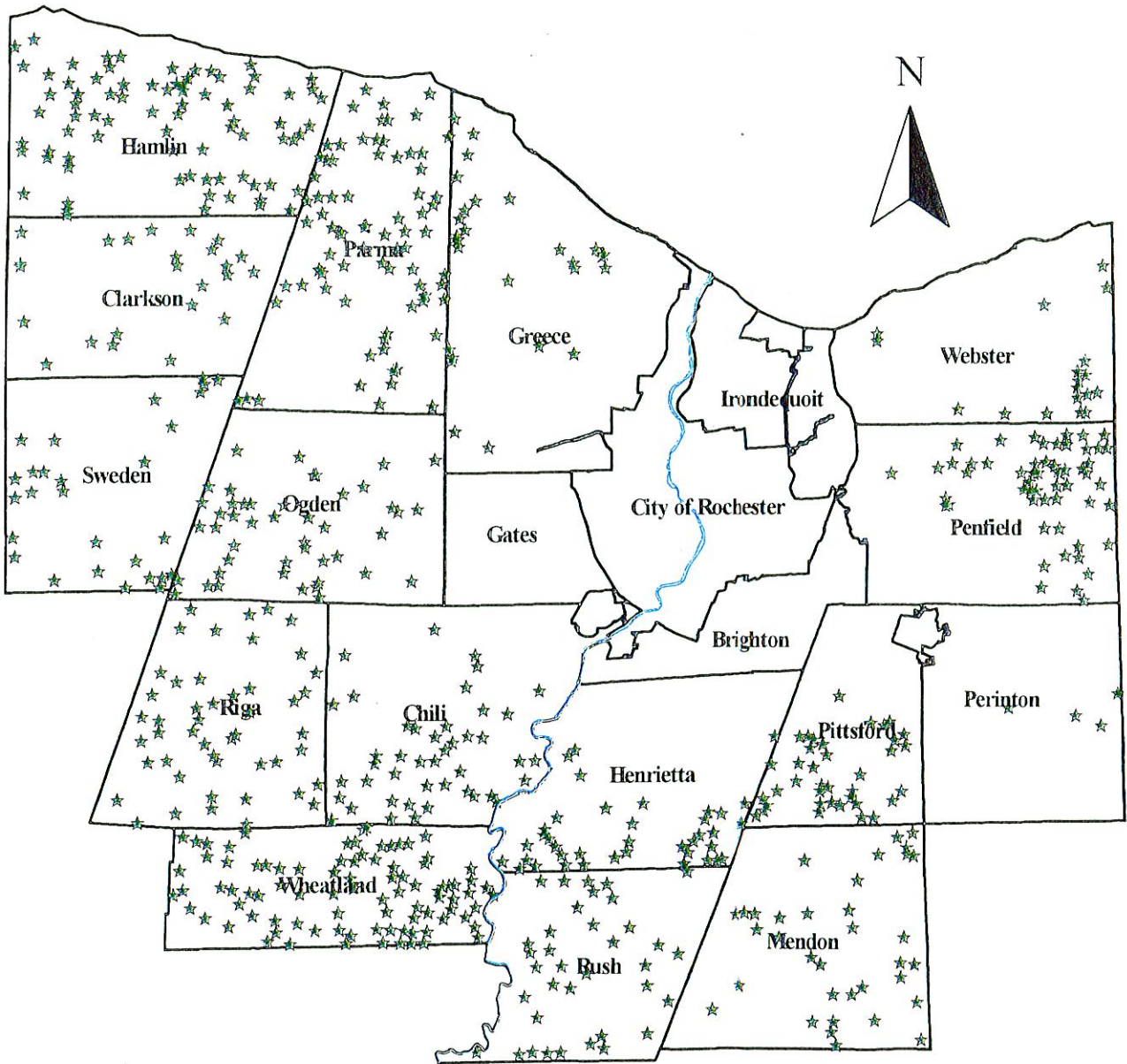
Legend

- Percent of Total Agricultural Acreage by Commodity
- ★ Field Crop Farms 43.28%
 - Agricultural Vacant Land 39.01%
 - ▲ Livestock & Products Farms 10.19%
 - Orchard & Fruit Crop Farms 3.44%
 - Truck Crop Farms 3.22%
 - Specialty Farms .86%
 - ~ Genesee River

Map Created By: Monroe County Dept. of Planning and Development, July 1998
 Data Source: July, 1997 RPS Parcel Records Maintained by RPTS.
 Monroe County does not warrant the correctness or accuracy of this data, or assume any responsibility for any explicit or implied uses.

Map 7

Field Crop Farms



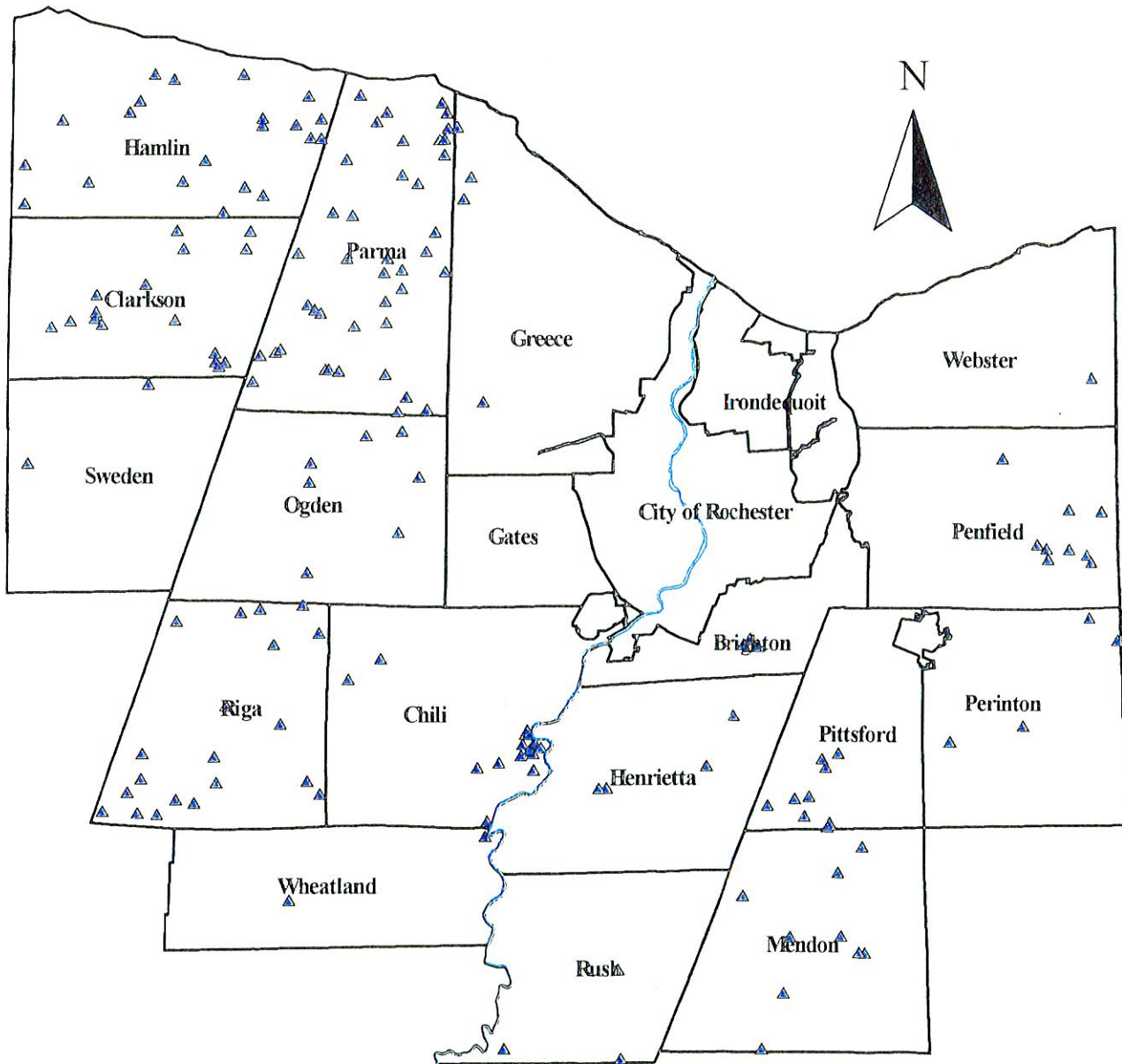
Legend

- ★ Field Crop Farms
- ~ Genesee River

Map Created By: Monroe County Dept. of Planning and Development, July 1998
Data Source: July, 1997 RPS Parcel Records Maintained by RPTS.
Monroe County does not warrant the correctness or accuracy of this data, or assume any responsibility for any explicit or implied uses.

Map 8

Livestock & Products Farms



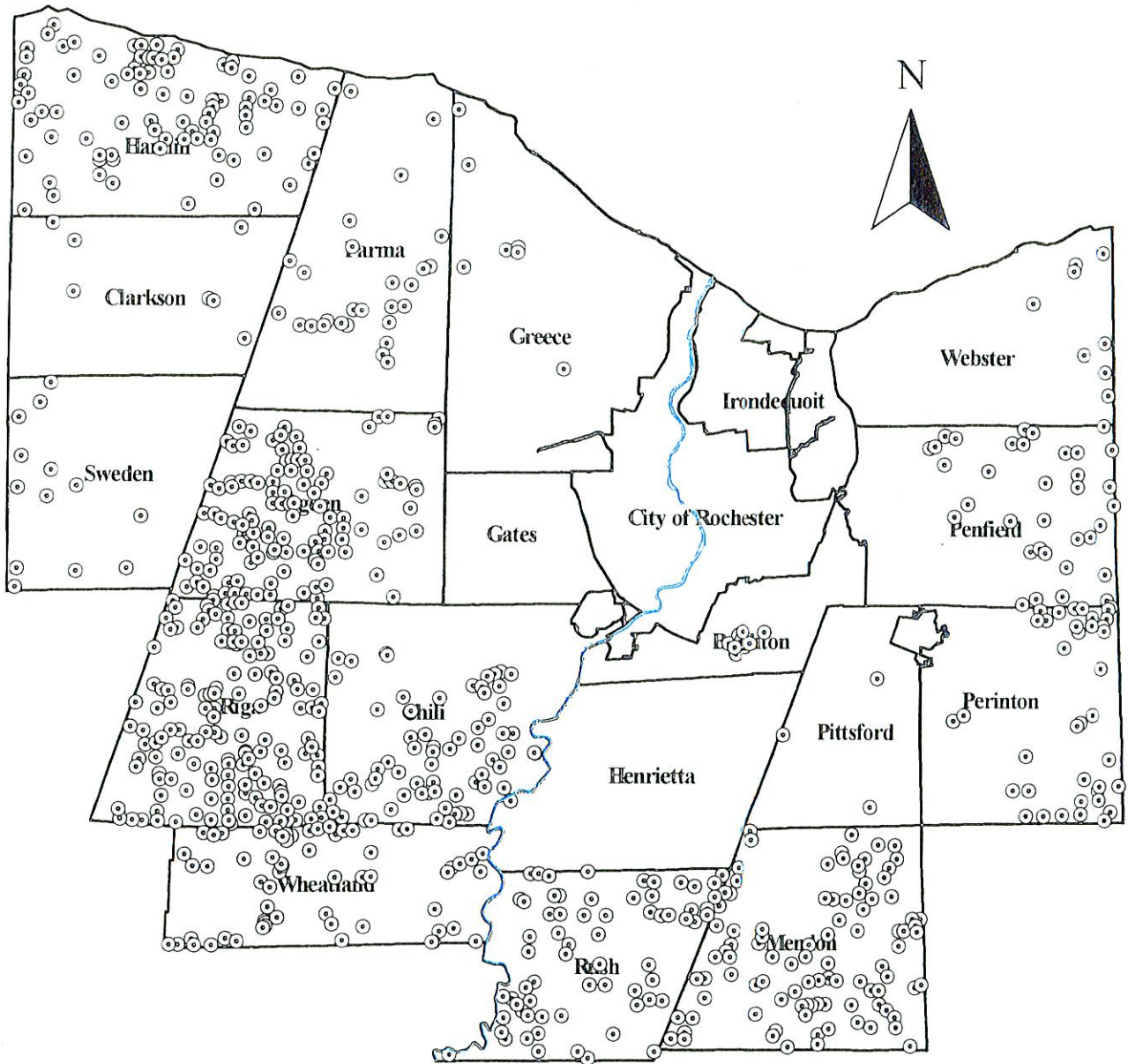
Legend

- ▲ Livestock & Products Farms
- ~ Genesee River

Map Created By: Monroe County Dept. of Planning and Development, July 1998
Data Source: July, 1997 RPS Parcel Records Maintained by RPTS.
Monroe County does not warrant the correctness or accuracy of this data, or assume any responsibility for any explicit or implied uses.

Map 9

Agricultural Vacant Land



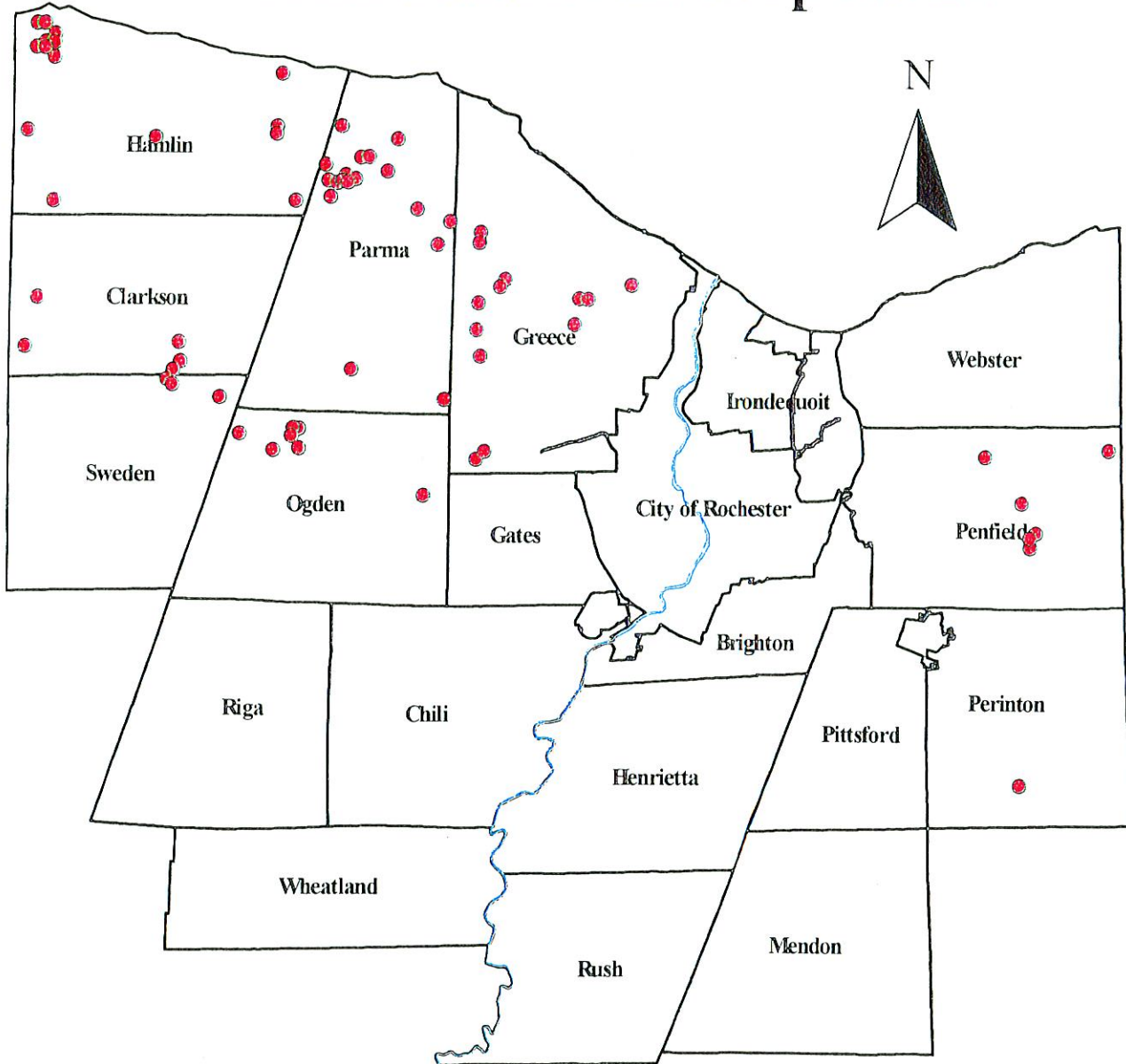
Legend

- Agricultural Vacant Land
- ~ Genesee River

Map Created By: Monroe County Dept. of Planning and Development, July 1998
Data Source: July, 1997 RPS Parcel Records Maintained by RPTS.
Monroe County does not warrant the correctness or accuracy of this data, or assume any responsibility for any explicit or implied uses.

Map 10

Orchard and Fruit Crop Farms



4 0 4 8 Miles

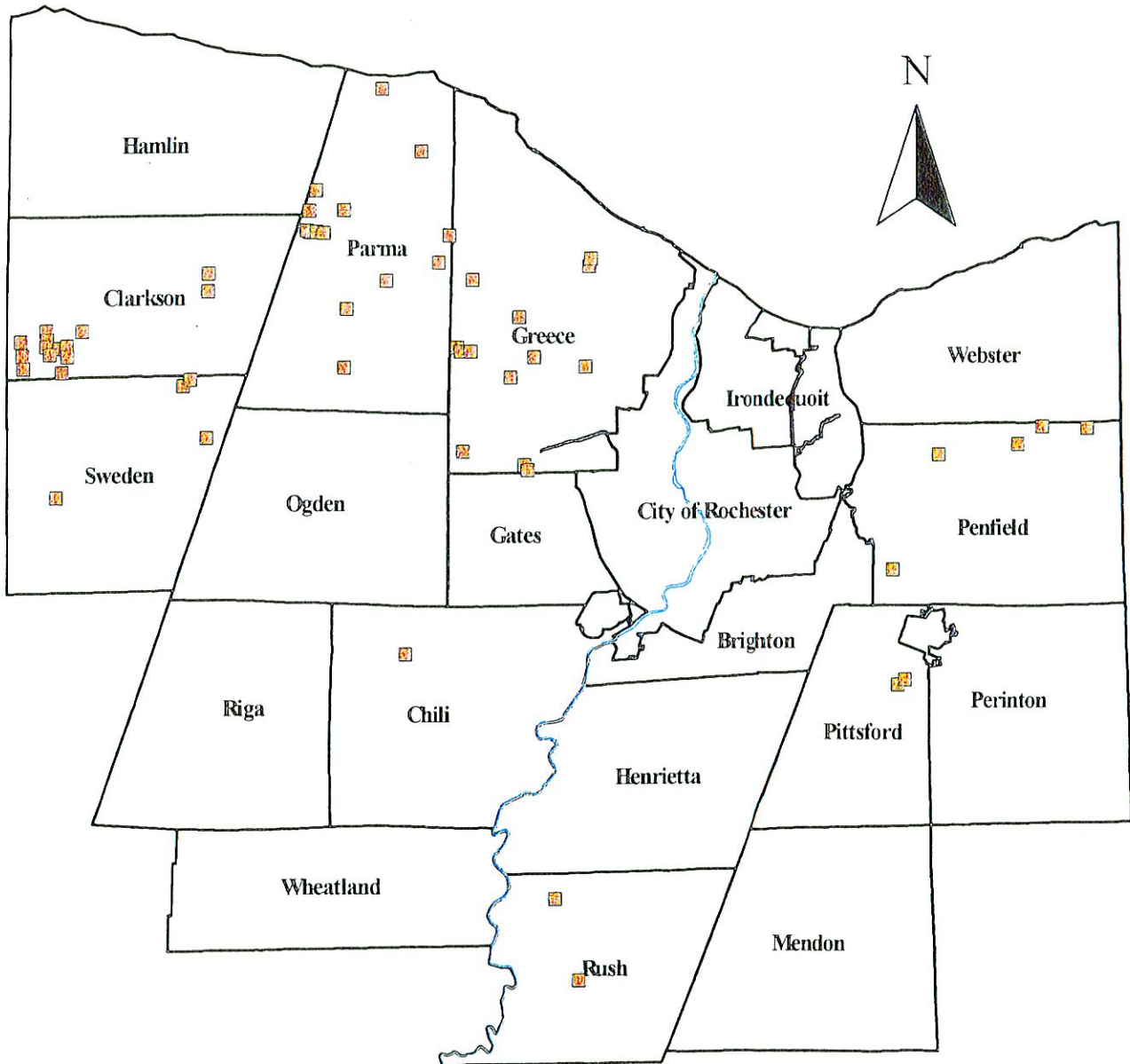
Legend

- Orchard & Fruit Crop Farms
- ~ Genesee River


Map Created By: Monroe County Dept. of Planning and Development, July 1998
Data Source: July, 1997 RPS Parcel Records Maintained by RPTS.
Monroe County does not warrant the correctness or accuracy of this data, or assume any responsibility for any explicit or implied uses.

Map 11

Truck Crop Farms



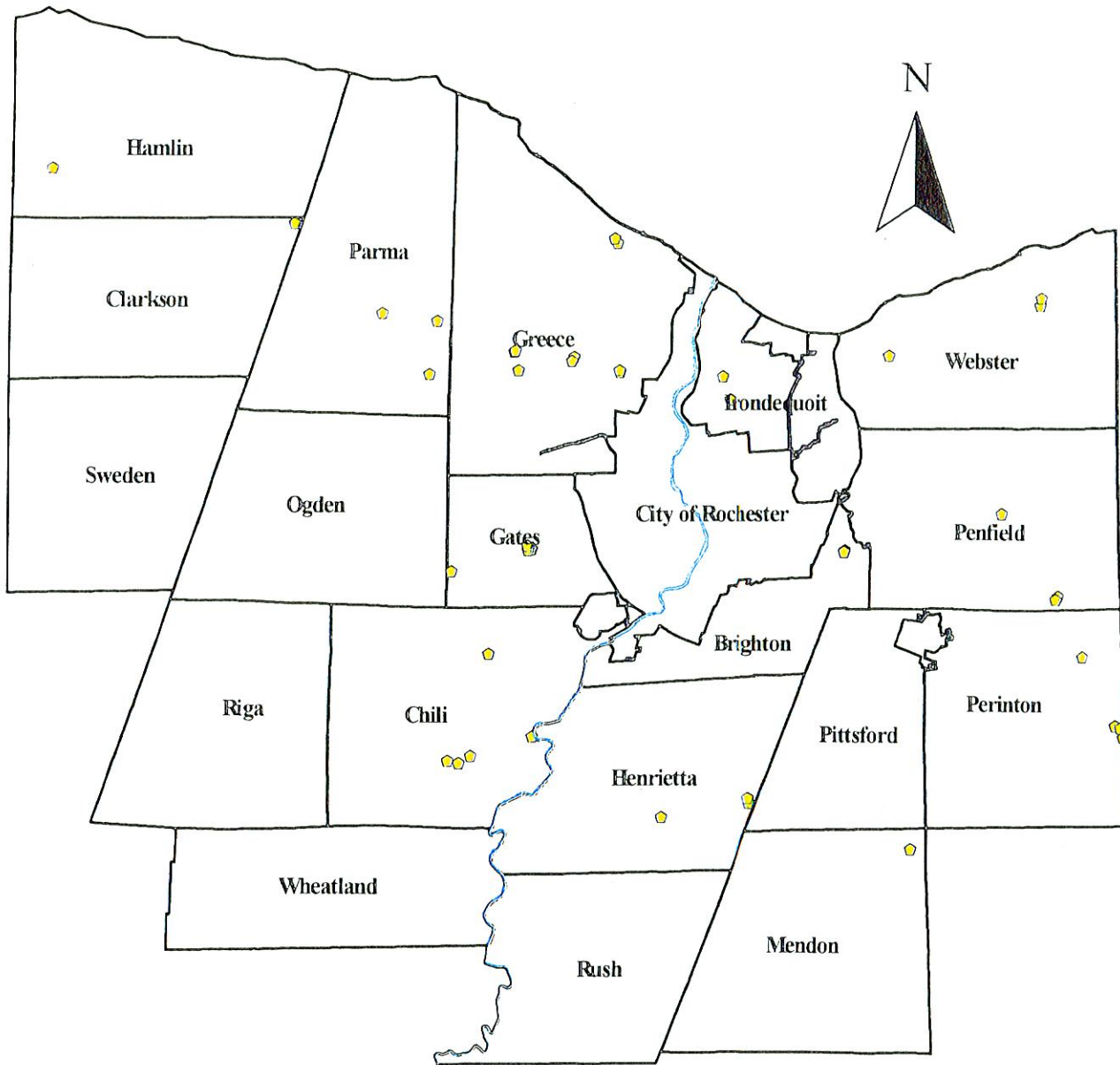
Legend

-  Truck Crop Farms
-  Genesee River

Map Created By: Monroe County Dept. of Planning and Development, July 1998
Data Source: July, 1997 RPS Parcel Records Maintained by RPTS.
Monroe County does not warrant the correctness or accuracy of this data, or assume any responsibility for any explicit or implied uses.

Map 12

Specialty Farms



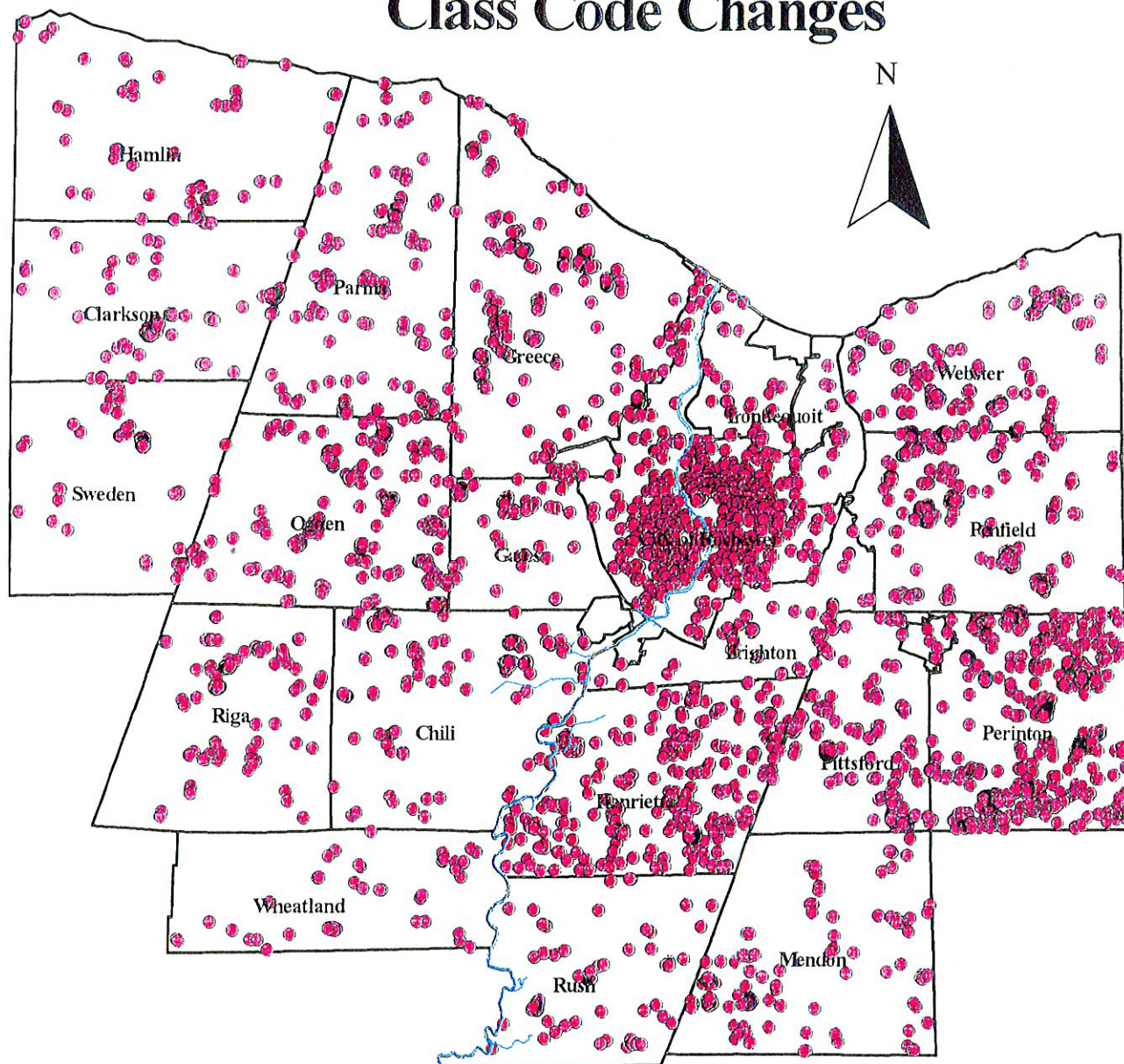
Legend

- Specialty Farms
- Genesee River

Map Created By: Monroe County Dept. of Planning and Development, July 1998
Data Source: July, 1997 RPS Parcel Records Maintained by RPTS.
Monroe County does not warrant the correctness or accuracy of this data, or assume any responsibility for any explicit or implied uses.

Map 13

Distribution of Property Class Code Changes



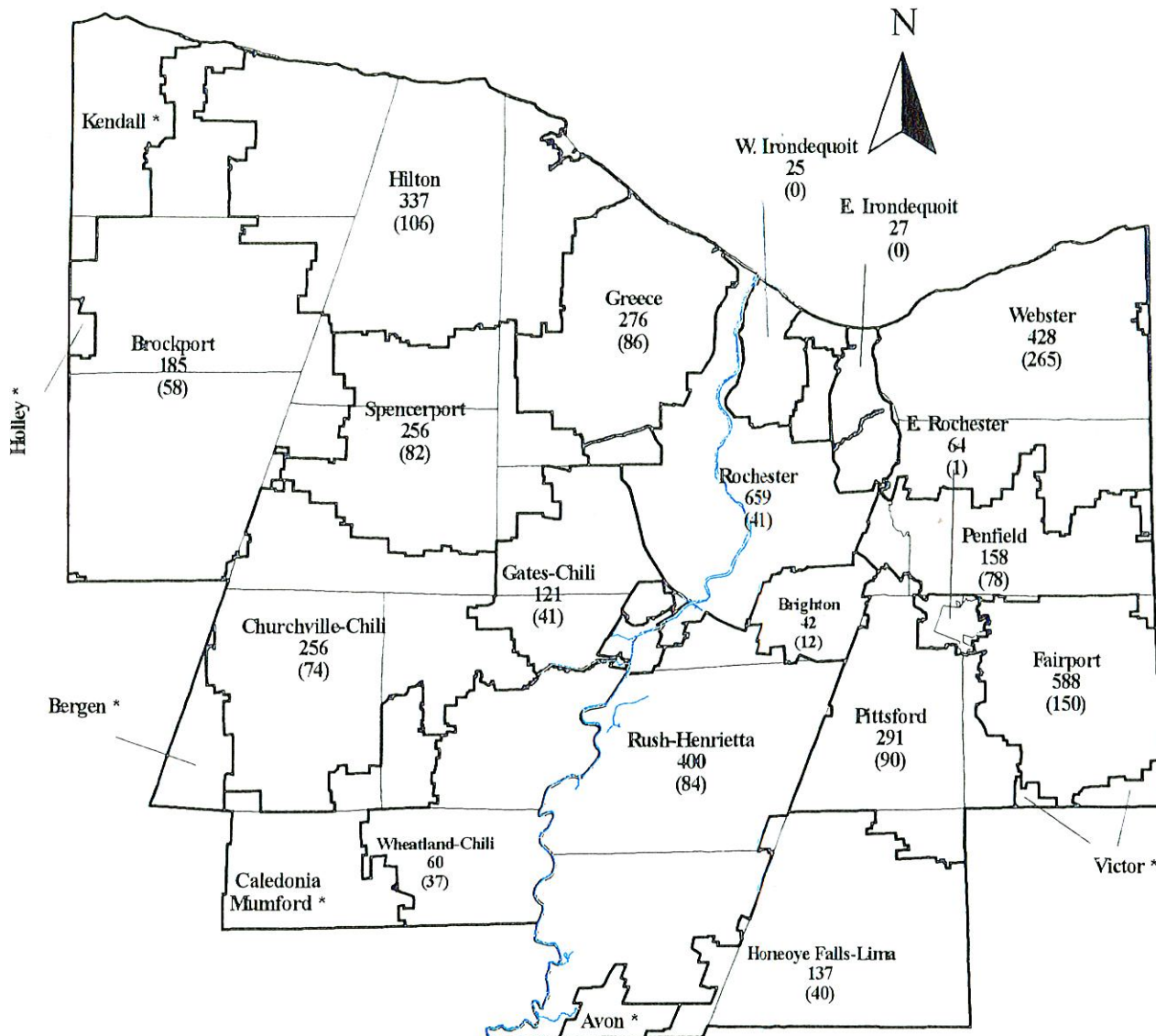
Legend

- All Class Code Changes
- ~ Genesee River

Map Created By: Monroe County Dept. of Planning and Development, June 1998
Data Source: November, 1997 RPS parcel records maintained by RPTS.
Monroe County does not warrant the correctness or accuracy of this data, or assume any responsibility for any explicit or implied uses.

Map 14

Property Class Code Changes And Single Family Building Permits by School District



Legend

- 1 School District Boundaries with Associated Class Code Changes
- (1) School District Boundaries with Associated Building Permits

Genesee River

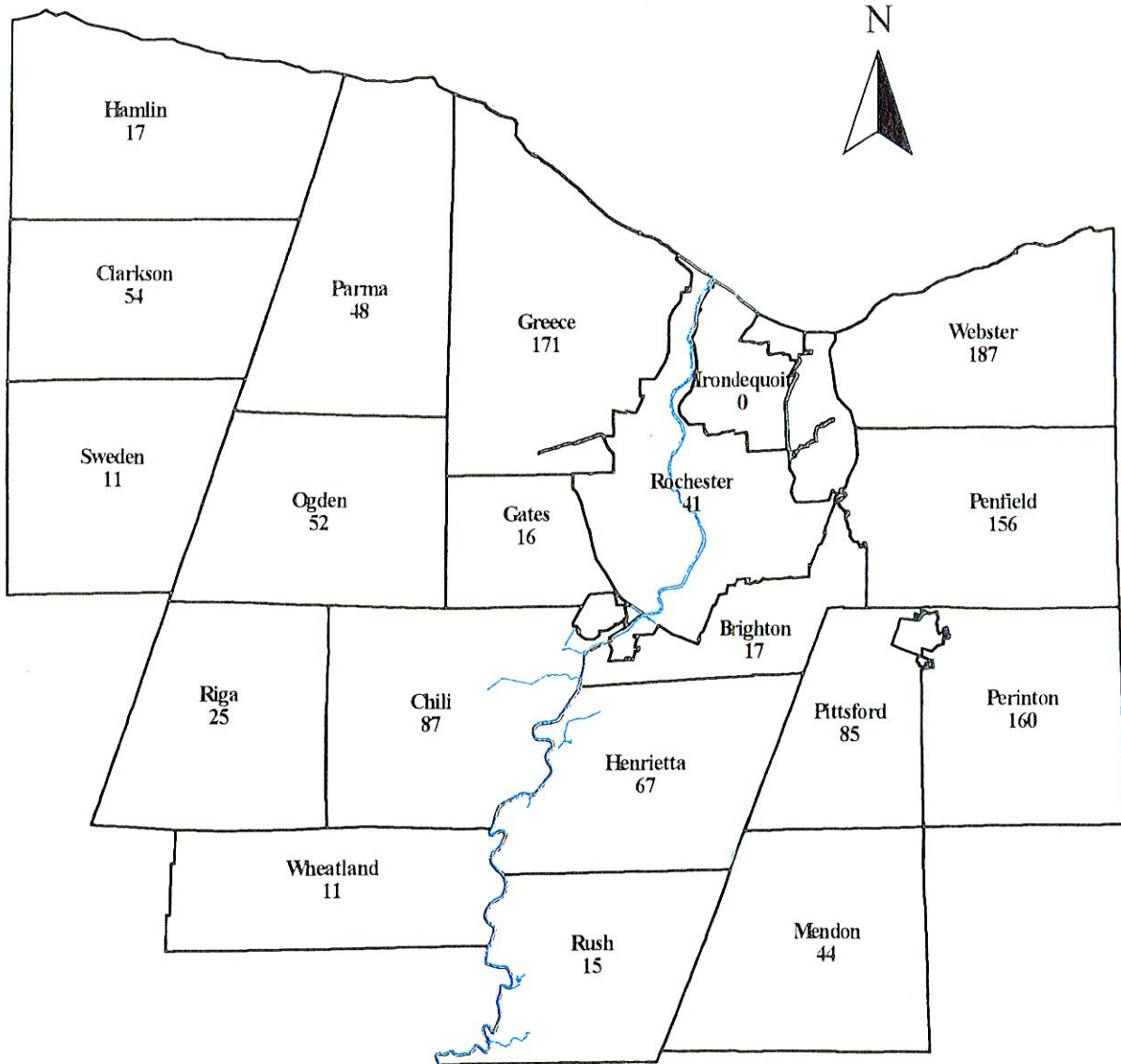
* Data not listed for districts not used in the analyses

4 0 4 8 Miles

Map Created By: Monroe County Dept. of Planning and Development, June 1998
 Data Source: November, 1997 RPS parcel records maintained by RPTS.
 Monroe County does not warrant the correctness or accuracy of this data, or assume any responsibility for any explicit or implied uses.

Map 15

Single Family Building Permits Issued By Municipality



4 0 4 8 Miles

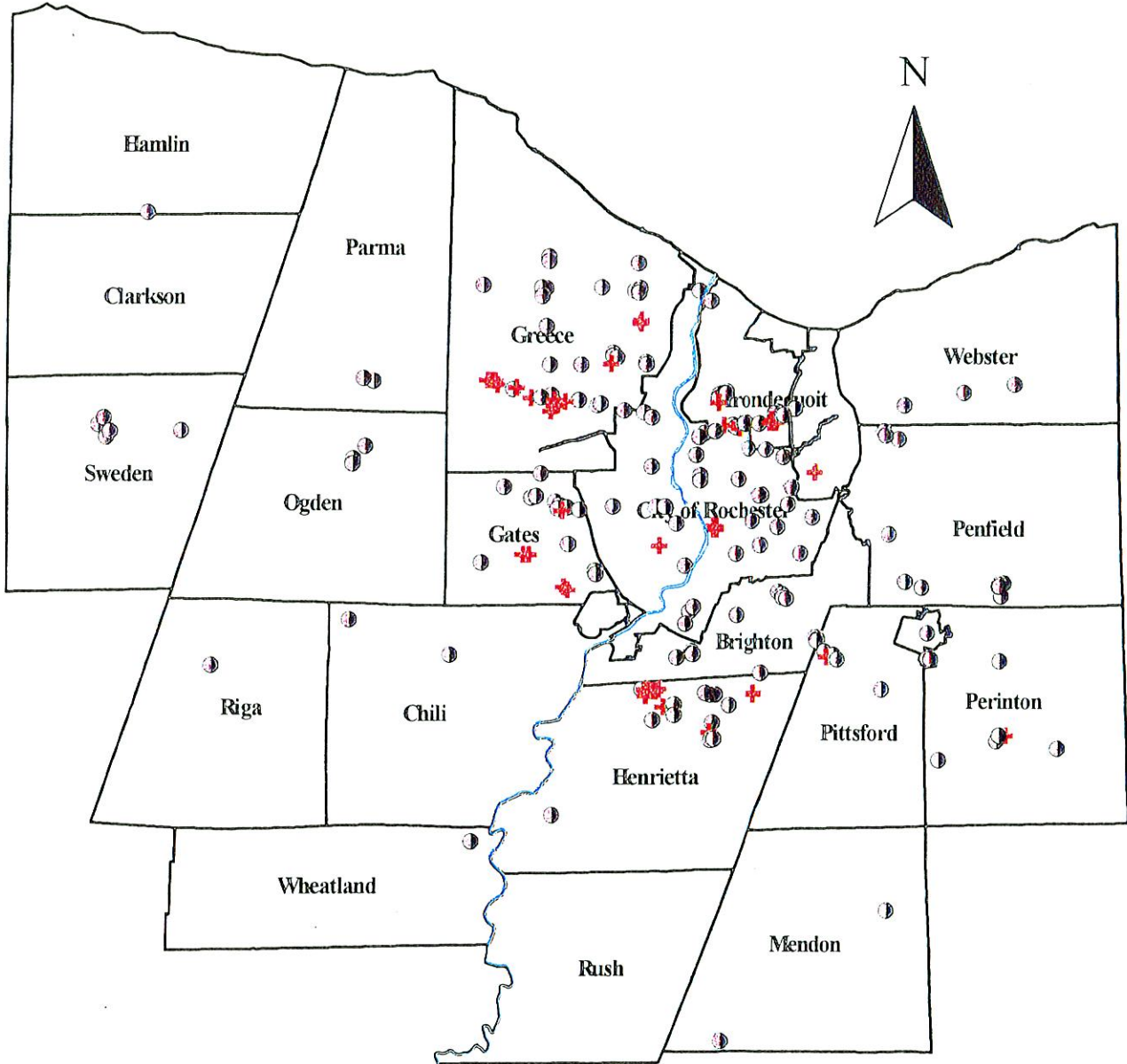
Legend

- 1 Single Family Building Permits
- Genesee River

Map Created By: Monroe County Dept. of Planning and Development, June 1998
Data Source: November, 1997 RPS parcel records maintained by RPTS.
Monroe County does not warrant the correctness or accuracy of this data, or assume any responsibility for any explicit or implied uses.

Map 16

Regional & Area Or Neighborhood Shopping Centers



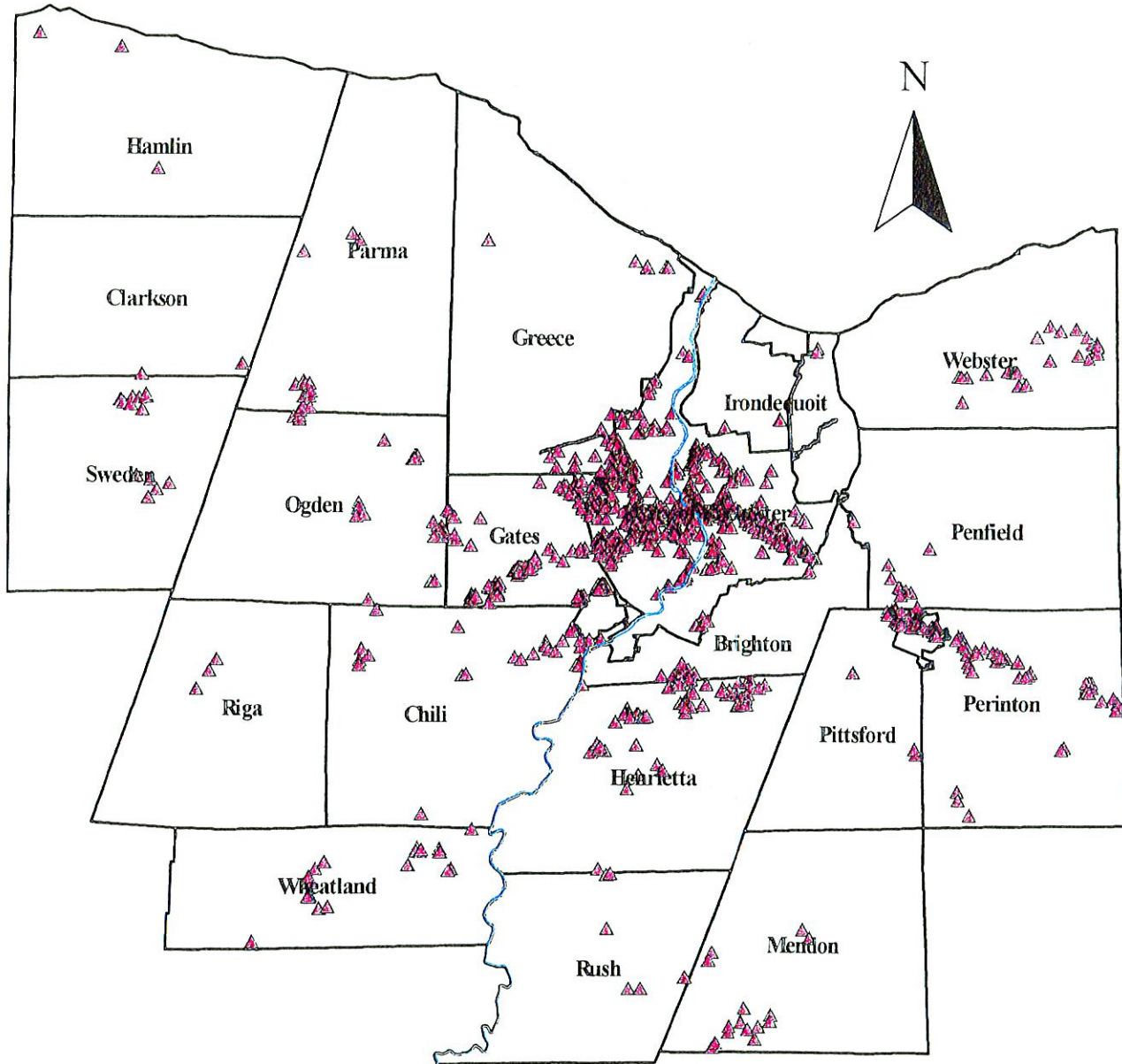
Legend

- + Regional Shopping Centers
- ⊙ Area/Neighborhood Shopping Centers
- ~ Genesee River

Map Created By: Monroe County Dept. of Planning and Development, July 1998
 Data Source: July, 1997 RPS Parcel Records Maintained by RPTS.
 Monroe County does not warrant the correctness or accuracy of this data, or assume any responsibility for any explicit or implied uses.

Map 17

Industrial Operations



4 0 4 8 Miles

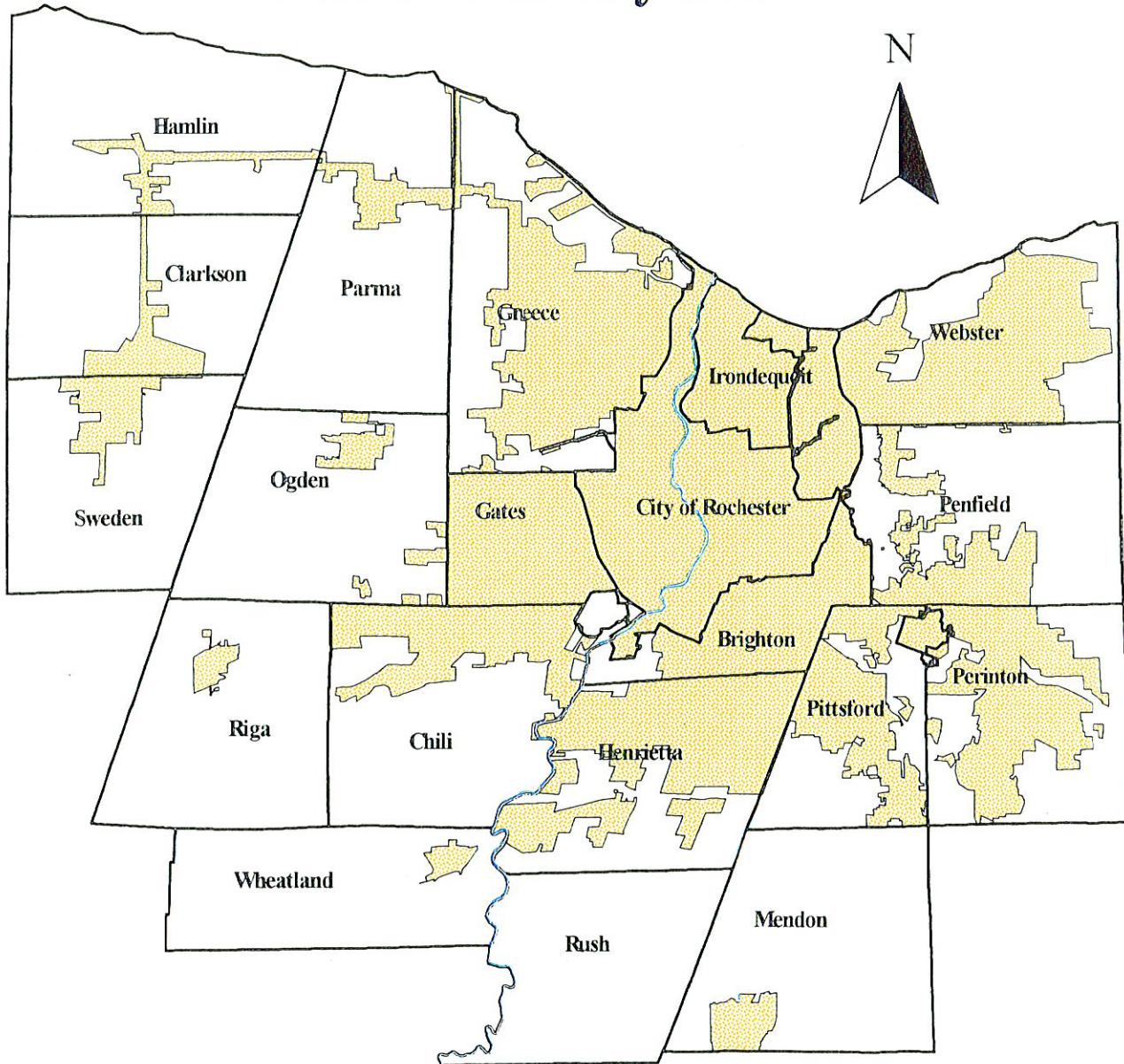
Legend

- ▲ Industrial Operations
- Genesee River

Map Created By: Monroe County Dept. of Planning and Development, July 1998
Data Source: July, 1997 RPS Parcel Records Maintained by RPTS.
Monroe County does not warrant the correctness or accuracy of this data, or assume any responsibility for any explicit or implied uses.



Map 18

Areas Served By Public Sanitary Sewer



4 0 4 8 Miles

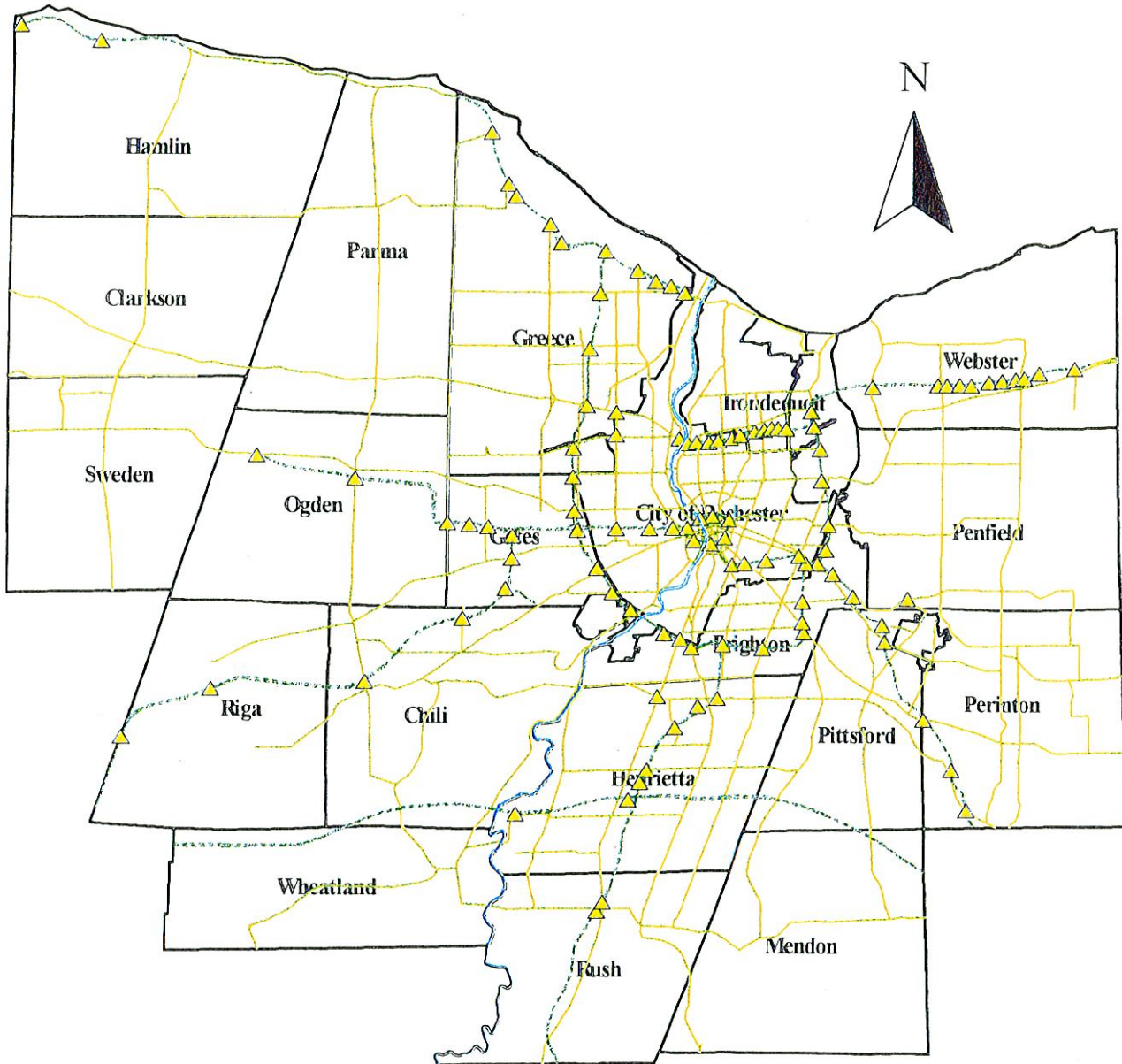
Legend

-  Areas Served by Public Sanitary Sewer
-  Genesee River

Map Created By: Monroe County Dept. of Planning and Development, July 1998
Data Source: July, 1997 RPS Parcel Records Maintained by RPTS.
Monroe County does not warrant the correctness or accuracy of this data, or assume any responsibility for any explicit or implied uses.





Map 19

Arterial Roads and Interchanges



4 0 4 8 Miles

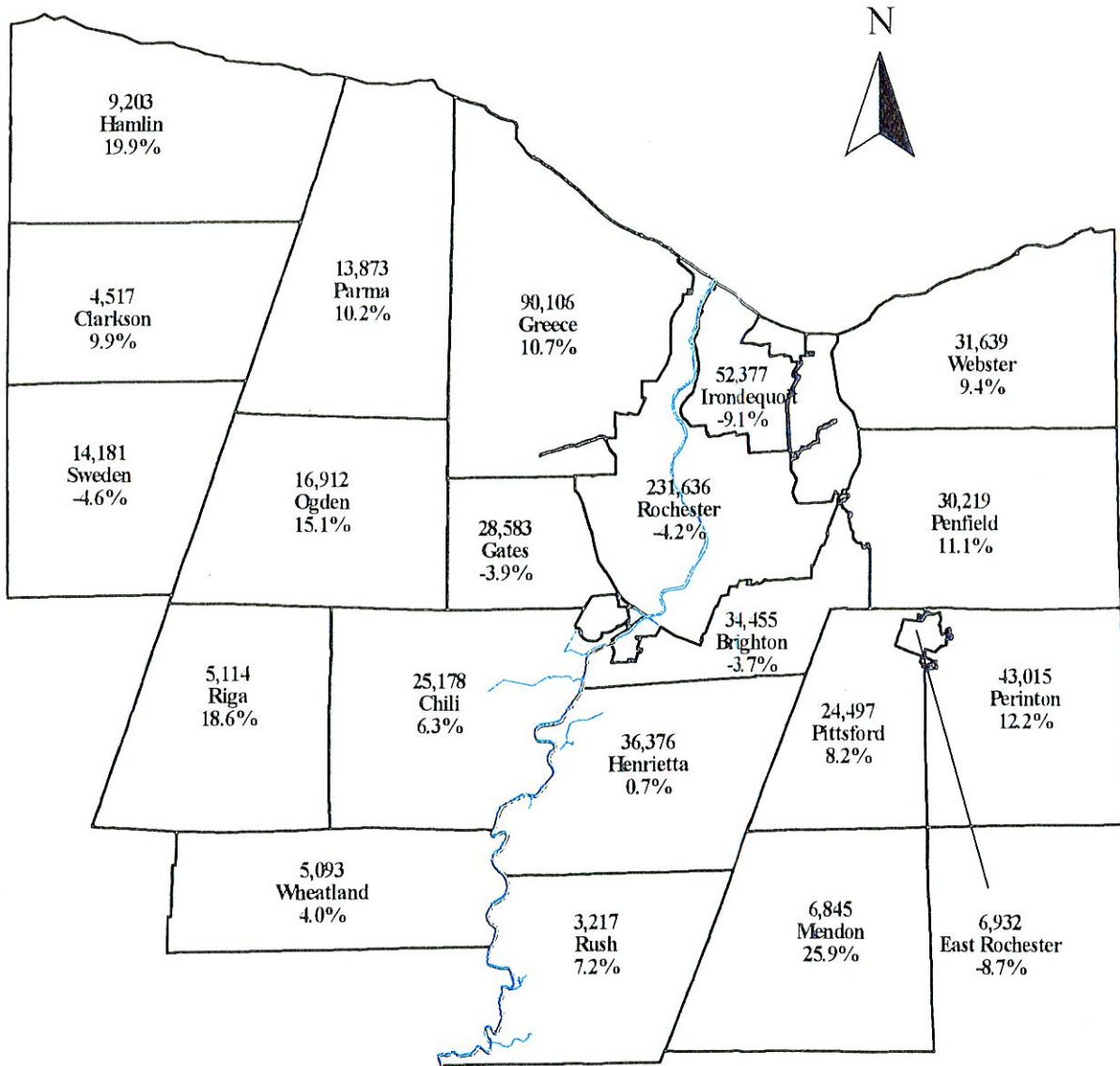
Legend

-  Arterial Roads
-  Interchanges
-  Expressways
-  Genesee River

Map Created By: Monroe County Dept. of Planning and Development, July 1998
Data Source: July, 1997 RPS Parcel Records Maintained by RPTS.
Monroe County does not warrant the correctness or accuracy of this data, or assume any responsibility for any explicit or implied uses.

Map 20

1990 Population and Population Change, 1980-1990, By Municipality



Legend

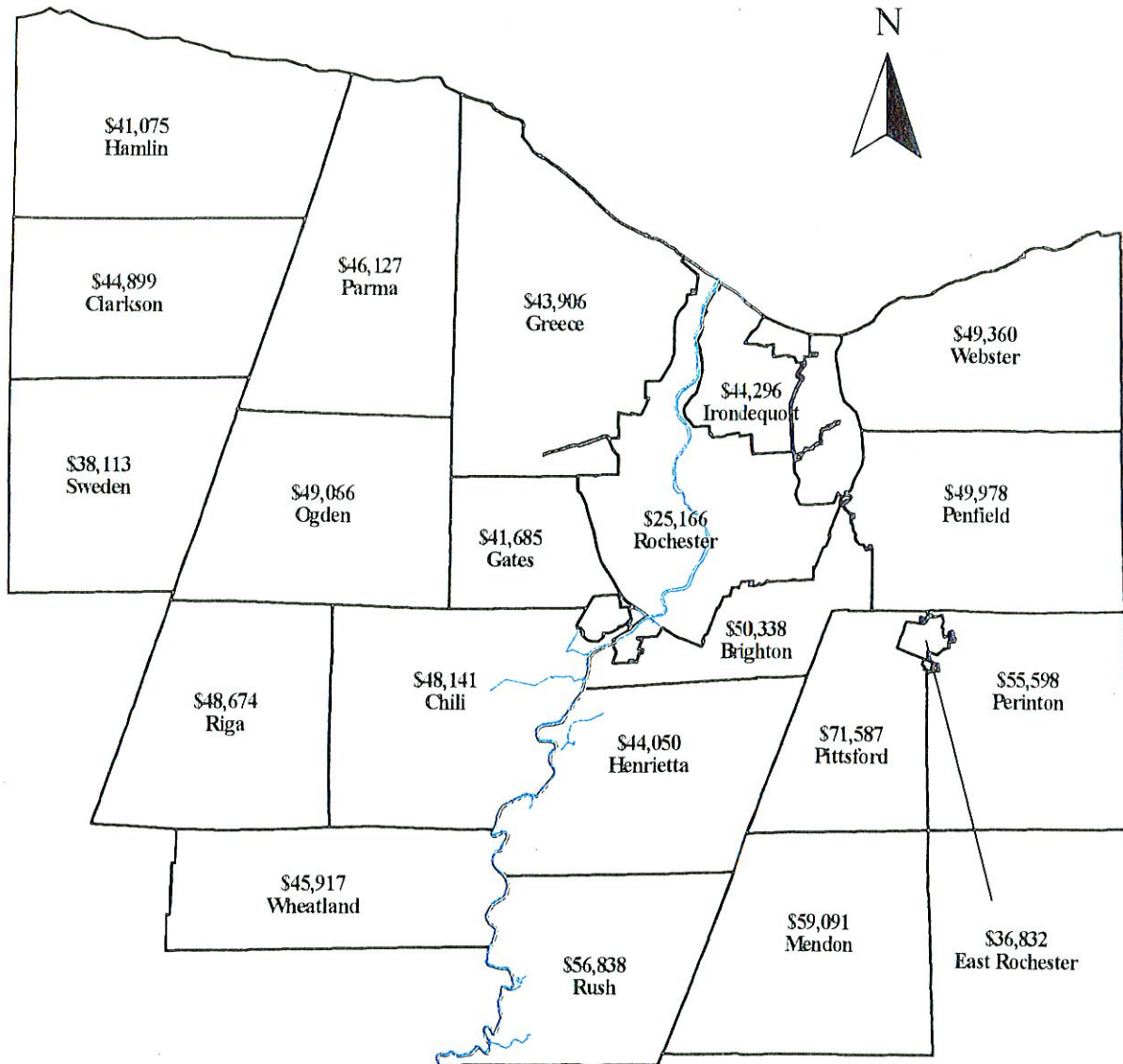
- 1 Represents 1990 Population
- % Represents Percent Change in The Population, 1980-1990
- Genesee River

4 0 4 8 Miles

Map Created By: Monroe County Dept. of Planning and Development, June 1998
 Data Source: November, 1997 RPS parcel records maintained by RPTS.
 Monroe County does not warrant the correctness or accuracy of this data, or assume any responsibility for any explicit or implied uses.

Map 21

Average Median Family Income Per Census Tract By Municipality, 1990



4 0 4 8 Miles

Legend

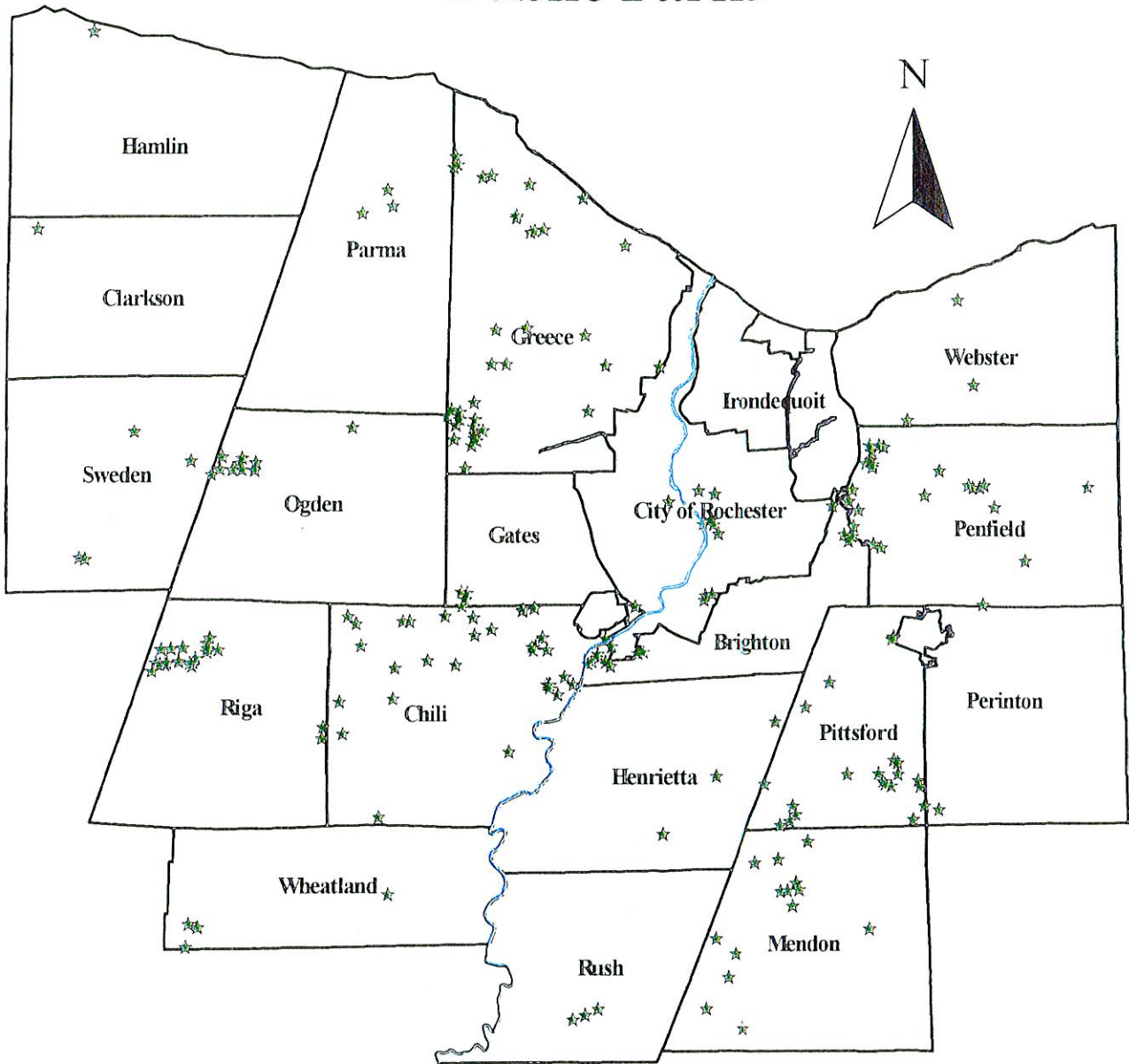
\$ Average Median Family Income
Per Census Tract

Genesee River

Map Created By: Monroe County Dept. of Planning and Development, June 1998
 Data Source: November, 1997 RPS parcel records maintained by RPTS.
 Monroe County does not warrant the correctness or accuracy of this
 data, or assume any responsibility for any explicit or implied uses.

Map 22

Wild, Forested, Conservation Lands & Public Parks



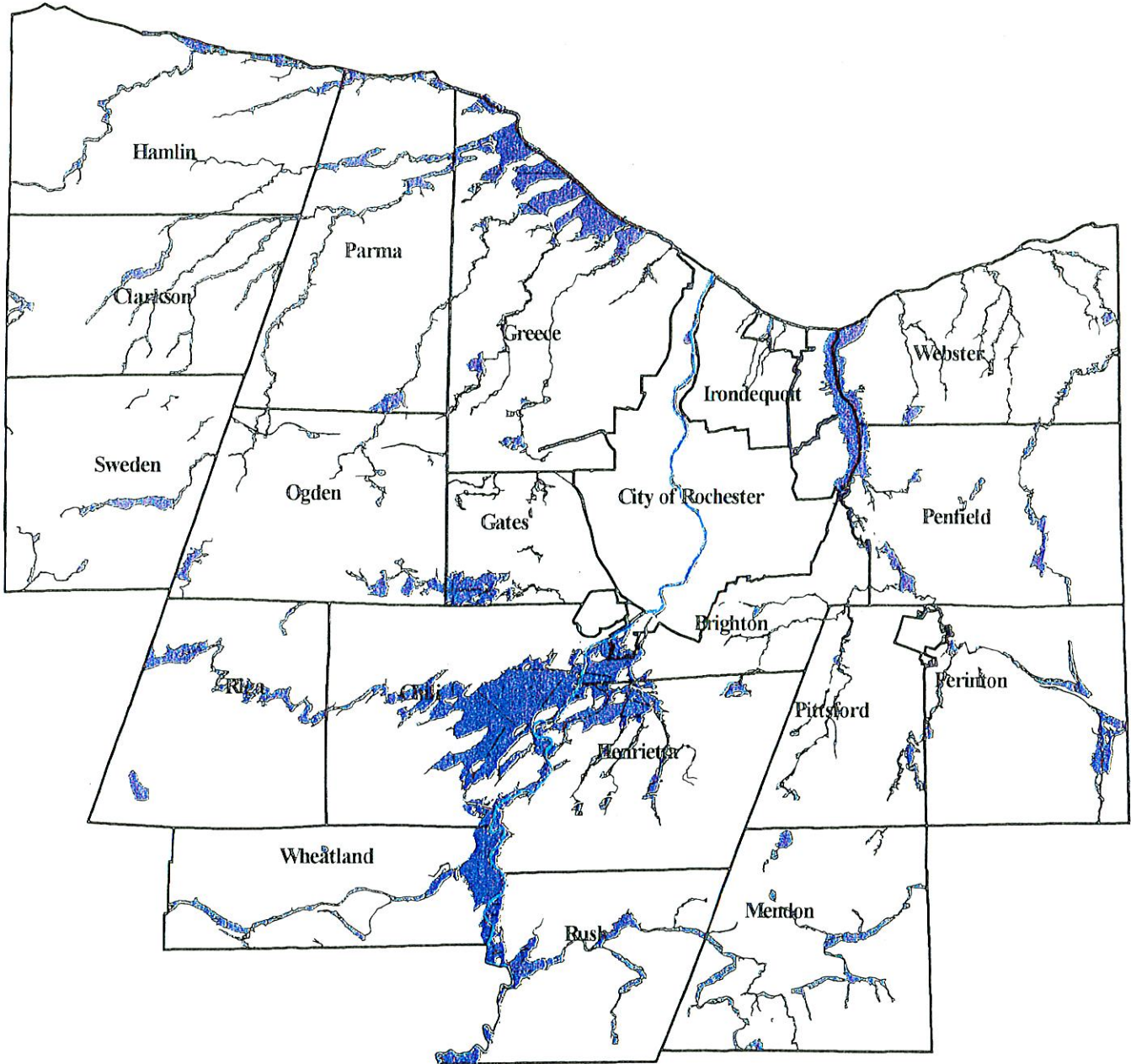
Legend

- ★ Wild, Forested, Conservation Lands & Public Parks
- Genesee River

Map Created By: Monroe County Dept. of Planning and Development, July 1998
Data Source: July, 1997 RPS Parcel Records Maintained by RPTS.
Monroe County does not warrant the correctness or accuracy of this data, or assume any responsibility for any explicit or implied uses.

Map 23

Floodplains



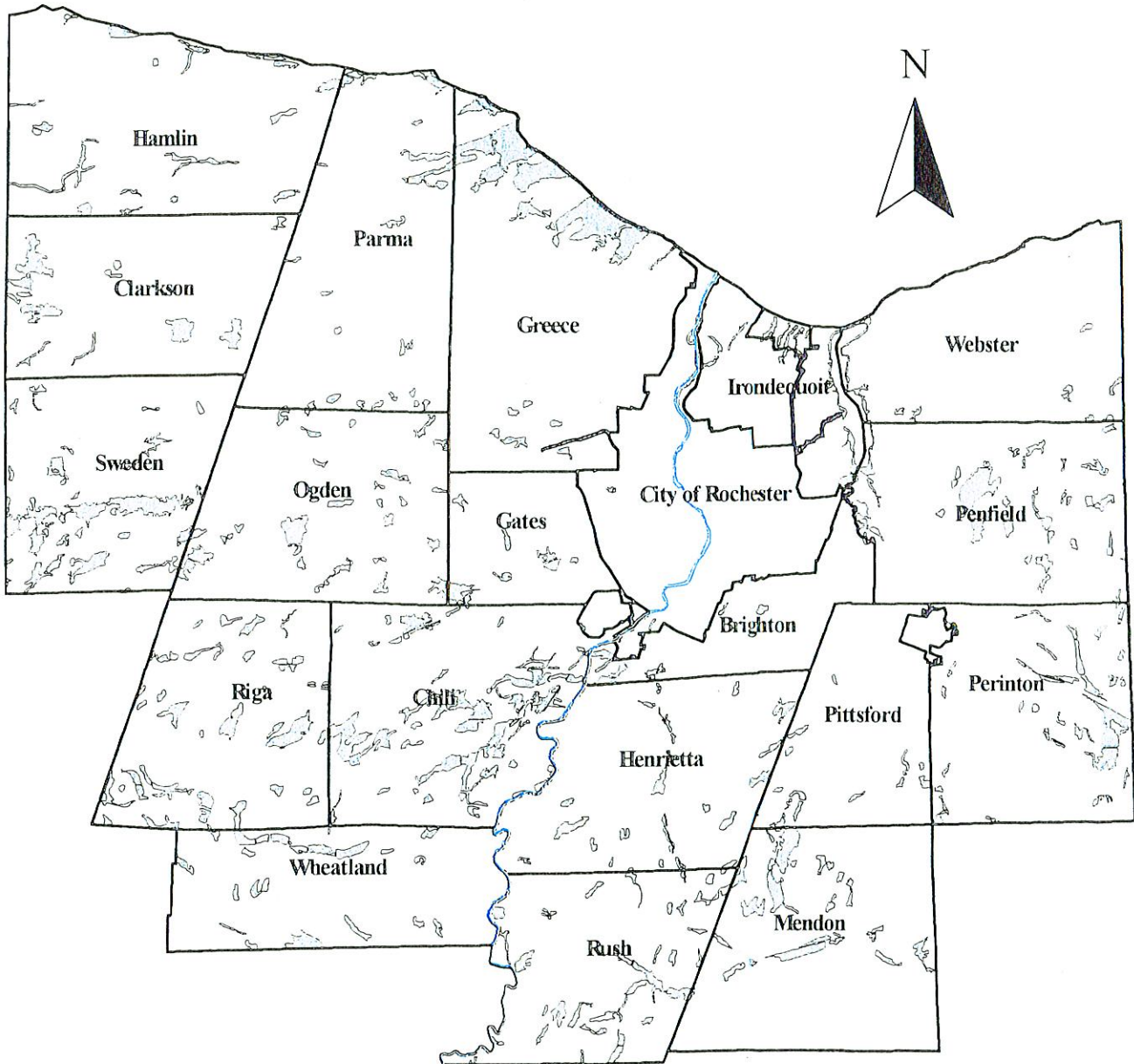
Legend

-  Floodplains
-  Genesee River

Map Created By: Monroe County Dept. of Planning and Development, July 1998
 Data Source: July, 1997 RPS Parcel Records Maintained by RPTS.
 Monroe County does not warrant the correctness or accuracy of this data, or assume any responsibility for any explicit or implied uses.

Map 24

Wetlands



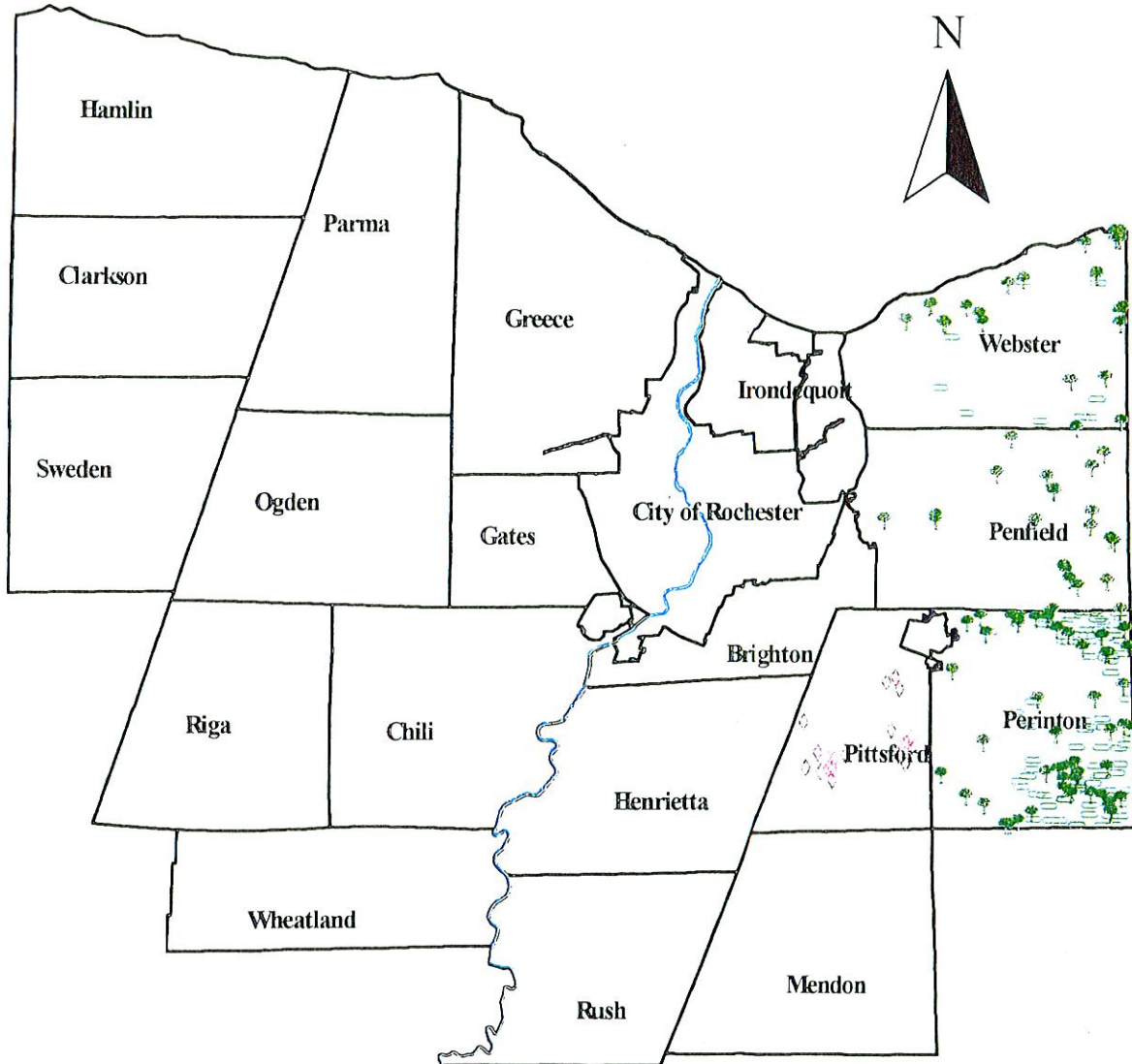
Legend

-  Wetlands
-  Genesee River

Map Created By: Monroe County Dept. of Planning and Development, July 1998
 Data Source: July, 1997 RPS Parcel Records Maintained by RPTS.
 Monroe County does not warrant the correctness or accuracy of this data, or assume any responsibility for any explicit or implied uses.

Map 25

Protected Farmland, Land in Conservation and Farming Easements



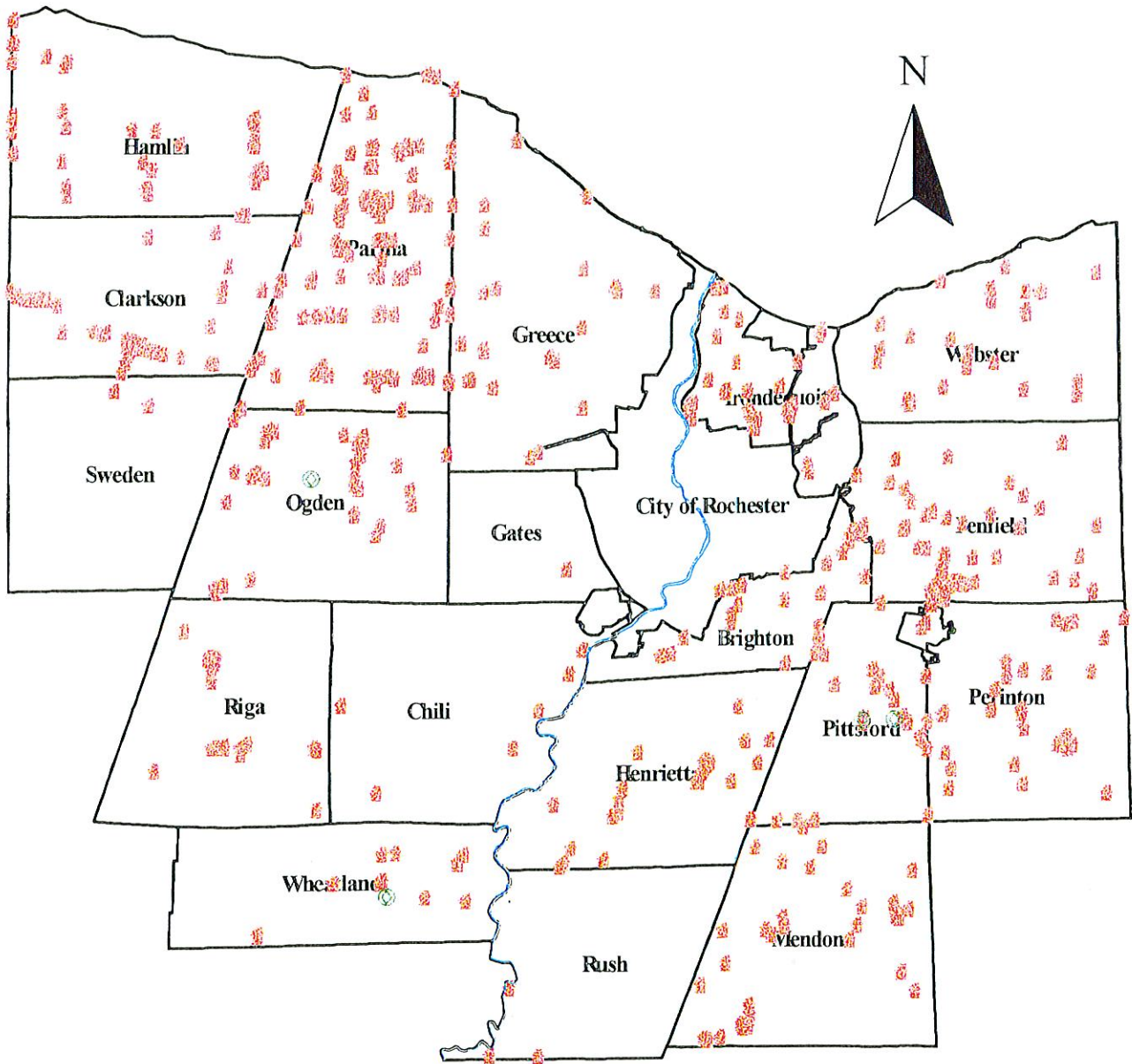
Legend

- Easements
- ◆ Protected Farmland
 - Conservation Easements
 - Farming Easements
 - ~ Genesee River




Map Created By: Monroe County Dept. of Planning and Development, July 1998
Data Source: July, 1997 RPS Parcel Records Maintained by RPTS.
Monroe County does not warrant the correctness or accuracy of this data, or assume any responsibility for any explicit or implied uses.

Map 26

Selected Historic Sites and Century Farms



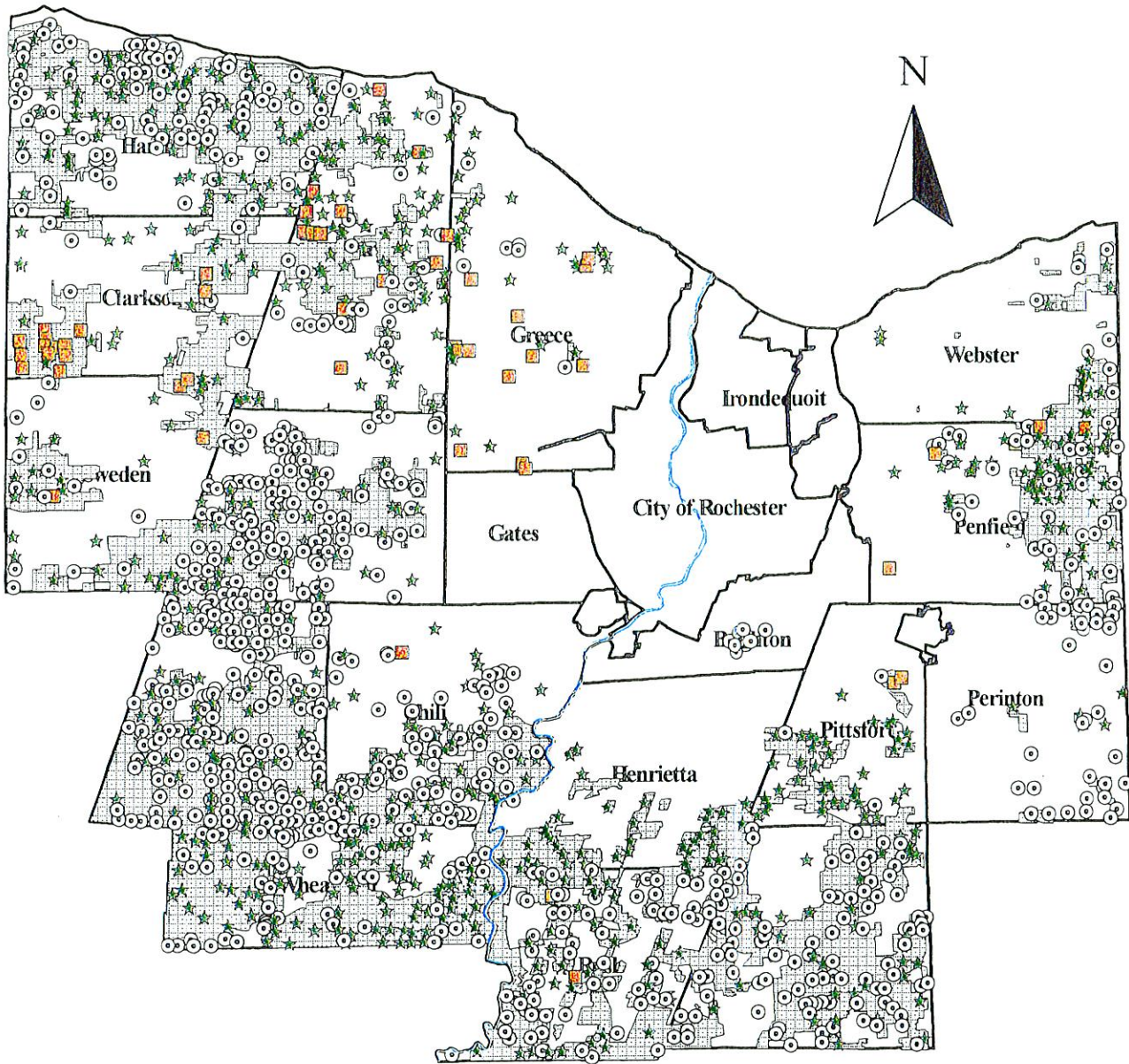
Legend

-  Selected Historic Sites
-  Century Farms
-  Genesee River

Map Created By: Monroe County Dept. of Planning and Development, July 1998
Data Source: July, 1997 RPS Parcel Records Maintained by RPTS.
Monroe County does not warrant the correctness or accuracy of this data, or assume any responsibility for any explicit or implied uses.

Map 27

Farmland Under Conversion Pressure



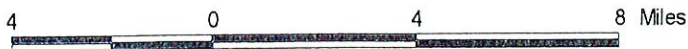
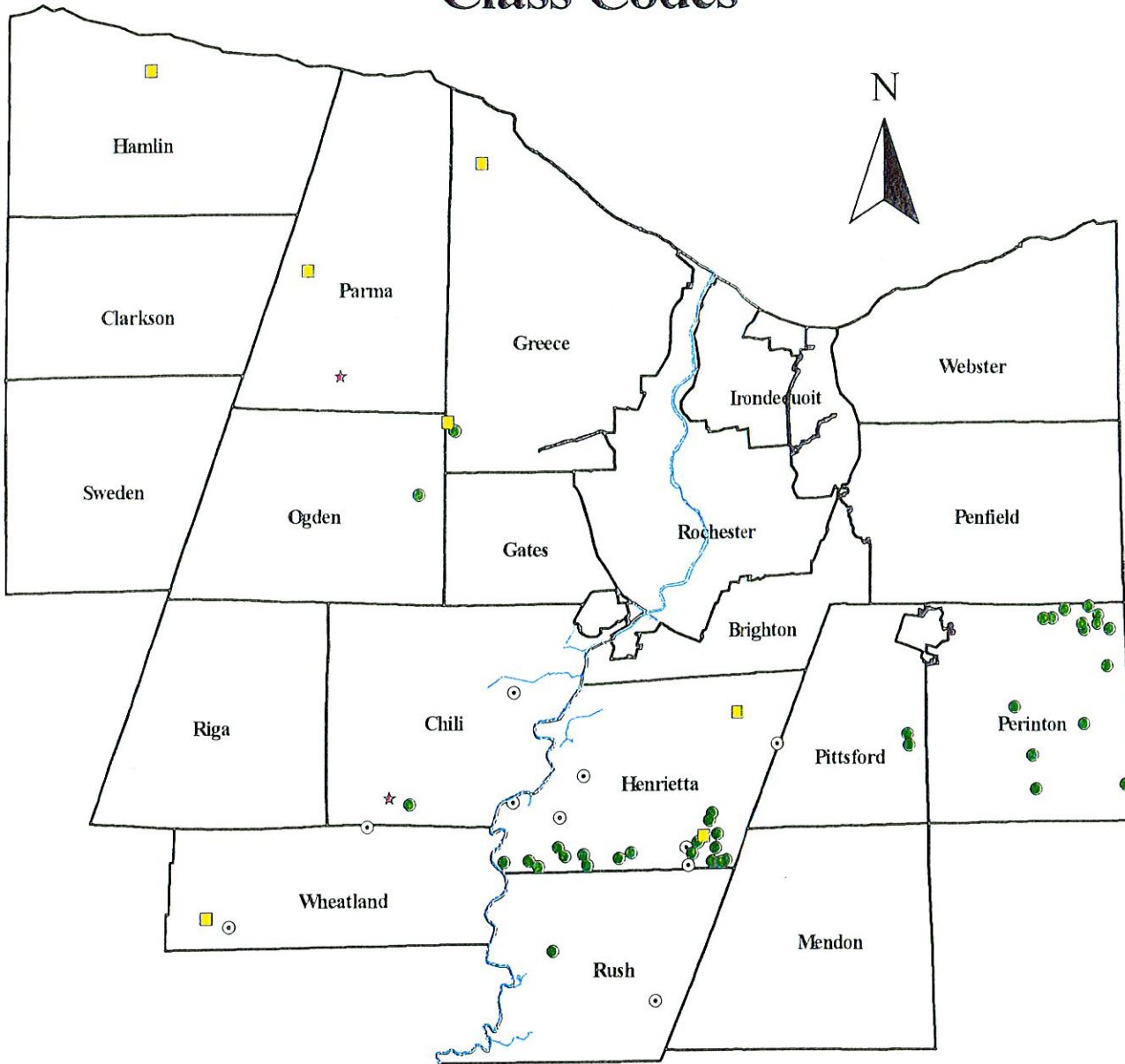
Legend

- ⊙ Agricultural Vacant Land
- ☆ Field Crop Farms
- 🏠 Truck Crop Farms
- 🌾 Agricultural District
- 🌊 Genesee River

Map Created By: Monroe County Dept. of Planning and Development, July 1998
Data Source: July, 1997 RPS Parcel Records Maintained by RPTS.
Monroe County does not warrant the correctness or accuracy of this data, or assume any responsibility for any explicit or implied uses.

Map 28

Agricultural Parcels With Changing Class Codes



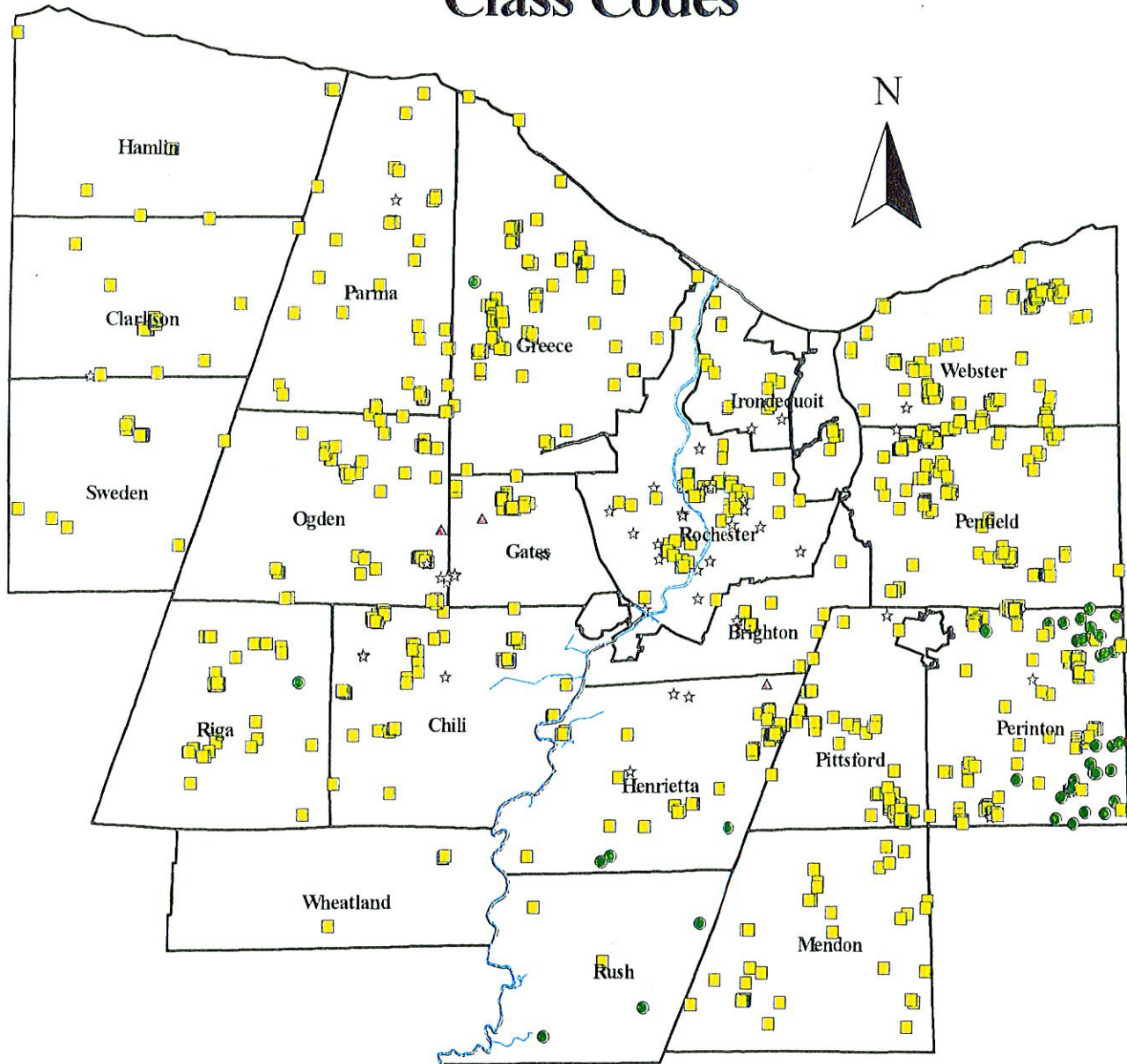
Legend

- From Agriculture
- to Agriculture
- to Residential
- to Vacant Land
- ★ to Commercial
- ~ Genesee River

Map Created By: Monroe County Dept. of Planning and Development June 1998
 Data Source: November, 1997 RPS parcel records maintained by RPTS.
 Monroe County does not warrant the correctness or accuracy of this data, or assume any responsibility for any explicit or implied uses.

Map 29

Vacant Land Parcels With Changing Class Codes



4 0 4 8 Miles

Legend

- From Vacant Land
- To Agriculture
- To Residential
- ☆ To Commercial
- ▲ To Industrial
- ~ Genesee River

Map Created By: Monroe County Dept. of Planning and Development June 1998
 Data Source: November, 1997 RPS parcel records maintained by RPTS.
 Monroe County does not warrant the correctness or accuracy of this data, or assume any responsibility for any explicit or implied uses.