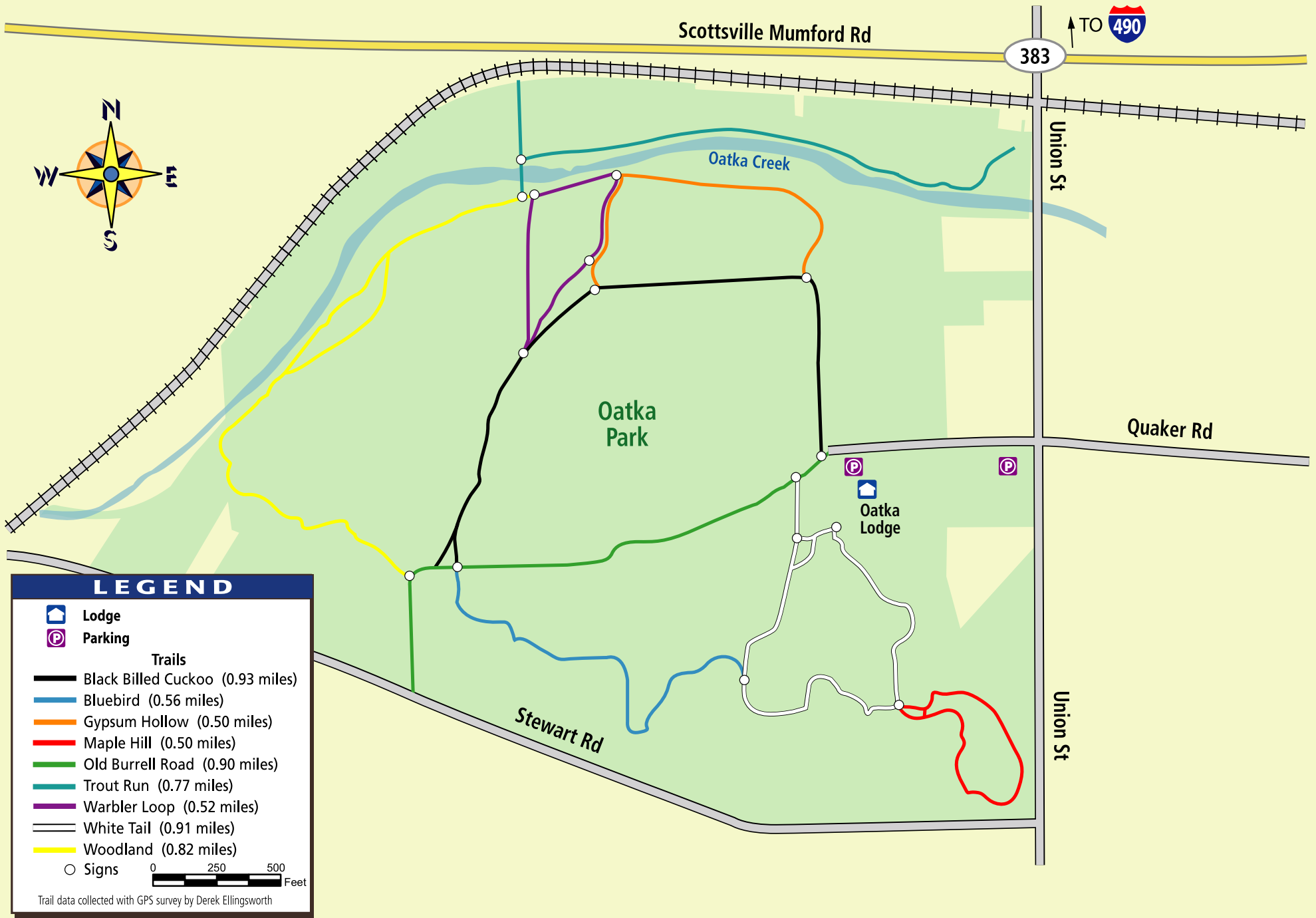




MONROE COUNTY'S OATKA CREEK PARK

Maggie Brooks
County Executive





MONROE COUNTY'S OATKA CREEK PARK

Maggie Brooks
County Executive

Oatka Creek Park

Fly Fishing, Hiking and Cross-Country Running.

If you have rented Oakta Lodge:

Park Staff will unlock the lodge for you prior to your arrival time stated on your reservation permit. The Lodge has a capacity of 50 and is available for rental year round. Amenities include: picnic tables, a large grill outside, a kitchen area including an oven, sink, refridgerator, indoor restrooms, a fireplace with woodstove and electrical outlets.

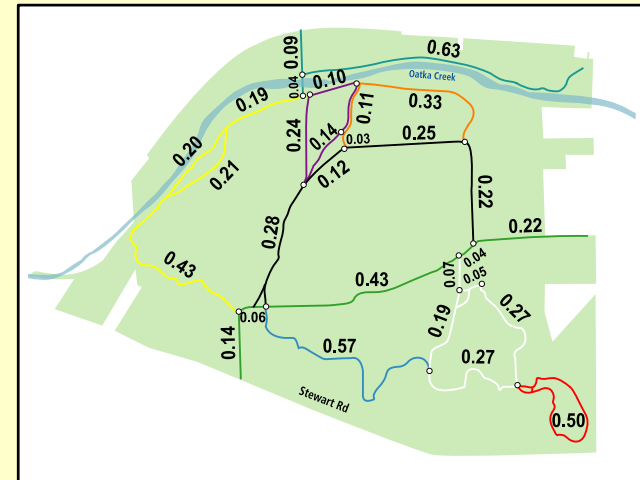
Oatka Creek Park Hours and Rules

Oatka Creek Park gates are open everyday at 7:00 a.m. until 11:00 p.m. The lodge is rented from 10:00 a.m. to 10:00 p.m. daily. Our County Parks are **Carry-In Carry-Out**. Please take all garbage with you to dispose of after you leave the park. **Keg Beer is permitted if noted on your rental permit. All pets must be leashed and you are responsible for cleaning up after them. Do not bring glass bottles to the park.**

Monroe County's Park Staff Assistance:
509-2843 or 889-9610

Information or Reservations:
753-PARK (7275) • www.monroecounty.gov

Detailed Mileages



Location Map

