



VOTER TURNOUT SUMMARY REPORT 2010 GENERAL ELECTION

Monroe County Board of Elections
39 West Main Street, Rochester, New York 14614

January 10, 2011

Peter M. Quinn
Commissioner of Elections

Thomas F. Ferrarese
Commissioner of Elections

CONTENTS DESCRIPTION

General Summary	Page 1
Democratic Summary	Page 12
Republican Summary	Page 18
Independence Summary	Page 24
Conservative Summary	Page 30
Working Families Summary	Page 36
Blanks Summary	Page 42
Historical Data.....	Page 48

GENERAL SUMMARY

2010 GENERAL ELECTION
VOTER TURNOUT BY GENDER

LT/LD SUMMARY

LEGISLATIVE DISTRICT OR TOWN CITY	TOTAL VOTERS			MALES			FEMALES		
	VOTED	REGISTERED	TURNOUT	VOTED	REGISTERED	TURNOUT	VOTED	REGISTERED	TURNOUT
Leg. Dist. 06	1,561	2,954	52.84 %	705	1,261	55.91 %	856	1,693	50.56 %
Leg. Dist. 07	851	1,579	53.89 %	386	712	54.21 %	465	867	53.63 %
Leg. Dist. 21	5,357	12,710	42.15 %	2,362	5,489	43.03 %	2,995	7,221	41.48 %
Leg. Dist. 22	2,383	8,917	26.72 %	903	3,657	24.69 %	1,480	5,260	28.14 %
Leg. Dist. 23	6,249	11,449	54.58 %	3,111	5,572	55.83 %	3,138	5,877	53.39 %
Leg. Dist. 24	3,881	6,845	56.70 %	1,812	3,157	57.40 %	2,069	3,688	56.10 %
Leg. Dist. 25	3,931	9,637	40.79 %	1,721	4,288	40.14 %	2,210	5,349	41.32 %
Leg. Dist. 26	2,742	6,749	40.63 %	1,193	2,885	41.35 %	1,549	3,864	40.09 %
Leg. Dist. 27	4,794	13,292	36.07 %	1,914	5,552	34.47 %	2,880	7,740	37.21 %
Leg. Dist. 28	3,014	9,169	32.87 %	1,326	3,855	34.40 %	1,688	5,314	31.77 %
Leg. Dist. 29	3,880	11,080	35.02 %	1,635	4,575	35.74 %	2,245	6,505	34.51 %
TOTAL:	38,643	94,381	40.94 %	17,068	41,003	41.63 %	21,575	53,378	40.42 %
TOWNS									
Brighton	13,555	21,361	63.46 %	6,158	9,514	64.73 %	7,397	11,847	62.44 %
Chili	10,422	18,681	55.79 %	5,036	8,769	57.43 %	5,386	9,912	54.34 %
Clarkson	2,102	3,791	55.45 %	1,070	1,806	59.25 %	1,032	1,985	51.99 %
East Rochester	1,978	3,734	52.97 %	901	1,697	53.09 %	1,077	2,037	52.87 %
Gates	8,903	17,565	50.69 %	4,155	7,916	52.49 %	4,748	9,649	49.21 %
Greece	31,811	60,704	52.40 %	15,188	27,589	55.05 %	16,623	33,115	50.20 %
Hamlin	2,779	5,245	52.98 %	1,434	2,502	57.31 %	1,345	2,743	49.03 %
Henrietta	11,480	21,179	54.20 %	5,545	9,964	55.65 %	5,935	11,215	52.92 %
Irondequoit	19,188	34,111	56.25 %	8,809	15,094	58.36 %	10,379	19,017	54.58 %
Mendon	3,995	6,341	63.00 %	1,977	3,072	64.36 %	2,018	3,269	61.73 %
Ogden	6,872	12,397	55.43 %	3,361	5,794	58.01 %	3,511	6,603	53.17 %
Parma	5,441	10,204	53.32 %	2,711	4,869	55.68 %	2,730	5,335	51.17 %
Penfield	14,946	24,420	61.20 %	7,207	11,369	63.39 %	7,739	13,051	59.30 %
Perinton	20,623	32,452	63.55 %	9,933	15,141	65.60 %	10,690	17,311	61.75 %
Pittsford	12,655	19,268	65.68 %	6,058	8,956	67.64 %	6,597	10,312	63.97 %
Riga	2,245	3,771	59.53 %	1,094	1,799	60.81 %	1,151	1,972	58.37 %
Rush	1,654	2,519	65.66 %	825	1,231	67.02 %	829	1,288	64.36 %
Sweden	3,436	6,178	55.62 %	1,675	2,887	58.02 %	1,761	3,291	53.51 %
Webster	16,548	27,867	59.38 %	8,004	12,878	62.15 %	8,544	14,989	57.00 %
Wheatland	1,787	3,131	57.07 %	882	1,459	60.45 %	905	1,672	54.13 %
TOTAL:	192,420	334,919	57.45 %	92,023	154,306	59.64 %	100,397	180,613	55.59 %
GRAND TOTAL:	231,063	429,300	53.82 %	109,091	195,309	55.86 %	121,972	233,991	52.13 %

2010 GENERAL ELECTION
VOTER TURNOUT BY PARTY

LT/LD SUMMARY

Part 1 of 2

LEGISLATIVE DISTRICT OR TOWN	DEMOCRAT			REPUBLICAN			INDEPENDENCE		
	VOTED	REGISTERED	TURNOUT	VOTED	REGISTERED	TURNOUT	VOTED	REGISTERED	TURNOUT
CITY									
Leg. Dist. 06	612	1,207	50.70 %	494	797	61.98 %	68	130	52.31 %
Leg. Dist. 07	347	659	52.66 %	269	439	61.28 %	43	79	54.43 %
Leg. Dist. 21	3,343	7,996	41.81 %	873	1,647	53.01 %	190	490	38.78 %
Leg. Dist. 22	2,049	6,843	29.94 %	141	521	27.06 %	24	166	14.46 %
Leg. Dist. 23	3,464	5,991	57.82 %	1,220	2,069	58.97 %	231	553	41.77 %
Leg. Dist. 24	2,350	3,793	61.96 %	635	1,111	57.16 %	124	288	43.06 %
Leg. Dist. 25	3,058	7,088	43.14 %	346	764	45.29 %	82	237	34.60 %
Leg. Dist. 26	1,499	3,734	40.14 %	670	1,249	53.64 %	96	263	36.50 %
Leg. Dist. 27	3,727	9,979	37.35 %	470	1,049	44.80 %	98	331	29.61 %
Leg. Dist. 28	1,947	5,794	33.60 %	531	1,189	44.66 %	86	299	28.76 %
Leg. Dist. 29	2,754	7,468	36.88 %	595	1,305	45.59 %	83	268	30.97 %
TOTAL:	25,150	60,552	41.53 %	6,244	12,140	51.43 %	1,125	3,104	36.24 %
TOWNS									
Brighton	6,438	9,604	67.03 %	3,852	5,732	67.20 %	410	804	51.00 %
Chili	3,148	5,888	53.46 %	4,601	7,104	64.77 %	312	721	43.27 %
Clarkson	507	986	51.42 %	1,062	1,649	64.40 %	84	182	46.15 %
East Rochester	666	1,267	52.57 %	736	1,185	62.11 %	102	209	48.80 %
Gates	3,277	6,578	49.82 %	3,436	5,724	60.03 %	320	729	43.90 %
Greece	9,455	18,985	49.80 %	13,824	22,564	61.27 %	1,122	2,608	43.02 %
Hamlin	589	1,244	47.35 %	1,515	2,359	64.22 %	103	270	38.15 %
Henrietta	4,067	7,620	53.37 %	4,574	7,180	63.70 %	363	879	41.30 %
Irondequoit	7,205	12,990	55.47 %	6,690	10,445	64.05 %	737	1,480	49.80 %
Mendon	1,053	1,762	59.76 %	1,891	2,717	69.60 %	155	284	54.58 %
Ogden	1,688	3,257	51.83 %	3,273	5,073	64.52 %	233	567	41.09 %
Parma	1,230	2,510	49.00 %	2,638	4,220	62.51 %	209	454	46.04 %
Penfield	4,509	7,452	60.51 %	6,264	9,153	68.44 %	545	1,077	50.60 %
Perinton	5,960	9,663	61.68 %	9,124	12,848	71.01 %	691	1,302	53.07 %
Pittsford	3,951	6,005	65.80 %	5,542	7,671	72.25 %	402	712	56.46 %
Riga	474	850	55.76 %	1,178	1,722	68.41 %	87	187	46.52 %
Rush	440	664	66.27 %	763	1,056	72.25 %	39	92	42.39 %
Sweden	1,004	1,822	55.10 %	1,525	2,379	64.10 %	138	311	44.37 %
Webster	4,945	8,418	58.74 %	6,829	10,240	66.69 %	624	1,310	47.63 %
Wheatland	534	936	57.05 %	802	1,228	65.31 %	68	147	46.26 %
TOTAL:	61,140	108,501	56.35 %	80,119	122,249	65.54 %	6,744	14,325	47.08 %
GRAND TOTAL:	86,290	169,053	51.04 %	86,363	134,389	64.26 %	7,869	17,429	45.15 %

2010 GENERAL ELECTION
VOTER TURNOUT BY PARTY

LT/LD SUMMARY
Part 2 of 2

LEGISLATIVE DISTRICT OR TOWN	CONSERVATIVE			WORKING FAMILIES			BLANK		
	VOTED	REGISTERED	TURNOUT	VOTED	REGISTERED	TURNOUT	VOTED	REGISTERED	TURNOUT
CITY									
Leg. Dist. 06	57	84	67.86 %	3	9	33.33 %	327	727	44.98 %
Leg. Dist. 07	17	30	56.67 %	1	3	33.33 %	174	369	47.15 %
Leg. Dist. 21	66	105	62.86 %	14	60	23.33 %	871	2,412	36.11 %
Leg. Dist. 22	15	44	34.09 %	5	74	6.76 %	149	1,269	11.74 %
Leg. Dist. 23	66	99	66.67 %	13	29	44.83 %	1,255	2,708	46.34 %
Leg. Dist. 24	36	53	67.92 %	13	29	44.83 %	723	1,571	46.02 %
Leg. Dist. 25	26	51	50.98 %	8	41	19.51 %	411	1,456	28.23 %
Leg. Dist. 26	57	93	61.29 %	7	50	14.00 %	413	1,360	30.37 %
Leg. Dist. 27	32	66	48.48 %	15	66	22.73 %	452	1,801	25.10 %
Leg. Dist. 28	68	117	58.12 %	11	71	15.49 %	371	1,699	21.84 %
Leg. Dist. 29	43	95	45.26 %	8	81	9.88 %	397	1,863	21.31 %
TOTAL:	483	837	57.71 %	98	513	19.10 %	5,543	17,235	32.16 %
TOWNS									
Brighton	143	196	72.96 %	8	23	34.78 %	2,704	5,002	54.06 %
Chili	286	433	66.05 %	11	38	28.95 %	2,064	4,497	45.90 %
Clarkson	72	123	58.54 %	0	11	0.00 %	377	840	44.88 %
East Rochester	46	89	51.69 %	2	18	11.11 %	426	966	44.10 %
Gates	243	394	61.68 %	19	64	29.69 %	1,608	4,076	39.45 %
Greece	946	1,533	61.71 %	54	176	30.68 %	6,410	14,838	43.20 %
Hamlin	83	127	65.35 %	3	12	25.00 %	486	1,233	39.42 %
Henrietta	283	455	62.20 %	10	39	25.64 %	2,183	5,006	43.61 %
Irondequoit	450	681	66.08 %	25	70	35.71 %	4,081	8,445	48.32 %
Mendon	73	110	66.36 %	1	5	20.00 %	822	1,463	56.19 %
Ogden	231	366	63.11 %	9	31	29.03 %	1,438	3,103	46.34 %
Parma	173	261	66.28 %	17	50	34.00 %	1,174	2,709	43.34 %
Penfield	276	390	70.77 %	11	30	36.67 %	3,341	6,318	52.88 %
Perinton	312	440	70.91 %	16	49	32.65 %	4,520	8,150	55.46 %
Pittsford	160	209	76.56 %	7	15	46.67 %	2,593	4,656	55.69 %
Riga	64	93	68.82 %	3	9	33.33 %	439	910	48.24 %
Rush	41	51	80.39 %	4	8	50.00 %	367	648	56.64 %
Sweden	89	135	65.93 %	1	21	4.76 %	679	1,510	44.97 %
Webster	391	541	72.27 %	15	47	31.91 %	3,744	7,311	51.21 %
Wheatland	57	76	75.00 %	0	4	0.00 %	326	740	44.05 %
TOTAL:	4,419	6,703	65.93 %	216	720	30.00 %	39,782	82,421	48.27 %
GRAND TOTAL:	4,902	7,540	65.01 %	314	1,233	25.47 %	45,325	99,656	45.48 %

2010 GENERAL ELECTION
VOTER TURNOUT BY AGE

LT/LD SUMMARY
Part 1 of 2

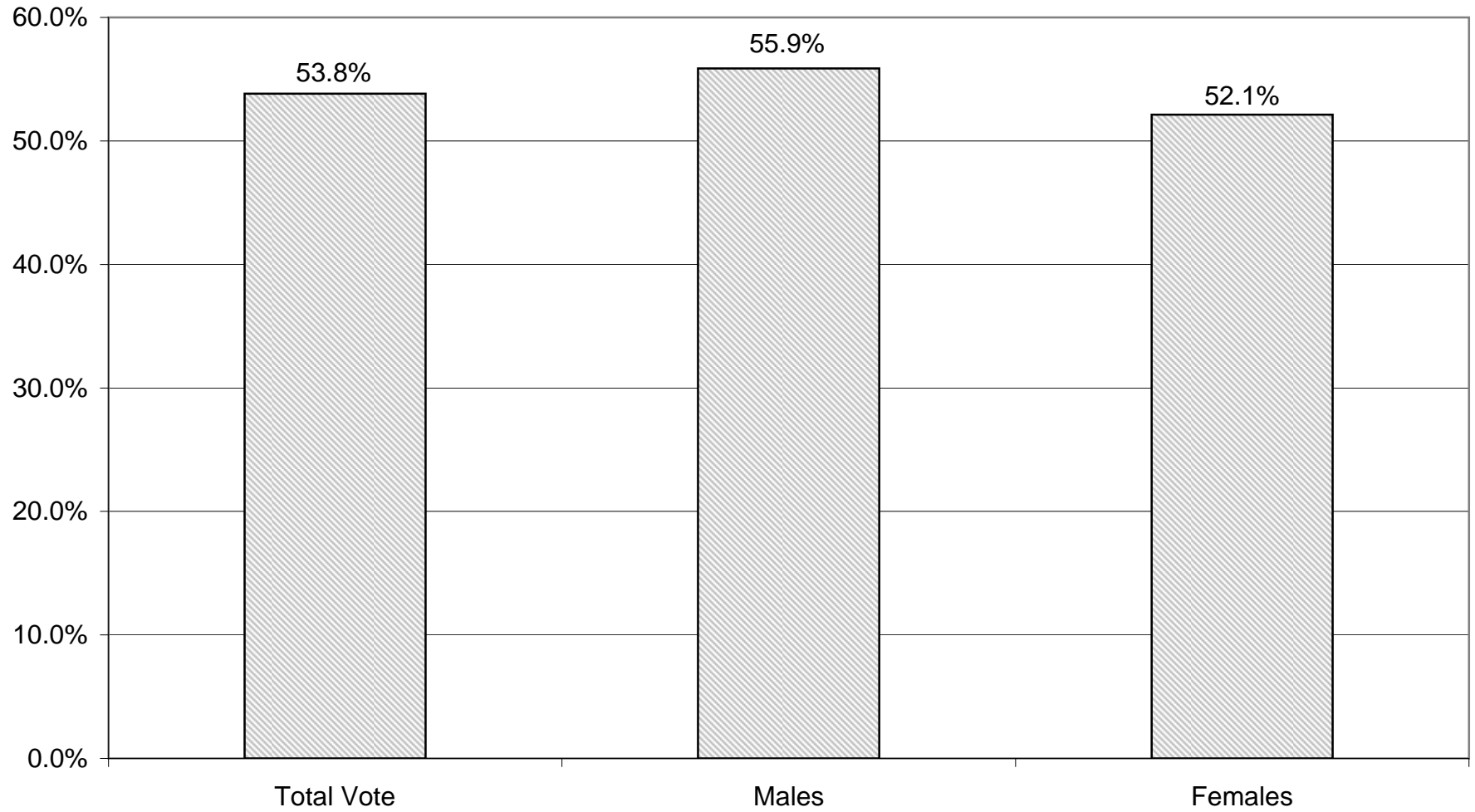
LEGISLATIVE DISTRICT OR TOWN CITY	NDOB			18-24			25-34			35-44		
	VOTED	REGISTERED	TURNOUT	VOTED	REGISTERED	TURNOUT	VOTED	REGISTERED	TURNOUT	VOTED	REGISTERED	TURNOUT
Leg. Dist. 06	26	39	66.67 %	27	196	13.78 %	152	555	27.39 %	209	463	45.14 %
Leg. Dist. 07	10	22	45.45 %	8	86	9.30 %	53	204	25.98 %	72	190	37.89 %
Leg. Dist. 21	108	169	63.91 %	144	1,226	11.75 %	794	2,764	28.73 %	872	2,424	35.97 %
Leg. Dist. 22	25	45	55.56 %	66	1,110	5.95 %	243	1,743	13.94 %	334	1,662	20.10 %
Leg. Dist. 23	103	136	75.74 %	134	845	15.86 %	1,173	3,082	38.06 %	955	1,932	49.43 %
Leg. Dist. 24	54	81	66.67 %	60	460	13.04 %	714	1,665	42.88 %	614	1,100	55.82 %
Leg. Dist. 25	55	94	58.51 %	128	1,162	11.02 %	507	1,852	27.38 %	530	1,585	33.44 %
Leg. Dist. 26	46	71	64.79 %	74	673	11.00 %	335	1,506	22.24 %	424	1,288	32.92 %
Leg. Dist. 27	57	110	51.82 %	176	1,555	11.32 %	506	2,477	20.43 %	699	2,376	29.42 %
Leg. Dist. 28	45	84	53.57 %	80	1,005	7.96 %	277	1,762	15.72 %	396	1,622	24.41 %
Leg. Dist. 29	71	130	54.62 %	93	1,235	7.53 %	363	2,038	17.81 %	447	1,879	23.79 %
TOTAL:	600	981	61.16 %	990	9,553	10.36 %	5,117	19,648	26.04 %	5,552	16,521	33.61 %
TOWNS												
Brighton	221	327	67.58 %	324	1,531	21.16 %	1,076	2,985	36.05 %	1,664	3,036	54.81 %
Chili	196	284	69.01 %	265	1,543	17.17 %	828	2,802	29.55 %	1,327	3,055	43.44 %
Clarkson	3	6	50.00 %	61	301	20.27 %	139	462	30.09 %	287	747	38.42 %
East Rochester	71	101	70.30 %	65	343	18.95 %	214	682	31.38 %	258	606	42.57 %
Gates	64	131	48.85 %	172	1,175	14.64 %	653	2,622	24.90 %	961	2,678	35.88 %
Greece	597	972	61.42 %	784	4,951	15.84 %	2,188	8,562	25.55 %	3,273	8,905	36.75 %
Hamlin	14	27	51.85 %	79	494	15.99 %	194	709	27.36 %	319	846	37.71 %
Henrietta	46	82	56.10 %	307	1,822	16.85 %	940	3,150	29.84 %	1,517	3,495	43.40 %
Irondequoit	404	656	61.59 %	410	2,560	16.02 %	1,536	4,896	31.37 %	2,270	5,106	44.46 %
Mendon	10	17	58.82 %	112	692	16.18 %	180	599	30.05 %	498	1,008	49.40 %
Ogden	76	117	64.96 %	176	1,036	16.99 %	499	1,680	29.70 %	854	2,027	42.13 %
Parma	23	50	46.00 %	138	999	13.81 %	306	1,295	23.63 %	661	1,619	40.83 %
Penfield	200	313	63.90 %	331	1,826	18.13 %	841	2,699	31.16 %	1,902	3,829	49.67 %
Perinton	59	114	51.75 %	496	2,831	17.52 %	1,191	3,579	33.28 %	2,602	5,071	51.31 %
Pittsford	89	133	66.92 %	282	1,544	18.26 %	507	1,715	29.56 %	1,478	2,836	52.12 %
Riga	6	16	37.50 %	62	307	20.20 %	136	453	30.02 %	254	566	44.88 %
Rush	52	66	78.79 %	57	198	28.79 %	59	241	24.48 %	152	314	48.41 %
Sweden	28	46	60.87 %	103	571	18.04 %	245	883	27.75 %	401	918	43.68 %
Webster	229	338	67.75 %	367	1,988	18.46 %	922	3,133	29.43 %	2,054	4,649	44.18 %
Wheatland	13	18	72.22 %	44	284	15.49 %	127	463	27.43 %	164	402	40.80 %
TOTAL:	2,401	3,814	62.95 %	4,635	26,996	17.17 %	12,781	43,610	29.31 %	22,896	51,713	44.28 %
GRAND TOTAL:	3,001	4,795	62.59 %	5,625	36,549	15.39 %	17,898	63,258	28.29 %	28,448	68,234	41.69 %

2010 GENERAL ELECTION
VOTER TURNOUT BY AGE

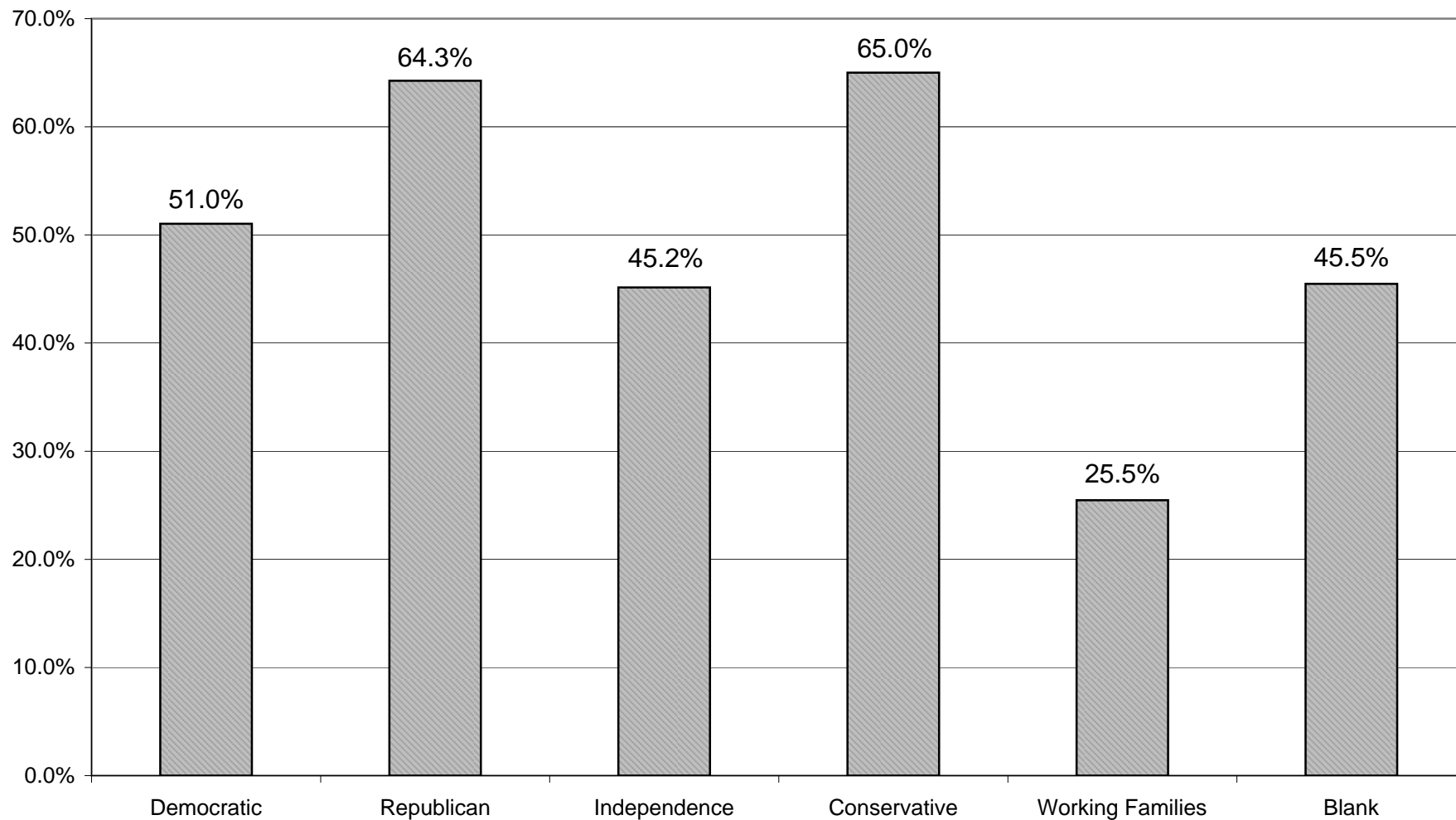
LT/LD SUMMARY
Part 2 of 2

LEGISLATIVE DISTRICT OR TOWN CITY	45-54			55-64			65+		
	VOTED	REGISTERED	TURNOUT	VOTED	REGISTERED	TURNOUT	VOTED	REGISTERED	TURNOUT
Leg. Dist. 06	332	588	56.46 %	401	575	69.74 %	414	538	76.95 %
Leg. Dist. 07	153	295	51.86 %	251	393	63.87 %	304	389	78.15 %
Leg. Dist. 21	1,068	2,394	44.61 %	1,225	2,035	60.20 %	1,146	1,698	67.49 %
Leg. Dist. 22	541	1,799	30.07 %	558	1,342	41.58 %	616	1,216	50.66 %
Leg. Dist. 23	1,157	1,905	60.73 %	1,424	1,975	72.10 %	1,303	1,574	82.78 %
Leg. Dist. 24	747	1,208	61.84 %	903	1,250	72.24 %	789	1,081	72.99 %
Leg. Dist. 25	799	1,772	45.09 %	867	1,540	56.30 %	1,045	1,632	64.03 %
Leg. Dist. 26	632	1,382	45.73 %	655	1,041	62.92 %	576	788	73.10 %
Leg. Dist. 27	1,067	2,707	39.42 %	1,135	2,161	52.52 %	1,154	1,906	60.55 %
Leg. Dist. 28	711	1,971	36.07 %	774	1,531	50.56 %	731	1,194	61.22 %
Leg. Dist. 29	827	2,184	37.87 %	1,021	1,896	53.85 %	1,058	1,718	61.58 %
TOTAL:	8,034	18,205	44.13 %	9,214	15,739	58.54 %	9,136	13,734	66.52 %
TOWNS									
Brighton	2,701	3,976	67.93 %	3,207	4,119	77.86 %	4,362	5,387	80.97 %
Chili	2,329	3,906	59.63 %	2,547	3,422	74.43 %	2,930	3,669	79.86 %
Clarkson	531	876	60.62 %	546	691	79.02 %	535	708	75.56 %
East Rochester	431	734	58.72 %	448	643	69.67 %	491	625	78.56 %
Gates	1,752	3,399	51.54 %	1,990	3,003	66.27 %	3,311	4,557	72.66 %
Greece	6,577	12,316	53.40 %	8,090	11,595	69.77 %	10,302	13,403	76.86 %
Hamlin	723	1,250	57.84 %	769	1,076	71.47 %	681	843	80.78 %
Henrietta	2,485	4,411	56.34 %	2,687	3,793	70.84 %	3,498	4,426	79.03 %
Irondequoit	3,924	6,503	60.34 %	4,649	6,398	72.66 %	5,995	7,992	75.01 %
Mendon	1,238	1,698	72.91 %	1,030	1,264	81.49 %	927	1,063	87.21 %
Ogden	1,732	2,965	58.41 %	1,749	2,370	73.80 %	1,786	2,202	81.11 %
Parma	1,367	2,367	57.75 %	1,395	1,891	73.77 %	1,551	1,983	78.21 %
Penfield	3,544	5,491	64.54 %	3,675	4,825	76.17 %	4,453	5,437	81.90 %
Perinton	4,737	7,080	66.91 %	5,162	6,445	80.09 %	6,376	7,332	86.96 %
Pittsford	3,012	4,327	69.61 %	3,009	3,771	79.79 %	4,278	4,942	86.56 %
Riga	594	966	61.49 %	585	778	75.19 %	608	685	88.76 %
Rush	411	625	65.76 %	440	544	80.88 %	483	531	90.96 %
Sweden	759	1,318	57.59 %	955	1,263	75.61 %	945	1,179	80.15 %
Webster	3,893	6,348	61.33 %	4,012	5,237	76.61 %	5,071	6,174	82.13 %
Wheatland	427	687	62.15 %	490	644	76.09 %	522	633	82.46 %
TOTAL:	43,167	71,243	60.59 %	47,435	63,772	74.38 %	59,105	73,771	80.12 %
GRAND TOTAL:	51,201	89,448	57.24 %	56,649	79,511	71.25 %	68,241	87,505	77.99 %

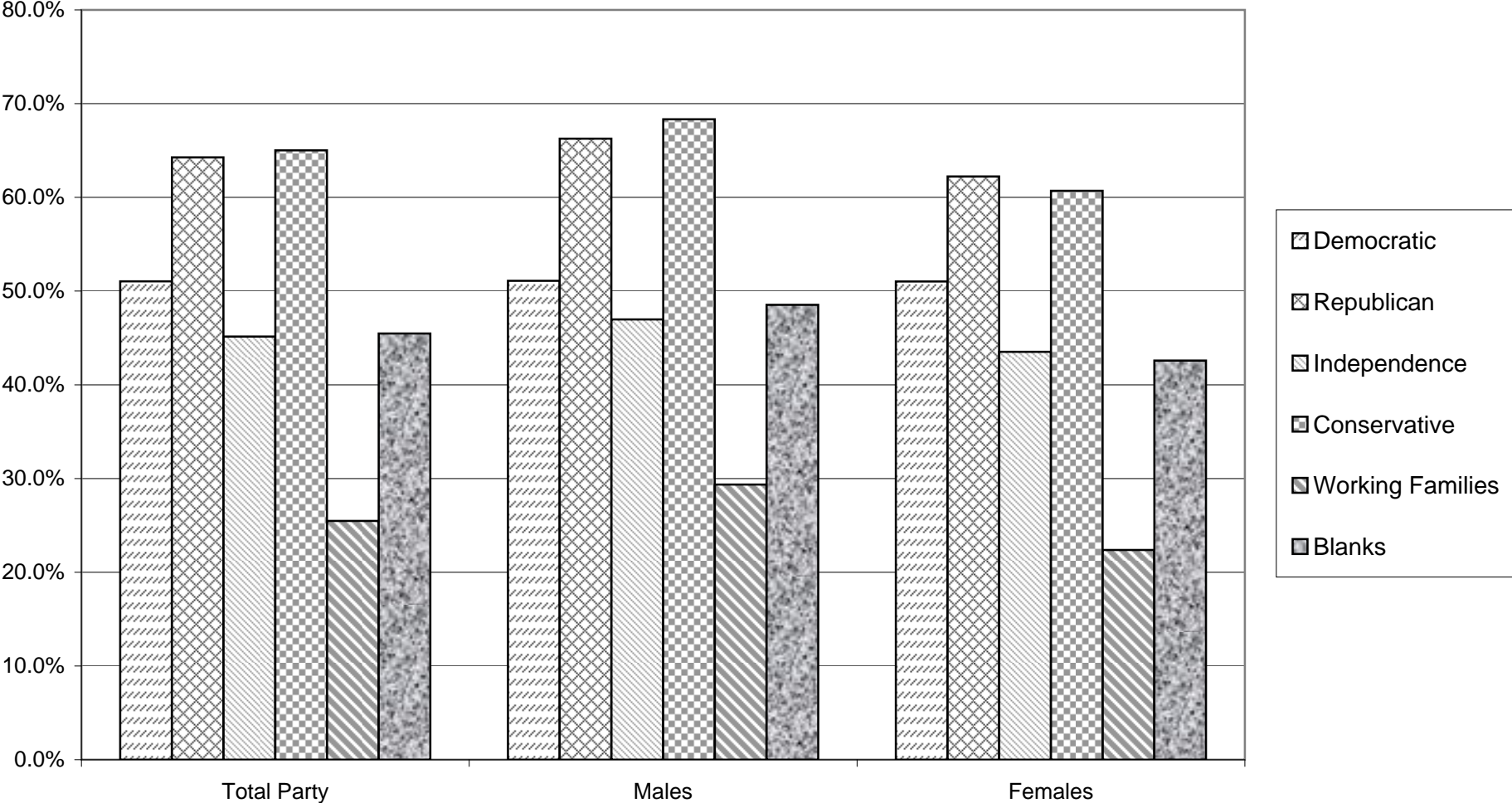
VOTER TURNOUT - TOTAL AND BY GENDER 2010 GENERAL ELECTION



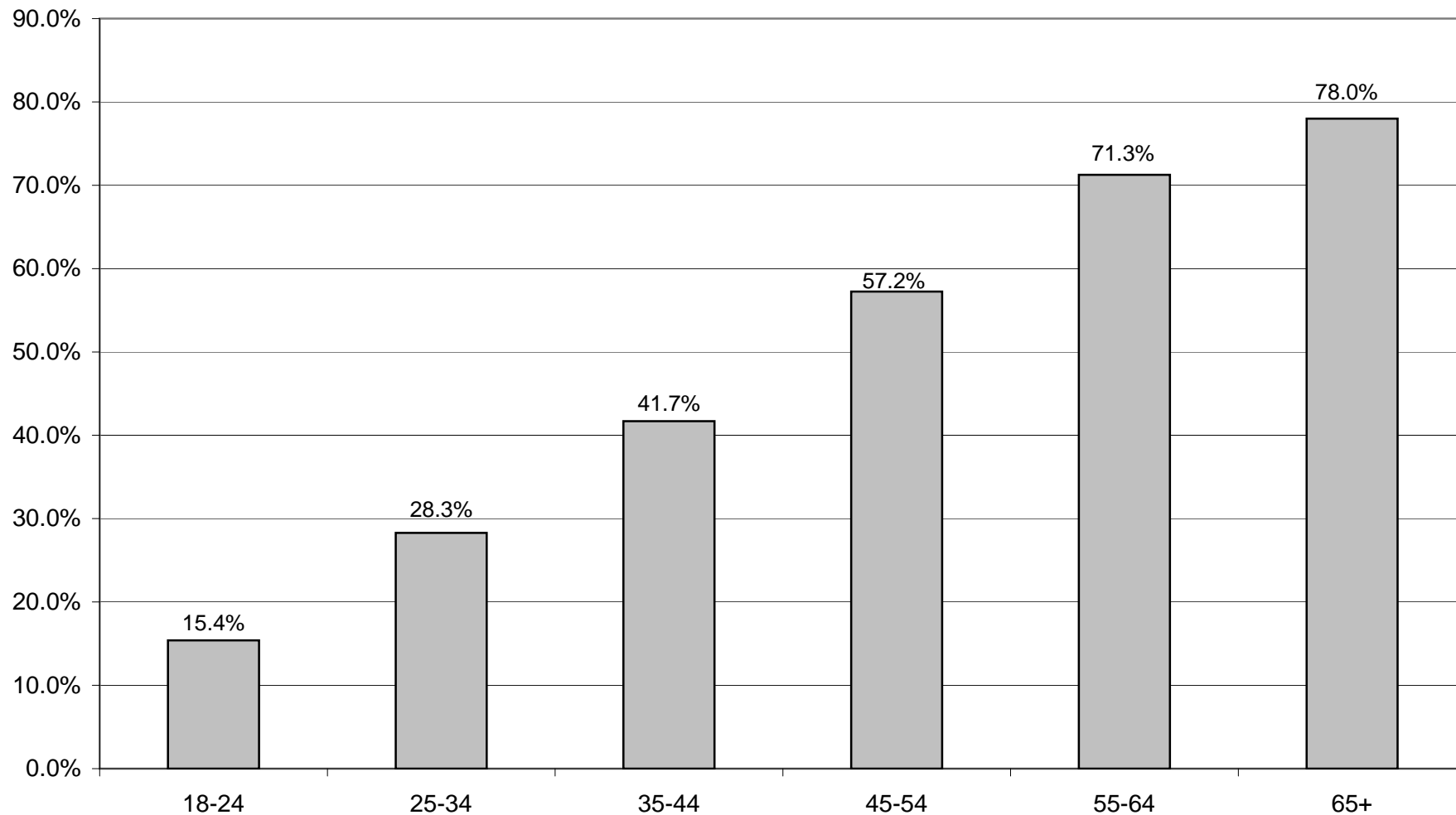
VOTER TURNOUT BY PARTY 2010 GENERAL ELECTION



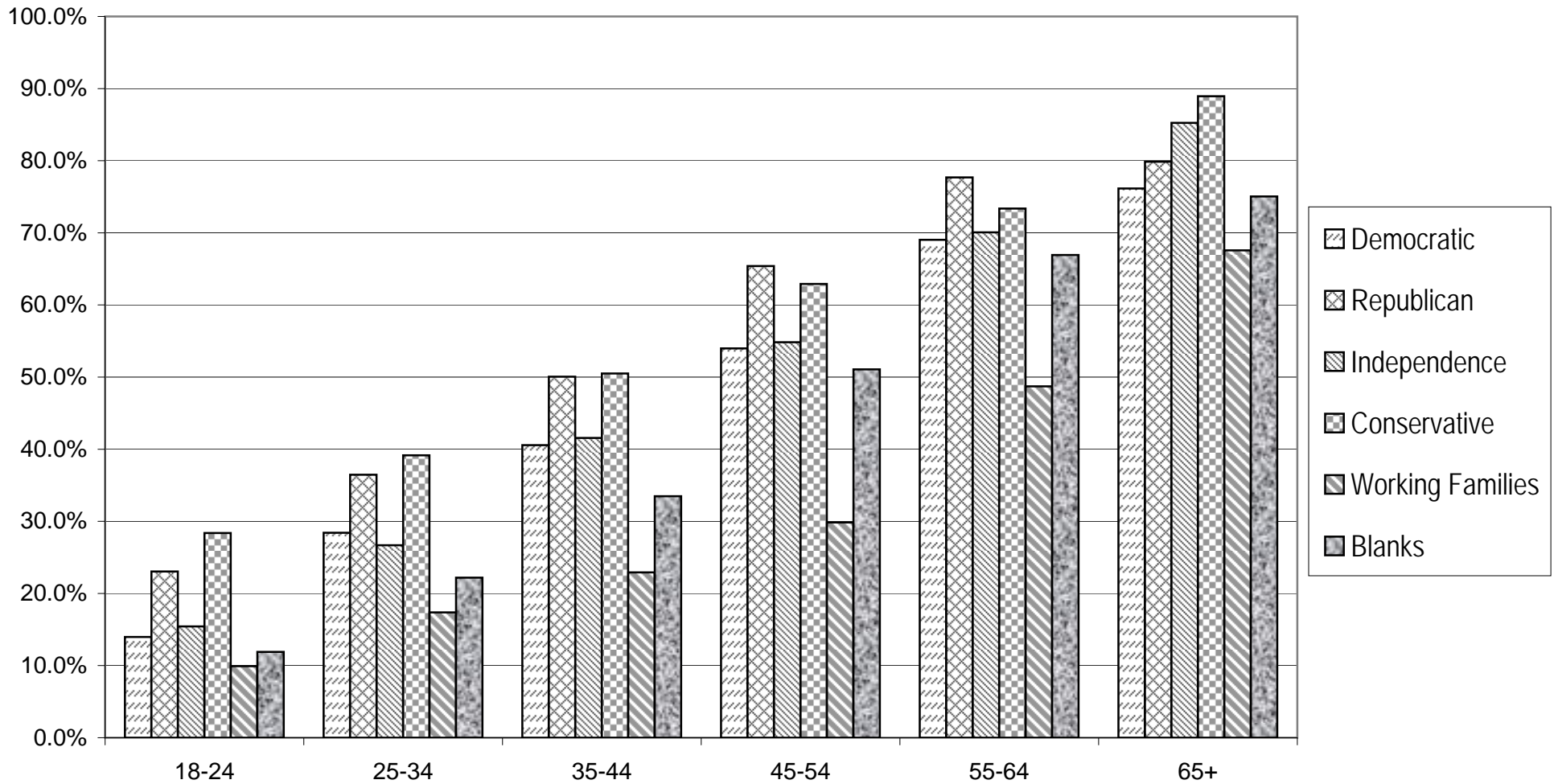
COMPARISON OF TOTAL AND GENDER TURNOUT 2010 GENERAL ELECTION



VOTER TURNOUT BY AGE GROUP 2010 GENERAL ELECTION



COMPARISON OF TURNOUT BY AGE GROUP 2010 GENERAL ELECTION



DEMOCRATIC SUMMARY

2010 GENERAL ELECTION
DEMOCRATIC TURNOUT BY GENDER

LT/LD SUMMARY

LEGISLATIVE DISTRICT OR TOWN CITY	TOTAL VOTERS			MALES			FEMALES		
	VOTED	REGISTERED	TURNOUT	VOTED	REGISTERED	TURNOUT	VOTED	REGISTERED	TURNOUT
Leg. Dist. 06	612	1,207	50.70 %	226	435	51.95 %	386	772	50.00 %
Leg. Dist. 07	347	659	52.66 %	129	253	50.99 %	218	406	53.69 %
Leg. Dist. 21	3,343	7,996	41.81 %	1,305	3,171	41.15 %	2,038	4,825	42.24 %
Leg. Dist. 22	2,049	6,843	29.94 %	732	2,740	26.72 %	1,317	4,103	32.10 %
Leg. Dist. 23	3,464	5,991	57.82 %	1,551	2,619	59.22 %	1,913	3,372	56.73 %
Leg. Dist. 24	2,350	3,793	61.96 %	1,000	1,571	63.65 %	1,350	2,222	60.76 %
Leg. Dist. 25	3,058	7,088	43.14 %	1,209	2,935	41.19 %	1,849	4,153	44.52 %
Leg. Dist. 26	1,499	3,734	40.14 %	558	1,417	39.38 %	941	2,317	40.61 %
Leg. Dist. 27	3,727	9,979	37.35 %	1,347	3,923	34.34 %	2,380	6,056	39.30 %
Leg. Dist. 28	1,947	5,794	33.60 %	764	2,253	33.91 %	1,183	3,541	33.41 %
Leg. Dist. 29	2,754	7,468	36.88 %	1,054	2,873	36.69 %	1,700	4,595	37.00 %
TOTAL:	25,150	60,552	41.53 %	9,875	24,190	40.82 %	15,275	36,362	42.01 %
TOWNS									
Brighton	6,438	9,604	67.03 %	2,527	3,722	67.89 %	3,911	5,882	66.49 %
Chili	3,148	5,888	53.46 %	1,281	2,398	53.42 %	1,867	3,490	53.50 %
Clarkson	507	986	51.42 %	207	385	53.77 %	300	601	49.92 %
East Rochester	666	1,267	52.57 %	246	497	49.50 %	420	770	54.55 %
Gates	3,277	6,578	49.82 %	1,266	2,566	49.34 %	2,011	4,012	50.12 %
Greece	9,455	18,985	49.80 %	3,662	7,180	51.00 %	5,793	11,805	49.07 %
Hamlin	589	1,244	47.35 %	236	480	49.17 %	353	764	46.20 %
Henrietta	4,067	7,620	53.37 %	1,636	3,039	53.83 %	2,431	4,581	53.07 %
Irondequoit	7,205	12,990	55.47 %	2,725	4,830	56.42 %	4,480	8,160	54.90 %
Mendon	1,053	1,762	59.76 %	405	679	59.65 %	648	1,083	59.83 %
Ogden	1,688	3,257	51.83 %	650	1,264	51.42 %	1,038	1,993	52.08 %
Parma	1,230	2,510	49.00 %	496	981	50.56 %	734	1,529	48.01 %
Penfield	4,509	7,452	60.51 %	1,750	2,866	61.06 %	2,759	4,586	60.16 %
Perinton	5,960	9,663	61.68 %	2,267	3,666	61.84 %	3,693	5,997	61.58 %
Pittsford	3,951	6,005	65.80 %	1,543	2,324	66.39 %	2,408	3,681	65.42 %
Riga	474	850	55.76 %	179	324	55.25 %	295	526	56.08 %
Rush	440	664	66.27 %	181	269	67.29 %	259	395	65.57 %
Sweden	1,004	1,822	55.10 %	400	727	55.02 %	604	1,095	55.16 %
Webster	4,945	8,418	58.74 %	1,929	3,196	60.36 %	3,016	5,222	57.76 %
Wheatland	534	936	57.05 %	235	377	62.33 %	299	559	53.49 %
TOTAL:	61,140	108,501	56.35 %	23,821	41,770	57.03 %	37,319	66,731	55.92 %
GRAND TOTAL:	86,290	169,053	51.04 %	33,696	65,960	51.09 %	52,594	103,093	51.02 %

2010 GENERAL ELECTION
DEMOCRATIC TURNOUT BY AGE

LT/LD SUMMARY
Part 1 of 2

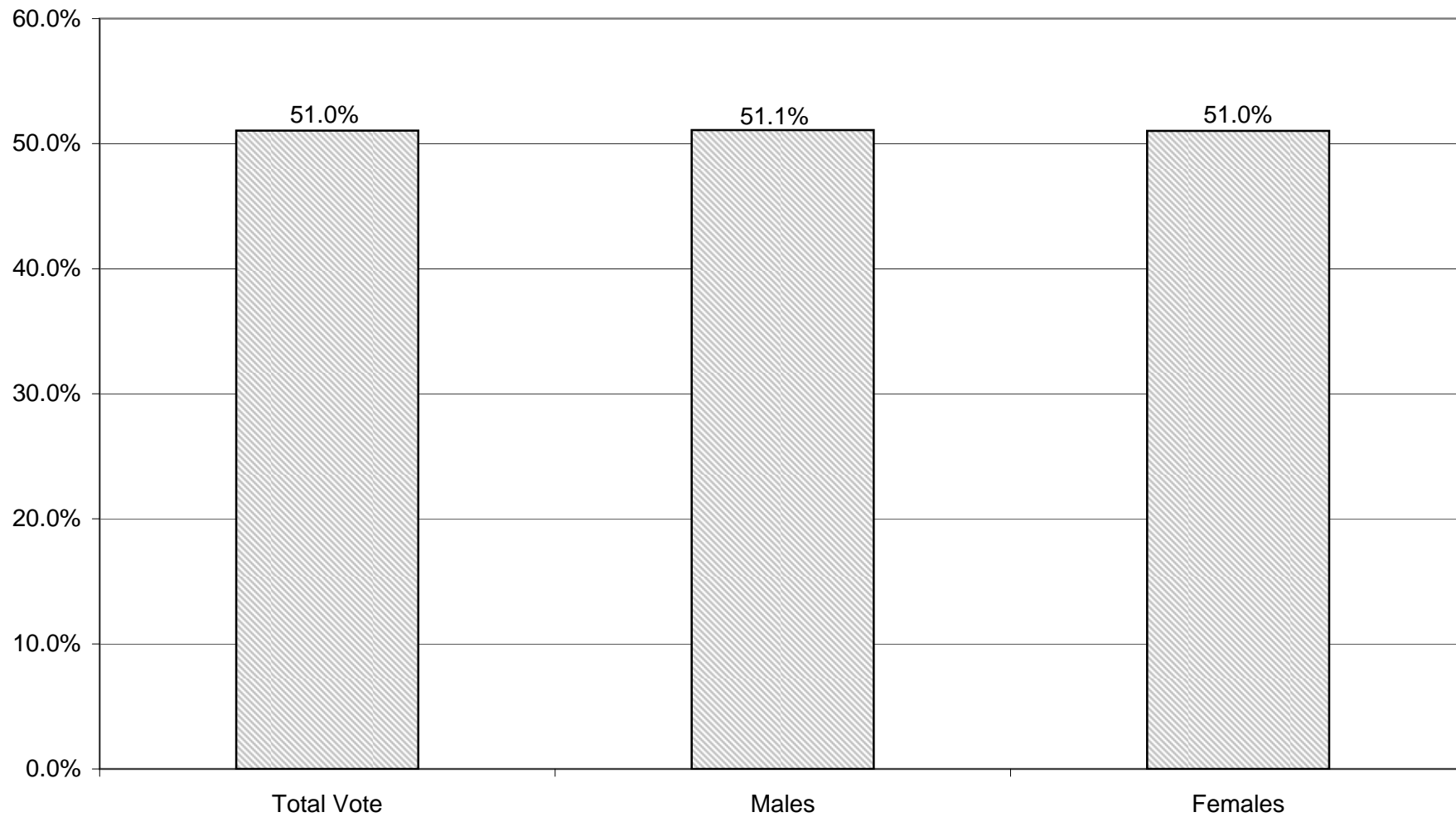
LEGISLATIVE DISTRICT OR TOWN CITY	NDOB			18-24			25-34			35-44		
	VOTED	REGISTERED	TURNOUT	VOTED	REGISTERED	TURNOUT	VOTED	REGISTERED	TURNOUT	VOTED	REGISTERED	TURNOUT
Leg. Dist. 06	7	14	50.00 %	11	92	11.96 %	65	231	28.14 %	94	197	47.72 %
Leg. Dist. 07	1	6	16.67 %	2	37	5.41 %	18	82	21.95 %	25	70	35.71 %
Leg. Dist. 21	51	70	72.86 %	107	814	13.14 %	447	1,659	26.94 %	548	1,526	35.91 %
Leg. Dist. 22	19	30	63.33 %	53	807	6.57 %	205	1,289	15.90 %	287	1,240	23.15 %
Leg. Dist. 23	42	54	77.78 %	74	465	15.91 %	642	1,538	41.74 %	497	957	51.93 %
Leg. Dist. 24	22	32	68.75 %	43	273	15.75 %	411	865	47.51 %	403	648	62.19 %
Leg. Dist. 25	40	56	71.43 %	95	785	12.10 %	368	1,278	28.79 %	391	1,160	33.71 %
Leg. Dist. 26	18	22	81.82 %	44	412	10.68 %	222	895	24.80 %	252	727	34.66 %
Leg. Dist. 27	32	58	55.17 %	132	1,126	11.72 %	374	1,784	20.96 %	548	1,818	30.14 %
Leg. Dist. 28	15	33	45.45 %	55	659	8.35 %	181	1,086	16.67 %	282	1,048	26.91 %
Leg. Dist. 29	33	56	58.93 %	60	848	7.08 %	259	1,322	19.59 %	332	1,275	26.04 %
TOTAL:	280	431	64.97 %	676	6,318	10.70 %	3,192	12,029	26.54 %	3,659	10,666	34.31 %
TOWNS												
Brighton	60	79	75.95 %	182	778	23.39 %	490	1,295	37.84 %	839	1,399	59.97 %
Chili	64	82	78.05 %	69	492	14.02 %	257	948	27.11 %	417	956	43.62 %
Clarkson	0	3	0.00 %	13	82	15.85 %	25	127	19.69 %	58	183	31.69 %
East Rochester	26	36	72.22 %	28	135	20.74 %	83	257	32.30 %	101	222	45.50 %
Gates	16	37	43.24 %	49	453	10.82 %	249	1,023	24.34 %	368	1,003	36.69 %
Greece	148	236	62.71 %	250	1,773	14.10 %	754	2,948	25.58 %	984	2,786	35.32 %
Hamlin	0	6	0.00 %	15	137	10.95 %	52	190	27.37 %	73	192	38.02 %
Henrietta	15	24	62.50 %	142	781	18.18 %	354	1,168	30.31 %	562	1,246	45.10 %
Irondequoit	115	193	59.59 %	159	1,065	14.93 %	643	1,900	33.84 %	862	1,976	43.62 %
Mendon	1	2	50.00 %	35	261	13.41 %	58	182	31.87 %	142	303	46.86 %
Ogden	18	31	58.06 %	41	288	14.24 %	143	494	28.95 %	205	514	39.88 %
Parma	7	13	53.85 %	35	278	12.59 %	65	354	18.36 %	145	387	37.47 %
Penfield	49	86	56.98 %	96	614	15.64 %	272	879	30.94 %	566	1,141	49.61 %
Perinton	15	32	46.88 %	170	1,008	16.87 %	419	1,198	34.97 %	808	1,551	52.10 %
Pittsford	22	34	64.71 %	99	563	17.58 %	192	615	31.22 %	480	884	54.30 %
Riga	1	3	33.33 %	12	71	16.90 %	34	122	27.87 %	47	128	36.72 %
Rush	15	16	93.75 %	26	76	34.21 %	23	68	33.82 %	45	80	56.25 %
Sweden	8	11	72.73 %	30	183	16.39 %	81	283	28.62 %	127	279	45.52 %
Webster	76	106	71.70 %	99	622	15.92 %	322	1,033	31.17 %	582	1,391	41.84 %
Wheatland	3	5	60.00 %	20	103	19.42 %	37	137	27.01 %	44	115	38.26 %
TOTAL:	659	1,035	63.67 %	1,570	9,763	16.08 %	4,553	15,221	29.91 %	7,455	16,736	44.54 %
GRAND TOTAL:	939	1,466	64.05 %	2,246	16,081	13.97 %	7,745	27,250	28.42 %	11,114	27,402	40.56 %

2010 GENERAL ELECTION
DEMOCRATIC TURNOUT BY AGE

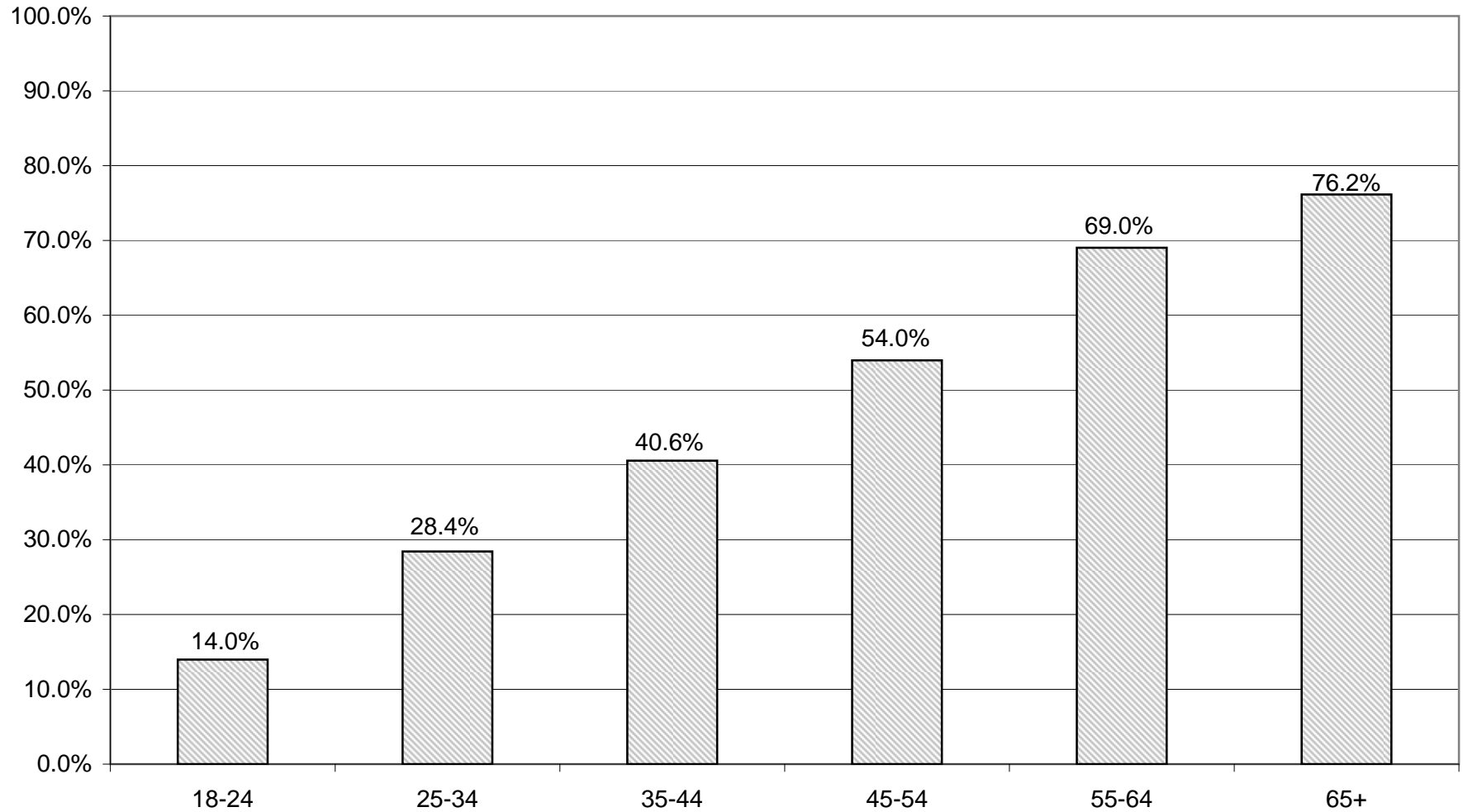
LT/LD SUMMARY
Part 2 of 2

LEGISLATIVE DISTRICT OR TOWN CITY	45-54			55-64			65+		
	VOTED	REGISTERED	TURNOUT	VOTED	REGISTERED	TURNOUT	VOTED	REGISTERED	TURNOUT
Leg. Dist. 06	118	231	51.08 %	148	228	64.91 %	169	214	78.97 %
Leg. Dist. 07	53	114	46.49 %	112	173	64.74 %	136	177	76.84 %
Leg. Dist. 21	685	1,547	44.28 %	798	1,320	60.45 %	707	1,060	66.70 %
Leg. Dist. 22	475	1,412	33.64 %	473	1,070	44.21 %	537	995	53.97 %
Leg. Dist. 23	640	1,000	64.00 %	837	1,111	75.34 %	732	866	84.53 %
Leg. Dist. 24	456	686	66.47 %	582	763	76.28 %	433	526	82.32 %
Leg. Dist. 25	657	1,380	47.61 %	672	1,147	58.59 %	835	1,282	65.13 %
Leg. Dist. 26	340	745	45.64 %	344	561	61.32 %	279	372	75.00 %
Leg. Dist. 27	860	2,080	41.35 %	873	1,626	53.69 %	908	1,487	61.06 %
Leg. Dist. 28	475	1,264	37.58 %	471	962	48.96 %	468	742	63.07 %
Leg. Dist. 29	610	1,507	40.48 %	706	1,280	55.16 %	754	1,180	63.90 %
TOTAL:	5,369	11,966	44.87 %	6,016	10,241	58.74 %	5,958	8,901	66.94 %
TOWNS									
Brighton	1,289	1,787	72.13 %	1,619	1,983	81.64 %	1,959	2,283	85.81 %
Chili	594	1,094	54.30 %	808	1,119	72.21 %	939	1,197	78.45 %
Clarkson	109	187	58.29 %	158	205	77.07 %	144	199	72.36 %
East Rochester	130	212	61.32 %	142	216	65.74 %	156	189	82.54 %
Gates	574	1,135	50.57 %	744	1,143	65.09 %	1,277	1,784	71.58 %
Greece	1,780	3,517	50.61 %	2,514	3,673	68.45 %	3,025	4,052	74.65 %
Hamlin	133	270	49.26 %	172	249	69.08 %	144	200	72.00 %
Henrietta	797	1,461	54.55 %	976	1,368	71.35 %	1,221	1,572	77.67 %
Irondequoit	1,400	2,360	59.32 %	1,792	2,490	71.97 %	2,234	3,006	74.32 %
Mendon	315	431	73.09 %	291	350	83.14 %	211	233	90.56 %
Ogden	349	666	52.40 %	470	654	71.87 %	462	610	75.74 %
Parma	289	541	53.42 %	333	472	70.55 %	356	465	76.56 %
Penfield	925	1,465	63.14 %	1,190	1,568	75.89 %	1,411	1,699	83.05 %
Perinton	1,247	1,909	65.32 %	1,539	1,980	77.73 %	1,762	1,985	88.77 %
Pittsford	888	1,243	71.44 %	1,067	1,312	81.33 %	1,203	1,354	88.85 %
Riga	114	200	57.00 %	144	173	83.24 %	122	153	79.74 %
Rush	96	140	68.57 %	128	157	81.53 %	107	127	84.25 %
Sweden	172	322	53.42 %	300	388	77.32 %	286	356	80.34 %
Webster	1,004	1,653	60.74 %	1,251	1,653	75.68 %	1,611	1,960	82.19 %
Wheatland	105	191	54.97 %	140	179	78.21 %	185	206	89.81 %
TOTAL:	12,310	20,784	59.23 %	15,778	21,332	73.96 %	18,815	23,630	79.62 %
GRAND TOTAL:	17,679	32,750	53.98 %	21,794	31,573	69.03 %	24,773	32,531	76.15 %

DEMOCRATIC TURNOUT - TOTAL AND GENDER 2010 GENERAL ELECTION



DEMOCRATIC TURNOUT BY AGE GROUP 2010 GENERAL ELECTION



REPUBLICAN SUMMARY

2010 GENERAL ELECTION
REPUBLICAN TURNOUT BY GENDER

LT/LD SUMMARY

LEGISLATIVE DISTRICT OR TOWN CITY	TOTAL VOTERS			MALES			FEMALES		
	VOTED	REGISTERED	TURNOUT	VOTED	REGISTERED	TURNOUT	VOTED	REGISTERED	TURNOUT
Leg. Dist. 06	494	797	61.98 %	249	383	65.01 %	245	414	59.18 %
Leg. Dist. 07	269	439	61.28 %	141	223	63.23 %	128	216	59.26 %
Leg. Dist. 21	873	1,647	53.01 %	447	813	54.98 %	426	834	51.08 %
Leg. Dist. 22	141	521	27.06 %	61	247	24.70 %	80	274	29.20 %
Leg. Dist. 23	1,220	2,069	58.97 %	690	1,164	59.28 %	530	905	58.56 %
Leg. Dist. 24	635	1,111	57.16 %	308	543	56.72 %	327	568	57.57 %
Leg. Dist. 25	346	764	45.29 %	209	421	49.64 %	137	343	39.94 %
Leg. Dist. 26	670	1,249	53.64 %	332	627	52.95 %	338	622	54.34 %
Leg. Dist. 27	470	1,049	44.80 %	253	538	47.03 %	217	511	42.47 %
Leg. Dist. 28	531	1,189	44.66 %	280	606	46.20 %	251	583	43.05 %
Leg. Dist. 29	595	1,305	45.59 %	293	641	45.71 %	302	664	45.48 %
TOTAL:	6,244	12,140	51.43 %	3,263	6,206	52.58 %	2,981	5,934	50.24 %
TOWNS									
Brighton	3,852	5,732	67.20 %	1,955	2,808	69.62 %	1,897	2,924	64.88 %
Chili	4,601	7,104	64.77 %	2,356	3,541	66.53 %	2,245	3,563	63.01 %
Clarkson	1,062	1,649	64.40 %	575	839	68.53 %	487	810	60.12 %
East Rochester	736	1,185	62.11 %	368	580	63.45 %	368	605	60.83 %
Gates	3,436	5,724	60.03 %	1,734	2,777	62.44 %	1,702	2,947	57.75 %
Greece	13,824	22,564	61.27 %	7,135	11,287	63.21 %	6,689	11,277	59.32 %
Hamlin	1,515	2,359	64.22 %	817	1,230	66.42 %	698	1,129	61.82 %
Henrietta	4,574	7,180	63.70 %	2,418	3,646	66.32 %	2,156	3,534	61.01 %
Irondequoit	6,690	10,445	64.05 %	3,386	5,120	66.13 %	3,304	5,325	62.05 %
Mendon	1,891	2,717	69.60 %	1,027	1,457	70.49 %	864	1,260	68.57 %
Ogden	3,273	5,073	64.52 %	1,695	2,538	66.78 %	1,578	2,535	62.25 %
Parma	2,638	4,220	62.51 %	1,383	2,176	63.56 %	1,255	2,044	61.40 %
Penfield	6,264	9,153	68.44 %	3,274	4,670	70.11 %	2,990	4,483	66.70 %
Perinton	9,124	12,848	71.01 %	4,773	6,546	72.91 %	4,351	6,302	69.04 %
Pittsford	5,542	7,671	72.25 %	2,914	3,931	74.13 %	2,628	3,740	70.27 %
Riga	1,178	1,722	68.41 %	594	855	69.47 %	584	867	67.36 %
Rush	763	1,056	72.25 %	407	545	74.68 %	356	511	69.67 %
Sweden	1,525	2,379	64.10 %	799	1,201	66.53 %	726	1,178	61.63 %
Webster	6,829	10,240	66.69 %	3,593	5,164	69.58 %	3,236	5,076	63.75 %
Wheatland	802	1,228	65.31 %	411	603	68.16 %	391	625	62.56 %
TOTAL:	80,119	122,249	65.54 %	41,614	61,514	67.65 %	38,505	60,735	63.40 %
GRAND TOTAL:	86,363	134,389	64.26 %	44,877	67,720	66.27 %	41,486	66,669	62.23 %

2010 GENERAL ELECTION
REPUBLICAN TURNOUT BY AGE

LT/LD SUMMARY
Part 1 of 2

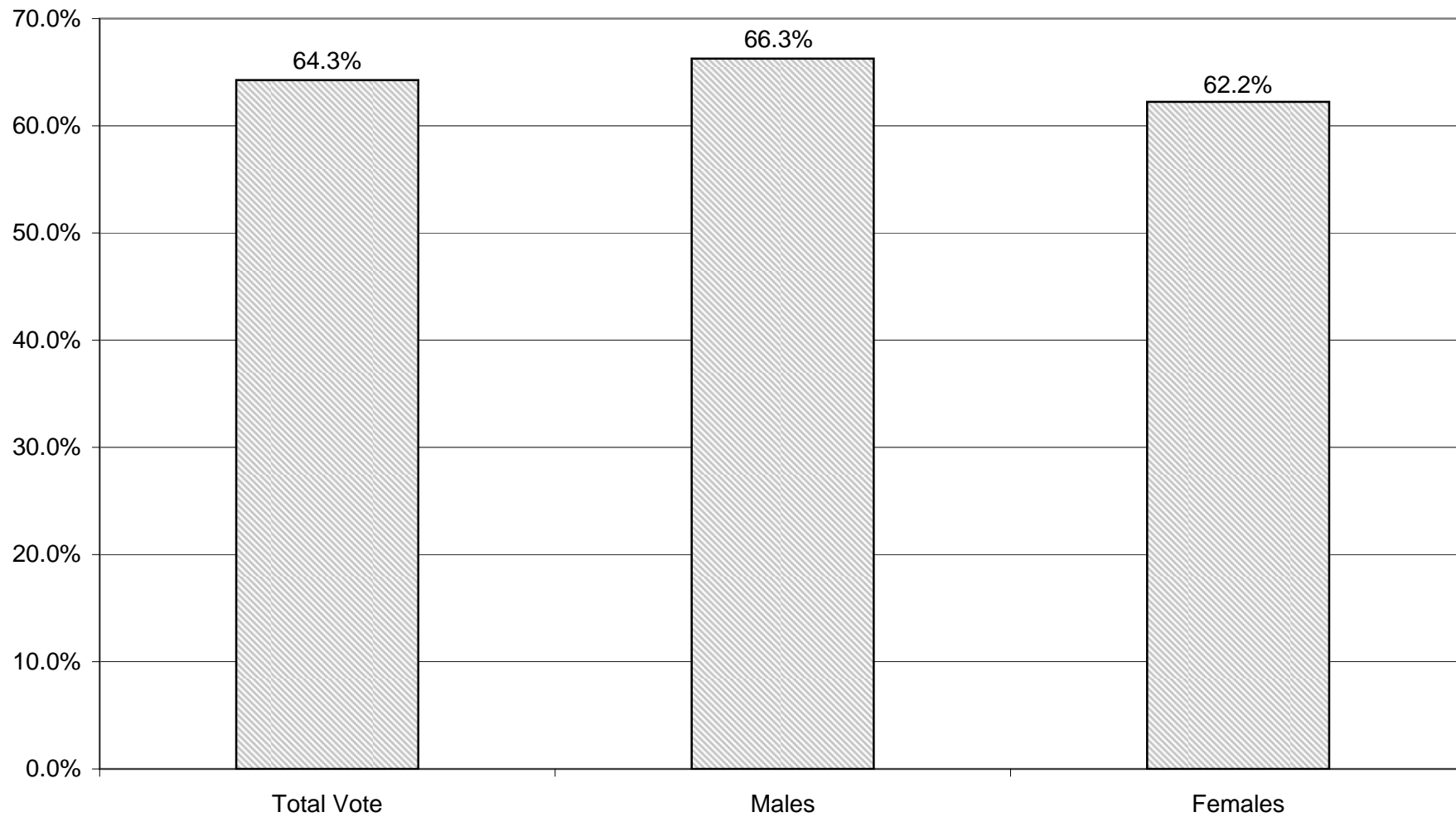
LEGISLATIVE DISTRICT OR TOWN CITY	NDOB			18-24			25-34			35-44		
	VOTED	REGISTERED	TURNOUT	VOTED	REGISTERED	TURNOUT	VOTED	REGISTERED	TURNOUT	VOTED	REGISTERED	TURNOUT
Leg. Dist. 06	19	24	79.17 %	8	39	20.51 %	37	106	34.91 %	54	102	52.94 %
Leg. Dist. 07	9	16	56.25 %	0	12	0.00 %	13	38	34.21 %	22	47	46.81 %
Leg. Dist. 21	50	91	54.95 %	10	77	12.99 %	124	293	42.32 %	113	255	44.31 %
Leg. Dist. 22	4	11	36.36 %	4	36	11.11 %	10	67	14.93 %	14	90	15.56 %
Leg. Dist. 23	49	70	70.00 %	19	93	20.43 %	206	472	43.64 %	179	343	52.19 %
Leg. Dist. 24	25	41	60.98 %	5	41	12.20 %	93	192	48.44 %	59	132	44.70 %
Leg. Dist. 25	14	34	41.18 %	7	59	11.86 %	39	134	29.10 %	40	95	42.11 %
Leg. Dist. 26	26	45	57.78 %	13	66	19.70 %	54	173	31.21 %	85	211	40.28 %
Leg. Dist. 27	19	42	45.24 %	14	76	18.42 %	55	167	32.93 %	44	134	32.84 %
Leg. Dist. 28	27	44	61.36 %	7	55	12.73 %	36	156	23.08 %	46	170	27.06 %
Leg. Dist. 29	36	66	54.55 %	6	64	9.38 %	41	138	29.71 %	53	191	27.75 %
TOTAL:	278	484	57.44 %	93	618	15.05 %	708	1,936	36.57 %	709	1,770	40.06 %
TOWNS												
Brighton	145	223	65.02 %	60	222	27.03 %	256	605	42.31 %	398	700	56.86 %
Chili	122	183	66.67 %	112	446	25.11 %	300	744	40.32 %	545	1,104	49.37 %
Clarkson	3	3	100.00 %	30	104	28.85 %	62	154	40.26 %	144	317	45.43 %
East Rochester	43	57	75.44 %	14	59	23.73 %	53	133	39.85 %	85	184	46.20 %
Gates	46	89	51.69 %	52	246	21.14 %	195	568	34.33 %	329	772	42.62 %
Greece	400	669	59.79 %	296	1,257	23.55 %	672	2,171	30.95 %	1,381	3,057	45.18 %
Hamlin	14	21	66.67 %	40	148	27.03 %	80	232	34.48 %	173	365	47.40 %
Henrietta	25	50	50.00 %	89	388	22.94 %	295	793	37.20 %	557	1,093	50.96 %
Irondequoit	245	399	61.40 %	103	462	22.29 %	389	1,035	37.58 %	704	1,409	49.96 %
Mendon	7	12	58.33 %	35	183	19.13 %	63	196	32.14 %	220	403	54.59 %
Ogden	49	74	66.22 %	75	307	24.43 %	199	525	37.90 %	415	818	50.73 %
Parma	14	34	41.18 %	55	280	19.64 %	143	396	36.11 %	295	617	47.81 %
Penfield	133	195	68.21 %	127	463	27.43 %	295	739	39.92 %	793	1,412	56.16 %
Perinton	35	70	50.00 %	156	710	21.97 %	409	1,001	40.86 %	1,100	1,940	56.70 %
Pittsford	58	88	65.91 %	91	379	24.01 %	150	438	34.25 %	598	1,056	56.63 %
Riga	5	12	41.67 %	31	104	29.81 %	53	141	37.59 %	129	241	53.53 %
Rush	36	49	73.47 %	16	48	33.33 %	19	77	24.68 %	67	125	53.60 %
Sweden	20	34	58.82 %	36	152	23.68 %	86	250	34.40 %	166	318	52.20 %
Webster	128	194	65.98 %	127	506	25.10 %	314	854	36.77 %	876	1,658	52.83 %
Wheatland	9	12	75.00 %	12	76	15.79 %	47	144	32.64 %	83	156	53.21 %
TOTAL:	1,537	2,468	62.28 %	1,557	6,540	23.81 %	4,080	11,196	36.44 %	9,058	17,745	51.05 %
GRAND TOTAL:	1,815	2,952	61.48 %	1,650	7,158	23.05 %	4,788	13,132	36.46 %	9,767	19,515	50.05 %

2010 GENERAL ELECTION
REPUBLICAN TURNOUT BY AGE

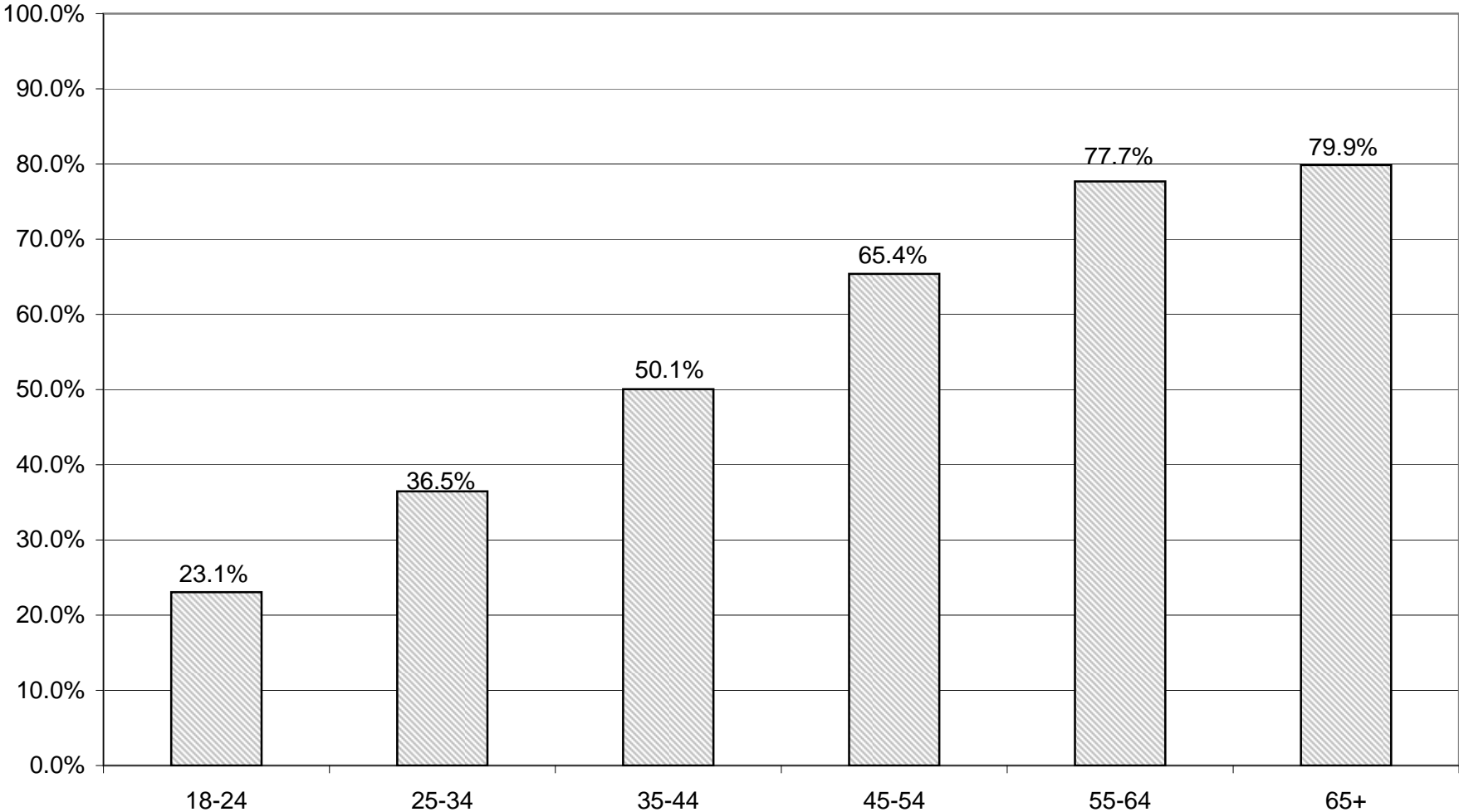
LT/LD SUMMARY
Part 2 of 2

LEGISLATIVE DISTRICT OR TOWN CITY	45-54			55-64			65+		
	VOTED	REGISTERED	TURNOUT	VOTED	REGISTERED	TURNOUT	VOTED	REGISTERED	TURNOUT
Leg. Dist. 06	102	161	63.35 %	121	159	76.10 %	153	206	74.27 %
Leg. Dist. 07	52	88	59.09 %	67	99	67.68 %	106	139	76.26 %
Leg. Dist. 21	153	301	50.83 %	177	274	64.60 %	246	356	69.10 %
Leg. Dist. 22	32	122	26.23 %	30	84	35.71 %	47	111	42.34 %
Leg. Dist. 23	212	371	57.14 %	244	339	71.98 %	311	381	81.63 %
Leg. Dist. 24	108	187	57.75 %	131	193	67.88 %	214	325	65.85 %
Leg. Dist. 25	54	128	42.19 %	74	141	52.48 %	118	173	68.21 %
Leg. Dist. 26	141	275	51.27 %	152	211	72.04 %	199	268	74.25 %
Leg. Dist. 27	95	218	43.58 %	105	189	55.56 %	138	223	61.88 %
Leg. Dist. 28	109	261	41.76 %	149	243	61.32 %	157	260	60.38 %
Leg. Dist. 29	98	257	38.13 %	164	262	62.60 %	197	327	60.24 %
TOTAL:	1,156	2,369	48.80 %	1,414	2,194	64.45 %	1,886	2,769	68.11 %
TOWNS									
Brighton	717	1,018	70.43 %	737	971	75.90 %	1,539	1,993	77.22 %
Chili	1,112	1,642	67.72 %	956	1,190	80.34 %	1,454	1,795	81.00 %
Clarkson	264	377	70.03 %	252	293	86.01 %	307	401	76.56 %
East Rochester	165	263	62.74 %	161	206	78.16 %	215	283	75.97 %
Gates	670	1,123	59.66 %	695	973	71.43 %	1,449	1,953	74.19 %
Greece	2,792	4,632	60.28 %	3,065	4,099	74.77 %	5,218	6,679	78.13 %
Hamlin	388	588	65.99 %	395	495	79.80 %	425	510	83.33 %
Henrietta	1,040	1,596	65.16 %	985	1,281	76.89 %	1,583	1,979	79.99 %
Irondequoit	1,326	1,999	66.33 %	1,410	1,843	76.51 %	2,513	3,298	76.20 %
Mendon	591	778	75.96 %	443	541	81.89 %	532	604	88.08 %
Ogden	828	1,277	64.84 %	767	938	81.77 %	940	1,134	82.89 %
Parma	629	986	63.79 %	623	784	79.46 %	879	1,123	78.27 %
Penfield	1,577	2,280	69.17 %	1,294	1,588	81.49 %	2,045	2,476	82.59 %
Perinton	2,164	3,035	71.30 %	2,039	2,403	84.85 %	3,221	3,689	87.31 %
Pittsford	1,343	1,811	74.16 %	1,145	1,394	82.14 %	2,157	2,505	86.11 %
Riga	311	451	68.96 %	285	370	77.03 %	364	403	90.32 %
Rush	192	276	69.57 %	177	202	87.62 %	256	279	91.76 %
Sweden	355	526	67.49 %	376	491	76.58 %	486	608	79.93 %
Webster	1,663	2,487	66.87 %	1,427	1,754	81.36 %	2,294	2,787	82.31 %
Wheatland	189	266	71.05 %	201	248	81.05 %	261	326	80.06 %
TOTAL:	18,316	27,411	66.82 %	17,433	22,064	79.01 %	28,138	34,825	80.80 %
GRAND TOTAL:	19,472	29,780	65.39 %	18,847	24,258	77.69 %	30,024	37,594	79.86 %

REPUBLICAN TURNOUT - TOTAL AND GENDER 2010 GENERAL ELECTION



REPUBLICAN TURNOUT BY AGE GROUP 2010 GENERAL ELECTION



INDEPENDENCE SUMMARY

2010 GENERAL ELECTION
INDEPENDENCE TURNOUT BY GENDER

LT/LD SUMMARY

LEGISLATIVE DISTRICT OR TOWN CITY	TOTAL VOTERS			MALES			FEMALES		
	VOTED	REGISTERED	TURNOUT	VOTED	REGISTERED	TURNOUT	VOTED	REGISTERED	TURNOUT
Leg. Dist. 06	68	130	52.31 %	35	59	59.32 %	33	71	46.48 %
Leg. Dist. 07	43	79	54.43 %	17	33	51.52 %	26	46	56.52 %
Leg. Dist. 21	190	490	38.78 %	87	230	37.83 %	103	260	39.62 %
Leg. Dist. 22	24	166	14.46 %	15	71	21.13 %	9	95	9.47 %
Leg. Dist. 23	231	553	41.77 %	121	263	46.01 %	110	290	37.93 %
Leg. Dist. 24	124	288	43.06 %	69	165	41.82 %	55	123	44.72 %
Leg. Dist. 25	82	237	34.60 %	43	136	31.62 %	39	101	38.61 %
Leg. Dist. 26	96	263	36.50 %	52	137	37.96 %	44	126	34.92 %
Leg. Dist. 27	98	331	29.61 %	55	178	30.90 %	43	153	28.10 %
Leg. Dist. 28	86	299	28.76 %	47	143	32.87 %	39	156	25.00 %
Leg. Dist. 29	83	268	30.97 %	46	141	32.62 %	37	127	29.13 %
TOTAL:	1,125	3,104	36.24 %	587	1,556	37.72 %	538	1,548	34.75 %
TOWNS									
Brighton	410	804	51.00 %	180	356	50.56 %	230	448	51.34 %
Chili	312	721	43.27 %	153	350	43.71 %	159	371	42.86 %
Clarkson	84	182	46.15 %	45	89	50.56 %	39	93	41.94 %
East Rochester	102	209	48.80 %	56	113	49.56 %	46	96	47.92 %
Gates	320	729	43.90 %	164	354	46.33 %	156	375	41.60 %
Greece	1,122	2,608	43.02 %	576	1,200	48.00 %	546	1,408	38.78 %
Hamlin	103	270	38.15 %	56	131	42.75 %	47	139	33.81 %
Henrietta	363	879	41.30 %	163	409	39.85 %	200	470	42.55 %
Irondequoit	737	1,480	49.80 %	343	676	50.74 %	394	804	49.00 %
Mendon	155	284	54.58 %	76	131	58.02 %	79	153	51.63 %
Ogden	233	567	41.09 %	116	272	42.65 %	117	295	39.66 %
Parma	209	454	46.04 %	108	222	48.65 %	101	232	43.53 %
Penfield	545	1,077	50.60 %	265	518	51.16 %	280	559	50.09 %
Perinton	691	1,302	53.07 %	334	577	57.89 %	357	725	49.24 %
Pittsford	402	712	56.46 %	171	296	57.77 %	231	416	55.53 %
Riga	87	187	46.52 %	47	91	51.65 %	40	96	41.67 %
Rush	39	92	42.39 %	21	42	50.00 %	18	50	36.00 %
Sweden	138	311	44.37 %	69	151	45.70 %	69	160	43.13 %
Webster	624	1,310	47.63 %	310	651	47.62 %	314	659	47.65 %
Wheatland	68	147	46.26 %	38	73	52.05 %	30	74	40.54 %
TOTAL:	6,744	14,325	47.08 %	3,291	6,702	49.10 %	3,453	7,623	45.30 %
GRAND TOTAL:	7,869	17,429	45.15 %	3,878	8,258	46.96 %	3,991	9,171	43.52 %

2010 GENERAL ELECTION
INDEPENDENCE TURNOUT BY AGE

LT/LD SUMMARY
Part 1 of 2

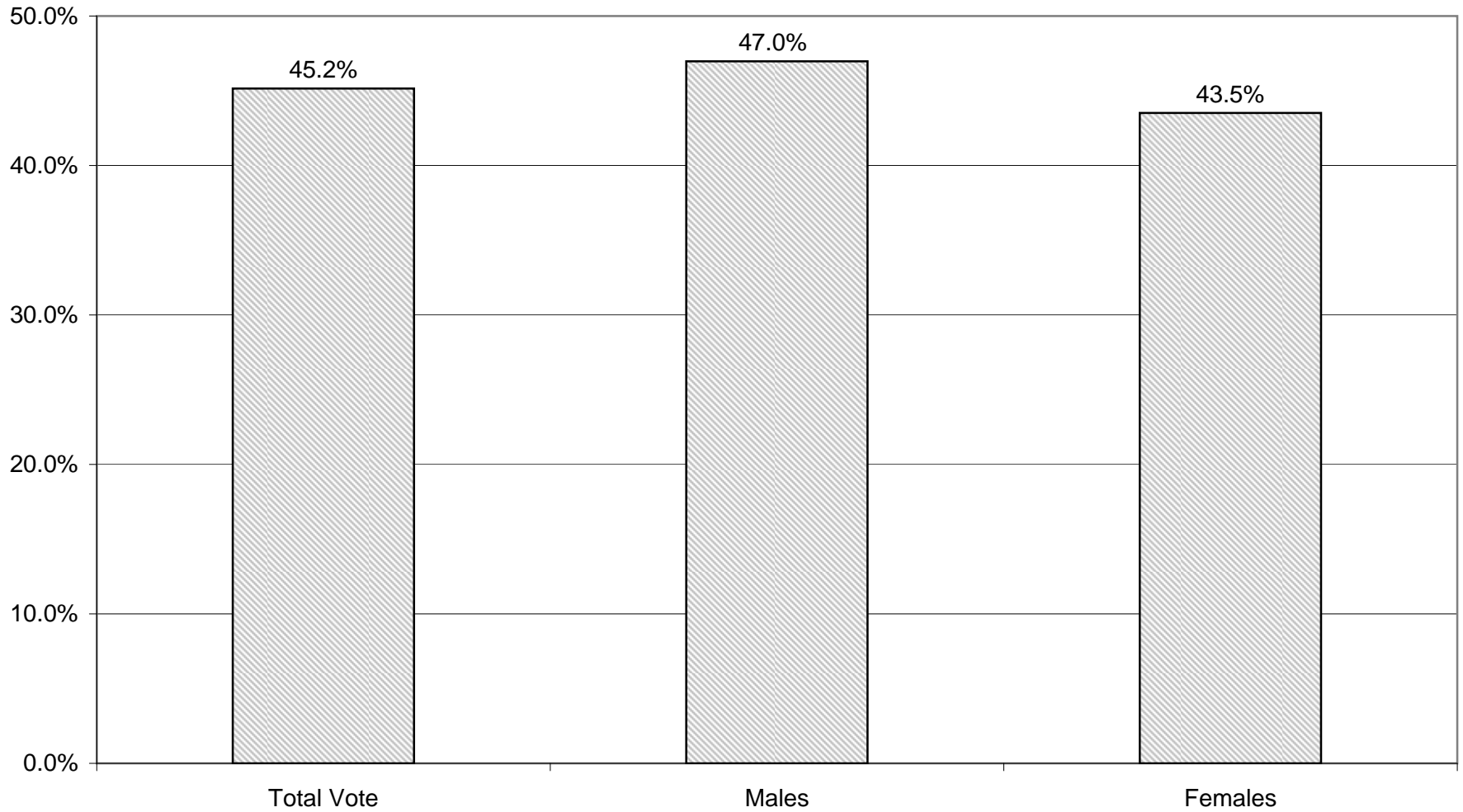
LEGISLATIVE DISTRICT OR TOWN CITY	NDOB			18-24			25-34			35-44		
	VOTED	REGISTERED	TURNOUT	VOTED	REGISTERED	TURNOUT	VOTED	REGISTERED	TURNOUT	VOTED	REGISTERED	TURNOUT
Leg. Dist. 06	0	0	0.00 %	2	13	15.38 %	15	38	39.47 %	12	26	46.15 %
Leg. Dist. 07	0	0	0.00 %	0	3	0.00 %	7	17	41.18 %	2	9	22.22 %
Leg. Dist. 21	0	0	0.00 %	5	65	7.69 %	42	138	30.43 %	42	104	40.38 %
Leg. Dist. 22	0	0	0.00 %	0	32	0.00 %	6	47	12.77 %	5	32	15.63 %
Leg. Dist. 23	0	0	0.00 %	11	70	15.71 %	64	224	28.57 %	48	100	48.00 %
Leg. Dist. 24	2	2	100.00 %	2	26	7.69 %	26	100	26.00 %	29	67	43.28 %
Leg. Dist. 25	0	0	0.00 %	4	44	9.09 %	17	58	29.31 %	17	41	41.46 %
Leg. Dist. 26	0	0	0.00 %	5	37	13.51 %	17	82	20.73 %	10	42	23.81 %
Leg. Dist. 27	0	0	0.00 %	3	56	5.36 %	12	69	17.39 %	21	68	30.88 %
Leg. Dist. 28	1	1	100.00 %	2	40	5.00 %	16	83	19.28 %	16	59	27.12 %
Leg. Dist. 29	0	0	0.00 %	8	44	18.18 %	17	77	22.08 %	8	47	17.02 %
TOTAL:	3	3	100.00 %	42	430	9.77 %	239	933	25.62 %	210	595	35.29 %
TOWNS												
Brighton	0	0	0.00 %	16	106	15.09 %	65	194	33.51 %	68	141	48.23 %
Chili	0	0	0.00 %	22	99	22.22 %	46	193	23.83 %	68	161	42.24 %
Clarkson	0	0	0.00 %	4	15	26.67 %	8	32	25.00 %	15	42	35.71 %
East Rochester	0	0	0.00 %	8	33	24.24 %	16	47	34.04 %	20	43	46.51 %
Gates	0	0	0.00 %	11	93	11.83 %	30	156	19.23 %	67	155	43.23 %
Greece	0	0	0.00 %	65	357	18.21 %	147	593	24.79 %	173	511	33.86 %
Hamlin	0	0	0.00 %	5	56	8.93 %	20	58	34.48 %	9	45	20.00 %
Henrietta	0	0	0.00 %	18	128	14.06 %	50	210	23.81 %	70	189	37.04 %
Irondequoit	0	0	0.00 %	31	197	15.74 %	125	390	32.05 %	151	284	53.17 %
Mendon	0	0	0.00 %	8	53	15.09 %	18	49	36.73 %	28	53	52.83 %
Ogden	0	0	0.00 %	13	102	12.75 %	29	119	24.37 %	44	116	37.93 %
Parma	0	0	0.00 %	10	74	13.51 %	20	79	25.32 %	43	96	44.79 %
Penfield	0	0	0.00 %	21	139	15.11 %	60	208	28.85 %	102	191	53.40 %
Perinton	0	0	0.00 %	30	161	18.63 %	69	258	26.74 %	134	272	49.26 %
Pittsford	0	0	0.00 %	20	112	17.86 %	32	110	29.09 %	80	146	54.79 %
Riga	0	0	0.00 %	2	25	8.00 %	17	46	36.96 %	10	31	32.26 %
Rush	0	0	0.00 %	1	14	7.14 %	1	16	6.25 %	6	12	50.00 %
Sweden	0	0	0.00 %	11	50	22.00 %	13	62	20.97 %	24	60	40.00 %
Webster	0	0	0.00 %	39	193	20.21 %	56	232	24.14 %	112	298	37.58 %
Wheatland	0	0	0.00 %	2	20	10.00 %	13	40	32.50 %	9	30	30.00 %
TOTAL:	0	0	0.00 %	337	2,027	16.63 %	835	3,092	27.01 %	1,233	2,876	42.87 %
GRAND TOTAL:	3	3	100.00 %	379	2,457	15.43 %	1,074	4,025	26.68 %	1,443	3,471	41.57 %

2010 GENERAL ELECTION
INDEPENDENCE TURNOUT BY AGE

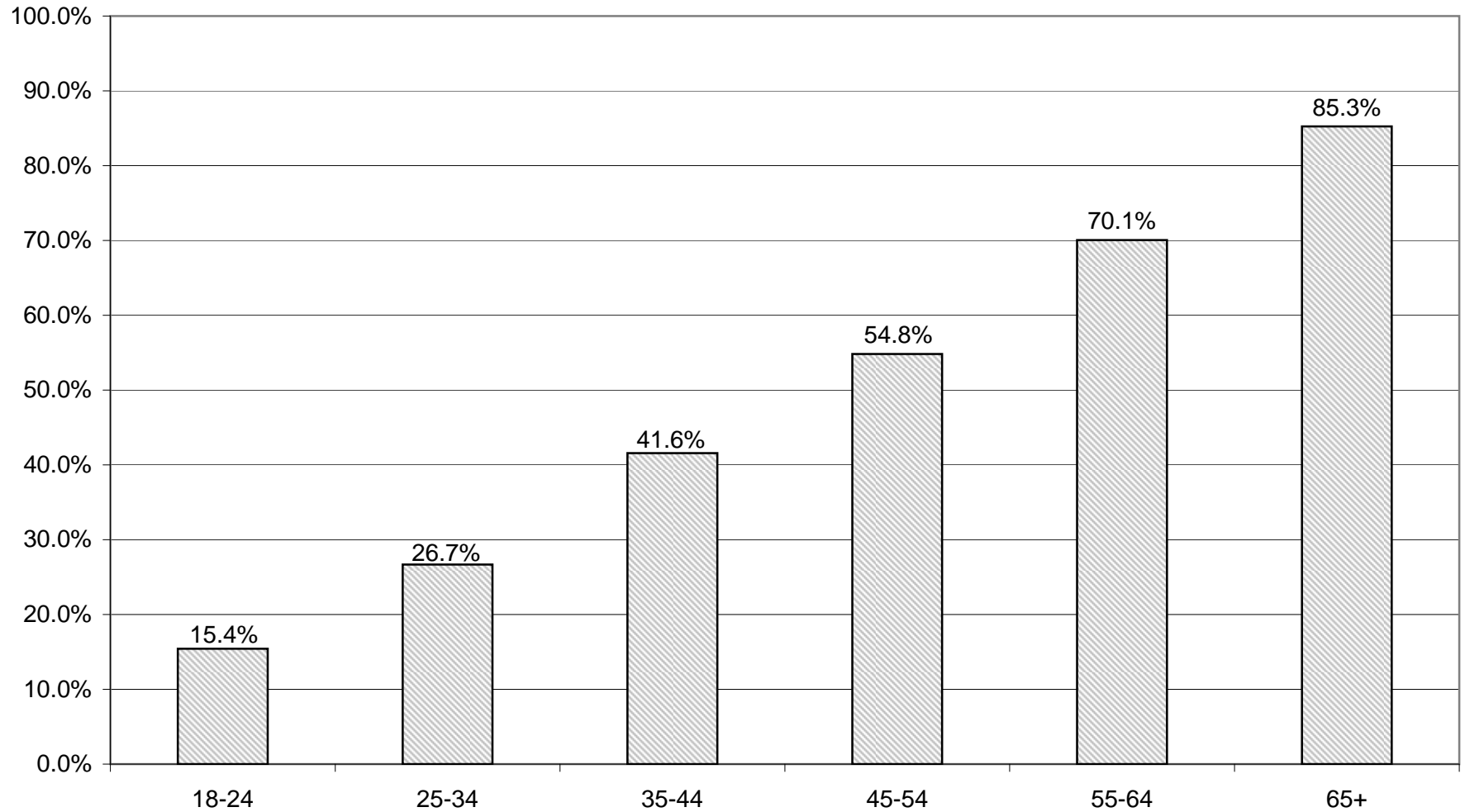
LT/LD SUMMARY
Part 2 of 2

LEGISLATIVE DISTRICT OR TOWN	45-54			55-64			65+		
	VOTED	REGISTERED	TURNOUT	VOTED	REGISTERED	TURNOUT	VOTED	REGISTERED	TURNOUT
CITY									
Leg. Dist. 06	18	27	66.67 %	13	14	92.86 %	8	12	66.67 %
Leg. Dist. 07	11	17	64.71 %	12	19	63.16 %	11	14	78.57 %
Leg. Dist. 21	39	89	43.82 %	33	54	61.11 %	29	40	72.50 %
Leg. Dist. 22	6	33	18.18 %	3	12	25.00 %	4	10	40.00 %
Leg. Dist. 23	56	87	64.37 %	31	47	65.96 %	21	25	84.00 %
Leg. Dist. 24	29	50	58.00 %	20	25	80.00 %	16	18	88.89 %
Leg. Dist. 25	16	40	40.00 %	10	30	33.33 %	18	24	75.00 %
Leg. Dist. 26	29	58	50.00 %	22	32	68.75 %	12	12	100.00 %
Leg. Dist. 27	24	69	34.78 %	28	52	53.85 %	10	17	58.82 %
Leg. Dist. 28	18	57	31.58 %	22	41	53.66 %	11	18	61.11 %
Leg. Dist. 29	20	46	43.48 %	17	37	45.95 %	13	17	76.47 %
TOTAL:	266	573	46.42 %	211	363	58.13 %	154	207	74.40 %
TOWNS									
Brighton	98	159	61.64 %	68	93	73.12 %	95	111	85.59 %
Chili	61	108	56.48 %	53	88	60.23 %	62	72	86.11 %
Clarkson	28	55	50.91 %	15	21	71.43 %	14	17	82.35 %
East Rochester	26	44	59.09 %	19	28	67.86 %	13	14	92.86 %
Gates	64	135	47.41 %	66	90	73.33 %	82	100	82.00 %
Greece	259	525	49.33 %	222	318	69.81 %	256	304	84.21 %
Hamlin	36	61	59.02 %	17	35	48.57 %	15	15	100.00 %
Henrietta	86	169	50.89 %	70	97	72.16 %	69	86	80.23 %
Irondequoit	188	302	62.25 %	115	161	71.43 %	127	146	86.99 %
Mendon	43	66	65.15 %	35	37	94.59 %	23	26	88.46 %
Ogden	64	113	56.64 %	42	69	60.87 %	41	48	85.42 %
Parma	47	93	50.54 %	44	63	69.84 %	45	49	91.84 %
Penfield	150	266	56.39 %	101	126	80.16 %	111	147	75.51 %
Perinton	172	277	62.09 %	133	172	77.33 %	153	162	94.44 %
Pittsford	109	158	68.99 %	71	89	79.78 %	90	97	92.78 %
Riga	31	54	57.41 %	13	18	72.22 %	13	13	100.00 %
Rush	13	29	44.83 %	7	9	77.78 %	11	12	91.67 %
Sweden	39	76	51.32 %	28	34	82.35 %	23	29	79.31 %
Webster	161	282	57.09 %	108	140	77.14 %	148	165	89.70 %
Wheatland	16	24	66.67 %	15	23	65.22 %	10	10	100.00 %
TOTAL:	1,691	2,996	56.44 %	1,242	1,711	72.59 %	1,406	1,623	86.63 %
GRAND TOTAL:	1,957	3,569	54.83 %	1,453	2,074	70.06 %	1,560	1,830	85.25 %

INDEPENDENCE TURNOUT - TOTAL AND GENDER 2010 GENERAL ELECTION



INDEPENDENCE TURNOUT BY AGE GROUP 2010 GENERAL ELECTION



CONSERVATIVE SUMMARY

2010 GENERAL ELECTION
CONSERVATIVE TURNOUT BY GENDER

LT/LD SUMMARY

LEGISLATIVE DISTRICT OR TOWN	TOTAL VOTERS			MALES			FEMALES		
	VOTED	REGISTERED	TURNOUT	VOTED	REGISTERED	TURNOUT	VOTED	REGISTERED	TURNOUT
CITY									
Leg. Dist. 06	57	84	67.86 %	27	46	58.70 %	30	38	78.95 %
Leg. Dist. 07	17	30	56.67 %	11	20	55.00 %	6	10	60.00 %
Leg. Dist. 21	66	105	62.86 %	43	60	71.67 %	23	45	51.11 %
Leg. Dist. 22	15	44	34.09 %	12	22	54.55 %	3	22	13.64 %
Leg. Dist. 23	66	99	66.67 %	45	59	76.27 %	21	40	52.50 %
Leg. Dist. 24	36	53	67.92 %	21	31	67.74 %	15	22	68.18 %
Leg. Dist. 25	26	51	50.98 %	15	30	50.00 %	11	21	52.38 %
Leg. Dist. 26	57	93	61.29 %	35	54	64.81 %	22	39	56.41 %
Leg. Dist. 27	32	66	48.48 %	22	41	53.66 %	10	25	40.00 %
Leg. Dist. 28	68	117	58.12 %	39	65	60.00 %	29	52	55.77 %
Leg. Dist. 29	43	95	45.26 %	22	56	39.29 %	21	39	53.85 %
TOTAL:	483	837	57.71 %	292	484	60.33 %	191	353	54.11 %
TOWNS									
Brighton	143	196	72.96 %	87	116	75.00 %	56	80	70.00 %
Chili	286	433	66.05 %	169	247	68.42 %	117	186	62.90 %
Clarkson	72	123	58.54 %	45	78	57.69 %	27	45	60.00 %
East Rochester	46	89	51.69 %	24	47	51.06 %	22	42	52.38 %
Gates	243	394	61.68 %	151	220	68.64 %	92	174	52.87 %
Greece	946	1,533	61.71 %	522	812	64.29 %	424	721	58.81 %
Hamlin	83	127	65.35 %	53	72	73.61 %	30	55	54.55 %
Henrietta	283	455	62.20 %	156	252	61.90 %	127	203	62.56 %
Irondequoit	450	681	66.08 %	271	387	70.03 %	179	294	60.88 %
Mendon	73	110	66.36 %	48	72	66.67 %	25	38	65.79 %
Ogden	231	366	63.11 %	127	184	69.02 %	104	182	57.14 %
Parma	173	261	66.28 %	101	146	69.18 %	72	115	62.61 %
Penfield	276	390	70.77 %	168	219	76.71 %	108	171	63.16 %
Perinton	312	440	70.91 %	200	271	73.80 %	112	169	66.27 %
Pittsford	160	209	76.56 %	104	130	80.00 %	56	79	70.89 %
Riga	64	93	68.82 %	33	52	63.46 %	31	41	75.61 %
Rush	41	51	80.39 %	27	30	90.00 %	14	21	66.67 %
Sweden	89	135	65.93 %	55	74	74.32 %	34	61	55.74 %
Webster	391	541	72.27 %	241	317	76.03 %	150	224	66.96 %
Wheatland	57	76	75.00 %	37	50	74.00 %	20	26	76.92 %
TOTAL:	4,419	6,703	65.93 %	2,619	3,776	69.36 %	1,800	2,927	61.50 %
GRAND TOTAL:	4,902	7,540	65.01 %	2,911	4,260	68.33 %	1,991	3,280	60.70 %

2010 GENERAL ELECTION
CONSERVATIVE TURNOUT BY AGE

LT/LD SUMMARY

Part 1 of 2

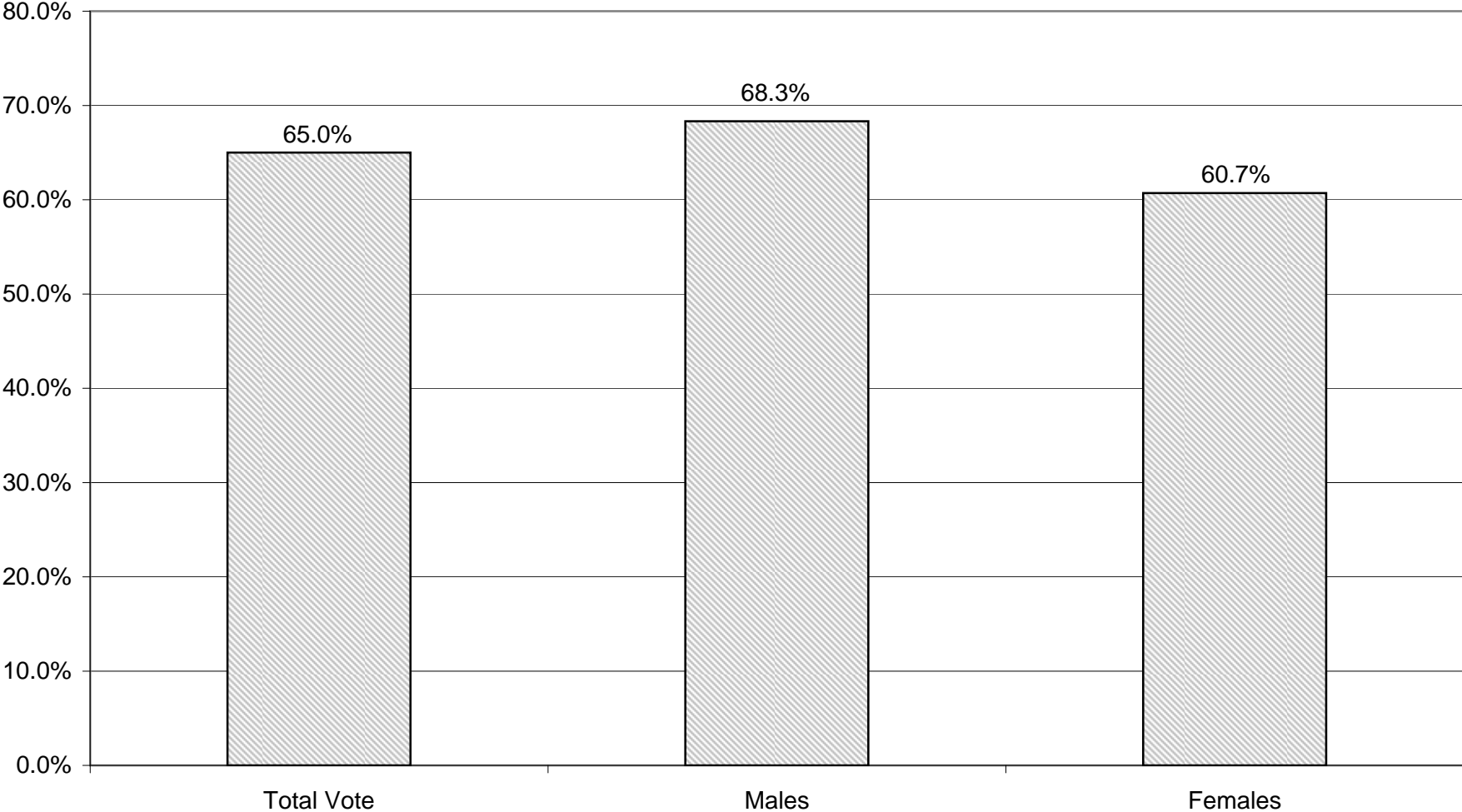
LEGISLATIVE DISTRICT OR TOWN CITY	NDOB			18-24			25-34			35-44		
	VOTED	REGISTERED	TURNOUT	VOTED	REGISTERED	TURNOUT	VOTED	REGISTERED	TURNOUT	VOTED	REGISTERED	TURNOUT
Leg. Dist. 06	0	0	0.00 %	0	7	0.00 %	5	7	71.43 %	6	14	42.86 %
Leg. Dist. 07	0	0	0.00 %	1	1	100.00 %	1	1	100.00 %	0	5	0.00 %
Leg. Dist. 21	3	3	100.00 %	1	4	25.00 %	9	19	47.37 %	7	11	63.64 %
Leg. Dist. 22	0	0	0.00 %	0	2	0.00 %	1	5	20.00 %	1	8	12.50 %
Leg. Dist. 23	0	0	0.00 %	0	3	0.00 %	14	21	66.67 %	9	18	50.00 %
Leg. Dist. 24	2	2	100.00 %	0	4	0.00 %	3	9	33.33 %	6	7	85.71 %
Leg. Dist. 25	0	1	0.00 %	1	4	25.00 %	2	10	20.00 %	2	4	50.00 %
Leg. Dist. 26	0	0	0.00 %	2	5	40.00 %	4	7	57.14 %	4	13	30.77 %
Leg. Dist. 27	0	0	0.00 %	0	5	0.00 %	2	7	28.57 %	2	7	28.57 %
Leg. Dist. 28	0	0	0.00 %	2	3	66.67 %	2	7	28.57 %	8	17	47.06 %
Leg. Dist. 29	0	0	0.00 %	3	3	100.00 %	1	12	8.33 %	4	18	22.22 %
TOTAL:	5	6	83.33 %	10	41	24.39 %	44	105	41.90 %	49	122	40.16 %
TOWNS												
Brighton	1	1	100.00 %	4	8	50.00 %	8	17	47.06 %	20	34	58.82 %
Chili	2	2	100.00 %	5	22	22.73 %	19	43	44.19 %	33	70	47.14 %
Clarkson	0	0	0.00 %	4	8	50.00 %	6	9	66.67 %	17	34	50.00 %
East Rochester	0	1	0.00 %	0	1	0.00 %	6	17	35.29 %	3	12	25.00 %
Gates	0	0	0.00 %	3	11	27.27 %	18	46	39.13 %	31	56	55.36 %
Greece	8	10	80.00 %	16	64	25.00 %	57	155	36.77 %	84	201	41.79 %
Hamlin	0	0	0.00 %	4	6	66.67 %	4	14	28.57 %	5	20	25.00 %
Henrietta	0	1	0.00 %	5	22	22.73 %	19	46	41.30 %	45	75	60.00 %
Irondequoit	6	7	85.71 %	11	31	35.48 %	29	72	40.28 %	52	93	55.91 %
Mendon	0	0	0.00 %	4	12	33.33 %	1	7	14.29 %	16	22	72.73 %
Ogden	0	1	0.00 %	6	27	22.22 %	20	33	60.61 %	25	58	43.10 %
Parma	0	0	0.00 %	2	11	18.18 %	8	21	38.10 %	27	51	52.94 %
Penfield	0	2	0.00 %	5	19	26.32 %	11	29	37.93 %	21	47	44.68 %
Perinton	0	0	0.00 %	4	23	17.39 %	7	30	23.33 %	30	50	60.00 %
Pittsford	1	2	50.00 %	4	12	33.33 %	5	14	35.71 %	19	31	61.29 %
Riga	0	0	0.00 %	2	9	22.22 %	3	8	37.50 %	13	16	81.25 %
Rush	0	0	0.00 %	1	2	50.00 %	1	3	33.33 %	2	6	33.33 %
Sweden	0	0	0.00 %	3	10	30.00 %	11	22	50.00 %	10	16	62.50 %
Webster	3	3	100.00 %	13	36	36.11 %	10	38	26.32 %	48	81	59.26 %
Wheatland	0	0	0.00 %	1	2	50.00 %	0	4	0.00 %	8	10	80.00 %
TOTAL:	21	30	70.00 %	97	336	28.87 %	243	628	38.69 %	509	983	51.78 %
GRAND TOTAL:	26	36	72.22 %	107	377	28.38 %	287	733	39.15 %	558	1,105	50.50 %

2010 GENERAL ELECTION
CONSERVATIVE TURNOUT BY AGE

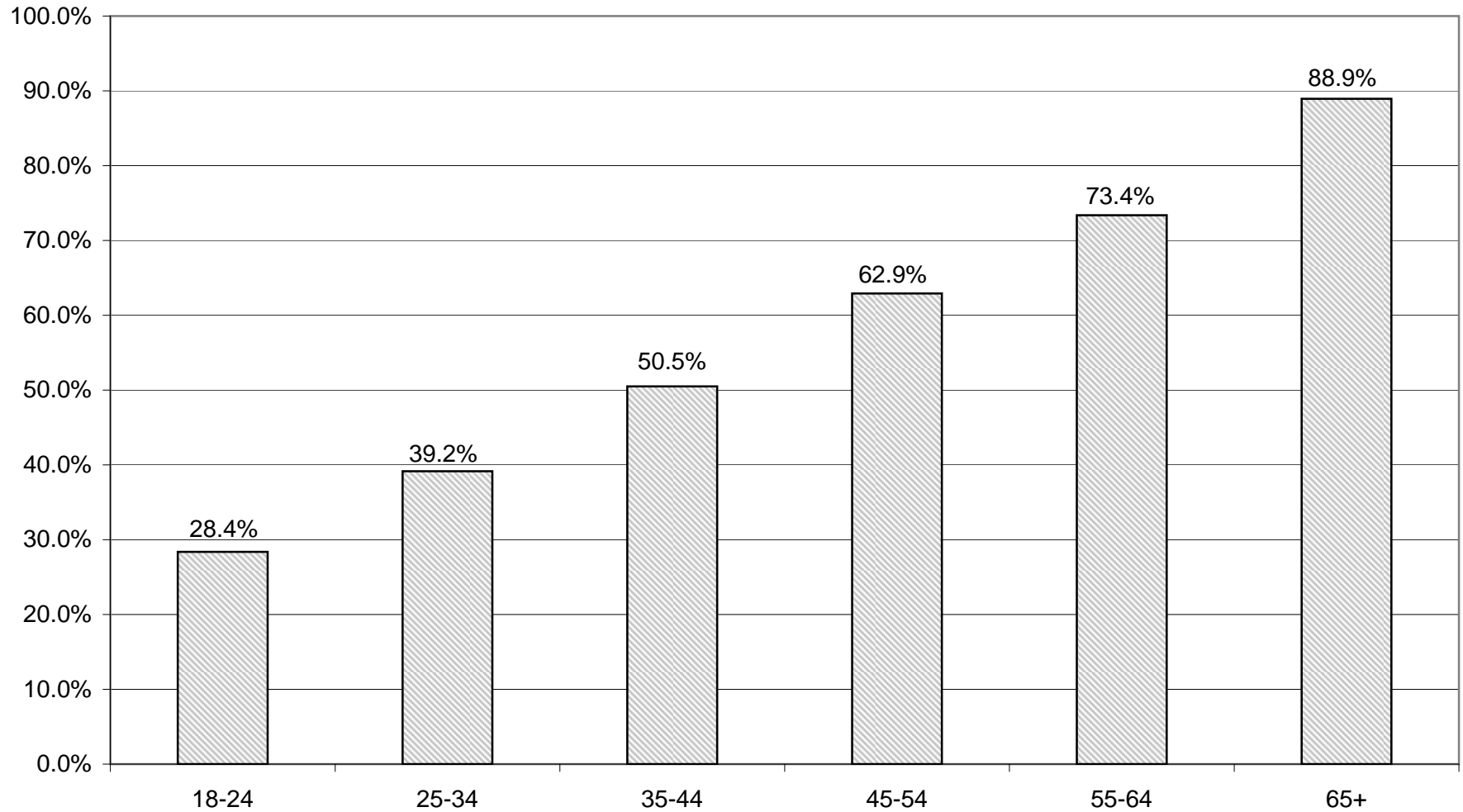
LT/LD SUMMARY
Part 2 of 2

LEGISLATIVE DISTRICT OR TOWN CITY	45-54			55-64			65+		
	VOTED	REGISTERED	TURNOUT	VOTED	REGISTERED	TURNOUT	VOTED	REGISTERED	TURNOUT
Leg. Dist. 06	13	18	72.22 %	18	20	90.00 %	15	18	83.33 %
Leg. Dist. 07	1	5	20.00 %	6	14	42.86 %	4	4	100.00 %
Leg. Dist. 21	14	24	58.33 %	20	29	68.97 %	12	15	80.00 %
Leg. Dist. 22	5	13	38.46 %	3	8	37.50 %	5	8	62.50 %
Leg. Dist. 23	14	21	66.67 %	14	18	77.78 %	15	18	83.33 %
Leg. Dist. 24	12	15	80.00 %	7	9	77.78 %	6	7	85.71 %
Leg. Dist. 25	5	11	45.45 %	10	12	83.33 %	6	9	66.67 %
Leg. Dist. 26	14	24	58.33 %	18	28	64.29 %	15	16	93.75 %
Leg. Dist. 27	8	15	53.33 %	12	22	54.55 %	8	10	80.00 %
Leg. Dist. 28	16	29	55.17 %	18	35	51.43 %	22	26	84.62 %
Leg. Dist. 29	10	21	47.62 %	14	26	53.85 %	11	15	73.33 %
TOTAL:	112	196	57.14 %	140	221	63.35 %	123	146	84.25 %
TOWNS									
Brighton	33	45	73.33 %	31	40	77.50 %	46	51	90.20 %
Chili	64	101	63.37 %	74	97	76.29 %	89	98	90.82 %
Clarkson	18	41	43.90 %	15	18	83.33 %	12	13	92.31 %
East Rochester	15	26	57.69 %	19	26	73.08 %	3	6	50.00 %
Gates	62	106	58.49 %	61	89	68.54 %	68	86	79.07 %
Greece	232	413	56.17 %	287	384	74.74 %	262	306	85.62 %
Hamlin	35	41	85.37 %	21	31	67.74 %	14	15	93.33 %
Henrietta	56	105	53.33 %	66	97	68.04 %	92	109	84.40 %
Irondequoit	95	147	64.63 %	138	185	74.59 %	119	146	81.51 %
Mendon	22	27	81.48 %	16	24	66.67 %	14	18	77.78 %
Ogden	74	108	68.52 %	43	80	53.75 %	59	59	100.00 %
Parma	48	72	66.67 %	47	61	77.05 %	41	45	91.11 %
Penfield	70	85	82.35 %	85	123	69.11 %	84	85	98.82 %
Perinton	65	94	69.15 %	76	104	73.08 %	130	139	93.53 %
Pittsford	37	43	86.05 %	32	44	72.73 %	62	63	98.41 %
Riga	19	29	65.52 %	15	17	88.24 %	12	14	85.71 %
Rush	11	15	73.33 %	14	14	100.00 %	11	11	100.00 %
Sweden	26	40	65.00 %	21	30	70.00 %	17	17	100.00 %
Webster	91	143	63.64 %	119	123	96.75 %	107	117	91.45 %
Wheatland	9	21	42.86 %	26	28	92.86 %	11	11	100.00 %
TOTAL:	1,082	1,702	63.57 %	1,207	1,615	74.74 %	1,260	1,409	89.43 %
GRAND TOTAL:	1,194	1,898	62.91 %	1,347	1,836	73.37 %	1,383	1,555	88.94 %

CONSERVATIVE TURNOUT - TOTAL AND GENDER 2010 GENERAL ELECTION



CONSERVATIVE TURNOUT BY AGE GROUP 2010 GENERAL ELECTION



WORKING FAMILIES SUMMARY

2010 GENERAL ELECTION
WORKING FAMILIES TURNOUT BY GENDER

LT/LD SUMMARY

LEGISLATIVE DISTRICT OR TOWN CITY	TOTAL VOTERS			MALES			FEMALES		
	VOTED	REGISTERED	TURNOUT	VOTED	REGISTERED	TURNOUT	VOTED	REGISTERED	TURNOUT
Leg. Dist. 06	3	9	33.33 %	1	4	25.00 %	2	5	40.00 %
Leg. Dist. 07	1	3	33.33 %	0	1	0.00 %	1	2	50.00 %
Leg. Dist. 21	14	60	23.33 %	6	21	28.57 %	8	39	20.51 %
Leg. Dist. 22	5	74	6.76 %	3	31	9.68 %	2	43	4.65 %
Leg. Dist. 23	13	29	44.83 %	8	16	50.00 %	5	13	38.46 %
Leg. Dist. 24	13	29	44.83 %	7	16	43.75 %	6	13	46.15 %
Leg. Dist. 25	8	41	19.51 %	3	17	17.65 %	5	24	20.83 %
Leg. Dist. 26	7	50	14.00 %	3	21	14.29 %	4	29	13.79 %
Leg. Dist. 27	15	66	22.73 %	9	24	37.50 %	6	42	14.29 %
Leg. Dist. 28	11	71	15.49 %	5	28	17.86 %	6	43	13.95 %
Leg. Dist. 29	8	81	9.88 %	5	29	17.24 %	3	52	5.77 %
TOTAL:	98	513	19.10 %	50	208	24.04 %	48	305	15.74 %
TOWNS									
Brighton	8	23	34.78 %	1	8	12.50 %	7	15	46.67 %
Chili	11	38	28.95 %	6	20	30.00 %	5	18	27.78 %
Clarkson	0	11	0.00 %	0	4	0.00 %	0	7	0.00 %
East Rochester	2	18	11.11 %	2	12	16.67 %	0	6	0.00 %
Gates	19	64	29.69 %	10	27	37.04 %	9	37	24.32 %
Greece	54	176	30.68 %	28	72	38.89 %	26	104	25.00 %
Hamlin	3	12	25.00 %	1	2	50.00 %	2	10	20.00 %
Henrietta	10	39	25.64 %	5	19	26.32 %	5	20	25.00 %
Irondequoit	25	70	35.71 %	14	33	42.42 %	11	37	29.73 %
Mendon	1	5	20.00 %	0	2	0.00 %	1	3	33.33 %
Ogden	9	31	29.03 %	2	15	13.33 %	7	16	43.75 %
Parma	17	50	34.00 %	10	32	31.25 %	7	18	38.89 %
Penfield	11	30	36.67 %	6	13	46.15 %	5	17	29.41 %
Perinton	16	49	32.65 %	8	24	33.33 %	8	25	32.00 %
Pittsford	7	15	46.67 %	3	6	50.00 %	4	9	44.44 %
Riga	3	9	33.33 %	1	4	25.00 %	2	5	40.00 %
Rush	4	8	50.00 %	3	7	42.86 %	1	1	100.00 %
Sweden	1	21	4.76 %	0	10	0.00 %	1	11	9.09 %
Webster	15	47	31.91 %	10	24	41.67 %	5	23	21.74 %
Wheatland	0	4	0.00 %	0	3	0.00 %	0	1	0.00 %
TOTAL:	216	720	30.00 %	110	337	32.64 %	106	383	27.68 %
GRAND TOTAL:	314	1,233	25.47 %	160	545	29.36 %	154	688	22.38 %

2010 GENERAL ELECTION
WORKING FAMILIES TURNOUT BY AGE

LT/LD SUMMARY
Part 1 of 2

LEGISLATIVE DISTRICT OR TOWN CITY	NDOB			18-24			25-34			35-44		
	VOTED	REGISTERED	TURNOUT	VOTED	REGISTERED	TURNOUT	VOTED	REGISTERED	TURNOUT	VOTED	REGISTERED	TURNOUT
Leg. Dist. 06	0	0	0.00 %	0	0	0.00 %	0	1	0.00 %	2	3	66.67 %
Leg. Dist. 07	0	0	0.00 %	0	0	0.00 %	0	1	0.00 %	0	1	0.00 %
Leg. Dist. 21	0	0	0.00 %	0	7	0.00 %	6	23	26.09 %	3	12	25.00 %
Leg. Dist. 22	0	0	0.00 %	0	13	0.00 %	1	26	3.85 %	1	20	5.00 %
Leg. Dist. 23	0	0	0.00 %	0	2	0.00 %	4	7	57.14 %	3	10	30.00 %
Leg. Dist. 24	0	0	0.00 %	0	2	0.00 %	5	10	50.00 %	2	6	33.33 %
Leg. Dist. 25	0	0	0.00 %	0	10	0.00 %	3	11	27.27 %	2	8	25.00 %
Leg. Dist. 26	0	0	0.00 %	0	7	0.00 %	0	16	0.00 %	4	16	25.00 %
Leg. Dist. 27	0	0	0.00 %	0	13	0.00 %	2	15	13.33 %	5	17	29.41 %
Leg. Dist. 28	0	0	0.00 %	0	8	0.00 %	1	18	5.56 %	4	28	14.29 %
Leg. Dist. 29	0	0	0.00 %	0	9	0.00 %	3	35	8.57 %	2	23	8.70 %
TOTAL:	0	0	0.00 %	0	71	0.00 %	25	163	15.34 %	28	144	19.44 %
TOWNS												
Brighton	0	0	0.00 %	0	2	0.00 %	1	5	20.00 %	2	8	25.00 %
Chili	0	0	0.00 %	0	4	0.00 %	0	10	0.00 %	1	6	16.67 %
Clarkson	0	0	0.00 %	0	0	0.00 %	0	4	0.00 %	0	3	0.00 %
East Rochester	0	0	0.00 %	0	1	0.00 %	1	4	25.00 %	0	6	0.00 %
Gates	0	0	0.00 %	3	4	75.00 %	3	16	18.75 %	3	24	12.50 %
Greece	0	0	0.00 %	3	12	25.00 %	8	33	24.24 %	15	64	23.44 %
Hamlin	0	0	0.00 %	0	0	0.00 %	0	2	0.00 %	0	5	0.00 %
Henrietta	0	0	0.00 %	1	3	33.33 %	1	10	10.00 %	2	8	25.00 %
Irondequoit	0	0	0.00 %	2	6	33.33 %	5	17	29.41 %	9	22	40.91 %
Mendon	0	0	0.00 %	0	0	0.00 %	0	2	0.00 %	0	1	0.00 %
Ogden	0	0	0.00 %	0	1	0.00 %	2	6	33.33 %	2	7	28.57 %
Parma	0	0	0.00 %	0	5	0.00 %	2	7	28.57 %	4	19	21.05 %
Penfield	0	0	0.00 %	1	3	33.33 %	1	3	33.33 %	3	6	50.00 %
Perinton	0	0	0.00 %	1	3	33.33 %	4	20	20.00 %	4	11	36.36 %
Pittsford	0	0	0.00 %	0	1	0.00 %	1	3	33.33 %	1	1	100.00 %
Riga	0	0	0.00 %	0	0	0.00 %	0	2	0.00 %	1	4	25.00 %
Rush	0	0	0.00 %	1	2	50.00 %	1	0	0.00 %	1	2	50.00 %
Sweden	0	0	0.00 %	0	1	0.00 %	0	7	0.00 %	1	9	11.11 %
Webster	0	0	0.00 %	0	2	0.00 %	2	13	15.38 %	6	11	54.55 %
Wheatland	0	0	0.00 %	0	0	0.00 %	0	1	0.00 %	0	1	0.00 %
TOTAL:	0	0	0.00 %	12	50	24.00 %	32	165	19.39 %	55	218	25.23 %
GRAND TOTAL:	0	0	0.00 %	12	121	9.92 %	57	328	17.38 %	83	362	22.93 %

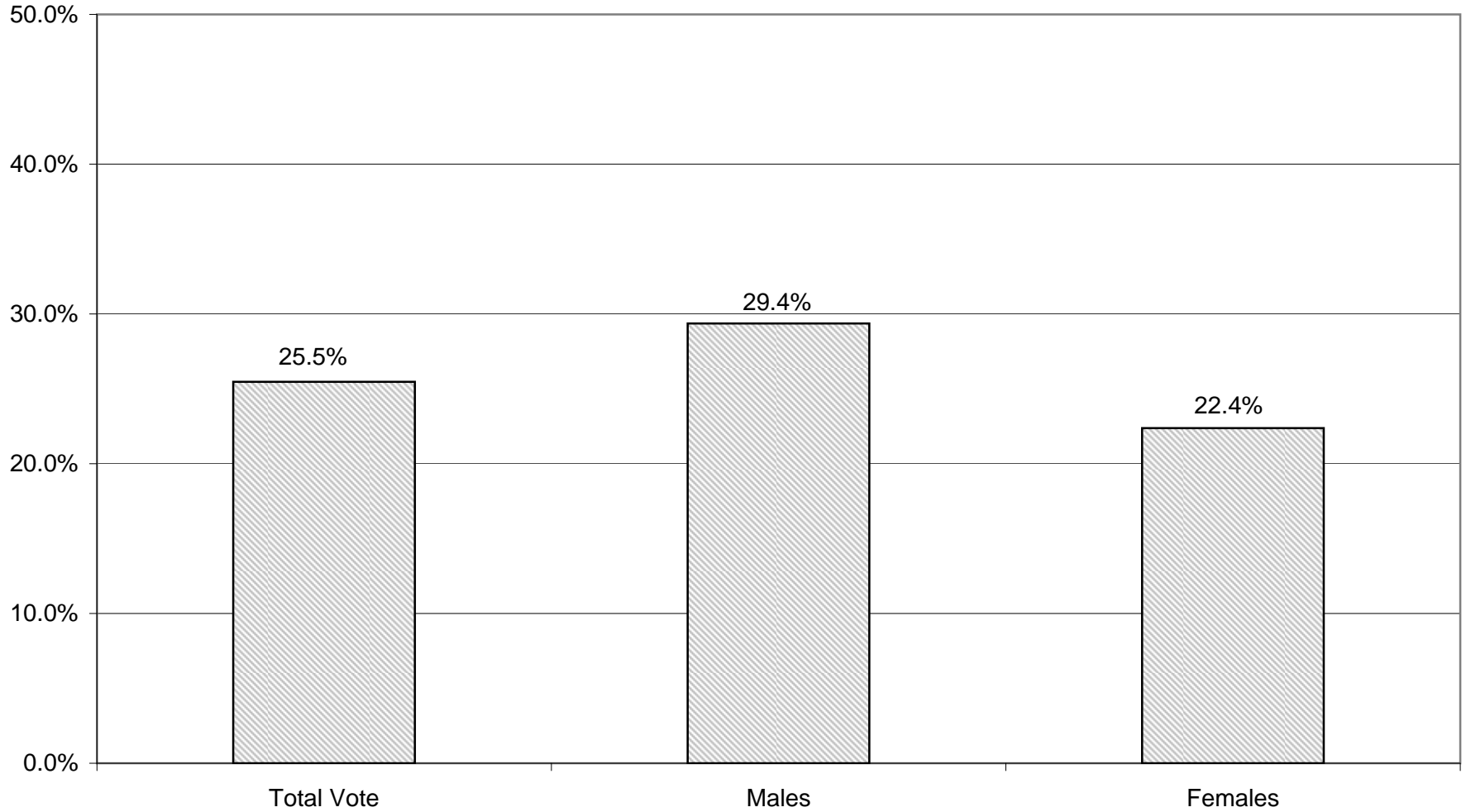
2010 GENERAL ELECTION
WORKING FAMILIES TURNOUT BY AGE

LT/LD SUMMARY

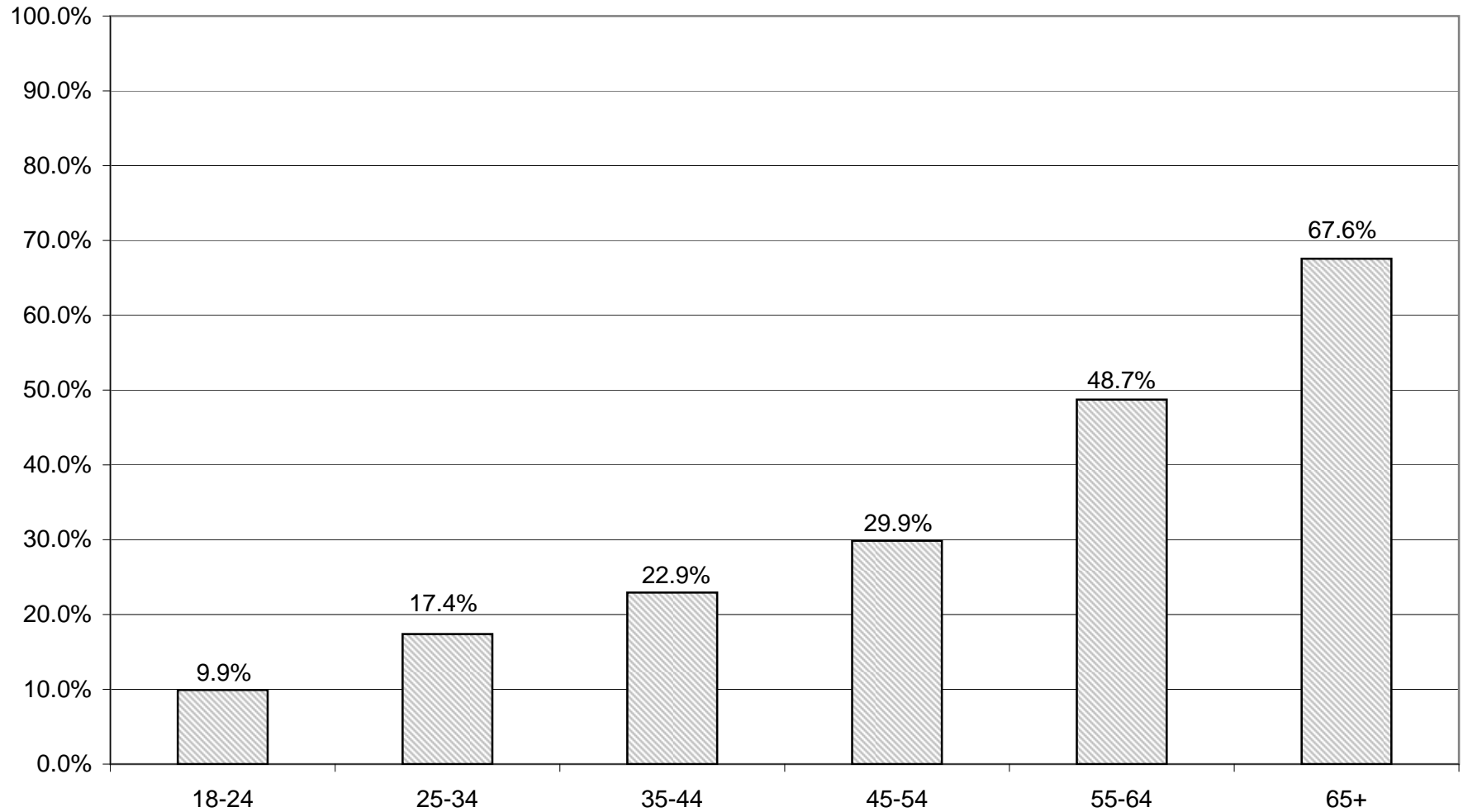
Part 2 of 2

LEGISLATIVE DISTRICT OR TOWN	45-54			55-64			65+		
	VOTED	REGISTERED	TURNOUT	VOTED	REGISTERED	TURNOUT	VOTED	REGISTERED	TURNOUT
CITY									
Leg. Dist. 06	1	5	20.00 %	0	0	0.00 %	0	0	0.00 %
Leg. Dist. 07	0	0	0.00 %	1	1	100.00 %	0	0	0.00 %
Leg. Dist. 21	3	14	21.43 %	2	4	50.00 %	0	0	0.00 %
Leg. Dist. 22	0	6	0.00 %	2	8	25.00 %	1	1	100.00 %
Leg. Dist. 23	2	2	100.00 %	1	5	20.00 %	2	3	66.67 %
Leg. Dist. 24	1	5	20.00 %	3	4	75.00 %	2	2	100.00 %
Leg. Dist. 25	2	8	25.00 %	1	4	25.00 %	0	0	0.00 %
Leg. Dist. 26	0	7	0.00 %	1	2	50.00 %	2	2	100.00 %
Leg. Dist. 27	4	13	30.77 %	2	5	40.00 %	2	3	66.67 %
Leg. Dist. 28	5	13	38.46 %	1	3	33.33 %	0	1	0.00 %
Leg. Dist. 29	1	10	10.00 %	1	4	25.00 %	1	0	0.00 %
TOTAL:	20	83	24.10 %	15	40	37.50 %	10	12	83.33 %
TOWNS									
Brighton	4	8	50.00 %	0	0	0.00 %	1	0	0.00 %
Chili	5	9	55.56 %	5	9	55.56 %	0	0	0.00 %
Clarkson	0	2	0.00 %	0	2	0.00 %	0	0	0.00 %
East Rochester	0	5	0.00 %	1	2	50.00 %	0	0	0.00 %
Gates	4	12	33.33 %	3	4	75.00 %	3	4	75.00 %
Greece	16	44	36.36 %	7	18	38.89 %	5	5	100.00 %
Hamlin	1	3	33.33 %	2	2	100.00 %	0	0	0.00 %
Henrietta	2	11	18.18 %	3	6	50.00 %	1	1	100.00 %
Irondequoit	7	17	41.18 %	2	6	33.33 %	1	2	50.00 %
Mendon	0	0	0.00 %	1	2	50.00 %	1	0	0.00 %
Ogden	4	13	30.77 %	1	3	33.33 %	0	1	0.00 %
Parma	6	12	50.00 %	3	4	75.00 %	2	3	66.67 %
Penfield	1	8	12.50 %	3	5	60.00 %	2	5	40.00 %
Perinton	3	9	33.33 %	4	6	66.67 %	0	0	0.00 %
Pittsford	3	7	42.86 %	2	2	100.00 %	0	1	0.00 %
Riga	1	2	50.00 %	1	1	100.00 %	0	0	0.00 %
Rush	1	3	33.33 %	0	1	0.00 %	0	0	0.00 %
Sweden	0	4	0.00 %	0	0	0.00 %	0	0	0.00 %
Webster	2	14	14.29 %	4	4	100.00 %	1	3	33.33 %
Wheatland	0	2	0.00 %	0	0	0.00 %	0	0	0.00 %
TOTAL:	60	185	32.43 %	42	77	54.55 %	15	25	60.00 %
GRAND TOTAL:	80	268	29.85 %	57	117	48.72 %	25	37	67.57 %

WORKING FAMILIES TURNOUT - TOTAL AND GENDER 2010 GENERAL ELECTION



WORKING FAMILIES TURNOUT BY AGE GROUP 2010 GENERAL ELECTION



BLANKS SUMMARY

2010 GENERAL ELECTION
BLANK TURNOUT BY GENDER

LT/LD SUMMARY

LEGISLATIVE DISTRICT OR TOWN CITY	TOTAL VOTERS			MALES			FEMALES		
	VOTED	REGISTERED	TURNOUT	VOTED	REGISTERED	TURNOUT	VOTED	REGISTERED	TURNOUT
Leg. Dist. 06	327	727	44.98 %	167	334	50.00 %	160	393	40.71 %
Leg. Dist. 07	174	369	47.15 %	88	182	48.35 %	86	187	45.99 %
Leg. Dist. 21	871	2,412	36.11 %	474	1,194	39.70 %	397	1,218	32.59 %
Leg. Dist. 22	149	1,269	11.74 %	80	546	14.65 %	69	723	9.54 %
Leg. Dist. 23	1,255	2,708	46.34 %	696	1,451	47.97 %	559	1,257	44.47 %
Leg. Dist. 24	723	1,571	46.02 %	407	831	48.98 %	316	740	42.70 %
Leg. Dist. 25	411	1,456	28.23 %	242	749	32.31 %	169	707	23.90 %
Leg. Dist. 26	413	1,360	30.37 %	213	629	33.86 %	200	731	27.36 %
Leg. Dist. 27	452	1,801	25.10 %	228	848	26.89 %	224	953	23.50 %
Leg. Dist. 28	371	1,699	21.84 %	191	760	25.13 %	180	939	19.17 %
Leg. Dist. 29	397	1,863	21.31 %	215	835	25.75 %	182	1,028	17.70 %
TOTAL:	5,543	17,235	32.16 %	3,001	8,359	35.90 %	2,542	8,876	28.64 %
TOWNS									
Brighton	2,704	5,002	54.06 %	1,408	2,504	56.23 %	1,296	2,498	51.88 %
Chili	2,064	4,497	45.90 %	1,071	2,213	48.40 %	993	2,284	43.48 %
Clarkson	377	840	44.88 %	198	411	48.18 %	179	429	41.72 %
East Rochester	426	966	44.10 %	205	448	45.76 %	221	518	42.66 %
Gates	1,608	4,076	39.45 %	830	1,972	42.09 %	778	2,104	36.98 %
Greece	6,410	14,838	43.20 %	3,265	7,038	46.39 %	3,145	7,800	40.32 %
Hamlin	486	1,233	39.42 %	271	587	46.17 %	215	646	33.28 %
Henrietta	2,183	5,006	43.61 %	1,167	2,599	44.90 %	1,016	2,407	42.21 %
Irondequoit	4,081	8,445	48.32 %	2,070	4,048	51.14 %	2,011	4,397	45.74 %
Mendon	822	1,463	56.19 %	421	731	57.59 %	401	732	54.78 %
Ogden	1,438	3,103	46.34 %	771	1,521	50.69 %	667	1,582	42.16 %
Parma	1,174	2,709	43.34 %	613	1,312	46.72 %	561	1,397	40.16 %
Penfield	3,341	6,318	52.88 %	1,744	3,083	56.57 %	1,597	3,235	49.37 %
Perinton	4,520	8,150	55.46 %	2,351	4,057	57.95 %	2,169	4,093	52.99 %
Pittsford	2,593	4,656	55.69 %	1,323	2,269	58.31 %	1,270	2,387	53.20 %
Riga	439	910	48.24 %	240	473	50.74 %	199	437	45.54 %
Rush	367	648	56.64 %	186	338	55.03 %	181	310	58.39 %
Sweden	679	1,510	44.97 %	352	724	48.62 %	327	786	41.60 %
Webster	3,744	7,311	51.21 %	1,921	3,526	54.48 %	1,823	3,785	48.16 %
Wheatland	326	740	44.05 %	161	353	45.61 %	165	387	42.64 %
TOTAL:	39,782	82,421	48.27 %	20,568	40,207	51.16 %	19,214	42,214	45.52 %
GRAND TOTAL:	45,325	99,656	45.48 %	23,569	48,566	48.53 %	21,756	51,090	42.58 %

2010 GENERAL ELECTION
BLANK TURNOUT BY AGE

LT/LD SUMMARY
Part 1 of 2

LEGISLATIVE DISTRICT OR TOWN CITY	NDOB			18-24			25-34			35-44		
	VOTED	REGISTERED	TURNOUT	VOTED	REGISTERED	TURNOUT	VOTED	REGISTERED	TURNOUT	VOTED	REGISTERED	TURNOUT
Leg. Dist. 06	0	1	0.00 %	6	45	13.33 %	30	172	17.44 %	41	121	33.88 %
Leg. Dist. 07	0	0	0.00 %	5	33	15.15 %	14	65	21.54 %	23	58	39.66 %
Leg. Dist. 21	4	5	80.00 %	21	259	8.11 %	166	632	26.27 %	159	516	30.81 %
Leg. Dist. 22	2	4	50.00 %	9	220	4.09 %	20	309	6.47 %	26	272	9.56 %
Leg. Dist. 23	12	12	100.00 %	30	212	14.15 %	243	820	29.63 %	219	504	43.45 %
Leg. Dist. 24	3	4	75.00 %	10	114	8.77 %	176	489	35.99 %	115	240	47.92 %
Leg. Dist. 25	1	3	33.33 %	21	260	8.08 %	78	361	21.61 %	78	277	28.16 %
Leg. Dist. 26	2	4	50.00 %	10	146	6.85 %	38	333	11.41 %	69	279	24.73 %
Leg. Dist. 27	6	10	60.00 %	27	279	9.68 %	61	435	14.02 %	79	332	23.80 %
Leg. Dist. 28	2	6	33.33 %	14	240	5.83 %	41	412	9.95 %	40	300	13.33 %
Leg. Dist. 29	2	8	25.00 %	16	267	5.99 %	42	454	9.25 %	48	325	14.77 %
TOTAL:	34	57	59.65 %	169	2,075	8.14 %	909	4,482	20.28 %	897	3,224	27.82 %
TOWNS												
Brighton	15	24	62.50 %	62	415	14.94 %	256	869	29.46 %	337	754	44.69 %
Chili	8	17	47.06 %	57	480	11.88 %	206	864	23.84 %	263	758	34.70 %
Clarkson	0	0	0.00 %	10	92	10.87 %	38	136	27.94 %	53	168	31.55 %
East Rochester	2	7	28.57 %	15	114	13.16 %	55	224	24.55 %	49	139	35.25 %
Gates	2	5	40.00 %	54	368	14.67 %	158	813	19.43 %	163	668	24.40 %
Greece	41	57	71.93 %	154	1,488	10.35 %	550	2,662	20.66 %	636	2,286	27.82 %
Hamlin	0	0	0.00 %	15	147	10.20 %	38	213	17.84 %	59	219	26.94 %
Henrietta	6	7	85.71 %	52	500	10.40 %	221	923	23.94 %	281	884	31.79 %
Irondequoit	38	57	66.67 %	104	799	13.02 %	345	1,482	23.28 %	492	1,322	37.22 %
Mendon	2	3	66.67 %	30	183	16.39 %	40	163	24.54 %	92	226	40.71 %
Ogden	9	11	81.82 %	41	311	13.18 %	106	503	21.07 %	163	514	31.71 %
Parma	2	3	66.67 %	36	351	10.26 %	68	438	15.53 %	147	449	32.74 %
Penfield	18	30	60.00 %	81	588	13.78 %	202	841	24.02 %	417	1,032	40.41 %
Perinton	9	12	75.00 %	135	926	14.58 %	283	1,072	26.40 %	526	1,247	42.18 %
Pittsford	8	9	88.89 %	68	477	14.26 %	127	535	23.74 %	300	718	41.78 %
Riga	0	1	0.00 %	15	98	15.31 %	29	134	21.64 %	54	146	36.99 %
Rush	1	1	100.00 %	12	56	21.43 %	14	77	18.18 %	31	89	34.83 %
Sweden	0	1	0.00 %	23	175	13.14 %	54	259	20.85 %	73	236	30.93 %
Webster	22	35	62.86 %	89	629	14.15 %	218	963	22.64 %	430	1,210	35.54 %
Wheatland	1	1	100.00 %	9	83	10.84 %	30	137	21.90 %	20	90	22.22 %
TOTAL:	184	281	65.48 %	1,062	8,280	12.83 %	3,038	13,308	22.83 %	4,586	13,155	34.86 %
GRAND TOTAL:	218	338	64.50 %	1,231	10,355	11.89 %	3,947	17,790	22.19 %	5,483	16,379	33.48 %

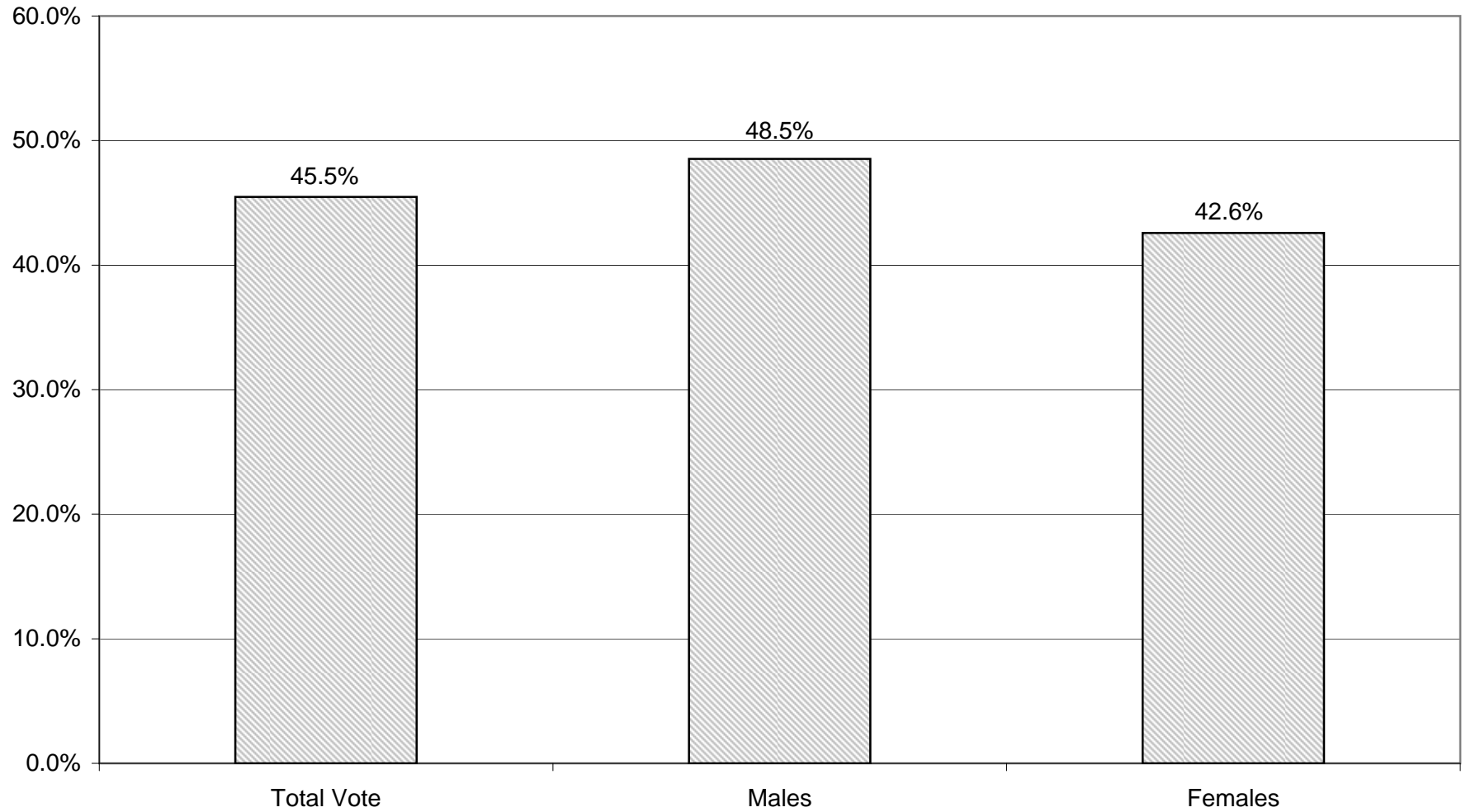
2010 GENERAL ELECTION
BLANK TURNOUT BY AGE

LT/LD SUMMARY

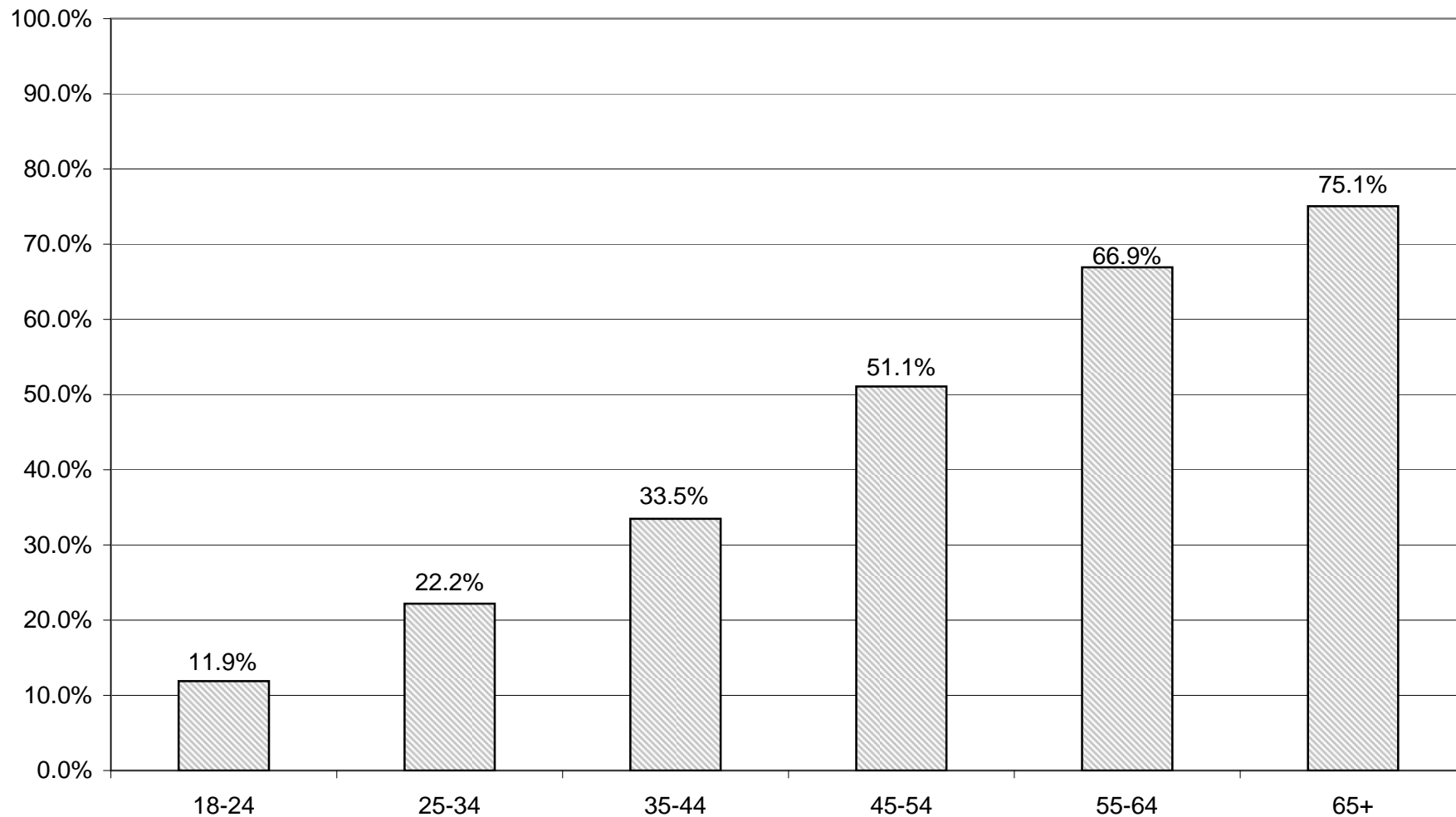
Part 2 of 2

LEGISLATIVE DISTRICT OR TOWN CITY	45-54			55-64			65+		
	VOTED	REGISTERED	TURNOUT	VOTED	REGISTERED	TURNOUT	VOTED	REGISTERED	TURNOUT
Leg. Dist. 06	80	146	54.79 %	101	154	65.58 %	69	88	78.41 %
Leg. Dist. 07	36	71	50.70 %	53	87	60.92 %	43	55	78.18 %
Leg. Dist. 21	174	419	41.53 %	195	354	55.08 %	152	227	66.96 %
Leg. Dist. 22	23	213	10.80 %	47	160	29.38 %	22	91	24.18 %
Leg. Dist. 23	232	424	54.72 %	297	455	65.27 %	222	281	79.00 %
Leg. Dist. 24	141	265	53.21 %	160	256	62.50 %	118	203	58.13 %
Leg. Dist. 25	65	205	31.71 %	100	206	48.54 %	68	144	47.22 %
Leg. Dist. 26	108	273	39.56 %	118	207	57.00 %	68	118	57.63 %
Leg. Dist. 27	76	312	24.36 %	115	267	43.07 %	88	166	53.01 %
Leg. Dist. 28	88	347	25.36 %	113	247	45.75 %	73	147	49.66 %
Leg. Dist. 29	88	343	25.66 %	119	287	41.46 %	82	179	45.81 %
TOTAL:	1,111	3,018	36.81 %	1,418	2,680	52.91 %	1,005	1,699	59.15 %
TOWNS									
Brighton	560	959	58.39 %	752	1,032	72.87 %	722	949	76.08 %
Chili	493	952	51.79 %	651	919	70.84 %	386	507	76.13 %
Clarkson	112	214	52.34 %	106	152	69.74 %	58	78	74.36 %
East Rochester	95	184	51.63 %	106	165	64.24 %	104	133	78.20 %
Gates	378	888	42.57 %	421	704	59.80 %	432	630	68.57 %
Greece	1,498	3,185	47.03 %	1,995	3,103	64.29 %	1,536	2,057	74.67 %
Hamlin	130	287	45.30 %	162	264	61.36 %	82	103	79.61 %
Henrietta	504	1,069	47.15 %	587	944	62.18 %	532	679	78.35 %
Irondequoit	908	1,678	54.11 %	1,192	1,713	69.59 %	1,002	1,394	71.88 %
Mendon	267	396	67.42 %	244	310	78.71 %	147	182	80.77 %
Ogden	413	788	52.41 %	426	626	68.05 %	280	350	80.00 %
Parma	348	663	52.49 %	345	507	68.05 %	228	298	76.51 %
Penfield	821	1,387	59.19 %	1,002	1,415	70.81 %	800	1,025	78.05 %
Perinton	1,086	1,756	61.85 %	1,371	1,780	77.02 %	1,110	1,357	81.80 %
Pittsford	632	1,065	59.34 %	692	930	74.41 %	766	922	83.08 %
Riga	118	230	51.30 %	127	199	63.82 %	96	102	94.12 %
Rush	98	162	60.49 %	113	161	70.19 %	98	102	96.08 %
Sweden	167	350	47.71 %	230	320	71.88 %	132	169	78.11 %
Webster	972	1,769	54.95 %	1,103	1,563	70.57 %	910	1,142	79.68 %
Wheatland	108	183	59.02 %	108	166	65.06 %	50	80	62.50 %
TOTAL:	9,708	18,165	53.44 %	11,733	16,973	69.13 %	9,471	12,259	77.26 %
GRAND TOTAL:	10,819	21,183	51.07 %	13,151	19,653	66.92 %	10,476	13,958	75.05 %

BLANKS TURNOUT - TOTAL AND GENDER 2010 GENERAL ELECTION

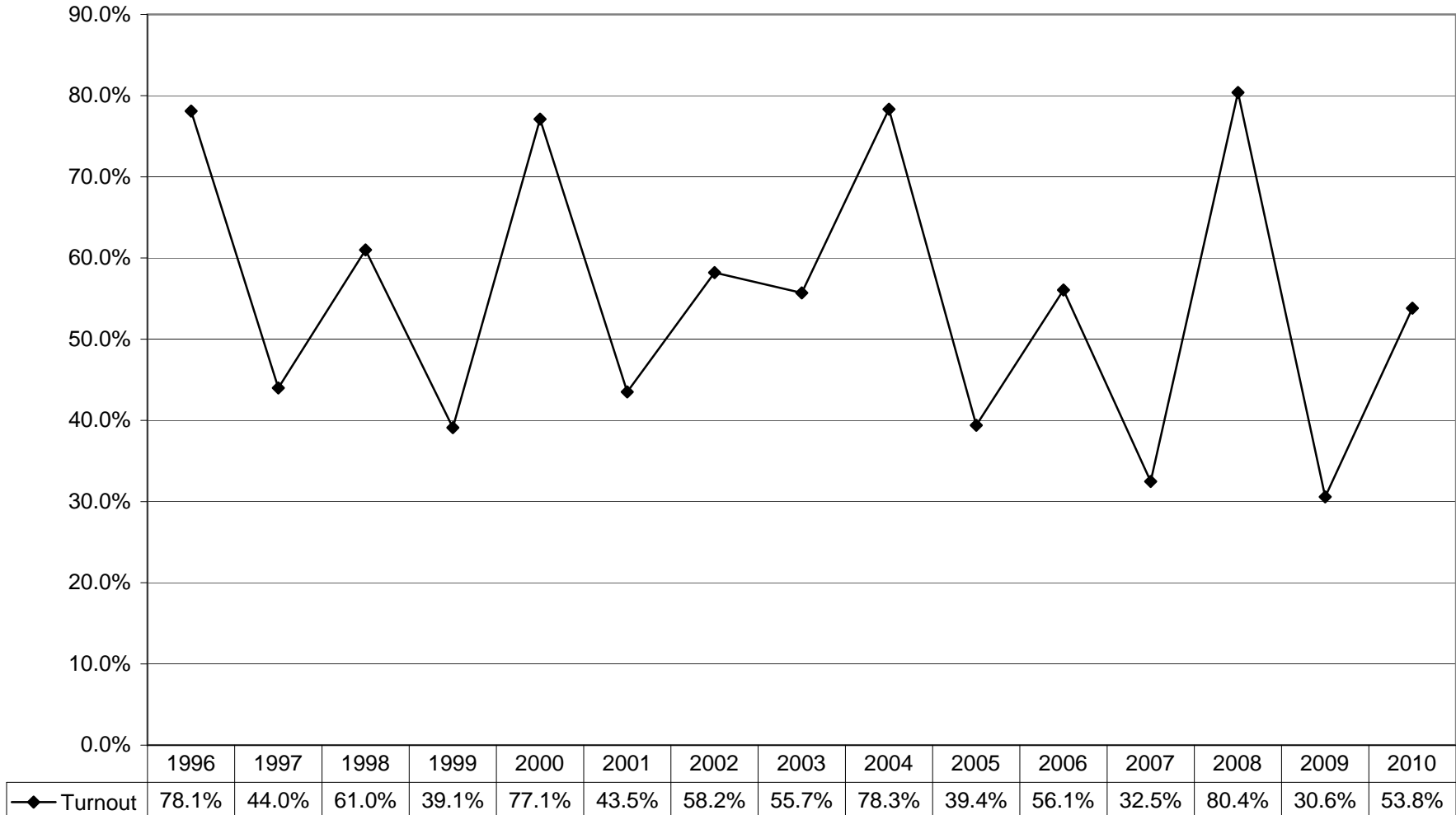


BLANKS TURNOUT BY AGE GROUP 2010 GENERAL ELECTION



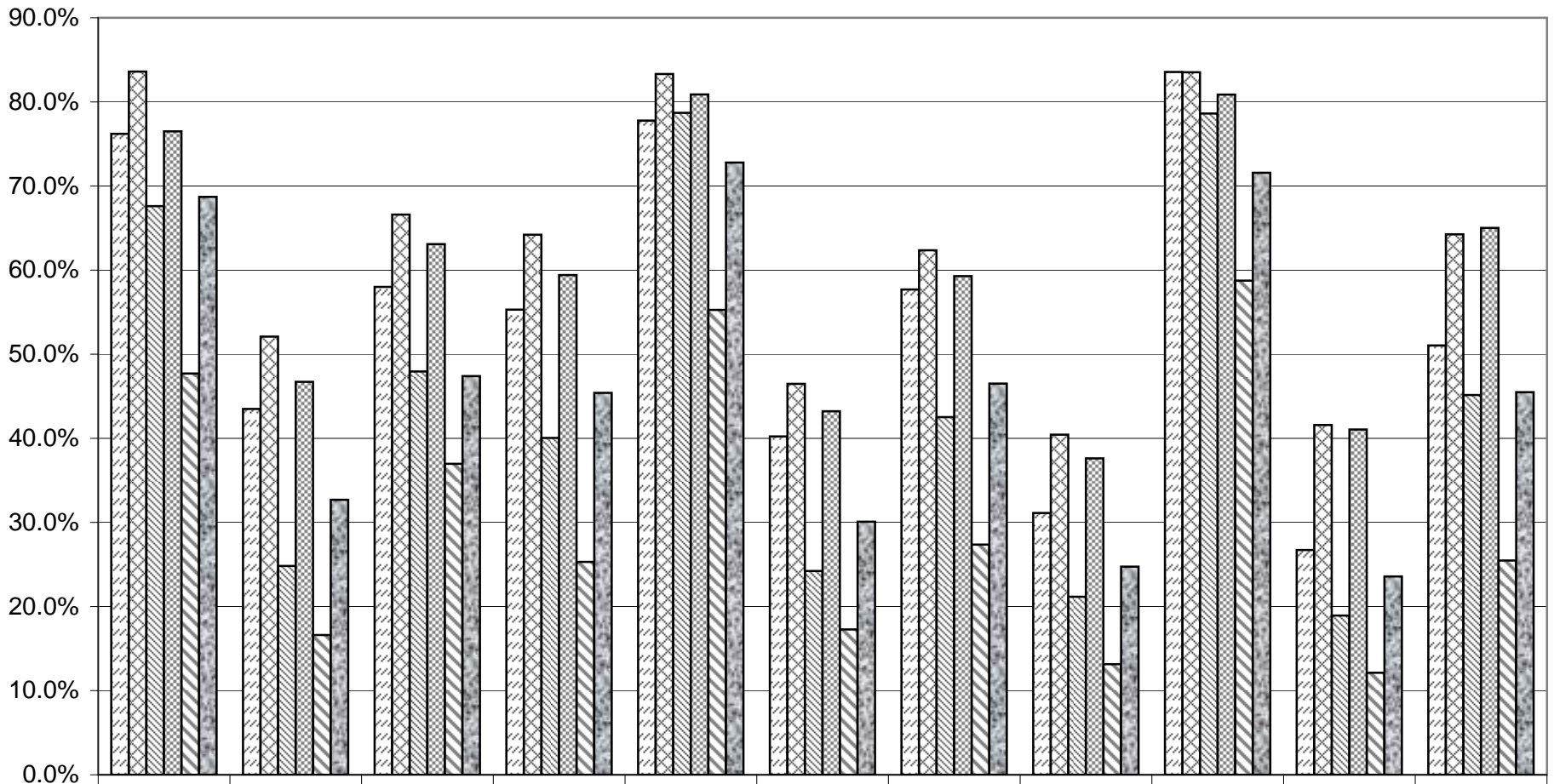
HISTORIC DATA

VOTER TURNOUT FOR THE GENERAL ELECTION 1996 Through 2010



VOTER TURNOUT BY PARTY

2000 Through 2010 General Elections



	2000	2001	2002	2003	2004	2005	2006	2007	2008	2009	2010
Democrats	76.2%	43.5%	58.0%	55.3%	77.8%	40.2%	57.7%	31.1%	83.6%	26.7%	51.0%
Republicans	83.6%	52.1%	66.6%	64.2%	83.3%	46.5%	62.4%	40.4%	83.5%	41.6%	64.3%
Independence	67.6%	24.8%	47.9%	40.0%	78.7%	24.2%	42.5%	21.2%	78.6%	18.9%	45.2%
Conservative	76.5%	46.7%	63.1%	59.4%	80.9%	43.2%	59.3%	37.6%	80.9%	41.1%	65.0%
Working Families	47.7%	16.6%	37.0%	25.3%	55.3%	17.3%	27.4%	13.2%	58.8%	12.1%	25.5%
Blanks	68.7%	32.7%	47.4%	45.4%	72.8%	30.1%	46.5%	24.7%	71.6%	23.6%	45.5%