



VOTER TURNOUT SUMMARY REPORT 2012 GENERAL ELECTION

Monroe County Board of Elections
39 West Main Street, Rochester, New York 14614

February 28, 2013

Peter M. Quinn
Commissioner of Elections

Thomas F. Ferrarese
Commissioner of Elections

CONTENTS DESCRIPTION

General Summary.....	Page 1
Democratic Summary.....	Page 12
Republican Summary	Page 18
Conservative Summary	Page 24
Working Families Summary.....	Page 30
Independence Summary.....	Page 36
Green Summary.....	Page 42
Blank Summary.....	Page 48
Historical Data.....	Page 54

GENERAL SUMMARY

2012 GENERAL ELECTION
VOTER TURNOUT BY GENDER

LT/LD SUMMARY

LEGISLATIVE DISTRICT OR TOWN	TOTAL VOTERS			MALES			FEMALES		
	VOTED	REGISTERED	TURNOUT	VOTED	REGISTERED	TURNOUT	VOTED	REGISTERED	TURNOUT
CITY									
Leg. Dist. 07	861	1,182	72.84%	379	520	72.88%	482	662	72.81%
Leg. Dist. 16	10	15	66.67%	5	7	71.43%	5	8	62.50%
Leg. Dist. 21	9,090	12,141	74.87%	3,670	5,143	71.36%	5,420	6,998	77.45%
Leg. Dist. 22	7,179	10,877	66.00%	2,730	4,559	59.88%	4,449	6,318	70.42%
Leg. Dist. 23	9,682	12,109	79.96%	4,681	5,898	79.37%	5,001	6,211	80.52%
Leg. Dist. 24	5,866	7,327	80.06%	2,699	3,427	78.76%	3,167	3,900	81.21%
Leg. Dist. 25	8,273	11,589	71.39%	3,336	5,083	65.63%	4,937	6,506	75.88%
Leg. Dist. 26	5,832	7,958	73.28%	2,385	3,360	70.98%	3,447	4,598	74.97%
Leg. Dist. 27	10,584	14,149	74.80%	4,132	5,928	69.70%	6,452	8,221	78.48%
Leg. Dist. 28	6,268	9,549	65.64%	2,451	3,987	61.47%	3,817	5,562	68.63%
Leg. Dist. 29	7,950	11,570	68.71%	3,081	4,793	64.28%	4,869	6,777	71.85%
CITY TOTAL:	71,595	98,466	72.71%	29,549	42,705	69.19%	42,046	55,761	75.40%
TOWNS									
Brighton	18,000	21,937	82.05%	7,889	9,774	80.71%	10,111	12,163	83.13%
Chili	14,395	18,809	76.53%	6,644	8,825	75.29%	7,751	9,984	77.63%
Clarkson	2,919	3,892	75.00%	1,389	1,848	75.16%	1,530	2,044	74.85%
East Rochester	2,652	3,722	71.25%	1,166	1,686	69.16%	1,486	2,036	72.99%
Gates	12,803	17,643	72.57%	5,671	7,899	71.79%	7,132	9,744	73.19%
Greece	45,213	61,218	73.86%	20,462	27,840	73.50%	24,751	33,378	74.15%
Hamlin	3,808	5,235	72.74%	1,863	2,531	73.61%	1,945	2,704	71.93%
Henrietta	16,713	21,854	76.48%	7,682	10,203	75.29%	9,031	11,651	77.51%
Irondequoit	26,286	34,130	77.02%	11,534	15,048	76.65%	14,752	19,082	77.31%
Mendon	5,210	6,469	80.54%	2,511	3,141	79.94%	2,699	3,328	81.10%
Ogden	9,768	12,582	77.63%	4,520	5,865	77.07%	5,248	6,717	78.13%
Parma	7,654	10,336	74.05%	3,647	4,959	73.54%	4,007	5,377	74.52%
Penfield	20,303	25,216	80.52%	9,391	11,724	80.10%	10,912	13,492	80.88%
Perinton	26,843	33,073	81.16%	12,350	15,381	80.29%	14,493	17,692	81.92%
Pittsford	16,222	19,712	82.30%	7,477	9,163	81.60%	8,745	10,549	82.90%
Riga	2,941	3,879	75.82%	1,381	1,854	74.49%	1,560	2,025	77.04%
Rush	2,078	2,564	81.05%	994	1,249	79.58%	1,084	1,315	82.43%
Sweden	4,802	6,299	76.23%	2,188	2,900	75.45%	2,614	3,399	76.90%
Webster	22,729	28,525	79.68%	10,550	13,180	80.05%	12,179	15,345	79.37%
Wheatland	2,454	3,184	77.07%	1,152	1,489	77.37%	1,302	1,695	76.81%
TOWNS TOTAL:	263,793	340,279	77.52%	120,461	156,559	76.94%	143,332	183,720	78.02%
GRAND TOTAL:	335,388	438,745	76.44%	150,010	199,264	75.28%	185,378	239,481	77.41%

2012 GENERAL ELECTION
VOTER TURNOUT BY PARTY

LT/LD SUMMARY
Part 1 of 2

LEGISLATIVE DISTRICT OR TOWN	DEMOCRAT			REPUBLICAN			CONSERVATIVE			WORKING FAMILIES		
	VOTED	REGISTERED	TURNOUT	VOTED	REGISTERED	TURNOUT	VOTED	REGISTERED	TURNOUT	VOTED	REGISTERED	TURNOUT
CITY												
Leg. Dist. 07	353	481	73.39%	248	325	76.31%	17	22	77.27%	4	6	66.67%
Leg. Dist. 16	3	5	60.00%	4	5	80.00%	0	0	0.00%	0	0	0.00%
Leg. Dist. 21	5,961	7,625	78.18%	1,074	1,473	72.91%	72	92	78.26%	40	66	60.61%
Leg. Dist. 22	5,663	8,062	70.24%	382	654	58.41%	37	54	68.52%	45	93	48.39%
Leg. Dist. 23	5,199	6,203	83.81%	1,728	2,184	79.12%	88	114	77.19%	28	42	66.67%
Leg. Dist. 24	3,403	4,044	84.15%	846	1,101	76.84%	41	52	78.85%	31	37	83.78%
Leg. Dist. 25	6,330	8,463	74.80%	554	871	63.61%	35	54	64.81%	29	60	48.33%
Leg. Dist. 26	2,961	3,813	77.66%	1,306	1,733	75.36%	135	165	81.82%	25	43	58.14%
Leg. Dist. 27	8,100	10,318	78.50%	809	1,119	72.30%	73	102	71.57%	55	79	69.62%
Leg. Dist. 28	4,320	6,089	70.95%	722	1,147	62.95%	60	96	62.50%	41	73	56.16%
Leg. Dist. 29	5,695	7,696	74.00%	862	1,271	67.82%	71	118	60.17%	37	90	41.11%
CITY TOTAL:	47,988	62,799	76.42%	8,535	11,883	71.83%	629	869	72.38%	335	589	56.88%
TOWNS												
Brighton	8,510	9,924	85.75%	4,583	5,533	82.83%	170	208	81.73%	26	32	81.25%
Chili	4,681	5,966	78.46%	5,603	6,957	80.54%	358	440	81.36%	27	47	57.45%
Clarkson	741	995	74.47%	1,343	1,680	79.94%	104	121	85.95%	4	11	36.36%
East Rochester	918	1,266	72.51%	851	1,117	76.19%	60	81	74.07%	12	22	54.55%
Gates	4,998	6,647	75.19%	4,323	5,622	76.89%	315	391	80.56%	34	71	47.89%
Greece	14,438	19,225	75.10%	17,310	21,979	78.76%	1,245	1,584	78.60%	110	200	55.00%
Hamlin	838	1,179	71.08%	1,855	2,323	79.85%	113	142	79.58%	9	18	50.00%
Henrietta	6,215	7,941	78.26%	5,768	7,151	80.66%	355	458	77.51%	32	47	68.09%
Irondequoit	10,519	13,165	79.90%	7,921	9,966	79.48%	538	683	78.77%	39	72	54.17%
Mendon	1,388	1,754	79.13%	2,299	2,695	85.31%	90	117	76.92%	5	7	71.43%
Ogden	2,514	3,246	77.45%	4,262	5,145	82.84%	304	371	81.94%	20	33	60.61%
Parma	1,804	2,489	72.48%	3,396	4,245	80.00%	222	270	82.22%	36	52	69.23%
Penfield	6,258	7,673	81.56%	7,748	9,222	84.02%	362	424	85.38%	20	36	55.56%
Perinton	8,073	9,843	82.02%	10,849	12,755	85.06%	398	477	83.44%	33	55	60.00%
Pittsford	5,245	6,249	83.93%	6,390	7,508	85.11%	181	215	84.19%	7	12	58.33%
Riga	659	856	76.99%	1,416	1,755	80.68%	90	102	88.24%	5	12	41.67%
Rush	566	693	81.67%	891	1,040	85.67%	47	56	83.93%	8	11	72.73%
Sweden	1,451	1,880	77.18%	1,907	2,354	81.01%	109	132	82.58%	9	25	36.00%
Webster	6,874	8,499	80.88%	8,633	10,285	83.94%	522	610	85.57%	34	54	62.96%
Wheatland	739	945	78.20%	1,016	1,241	81.87%	74	89	83.15%	5	8	62.50%
TOWNS TOTAL:	87,429	110,435	79.17%	98,364	120,573	81.58%	5,657	6,971	81.15%	475	825	57.58%
GRAND TOTAL:	135,417	173,234	78.17%	106,899	132,456	80.71%	6,286	7,840	80.18%	810	1,414	57.28%

2012 GENERAL ELECTION
VOTER TURNOUT BY PARTY

LT/LD SUMMARY
Part 2 of 2

LEGISLATIVE DISTRICT OR TOWN	INDEPENDENCE			GREEN			BLANK		
	VOTED	REGISTERED	TURNOUT	VOTED	REGISTERED	TURNOUT	VOTED	REGISTERED	TURNOUT
CITY									
Leg. Dist. 07	53	64	82.81%	3	5	60.00%	183	279	65.59%
Leg. Dist. 16	2	2	100.00%	0	0	0.00%	1	3	33.33%
Leg. Dist. 21	334	471	70.91%	41	46	89.13%	1,568	2,368	66.22%
Leg. Dist. 22	114	215	53.02%	8	11	72.73%	930	1,788	52.01%
Leg. Dist. 23	429	583	73.58%	73	92	79.35%	2,137	2,891	73.92%
Leg. Dist. 24	235	321	73.21%	62	74	83.78%	1,248	1,698	73.50%
Leg. Dist. 25	196	315	62.22%	30	37	81.08%	1,099	1,789	61.43%
Leg. Dist. 26	271	392	69.13%	8	14	57.14%	1,126	1,798	62.63%
Leg. Dist. 27	283	426	66.43%	17	27	62.96%	1,247	2,078	60.01%
Leg. Dist. 28	182	298	61.07%	16	20	80.00%	927	1,826	50.77%
Leg. Dist. 29	191	323	59.13%	9	13	69.23%	1,085	2,059	52.70%
CITY TOTAL:	2,290	3,410	67.16%	267	339	78.76%	11,551	18,577	62.18%
TOWNS									
Brighton	704	935	75.29%	58	80	72.50%	3,949	5,225	75.58%
Chili	539	793	67.97%	22	29	75.86%	3,165	4,577	69.15%
Clarkson	145	203	71.43%	0	0	0.00%	582	882	65.99%
East Rochester	169	251	67.33%	7	12	58.33%	635	973	65.26%
Gates	550	801	68.66%	21	29	72.41%	2,562	4,082	62.76%
Greece	1,966	2,894	67.93%	51	107	47.66%	10,093	15,229	66.27%
Hamlin	183	286	63.99%	12	14	85.71%	798	1,273	62.69%
Henrietta	726	1,004	72.31%	22	27	81.48%	3,595	5,226	68.79%
Irondequoit	1,176	1,651	71.23%	64	87	73.56%	6,029	8,506	70.88%
Mendon	252	337	74.78%	11	20	55.00%	1,165	1,539	75.70%
Ogden	420	617	68.07%	16	25	64.00%	2,232	3,145	70.97%
Parma	374	522	71.65%	9	14	64.29%	1,813	2,744	66.07%
Penfield	962	1,271	75.69%	21	31	67.74%	4,932	6,559	75.19%
Perinton	1,157	1,497	77.29%	51	84	60.71%	6,282	8,362	75.13%
Pittsford	654	843	77.58%	13	29	44.83%	3,732	4,856	76.85%
Riga	149	209	71.29%	3	6	50.00%	619	939	65.92%
Rush	76	107	71.03%	5	7	71.43%	485	650	74.62%
Sweden	238	348	68.39%	16	22	72.73%	1,072	1,538	69.70%
Webster	1,090	1,502	72.57%	19	37	51.35%	5,557	7,538	73.72%
Wheatland	123	169	72.78%	2	6	33.33%	495	726	68.18%
TOWNS TOTAL:	11,653	16,240	71.75%	423	666	63.51%	59,792	84,569	70.70%
GRAND TOTAL:	13,943	19,650	70.96%	690	1,005	68.66%	71,343	103,146	69.17%

2012 GENERAL ELECTION
VOTER TURNOUT BY AGE

LT/LD SUMMARY
Part 1 of 2

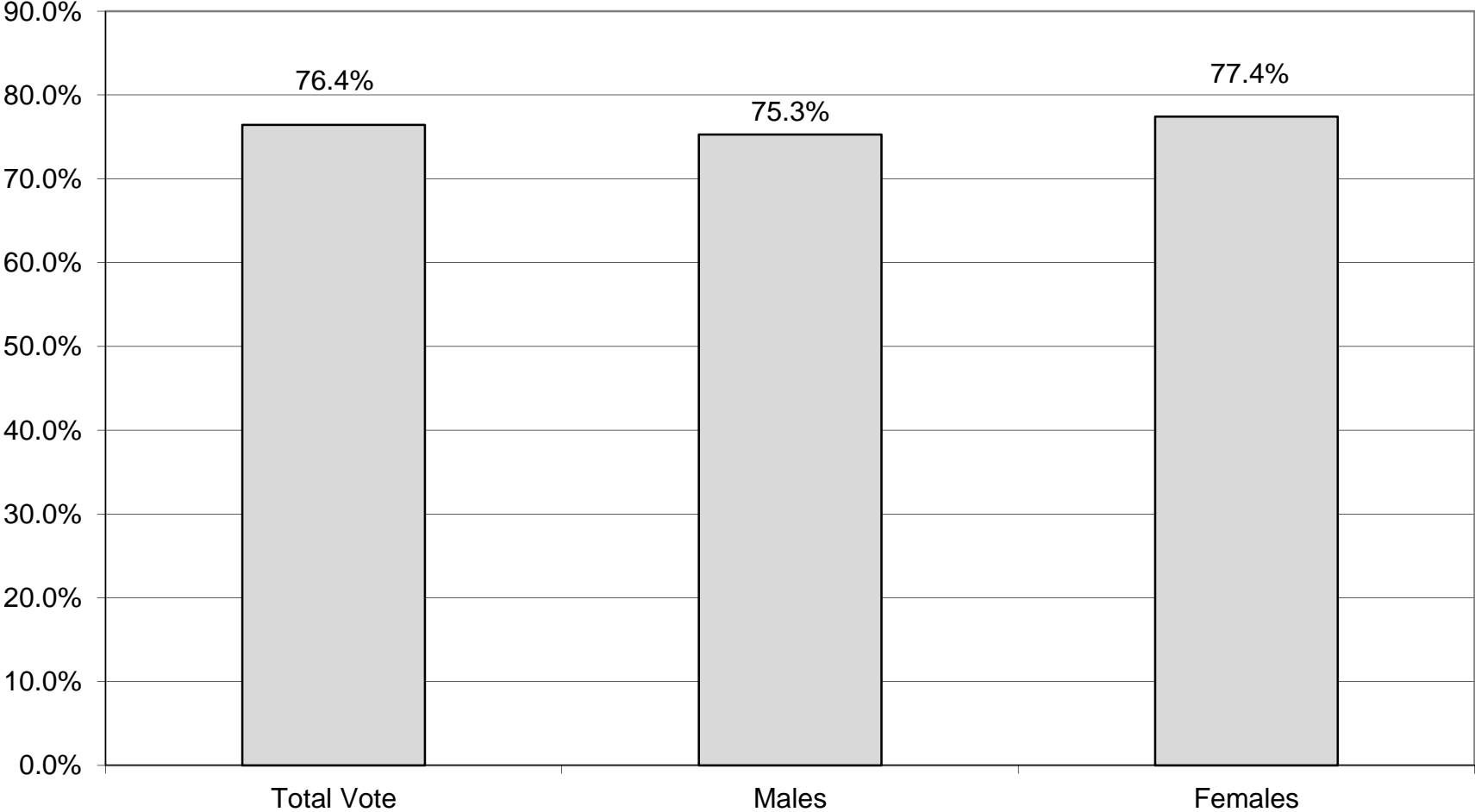
LEGISLATIVE DISTRICT OR TOWN	NDOB			18-24			25-34			35-44		
	VOTED	REGISTERED	TURNOUT	VOTED	REGISTERED	TURNOUT	VOTED	REGISTERED	TURNOUT	VOTED	REGISTERED	TURNOUT
Leg. Dist. 07	7	16	43.75%	43	68	63.24%	95	152	62.50%	92	137	67.15%
Leg. Dist. 16	0	1	0.00%	0	0	0.00%	0	2	0.00%	0	0	0.00%
Leg. Dist. 21	76	119	63.87%	819	1,252	65.42%	1,860	2,616	71.10%	1,682	2,284	73.64%
Leg. Dist. 22	29	48	60.42%	923	1,511	61.09%	1,264	2,072	61.00%	1,139	1,871	60.88%
Leg. Dist. 23	80	106	75.47%	632	950	66.53%	2,436	3,256	74.82%	1,427	1,805	79.06%
Leg. Dist. 24	38	58	65.52%	375	523	71.70%	1,498	1,952	76.74%	935	1,141	81.95%
Leg. Dist. 25	52	83	62.65%	960	1,542	62.26%	1,666	2,422	68.79%	1,252	1,830	68.42%
Leg. Dist. 26	51	83	61.45%	360	627	57.42%	1,020	1,531	66.62%	928	1,335	69.51%
Leg. Dist. 27	55	82	67.07%	1,194	1,778	67.15%	1,725	2,561	67.36%	1,754	2,387	73.48%
Leg. Dist. 28	42	65	64.62%	656	1,145	57.29%	1,148	1,932	59.42%	1,175	1,739	67.57%
Leg. Dist. 29	55	93	59.14%	780	1,317	59.23%	1,297	2,128	60.95%	1,277	1,912	66.79%
CITY TOTAL:	485	754	64.32%	6,742	10,713	62.93%	14,009	20,624	67.93%	11,661	16,441	70.93%
Brighton	186	256	72.66%	1,111	1,767	62.87%	2,120	3,093	68.54%	2,572	3,121	82.41%
Chili	170	235	72.34%	941	1,524	61.75%	1,709	2,830	60.39%	2,081	2,915	71.39%
Clarkson	4	6	66.67%	165	300	55.00%	275	481	57.17%	485	690	70.29%
East Rochester	53	73	72.60%	173	330	52.42%	394	643	61.28%	388	588	65.99%
Gates	55	96	57.29%	693	1,183	58.58%	1,504	2,659	56.56%	1,763	2,579	68.36%
Greece	510	781	65.30%	2,730	5,017	54.41%	5,223	8,916	58.58%	5,712	8,519	67.05%
Hamlin	9	20	45.00%	231	451	51.22%	382	719	53.13%	503	775	64.90%
Henrietta	44	73	60.27%	1,155	1,851	62.40%	2,100	3,298	63.67%	2,500	3,420	73.10%
Irondequoit	339	492	68.90%	1,400	2,458	56.96%	3,298	5,090	64.79%	3,771	4,973	75.83%
Mendon	9	14	64.29%	387	742	52.16%	336	641	52.42%	728	887	82.07%
Ogden	76	95	80.00%	648	1,051	61.66%	1,033	1,715	60.23%	1,437	1,937	74.19%
Parma	22	51	43.14%	494	957	51.62%	683	1,331	51.31%	1,079	1,525	70.75%
Penfield	176	249	70.68%	1,125	1,929	58.32%	1,872	2,946	63.54%	2,970	3,707	80.12%
Perinton	49	86	56.98%	1,607	3,116	51.57%	2,342	3,732	62.75%	3,718	4,653	79.91%
Pittsford	75	101	74.26%	1,030	1,760	58.52%	1,050	1,849	56.79%	2,259	2,748	82.21%
Riga	5	14	35.71%	193	320	60.31%	256	491	52.14%	364	524	69.47%
Rush	45	55	81.82%	129	220	58.64%	136	255	53.33%	211	274	77.01%
Sweden	24	39	61.54%	409	627	65.23%	530	932	56.87%	649	897	72.35%
Webster	191	272	70.22%	1,238	2,063	60.01%	1,980	3,288	60.22%	3,386	4,396	77.02%
Wheatland	11	15	73.33%	150	272	55.15%	279	476	58.61%	313	420	74.52%
TOWNS TOTAL:	2,053	3,023	67.91%	16,009	27,938	57.30%	27,502	45,385	60.60%	36,889	49,548	74.45%
GRAND TOTAL:	2,538	3,777	67.20%	22,751	38,651	58.86%	41,511	66,009	62.89%	48,550	65,989	73.57%

2012 GENERAL ELECTION
VOTER TURNOUT BY AGE

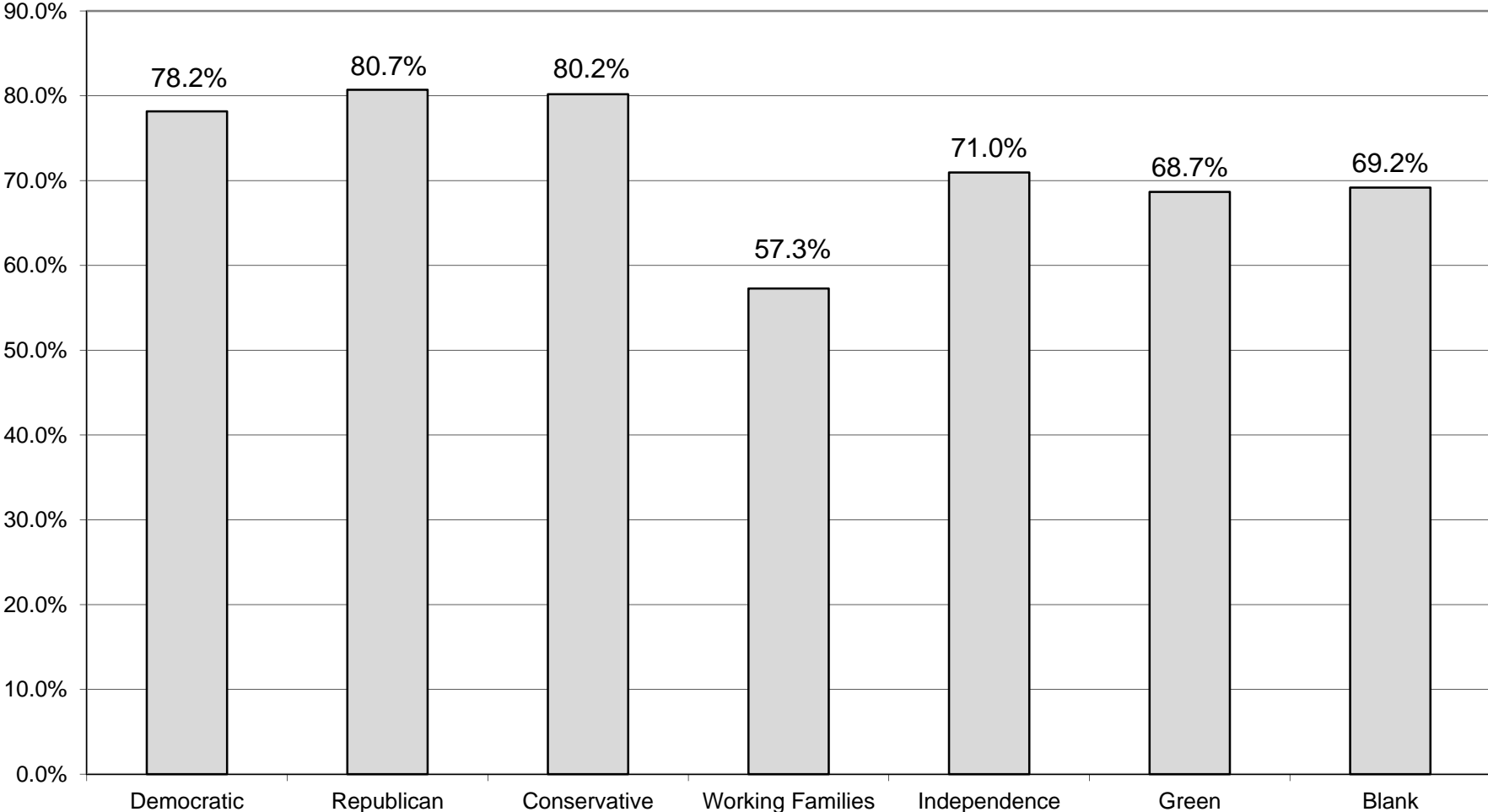
LT/LD SUMMARY
Part 2 of 2

LEGISLATIVE DISTRICT OR TOWN	45-54			55-64			65+		
	VOTED	REGISTERED	TURNOUT	VOTED	REGISTERED	TURNOUT	VOTED	REGISTERED	TURNOUT
Leg. Dist. 07	139	200	69.50%	248	297	83.50%	237	312	75.96%
Leg. Dist. 16	0	0	0.00%	6	8	75.00%	4	4	100.00%
Leg. Dist. 21	1,756	2,273	77.25%	1,617	1,957	82.63%	1,280	1,640	78.05%
Leg. Dist. 22	1,450	2,124	68.27%	1,281	1,703	75.22%	1,093	1,548	70.61%
Leg. Dist. 23	1,613	1,949	82.76%	1,798	2,069	86.90%	1,696	1,974	85.92%
Leg. Dist. 24	1,002	1,228	81.60%	1,090	1,272	85.69%	928	1,153	80.49%
Leg. Dist. 25	1,503	2,068	72.68%	1,405	1,775	79.15%	1,435	1,869	76.78%
Leg. Dist. 26	1,208	1,571	76.89%	1,205	1,479	81.47%	1,060	1,332	79.58%
Leg. Dist. 27	2,203	2,776	79.36%	1,902	2,327	81.74%	1,751	2,238	78.24%
Leg. Dist. 28	1,304	1,931	67.53%	1,149	1,593	72.13%	794	1,144	69.41%
Leg. Dist. 29	1,625	2,217	73.30%	1,523	1,998	76.23%	1,393	1,905	73.12%
CITY TOTAL:	13,803	18,337	75.27%	13,224	16,478	80.25%	11,671	15,119	77.19%
Brighton	3,330	3,833	86.88%	3,661	4,091	89.49%	5,020	5,776	86.91%
Chili	3,078	3,783	81.36%	3,077	3,507	87.74%	3,339	4,015	83.16%
Clarkson	712	885	80.45%	648	757	85.60%	630	773	81.50%
East Rochester	560	728	76.92%	559	688	81.25%	525	672	78.13%
Gates	2,532	3,334	75.94%	2,502	3,052	81.98%	3,754	4,740	79.20%
Greece	9,034	11,510	78.49%	10,170	12,002	84.74%	11,834	14,473	81.77%
Hamlin	933	1,198	77.88%	953	1,101	86.56%	797	971	82.08%
Henrietta	3,386	4,268	79.33%	3,414	4,015	85.03%	4,114	4,929	83.47%
Irondequoit	5,186	6,331	81.91%	5,654	6,549	86.33%	6,638	8,237	80.59%
Mendon	1,466	1,639	89.44%	1,203	1,337	89.98%	1,081	1,209	89.41%
Ogden	2,314	2,821	82.03%	2,161	2,495	86.61%	2,099	2,468	85.05%
Parma	1,759	2,202	79.88%	1,788	2,096	85.31%	1,829	2,174	84.13%
Penfield	4,543	5,304	85.65%	4,469	5,021	89.01%	5,148	6,060	84.95%
Perinton	6,027	6,892	87.45%	5,870	6,471	90.71%	7,230	8,123	89.01%
Pittsford	3,710	4,212	88.08%	3,450	3,797	90.86%	4,648	5,245	88.62%
Riga	745	936	79.59%	701	819	85.59%	677	775	87.35%
Rush	501	586	85.49%	529	585	90.43%	527	589	89.47%
Sweden	999	1,245	80.24%	1,111	1,276	87.07%	1,080	1,283	84.18%
Webster	5,224	6,192	84.37%	4,909	5,540	88.61%	5,801	6,774	85.64%
Wheatland	538	645	83.41%	592	681	86.93%	571	675	84.59%
TOWNS TOTAL:	56,577	68,544	82.54%	57,421	65,880	87.16%	67,342	79,961	84.22%
GRAND TOTAL:	70,380	86,881	81.01%	70,645	82,358	85.78%	79,013	95,080	83.10%

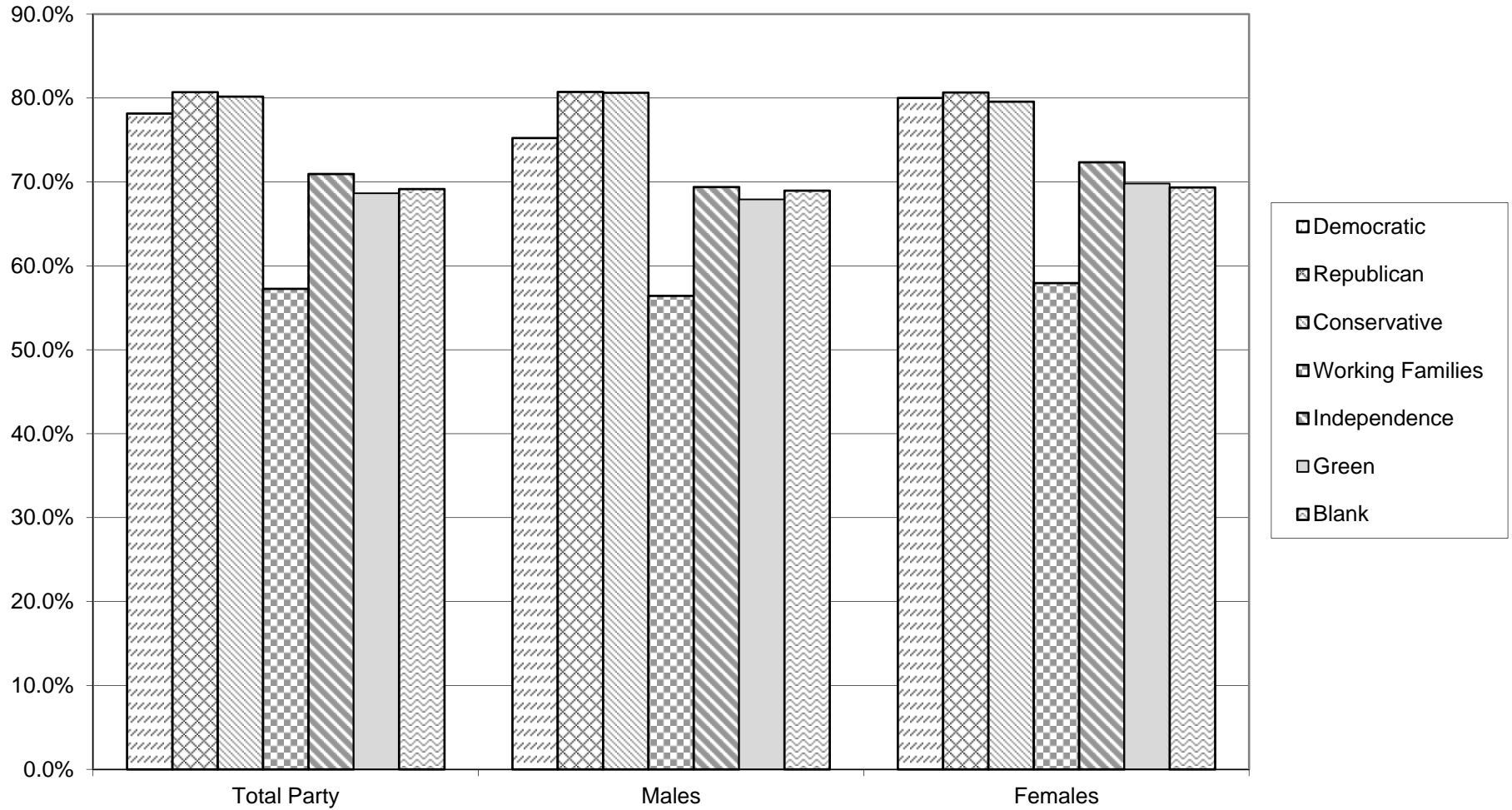
VOTER TURNOUT - TOTAL AND BY GENDER 2012 GENERAL ELECTION



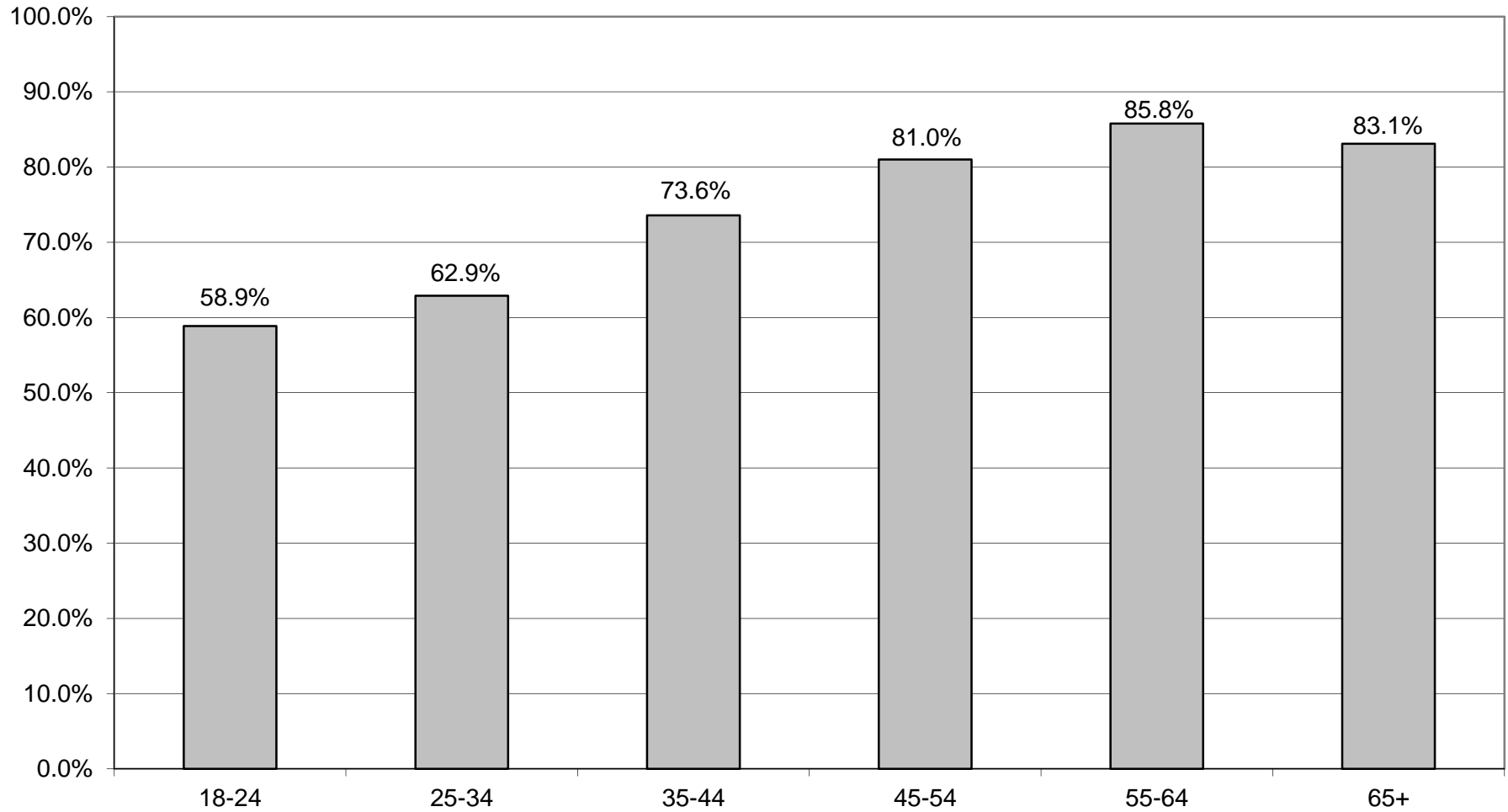
VOTER TURNOUT BY PARTY 2012 GENERAL ELECTION



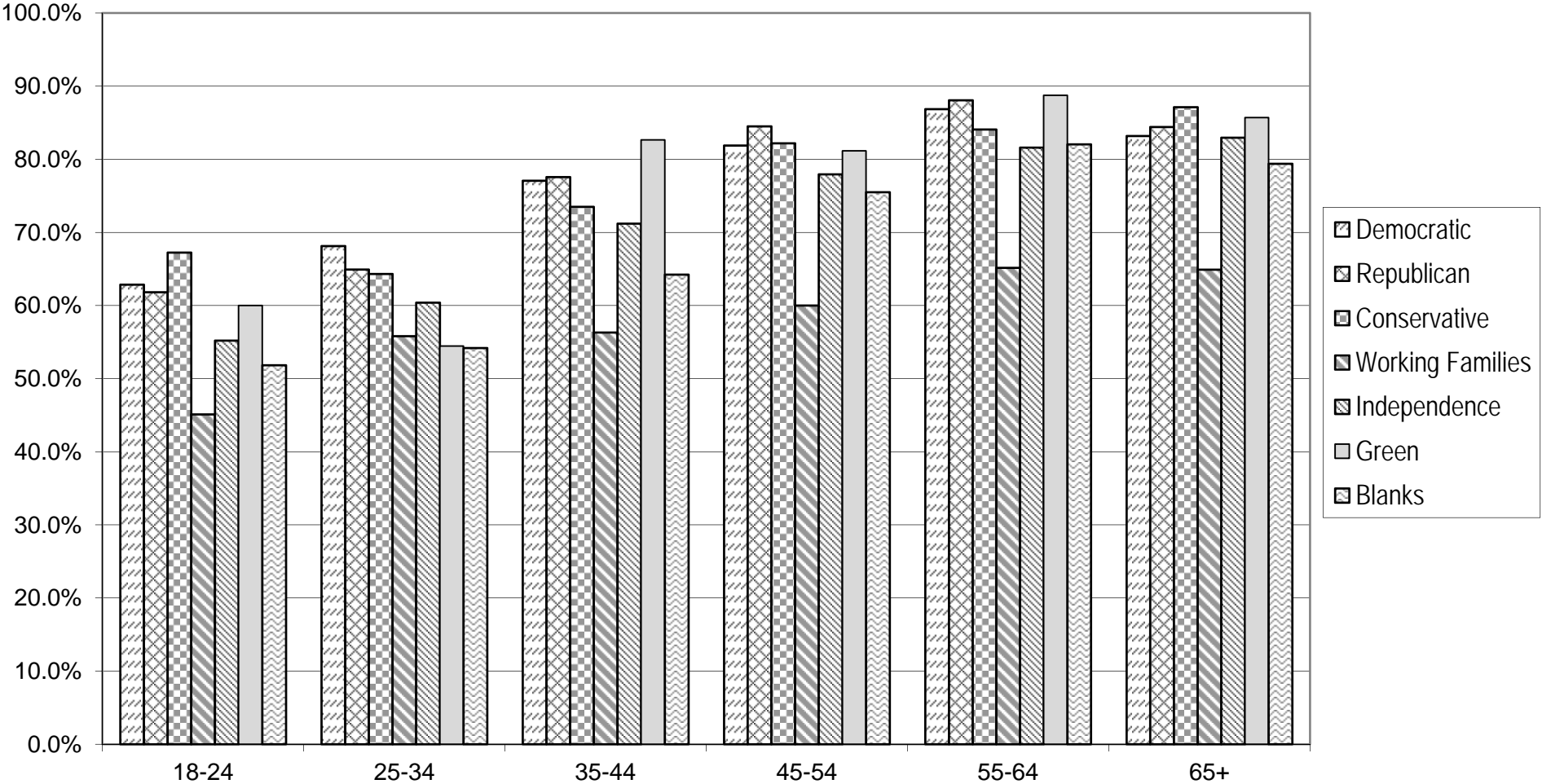
COMPARISON OF TOTAL AND GENDER TURNOUT 2012 GENERAL ELECTION



VOTER TURNOUT BY AGE GROUP 2012 GENERAL ELECTION



COMPARISON OF TURNOUT BY AGE GROUP 2012 GENERAL ELECTION



DEMOCRATIC SUMMARY

2012 GENERAL ELECTION
DEMOCRATIC TURNOUT BY GENDER

LT/LD SUMMARY

LEGISLATIVE DISTRICT OR TOWN	TOTAL VOTERS			MALES			FEMALES		
	VOTED	REGISTERED	TURNOUT	VOTED	REGISTERED	TURNOUT	VOTED	REGISTERED	TURNOUT
CITY									
Leg. Dist. 07	353	481	73.39%	128	180	71.11%	225	301	74.75%
Leg. Dist. 16	3	5	60.00%	1	2	50.00%	2	3	66.67%
Leg. Dist. 21	5,961	7,625	78.18%	2,178	2,973	73.26%	3,783	4,652	81.32%
Leg. Dist. 22	5,663	8,062	70.24%	2,061	3,272	62.99%	3,602	4,790	75.20%
Leg. Dist. 23	5,199	6,203	83.81%	2,256	2,718	83.00%	2,943	3,485	84.45%
Leg. Dist. 24	3,403	4,044	84.15%	1,404	1,703	82.44%	1,999	2,341	85.39%
Leg. Dist. 25	6,330	8,463	74.80%	2,410	3,503	68.80%	3,920	4,960	79.03%
Leg. Dist. 26	2,961	3,813	77.66%	1,000	1,365	73.26%	1,961	2,448	80.11%
Leg. Dist. 27	8,100	10,318	78.50%	2,941	4,033	72.92%	5,159	6,285	82.08%
Leg. Dist. 28	4,320	6,089	70.95%	1,535	2,354	65.21%	2,785	3,735	74.56%
Leg. Dist. 29	5,695	7,696	74.00%	2,029	2,974	68.22%	3,666	4,722	77.64%
CITY TOTAL:	47,988	62,799	76.42%	17,943	25,077	71.55%	30,045	37,722	79.65%
TOWNS									
Brighton	8,510	9,924	85.75%	3,234	3,861	83.76%	5,276	6,063	87.02%
Chili	4,681	5,966	78.46%	1,849	2,433	76.00%	2,832	3,533	80.16%
Clarkson	741	995	74.47%	292	397	73.55%	449	598	75.08%
East Rochester	918	1,266	72.51%	352	502	70.12%	566	764	74.08%
Gates	4,998	6,647	75.19%	1,883	2,573	73.18%	3,115	4,074	76.46%
Greece	14,438	19,225	75.10%	5,361	7,294	73.50%	9,077	11,931	76.08%
Hamlin	838	1,179	71.08%	320	462	69.26%	518	717	72.25%
Henrietta	6,215	7,941	78.26%	2,395	3,141	76.25%	3,820	4,800	79.58%
Irondequoit	10,519	13,165	79.90%	3,820	4,852	78.73%	6,699	8,313	80.58%
Mendon	1,388	1,754	79.13%	526	685	76.79%	862	1,069	80.64%
Ogden	2,514	3,246	77.45%	914	1,226	74.55%	1,600	2,020	79.21%
Parma	1,804	2,489	72.48%	677	965	70.16%	1,127	1,524	73.95%
Penfield	6,258	7,673	81.56%	2,318	2,904	79.82%	3,940	4,769	82.62%
Perinton	8,073	9,843	82.02%	2,961	3,678	80.51%	5,112	6,165	82.92%
Pittsford	5,245	6,249	83.93%	2,004	2,424	82.67%	3,241	3,825	84.73%
Riga	659	856	76.99%	246	333	73.87%	413	523	78.97%
Rush	566	693	81.67%	220	283	77.74%	346	410	84.39%
Sweden	1,451	1,880	77.18%	541	727	74.42%	910	1,153	78.92%
Webster	6,874	8,499	80.88%	2,589	3,222	80.35%	4,285	5,277	81.20%
Wheatland	739	945	78.20%	292	382	76.44%	447	563	79.40%
TOWNS TOTAL:	87,429	110,435	79.17%	32,794	42,344	77.45%	54,635	68,091	80.24%
GRAND TOTAL:	135,417	173,234	78.17%	50,737	67,421	75.25%	84,680	105,813	80.03%

2012 GENERAL ELECTION
DEMOCRATIC TURNOUT BY AGE

LT/LD SUMMARY
Part 1 of 2

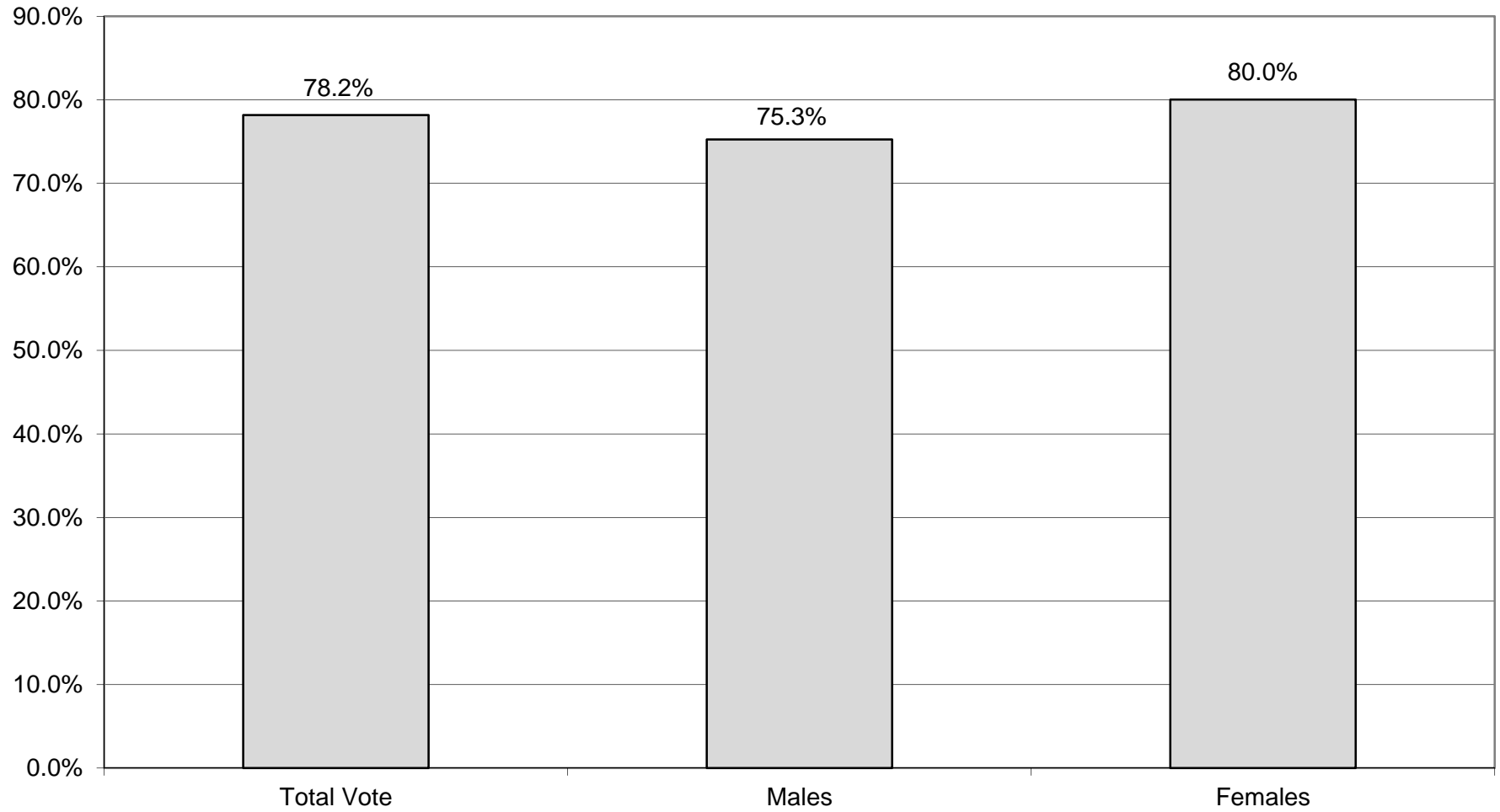
LEGISLATIVE DISTRICT OR TOWN CITY	NDOB			18-24			25-34			35-44		
	VOTED	REGISTERED	TURNOUT	VOTED	REGISTERED	TURNOUT	VOTED	REGISTERED	TURNOUT	VOTED	REGISTERED	TURNOUT
Leg. Dist. 07	1	5	20.00%	24	31	77.42%	35	56	62.50%	39	56	69.64%
Leg. Dist. 16	0	1	0.00%	0	0	0.00%	0	0	0.00%	0	0	0.00%
Leg. Dist. 21	35	47	74.47%	574	818	70.17%	1,161	1,571	73.90%	1,101	1,420	77.54%
Leg. Dist. 22	22	32	68.75%	656	995	65.93%	967	1,479	65.38%	868	1,340	64.78%
Leg. Dist. 23	31	38	81.58%	323	462	69.91%	1,204	1,542	78.08%	747	876	85.27%
Leg. Dist. 24	12	20	60.00%	219	293	74.74%	808	1,025	78.83%	575	651	88.33%
Leg. Dist. 25	38	51	74.51%	688	1,044	65.90%	1,191	1,654	72.01%	937	1,311	71.47%
Leg. Dist. 26	18	24	75.00%	214	348	61.49%	593	788	75.25%	501	662	75.68%
Leg. Dist. 27	31	47	65.96%	895	1,237	72.35%	1,271	1,791	70.97%	1,368	1,758	77.82%
Leg. Dist. 28	10	20	50.00%	479	744	64.38%	821	1,230	66.75%	865	1,157	74.76%
Leg. Dist. 29	24	36	66.67%	558	861	64.81%	941	1,353	69.55%	925	1,269	72.89%
CITY TOTAL:	222	321	69.16%	4,630	6,833	67.76%	8,992	12,489	72.00%	7,926	10,500	75.49%
TOWNS												
Brighton	54	63	85.71%	557	841	66.23%	942	1,337	70.46%	1,278	1,480	86.35%
Chili	57	72	79.17%	289	466	62.02%	648	986	65.72%	699	929	75.24%
Clarkson	1	3	33.33%	38	73	52.05%	83	140	59.29%	120	173	69.36%
East Rochester	20	26	76.92%	62	111	55.86%	149	232	64.22%	161	230	70.00%
Gates	16	28	57.14%	279	457	61.05%	643	1,047	61.41%	723	997	72.52%
Greece	130	193	67.36%	944	1,711	55.17%	2,003	3,133	63.93%	1,946	2,748	70.82%
Hamlin	0	5	0.00%	56	109	51.38%	109	200	54.50%	114	174	65.52%
Henrietta	13	22	59.09%	536	805	66.58%	859	1,287	66.74%	976	1,264	77.22%
Irondequoit	98	146	67.12%	631	1,036	60.91%	1,442	1,999	72.14%	1,589	1,979	80.29%
Mendon	1	2	50.00%	118	245	48.16%	91	195	46.67%	202	248	81.45%
Ogden	19	27	70.37%	153	252	60.71%	303	478	63.39%	373	503	74.16%
Parma	7	12	58.33%	129	252	51.19%	187	367	50.95%	238	341	69.79%
Penfield	38	63	60.32%	330	571	57.79%	663	981	67.58%	949	1,136	83.54%
Perinton	17	27	62.96%	577	1,056	54.64%	838	1,285	65.21%	1,285	1,511	85.04%
Pittsford	20	26	76.92%	365	596	61.24%	412	675	61.04%	766	893	85.78%
Riga	1	3	33.33%	47	72	65.28%	66	123	53.66%	87	124	70.16%
Rush	11	13	84.62%	49	82	59.76%	47	82	57.32%	62	71	87.32%
Sweden	7	10	70.00%	159	235	67.66%	171	288	59.38%	205	279	73.48%
Webster	63	89	70.79%	357	579	61.66%	706	1,077	65.55%	1,036	1,312	78.96%
Wheatland	3	5	60.00%	55	100	55.00%	91	141	64.54%	94	131	71.76%
TOWNS TOTAL:	576	835	68.98%	5,731	9,649	59.39%	10,453	16,053	65.12%	12,903	16,523	78.09%
GRAND TOTAL:	798	1,156	69.03%	10,361	16,482	62.86%	19,445	28,542	68.13%	20,829	27,023	77.08%

2012 GENERAL ELECTION
DEMOCRATIC TURNOUT BY AGE

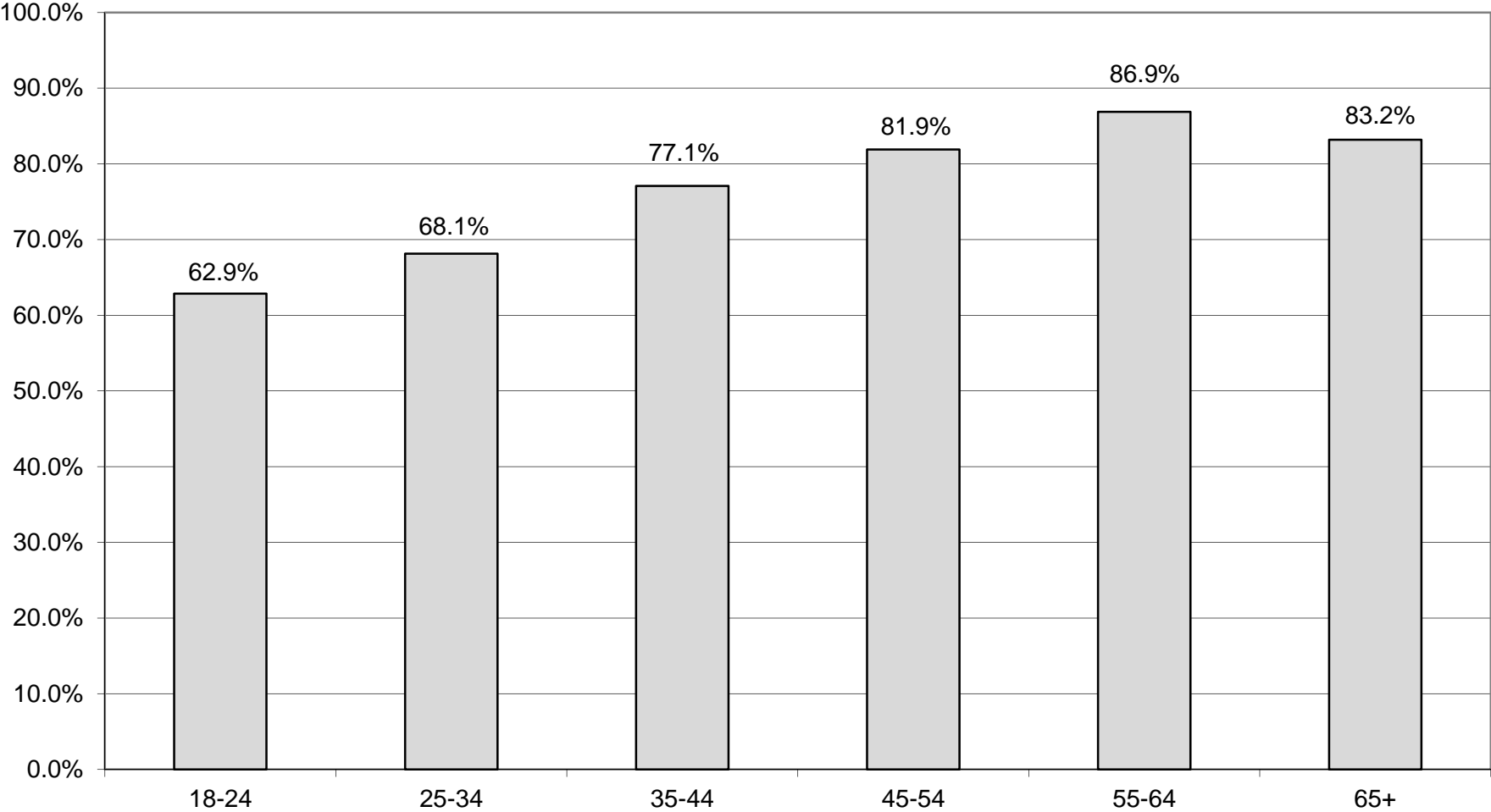
LT/LD SUMMARY
Part 2 of 2

LEGISLATIVE DISTRICT OR TOWN	45-54			55-64			65+		
	VOTED	REGISTERED	TURNOUT	VOTED	REGISTERED	TURNOUT	VOTED	REGISTERED	TURNOUT
CITY									
Leg. Dist. 07	45	70	64.29%	110	127	86.61%	99	136	72.79%
Leg. Dist. 16	0	0	0.00%	1	2	50.00%	2	2	100.00%
Leg. Dist. 21	1,192	1,472	80.98%	1,076	1,265	85.06%	822	1,032	79.65%
Leg. Dist. 22	1,188	1,641	72.39%	1,043	1,330	78.42%	919	1,245	73.82%
Leg. Dist. 23	873	1,006	86.78%	1,040	1,161	89.58%	981	1,118	87.75%
Leg. Dist. 24	589	690	85.36%	682	769	88.69%	518	596	86.91%
Leg. Dist. 25	1,213	1,592	76.19%	1,093	1,333	82.00%	1,170	1,478	79.16%
Leg. Dist. 26	615	750	82.00%	539	657	82.04%	481	584	82.36%
Leg. Dist. 27	1,769	2,134	82.90%	1,433	1,678	85.40%	1,333	1,673	79.68%
Leg. Dist. 28	906	1,254	72.25%	745	988	75.40%	494	696	70.98%
Leg. Dist. 29	1,190	1,537	77.42%	1,059	1,332	79.50%	998	1,308	76.30%
CITY TOTAL:	9,580	12,146	78.87%	8,821	10,642	82.89%	7,817	9,868	79.22%
TOWNS									
Brighton	1,553	1,692	91.78%	1,849	1,978	93.48%	2,277	2,533	89.89%
Chili	873	1,060	82.36%	1,013	1,142	88.70%	1,102	1,311	84.06%
Clarkson	154	195	78.97%	173	200	86.50%	172	211	81.52%
East Rochester	161	218	73.85%	195	231	84.42%	170	218	77.98%
Gates	896	1,139	78.67%	954	1,126	84.72%	1,487	1,853	80.25%
Greece	2,596	3,288	78.95%	3,210	3,737	85.90%	3,609	4,415	81.74%
Hamlin	177	241	73.44%	202	231	87.45%	180	219	82.19%
Henrietta	1,105	1,383	79.90%	1,226	1,395	87.89%	1,500	1,785	84.03%
Irondequoit	1,961	2,334	84.02%	2,253	2,559	88.04%	2,545	3,112	81.78%
Mendon	384	426	90.14%	324	349	92.84%	268	289	92.73%
Ogden	497	624	79.65%	588	663	88.69%	581	699	83.12%
Parma	368	468	78.63%	445	520	85.58%	430	529	81.29%
Penfield	1,229	1,416	86.79%	1,416	1,578	89.73%	1,633	1,928	84.70%
Perinton	1,588	1,810	87.73%	1,766	1,930	91.50%	2,002	2,224	90.02%
Pittsford	1,100	1,211	90.83%	1,228	1,335	91.99%	1,354	1,513	89.49%
Riga	155	191	81.15%	164	182	90.11%	139	161	86.34%
Rush	121	137	88.32%	149	163	91.41%	127	145	87.59%
Sweden	239	297	80.47%	333	377	88.33%	337	394	85.53%
Webster	1,358	1,593	85.25%	1,499	1,672	89.65%	1,855	2,177	85.21%
Wheatland	143	170	84.12%	152	176	86.36%	201	222	90.54%
TOWNS TOTAL:	16,658	19,893	83.74%	19,139	21,544	88.84%	21,969	25,938	84.70%
GRAND TOTAL:	26,238	32,039	81.89%	27,960	32,186	86.87%	29,786	35,806	83.19%

DEMOCRATIC TURNOUT - TOTAL AND GENDER 2012 GENERAL ELECTION



DEMOCRATIC TURNOUT BY AGE GROUP 2012 GENERAL ELECTION



REPUBLICAN SUMMARY

2012 GENERAL ELECTION
REPUBLICAN TURNOUT BY GENDER

LT/LD SUMMARY

LEGISLATIVE DISTRICT OR TOWN	TOTAL VOTERS			MALES			FEMALES		
	VOTED	REGISTERED	TURNOUT	VOTED	REGISTERED	TURNOUT	VOTED	REGISTERED	TURNOUT
CITY									
Leg. Dist. 07	248	325	76.31%	119	151	78.81%	129	174	74.14%
Leg. Dist. 16	4	5	80.00%	3	3	100.00%	1	2	50.00%
Leg. Dist. 21	1,074	1,473	72.91%	536	726	73.83%	538	747	72.02%
Leg. Dist. 22	382	654	58.41%	182	330	55.15%	200	324	61.73%
Leg. Dist. 23	1,728	2,184	79.12%	971	1,217	79.79%	757	967	78.28%
Leg. Dist. 24	846	1,101	76.84%	433	558	77.60%	413	543	76.06%
Leg. Dist. 25	554	871	63.61%	282	471	59.87%	272	400	68.00%
Leg. Dist. 26	1,306	1,733	75.36%	646	850	76.00%	660	883	74.75%
Leg. Dist. 27	809	1,119	72.30%	398	562	70.82%	411	557	73.79%
Leg. Dist. 28	722	1,147	62.95%	369	583	63.29%	353	564	62.59%
Leg. Dist. 29	862	1,271	67.82%	428	633	67.61%	434	638	68.03%
CITY TOTAL:	8,535	11,883	71.83%	4,367	6,084	71.78%	4,168	5,799	71.87%
TOWNS									
Brighton	4,583	5,533	82.83%	2,274	2,732	83.24%	2,309	2,801	82.43%
Chili	5,603	6,957	80.54%	2,792	3,449	80.95%	2,811	3,508	80.13%
Clarkson	1,343	1,680	79.94%	680	855	79.53%	663	825	80.36%
East Rochester	851	1,117	76.19%	409	537	76.16%	442	580	76.21%
Gates	4,323	5,622	76.89%	2,092	2,743	76.27%	2,231	2,879	77.49%
Greece	17,310	21,979	78.76%	8,693	11,025	78.85%	8,617	10,954	78.67%
Hamlin	1,855	2,323	79.85%	975	1,210	80.58%	880	1,113	79.07%
Henrietta	5,768	7,151	80.66%	2,950	3,644	80.95%	2,818	3,507	80.35%
Irondequoit	7,921	9,966	79.48%	3,931	4,911	80.04%	3,990	5,055	78.93%
Mendon	2,299	2,695	85.31%	1,232	1,445	85.26%	1,067	1,250	85.36%
Ogden	4,262	5,145	82.84%	2,128	2,580	82.48%	2,134	2,565	83.20%
Parma	3,396	4,245	80.00%	1,737	2,189	79.35%	1,659	2,056	80.69%
Penfield	7,748	9,222	84.02%	3,960	4,728	83.76%	3,788	4,494	84.29%
Perinton	10,849	12,755	85.06%	5,480	6,492	84.41%	5,369	6,263	85.73%
Pittsford	6,390	7,508	85.11%	3,253	3,841	84.69%	3,137	3,667	85.55%
Riga	1,416	1,755	80.68%	699	876	79.79%	717	879	81.57%
Rush	891	1,040	85.67%	458	536	85.45%	433	504	85.91%
Sweden	1,907	2,354	81.01%	974	1,198	81.30%	933	1,156	80.71%
Webster	8,633	10,285	83.94%	4,410	5,211	84.63%	4,223	5,074	83.23%
Wheatland	1,016	1,241	81.87%	514	614	83.71%	502	627	80.06%
TOWNS TOTAL:	98,364	120,573	81.58%	49,641	60,816	81.62%	48,723	59,757	81.54%
GRAND TOTAL:	106,899	132,456	80.71%	54,008	66,900	80.73%	52,891	65,556	80.68%

2012 GENERAL ELECTION
 REPUBLICAN TURNOUT BY AGE

LT/LD SUMMARY
 Part 1 of 2

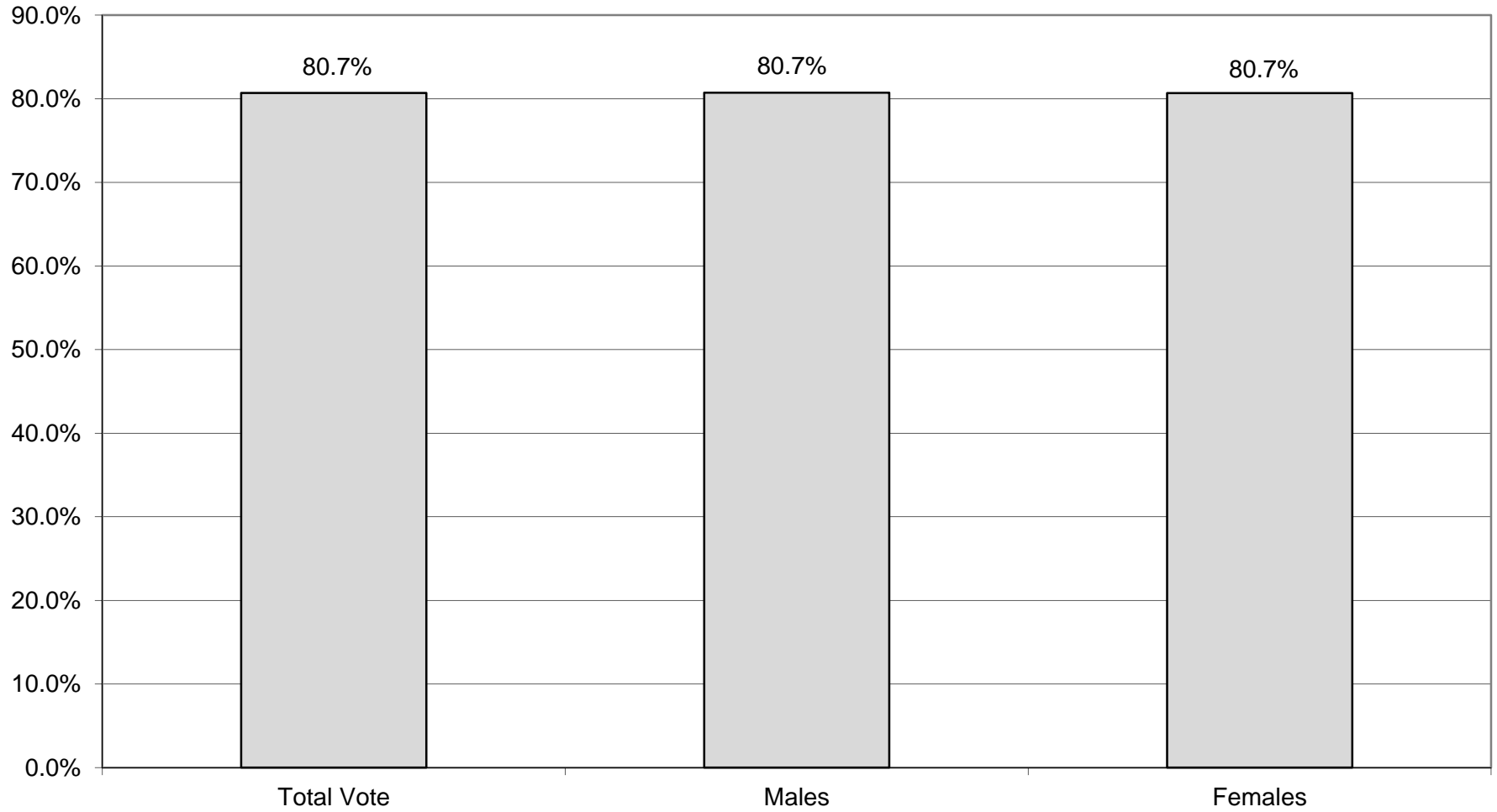
LEGISLATIVE DISTRICT OR TOWN	NDOB			18-24			25-34			35-44		
	VOTED	REGISTERED	TURNOUT	VOTED	REGISTERED	TURNOUT	VOTED	REGISTERED	TURNOUT	VOTED	REGISTERED	TURNOUT
CITY												
Leg. Dist. 07	6	11	54.55%	5	8	62.50%	18	33	54.55%	19	26	73.08%
Leg. Dist. 16	0	0	0.00%	0	0	0.00%	0	0	0.00%	0	0	0.00%
Leg. Dist. 21	35	65	53.85%	48	65	73.85%	180	253	71.15%	144	217	66.36%
Leg. Dist. 22	5	11	45.45%	21	41	51.22%	43	89	48.31%	50	107	46.73%
Leg. Dist. 23	39	57	68.42%	78	121	64.46%	378	523	72.28%	258	325	79.38%
Leg. Dist. 24	20	32	62.50%	26	38	68.42%	175	215	81.40%	88	124	70.97%
Leg. Dist. 25	13	30	43.33%	41	74	55.41%	102	164	62.20%	73	114	64.04%
Leg. Dist. 26	31	56	55.36%	35	67	52.24%	128	206	62.14%	181	256	70.70%
Leg. Dist. 27	21	29	72.41%	42	67	62.69%	116	176	65.91%	96	148	64.86%
Leg. Dist. 28	29	39	74.36%	26	53	49.06%	66	143	46.15%	94	165	56.97%
Leg. Dist. 29	29	52	55.77%	27	50	54.00%	81	148	54.73%	109	182	59.89%
CITY TOTAL:	228	382	59.69%	349	584	59.76%	1,287	1,950	66.00%	1,112	1,664	66.83%
TOWNS												
Brighton	117	174	67.24%	191	294	64.97%	402	551	72.96%	555	677	81.98%
Chili	105	147	71.43%	300	452	66.37%	491	726	67.63%	725	964	75.21%
Clarkson	3	3	100.00%	66	106	62.26%	99	165	60.00%	209	265	78.87%
East Rochester	31	43	72.09%	33	56	58.93%	89	126	70.63%	88	147	59.86%
Gates	37	65	56.92%	143	221	64.71%	362	591	61.25%	513	700	73.29%
Greece	333	527	63.19%	760	1,221	62.24%	1,381	2,192	63.00%	1,971	2,721	72.44%
Hamlin	9	15	60.00%	78	138	56.52%	135	222	60.81%	244	323	75.54%
Henrietta	25	41	60.98%	243	381	63.78%	504	756	66.67%	772	994	77.67%
Irondequoit	205	300	68.33%	246	412	59.71%	675	1,039	64.97%	946	1,219	77.60%
Mendon	7	11	63.64%	119	201	59.20%	111	188	59.04%	298	343	86.88%
Ogden	48	59	81.36%	241	352	68.47%	368	548	67.15%	604	738	81.84%
Parma	13	37	35.14%	167	273	61.17%	229	378	60.58%	458	574	79.79%
Penfield	120	160	75.00%	323	515	62.72%	534	775	68.90%	1,058	1,266	83.57%
Perinton	26	50	52.00%	433	804	53.86%	641	958	66.91%	1,343	1,635	82.14%
Pittsford	49	68	72.06%	266	439	60.59%	276	482	57.26%	797	935	85.24%
Riga	4	10	40.00%	78	112	69.64%	93	167	55.69%	159	212	75.00%
Rush	34	42	80.95%	34	57	59.65%	46	70	65.71%	90	111	81.08%
Sweden	17	28	60.71%	117	160	73.13%	154	252	61.11%	224	292	76.71%
Webster	110	154	71.43%	342	539	63.45%	583	893	65.29%	1,221	1,486	82.17%
Wheatland	7	9	77.78%	45	81	55.56%	90	141	63.83%	129	155	83.23%
TOWNS TOTAL:	1,300	1,943	66.91%	4,225	6,814	62.00%	7,263	11,220	64.73%	12,404	15,757	78.72%
GRAND TOTAL:	1,528	2,325	65.72%	4,574	7,398	61.83%	8,550	13,170	64.92%	13,516	17,421	77.58%

2012 GENERAL ELECTION
REPUBLICAN TURNOUT BY AGE

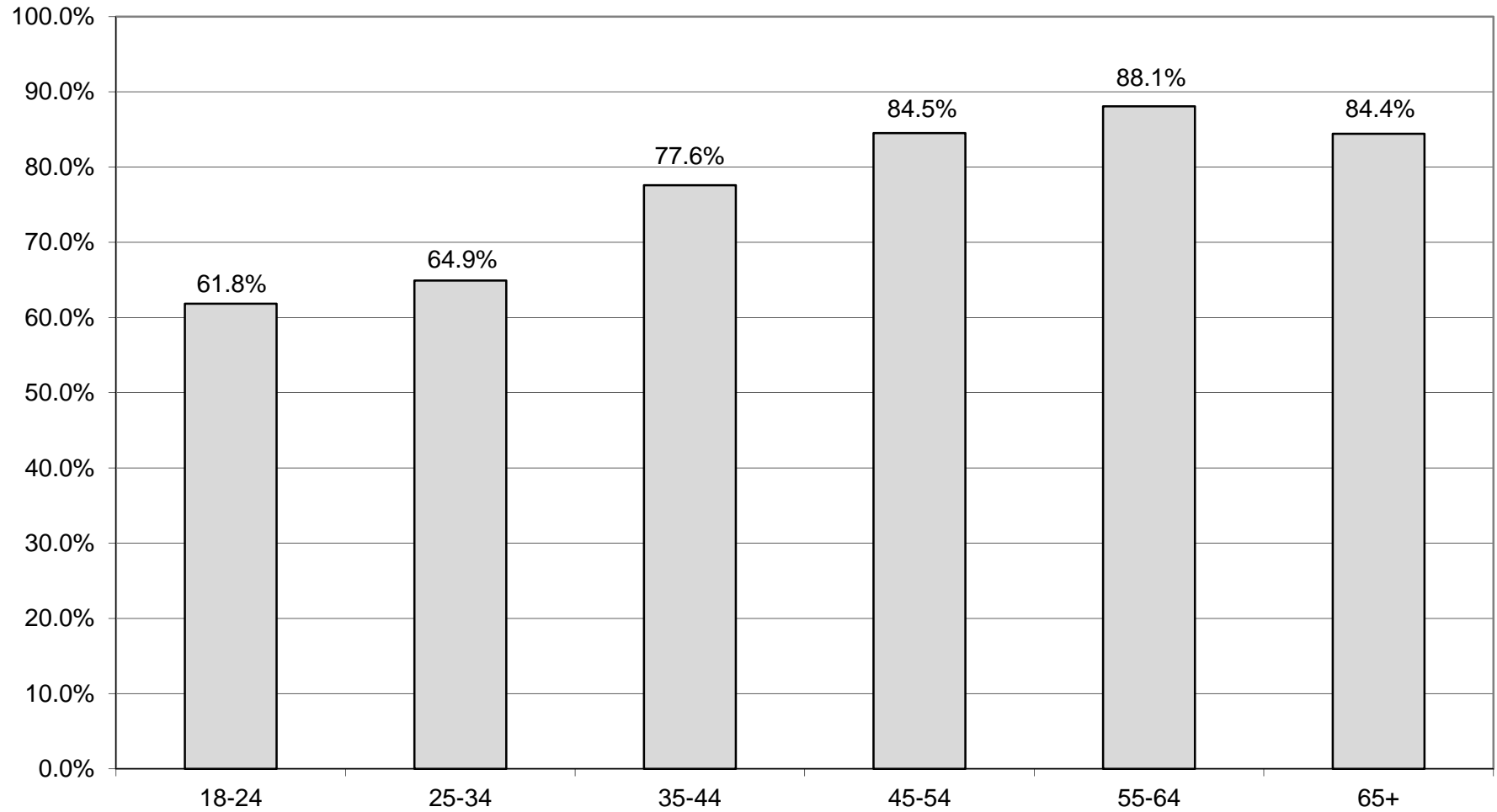
LT/LD SUMMARY
Part 2 of 2

LEGISLATIVE DISTRICT OR TOWN	45-54			55-64			65+		
	VOTED	REGISTERED	TURNOUT	VOTED	REGISTERED	TURNOUT	VOTED	REGISTERED	TURNOUT
CITY									
Leg. Dist. 07	49	62	79.03%	67	77	87.01%	84	108	77.78%
Leg. Dist. 16	0	0	0.00%	3	4	75.00%	1	1	100.00%
Leg. Dist. 21	199	285	69.82%	215	268	80.22%	253	320	79.06%
Leg. Dist. 22	86	146	58.90%	93	127	73.23%	84	133	63.16%
Leg. Dist. 23	302	375	80.53%	311	358	86.87%	362	425	85.18%
Leg. Dist. 24	140	185	75.68%	158	191	82.72%	239	316	75.63%
Leg. Dist. 25	81	141	57.45%	110	157	70.06%	134	191	70.16%
Leg. Dist. 26	269	352	76.42%	292	341	85.63%	370	455	81.32%
Leg. Dist. 27	160	213	75.12%	172	218	78.90%	202	268	75.37%
Leg. Dist. 28	141	230	61.30%	189	264	71.59%	177	253	69.96%
Leg. Dist. 29	165	241	68.46%	208	267	77.90%	243	331	73.41%
CITY TOTAL:	1,592	2,230	71.39%	1,818	2,272	80.02%	2,149	2,801	76.72%
TOWNS									
Brighton	817	941	86.82%	830	942	88.11%	1,671	1,954	85.52%
Chili	1,340	1,579	84.86%	1,085	1,232	88.07%	1,557	1,857	83.84%
Clarkson	335	389	86.12%	282	319	88.40%	349	433	80.60%
East Rochester	205	247	83.00%	181	217	83.41%	224	281	79.72%
Gates	845	1,077	78.46%	857	1,017	84.27%	1,566	1,951	80.27%
Greece	3,574	4,309	82.94%	3,627	4,170	86.98%	5,664	6,839	82.82%
Hamlin	447	538	83.09%	470	520	90.38%	472	567	83.25%
Henrietta	1,273	1,518	83.86%	1,203	1,388	86.67%	1,748	2,073	84.32%
Irondequoit	1,664	1,955	85.12%	1,584	1,798	88.10%	2,601	3,243	80.20%
Mendon	674	742	90.84%	518	569	91.04%	572	641	89.24%
Ogden	1,056	1,222	86.42%	895	1,009	88.70%	1,050	1,217	86.28%
Parma	757	931	81.31%	753	861	87.46%	1,019	1,191	85.56%
Penfield	1,907	2,179	87.52%	1,541	1,698	90.75%	2,265	2,629	86.15%
Perinton	2,637	2,957	89.18%	2,267	2,462	92.08%	3,502	3,889	90.05%
Pittsford	1,521	1,720	88.43%	1,258	1,377	91.36%	2,223	2,487	89.38%
Riga	357	434	82.26%	337	380	88.68%	388	440	88.18%
Rush	218	250	87.20%	212	230	92.17%	257	280	91.79%
Sweden	425	497	85.51%	432	489	88.34%	538	636	84.59%
Webster	2,152	2,444	88.05%	1,694	1,857	91.22%	2,531	2,912	86.92%
Wheatland	221	259	85.33%	240	265	90.57%	284	331	85.80%
TOWNS TOTAL:	22,425	26,188	85.63%	20,266	22,800	88.89%	30,481	35,851	85.02%
GRAND TOTAL:	24,017	28,418	84.51%	22,084	25,072	88.08%	32,630	38,652	84.42%

REPUBLICAN TURNOUT - TOTAL AND GENDER 2012 GENERAL ELECTION



REPUBLICAN TURNOUT BY AGE GROUP 2012 GENERAL ELECTION



CONSERVATIVE SUMMARY

2012 GENERAL ELECTION
CONSERVATIVE TURNOUT BY GENDER

LT/LD SUMMARY

LEGISLATIVE DISTRICT OR TOWN	TOTAL VOTERS			MALES			FEMALES		
	VOTED	REGISTERED	TURNOUT	VOTED	REGISTERED	TURNOUT	VOTED	REGISTERED	TURNOUT
CITY									
Leg. Dist. 07	17	22	77.27%	12	13	92.31%	5	9	55.56%
Leg. Dist. 16	0	0	0.00%	0	0	0.00%	0	0	0.00%
Leg. Dist. 21	72	92	78.26%	44	56	78.57%	28	36	77.78%
Leg. Dist. 22	37	54	68.52%	22	29	75.86%	15	25	60.00%
Leg. Dist. 23	88	114	77.19%	52	69	75.36%	36	45	80.00%
Leg. Dist. 24	41	52	78.85%	25	32	78.13%	16	20	80.00%
Leg. Dist. 25	35	54	64.81%	17	29	58.62%	18	25	72.00%
Leg. Dist. 26	135	165	81.82%	70	87	80.46%	65	78	83.33%
Leg. Dist. 27	73	102	71.57%	42	62	67.74%	31	40	77.50%
Leg. Dist. 28	60	96	62.50%	31	49	63.27%	29	47	61.70%
Leg. Dist. 29	71	118	60.17%	39	66	59.09%	32	52	61.54%
CITY TOTAL:	629	869	72.38%	354	492	71.95%	275	377	72.94%
TOWNS									
Brighton	170	208	81.73%	100	122	81.97%	70	86	81.40%
Chili	358	440	81.36%	211	256	82.42%	147	184	79.89%
Clarkson	104	121	85.95%	63	75	84.00%	41	46	89.13%
East Rochester	60	81	74.07%	29	44	65.91%	31	37	83.78%
Gates	315	391	80.56%	181	212	85.38%	134	179	74.86%
Greece	1,245	1,584	78.60%	667	839	79.50%	578	745	77.58%
Hamlin	113	142	79.58%	73	89	82.02%	40	53	75.47%
Henrietta	355	458	77.51%	201	264	76.14%	154	194	79.38%
Irondequoit	538	683	78.77%	309	396	78.03%	229	287	79.79%
Mendon	90	117	76.92%	59	78	75.64%	31	39	79.49%
Ogden	304	371	81.94%	163	194	84.02%	141	177	79.66%
Parma	222	270	82.22%	129	153	84.31%	93	117	79.49%
Penfield	362	424	85.38%	206	242	85.12%	156	182	85.71%
Perinton	398	477	83.44%	236	286	82.52%	162	191	84.82%
Pittsford	181	215	84.19%	109	130	83.85%	72	85	84.71%
Riga	90	102	88.24%	48	55	87.27%	42	47	89.36%
Rush	47	56	83.93%	27	31	87.10%	20	25	80.00%
Sweden	109	132	82.58%	61	72	84.72%	48	60	80.00%
Webster	522	610	85.57%	301	349	86.25%	221	261	84.67%
Wheatland	74	89	83.15%	50	57	87.72%	24	32	75.00%
TOWNS TOTAL:	5,657	6,971	81.15%	3,223	3,944	81.72%	2,434	3,027	80.41%
GRAND TOTAL:	6,286	7,840	80.18%	3,577	4,436	80.64%	2,709	3,404	79.58%

2012 GENERAL ELECTION
CONSERVATIVE TURNOUT BY AGE

LT/LD SUMMARY
Part 1 of 2

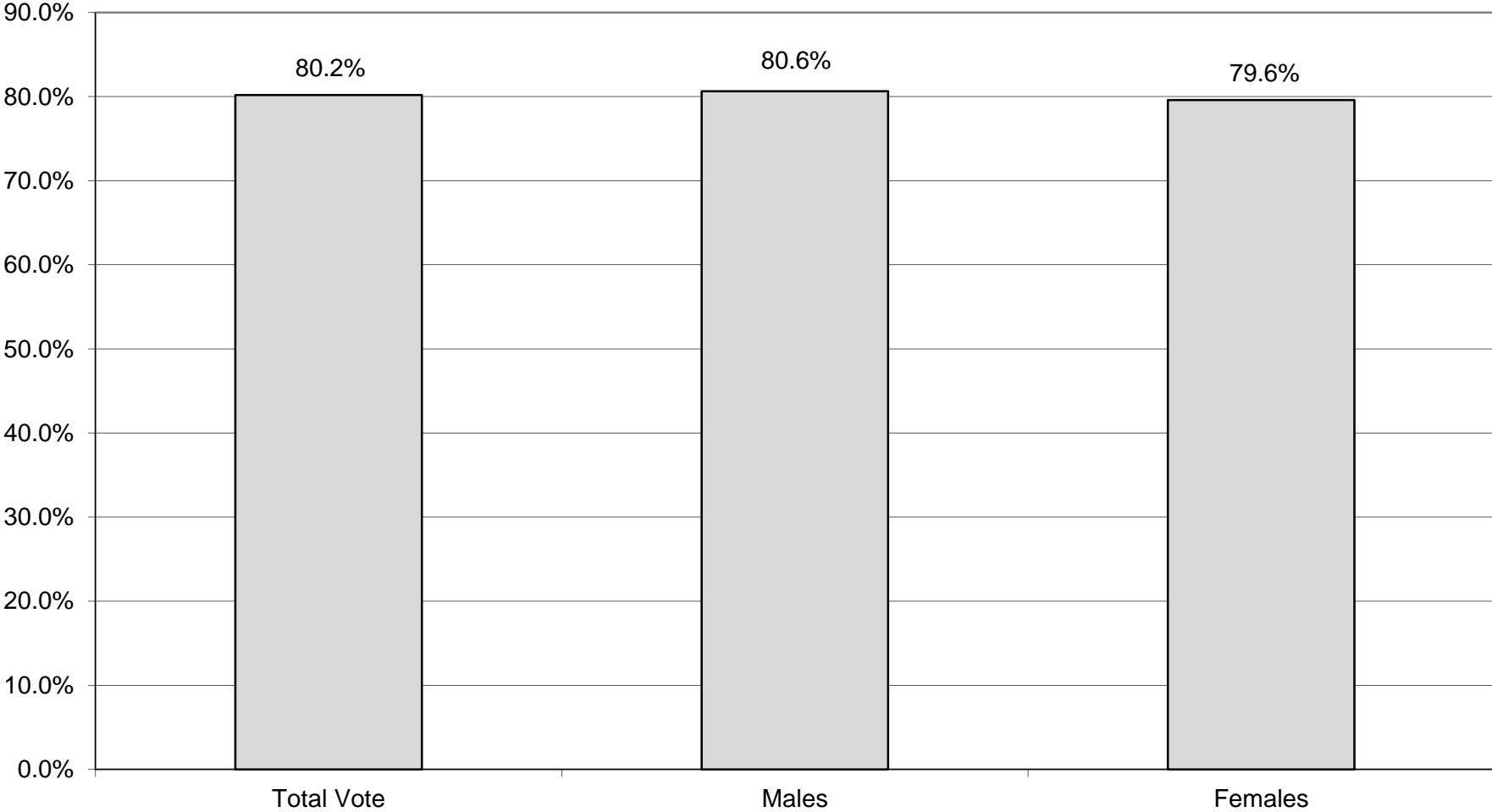
LEGISLATIVE DISTRICT OR TOWN CITY	NDOB			18-24			25-34			35-44		
	VOTED	REGISTERED	TURNOUT	VOTED	REGISTERED	TURNOUT	VOTED	REGISTERED	TURNOUT	VOTED	REGISTERED	TURNOUT
Leg. Dist. 07	0	0	0.00%	2	2	100.00%	2	2	100.00%	0	2	0.00%
Leg. Dist. 16	0	0	0.00%	0	0	0.00%	0	0	0.00%	0	0	0.00%
Leg. Dist. 21	2	2	100.00%	2	4	50.00%	10	15	66.67%	14	15	93.33%
Leg. Dist. 22	0	0	0.00%	1	3	33.33%	3	5	60.00%	3	10	30.00%
Leg. Dist. 23	0	0	0.00%	6	9	66.67%	17	21	80.95%	10	13	76.92%
Leg. Dist. 24	1	1	100.00%	2	4	50.00%	6	8	75.00%	7	8	87.50%
Leg. Dist. 25	0	1	0.00%	3	5	60.00%	4	7	57.14%	4	8	50.00%
Leg. Dist. 26	0	0	0.00%	10	12	83.33%	10	12	83.33%	11	15	73.33%
Leg. Dist. 27	0	0	0.00%	5	9	55.56%	7	11	63.64%	5	8	62.50%
Leg. Dist. 28	0	0	0.00%	2	5	40.00%	1	7	14.29%	2	9	22.22%
Leg. Dist. 29	0	0	0.00%	4	8	50.00%	5	11	45.45%	9	20	45.00%
CITY TOTAL:	3	4	75.00%	37	61	60.66%	65	99	65.66%	65	108	60.19%
TOWNS												
Brighton	0	0	0.00%	11	17	64.71%	15	23	65.22%	24	27	88.89%
Chili	2	2	100.00%	19	23	82.61%	30	45	66.67%	48	64	75.00%
Clarkson	0	0	0.00%	4	7	57.14%	9	8	112.50%	25	29	86.21%
East Rochester	0	0	0.00%	2	3	66.67%	8	13	61.54%	6	6	100.00%
Gates	0	0	0.00%	12	15	80.00%	26	37	70.27%	36	49	73.47%
Greece	8	9	88.89%	45	67	67.16%	86	161	53.42%	123	183	67.21%
Hamlin	0	0	0.00%	8	9	88.89%	10	16	62.50%	7	13	53.85%
Henrietta	1	1	100.00%	11	18	61.11%	31	45	68.89%	42	67	62.69%
Irondequoit	5	5	100.00%	19	32	59.38%	45	70	64.29%	75	96	78.13%
Mendon	0	0	0.00%	9	20	45.00%	6	6	100.00%	16	18	88.89%
Ogden	0	0	0.00%	21	30	70.00%	21	32	65.63%	37	48	77.08%
Parma	0	0	0.00%	10	18	55.56%	19	25	76.00%	33	44	75.00%
Penfield	1	2	50.00%	17	21	80.95%	22	32	68.75%	37	48	77.08%
Perinton	0	0	0.00%	10	19	52.63%	19	29	65.52%	41	55	74.55%
Pittsford	1	1	100.00%	14	19	73.68%	3	8	37.50%	24	29	82.76%
Riga	0	0	0.00%	10	11	90.91%	11	15	73.33%	10	10	100.00%
Rush	0	0	0.00%	1	2	50.00%	2	3	66.67%	3	5	60.00%
Sweden	0	0	0.00%	9	12	75.00%	12	18	66.67%	14	16	87.50%
Webster	3	3	100.00%	36	51	70.59%	26	38	68.42%	73	90	81.11%
Wheatland	0	0	0.00%	3	3	100.00%	3	6	50.00%	7	10	70.00%
TOWNS TOTAL:	21	23	91.30%	271	397	68.26%	404	630	64.13%	681	907	75.08%
GRAND TOTAL:	24	27	88.89%	308	458	67.25%	469	729	64.33%	746	1,015	73.50%

2012 GENERAL ELECTION
CONSERVATIVE TURNOUT BY AGE

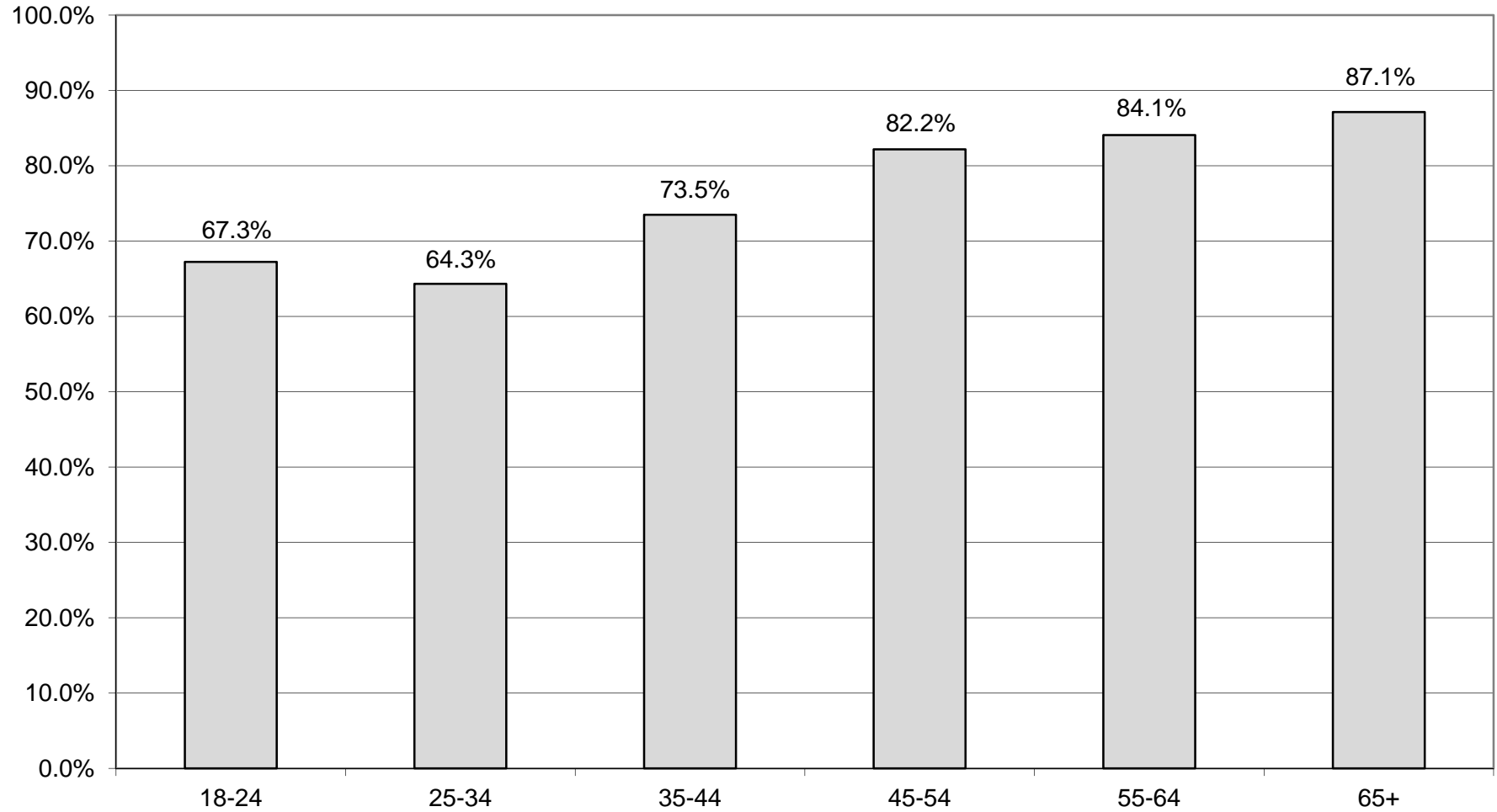
LT/LD SUMMARY
Part 2 of 2

LEGISLATIVE DISTRICT OR TOWN	45-54			55-64			65+		
	VOTED	REGISTERED	TURNOUT	VOTED	REGISTERED	TURNOUT	VOTED	REGISTERED	TURNOUT
CITY									
Leg. Dist. 07	2	4	50.00%	7	7	100.00%	4	5	80.00%
Leg. Dist. 16	0	0	0.00%	0	0	0.00%	0	0	0.00%
Leg. Dist. 21	14	17	82.35%	19	25	76.00%	11	14	78.57%
Leg. Dist. 22	7	10	70.00%	14	16	87.50%	9	10	90.00%
Leg. Dist. 23	21	25	84.00%	18	25	72.00%	16	21	76.19%
Leg. Dist. 24	9	10	90.00%	9	11	81.82%	7	10	70.00%
Leg. Dist. 25	9	11	81.82%	9	14	64.29%	6	8	75.00%
Leg. Dist. 26	34	43	79.07%	37	45	82.22%	33	38	86.84%
Leg. Dist. 27	12	17	70.59%	23	31	74.19%	21	26	80.77%
Leg. Dist. 28	19	26	73.08%	19	27	70.37%	17	22	77.27%
Leg. Dist. 29	12	20	60.00%	23	33	69.70%	18	26	69.23%
CITY TOTAL:	139	183	75.96%	178	234	76.07%	142	180	78.89%
TOWNS									
Brighton	41	47	87.23%	34	42	80.95%	45	52	86.54%
Chili	75	93	80.65%	82	97	84.54%	102	116	87.93%
Clarkson	27	33	81.82%	22	27	81.48%	17	17	100.00%
East Rochester	21	25	84.00%	19	28	67.86%	4	6	66.67%
Gates	90	103	87.38%	71	92	77.17%	80	95	84.21%
Greece	305	384	79.43%	359	421	85.27%	319	359	88.86%
Hamlin	43	46	93.48%	31	40	77.50%	14	18	77.78%
Henrietta	82	108	75.93%	88	103	85.44%	100	116	86.21%
Irondequoit	102	133	76.69%	161	186	86.56%	131	161	81.37%
Mendon	21	25	84.00%	20	26	76.92%	18	22	81.82%
Ogden	83	99	83.84%	75	89	84.27%	67	73	91.78%
Parma	57	68	83.82%	56	67	83.58%	47	48	97.92%
Penfield	88	98	89.80%	97	112	86.61%	100	111	90.09%
Perinton	89	99	89.90%	87	106	82.08%	152	169	89.94%
Pittsford	41	45	91.11%	36	40	90.00%	62	73	84.93%
Riga	26	28	92.86%	20	23	86.96%	13	15	86.67%
Rush	12	16	75.00%	13	13	100.00%	16	17	94.12%
Sweden	33	39	84.62%	22	26	84.62%	19	21	90.48%
Webster	118	143	82.52%	138	144	95.83%	128	141	90.78%
Wheatland	16	21	76.19%	30	33	90.91%	15	16	93.75%
TOWNS TOTAL:	1,370	1,653	82.88%	1,461	1,715	85.19%	1,449	1,646	88.03%
GRAND TOTAL:	1,509	1,836	82.19%	1,639	1,949	84.09%	1,591	1,826	87.13%

CONSERVATIVE TURNOUT - TOTAL AND GENDER 2012 GENERAL ELECTION



CONSERVATIVE TURNOUT BY AGE GROUP 2012 GENERAL ELECTION



WORKING FAMILIES SUMMARY

2012 GENERAL ELECTION
WORKING FAMILIES TURNOUT BY GENDER

LT/LD SUMMARY

LEGISLATIVE DISTRICT OR TOWN	TOTAL VOTERS			MALES			FEMALES		
	VOTED	REGISTERED	TURNOUT	VOTED	REGISTERED	TURNOUT	VOTED	REGISTERED	TURNOUT
CITY									
Leg. Dist. 07	4	6	66.67%	0	1	0.00%	4	5	80.00%
Leg. Dist. 16	0	0	0.00%	0	0	0.00%	0	0	0.00%
Leg. Dist. 21	40	66	60.61%	18	25	72.00%	22	41	53.66%
Leg. Dist. 22	45	93	48.39%	15	30	50.00%	30	63	47.62%
Leg. Dist. 23	28	42	66.67%	17	24	70.83%	11	18	61.11%
Leg. Dist. 24	31	37	83.78%	17	20	85.00%	14	17	82.35%
Leg. Dist. 25	29	60	48.33%	12	26	46.15%	17	34	50.00%
Leg. Dist. 26	25	43	58.14%	8	18	44.44%	17	25	68.00%
Leg. Dist. 27	55	79	69.62%	21	28	75.00%	34	51	66.67%
Leg. Dist. 28	41	73	56.16%	6	24	25.00%	35	49	71.43%
Leg. Dist. 29	37	90	41.11%	16	36	44.44%	21	54	38.89%
CITY TOTAL:	335	589	56.88%	130	232	56.03%	205	357	57.42%
TOWNS									
Brighton	26	32	81.25%	10	13	76.92%	16	19	84.21%
Chili	27	47	57.45%	11	22	50.00%	16	25	64.00%
Clarkson	4	11	36.36%	1	5	20.00%	3	6	50.00%
East Rochester	12	22	54.55%	7	12	58.33%	5	10	50.00%
Gates	34	71	47.89%	16	28	57.14%	18	43	41.86%
Greece	110	200	55.00%	47	86	54.65%	63	114	55.26%
Hamlin	9	18	50.00%	3	7	42.86%	6	11	54.55%
Henrietta	32	47	68.09%	16	24	66.67%	16	23	69.57%
Irondequoit	39	72	54.17%	18	37	48.65%	21	35	60.00%
Mendon	5	7	71.43%	2	3	66.67%	3	4	75.00%
Ogden	20	33	60.61%	10	15	66.67%	10	18	55.56%
Parma	36	52	69.23%	20	30	66.67%	16	22	72.73%
Penfield	20	36	55.56%	9	16	56.25%	11	20	55.00%
Perinton	33	55	60.00%	18	28	64.29%	15	27	55.56%
Pittsford	7	12	58.33%	4	8	50.00%	3	4	75.00%
Riga	5	12	41.67%	1	5	20.00%	4	7	57.14%
Rush	8	11	72.73%	7	9	77.78%	1	2	50.00%
Sweden	9	25	36.00%	1	11	9.09%	8	14	57.14%
Webster	34	54	62.96%	20	31	64.52%	14	23	60.87%
Wheatland	5	8	62.50%	4	7	57.14%	1	1	100.00%
TOWNS TOTAL:	475	825	57.58%	225	397	56.68%	250	428	58.41%
GRAND TOTAL:	810	1,414	57.28%	355	629	56.44%	455	785	57.96%

2012 GENERAL ELECTION
WORKING FAMILIES TURNOUT BY AGE

LT/LD SUMMARY
Part 1 of 2

LEGISLATIVE DISTRICT OR TOWN	NDOB			18-24			25-34			35-44		
	VOTED	REGISTERED	TURNOUT	VOTED	REGISTERED	TURNOUT	VOTED	REGISTERED	TURNOUT	VOTED	REGISTERED	TURNOUT
CITY												
Leg. Dist. 07	0	0	0.00%	0	0	0.00%	3	4	75.00%	0	1	0.00%
Leg. Dist. 16	0	0	0.00%	0	0	0.00%	0	0	0.00%	0	0	0.00%
Leg. Dist. 21	0	0	0.00%	4	4	100.00%	13	26	50.00%	13	21	61.90%
Leg. Dist. 22	0	0	0.00%	6	20	30.00%	13	24	54.17%	17	26	65.38%
Leg. Dist. 23	0	0	0.00%	2	5	40.00%	13	13	100.00%	3	6	50.00%
Leg. Dist. 24	0	0	0.00%	1	1	100.00%	13	14	92.86%	9	12	75.00%
Leg. Dist. 25	0	0	0.00%	4	10	40.00%	8	14	57.14%	5	15	33.33%
Leg. Dist. 26	0	0	0.00%	0	2	0.00%	5	8	62.50%	11	18	61.11%
Leg. Dist. 27	0	0	0.00%	5	9	55.56%	12	22	54.55%	16	22	72.73%
Leg. Dist. 28	0	0	0.00%	6	11	54.55%	13	26	50.00%	11	17	64.71%
Leg. Dist. 29	0	0	0.00%	4	8	50.00%	10	33	30.30%	11	25	44.00%
CITY TOTAL:	0	0	0.00%	32	70	45.71%	103	184	55.98%	96	163	58.90%
TOWNS												
Brighton	0	0	0.00%	3	3	100.00%	5	6	83.33%	5	7	71.43%
Chili	0	0	0.00%	0	1	0.00%	12	15	80.00%	3	8	37.50%
Clarkson	0	0	0.00%	0	0	0.00%	1	2	50.00%	1	5	20.00%
East Rochester	0	0	0.00%	1	2	50.00%	2	5	40.00%	4	5	80.00%
Gates	0	0	0.00%	3	4	75.00%	4	17	23.53%	11	20	55.00%
Greece	0	0	0.00%	8	16	50.00%	21	34	61.76%	33	70	47.14%
Hamlin	0	0	0.00%	0	1	0.00%	1	3	33.33%	0	3	0.00%
Henrietta	0	0	0.00%	2	4	50.00%	6	8	75.00%	4	6	66.67%
Irondequoit	0	0	0.00%	3	7	42.86%	5	17	29.41%	14	20	70.00%
Mendon	0	0	0.00%	1	1	100.00%	1	2	50.00%	1	2	50.00%
Ogden	0	0	0.00%	0	2	0.00%	5	7	71.43%	5	6	83.33%
Parma	0	0	0.00%	3	6	50.00%	3	7	42.86%	9	15	60.00%
Penfield	0	0	0.00%	1	3	33.33%	3	7	42.86%	3	6	50.00%
Perinton	0	0	0.00%	2	6	33.33%	5	11	45.45%	12	22	54.55%
Pittsford	0	0	0.00%	0	2	0.00%	2	2	100.00%	1	2	50.00%
Riga	0	0	0.00%	0	0	0.00%	3	4	75.00%	1	4	25.00%
Rush	0	0	0.00%	1	1	100.00%	2	2	100.00%	3	3	100.00%
Sweden	0	0	0.00%	0	2	0.00%	3	7	42.86%	4	9	44.44%
Webster	0	0	0.00%	0	2	0.00%	8	10	80.00%	11	18	61.11%
Wheatland	0	0	0.00%	0	0	0.00%	2	3	66.67%	2	2	100.00%
TOWNS TOTAL:	0	0	0.00%	28	63	44.44%	94	169	55.62%	127	233	54.51%
GRAND TOTAL:	0	0	0.00%	60	133	45.11%	197	353	55.81%	223	396	56.31%

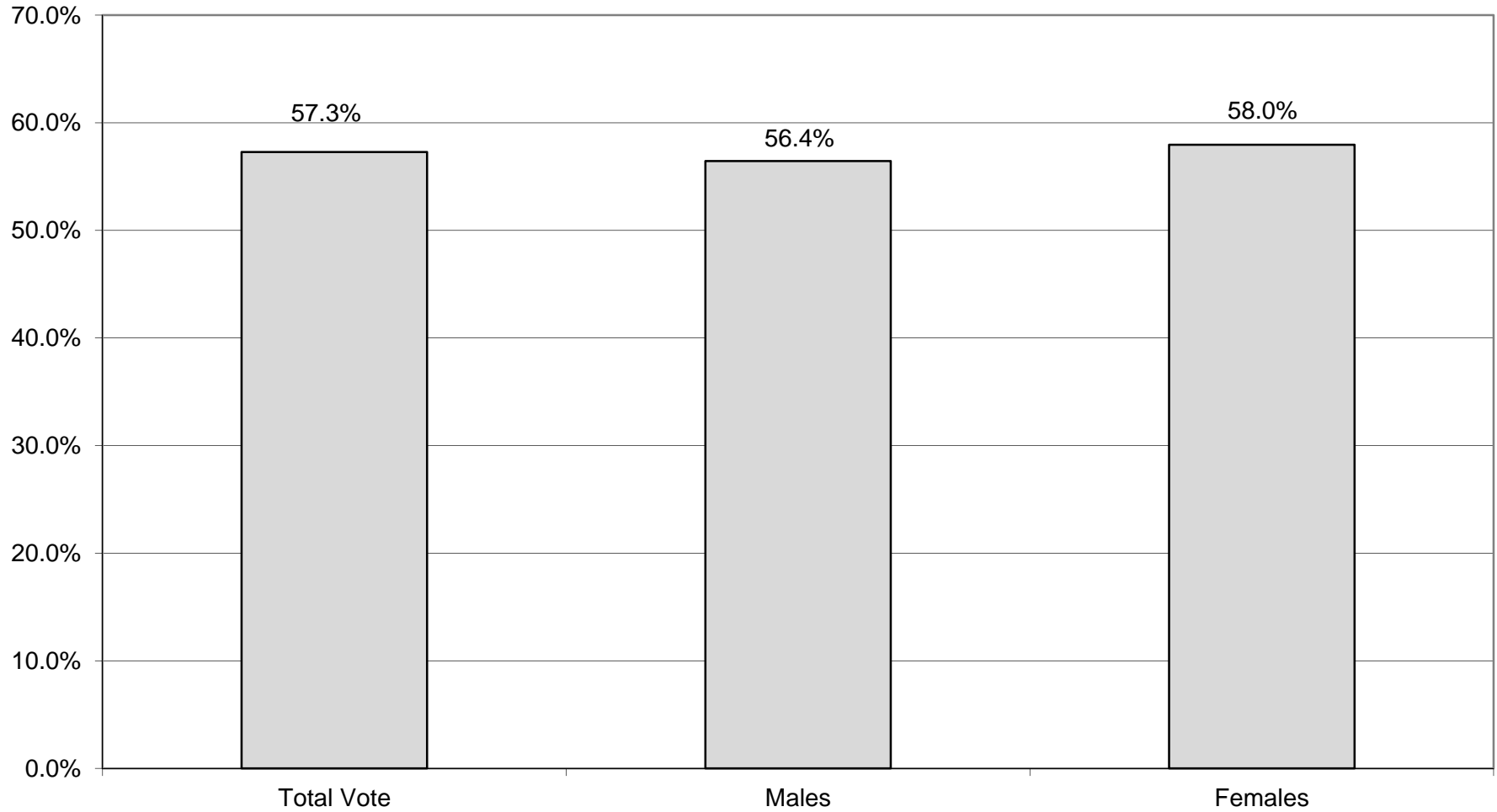
2012 GENERAL ELECTION
WORKING FAMILIES TURNOUT BY AGE

LT/LD SUMMARY

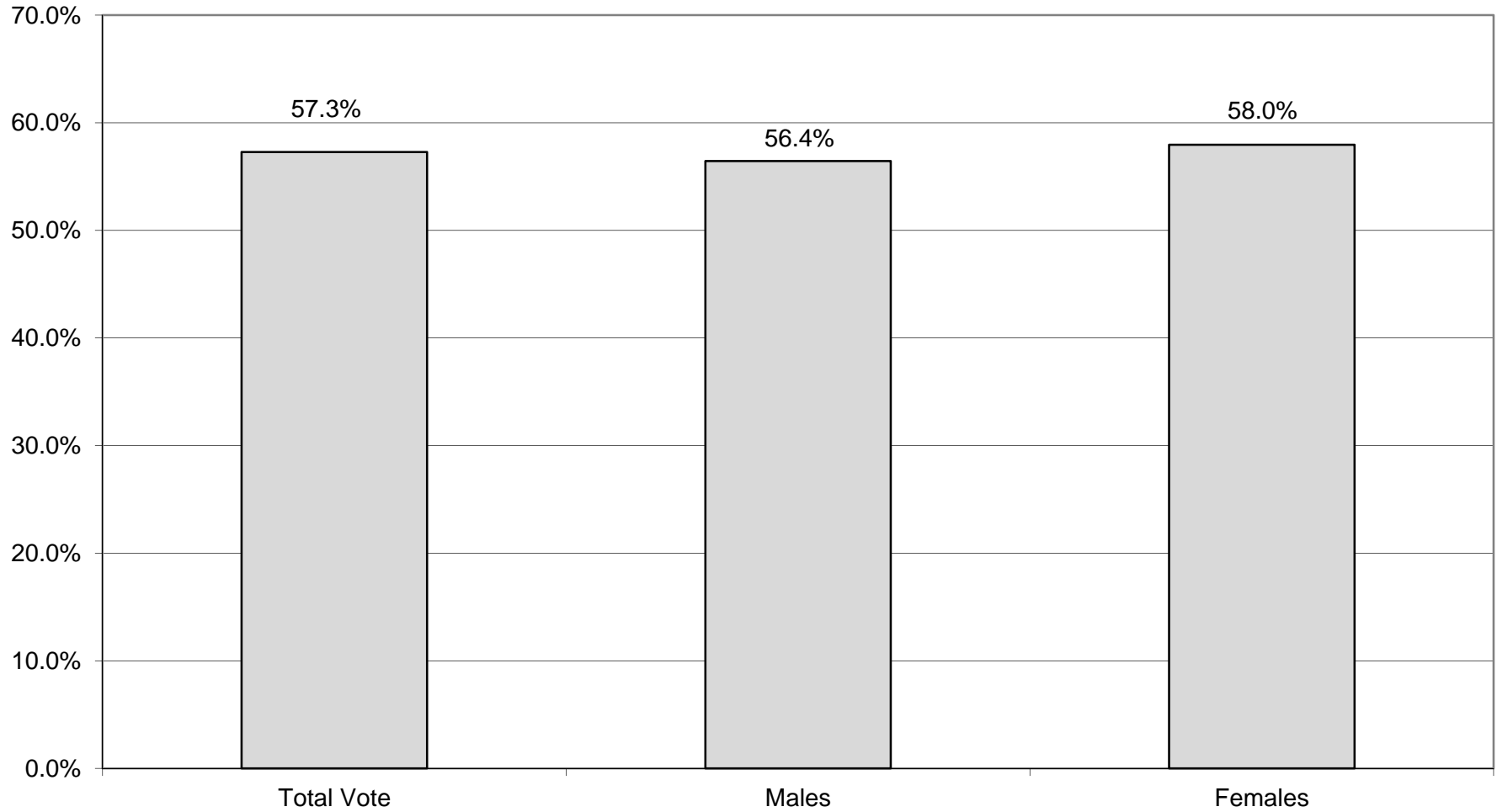
Part 2 of 2

LEGISLATIVE DISTRICT OR TOWN	45-54			55-64			65+		
	VOTED	REGISTERED	TURNOUT	VOTED	REGISTERED	TURNOUT	VOTED	REGISTERED	TURNOUT
CITY									
Leg. Dist. 07	0	0	0.00%	1	1	100.00%	0	0	0.00%
Leg. Dist. 16	0	0	0.00%	0	0	0.00%	0	0	0.00%
Leg. Dist. 21	8	11	72.73%	2	4	50.00%	0	0	0.00%
Leg. Dist. 22	5	11	45.45%	3	10	30.00%	1	2	50.00%
Leg. Dist. 23	3	6	50.00%	4	7	57.14%	3	5	60.00%
Leg. Dist. 24	3	4	75.00%	4	5	80.00%	1	1	100.00%
Leg. Dist. 25	9	14	64.29%	3	5	60.00%	0	2	0.00%
Leg. Dist. 26	6	11	54.55%	3	3	100.00%	0	1	0.00%
Leg. Dist. 27	14	17	82.35%	4	5	80.00%	4	4	100.00%
Leg. Dist. 28	7	14	50.00%	3	4	75.00%	1	1	100.00%
Leg. Dist. 29	6	15	40.00%	4	7	57.14%	2	2	100.00%
CITY TOTAL:	61	103	59.22%	31	51	60.78%	12	18	66.67%
TOWNS									
Brighton	10	12	83.33%	1	1	100.00%	2	3	66.67%
Chili	6	12	50.00%	6	9	66.67%	0	2	0.00%
Clarkson	2	2	100.00%	0	2	0.00%	0	0	0.00%
East Rochester	3	7	42.86%	2	3	66.67%	0	0	0.00%
Gates	8	15	53.33%	3	6	50.00%	5	9	55.56%
Greece	28	51	54.90%	16	24	66.67%	4	5	80.00%
Hamlin	5	7	71.43%	3	4	75.00%	0	0	0.00%
Henrietta	11	20	55.00%	7	7	100.00%	2	2	100.00%
Irondequoit	10	16	62.50%	6	10	60.00%	1	2	50.00%
Mendon	1	1	100.00%	1	1	100.00%	0	0	0.00%
Ogden	8	15	53.33%	1	2	50.00%	1	1	100.00%
Parma	13	15	86.67%	6	7	85.71%	2	2	100.00%
Penfield	6	7	85.71%	4	8	50.00%	3	5	60.00%
Perinton	7	7	100.00%	5	6	83.33%	2	3	66.67%
Pittsford	3	4	75.00%	1	1	100.00%	0	1	0.00%
Riga	0	3	0.00%	1	1	100.00%	0	0	0.00%
Rush	0	2	0.00%	2	3	66.67%	0	0	0.00%
Sweden	1	4	25.00%	1	3	33.33%	0	0	0.00%
Webster	9	15	60.00%	3	5	60.00%	3	4	75.00%
Wheatland	0	2	0.00%	1	1	100.00%	0	0	0.00%
TOWNS TOTAL:	131	217	60.37%	70	104	67.31%	25	39	64.10%
GRAND TOTAL:	192	320	60.00%	101	155	65.16%	37	57	64.91%

WORKING FAMILIES TURNOUT - TOTAL AND GENDER 2012 GENERAL ELECTION



WORKING FAMILIES TURNOUT - TOTAL AND GENDER 2012 GENERAL ELECTION



INDEPENDENCE SUMMARY

2012 GENERAL ELECTION
INDEPENDENCE TURNOUT BY GENDER

LT/LD SUMMARY

LEGISLATIVE DISTRICT OR TOWN	TOTAL VOTERS			MALES			FEMALES		
	VOTED	REGISTERED	TURNOUT	VOTED	REGISTERED	TURNOUT	VOTED	REGISTERED	TURNOUT
CITY									
Leg. Dist. 07	53	64	82.81%	25	32	78.13%	28	32	87.50%
Leg. Dist. 16	2	2	100.00%	1	1	100.00%	1	1	100.00%
Leg. Dist. 21	334	471	70.91%	127	200	63.50%	207	271	76.38%
Leg. Dist. 22	114	215	53.02%	62	109	56.88%	52	106	49.06%
Leg. Dist. 23	429	583	73.58%	209	290	72.07%	220	293	75.09%
Leg. Dist. 24	235	321	73.21%	121	166	72.89%	114	155	73.55%
Leg. Dist. 25	196	315	62.22%	90	163	55.21%	106	152	69.74%
Leg. Dist. 26	271	392	69.13%	133	189	70.37%	138	203	67.98%
Leg. Dist. 27	283	426	66.43%	140	227	61.67%	143	199	71.86%
Leg. Dist. 28	182	298	61.07%	94	155	60.65%	88	143	61.54%
Leg. Dist. 29	191	323	59.13%	110	177	62.15%	81	146	55.48%
CITY TOTAL:	2,290	3,410	67.16%	1,112	1,709	65.07%	1,178	1,701	69.25%
TOWNS									
Brighton	704	935	75.29%	297	411	72.26%	407	524	77.67%
Chili	539	793	67.97%	235	378	62.17%	304	415	73.25%
Clarkson	145	203	71.43%	76	105	72.38%	69	98	70.41%
East Rochester	169	251	67.33%	78	131	59.54%	91	120	75.83%
Gates	550	801	68.66%	265	386	68.65%	285	415	68.67%
Greece	1,966	2,894	67.93%	908	1,348	67.36%	1,058	1,546	68.43%
Hamlin	183	286	63.99%	89	142	62.68%	94	144	65.28%
Henrietta	726	1,004	72.31%	305	447	68.23%	421	557	75.58%
Irondequoit	1,176	1,651	71.23%	557	767	72.62%	619	884	70.02%
Mendon	252	337	74.78%	105	152	69.08%	147	185	79.46%
Ogden	420	617	68.07%	206	304	67.76%	214	313	68.37%
Parma	374	522	71.65%	185	261	70.88%	189	261	72.41%
Penfield	962	1,271	75.69%	447	603	74.13%	515	668	77.10%
Perinton	1,157	1,497	77.29%	515	673	76.52%	642	824	77.91%
Pittsford	654	843	77.58%	275	359	76.60%	379	484	78.31%
Riga	149	209	71.29%	73	102	71.57%	76	107	71.03%
Rush	76	107	71.03%	38	51	74.51%	38	56	67.86%
Sweden	238	348	68.39%	106	165	64.24%	132	183	72.13%
Webster	1,090	1,502	72.57%	524	725	72.28%	566	777	72.84%
Wheatland	123	169	72.78%	61	85	71.76%	62	84	73.81%
TOWNS TOTAL:	11,653	16,240	71.75%	5,345	7,595	70.38%	6,308	8,645	72.97%
GRAND TOTAL:	13,943	19,650	70.96%	6,457	9,304	69.40%	7,486	10,346	72.36%

2012 GENERAL ELECTION
INDEPENDENCE TURNOUT BY AGE

LT/LD SUMMARY
Part 1 of 2

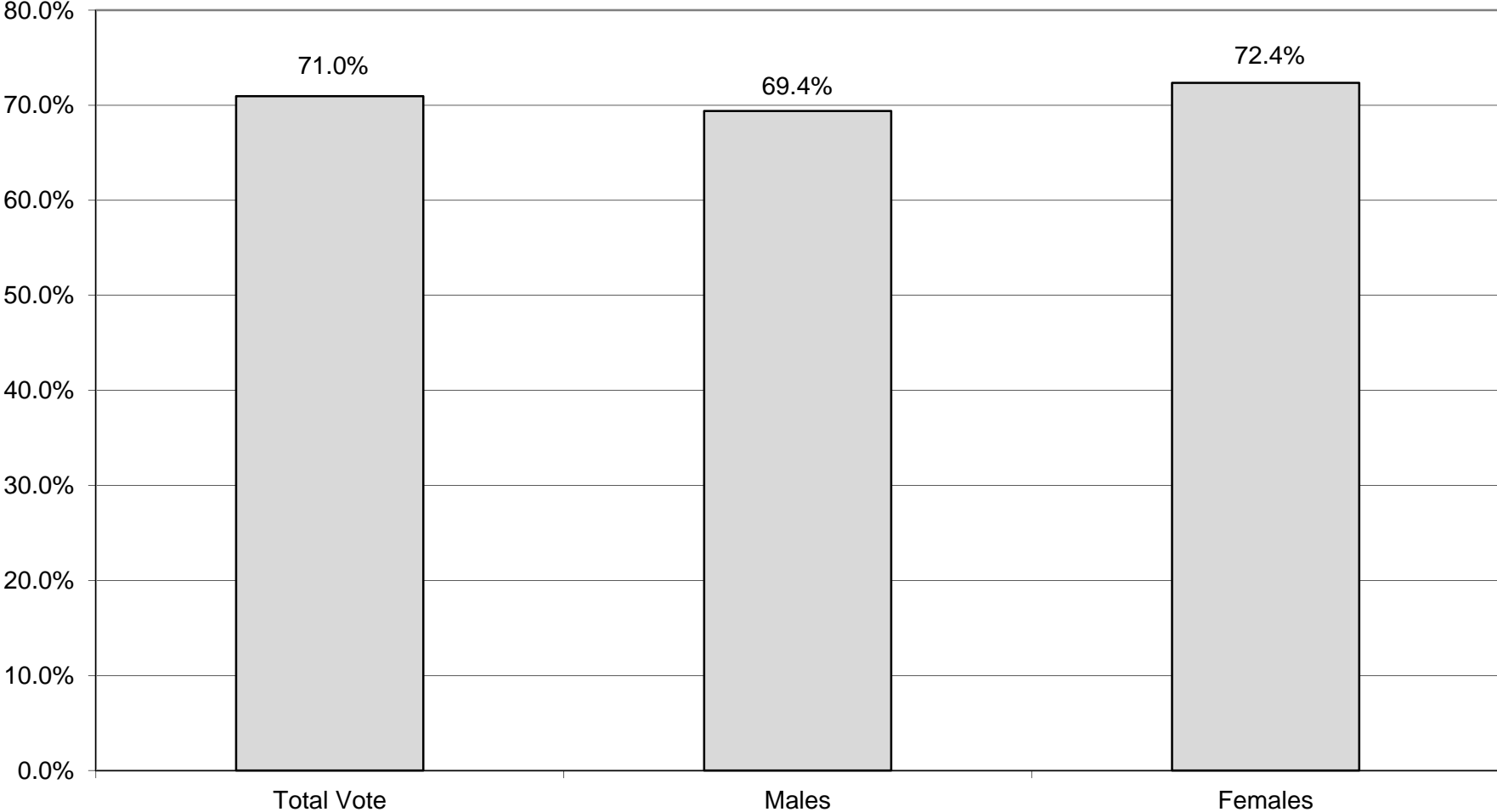
LEGISLATIVE DISTRICT OR TOWN	NDOB			18-24			25-34			35-44		
	VOTED	REGISTERED	TURNOUT	VOTED	REGISTERED	TURNOUT	VOTED	REGISTERED	TURNOUT	VOTED	REGISTERED	TURNOUT
CITY												
Leg. Dist. 07	0	0	0.00%	3	4	75.00%	10	11	90.91%	7	8	87.50%
Leg. Dist. 16	0	0	0.00%	0	0	0.00%	0	0	0.00%	0	0	0.00%
Leg. Dist. 21	0	0	0.00%	31	57	54.39%	87	129	67.44%	76	105	72.38%
Leg. Dist. 22	0	0	0.00%	20	43	46.51%	30	50	60.00%	20	41	48.78%
Leg. Dist. 23	0	0	0.00%	39	70	55.71%	157	221	71.04%	71	95	74.74%
Leg. Dist. 24	1	1	100.00%	19	29	65.52%	83	112	74.11%	50	64	78.13%
Leg. Dist. 25	0	0	0.00%	27	55	49.09%	46	82	56.10%	40	64	62.50%
Leg. Dist. 26	0	0	0.00%	20	37	54.05%	64	103	62.14%	47	70	67.14%
Leg. Dist. 27	0	0	0.00%	38	71	53.52%	58	101	57.43%	56	79	70.89%
Leg. Dist. 28	1	1	100.00%	21	39	53.85%	34	68	50.00%	36	53	67.92%
Leg. Dist. 29	0	0	0.00%	15	41	36.59%	39	86	45.35%	39	56	69.64%
CITY TOTAL:	2	2	100.00%	233	446	52.24%	608	963	63.14%	442	635	69.61%
TOWNS												
Brighton	0	0	0.00%	66	118	55.93%	141	207	68.12%	128	154	83.12%
Chili	0	0	0.00%	61	113	53.98%	92	178	51.69%	126	167	75.45%
Clarkson	0	0	0.00%	14	22	63.64%	17	33	51.52%	34	46	73.91%
East Rochester	0	0	0.00%	19	34	55.88%	30	56	53.57%	32	48	66.67%
Gates	0	0	0.00%	49	89	55.06%	80	172	46.51%	117	161	72.67%
Greece	0	0	0.00%	203	393	51.65%	357	624	57.21%	330	532	62.03%
Hamlin	0	0	0.00%	21	38	55.26%	27	56	48.21%	33	58	56.90%
Henrietta	0	1	0.00%	91	134	67.91%	155	231	67.10%	135	198	68.18%
Irondequoit	0	0	0.00%	86	182	47.25%	265	413	64.16%	245	327	74.92%
Mendon	0	0	0.00%	35	64	54.69%	32	55	58.18%	47	63	74.60%
Ogden	0	0	0.00%	43	86	50.00%	74	129	57.36%	84	129	65.12%
Parma	0	0	0.00%	48	85	56.47%	54	86	62.79%	80	115	69.57%
Penfield	0	0	0.00%	112	169	66.27%	152	256	59.38%	182	232	78.45%
Perinton	0	0	0.00%	90	188	47.87%	183	273	67.03%	202	255	79.22%
Pittsford	0	0	0.00%	75	120	62.50%	82	139	58.99%	123	160	76.88%
Riga	0	0	0.00%	11	21	52.38%	27	49	55.10%	21	35	60.00%
Rush	0	0	0.00%	8	13	61.54%	6	17	35.29%	12	15	80.00%
Sweden	0	0	0.00%	33	54	61.11%	41	68	60.29%	42	66	63.64%
Webster	0	0	0.00%	122	197	61.93%	148	252	58.73%	225	315	71.43%
Wheatland	0	0	0.00%	5	15	33.33%	27	45	60.00%	26	33	78.79%
TOWNS TOTAL:	0	1	0.00%	1,192	2,135	55.83%	1,990	3,339	59.60%	2,224	3,109	71.53%
GRAND TOTAL:	2	3	66.67%	1,425	2,581	55.21%	2,598	4,302	60.39%	2,666	3,744	71.21%

2012 GENERAL ELECTION
INDEPENDENCE TURNOUT BY AGE

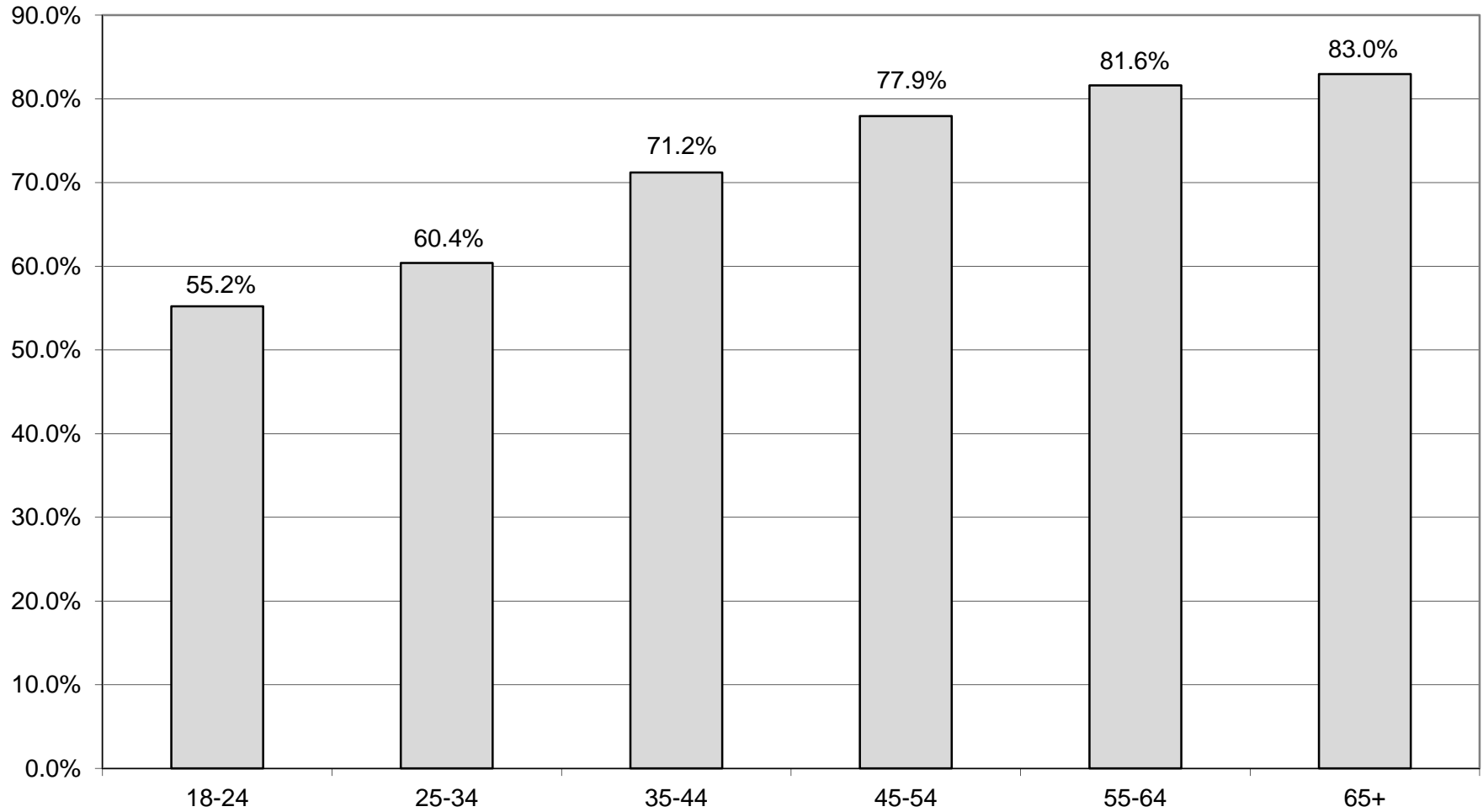
LT/LD SUMMARY
Part 2 of 2

LEGISLATIVE DISTRICT OR TOWN	45-54			55-64			65+		
	VOTED	REGISTERED	TURNOUT	VOTED	REGISTERED	TURNOUT	VOTED	REGISTERED	TURNOUT
CITY									
Leg. Dist. 07	7	12	58.33%	13	14	92.86%	13	15	86.67%
Leg. Dist. 16	0	0	0.00%	1	1	100.00%	1	1	100.00%
Leg. Dist. 21	60	76	78.95%	50	63	79.37%	30	41	73.17%
Leg. Dist. 22	23	45	51.11%	14	22	63.64%	7	14	50.00%
Leg. Dist. 23	79	96	82.29%	56	65	86.15%	27	36	75.00%
Leg. Dist. 24	46	58	79.31%	22	37	59.46%	14	20	70.00%
Leg. Dist. 25	36	51	70.59%	24	35	68.57%	23	28	82.14%
Leg. Dist. 26	59	79	74.68%	54	65	83.08%	27	38	71.05%
Leg. Dist. 27	56	71	78.87%	53	71	74.65%	22	33	66.67%
Leg. Dist. 28	45	77	58.44%	31	41	75.61%	14	19	73.68%
Leg. Dist. 29	45	65	69.23%	32	46	69.57%	21	29	72.41%
CITY TOTAL:	456	630	72.38%	350	460	76.09%	199	274	72.63%
TOWNS									
Brighton	151	181	83.43%	96	125	76.80%	122	150	81.33%
Chili	96	134	71.64%	73	94	77.66%	91	107	85.05%
Clarkson	37	53	69.81%	19	25	76.00%	24	24	100.00%
East Rochester	35	51	68.63%	33	40	82.50%	20	22	90.91%
Gates	105	138	76.09%	93	113	82.30%	106	128	82.81%
Greece	414	549	75.41%	326	398	81.91%	336	398	84.42%
Hamlin	49	68	72.06%	29	38	76.32%	24	28	85.71%
Henrietta	147	196	75.00%	97	118	82.20%	101	126	80.16%
Irondequoit	234	305	76.72%	190	235	80.85%	156	189	82.54%
Mendon	55	64	85.94%	50	55	90.91%	33	36	91.67%
Ogden	96	126	76.19%	66	81	81.48%	57	66	86.36%
Parma	72	92	78.26%	68	81	83.95%	52	63	82.54%
Penfield	230	272	84.56%	142	163	87.12%	144	179	80.45%
Perinton	275	320	85.94%	192	219	87.67%	215	242	88.84%
Pittsford	171	187	91.44%	93	111	83.78%	110	126	87.30%
Riga	40	48	83.33%	26	30	86.67%	24	26	92.31%
Rush	24	32	75.00%	10	12	83.33%	16	18	88.89%
Sweden	57	80	71.25%	38	45	84.44%	27	35	77.14%
Webster	255	327	77.98%	160	192	83.33%	180	219	82.19%
Wheatland	29	32	90.63%	24	30	80.00%	12	14	85.71%
TOWNS TOTAL:	2,572	3,255	79.02%	1,825	2,205	82.77%	1,850	2,196	84.24%
GRAND TOTAL:	3,028	3,885	77.94%	2,175	2,665	81.61%	2,049	2,470	82.96%

INDEPENDENCE TURNOUT - TOTAL AND GENDER 2012 GENERAL ELECTION



INDEPENDENCE TURNOUT BY AGE GROUP 2012 GENERAL ELECTION



GREEN SUMMARY

2012 GENERAL ELECTION
GREEN TURNOUT BY GENDER

LT/LD SUMMARY

LEGISLATIVE DISTRICT OR TOWN	TOTAL VOTERS			MALES			FEMALES		
	VOTED	REGISTERED	TURNOUT	VOTED	REGISTERED	TURNOUT	VOTED	REGISTERED	TURNOUT
CITY									
Leg. Dist. 07	3	5	60.00%	2	3	66.67%	1	2	50.00%
Leg. Dist. 16	0	0	0.00%	0	0	0.00%	0	0	0.00%
Leg. Dist. 21	41	46	89.13%	22	26	84.62%	19	20	95.00%
Leg. Dist. 22	8	11	72.73%	6	9	66.67%	2	2	100.00%
Leg. Dist. 23	72	92	78.26%	39	48	81.25%	33	44	75.00%
Leg. Dist. 24	62	74	83.78%	35	43	81.40%	27	31	87.10%
Leg. Dist. 25	30	37	81.08%	19	24	79.17%	11	13	84.62%
Leg. Dist. 26	8	14	57.14%	2	5	40.00%	6	9	66.67%
Leg. Dist. 27	17	27	62.96%	8	13	61.54%	9	14	64.29%
Leg. Dist. 28	16	20	80.00%	11	11	100.00%	5	9	55.56%
Leg. Dist. 29	9	13	69.23%	4	7	57.14%	5	6	83.33%
CITY TOTAL:	266	339	78.47%	148	189	78.31%	118	150	78.67%
TOWNS									
Brighton	58	80	72.50%	38	50	76.00%	20	30	66.67%
Chili	22	29	75.86%	12	16	75.00%	10	13	76.92%
Clarkson	0	0	0.00%	0	0	0.00%	0	0	0.00%
East Rochester	7	12	58.33%	5	9	55.56%	2	3	66.67%
Gates	21	29	72.41%	13	17	76.47%	8	12	66.67%
Greece	51	107	47.66%	36	77	46.75%	15	30	50.00%
Hamlin	12	14	85.71%	7	7	100.00%	5	7	71.43%
Henrietta	22	27	81.48%	16	20	80.00%	6	7	85.71%
Irondequoit	64	87	73.56%	39	55	70.91%	25	32	78.13%
Mendon	11	20	55.00%	6	11	54.55%	5	9	55.56%
Ogden	16	25	64.00%	6	14	42.86%	10	11	90.91%
Parma	9	14	64.29%	8	11	72.73%	1	3	33.33%
Penfield	22	31	70.97%	17	23	73.91%	5	8	62.50%
Perinton	51	84	60.71%	30	48	62.50%	21	36	58.33%
Pittsford	13	29	44.83%	11	22	50.00%	2	7	28.57%
Riga	3	6	50.00%	1	4	25.00%	2	2	100.00%
Rush	5	7	71.43%	3	3	100.00%	2	4	50.00%
Sweden	16	22	72.73%	11	14	78.57%	5	8	62.50%
Webster	19	37	51.35%	9	21	42.86%	10	16	62.50%
Wheatland	2	6	33.33%	1	3	33.33%	1	3	33.33%
TOWNS TOTAL:	424	666	63.66%	269	425	63.29%	155	241	64.32%
GRAND TOTAL:	690	1,005	68.66%	417	614	67.92%	273	391	69.82%

2012 GENERAL ELECTION
GREEN TURNOUT BY AGE

LT/LD SUMMARY
Part 1 of 2

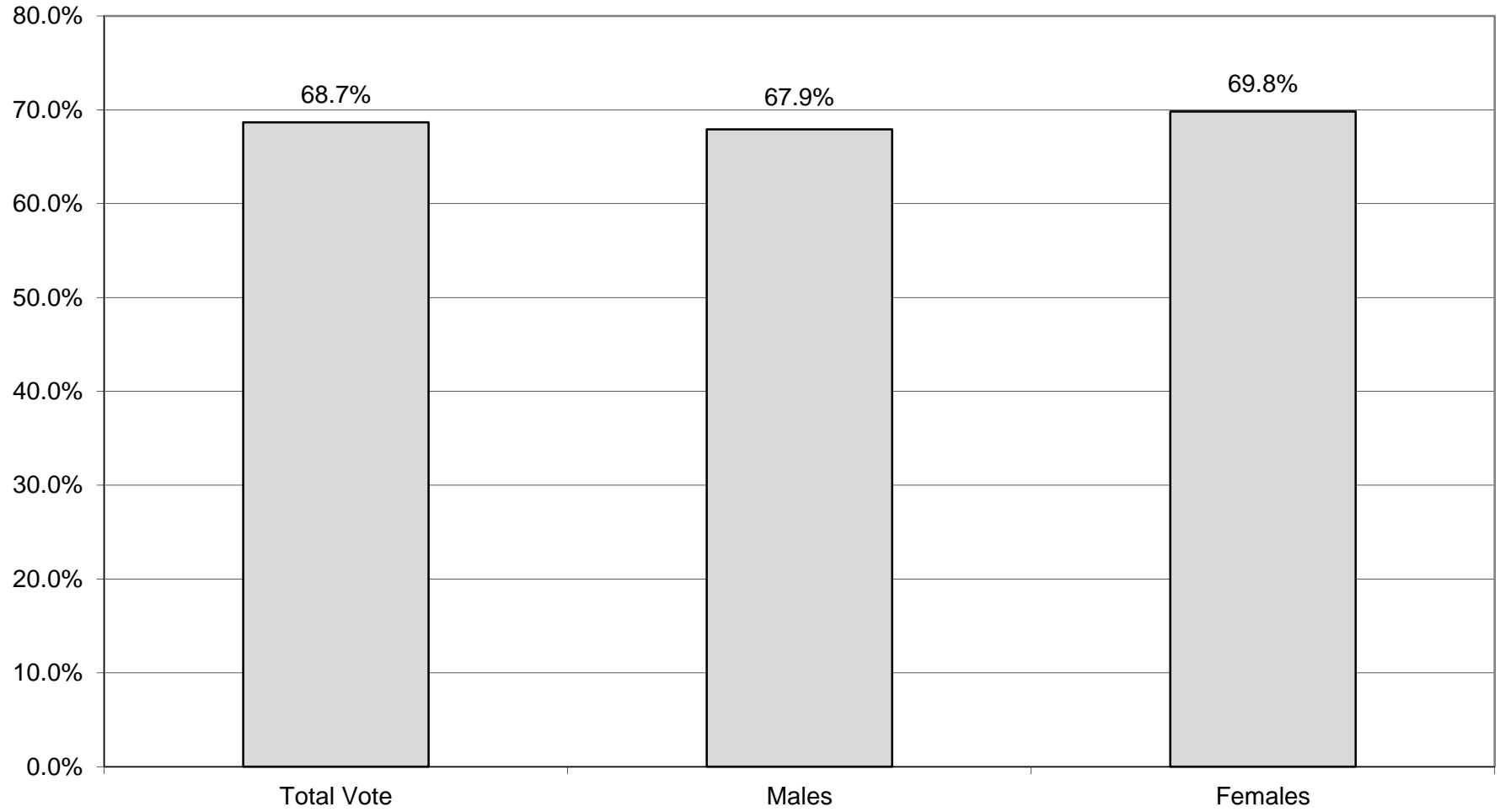
LEGISLATIVE DISTRICT OR TOWN	NDOB			18-24			25-34			35-44		
	VOTED	REGISTERED	TURNOUT	VOTED	REGISTERED	TURNOUT	VOTED	REGISTERED	TURNOUT	VOTED	REGISTERED	TURNOUT
CITY												
Leg. Dist. 07	0	0	0.00%	0	0	0.00%	1	3	33.33%	1	1	100.00%
Leg. Dist. 16	0	0	0.00%	0	0	0.00%	0	0	0.00%	0	0	0.00%
Leg. Dist. 21	0	0	0.00%	1	2	50.00%	11	12	91.67%	14	16	87.50%
Leg. Dist. 22	0	0	0.00%	1	2	50.00%	4	5	80.00%	0	0	0.00%
Leg. Dist. 23	0	0	0.00%	7	10	70.00%	21	27	77.78%	28	33	84.85%
Leg. Dist. 24	0	0	0.00%	3	3	100.00%	23	29	79.31%	15	19	78.95%
Leg. Dist. 25	0	0	0.00%	3	5	60.00%	13	14	92.86%	6	9	66.67%
Leg. Dist. 26	0	0	0.00%	0	0	0.00%	2	6	33.33%	2	3	66.67%
Leg. Dist. 27	0	0	0.00%	2	5	40.00%	4	12	33.33%	5	5	100.00%
Leg. Dist. 28	0	0	0.00%	0	0	0.00%	10	14	71.43%	1	1	100.00%
Leg. Dist. 29	0	0	0.00%	1	1	100.00%	3	3	100.00%	1	2	50.00%
CITY TOTAL:	0	0	0.00%	18	28	64.29%	92	125	73.60%	73	89	82.02%
TOWNS												
Brighton	0	0	0.00%	1	3	33.33%	11	23	47.83%	20	21	95.24%
Chili	0	0	0.00%	5	5	100.00%	4	8	50.00%	6	8	75.00%
Clarkson	0	0	0.00%	0	0	0.00%	0	0	0.00%	0	0	0.00%
East Rochester	0	0	0.00%	1	2	50.00%	2	5	40.00%	3	4	75.00%
Gates	0	0	0.00%	1	2	50.00%	9	14	64.29%	3	5	60.00%
Greece	0	0	0.00%	9	15	60.00%	13	52	25.00%	15	22	68.18%
Hamlin	0	0	0.00%	2	3	66.67%	7	7	100.00%	1	2	50.00%
Henrietta	0	0	0.00%	3	3	100.00%	10	14	71.43%	4	5	80.00%
Irondequoit	0	0	0.00%	10	15	66.67%	19	33	57.58%	15	17	88.24%
Mendon	0	0	0.00%	1	5	20.00%	4	9	44.44%	3	3	100.00%
Ogden	0	0	0.00%	4	4	100.00%	5	11	45.45%	6	6	100.00%
Parma	0	0	0.00%	0	2	0.00%	6	9	66.67%	3	3	100.00%
Penfield	0	0	0.00%	2	4	50.00%	10	15	66.67%	4	4	100.00%
Perinton	0	0	0.00%	11	22	50.00%	16	36	44.44%	13	15	86.67%
Pittsford	0	0	0.00%	1	3	33.33%	2	14	14.29%	2	3	66.67%
Riga	0	0	0.00%	0	2	0.00%	0	1	0.00%	1	1	100.00%
Rush	0	0	0.00%	1	1	100.00%	0	2	0.00%	0	0	0.00%
Sweden	0	0	0.00%	1	1	100.00%	5	10	50.00%	7	7	100.00%
Webster	0	0	0.00%	3	4	75.00%	11	24	45.83%	1	2	50.00%
Wheatland	0	0	0.00%	1	1	100.00%	0	3	0.00%	1	2	50.00%
TOWNS TOTAL:	0	0	0.00%	57	97	58.76%	134	290	46.21%	108	130	83.08%
GRAND TOTAL:	0	0	0.00%	75	125	60.00%	226	415	54.46%	181	219	82.65%

2012 GENERAL ELECTION
GREEN TURNOUT BY AGE

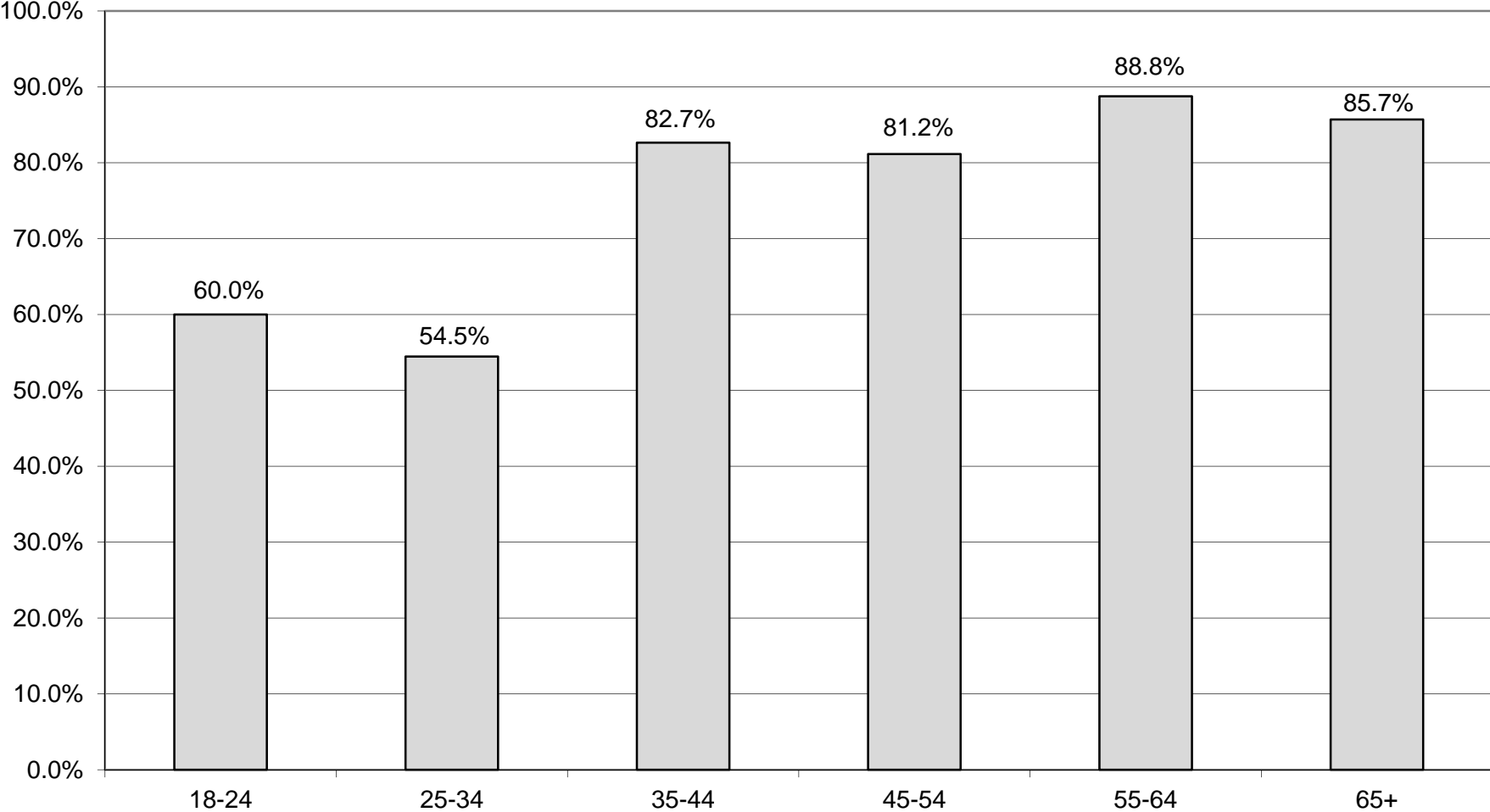
LT/LD SUMMARY
Part 2 of 2

LEGISLATIVE DISTRICT OR TOWN	45-54			55-64			65+		
	VOTED	REGISTERED	TURNOUT	VOTED	REGISTERED	TURNOUT	VOTED	REGISTERED	TURNOUT
CITY									
Leg. Dist. 07	0	0	0.00%	1	1	100.00%	0	0	0.00%
Leg. Dist. 16	0	0	0.00%	0	0	0.00%	0	0	0.00%
Leg. Dist. 21	4	4	100.00%	9	10	90.00%	2	2	100.00%
Leg. Dist. 22	2	2	100.00%	1	2	50.00%	0	0	0.00%
Leg. Dist. 23	12	16	75.00%	5	6	83.33%	0	0	0.00%
Leg. Dist. 24	8	9	88.89%	9	10	90.00%	4	4	100.00%
Leg. Dist. 25	1	1	100.00%	6	7	85.71%	1	1	100.00%
Leg. Dist. 26	0	0	0.00%	3	4	75.00%	1	1	100.00%
Leg. Dist. 27	2	2	100.00%	4	3	100.00%	0	0	0.00%
Leg. Dist. 28	4	4	100.00%	1	1	100.00%	0	0	0.00%
Leg. Dist. 29	2	2	100.00%	1	3	33.33%	1	2	50.00%
CITY TOTAL:	35	40	87.50%	40	47	85.11%	9	10	90.00%
TOWNS									
Brighton	14	20	70.00%	10	10	100.00%	2	3	66.67%
Chili	3	4	75.00%	3	3	100.00%	1	1	100.00%
Clarkson	0	0	0.00%	0	0	0.00%	0	0	0.00%
East Rochester	0	0	0.00%	1	1	100.00%	0	0	0.00%
Gates	5	5	100.00%	1	1	100.00%	2	2	100.00%
Greece	7	10	70.00%	3	4	75.00%	4	4	100.00%
Hamlin	2	2	100.00%	0	0	0.00%	0	0	0.00%
Henrietta	3	3	100.00%	1	1	100.00%	1	1	100.00%
Irondequoit	10	11	90.91%	6	7	85.71%	4	4	100.00%
Mendon	3	3	100.00%	0	0	0.00%	0	0	0.00%
Ogden	1	3	33.33%	0	1	0.00%	0	0	0.00%
Parma	0	0	0.00%	0	0	0.00%	0	0	0.00%
Penfield	3	6	50.00%	1	1	100.00%	1	1	100.00%
Perinton	6	6	100.00%	3	3	100.00%	2	2	100.00%
Pittsford	4	5	80.00%	2	2	100.00%	2	2	100.00%
Riga	1	1	100.00%	1	1	100.00%	0	0	0.00%
Rush	0	0	0.00%	3	3	100.00%	1	1	100.00%
Sweden	0	1	0.00%	2	2	100.00%	1	1	100.00%
Webster	2	2	100.00%	2	2	100.00%	0	3	0.00%
Wheatland	0	0	0.00%	0	0	0.00%	0	0	0.00%
TOWNS TOTAL:	64	82	78.05%	39	42	92.86%	21	25	84.00%
GRAND TOTAL:	99	122	81.15%	79	89	88.76%	30	35	85.71%

GREEN TURNOUT - TOTAL AND GENDER 2012 GENERAL ELECTION



GREEN TURNOUT BY AGE GROUP 2012 GENERAL ELECTION



BLANKS SUMMARY

2012 GENERAL ELECTION
BLANK TURNOUT BY GENDER

LT/LD SUMMARY

LEGISLATIVE DISTRICT OR TOWN	TOTAL VOTERS			MALES			FEMALES		
	VOTED	REGISTERED	TURNOUT	VOTED	REGISTERED	TURNOUT	VOTED	REGISTERED	TURNOUT
CITY									
Leg. Dist. 07	183	279	65.59%	93	140	66.43%	90	139	64.75%
Leg. Dist. 16	1	3	33.33%	0	1	0.00%	1	2	50.00%
Leg. Dist. 21	1,568	2,368	66.22%	745	1,137	65.52%	823	1,231	66.86%
Leg. Dist. 22	930	1,788	52.01%	382	780	48.97%	548	1,008	54.37%
Leg. Dist. 23	2,137	2,891	73.92%	1,136	1,532	74.15%	1,001	1,359	73.66%
Leg. Dist. 24	1,248	1,698	73.50%	664	905	73.37%	584	793	73.64%
Leg. Dist. 25	1,099	1,789	61.43%	506	867	58.36%	593	922	64.32%
Leg. Dist. 26	1,126	1,798	62.63%	526	846	62.17%	600	952	63.03%
Leg. Dist. 27	1,247	2,078	60.01%	582	1,003	58.03%	665	1,075	61.86%
Leg. Dist. 28	927	1,826	50.77%	405	811	49.94%	522	1,015	51.43%
Leg. Dist. 29	1,085	2,059	52.70%	455	900	50.56%	630	1,159	54.36%
CITY TOTAL:	11,551	18,577	62.18%	5,494	8,922	61.58%	6,057	9,655	62.73%
TOWNS									
Brighton	3,949	5,225	75.58%	1,936	2,585	74.89%	2,013	2,640	76.25%
Chili	3,165	4,577	69.15%	1,534	2,271	67.55%	1,631	2,306	70.73%
Clarkson	582	882	65.99%	277	411	67.40%	305	471	64.76%
East Rochester	635	973	65.26%	286	451	63.41%	349	522	66.86%
Gates	2,562	4,082	62.76%	1,221	1,940	62.94%	1,341	2,142	62.61%
Greece	10,093	15,229	66.27%	4,750	7,171	66.24%	5,343	8,058	66.31%
Hamlin	798	1,273	62.69%	396	614	64.50%	402	659	61.00%
Henrietta	3,595	5,226	68.79%	1,799	2,663	67.56%	1,796	2,563	70.07%
Irondequoit	6,029	8,506	70.88%	2,860	4,030	70.97%	3,169	4,476	70.80%
Mendon	1,165	1,539	75.70%	581	767	75.75%	584	772	75.65%
Ogden	2,232	3,145	70.97%	1,093	1,532	71.34%	1,139	1,613	70.61%
Parma	1,813	2,744	66.07%	891	1,350	66.00%	922	1,394	66.14%
Penfield	4,932	6,559	75.19%	2,435	3,208	75.90%	2,497	3,351	74.52%
Perinton	6,282	8,362	75.13%	3,110	4,176	74.47%	3,172	4,186	75.78%
Pittsford	3,732	4,856	76.85%	1,821	2,379	76.54%	1,911	2,477	77.15%
Riga	619	939	65.92%	313	479	65.34%	306	460	66.52%
Rush	485	650	74.62%	241	336	71.73%	244	314	77.71%
Sweden	1,072	1,538	69.70%	494	713	69.28%	578	825	70.06%
Webster	5,557	7,538	73.72%	2,697	3,621	74.48%	2,860	3,917	73.02%
Wheatland	495	726	68.18%	230	341	67.45%	265	385	68.83%
TOWNS TOTAL:	59,792	84,569	70.70%	28,965	41,038	70.58%	30,827	43,531	70.82%
GRAND TOTAL:	71,343	103,146	69.17%	34,459	49,960	68.97%	36,884	53,186	69.35%

2012 GENERAL ELECTION
BLANK TURNOUT BY AGE

LT/LD SUMMARY
Part 1 of 2

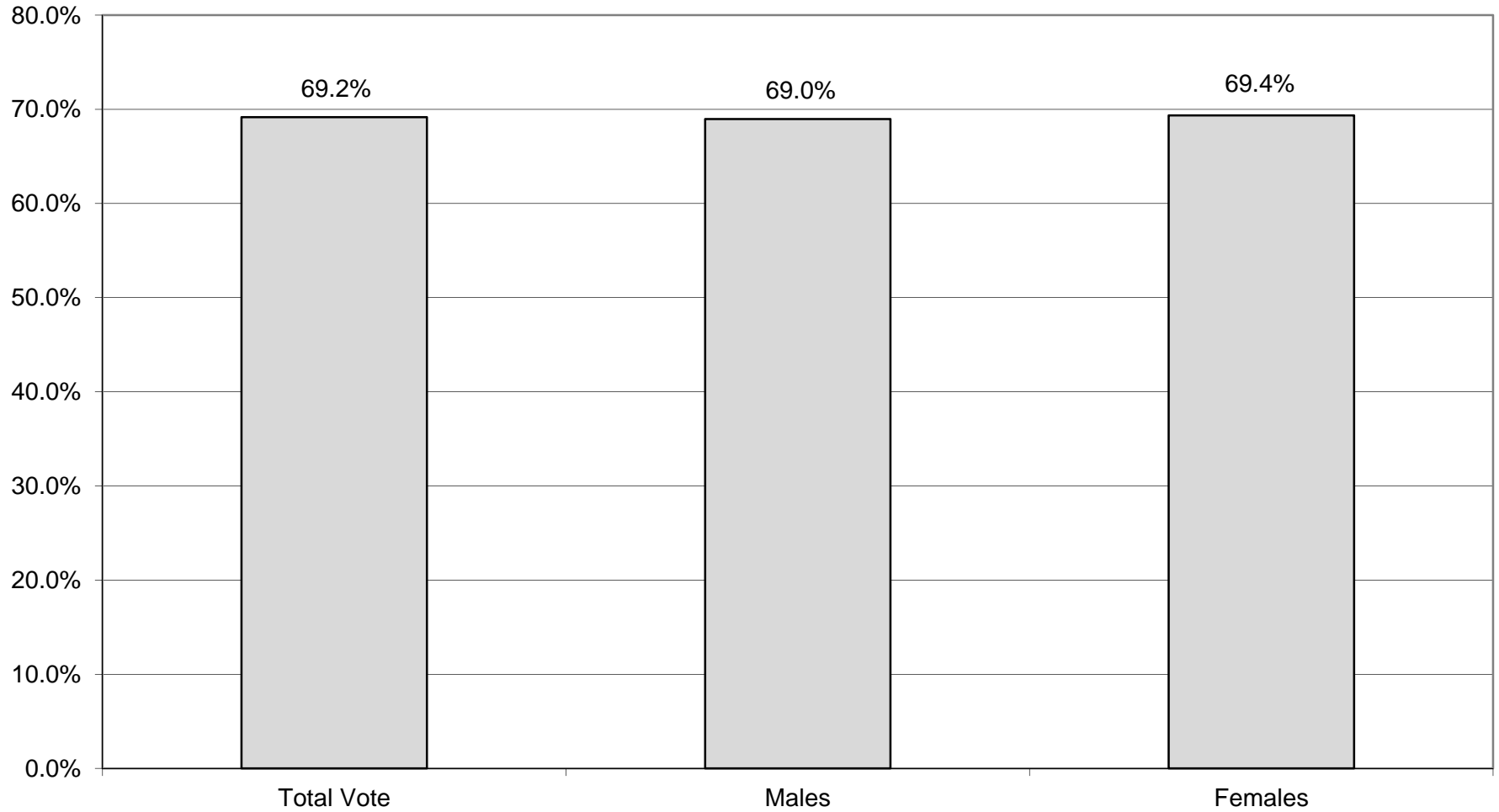
LEGISLATIVE DISTRICT OR TOWN CITY	NDOB			18-24			25-34			35-44		
	VOTED	REGISTERED	TURNOUT	VOTED	REGISTERED	TURNOUT	VOTED	REGISTERED	TURNOUT	VOTED	REGISTERED	TURNOUT
Leg. Dist. 07	0	0	0.00%	9	23	39.13%	26	43	60.47%	26	43	60.47%
Leg. Dist. 16	0	0	0.00%	0	0	0.00%	0	2	0.00%	0	0	0.00%
Leg. Dist. 21	4	5	80.00%	159	302	52.65%	398	610	65.25%	320	490	65.31%
Leg. Dist. 22	2	5	40.00%	218	407	53.56%	204	420	48.57%	181	347	52.16%
Leg. Dist. 23	10	11	90.91%	177	273	64.84%	646	909	71.07%	310	457	67.83%
Leg. Dist. 24	4	4	100.00%	105	155	67.74%	390	549	71.04%	191	263	72.62%
Leg. Dist. 25	1	1	100.00%	194	349	55.59%	302	487	62.01%	187	309	60.52%
Leg. Dist. 26	2	3	66.67%	81	161	50.31%	218	408	53.43%	175	311	56.27%
Leg. Dist. 27	3	6	50.00%	207	380	54.47%	257	448	57.37%	208	367	56.68%
Leg. Dist. 28	2	5	40.00%	122	293	41.64%	203	444	45.72%	166	337	49.26%
Leg. Dist. 29	2	5	40.00%	171	348	49.14%	218	494	44.13%	183	358	51.12%
CITY TOTAL:	30	45	66.67%	1,443	2,691	53.62%	2,862	4,814	59.45%	1,947	3,282	59.32%
TOWNS												
Brighton	15	19	78.95%	282	491	57.43%	604	946	63.85%	562	755	74.44%
Chili	6	14	42.86%	267	464	57.54%	432	872	49.54%	474	775	61.16%
Clarkson	0	0	0.00%	43	92	46.74%	66	133	49.62%	96	172	55.81%
East Rochester	2	4	50.00%	55	122	45.08%	114	206	55.34%	94	148	63.51%
Gates	2	3	66.67%	206	395	52.15%	380	781	48.66%	360	647	55.64%
Greece	39	52	75.00%	761	1,594	47.74%	1,362	2,720	50.07%	1,294	2,243	57.69%
Hamlin	0	0	0.00%	66	153	43.14%	93	215	43.26%	104	202	51.49%
Henrietta	5	8	62.50%	269	506	53.16%	535	957	55.90%	567	886	64.00%
Irondequoit	31	41	75.61%	405	774	52.33%	847	1,519	55.76%	887	1,315	67.45%
Mendon	1	1	100.00%	104	206	50.49%	91	186	48.92%	161	210	76.67%
Ogden	9	9	100.00%	186	325	57.23%	257	510	50.39%	328	507	64.69%
Parma	2	2	100.00%	137	321	42.68%	185	459	40.31%	258	433	59.58%
Penfield	17	24	70.83%	340	646	52.63%	488	880	55.45%	737	1,015	72.61%
Perinton	6	9	66.67%	484	1,021	47.40%	640	1,140	56.14%	822	1,160	70.86%
Pittsford	5	6	83.33%	309	581	53.18%	273	529	51.61%	546	726	75.21%
Riga	0	1	0.00%	47	102	46.08%	56	132	42.42%	85	138	61.59%
Rush	0	0	0.00%	35	64	54.69%	33	79	41.77%	41	69	59.42%
Sweden	0	1	0.00%	90	163	55.21%	144	289	49.83%	153	228	67.11%
Webster	15	26	57.69%	378	691	54.70%	498	994	50.10%	819	1,173	69.82%
Wheatland	1	1	100.00%	41	72	56.94%	66	137	48.18%	54	87	62.07%
TOWNS TOTAL:	156	221	70.59%	4,505	8,783	51.29%	7,164	13,684	52.35%	8,442	12,889	65.50%
GRAND TOTAL:	186	266	69.92%	5,948	11,474	51.84%	10,026	18,498	54.20%	10,389	16,171	64.24%

2012 GENERAL ELECTION
BLANK TURNOUT BY AGE

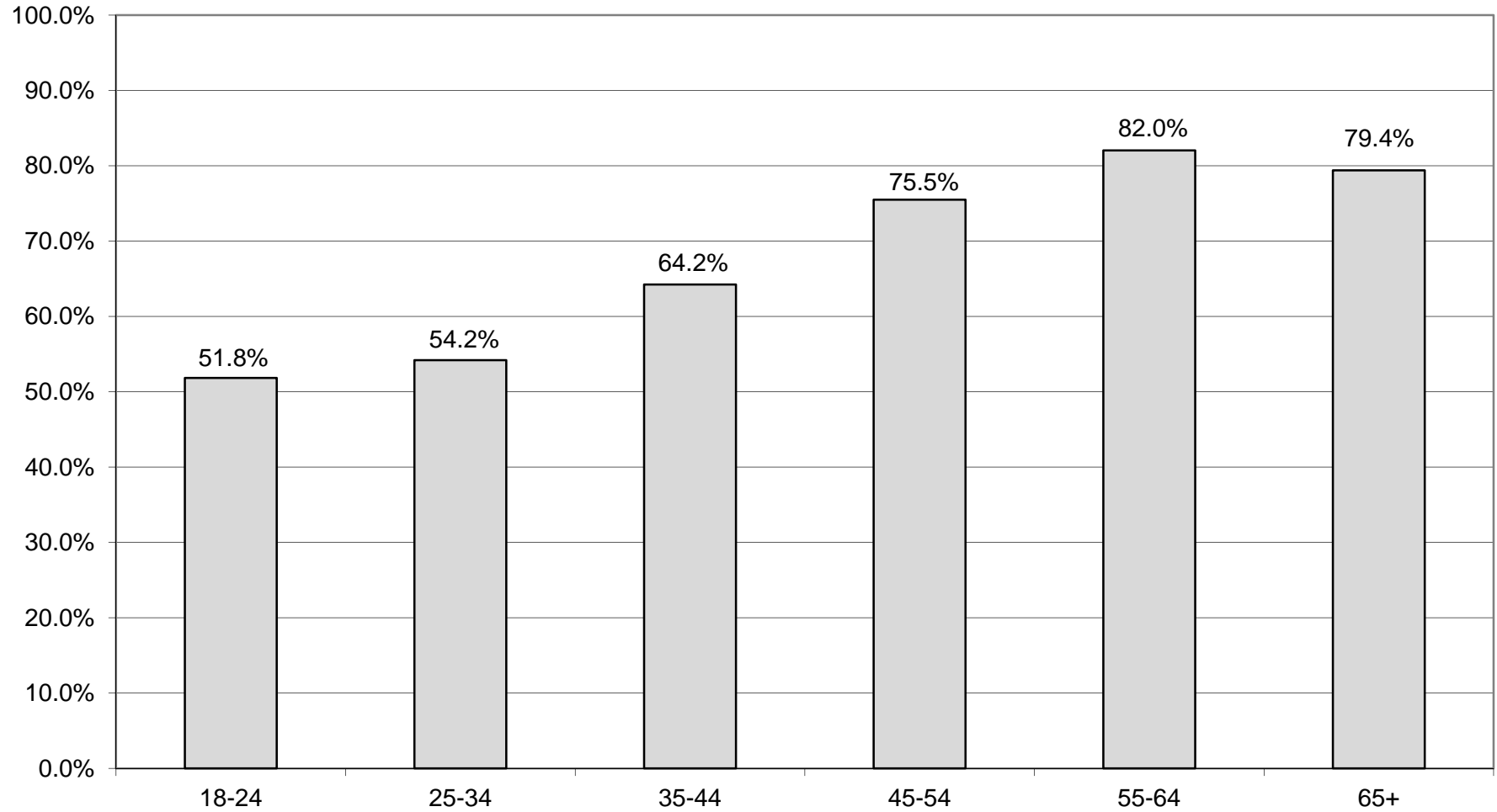
LT/LD SUMMARY
Part 2 of 2

LEGISLATIVE DISTRICT OR TOWN	45-54			55-64			65+		
	VOTED	REGISTERED	TURNOUT	VOTED	REGISTERED	TURNOUT	VOTED	REGISTERED	TURNOUT
CITY									
Leg. Dist. 07	36	52	69.23%	49	70	70.00%	37	48	77.08%
Leg. Dist. 16	0	0	0.00%	1	1	100.00%	0	0	0.00%
Leg. Dist. 21	279	408	68.38%	246	322	76.40%	162	231	70.13%
Leg. Dist. 22	139	269	51.67%	113	196	57.65%	73	144	50.69%
Leg. Dist. 23	323	425	76.00%	364	447	81.43%	307	369	83.20%
Leg. Dist. 24	207	272	76.10%	206	249	82.73%	145	206	70.39%
Leg. Dist. 25	154	258	59.69%	160	224	71.43%	101	161	62.73%
Leg. Dist. 26	225	336	66.96%	277	364	76.10%	148	215	68.84%
Leg. Dist. 27	190	322	59.01%	213	321	66.36%	169	234	72.22%
Leg. Dist. 28	182	326	55.83%	161	268	60.07%	91	153	59.48%
Leg. Dist. 29	205	337	60.83%	196	310	63.23%	110	207	53.14%
CITY TOTAL:	1,940	3,005	64.56%	1,986	2,772	71.65%	1,343	1,968	68.24%
TOWNS									
Brighton	744	940	79.15%	841	993	84.69%	901	1,081	83.35%
Chili	685	901	76.03%	815	930	87.63%	486	621	78.26%
Clarkson	157	213	73.71%	152	184	82.61%	68	88	77.27%
East Rochester	135	180	75.00%	128	168	76.19%	107	145	73.79%
Gates	583	857	68.03%	523	697	75.04%	508	702	72.36%
Greece	2,110	2,919	72.29%	2,629	3,248	80.94%	1,898	2,453	77.37%
Hamlin	210	296	70.95%	218	268	81.34%	107	139	76.98%
Henrietta	765	1,040	73.56%	792	1,003	78.96%	662	826	80.15%
Irondequoit	1,205	1,577	76.41%	1,454	1,754	82.90%	1,200	1,526	78.64%
Mendon	328	378	86.77%	290	337	86.05%	190	221	85.97%
Ogden	573	732	78.28%	536	650	82.46%	343	412	83.25%
Parma	492	628	78.34%	460	560	82.14%	279	341	81.82%
Penfield	1,080	1,326	81.45%	1,268	1,461	86.79%	1,002	1,207	83.02%
Perinton	1,425	1,693	84.17%	1,550	1,745	88.83%	1,355	1,594	85.01%
Pittsford	870	1,040	83.65%	832	931	89.37%	897	1,043	86.00%
Riga	166	231	71.86%	152	202	75.25%	113	133	84.96%
Rush	126	149	84.56%	140	161	86.96%	110	128	85.94%
Sweden	244	327	74.62%	283	334	84.73%	158	196	80.61%
Webster	1,330	1,668	79.74%	1,413	1,668	84.71%	1,104	1,318	83.76%
Wheatland	129	161	80.12%	145	176	82.39%	59	92	64.13%
TOWNS TOTAL:	13,357	17,256	77.40%	14,621	17,470	83.69%	11,547	14,266	80.94%
GRAND TOTAL:	15,297	20,261	75.50%	16,607	20,242	82.04%	12,890	16,234	79.40%

BLANK TURNOUT - TOTAL AND GENDER 2012 GENERAL ELECTION

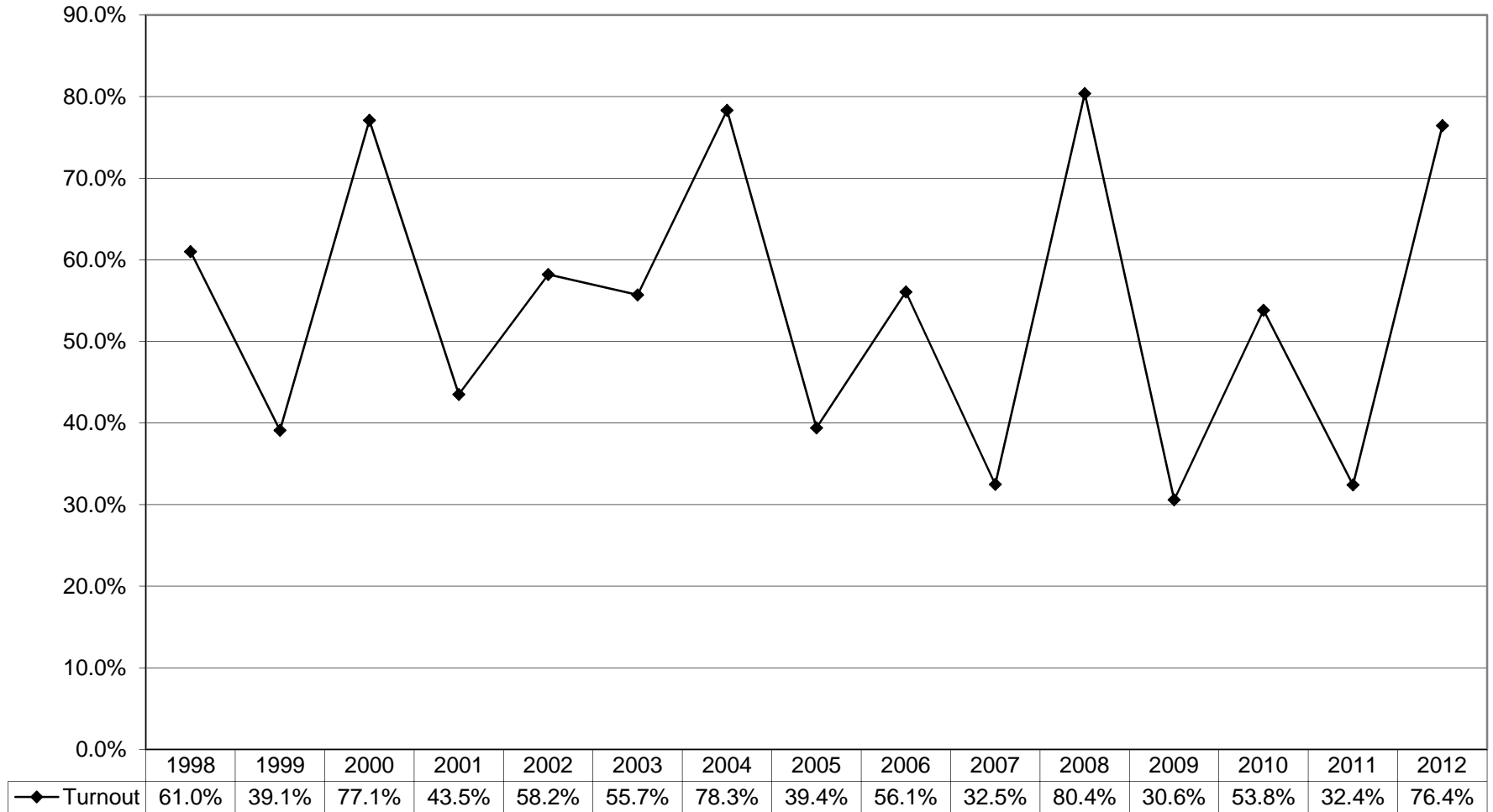


BLANKS TURNOUT BY AGE GROUP 2012 GENERAL ELECTION



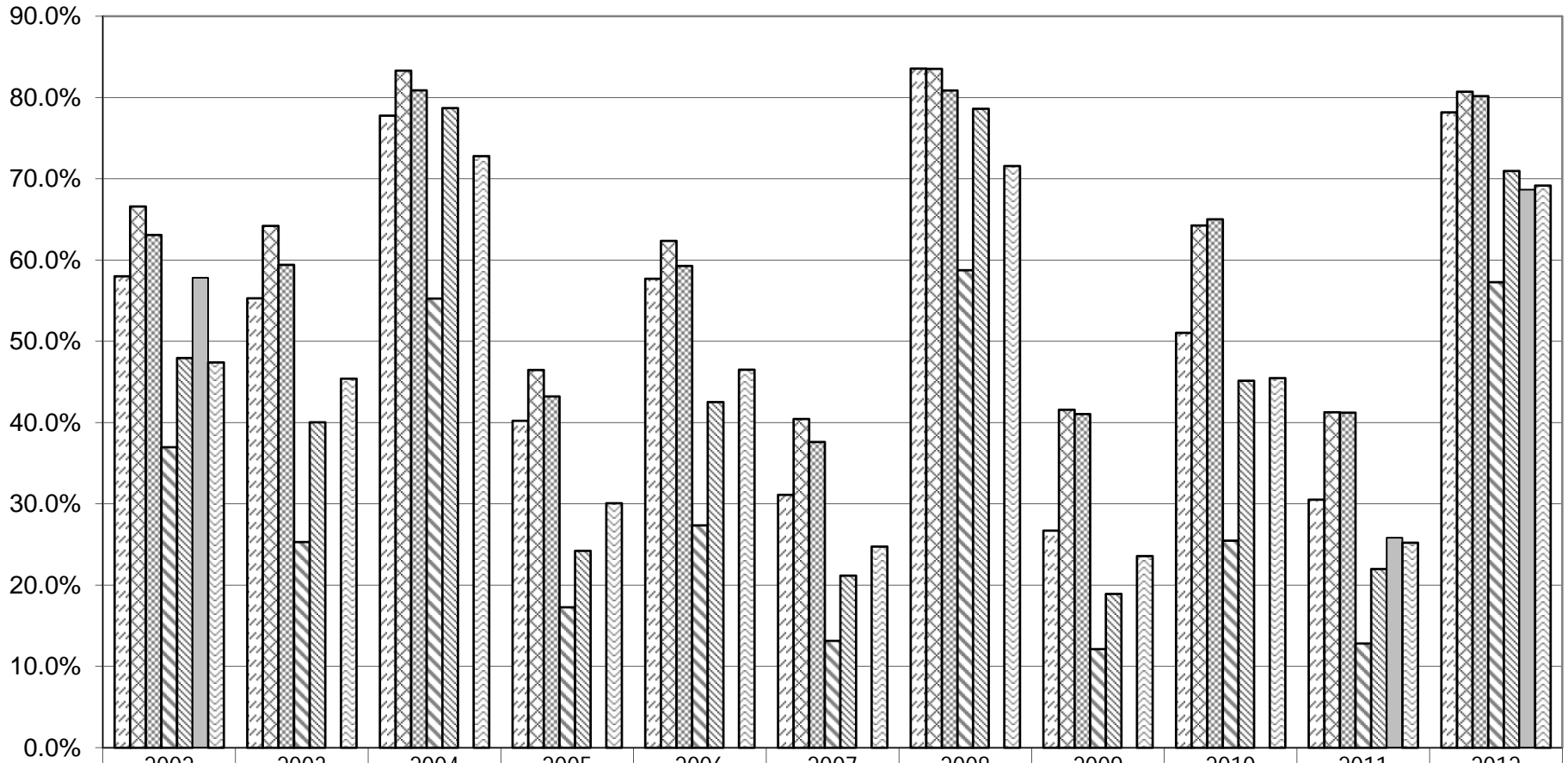
HISTORIC DATA

VOTER TURNOUT FOR THE GENERAL ELECTION 1998 Through 2012



VOTER TURNOUT BY PARTY

2002 Through 2012 General Elections



	2002	2003	2004	2005	2006	2007	2008	2009	2010	2011	2012
Democrats	58.0%	55.3%	77.8%	40.2%	57.7%	31.1%	83.6%	26.7%	51.0%	30.5%	78.2%
Republicans	66.6%	64.2%	83.3%	46.5%	62.4%	40.4%	83.5%	41.6%	64.3%	41.3%	80.7%
Conservative	63.1%	59.4%	80.9%	43.2%	59.3%	37.6%	80.9%	41.1%	65.0%	41.2%	80.2%
Working Families	37.0%	25.3%	55.3%	17.3%	27.4%	13.2%	58.8%	12.1%	25.5%	12.8%	57.3%
Independence	47.9%	40.0%	78.7%	24.2%	42.5%	21.2%	78.6%	18.9%	45.2%	22.0%	71.0%
Green	57.8%				Party Not	Constituted				25.8%	68.7%
Blanks	47.4%	45.4%	72.8%	30.1%	46.5%	24.7%	71.6%	23.6%	45.5%	25.2%	69.2%