



VOTER TURNOUT SUMMARY REPORT 2013 GENERAL ELECTION

Monroe County Board of Elections
39 West Main Street, Rochester, New York 14614

January 13, 2014

Peter M. Quinn
Commissioner of Elections

Thomas F. Ferrarese
Commissioner of Elections

CONTENTS DESCRIPTION

General Summary.....	Page 1
Democratic Summary.....	Page 12
Republican Summary	Page 18
Conservative Summary	Page 24
Working Families Summary.....	Page 30
Independence Summary.....	Page 36
Green Summary.....	Page 42
Blank Summary.....	Page 48
Historical Data.....	Page 54

GENERAL SUMMARY

2013 GENERAL ELECTION
VOTER TURNOUT BY GENDER

LT/LD SUMMARY

LEGISLATIVE DISTRICT OR TOWN	TOTAL VOTERS			MALES			FEMALES		
	VOTED	REGISTERED	TURNOUT	VOTED	REGISTERED	TURNOUT	VOTED	REGISTERED	TURNOUT
CITY									
Leg. Dist. 07	499	1,158	43.09%	230	518	44.40%	269	640	42.03%
Leg. Dist. 16	179	596	30.03%	71	205	34.63%	108	391	27.62%
Leg. Dist. 21	4,340	12,305	35.27%	1,886	5,231	36.05%	2,454	7,074	34.69%
Leg. Dist. 22	2,908	11,209	25.94%	1,147	4,657	24.63%	1,761	6,552	26.88%
Leg. Dist. 23	5,337	11,882	44.92%	2,780	5,829	47.69%	2,557	6,053	42.24%
Leg. Dist. 24	3,098	7,602	40.75%	1,479	3,564	41.50%	1,619	4,038	40.09%
Leg. Dist. 25	3,898	11,083	35.17%	1,696	4,837	35.06%	2,202	6,246	35.25%
Leg. Dist. 26	2,896	8,004	36.18%	1,276	3,369	37.87%	1,620	4,635	34.95%
Leg. Dist. 27	5,355	14,469	37.01%	2,141	6,018	35.58%	3,214	8,451	38.03%
Leg. Dist. 28	2,770	10,226	27.09%	1,195	4,197	28.47%	1,575	6,029	26.12%
Leg. Dist. 29	3,264	11,213	29.11%	1,377	4,668	29.50%	1,887	6,545	28.83%
CITY TOTAL:	34,544	99,747	34.63%	15,278	43,093	35.45%	19,266	56,654	34.01%
TOWNS									
Brighton	6,685	21,595	30.96%	3,139	9,598	32.70%	3,546	11,997	29.56%
Chili	4,773	18,678	25.55%	2,439	8,769	27.81%	2,334	9,909	23.55%
Clarkson	1,120	3,837	29.19%	589	1,824	32.29%	531	2,013	26.38%
East Rochester	1,245	3,678	33.85%	606	1,676	36.16%	639	2,002	31.92%
Gates	4,811	17,587	27.36%	2,296	7,872	29.17%	2,515	9,715	25.89%
Greece	19,785	60,951	32.46%	9,766	27,636	35.34%	10,019	33,315	30.07%
Hamlin	2,121	5,214	40.68%	1,107	2,519	43.95%	1,014	2,695	37.63%
Henrietta	8,331	21,886	38.07%	4,039	10,209	39.56%	4,292	11,677	36.76%
Irondequoit	12,350	33,879	36.45%	5,836	15,010	38.88%	6,514	18,869	34.52%
Mendon	2,040	6,447	31.64%	1,056	3,131	33.73%	984	3,316	29.67%
Ogden	2,932	12,593	23.28%	1,530	5,864	26.09%	1,402	6,729	20.84%
Parma	3,028	10,198	29.69%	1,585	4,892	32.40%	1,443	5,306	27.20%
Penfield	7,449	25,224	29.53%	3,732	11,699	31.90%	3,717	13,525	27.48%
Perinton	8,685	32,786	26.49%	4,455	15,208	29.29%	4,230	17,578	24.06%
Pittsford	6,520	19,358	33.68%	3,265	9,018	36.21%	3,255	10,340	31.48%
Riga	1,611	3,873	41.60%	817	1,839	44.43%	794	2,034	39.04%
Rush	1,311	2,545	51.51%	656	1,239	52.95%	655	1,306	50.15%
Sweden	1,457	6,128	23.78%	746	2,838	26.29%	711	3,290	21.61%
Webster	6,855	28,435	24.11%	3,575	13,141	27.20%	3,280	15,294	21.45%
Wheatland	807	3,178	25.39%	426	1,489	28.61%	381	1,689	22.56%
TOWNS TOTAL:	103,916	338,070	30.74%	51,660	155,471	33.23%	52,256	182,599	28.62%
GRAND TOTAL:	138,460	437,817	31.63%	66,938	198,564	33.71%	71,522	239,253	29.89%

2013 GENERAL ELECTION
VOTER TURNOUT BY PARTY

LT/LD SUMMARY
Part 1 of 2

LEGISLATIVE DISTRICT OR TOWN	DEMOCRAT			REPUBLICAN			CONSERVATIVE			WORKING FAMILIES		
	VOTED	REGISTERED	TURNOUT	VOTED	REGISTERED	TURNOUT	VOTED	REGISTERED	TURNOUT	VOTED	REGISTERED	TURNOUT
CITY												
Leg. Dist. 07	202	471	42.89%	144	310	46.45%	16	25	64.00%	0	5	0.00%
Leg. Dist. 16	115	345	33.33%	27	89	30.34%	3	6	50.00%	1	8	12.50%
Leg. Dist. 21	2,880	7,791	36.97%	608	1,420	42.82%	32	88	36.36%	21	71	29.58%
Leg. Dist. 22	2,453	8,339	29.42%	160	621	25.76%	17	56	30.36%	12	103	11.65%
Leg. Dist. 23	2,971	6,069	48.95%	993	2,103	47.22%	49	113	43.36%	19	43	44.19%
Leg. Dist. 24	1,900	4,192	45.32%	476	1,110	42.88%	25	54	46.30%	15	42	35.71%
Leg. Dist. 25	3,133	8,179	38.31%	253	742	34.10%	23	56	41.07%	10	55	18.18%
Leg. Dist. 26	1,429	3,951	36.17%	755	1,686	44.78%	80	160	50.00%	7	44	15.91%
Leg. Dist. 27	4,255	10,655	39.93%	417	1,076	38.75%	38	96	39.58%	18	85	21.18%
Leg. Dist. 28	1,933	6,654	29.05%	389	1,126	34.55%	36	92	39.13%	14	95	14.74%
Leg. Dist. 29	2,404	7,582	31.71%	402	1,162	34.60%	36	114	31.58%	8	75	10.67%
CITY TOTAL:	23,675	64,228	36.86%	4,624	11,445	40.40%	355	860	41.28%	125	626	19.97%
TOWNS												
Brighton	3,400	9,800	34.69%	1,792	5,388	33.26%	64	219	29.22%	11	33	33.33%
Chili	1,347	5,900	22.83%	2,230	6,811	32.74%	171	457	37.42%	9	45	20.00%
Clarkson	260	974	26.69%	612	1,629	37.57%	37	119	31.09%	0	11	0.00%
East Rochester	376	1,258	29.89%	494	1,090	45.32%	27	81	33.33%	1	18	5.56%
Gates	1,646	6,612	24.89%	2,073	5,515	37.59%	143	393	36.39%	9	74	12.16%
Greece	5,594	19,205	29.13%	8,975	21,633	41.49%	656	1,596	41.10%	36	202	17.82%
Hamlin	386	1,160	33.28%	1,241	2,301	53.93%	52	138	37.68%	5	19	26.32%
Henrietta	2,646	7,920	33.41%	3,558	7,121	49.96%	225	472	47.67%	10	50	20.00%
Irondequoit	4,855	13,141	36.95%	4,165	9,679	43.03%	295	690	42.75%	11	83	13.25%
Mendon	523	1,728	30.27%	993	2,665	37.26%	40	120	33.33%	3	9	33.33%
Ogden	659	3,230	20.40%	1,519	5,105	29.76%	113	378	29.89%	6	41	14.63%
Parma	588	2,426	24.24%	1,613	4,202	38.39%	100	268	37.31%	8	48	16.67%
Penfield	2,253	7,693	29.29%	3,225	9,133	35.31%	154	437	35.24%	5	41	12.20%
Perinton	2,436	9,759	24.96%	4,042	12,496	32.35%	150	468	32.05%	6	56	10.71%
Pittsford	2,181	6,130	35.58%	2,837	7,279	38.98%	83	201	41.29%	4	13	30.77%
Riga	318	842	37.77%	877	1,751	50.09%	49	104	47.12%	2	13	15.38%
Rush	349	670	52.09%	604	1,031	58.58%	29	57	50.88%	2	10	20.00%
Sweden	400	1,777	22.51%	695	2,306	30.14%	41	134	30.60%	1	26	3.85%
Webster	1,898	8,408	22.57%	3,040	10,227	29.73%	177	614	28.83%	5	54	9.26%
Wheatland	215	936	22.97%	404	1,227	32.93%	30	91	32.97%	1	7	14.29%
TOWNS TOTAL:	32,330	109,569	29.51%	44,989	118,589	37.94%	2,636	7,037	37.46%	135	853	15.83%
GRAND TOTAL:	56,005	173,797	32.22%	49,613	130,034	38.15%	2,991	7,897	37.88%	260	1,479	17.58%

2013 GENERAL ELECTION
VOTER TURNOUT BY PARTY

LT/LD SUMMARY
Part 2 of 2

LEGISLATIVE DISTRICT OR TOWN	INDEPENDENCE			GREEN			BLANK		
	VOTED	REGISTERED	TURNOUT	VOTED	REGISTERED	TURNOUT	VOTED	REGISTERED	TURNOUT
CITY									
Leg. Dist. 07	29	68	42.65%	1	5	20.00%	107	274	39.05%
Leg. Dist. 16	10	23	43.48%	0	1	0.00%	23	124	18.55%
Leg. Dist. 21	136	457	29.76%	21	51	41.18%	642	2,427	26.45%
Leg. Dist. 22	35	250	14.00%	6	20	30.00%	225	1,820	12.36%
Leg. Dist. 23	201	606	33.17%	52	94	55.32%	1,052	2,854	36.86%
Leg. Dist. 24	97	366	26.50%	40	83	48.19%	545	1,755	31.05%
Leg. Dist. 25	81	283	28.62%	18	42	42.86%	380	1,726	22.02%
Leg. Dist. 26	116	375	30.93%	3	12	25.00%	506	1,776	28.49%
Leg. Dist. 27	114	427	26.70%	13	32	40.63%	500	2,098	23.83%
Leg. Dist. 28	67	308	21.75%	3	22	13.64%	328	1,929	17.00%
Leg. Dist. 29	79	310	25.48%	4	16	25.00%	331	1,954	16.94%
CITY TOTAL:	965	3,473	27.79%	161	378	42.59%	4,639	18,737	24.76%
TOWNS									
Brighton	166	964	17.22%	25	86	29.07%	1,227	5,105	24.04%
Chili	144	826	17.43%	8	36	22.22%	864	4,603	18.77%
Clarkson	31	208	14.90%	0	2	0.00%	180	894	20.13%
East Rochester	64	257	24.90%	3	13	23.08%	280	961	29.14%
Gates	151	834	18.11%	6	31	19.35%	783	4,128	18.97%
Greece	684	2,927	23.37%	23	106	21.70%	3,817	15,282	24.98%
Hamlin	82	281	29.18%	3	19	15.79%	352	1,296	27.16%
Henrietta	296	1,036	28.57%	12	35	34.29%	1,584	5,252	30.16%
Irondequoit	458	1,702	26.91%	28	102	27.45%	2,538	8,482	29.92%
Mendon	72	349	20.63%	2	20	10.00%	407	1,556	26.16%
Ogden	83	641	12.95%	1	22	4.55%	551	3,176	17.35%
Parma	102	540	18.89%	1	12	8.33%	616	2,702	22.80%
Penfield	238	1,331	17.88%	7	31	22.58%	1,567	6,558	23.89%
Perinton	253	1,547	16.35%	11	86	12.79%	1,787	8,374	21.34%
Pittsford	200	849	23.56%	6	35	17.14%	1,209	4,851	24.92%
Riga	65	218	29.82%	2	6	33.33%	298	939	31.74%
Rush	45	108	41.67%	3	6	50.00%	279	663	42.08%
Sweden	47	339	13.86%	7	19	36.84%	266	1,527	17.42%
Webster	232	1,513	15.33%	7	41	17.07%	1,496	7,578	19.74%
Wheatland	29	164	17.68%	1	6	16.67%	127	747	17.00%
TOWNS TOTAL:	3,442	16,634	20.69%	156	714	21.85%	20,228	84,674	23.89%
GRAND TOTAL:	4,407	20,107	21.92%	317	1,092	29.03%	24,867	103,411	24.05%

2013 GENERAL ELECTION
VOTER TURNOUT BY AGE

LT/LD SUMMARY
Part 1 of 2

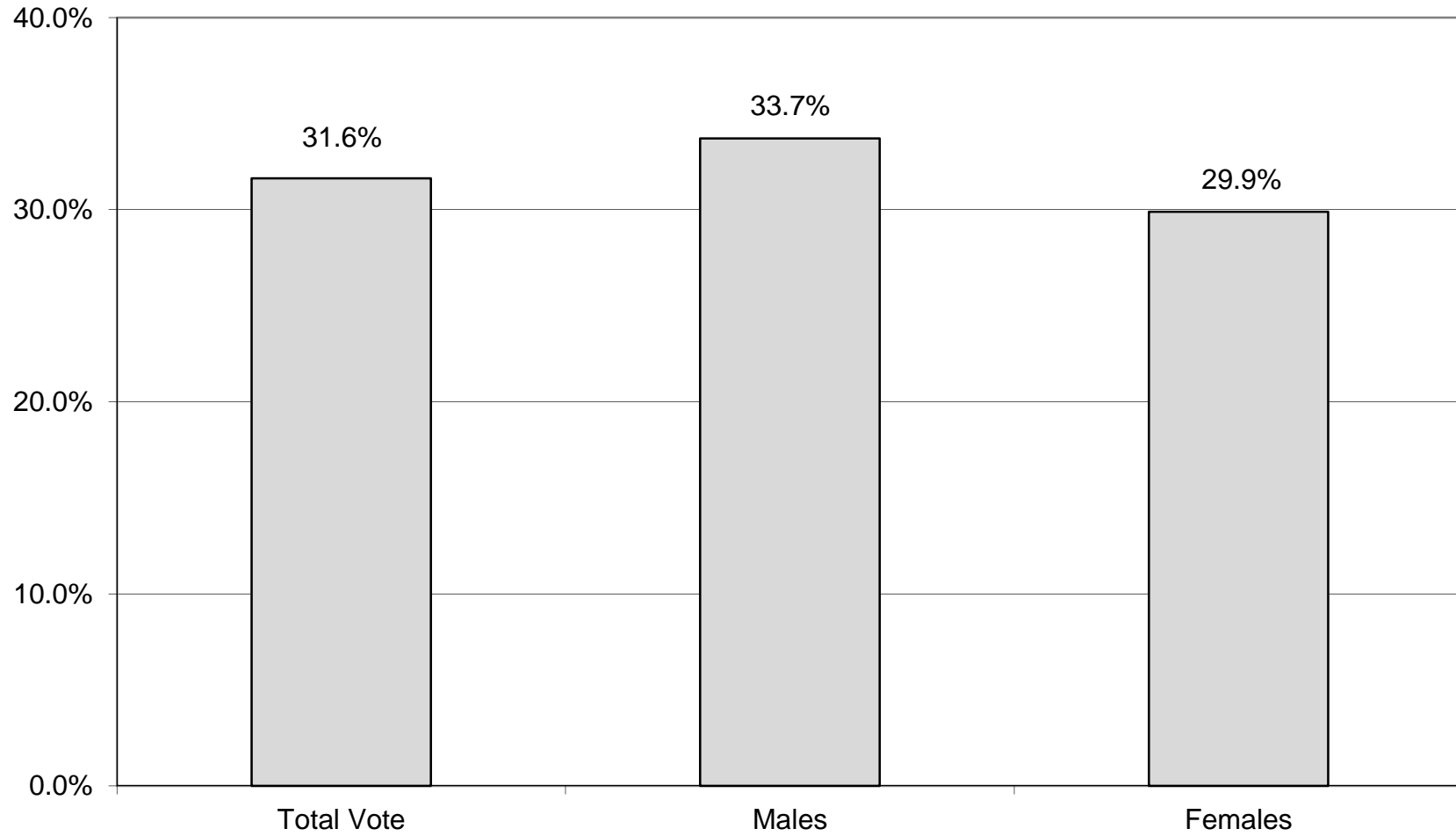
LEGISLATIVE DISTRICT OR TOWN	NDOB			18-24			25-34			35-44		
	VOTED	REGISTERED	TURNOUT	VOTED	REGISTERED	TURNOUT	VOTED	REGISTERED	TURNOUT	VOTED	REGISTERED	TURNOUT
Leg. Dist. 07	2	15	13.33%	3	61	4.92%	28	150	18.67%	34	123	27.64%
Leg. Dist. 16	3	11	27.27%	3	63	4.76%	17	128	13.28%	22	99	22.22%
Leg. Dist. 21	49	101	48.51%	123	1,237	9.94%	563	2,658	21.18%	699	2,282	30.63%
Leg. Dist. 22	20	41	48.78%	146	1,436	10.17%	300	2,250	13.33%	359	1,918	18.72%
Leg. Dist. 23	61	91	67.03%	105	834	12.59%	809	3,209	25.21%	714	1,781	40.09%
Leg. Dist. 24	27	53	50.94%	76	813	9.35%	518	1,931	26.83%	498	1,181	42.17%
Leg. Dist. 25	38	77	49.35%	137	1,149	11.92%	487	2,364	20.60%	512	1,771	28.91%
Leg. Dist. 26	27	65	41.54%	67	609	11.00%	290	1,516	19.13%	403	1,347	29.92%
Leg. Dist. 27	42	75	56.00%	224	1,654	13.54%	542	2,831	19.15%	775	2,375	32.63%
Leg. Dist. 28	25	60	41.67%	121	1,183	10.23%	283	2,100	13.48%	430	1,891	22.74%
Leg. Dist. 29	30	73	41.10%	103	1,248	8.25%	287	2,034	14.11%	421	1,853	22.72%
CITY TOTAL:	324	662	48.94%	1,108	10,287	10.77%	4,124	21,171	19.48%	4,867	16,621	29.28%
Brighton	103	223	46.19%	108	1,514	7.13%	396	3,111	12.73%	617	3,055	20.20%
Chili	88	217	40.55%	90	1,394	6.46%	259	2,838	9.13%	399	2,838	14.06%
Clarkson	2	6	33.33%	18	255	7.06%	48	468	10.26%	111	645	17.21%
East Rochester	28	63	44.44%	30	296	10.14%	87	630	13.81%	147	558	26.34%
Gates	34	85	40.00%	77	1,095	7.03%	222	2,642	8.40%	361	2,525	14.30%
Greece	324	717	45.19%	367	4,548	8.07%	931	9,045	10.29%	1,407	8,286	16.98%
Hamlin	9	20	45.00%	59	401	14.71%	120	717	16.74%	235	769	30.56%
Henrietta	35	67	52.24%	242	1,725	14.03%	499	3,316	15.05%	855	3,394	25.19%
Irondequoit	195	454	42.95%	171	2,241	7.63%	749	5,102	14.68%	1,176	4,923	23.89%
Mendon	6	14	42.86%	36	668	5.39%	45	666	6.76%	169	849	19.91%
Ogden	30	85	35.29%	64	932	6.87%	151	1,769	8.54%	253	1,951	12.97%
Parma	15	43	34.88%	39	798	4.89%	132	1,365	9.67%	237	1,471	16.11%
Penfield	80	224	35.71%	124	1,738	7.13%	272	3,018	9.01%	589	3,651	16.13%
Perinton	20	80	25.00%	132	2,860	4.62%	297	3,759	7.90%	659	4,538	14.52%
Pittsford	38	91	41.76%	80	1,558	5.13%	170	1,862	9.13%	557	2,661	20.93%
Riga	5	16	31.25%	52	301	17.28%	93	496	18.75%	145	506	28.66%
Rush	32	49	65.31%	31	189	16.40%	52	266	19.55%	92	267	34.46%
Sweden	7	31	22.58%	18	481	3.74%	61	886	6.88%	110	886	12.42%
Webster	89	249	35.74%	100	1,855	5.39%	262	3,361	7.80%	538	4,226	12.73%
Wheatland	5	11	45.45%	15	261	5.75%	37	488	7.58%	63	391	16.11%
TOWNS TOTAL:	1,145	2,745	41.71%	1,853	25,110	7.38%	4,883	45,805	10.66%	8,720	48,390	18.02%
GRAND TOTAL:	1,469	3,407	43.12%	2,961	35,397	8.37%	9,007	66,976	13.45%	13,587	65,011	20.90%

2013 GENERAL ELECTION
VOTER TURNOUT BY AGE

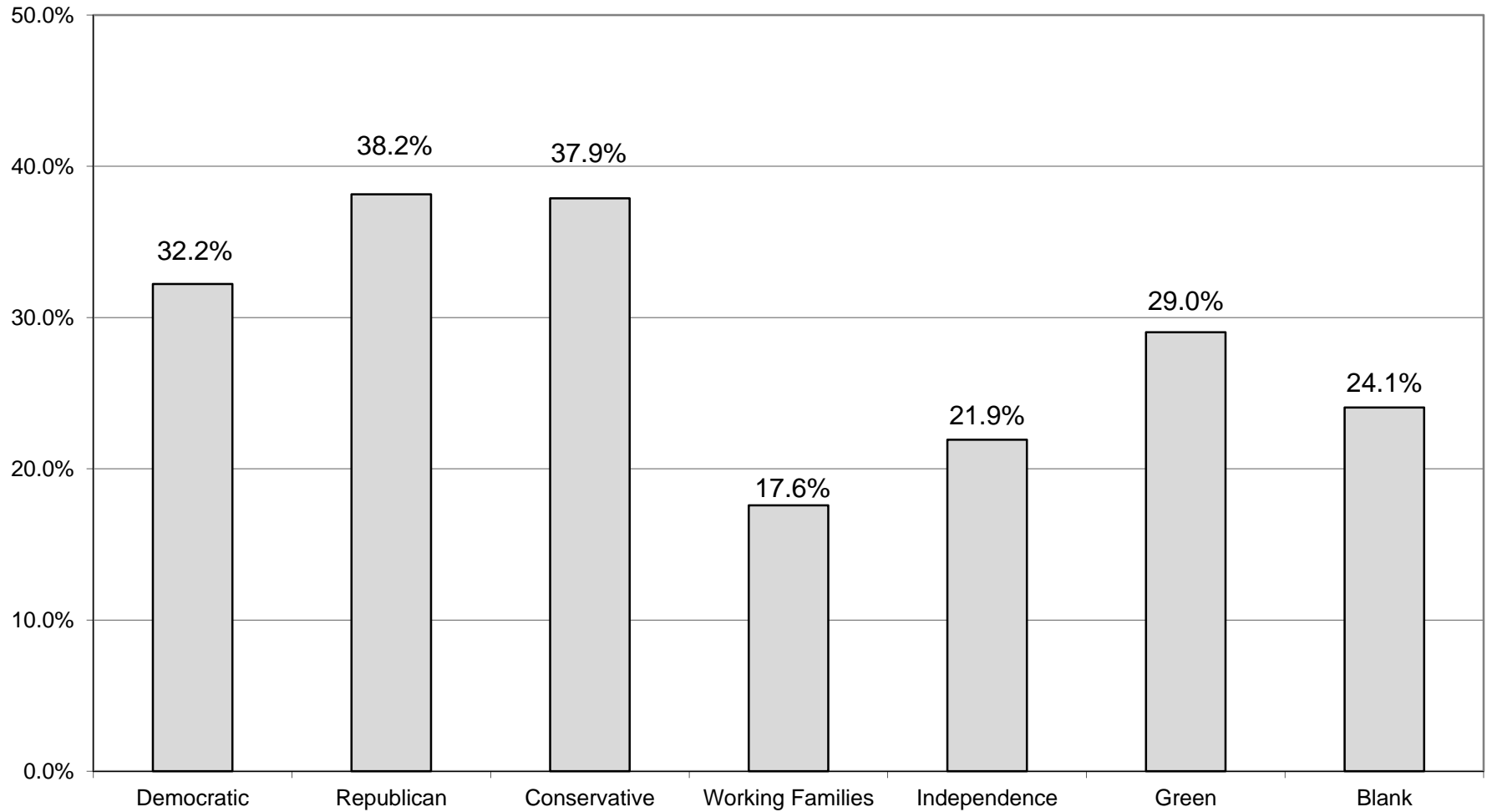
LT/LD SUMMARY
Part 2 of 2

LEGISLATIVE DISTRICT OR TOWN	45-54			55-64			65+		
	VOTED	REGISTERED	TURNOUT	VOTED	REGISTERED	TURNOUT	VOTED	REGISTERED	TURNOUT
Leg. Dist. 07	72	193	37.31%	182	298	61.07%	178	318	55.97%
Leg. Dist. 16	47	120	39.17%	48	92	52.17%	39	83	46.99%
Leg. Dist. 21	900	2,295	39.22%	1,032	1,981	52.09%	974	1,751	55.63%
Leg. Dist. 22	643	2,144	29.99%	744	1,759	42.30%	696	1,661	41.90%
Leg. Dist. 23	984	1,886	52.17%	1,251	2,038	61.38%	1,413	2,043	69.16%
Leg. Dist. 24	569	1,184	48.06%	739	1,263	58.51%	671	1,177	57.01%
Leg. Dist. 25	801	2,051	39.05%	868	1,759	49.35%	1,055	1,912	55.18%
Leg. Dist. 26	595	1,553	38.31%	766	1,529	50.10%	748	1,385	54.01%
Leg. Dist. 27	1,165	2,783	41.86%	1,307	2,422	53.96%	1,300	2,329	55.82%
Leg. Dist. 28	631	2,031	31.07%	717	1,726	41.54%	563	1,235	45.59%
Leg. Dist. 29	638	2,073	30.78%	896	1,977	45.32%	889	1,955	45.47%
CITY TOTAL:	7,045	18,313	38.47%	8,550	16,844	50.76%	8,526	15,849	53.80%
Brighton	1,042	3,766	27.67%	1,574	3,984	39.51%	2,845	5,942	47.88%
Chili	827	3,677	22.49%	1,279	3,562	35.91%	1,831	4,152	44.10%
Clarkson	264	901	29.30%	307	775	39.61%	370	787	47.01%
East Rochester	241	730	33.01%	305	684	44.59%	407	717	56.76%
Gates	799	3,328	24.01%	1,089	3,085	35.30%	2,229	4,827	46.18%
Greece	3,382	11,214	30.16%	5,398	12,214	44.20%	7,976	14,927	53.43%
Hamlin	467	1,153	40.50%	614	1,142	53.77%	617	1,012	60.97%
Henrietta	1,618	4,187	38.64%	2,073	4,093	50.65%	3,009	5,104	58.95%
Irondequoit	2,241	6,255	35.83%	3,263	6,613	49.34%	4,555	8,291	54.94%
Mendon	488	1,611	30.29%	595	1,353	43.98%	701	1,286	54.51%
Ogden	523	2,722	19.21%	841	2,570	32.72%	1,070	2,564	41.73%
Parma	603	2,118	28.47%	871	2,158	40.36%	1,131	2,245	50.38%
Penfield	1,387	5,219	26.58%	2,000	5,114	39.11%	2,997	6,260	47.88%
Perinton	1,508	6,668	22.62%	2,211	6,457	34.24%	3,858	8,424	45.80%
Pittsford	1,242	4,091	30.36%	1,597	3,799	42.04%	2,836	5,296	53.55%
Riga	357	890	40.11%	440	838	52.51%	519	826	62.83%
Rush	295	563	52.40%	369	595	62.02%	440	616	71.43%
Sweden	266	1,209	22.00%	410	1,271	32.26%	585	1,364	42.89%
Webster	1,195	6,029	19.82%	1,810	5,640	32.09%	2,861	7,075	40.44%
Wheatland	127	621	20.45%	246	695	35.40%	314	711	44.16%
TOWNS TOTAL:	18,872	66,952	28.19%	27,292	66,642	40.95%	41,151	82,426	49.92%
GRAND TOTAL:	25,917	85,265	30.40%	35,842	83,486	42.93%	49,677	98,275	50.55%

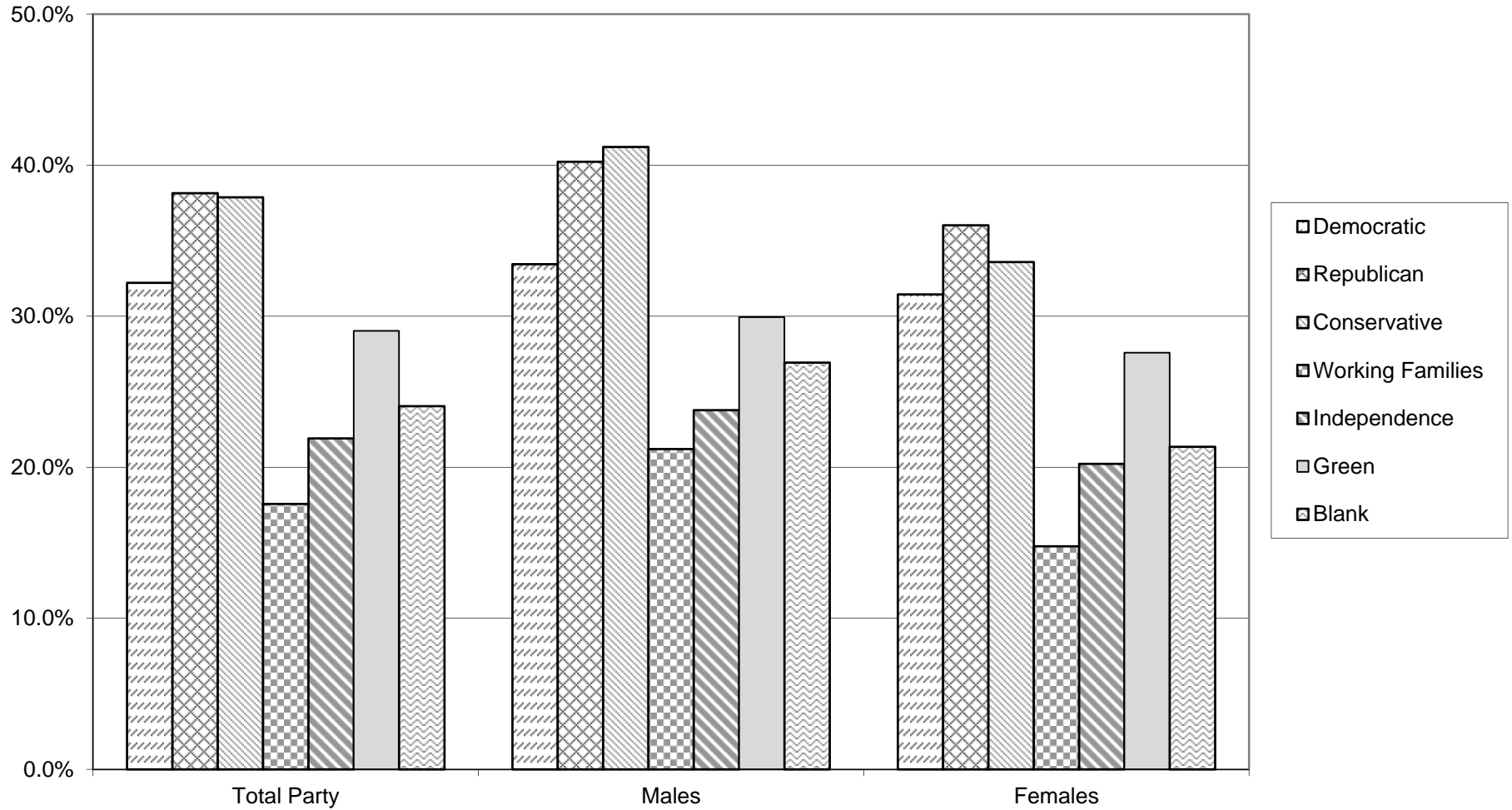
VOTER TURNOUT - TOTAL AND BY GENDER 2013 GENERAL ELECTION



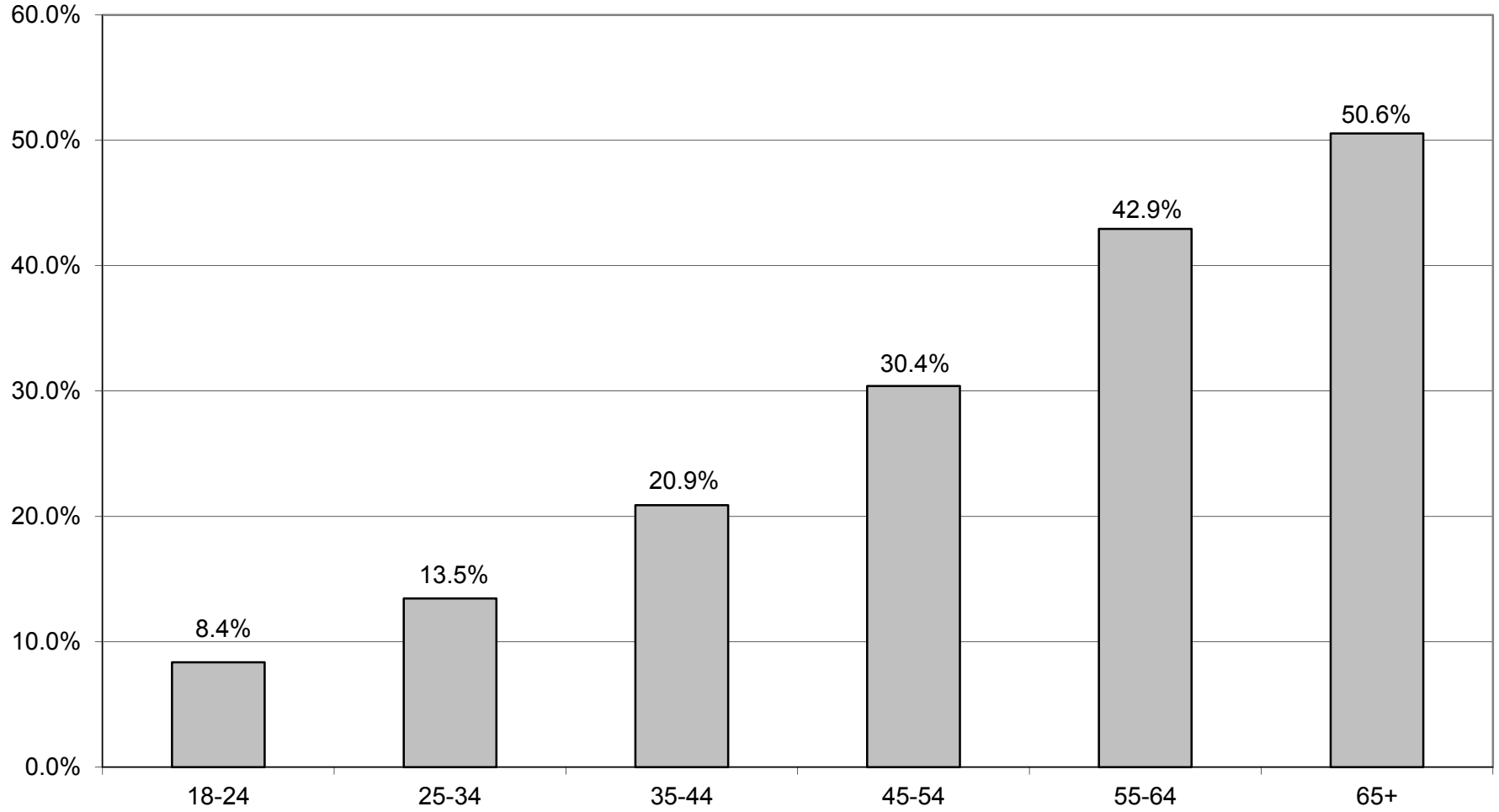
VOTER TURNOUT BY PARTY 2013 GENERAL ELECTION



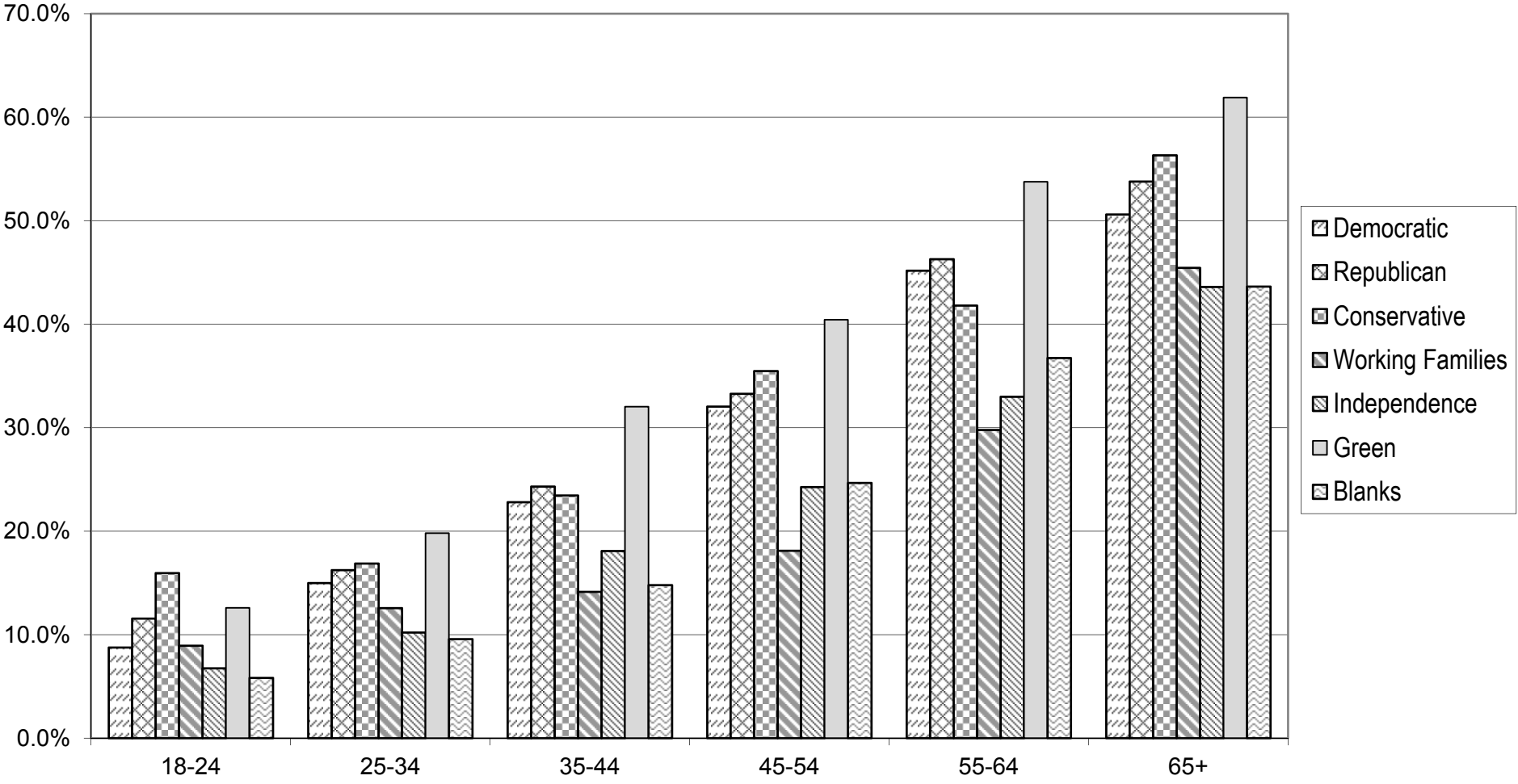
COMPARISON OF TOTAL AND GENDER TURNOUT 2013 GENERAL ELECTION



VOTER TURNOUT BY AGE GROUP 2013 GENERAL ELECTION



COMPARISON OF TURNOUT BY AGE GROUP 2013 GENERAL ELECTION



DEMOCRATIC SUMMARY

2013 GENERAL ELECTION
DEMOCRATIC TURNOUT BY GENDER

LT/LD SUMMARY

LEGISLATIVE DISTRICT OR TOWN	TOTAL VOTERS			MALES			FEMALES		
	VOTED	REGISTERED	TURNOUT	VOTED	REGISTERED	TURNOUT	VOTED	REGISTERED	TURNOUT
CITY									
Leg. Dist. 07	202	471	42.89%	76	179	42.46%	126	292	43.15%
Leg. Dist. 16	115	345	33.33%	39	100	39.00%	76	245	31.02%
Leg. Dist. 21	2,880	7,791	36.97%	1,107	3,082	35.92%	1,773	4,709	37.65%
Leg. Dist. 22	2,453	8,339	29.42%	908	3,387	26.81%	1,545	4,952	31.20%
Leg. Dist. 23	2,971	6,069	48.95%	1,391	2,695	51.61%	1,580	3,374	46.83%
Leg. Dist. 24	1,900	4,192	45.32%	810	1,772	45.71%	1,090	2,420	45.04%
Leg. Dist. 25	3,133	8,179	38.31%	1,271	3,369	37.73%	1,862	4,810	38.71%
Leg. Dist. 26	1,429	3,951	36.17%	540	1,417	38.11%	889	2,534	35.08%
Leg. Dist. 27	4,255	10,655	39.93%	1,556	4,129	37.68%	2,699	6,526	41.36%
Leg. Dist. 28	1,933	6,654	29.05%	761	2,548	29.87%	1,172	4,106	28.54%
Leg. Dist. 29	2,404	7,582	31.71%	918	2,942	31.20%	1,486	4,640	32.03%
CITY TOTAL:	23,675	64,228	36.86%	9,377	25,620	36.60%	14,298	38,608	37.03%
TOWNS									
Brighton	3,400	9,800	34.69%	1,367	3,772	36.24%	2,033	6,028	33.73%
Chili	1,347	5,900	22.83%	577	2,390	24.14%	770	3,510	21.94%
Clarkson	260	974	26.69%	112	385	29.09%	148	589	25.13%
East Rochester	376	1,258	29.89%	153	499	30.66%	223	759	29.38%
Gates	1,646	6,612	24.89%	657	2,557	25.69%	989	4,055	24.39%
Greece	5,594	19,205	29.13%	2,274	7,238	31.42%	3,320	11,967	27.74%
Hamlin	386	1,160	33.28%	158	457	34.57%	228	703	32.43%
Henrietta	2,646	7,920	33.41%	1,061	3,139	33.80%	1,585	4,781	33.15%
Irondequoit	4,855	13,141	36.95%	1,927	4,877	39.51%	2,928	8,264	35.43%
Mendon	523	1,728	30.27%	220	678	32.45%	303	1,050	28.86%
Ogden	659	3,230	20.40%	273	1,227	22.25%	386	2,003	19.27%
Parma	588	2,426	24.24%	256	930	27.53%	332	1,496	22.19%
Penfield	2,253	7,693	29.29%	903	2,891	31.23%	1,350	4,802	28.11%
Perinton	2,436	9,759	24.96%	986	3,618	27.25%	1,450	6,141	23.61%
Pittsford	2,181	6,130	35.58%	922	2,379	38.76%	1,259	3,751	33.56%
Riga	318	842	37.77%	129	325	39.69%	189	517	36.56%
Rush	349	670	52.09%	156	274	56.93%	193	396	48.74%
Sweden	400	1,777	22.51%	171	693	24.68%	229	1,084	21.13%
Webster	1,898	8,408	22.57%	797	3,176	25.09%	1,101	5,232	21.04%
Wheatland	215	936	22.97%	99	373	26.54%	116	563	20.60%
TOWNS TOTAL:	32,330	109,569	29.51%	13,198	41,878	31.52%	19,132	67,691	28.26%
GRAND TOTAL:	56,005	173,797	32.22%	22,575	67,498	33.45%	33,430	106,299	31.45%

2013 GENERAL ELECTION
DEMOCRATIC TURNOUT BY AGE

LT/LD SUMMARY

Part 1 of 2

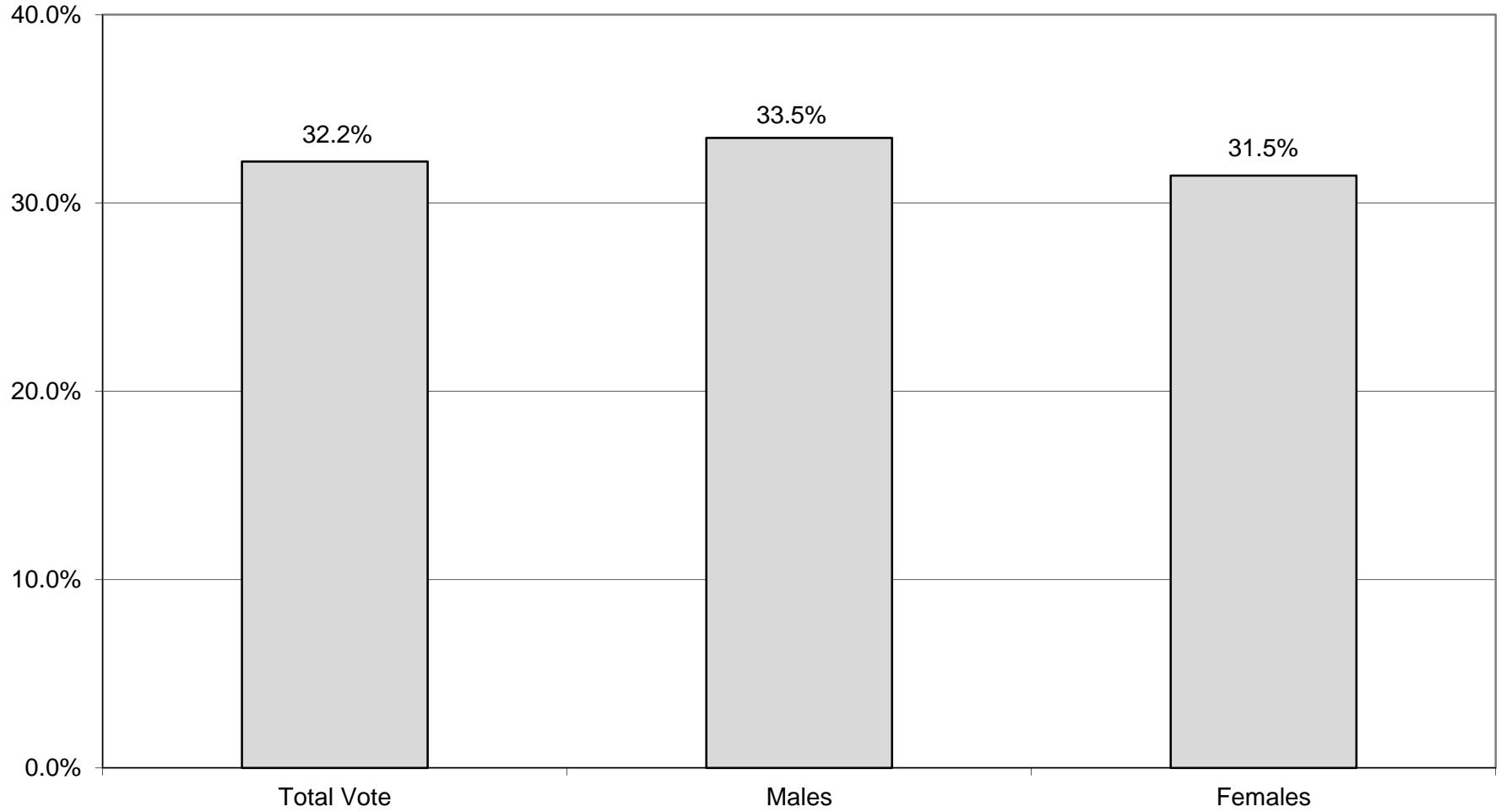
LEGISLATIVE DISTRICT OR TOWN CITY	NDOB			18-24			25-34			35-44		
	VOTED	REGISTERED	TURNOUT	VOTED	REGISTERED	TURNOUT	VOTED	REGISTERED	TURNOUT	VOTED	REGISTERED	TURNOUT
Leg. Dist. 07	1	5	20.00%	1	30	3.33%	11	61	18.03%	15	53	28.30%
Leg. Dist. 16	1	4	25.00%	1	40	2.50%	11	74	14.86%	16	56	28.57%
Leg. Dist. 21	19	37	51.35%	89	796	11.18%	341	1,591	21.43%	478	1,455	32.85%
Leg. Dist. 22	17	27	62.96%	121	964	12.55%	248	1,627	15.24%	297	1,375	21.60%
Leg. Dist. 23	23	36	63.89%	58	407	14.25%	408	1,494	27.31%	358	870	41.15%
Leg. Dist. 24	10	19	52.63%	46	451	10.20%	305	994	30.68%	321	663	48.42%
Leg. Dist. 25	28	46	60.87%	112	825	13.58%	363	1,605	22.62%	399	1,253	31.84%
Leg. Dist. 26	9	17	52.94%	34	340	10.00%	172	812	21.18%	222	694	31.99%
Leg. Dist. 27	24	43	55.81%	172	1,177	14.61%	408	2,004	20.36%	636	1,772	35.89%
Leg. Dist. 28	8	17	47.06%	92	791	11.63%	206	1,366	15.08%	335	1,260	26.59%
Leg. Dist. 29	14	30	46.67%	76	825	9.21%	220	1,327	16.58%	325	1,245	26.10%
CITY TOTAL:	154	281	54.80%	802	6,646	12.07%	2,693	12,955	20.79%	3,402	10,696	31.81%
TOWNS												
Brighton	25	58	43.10%	57	705	8.09%	200	1,378	14.51%	303	1,436	21.10%
Chili	30	68	44.12%	21	394	5.33%	81	986	8.22%	120	914	13.13%
Clarkson	0	3	0.00%	1	58	1.72%	9	134	6.72%	20	164	12.20%
East Rochester	6	23	26.09%	6	104	5.77%	28	219	12.79%	55	226	24.34%
Gates	9	22	40.91%	16	414	3.86%	78	1,043	7.48%	138	981	14.07%
Greece	85	185	45.95%	101	1,554	6.50%	275	3,179	8.65%	374	2,746	13.62%
Hamlin	0	4	0.00%	15	98	15.31%	26	189	13.76%	44	179	24.58%
Henrietta	10	20	50.00%	83	728	11.40%	173	1,295	13.36%	277	1,250	22.16%
Irondequoit	63	137	45.99%	63	958	6.58%	316	2,037	15.51%	487	1,968	24.75%
Mendon	1	2	50.00%	6	207	2.90%	11	196	5.61%	42	240	17.50%
Ogden	10	23	43.48%	14	214	6.54%	34	484	7.02%	53	520	10.19%
Parma	5	11	45.45%	5	214	2.34%	28	350	8.00%	48	342	14.04%
Penfield	20	59	33.90%	31	488	6.35%	96	998	9.62%	188	1,152	16.32%
Perinton	4	25	16.00%	35	941	3.72%	106	1,300	8.15%	207	1,494	13.86%
Pittsford	12	26	46.15%	24	499	4.81%	70	672	10.42%	189	906	20.86%
Riga	1	3	33.33%	5	56	8.93%	22	118	18.64%	28	123	22.76%
Rush	8	12	66.67%	11	60	18.33%	14	88	15.91%	28	66	42.42%
Sweden	2	9	22.22%	3	153	1.96%	17	281	6.05%	22	276	7.97%
Webster	25	84	29.76%	22	518	4.25%	75	1,054	7.12%	134	1,276	10.50%
Wheatland	2	4	50.00%	3	97	3.09%	11	143	7.69%	15	124	12.10%
TOWNS TOTAL:	318	778	40.87%	522	8,460	6.17%	1,670	16,144	10.34%	2,772	16,383	16.92%
GRAND TOTAL:	472	1,059	44.57%	1,324	15,106	8.76%	4,363	29,099	14.99%	6,174	27,079	22.80%

2013 GENERAL ELECTION
DEMOCRATIC TURNOUT BY AGE

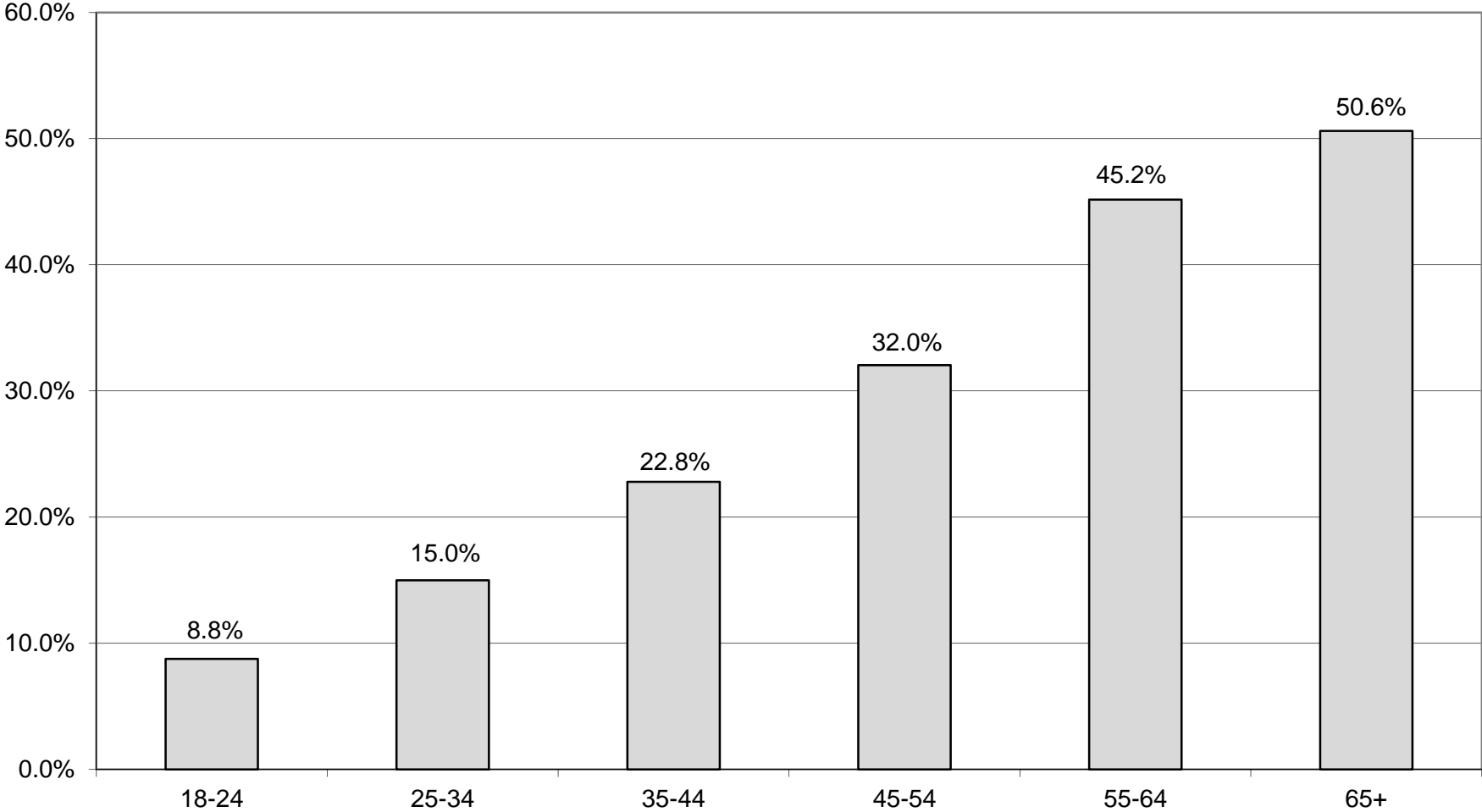
LT/LD SUMMARY
Part 2 of 2

LEGISLATIVE DISTRICT OR TOWN	45-54			55-64			65+		
	VOTED	REGISTERED	TURNOUT	VOTED	REGISTERED	TURNOUT	VOTED	REGISTERED	TURNOUT
CITY									
Leg. Dist. 07	23	71	32.39%	79	122	64.75%	72	129	55.81%
Leg. Dist. 16	33	78	42.31%	31	50	62.00%	22	43	51.16%
Leg. Dist. 21	625	1,503	41.58%	708	1,297	54.59%	620	1,112	55.76%
Leg. Dist. 22	555	1,654	33.56%	631	1,368	46.13%	584	1,324	44.11%
Leg. Dist. 23	537	970	55.36%	725	1,124	64.50%	862	1,168	73.80%
Leg. Dist. 24	357	686	52.04%	475	763	62.25%	386	616	62.66%
Leg. Dist. 25	650	1,584	41.04%	692	1,343	51.53%	889	1,523	58.37%
Leg. Dist. 26	299	769	38.88%	348	691	50.36%	345	628	54.94%
Leg. Dist. 27	985	2,162	45.56%	1,008	1,751	57.57%	1,022	1,746	58.53%
Leg. Dist. 28	448	1,352	33.14%	488	1,115	43.77%	356	753	47.28%
Leg. Dist. 29	479	1,451	33.01%	665	1,352	49.19%	625	1,352	46.23%
CITY TOTAL:	4,991	12,280	40.64%	5,850	10,976	53.30%	5,783	10,394	55.64%
TOWNS									
Brighton	552	1,667	33.11%	849	1,914	44.36%	1,414	2,642	53.52%
Chili	190	1,039	18.29%	375	1,123	33.39%	530	1,376	38.52%
Clarkson	43	192	22.40%	82	202	40.59%	105	221	47.51%
East Rochester	57	235	24.26%	90	223	40.36%	134	228	58.77%
Gates	259	1,149	22.54%	366	1,115	32.83%	780	1,888	41.31%
Greece	836	3,210	26.04%	1,579	3,749	42.12%	2,344	4,582	51.16%
Hamlin	78	227	34.36%	114	237	48.10%	109	226	48.23%
Henrietta	468	1,386	33.77%	654	1,411	46.35%	981	1,830	53.61%
Irondequoit	808	2,280	35.44%	1,338	2,606	51.34%	1,780	3,155	56.42%
Mendon	128	420	30.48%	168	361	46.54%	167	302	55.30%
Ogden	77	588	13.10%	202	682	29.62%	269	719	37.41%
Parma	84	453	18.54%	184	518	35.52%	234	538	43.49%
Penfield	351	1,408	24.93%	647	1,613	40.11%	920	1,975	46.58%
Perinton	390	1,768	22.06%	655	1,913	34.24%	1,039	2,318	44.82%
Pittsford	373	1,163	32.07%	616	1,304	47.24%	897	1,560	57.50%
Riga	61	177	34.46%	97	185	52.43%	104	180	57.78%
Rush	65	124	52.42%	115	170	67.65%	108	150	72.00%
Sweden	62	296	20.95%	107	355	30.14%	187	407	45.95%
Webster	289	1,576	18.34%	519	1,652	31.42%	834	2,248	37.10%
Wheatland	27	162	16.67%	65	174	37.36%	92	232	39.66%
TOWNS TOTAL:	5,198	19,520	26.63%	8,822	21,507	41.02%	13,028	26,777	48.65%
GRAND TOTAL:	10,189	31,800	32.04%	14,672	32,483	45.17%	18,811	37,171	50.61%

DEMOCRATIC TURNOUT - TOTAL AND GENDER 2013 GENERAL ELECTION



DEMOCRATIC TURNOUT BY AGE GROUP 2013 GENERAL ELECTION



REPUBLICAN SUMMARY

2013 GENERAL ELECTION
REPUBLICAN TURNOUT BY GENDER

LT/LD SUMMARY

LEGISLATIVE DISTRICT OR TOWN	TOTAL VOTERS			MALES			FEMALES		
	VOTED	REGISTERED	TURNOUT	VOTED	REGISTERED	TURNOUT	VOTED	REGISTERED	TURNOUT
CITY									
Leg. Dist. 07	144	310	46.45%	71	146	48.63%	73	164	44.51%
Leg. Dist. 16	27	89	30.34%	15	41	36.59%	12	48	25.00%
Leg. Dist. 21	608	1,420	42.82%	325	699	46.49%	283	721	39.25%
Leg. Dist. 22	160	621	25.76%	84	321	26.17%	76	300	25.33%
Leg. Dist. 23	993	2,103	47.22%	580	1,175	49.36%	413	928	44.50%
Leg. Dist. 24	476	1,110	42.88%	250	584	42.81%	226	526	42.97%
Leg. Dist. 25	253	742	34.10%	139	391	35.55%	114	351	32.48%
Leg. Dist. 26	755	1,686	44.78%	377	822	45.86%	378	864	43.75%
Leg. Dist. 27	417	1,076	38.75%	219	548	39.96%	198	528	37.50%
Leg. Dist. 28	389	1,126	34.55%	212	581	36.49%	177	545	32.48%
Leg. Dist. 29	402	1,162	34.60%	204	590	34.58%	198	572	34.62%
CITY TOTAL:	4,624	11,445	40.40%	2,476	5,898	41.98%	2,148	5,547	38.72%
TOWNS									
Brighton	1,792	5,388	33.26%	950	2,671	35.57%	842	2,717	30.99%
Chili	2,230	6,811	32.74%	1,181	3,391	34.83%	1,049	3,420	30.67%
Clarkson	612	1,629	37.57%	331	830	39.88%	281	799	35.17%
East Rochester	494	1,090	45.32%	259	534	48.50%	235	556	42.27%
Gates	2,073	5,515	37.59%	1,044	2,693	38.77%	1,029	2,822	36.46%
Greece	8,975	21,633	41.49%	4,726	10,827	43.65%	4,249	10,806	39.32%
Hamlin	1,241	2,301	53.93%	669	1,201	55.70%	572	1,100	52.00%
Henrietta	3,558	7,121	49.96%	1,843	3,638	50.66%	1,715	3,483	49.24%
Irondequoit	4,165	9,679	43.03%	2,186	4,812	45.43%	1,979	4,867	40.66%
Mendon	993	2,665	37.26%	557	1,429	38.98%	436	1,236	35.28%
Ogden	1,519	5,105	29.76%	832	2,554	32.58%	687	2,551	26.93%
Parma	1,613	4,202	38.39%	871	2,181	39.94%	742	2,021	36.71%
Penfield	3,225	9,133	35.31%	1,739	4,672	37.22%	1,486	4,461	33.31%
Perinton	4,042	12,496	32.35%	2,222	6,362	34.93%	1,820	6,134	29.67%
Pittsford	2,837	7,279	38.98%	1,539	3,729	41.27%	1,298	3,550	36.56%
Riga	877	1,751	50.09%	462	875	52.80%	415	876	47.37%
Rush	604	1,031	58.58%	315	531	59.32%	289	500	57.80%
Sweden	695	2,306	30.14%	370	1,184	31.25%	325	1,122	28.97%
Webster	3,040	10,227	29.73%	1,683	5,184	32.47%	1,357	5,043	26.91%
Wheatland	404	1,227	32.93%	218	608	35.86%	186	619	30.05%
TOWNS TOTAL:	44,989	118,589	37.94%	23,997	59,906	40.06%	20,992	58,683	35.77%
GRAND TOTAL:	49,613	130,034	38.15%	26,473	65,804	40.23%	23,140	64,230	36.03%

2013 GENERAL ELECTION
REPUBLICAN TURNOUT BY AGE

LT/LD SUMMARY
Part 1 of 2

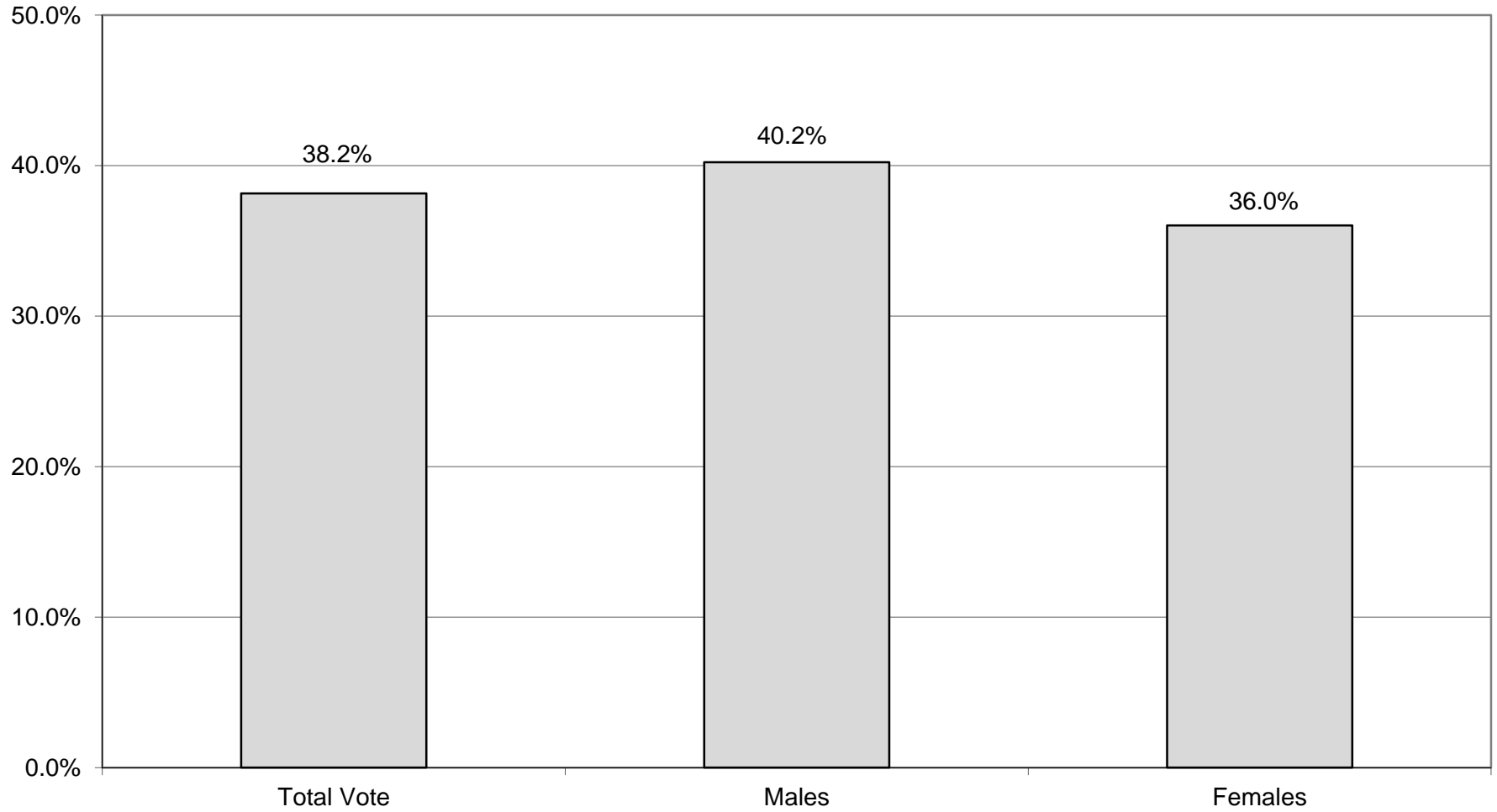
LEGISLATIVE DISTRICT OR TOWN CITY	NDOB			18-24			25-34			35-44		
	VOTED	REGISTERED	TURNOUT	VOTED	REGISTERED	TURNOUT	VOTED	REGISTERED	TURNOUT	VOTED	REGISTERED	TURNOUT
Leg. Dist. 07	1	10	10.00%	0	8	0.00%	4	31	12.90%	8	24	33.33%
Leg. Dist. 16	2	7	28.57%	0	3	0.00%	1	13	7.69%	3	11	27.27%
Leg. Dist. 21	26	57	45.61%	13	61	21.31%	69	244	28.28%	59	218	27.06%
Leg. Dist. 22	2	10	20.00%	4	42	9.52%	12	77	15.58%	13	91	14.29%
Leg. Dist. 23	31	46	67.39%	13	99	13.13%	129	503	25.65%	120	303	39.60%
Leg. Dist. 24	13	28	46.43%	5	69	7.25%	74	233	31.76%	44	122	36.07%
Leg. Dist. 25	9	30	30.00%	4	26	15.38%	23	147	15.65%	32	111	28.83%
Leg. Dist. 26	17	46	36.96%	10	60	16.67%	43	206	20.87%	86	234	36.75%
Leg. Dist. 27	15	27	55.56%	5	51	9.80%	37	179	20.67%	38	138	27.54%
Leg. Dist. 28	14	37	37.84%	6	45	13.33%	23	133	17.29%	36	169	21.30%
Leg. Dist. 29	15	39	38.46%	6	46	13.04%	21	130	16.15%	35	166	21.08%
CITY TOTAL:	145	337	43.03%	66	510	12.94%	436	1,896	23.00%	474	1,587	29.87%
TOWNS												
Brighton	68	148	45.95%	18	254	7.09%	90	578	15.57%	145	633	22.91%
Chili	54	134	40.30%	35	402	8.71%	106	720	14.72%	157	907	17.31%
Clarkson	2	3	66.67%	14	87	16.09%	27	155	17.42%	65	232	28.02%
East Rochester	21	36	58.33%	12	51	23.53%	24	129	18.60%	48	127	37.80%
Gates	23	60	38.33%	33	214	15.42%	73	570	12.81%	128	642	19.94%
Greece	215	479	44.89%	150	1,050	14.29%	364	2,213	16.45%	640	2,557	25.03%
Hamlin	9	15	60.00%	28	115	24.35%	64	225	28.44%	127	312	40.71%
Henrietta	19	37	51.35%	74	370	20.00%	173	767	22.56%	343	963	35.62%
Irondequoit	115	272	42.28%	45	346	13.01%	184	1,022	18.00%	332	1,128	29.43%
Mendon	4	11	36.36%	17	186	9.14%	17	190	8.95%	69	321	21.50%
Ogden	17	53	32.08%	27	314	8.60%	66	560	11.79%	130	707	18.39%
Parma	9	30	30.00%	23	228	10.09%	59	408	14.46%	112	529	21.17%
Penfield	54	143	37.76%	48	482	9.96%	102	763	13.37%	239	1,198	19.95%
Perinton	15	46	32.61%	43	714	6.02%	110	979	11.24%	288	1,510	19.07%
Pittsford	24	58	41.38%	29	392	7.40%	54	474	11.39%	216	862	25.06%
Riga	4	12	33.33%	29	111	26.13%	38	172	22.09%	80	201	39.80%
Rush	24	37	64.86%	11	53	20.75%	22	71	30.99%	37	103	35.92%
Sweden	5	22	22.73%	10	123	8.13%	25	253	9.88%	51	272	18.75%
Webster	53	139	38.13%	38	473	8.03%	101	935	10.80%	251	1,382	18.16%
Wheatland	3	6	50.00%	7	80	8.75%	13	147	8.84%	33	138	23.91%
TOWNS TOTAL:	738	1,741	42.39%	691	6,045	11.43%	1,712	11,331	15.11%	3,491	14,724	23.71%
GRAND TOTAL:	883	2,078	42.49%	757	6,555	11.55%	2,148	13,227	16.24%	3,965	16,311	24.31%

2013 GENERAL ELECTION
REPUBLICAN TURNOUT BY AGE

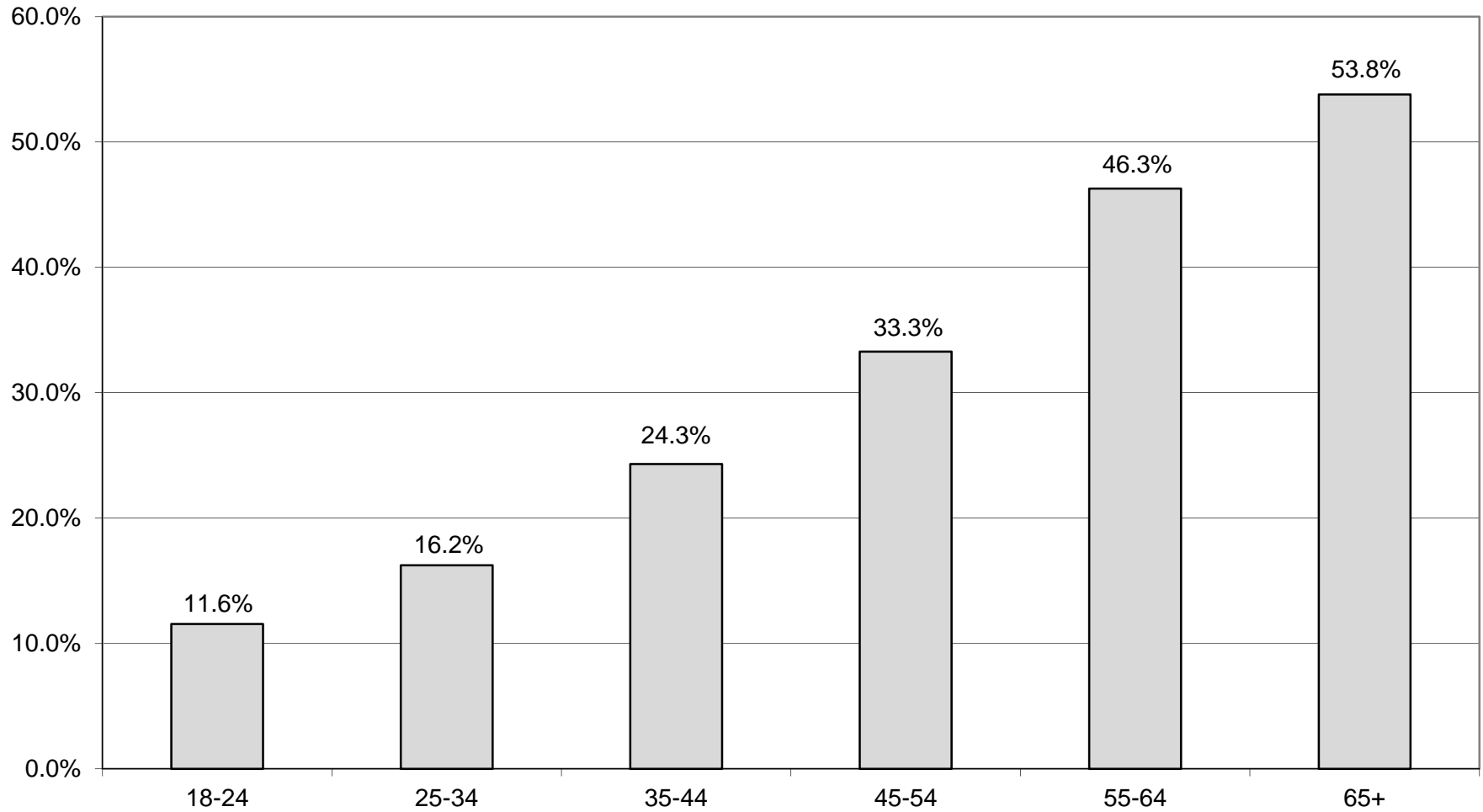
LT/LD SUMMARY
Part 2 of 2

LEGISLATIVE DISTRICT OR TOWN	45-54			55-64			65+		
	VOTED	REGISTERED	TURNOUT	VOTED	REGISTERED	TURNOUT	VOTED	REGISTERED	TURNOUT
CITY									
Leg. Dist. 07	24	52	46.15%	50	78	64.10%	57	107	53.27%
Leg. Dist. 16	3	13	23.08%	9	19	47.37%	9	23	39.13%
Leg. Dist. 21	108	262	41.22%	145	265	54.72%	188	313	60.06%
Leg. Dist. 22	32	133	24.06%	46	127	36.22%	51	141	36.17%
Leg. Dist. 23	185	349	53.01%	228	370	61.62%	287	433	66.28%
Leg. Dist. 24	78	166	46.99%	108	193	55.96%	154	299	51.51%
Leg. Dist. 25	48	128	37.50%	65	128	50.78%	72	172	41.86%
Leg. Dist. 26	139	332	41.87%	200	356	56.18%	260	452	57.52%
Leg. Dist. 27	66	182	36.26%	115	230	50.00%	141	269	52.42%
Leg. Dist. 28	73	220	33.18%	111	259	42.86%	126	263	47.91%
Leg. Dist. 29	60	228	26.32%	113	235	48.09%	152	318	47.80%
CITY TOTAL:	816	2,065	39.52%	1,190	2,260	52.65%	1,497	2,790	53.66%
TOWNS									
Brighton	236	922	25.60%	341	909	37.51%	894	1,944	45.99%
Chili	413	1,515	27.26%	528	1,265	41.74%	937	1,868	50.16%
Clarkson	145	403	35.98%	144	322	44.72%	215	427	50.35%
East Rochester	108	236	45.76%	112	217	51.61%	169	294	57.48%
Gates	329	1,054	31.21%	455	1,046	43.50%	1,032	1,929	53.50%
Greece	1,500	4,170	35.97%	2,169	4,284	50.63%	3,937	6,880	57.22%
Hamlin	268	515	52.04%	346	535	64.67%	399	584	68.32%
Henrietta	712	1,461	48.73%	852	1,413	60.30%	1,385	2,110	65.64%
Irondequoit	781	1,938	40.30%	944	1,817	51.95%	1,764	3,156	55.89%
Mendon	250	735	34.01%	258	558	46.24%	378	664	56.93%
Ogden	296	1,182	25.04%	404	1,043	38.73%	579	1,246	46.47%
Parma	327	904	36.17%	420	891	47.14%	663	1,212	54.70%
Penfield	633	2,115	29.93%	745	1,766	42.19%	1,404	2,666	52.66%
Perinton	720	2,841	25.34%	909	2,475	36.73%	1,957	3,931	49.78%
Pittsford	536	1,665	32.19%	607	1,402	43.30%	1,371	2,426	56.51%
Riga	202	420	48.10%	218	384	56.77%	306	451	67.85%
Rush	143	241	59.34%	151	234	64.53%	216	292	73.97%
Sweden	133	486	27.37%	176	483	36.44%	295	667	44.23%
Webster	536	2,376	22.56%	724	1,925	37.61%	1,337	2,997	44.61%
Wheatland	65	248	26.21%	107	270	39.63%	176	338	52.07%
TOWNS TOTAL:	8,333	25,427	32.77%	10,610	23,239	45.66%	19,414	36,082	53.81%
GRAND TOTAL:	9,149	27,492	33.28%	11,800	25,499	46.28%	20,911	38,872	53.79%

REPUBLICAN TURNOUT - TOTAL AND GENDER 2013 GENERAL ELECTION



REPUBLICAN TURNOUT BY AGE GROUP 2013 GENERAL ELECTION



CONSERVATIVE SUMMARY

2013 GENERAL ELECTION
CONSERVATIVE TURNOUT BY GENDER

LT/LD SUMMARY

LEGISLATIVE DISTRICT OR TOWN	TOTAL VOTERS			MALES			FEMALES		
	VOTED	REGISTERED	TURNOUT	VOTED	REGISTERED	TURNOUT	VOTED	REGISTERED	TURNOUT
CITY									
Leg. Dist. 07	16	25	64.00%	10	15	66.67%	6	10	60.00%
Leg. Dist. 16	3	6	50.00%	1	2	50.00%	2	4	50.00%
Leg. Dist. 21	32	88	36.36%	24	48	50.00%	8	40	20.00%
Leg. Dist. 22	17	56	30.36%	13	30	43.33%	4	26	15.38%
Leg. Dist. 23	49	113	43.36%	32	68	47.06%	17	45	37.78%
Leg. Dist. 24	25	54	46.30%	17	32	53.13%	8	22	36.36%
Leg. Dist. 25	23	56	41.07%	14	31	45.16%	9	25	36.00%
Leg. Dist. 26	80	160	50.00%	39	88	44.32%	41	72	56.94%
Leg. Dist. 27	38	96	39.58%	26	61	42.62%	12	35	34.29%
Leg. Dist. 28	36	92	39.13%	19	43	44.19%	17	49	34.69%
Leg. Dist. 29	36	114	31.58%	25	66	37.88%	11	48	22.92%
CITY TOTAL:	355	860	41.28%	220	484	45.45%	135	376	35.90%
TOWNS									
Brighton	64	219	29.22%	41	125	32.80%	23	94	24.47%
Chili	171	457	37.42%	104	269	38.66%	67	188	35.64%
Clarkson	37	119	31.09%	24	73	32.88%	13	46	28.26%
East Rochester	27	81	33.33%	16	45	35.56%	11	36	30.56%
Gates	143	393	36.39%	86	215	40.00%	57	178	32.02%
Greece	656	1,596	41.10%	370	839	44.10%	286	757	37.78%
Hamlin	52	138	37.68%	35	85	41.18%	17	53	32.08%
Henrietta	225	472	47.67%	128	268	47.76%	97	204	47.55%
Irondequoit	295	690	42.75%	183	402	45.52%	112	288	38.89%
Mendon	40	120	33.33%	26	74	35.14%	14	46	30.43%
Ogden	113	378	29.89%	71	198	35.86%	42	180	23.33%
Parma	100	268	37.31%	69	155	44.52%	31	113	27.43%
Penfield	154	437	35.24%	90	248	36.29%	64	189	33.86%
Perinton	150	468	32.05%	95	284	33.45%	55	184	29.89%
Pittsford	83	201	41.29%	56	121	46.28%	27	80	33.75%
Riga	49	104	47.12%	29	54	53.70%	20	50	40.00%
Rush	29	57	50.88%	18	33	54.55%	11	24	45.83%
Sweden	41	134	30.60%	28	72	38.89%	13	62	20.97%
Webster	177	614	28.83%	121	341	35.48%	56	273	20.51%
Wheatland	30	91	32.97%	20	56	35.71%	10	35	28.57%
TOWNS TOTAL:	2,636	7,037	37.46%	1,610	3,957	40.69%	1,026	3,080	33.31%
GRAND TOTAL:	2,991	7,897	37.88%	1,830	4,441	41.21%	1,161	3,456	33.59%

2013 GENERAL ELECTION
CONSERVATIVE TURNOUT BY AGE

LT/LD SUMMARY
Part 1 of 2

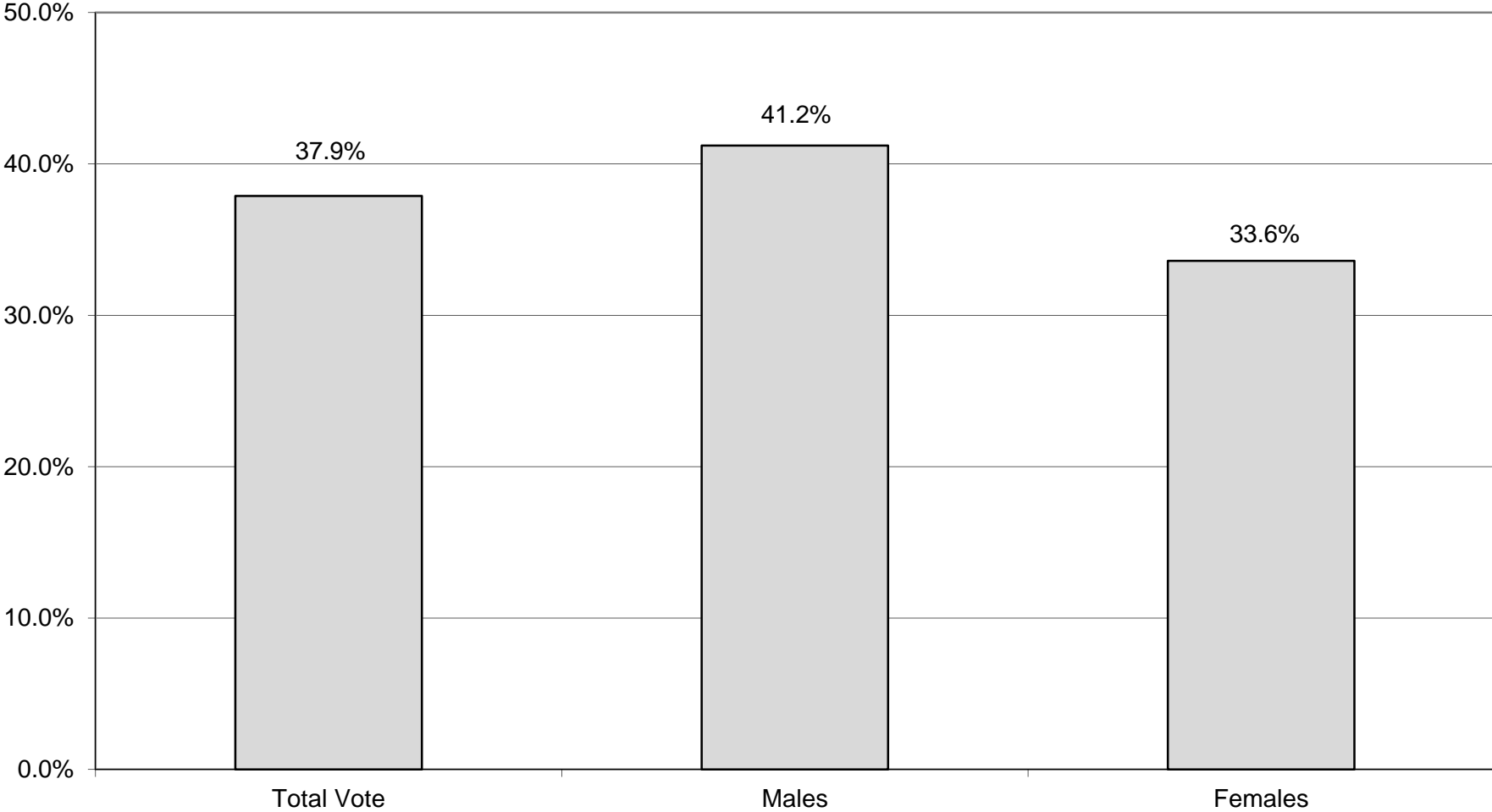
LEGISLATIVE DISTRICT OR TOWN CITY	NDOB			18-24			25-34			35-44		
	VOTED	REGISTERED	TURNOUT	VOTED	REGISTERED	TURNOUT	VOTED	REGISTERED	TURNOUT	VOTED	REGISTERED	TURNOUT
Leg. Dist. 07	0	0	0.00%	0	1	0.00%	2	3	66.67%	0	0	0.00%
Leg. Dist. 16	0	0	0.00%	0	1	0.00%	0	0	0.00%	1	2	50.00%
Leg. Dist. 21	1	2	50.00%	0	2	0.00%	2	16	12.50%	4	14	28.57%
Leg. Dist. 22	0	0	0.00%	0	5	0.00%	1	4	25.00%	0	8	0.00%
Leg. Dist. 23	0	0	0.00%	2	6	33.33%	7	25	28.00%	7	13	53.85%
Leg. Dist. 24	1	1	100.00%	1	3	33.33%	2	11	18.18%	2	8	25.00%
Leg. Dist. 25	0	0	0.00%	2	2	100.00%	0	6	0.00%	3	12	25.00%
Leg. Dist. 26	0	0	0.00%	2	12	16.67%	5	10	50.00%	8	16	50.00%
Leg. Dist. 27	0	0	0.00%	2	10	20.00%	0	10	0.00%	4	10	40.00%
Leg. Dist. 28	0	0	0.00%	1	2	50.00%	3	10	30.00%	1	8	12.50%
Leg. Dist. 29	0	0	0.00%	0	6	0.00%	1	11	9.09%	2	21	9.52%
CITY TOTAL:	2	3	66.67%	10	50	20.00%	23	106	21.70%	32	112	28.57%
TOWNS												
Brighton	0	0	0.00%	2	20	10.00%	4	19	21.05%	8	34	23.53%
Chili	2	2	100.00%	1	25	4.00%	10	51	19.61%	18	66	27.27%
Clarkson	0	0	0.00%	0	6	0.00%	1	10	10.00%	4	24	16.67%
East Rochester	0	0	0.00%	0	2	0.00%	1	9	11.11%	2	8	25.00%
Gates	0	0	0.00%	2	14	14.29%	4	36	11.11%	12	47	25.53%
Greece	4	8	50.00%	18	74	24.32%	25	165	15.15%	35	177	19.77%
Hamlin	0	0	0.00%	3	8	37.50%	2	13	15.38%	1	15	6.67%
Henrietta	1	1	100.00%	7	23	30.43%	9	49	18.37%	21	63	33.33%
Irondequoit	1	5	20.00%	3	28	10.71%	11	66	16.67%	25	93	26.88%
Mendon	0	0	0.00%	2	19	10.53%	0	8	0.00%	6	17	35.29%
Ogden	0	0	0.00%	4	28	14.29%	7	28	25.00%	13	51	25.49%
Parma	0	0	0.00%	1	14	7.14%	3	25	12.00%	11	40	27.50%
Penfield	0	2	0.00%	3	24	12.50%	4	35	11.43%	9	44	20.45%
Perinton	0	0	0.00%	2	21	9.52%	3	22	13.64%	6	61	9.84%
Pittsford	0	1	0.00%	3	13	23.08%	2	12	16.67%	6	24	25.00%
Riga	0	0	0.00%	1	12	8.33%	5	14	35.71%	7	10	70.00%
Rush	0	0	0.00%	1	3	33.33%	1	4	25.00%	1	3	33.33%
Sweden	0	0	0.00%	2	11	18.18%	3	16	18.75%	2	16	12.50%
Webster	2	3	66.67%	4	41	9.76%	7	47	14.89%	14	83	16.87%
Wheatland	0	0	0.00%	1	3	33.33%	0	6	0.00%	1	10	10.00%
TOWNS TOTAL:	10	22	45.45%	60	389	15.42%	102	635	16.06%	202	886	22.80%
GRAND TOTAL:	12	25	48.00%	70	439	15.95%	125	741	16.87%	234	998	23.45%

2013 GENERAL ELECTION
CONSERVATIVE TURNOUT BY AGE

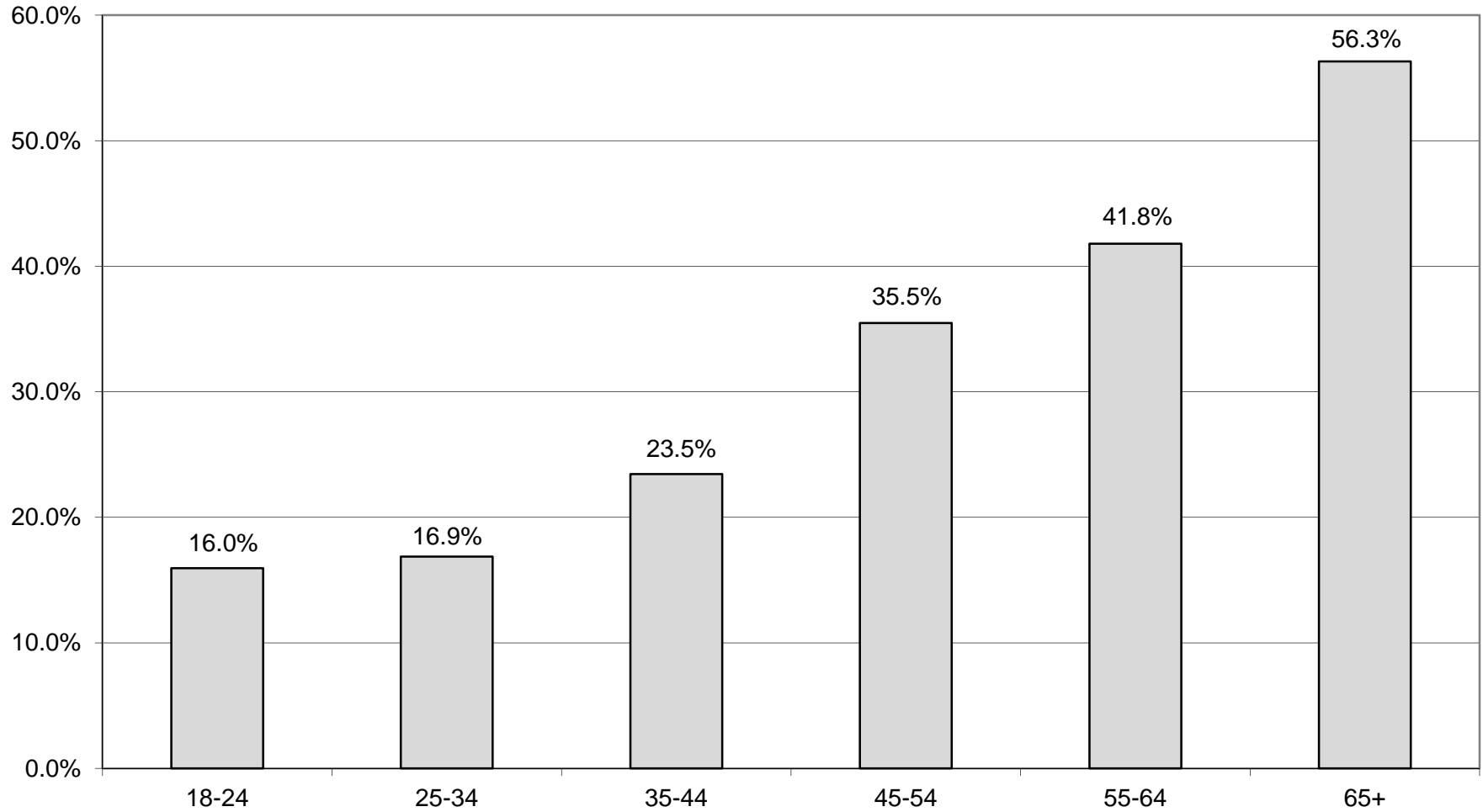
LT/LD SUMMARY
Part 2 of 2

LEGISLATIVE DISTRICT OR TOWN	45-54			55-64			65+		
	VOTED	REGISTERED	TURNOUT	VOTED	REGISTERED	TURNOUT	VOTED	REGISTERED	TURNOUT
CITY									
Leg. Dist. 07	5	6	83.33%	5	9	55.56%	4	6	66.67%
Leg. Dist. 16	1	1	100.00%	1	2	50.00%	0	0	0.00%
Leg. Dist. 21	10	18	55.56%	7	25	28.00%	8	11	72.73%
Leg. Dist. 22	1	10	10.00%	7	18	38.89%	8	11	72.73%
Leg. Dist. 23	11	26	42.31%	14	25	56.00%	8	18	44.44%
Leg. Dist. 24	5	9	55.56%	9	12	75.00%	5	10	50.00%
Leg. Dist. 25	5	14	35.71%	7	13	53.85%	6	9	66.67%
Leg. Dist. 26	17	38	44.74%	20	46	43.48%	28	38	73.68%
Leg. Dist. 27	10	17	58.82%	13	25	52.00%	9	24	37.50%
Leg. Dist. 28	9	25	36.00%	9	28	32.14%	13	19	68.42%
Leg. Dist. 29	7	19	36.84%	11	29	37.93%	15	28	53.57%
CITY TOTAL:	81	183	44.26%	103	232	44.40%	104	174	59.77%
TOWNS									
Brighton	7	44	15.91%	18	44	40.91%	25	58	43.10%
Chili	27	94	28.72%	40	98	40.82%	73	121	60.33%
Clarkson	9	32	28.13%	13	29	44.83%	10	18	55.56%
East Rochester	6	23	26.09%	15	29	51.72%	3	10	30.00%
Gates	35	103	33.98%	34	91	37.36%	56	102	54.90%
Greece	143	358	39.94%	200	432	46.30%	231	382	60.47%
Hamlin	16	39	41.03%	19	45	42.22%	11	18	61.11%
Henrietta	47	103	45.63%	56	107	52.34%	84	126	66.67%
Irondequoit	53	131	40.46%	89	182	48.90%	113	185	61.08%
Mendon	7	20	35.00%	10	28	35.71%	15	28	53.57%
Ogden	24	101	23.76%	27	94	28.72%	38	76	50.00%
Parma	26	62	41.94%	31	75	41.33%	28	52	53.85%
Penfield	29	106	27.36%	43	106	40.57%	66	120	55.00%
Perinton	25	86	29.07%	32	109	29.36%	82	169	48.52%
Pittsford	16	45	35.56%	17	36	47.22%	39	70	55.71%
Riga	15	29	51.72%	11	21	52.38%	10	18	55.56%
Rush	7	19	36.84%	7	11	63.64%	12	17	70.59%
Sweden	14	42	33.33%	12	28	42.86%	8	21	38.10%
Webster	33	126	26.19%	41	160	25.63%	76	154	49.35%
Wheatland	7	21	33.33%	13	31	41.94%	8	20	40.00%
TOWNS TOTAL:	546	1,584	34.47%	728	1,756	41.46%	988	1,765	55.98%
GRAND TOTAL:	627	1,767	35.48%	831	1,988	41.80%	1,092	1,939	56.32%

CONSERVATIVE TURNOUT - TOTAL AND GENDER 2013 GENERAL ELECTION



CONSERVATIVE TURNOUT BY AGE GROUP 2013 GENERAL ELECTION



WORKING FAMILIES SUMMARY

2013 GENERAL ELECTION
WORKING FAMILIES TURNOUT BY GENDER

LT/LD SUMMARY

LEGISLATIVE DISTRICT OR TOWN	TOTAL VOTERS			MALES			FEMALES		
	VOTED	REGISTERED	TURNOUT	VOTED	REGISTERED	TURNOUT	VOTED	REGISTERED	TURNOUT
CITY									
Leg. Dist. 07	0	5	0.00%	0	1	0.00%	0	4	0.00%
Leg. Dist. 16	1	8	12.50%	0	3	0.00%	1	5	20.00%
Leg. Dist. 21	21	71	29.58%	10	25	40.00%	11	46	23.91%
Leg. Dist. 22	12	103	11.65%	7	36	19.44%	5	67	7.46%
Leg. Dist. 23	19	43	44.19%	11	26	42.31%	8	17	47.06%
Leg. Dist. 24	15	42	35.71%	8	24	33.33%	7	18	38.89%
Leg. Dist. 25	10	55	18.18%	4	23	17.39%	6	32	18.75%
Leg. Dist. 26	7	44	15.91%	2	17	11.76%	5	27	18.52%
Leg. Dist. 27	18	85	21.18%	9	31	29.03%	9	54	16.67%
Leg. Dist. 28	14	95	14.74%	5	31	16.13%	9	64	14.06%
Leg. Dist. 29	8	75	10.67%	6	29	20.69%	2	46	4.35%
CITY TOTAL:	125	626	19.97%	62	246	25.20%	63	380	16.58%
TOWNS									
Brighton	11	33	33.33%	5	14	35.71%	6	19	31.58%
Chili	9	45	20.00%	4	20	20.00%	5	25	20.00%
Clarkson	0	11	0.00%	0	5	0.00%	0	6	0.00%
East Rochester	1	18	5.56%	1	9	11.11%	0	9	0.00%
Gates	9	74	12.16%	5	28	17.86%	4	46	8.70%
Greece	36	202	17.82%	20	85	23.53%	16	117	13.68%
Hamlin	5	19	26.32%	3	9	33.33%	2	10	20.00%
Henrietta	10	50	20.00%	7	23	30.43%	3	27	11.11%
Irondequoit	11	83	13.25%	3	42	7.14%	8	41	19.51%
Mendon	3	9	33.33%	1	4	25.00%	2	5	40.00%
Ogden	6	41	14.63%	1	20	5.00%	5	21	23.81%
Parma	8	48	16.67%	6	28	21.43%	2	20	10.00%
Penfield	5	41	12.20%	4	19	21.05%	1	22	4.55%
Perinton	6	56	10.71%	2	27	7.41%	4	29	13.79%
Pittsford	4	13	30.77%	4	8	50.00%	0	5	0.00%
Riga	2	13	15.38%	1	5	20.00%	1	8	12.50%
Rush	2	10	20.00%	2	8	25.00%	0	2	0.00%
Sweden	1	26	3.85%	0	10	0.00%	1	16	6.25%
Webster	5	54	9.26%	5	31	16.13%	0	23	0.00%
Wheatland	1	7	14.29%	1	5	20.00%	0	2	0.00%
TOWNS TOTAL:	135	853	15.83%	75	400	18.75%	60	453	13.25%
GRAND TOTAL:	260	1,479	17.58%	137	646	21.21%	123	833	14.77%

2013 GENERAL ELECTION
WORKING FAMILIES TURNOUT BY AGE

LT/LD SUMMARY
Part 1 of 2

LEGISLATIVE DISTRICT OR TOWN CITY	NDOB			18-24			25-34			35-44		
	VOTED	REGISTERED	TURNOUT	VOTED	REGISTERED	TURNOUT	VOTED	REGISTERED	TURNOUT	VOTED	REGISTERED	TURNOUT
Leg. Dist. 07	0	0	0.00%	0	0	0.00%	0	3	0.00%	0	1	0.00%
Leg. Dist. 16	0	0	0.00%	0	1	0.00%	1	2	50.00%	0	2	0.00%
Leg. Dist. 21	0	0	0.00%	0	2	0.00%	9	29	31.03%	6	18	33.33%
Leg. Dist. 22	0	0	0.00%	0	16	0.00%	1	28	3.57%	5	31	16.13%
Leg. Dist. 23	0	0	0.00%	2	4	50.00%	4	16	25.00%	3	5	60.00%
Leg. Dist. 24	0	0	0.00%	0	2	0.00%	5	14	35.71%	5	13	38.46%
Leg. Dist. 25	0	0	0.00%	0	8	0.00%	2	11	18.18%	3	15	20.00%
Leg. Dist. 26	0	0	0.00%	0	2	0.00%	2	11	18.18%	3	15	20.00%
Leg. Dist. 27	0	0	0.00%	0	12	0.00%	2	21	9.52%	7	21	33.33%
Leg. Dist. 28	0	0	0.00%	2	13	15.38%	1	27	3.70%	5	29	17.24%
Leg. Dist. 29	0	0	0.00%	1	6	16.67%	0	22	0.00%	2	25	8.00%
CITY TOTAL:	0	0	0.00%	5	66	7.58%	27	184	14.67%	39	175	22.29%
TOWNS												
Brighton	0	0	0.00%	1	3	33.33%	1	5	20.00%	2	9	22.22%
Chili	0	0	0.00%	1	3	33.33%	0	11	0.00%	2	8	25.00%
Clarkson	0	0	0.00%	0	0	0.00%	0	2	0.00%	0	4	0.00%
East Rochester	0	0	0.00%	0	1	0.00%	0	4	0.00%	0	4	0.00%
Gates	0	0	0.00%	0	2	0.00%	1	15	6.67%	0	19	0.00%
Greece	0	0	0.00%	2	13	15.38%	7	42	16.67%	5	55	9.09%
Hamlin	0	0	0.00%	0	0	0.00%	0	5	0.00%	1	3	33.33%
Henrietta	0	0	0.00%	0	2	0.00%	2	10	20.00%	1	9	11.11%
Irondequoit	0	0	0.00%	0	9	0.00%	3	19	15.79%	3	20	15.00%
Mendon	0	0	0.00%	1	1	100.00%	0	1	0.00%	0	4	0.00%
Ogden	0	0	0.00%	0	3	0.00%	1	8	12.50%	1	10	10.00%
Parma	0	0	0.00%	0	4	0.00%	0	6	0.00%	2	14	14.29%
Penfield	0	0	0.00%	0	3	0.00%	0	6	0.00%	0	12	0.00%
Perinton	0	0	0.00%	1	5	20.00%	0	9	0.00%	0	21	0.00%
Pittsford	0	0	0.00%	0	2	0.00%	1	1	100.00%	0	2	0.00%
Riga	0	0	0.00%	0	0	0.00%	0	3	0.00%	1	5	20.00%
Rush	0	0	0.00%	0	0	0.00%	1	3	33.33%	0	2	0.00%
Sweden	0	0	0.00%	0	3	0.00%	0	5	0.00%	0	9	0.00%
Webster	0	0	0.00%	0	3	0.00%	0	9	0.00%	0	16	0.00%
Wheatland	0	0	0.00%	0	0	0.00%	0	2	0.00%	0	2	0.00%
TOWNS TOTAL:	0	0	0.00%	6	57	10.53%	17	166	10.24%	18	228	7.89%
GRAND TOTAL:	0	0	0.00%	11	123	8.94%	44	350	12.57%	57	403	14.14%

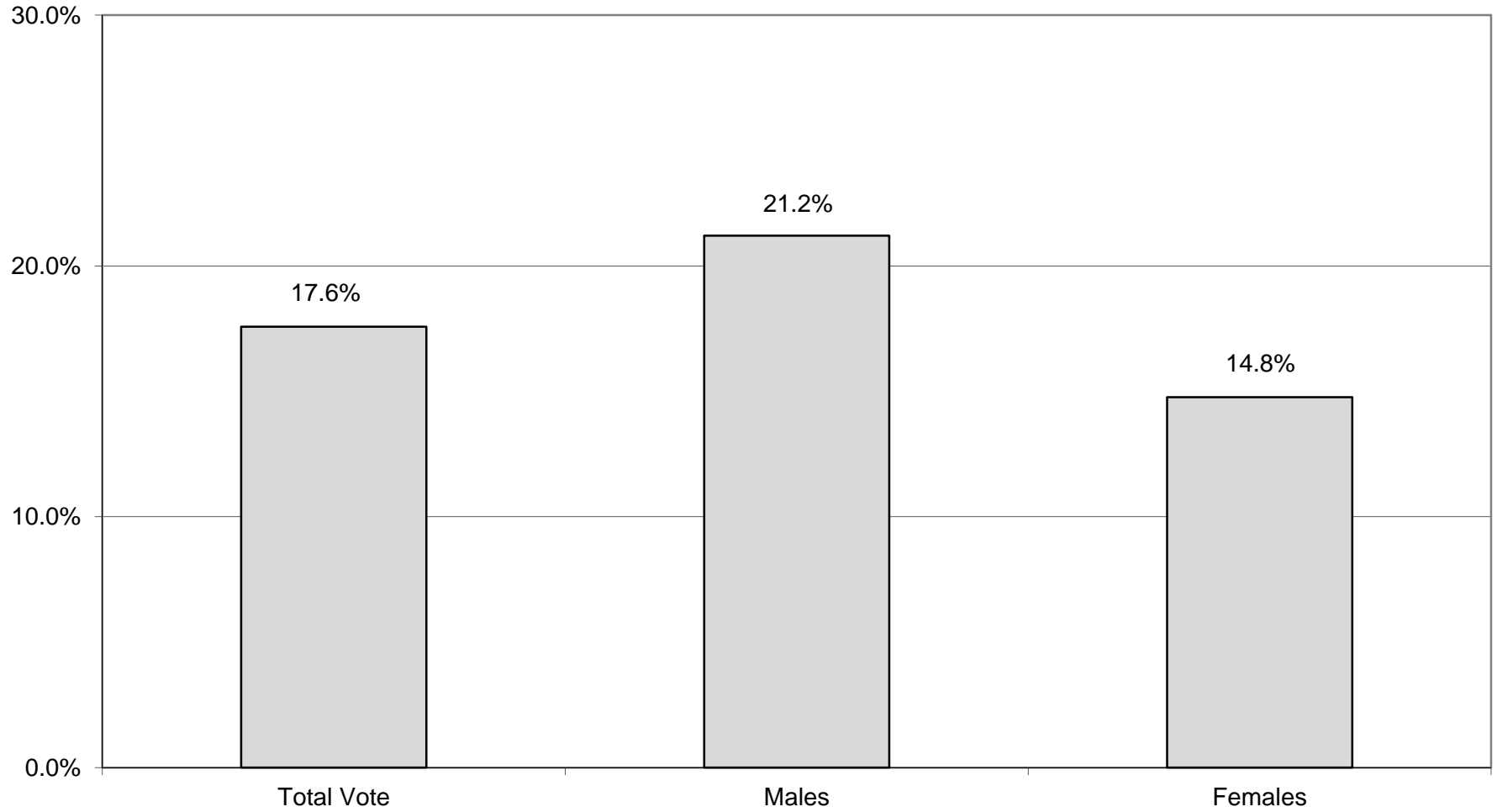
2013 GENERAL ELECTION
WORKING FAMILIES TURNOUT BY AGE

LT/LD SUMMARY

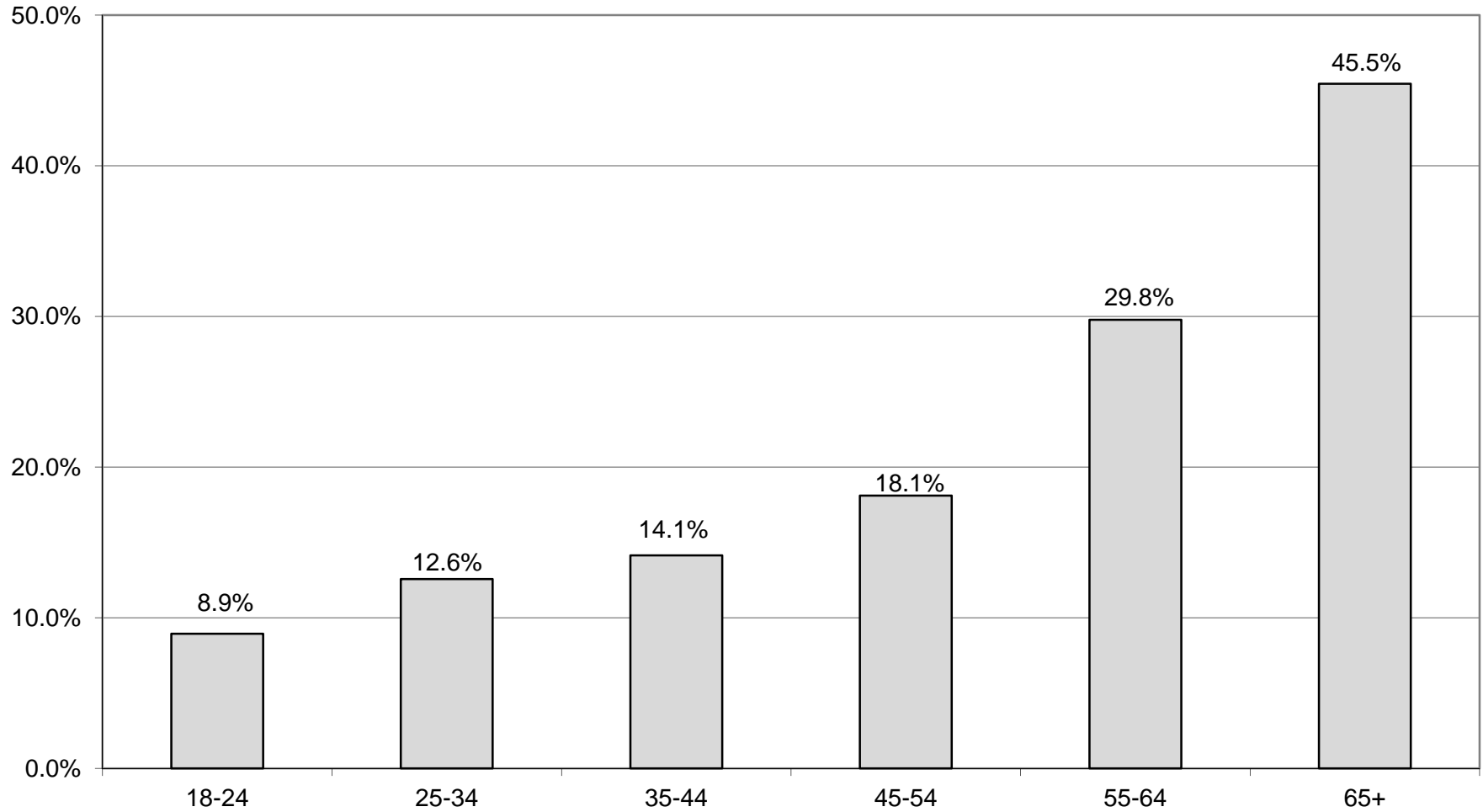
Part 2 of 2

LEGISLATIVE DISTRICT OR TOWN	45-54			55-64			65+		
	VOTED	REGISTERED	TURNOUT	VOTED	REGISTERED	TURNOUT	VOTED	REGISTERED	TURNOUT
CITY									
Leg. Dist. 07	0	0	0.00%	0	1	0.00%	0	0	0.00%
Leg. Dist. 16	0	3	0.00%	0	0	0.00%	0	0	0.00%
Leg. Dist. 21	3	15	20.00%	2	6	33.33%	1	1	100.00%
Leg. Dist. 22	4	16	25.00%	2	10	20.00%	0	2	0.00%
Leg. Dist. 23	4	8	50.00%	3	7	42.86%	3	3	100.00%
Leg. Dist. 24	1	6	16.67%	2	5	40.00%	2	2	100.00%
Leg. Dist. 25	3	10	30.00%	2	9	22.22%	0	2	0.00%
Leg. Dist. 26	1	13	7.69%	1	3	33.33%	0	0	0.00%
Leg. Dist. 27	4	19	21.05%	3	6	50.00%	2	6	33.33%
Leg. Dist. 28	4	18	22.22%	1	6	16.67%	1	2	50.00%
Leg. Dist. 29	2	13	15.38%	1	6	16.67%	2	3	66.67%
CITY TOTAL:	26	121	21.49%	17	59	28.81%	11	21	52.38%
TOWNS									
Brighton	6	13	46.15%	0	1	0.00%	1	2	50.00%
Chili	2	11	18.18%	4	10	40.00%	0	2	0.00%
Clarkson	0	2	0.00%	0	3	0.00%	0	0	0.00%
East Rochester	0	6	0.00%	1	3	33.33%	0	0	0.00%
Gates	4	18	22.22%	1	10	10.00%	3	10	30.00%
Greece	12	57	21.05%	7	29	24.14%	3	6	50.00%
Hamlin	1	7	14.29%	3	4	75.00%	0	0	0.00%
Henrietta	2	18	11.11%	3	9	33.33%	2	2	100.00%
Irondequoit	1	22	4.55%	2	9	22.22%	2	4	50.00%
Mendon	1	1	100.00%	1	2	50.00%	0	0	0.00%
Ogden	2	17	11.76%	1	2	50.00%	1	1	100.00%
Parma	2	13	15.38%	3	8	37.50%	1	3	33.33%
Penfield	1	8	12.50%	2	8	25.00%	2	4	50.00%
Perinton	1	12	8.33%	3	6	50.00%	1	3	33.33%
Pittsford	1	5	20.00%	1	1	100.00%	1	2	50.00%
Riga	0	2	0.00%	1	3	33.33%	0	0	0.00%
Rush	0	3	0.00%	1	2	50.00%	0	0	0.00%
Sweden	0	5	0.00%	0	3	0.00%	1	1	100.00%
Webster	3	16	18.75%	1	5	20.00%	1	5	20.00%
Wheatland	0	2	0.00%	1	1	100.00%	0	0	0.00%
TOWNS TOTAL:	39	238	16.39%	36	119	30.25%	19	45	42.22%
GRAND TOTAL:	65	359	18.11%	53	178	29.78%	30	66	45.45%

WORKING FAMILIES TURNOUT - TOTAL AND GENDER 2013 GENERAL ELECTION



WORKING FAMILIES TURNOUT BY AGE GROUP 2013 GENERAL ELECTION



INDEPENDENCE SUMMARY

2013 GENERAL ELECTION
INDEPENDENCE TURNOUT BY GENDER

LT/LD SUMMARY

LEGISLATIVE DISTRICT OR TOWN	TOTAL VOTERS			MALES			FEMALES		
	VOTED	REGISTERED	TURNOUT	VOTED	REGISTERED	TURNOUT	VOTED	REGISTERED	TURNOUT
CITY									
Leg. Dist. 07	29	68	42.65%	14	32	43.75%	15	36	41.67%
Leg. Dist. 16	10	23	43.48%	4	8	50.00%	6	15	40.00%
Leg. Dist. 21	136	457	29.76%	56	199	28.14%	80	258	31.01%
Leg. Dist. 22	35	250	14.00%	21	112	18.75%	14	138	10.14%
Leg. Dist. 23	201	606	33.17%	115	301	38.21%	86	305	28.20%
Leg. Dist. 24	97	366	26.50%	52	184	28.26%	45	182	24.73%
Leg. Dist. 25	81	283	28.62%	48	148	32.43%	33	135	24.44%
Leg. Dist. 26	116	375	30.93%	62	182	34.07%	54	193	27.98%
Leg. Dist. 27	114	427	26.70%	65	233	27.90%	49	194	25.26%
Leg. Dist. 28	67	308	21.75%	36	168	21.43%	31	140	22.14%
Leg. Dist. 29	79	310	25.48%	54	177	30.51%	25	133	18.80%
CITY TOTAL:	965	3,473	27.79%	527	1,744	30.22%	438	1,729	25.33%
TOWNS									
Brighton	166	964	17.22%	89	439	20.27%	77	525	14.67%
Chili	144	826	17.43%	70	398	17.59%	74	428	17.29%
Clarkson	31	208	14.90%	20	107	18.69%	11	101	10.89%
East Rochester	64	257	24.90%	30	133	22.56%	34	124	27.42%
Gates	151	834	18.11%	84	409	20.54%	67	425	15.76%
Greece	684	2,927	23.37%	349	1,369	25.49%	335	1,558	21.50%
Hamlin	82	281	29.18%	43	133	32.33%	39	148	26.35%
Henrietta	296	1,036	28.57%	139	466	29.83%	157	570	27.54%
Irondequoit	458	1,702	26.91%	218	790	27.59%	240	912	26.32%
Mendon	72	349	20.63%	38	159	23.90%	34	190	17.89%
Ogden	83	641	12.95%	39	314	12.42%	44	327	13.46%
Parma	102	540	18.89%	52	261	19.92%	50	279	17.92%
Penfield	238	1,331	17.88%	121	618	19.58%	117	713	16.41%
Perinton	253	1,547	16.35%	134	698	19.20%	119	849	14.02%
Pittsford	200	849	23.56%	90	370	24.32%	110	479	22.96%
Riga	65	218	29.82%	35	105	33.33%	30	113	26.55%
Rush	45	108	41.67%	25	52	48.08%	20	56	35.71%
Sweden	47	339	13.86%	28	164	17.07%	19	175	10.86%
Webster	232	1,513	15.33%	123	738	16.67%	109	775	14.06%
Wheatland	29	164	17.68%	18	85	21.18%	11	79	13.92%
TOWNS TOTAL:	3,442	16,634	20.69%	1,745	7,808	22.35%	1,697	8,826	19.23%
GRAND TOTAL:	4,407	20,107	21.92%	2,272	9,552	23.79%	2,135	10,555	20.23%

2013 GENERAL ELECTION
INDEPENDENCE TURNOUT BY AGE

LT/LD SUMMARY
Part 1 of 2

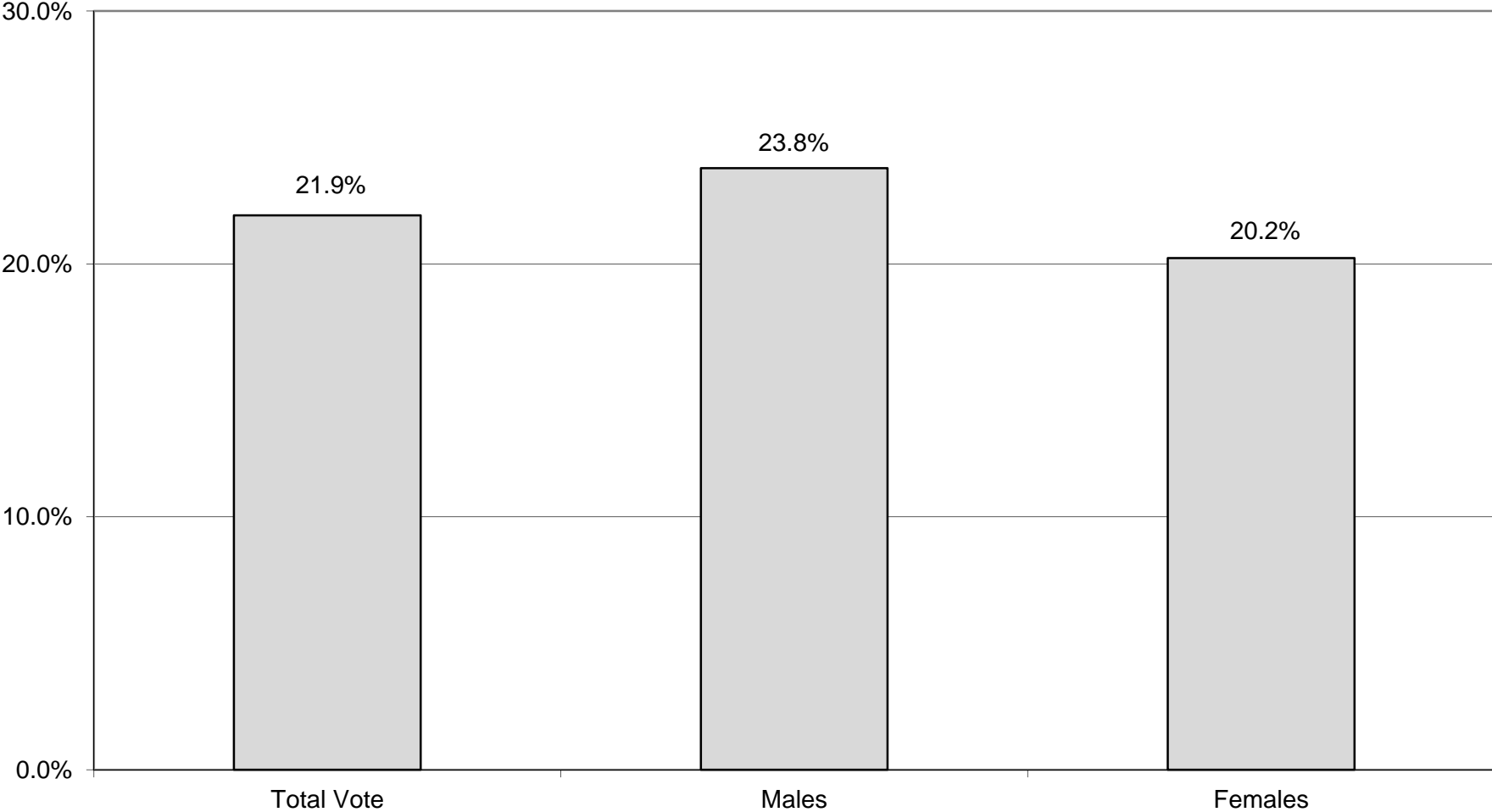
LEGISLATIVE DISTRICT OR TOWN CITY	NDOB			18-24			25-34			35-44		
	VOTED	REGISTERED	TURNOUT	VOTED	REGISTERED	TURNOUT	VOTED	REGISTERED	TURNOUT	VOTED	REGISTERED	TURNOUT
Leg. Dist. 07	0	0	0.00%	0	4	0.00%	2	12	16.67%	3	4	75.00%
Leg. Dist. 16	0	0	0.00%	1	2	50.00%	1	4	25.00%	1	3	33.33%
Leg. Dist. 21	0	0	0.00%	1	59	1.69%	24	125	19.20%	35	95	36.84%
Leg. Dist. 22	0	0	0.00%	3	48	6.25%	5	67	7.46%	6	49	12.24%
Leg. Dist. 23	0	0	0.00%	4	61	6.56%	48	231	20.78%	36	106	33.96%
Leg. Dist. 24	1	1	100.00%	0	47	0.00%	15	115	13.04%	28	75	37.33%
Leg. Dist. 25	0	0	0.00%	2	39	5.13%	12	72	16.67%	21	61	34.43%
Leg. Dist. 26	0	0	0.00%	2	31	6.45%	13	86	15.12%	21	82	25.61%
Leg. Dist. 27	0	0	0.00%	8	64	12.50%	12	102	11.76%	21	73	28.77%
Leg. Dist. 28	1	1	100.00%	4	36	11.11%	4	62	6.45%	9	57	15.79%
Leg. Dist. 29	0	0	0.00%	3	42	7.14%	8	78	10.26%	15	55	27.27%
CITY TOTAL:	2	2	100.00%	28	433	6.47%	144	954	15.09%	196	660	29.70%
TOWNS												
Brighton	0	0	0.00%	4	96	4.17%	19	214	8.88%	23	168	13.69%
Chili	0	0	0.00%	9	108	8.33%	14	188	7.45%	21	173	12.14%
Clarkson	0	0	0.00%	1	25	4.00%	2	30	6.67%	3	42	7.14%
East Rochester	0	0	0.00%	3	34	8.82%	9	60	15.00%	15	43	34.88%
Gates	0	0	0.00%	6	75	8.00%	14	178	7.87%	15	155	9.68%
Greece	0	0	0.00%	29	347	8.36%	56	630	8.89%	85	527	16.13%
Hamlin	0	0	0.00%	4	35	11.43%	6	53	11.32%	16	58	27.59%
Henrietta	0	1	0.00%	22	126	17.46%	35	220	15.91%	45	200	22.50%
Irondequoit	0	0	0.00%	12	165	7.27%	47	398	11.81%	87	359	24.23%
Mendon	0	0	0.00%	3	59	5.08%	3	60	5.00%	7	57	12.28%
Ogden	0	0	0.00%	2	74	2.70%	11	137	8.03%	15	140	10.71%
Parma	0	0	0.00%	0	69	0.00%	11	101	10.89%	15	115	13.04%
Penfield	0	0	0.00%	6	161	3.73%	14	263	5.32%	27	257	10.51%
Perinton	0	0	0.00%	8	176	4.55%	16	264	6.06%	32	265	12.08%
Pittsford	0	0	0.00%	7	114	6.14%	4	137	2.92%	31	154	20.13%
Riga	0	0	0.00%	0	17	0.00%	9	48	18.75%	8	39	20.51%
Rush	0	0	0.00%	2	10	20.00%	1	15	6.67%	8	18	44.44%
Sweden	0	0	0.00%	0	44	0.00%	4	61	6.56%	6	61	9.84%
Webster	0	0	0.00%	12	173	6.94%	15	260	5.77%	35	307	11.40%
Wheatland	0	0	0.00%	1	14	7.14%	6	37	16.22%	2	29	6.90%
TOWNS TOTAL:	0	1	0.00%	131	1,922	6.82%	296	3,354	8.83%	496	3,167	15.66%
GRAND TOTAL:	2	3	66.67%	159	2,355	6.75%	440	4,308	10.21%	692	3,827	18.08%

2013 GENERAL ELECTION
INDEPENDENCE TURNOUT BY AGE

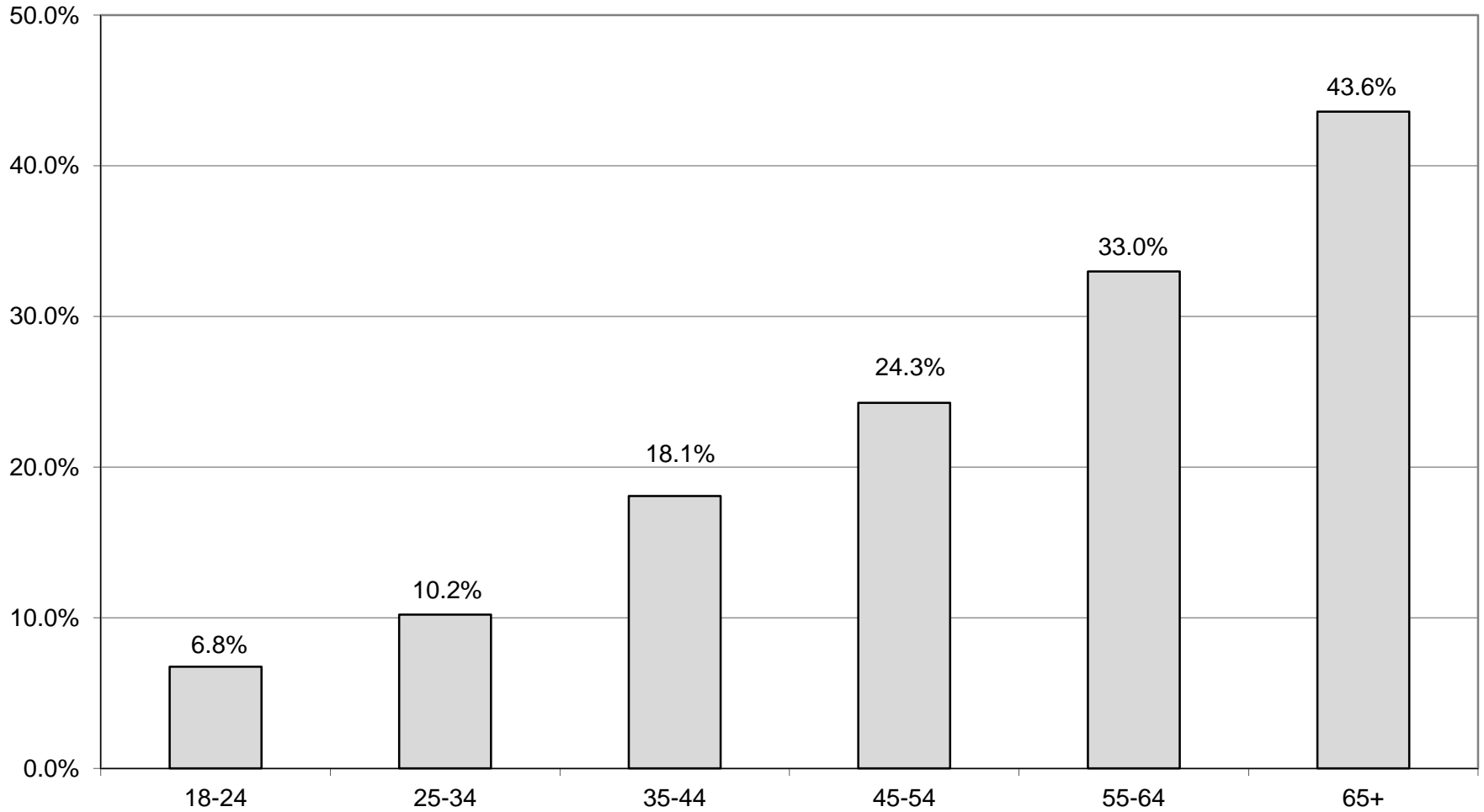
LT/LD SUMMARY
Part 2 of 2

LEGISLATIVE DISTRICT OR TOWN	45-54			55-64			65+		
	VOTED	REGISTERED	TURNOUT	VOTED	REGISTERED	TURNOUT	VOTED	REGISTERED	TURNOUT
CITY									
Leg. Dist. 07	5	14	35.71%	9	17	52.94%	10	17	58.82%
Leg. Dist. 16	1	7	14.29%	2	3	66.67%	4	4	100.00%
Leg. Dist. 21	25	77	32.47%	23	56	41.07%	28	45	62.22%
Leg. Dist. 22	6	38	15.79%	11	31	35.48%	4	17	23.53%
Leg. Dist. 23	49	101	48.51%	39	63	61.90%	25	44	56.82%
Leg. Dist. 24	22	63	34.92%	14	36	38.89%	17	29	58.62%
Leg. Dist. 25	17	48	35.42%	15	35	42.86%	14	28	50.00%
Leg. Dist. 26	29	74	39.19%	28	58	48.28%	23	44	52.27%
Leg. Dist. 27	25	75	33.33%	33	79	41.77%	15	34	44.12%
Leg. Dist. 28	20	78	25.64%	18	50	36.00%	11	24	45.83%
Leg. Dist. 29	17	57	29.82%	17	46	36.96%	19	32	59.38%
CITY TOTAL:	216	632	34.18%	209	474	44.09%	170	318	53.46%
TOWNS									
Brighton	36	187	19.25%	27	126	21.43%	57	173	32.95%
Chili	30	135	22.22%	23	99	23.23%	47	123	38.21%
Clarkson	14	56	25.00%	3	27	11.11%	8	28	28.57%
East Rochester	11	48	22.92%	13	47	27.66%	13	25	52.00%
Gates	17	154	11.04%	39	126	30.95%	60	146	41.10%
Greece	153	560	27.32%	153	427	35.83%	208	436	47.71%
Hamlin	25	64	39.06%	15	43	34.88%	16	28	57.14%
Henrietta	69	217	31.80%	52	132	39.39%	73	140	52.14%
Irondequoit	98	323	30.34%	103	247	41.70%	111	210	52.86%
Mendon	18	72	25.00%	20	55	36.36%	21	46	45.65%
Ogden	11	130	8.46%	22	88	25.00%	22	72	30.56%
Parma	26	103	25.24%	19	77	24.68%	31	75	41.33%
Penfield	56	275	20.36%	50	182	27.47%	85	193	44.04%
Perinton	51	334	15.27%	50	227	22.03%	96	281	34.16%
Pittsford	57	199	28.64%	44	116	37.93%	57	129	44.19%
Riga	14	47	29.79%	17	40	42.50%	17	27	62.96%
Rush	15	34	44.12%	6	11	54.55%	13	20	65.00%
Sweden	8	77	10.39%	16	57	28.07%	13	39	33.33%
Webster	47	329	14.29%	46	214	21.50%	77	230	33.48%
Wheatland	2	38	5.26%	11	28	39.29%	7	18	38.89%
TOWNS TOTAL:	758	3,382	22.41%	729	2,369	30.77%	1,032	2,439	42.31%
GRAND TOTAL:	974	4,014	24.27%	938	2,843	32.99%	1,202	2,757	43.60%

INDEPENDENCE TURNOUT - TOTAL AND GENDER 2013 GENERAL ELECTION



INDEPENDENCE TURNOUT BY AGE GROUP 2013 GENERAL ELECTION



GREEN SUMMARY

2013 GENERAL ELECTION
GREEN TURNOUT BY GENDER

LT/LD SUMMARY

LEGISLATIVE DISTRICT OR TOWN	TOTAL VOTERS			MALES			FEMALES		
	VOTED	REGISTERED	TURNOUT	VOTED	REGISTERED	TURNOUT	VOTED	REGISTERED	TURNOUT
CITY									
Leg. Dist. 07	1	5	20.00%	1	3	33.33%	0	2	0.00%
Leg. Dist. 16	0	1	0.00%	0	0	0.00%	0	1	0.00%
Leg. Dist. 21	21	51	41.18%	14	28	50.00%	7	23	30.43%
Leg. Dist. 22	6	20	30.00%	4	16	25.00%	2	4	50.00%
Leg. Dist. 23	52	94	55.32%	35	52	67.31%	17	42	40.48%
Leg. Dist. 24	40	83	48.19%	23	50	46.00%	17	33	51.52%
Leg. Dist. 25	18	42	42.86%	12	27	44.44%	6	15	40.00%
Leg. Dist. 26	3	12	25.00%	0	3	0.00%	3	9	33.33%
Leg. Dist. 27	13	32	40.63%	6	15	40.00%	7	17	41.18%
Leg. Dist. 28	3	22	13.64%	2	11	18.18%	1	11	9.09%
Leg. Dist. 29	4	16	25.00%	3	10	30.00%	1	6	16.67%
CITY TOTAL:	161	378	42.59%	100	215	46.51%	61	163	37.42%
TOWNS									
Brighton	25	86	29.07%	18	55	32.73%	7	31	22.58%
Chili	8	36	22.22%	4	19	21.05%	4	17	23.53%
Clarkson	0	2	0.00%	0	1	0.00%	0	1	0.00%
East Rochester	3	13	23.08%	2	9	22.22%	1	4	25.00%
Gates	6	31	19.35%	6	18	33.33%	0	13	0.00%
Greece	23	106	21.70%	14	77	18.18%	9	29	31.03%
Hamlin	3	19	15.79%	2	11	18.18%	1	8	12.50%
Henrietta	12	35	34.29%	8	22	36.36%	4	13	30.77%
Irondequoit	28	102	27.45%	19	67	28.36%	9	35	25.71%
Mendon	2	20	10.00%	1	11	9.09%	1	9	11.11%
Ogden	1	22	4.55%	1	14	7.14%	0	8	0.00%
Parma	1	12	8.33%	1	9	11.11%	0	3	0.00%
Penfield	7	31	22.58%	6	23	26.09%	1	8	12.50%
Perinton	11	86	12.79%	6	48	12.50%	5	38	13.16%
Pittsford	6	35	17.14%	4	24	16.67%	2	11	18.18%
Riga	2	6	33.33%	0	4	0.00%	2	2	100.00%
Rush	3	6	50.00%	2	4	50.00%	1	2	50.00%
Sweden	7	19	36.84%	3	9	33.33%	4	10	40.00%
Webster	7	41	17.07%	3	24	12.50%	4	17	23.53%
Wheatland	1	6	16.67%	0	4	0.00%	1	2	50.00%
TOWNS TOTAL:	156	714	21.85%	100	453	22.08%	56	261	21.46%
GRAND TOTAL:	317	1,092	29.03%	200	668	29.94%	117	424	27.59%

2013 GENERAL ELECTION
GREEN TURNOUT BY AGE

LT/LD SUMMARY
Part 1 of 2

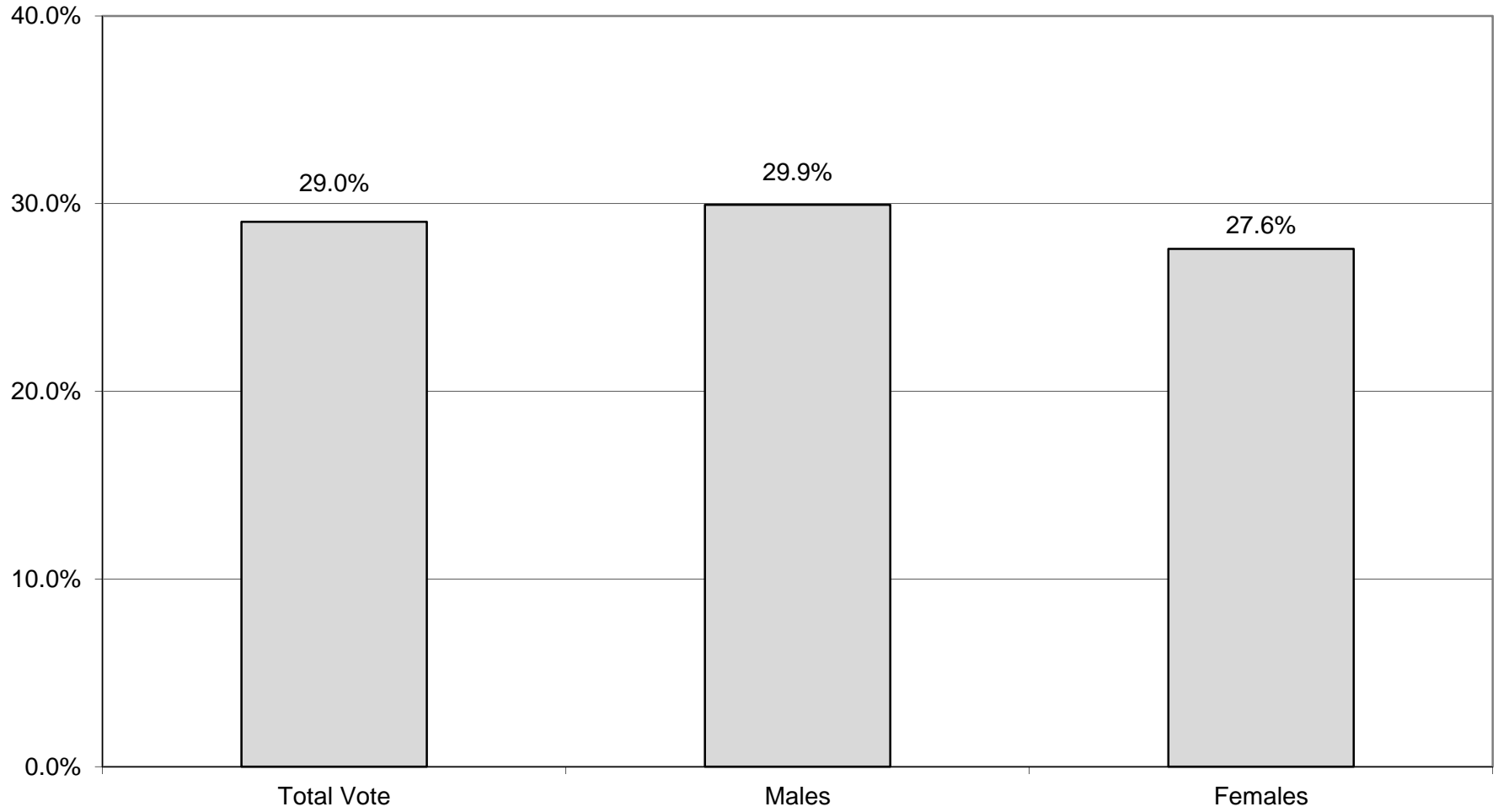
LEGISLATIVE DISTRICT OR TOWN	NDOB			18-24			25-34			35-44		
	VOTED	REGISTERED	TURNOUT	VOTED	REGISTERED	TURNOUT	VOTED	REGISTERED	TURNOUT	VOTED	REGISTERED	TURNOUT
CITY												
Leg. Dist. 07	0	0	0.00%	0	0	0.00%	0	3	0.00%	0	1	0.00%
Leg. Dist. 16	0	0	0.00%	0	0	0.00%	0	0	0.00%	0	0	0.00%
Leg. Dist. 21	0	0	0.00%	0	3	0.00%	6	16	37.50%	5	18	27.78%
Leg. Dist. 22	0	0	0.00%	1	5	20.00%	2	8	25.00%	0	1	0.00%
Leg. Dist. 23	0	0	0.00%	1	8	12.50%	21	33	63.64%	15	25	60.00%
Leg. Dist. 24	0	0	0.00%	0	3	0.00%	14	37	37.84%	11	18	61.11%
Leg. Dist. 25	0	0	0.00%	0	3	0.00%	8	18	44.44%	1	8	12.50%
Leg. Dist. 26	0	0	0.00%	0	1	0.00%	1	5	20.00%	0	2	0.00%
Leg. Dist. 27	0	0	0.00%	1	6	16.67%	2	12	16.67%	4	7	57.14%
Leg. Dist. 28	0	0	0.00%	0	3	0.00%	1	10	10.00%	0	3	0.00%
Leg. Dist. 29	0	0	0.00%	0	2	0.00%	1	4	25.00%	0	2	0.00%
CITY TOTAL:	0	0	0.00%	3	34	8.82%	56	146	38.36%	36	85	42.35%
TOWNS												
Brighton	0	0	0.00%	3	8	37.50%	1	20	5.00%	6	25	24.00%
Chili	0	0	0.00%	1	8	12.50%	1	8	12.50%	4	10	40.00%
Clarkson	0	0	0.00%	0	1	0.00%	0	0	0.00%	0	0	0.00%
East Rochester	0	0	0.00%	0	1	0.00%	0	5	0.00%	2	6	33.33%
Gates	0	0	0.00%	1	2	50.00%	2	13	15.38%	1	4	25.00%
Greece	0	0	0.00%	2	11	18.18%	6	56	10.71%	7	18	38.89%
Hamlin	0	0	0.00%	1	5	20.00%	1	8	12.50%	0	2	0.00%
Henrietta	0	0	0.00%	2	7	28.57%	5	14	35.71%	0	7	0.00%
Irondequoit	0	0	0.00%	2	15	13.33%	6	40	15.00%	3	22	13.64%
Mendon	0	0	0.00%	0	4	0.00%	0	9	0.00%	2	3	66.67%
Ogden	0	0	0.00%	0	3	0.00%	0	9	0.00%	1	6	16.67%
Parma	0	0	0.00%	0	2	0.00%	1	7	14.29%	0	3	0.00%
Penfield	0	0	0.00%	2	7	28.57%	2	11	18.18%	2	7	28.57%
Perinton	0	0	0.00%	0	21	0.00%	2	37	5.41%	2	13	15.38%
Pittsford	0	0	0.00%	0	4	0.00%	0	14	0.00%	2	3	66.67%
Riga	0	0	0.00%	0	2	0.00%	0	1	0.00%	0	1	0.00%
Rush	0	0	0.00%	0	1	0.00%	0	1	0.00%	0	1	0.00%
Sweden	0	0	0.00%	0	1	0.00%	0	6	0.00%	5	7	71.43%
Webster	0	0	0.00%	1	5	20.00%	2	21	9.52%	0	6	0.00%
Wheatland	0	0	0.00%	0	1	0.00%	0	3	0.00%	1	2	50.00%
TOWNS TOTAL:	0	0	0.00%	15	109	13.76%	29	283	10.25%	38	146	26.03%
GRAND TOTAL:	0	0	0.00%	18	143	12.59%	85	429	19.81%	74	231	32.03%

2013 GENERAL ELECTION
GREEN TURNOUT BY AGE

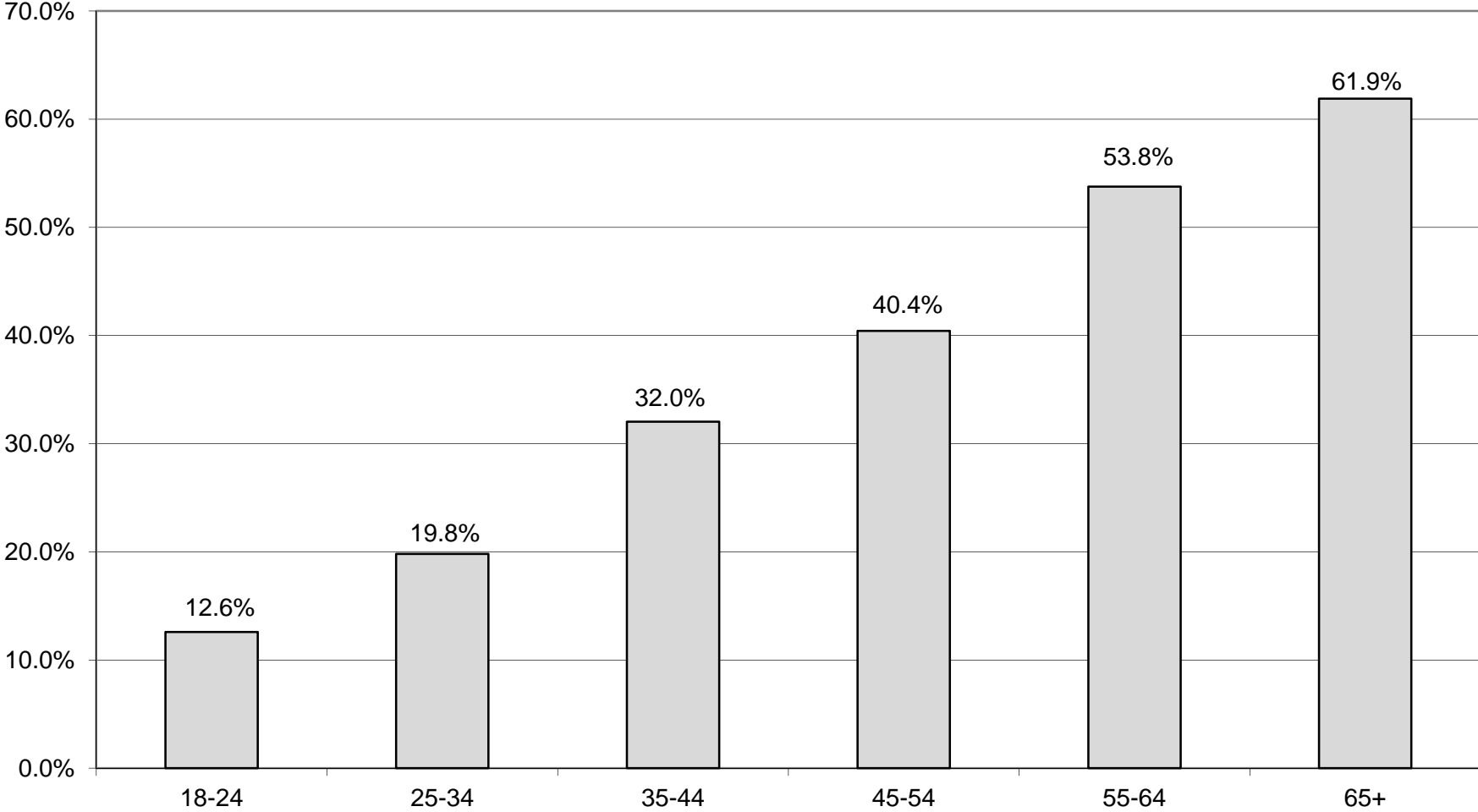
LT/LD SUMMARY
Part 2 of 2

LEGISLATIVE DISTRICT OR TOWN	45-54			55-64			65+		
	VOTED	REGISTERED	TURNOUT	VOTED	REGISTERED	TURNOUT	VOTED	REGISTERED	TURNOUT
CITY									
Leg. Dist. 07	0	0	0.00%	1	1	100.00%	0	0	0.00%
Leg. Dist. 16	0	0	0.00%	0	1	0.00%	0	0	0.00%
Leg. Dist. 21	3	3	100.00%	5	8	62.50%	2	3	66.67%
Leg. Dist. 22	1	3	33.33%	1	2	50.00%	1	1	100.00%
Leg. Dist. 23	12	21	57.14%	3	7	42.86%	0	0	0.00%
Leg. Dist. 24	6	12	50.00%	5	9	55.56%	4	4	100.00%
Leg. Dist. 25	1	2	50.00%	6	9	66.67%	2	2	100.00%
Leg. Dist. 26	0	0	0.00%	1	3	33.33%	1	1	100.00%
Leg. Dist. 27	1	2	50.00%	5	5	100.00%	0	0	0.00%
Leg. Dist. 28	1	3	33.33%	1	3	33.33%	0	0	0.00%
Leg. Dist. 29	0	3	0.00%	1	2	50.00%	2	3	66.67%
CITY TOTAL:	25	49	51.02%	29	50	58.00%	12	14	85.71%
TOWNS									
Brighton	10	19	52.63%	3	10	30.00%	2	4	50.00%
Chili	1	5	20.00%	0	4	0.00%	1	1	100.00%
Clarkson	0	0	0.00%	0	0	0.00%	0	1	0.00%
East Rochester	0	0	0.00%	1	1	100.00%	0	0	0.00%
Gates	2	9	22.22%	0	1	0.00%	0	2	0.00%
Greece	4	12	33.33%	2	5	40.00%	2	4	50.00%
Hamlin	0	3	0.00%	1	1	100.00%	0	0	0.00%
Henrietta	2	2	100.00%	1	2	50.00%	2	3	66.67%
Irondequoit	8	11	72.73%	7	11	63.64%	2	3	66.67%
Mendon	0	3	0.00%	0	1	0.00%	0	0	0.00%
Ogden	0	3	0.00%	0	1	0.00%	0	0	0.00%
Parma	0	0	0.00%	0	0	0.00%	0	0	0.00%
Penfield	0	4	0.00%	1	1	100.00%	0	1	0.00%
Perinton	1	7	14.29%	4	6	66.67%	2	2	100.00%
Pittsford	2	10	20.00%	0	2	0.00%	2	2	100.00%
Riga	0	0	0.00%	2	2	100.00%	0	0	0.00%
Rush	0	0	0.00%	2	2	100.00%	1	1	100.00%
Sweden	1	2	50.00%	1	2	50.00%	0	1	0.00%
Webster	1	2	50.00%	3	4	75.00%	0	3	0.00%
Wheatland	0	0	0.00%	0	0	0.00%	0	0	0.00%
TOWNS TOTAL:	32	92	34.78%	28	56	50.00%	14	28	50.00%
GRAND TOTAL:	57	141	40.43%	57	106	53.77%	26	42	61.90%

GREEN TURNOUT - TOTAL AND GENDER 2013 GENERAL ELECTION



GREEN TURNOUT BY AGE GROUP 2013 GENERAL ELECTION



BLANKS SUMMARY

2013 GENERAL ELECTION
BLANK TURNOUT BY GENDER

LT/LD SUMMARY

LEGISLATIVE DISTRICT OR TOWN	TOTAL VOTERS			MALES			FEMALES		
	VOTED	REGISTERED	TURNOUT	VOTED	REGISTERED	TURNOUT	VOTED	REGISTERED	TURNOUT
CITY									
Leg. Dist. 07	107	274	39.05%	58	142	40.85%	49	132	37.12%
Leg. Dist. 16	23	124	18.55%	12	51	23.53%	11	73	15.07%
Leg. Dist. 21	642	2,427	26.45%	350	1,150	30.43%	292	1,277	22.87%
Leg. Dist. 22	225	1,820	12.36%	110	755	14.57%	115	1,065	10.80%
Leg. Dist. 23	1,052	2,854	36.86%	616	1,512	40.74%	436	1,342	32.49%
Leg. Dist. 24	545	1,755	31.05%	319	918	34.75%	226	837	27.00%
Leg. Dist. 25	380	1,726	22.02%	208	848	24.53%	172	878	19.59%
Leg. Dist. 26	506	1,776	28.49%	256	840	30.48%	250	936	26.71%
Leg. Dist. 27	500	2,098	23.83%	260	1,001	25.97%	240	1,097	21.88%
Leg. Dist. 28	328	1,929	17.00%	160	815	19.63%	168	1,114	15.08%
Leg. Dist. 29	331	1,954	16.94%	167	854	19.56%	164	1,100	14.91%
CITY TOTAL:	4,639	18,737	24.76%	2,516	8,886	28.31%	2,123	9,851	21.55%
TOWNS									
Brighton	1,227	5,105	24.04%	669	2,522	26.53%	558	2,583	21.60%
Chili	864	4,603	18.77%	499	2,282	21.87%	365	2,321	15.73%
Clarkson	180	894	20.13%	102	423	24.11%	78	471	16.56%
East Rochester	280	961	29.14%	145	447	32.44%	135	514	26.26%
Gates	783	4,128	18.97%	414	1,952	21.21%	369	2,176	16.96%
Greece	3,817	15,282	24.98%	2,013	7,201	27.95%	1,804	8,081	22.32%
Hamlin	352	1,296	27.16%	197	623	31.62%	155	673	23.03%
Henrietta	1,584	5,252	30.16%	853	2,653	32.15%	731	2,599	28.13%
Irondequoit	2,538	8,482	29.92%	1,300	4,020	32.34%	1,238	4,462	27.75%
Mendon	407	1,556	26.16%	213	776	27.45%	194	780	24.87%
Ogden	551	3,176	17.35%	313	1,537	20.36%	238	1,639	14.52%
Parma	616	2,702	22.80%	330	1,328	24.85%	286	1,374	20.82%
Penfield	1,567	6,558	23.89%	869	3,228	26.92%	698	3,330	20.96%
Perinton	1,787	8,374	21.34%	1,010	4,171	24.21%	777	4,203	18.49%
Pittsford	1,209	4,851	24.92%	650	2,387	27.23%	559	2,464	22.69%
Riga	298	939	31.74%	161	471	34.18%	137	468	29.27%
Rush	279	663	42.08%	138	337	40.95%	141	326	43.25%
Sweden	266	1,527	17.42%	146	706	20.68%	120	821	14.62%
Webster	1,496	7,578	19.74%	843	3,647	23.11%	653	3,931	16.61%
Wheatland	127	747	17.00%	70	358	19.55%	57	389	14.65%
TOWNS TOTAL:	20,228	84,674	23.89%	10,935	41,069	26.63%	9,293	43,605	21.31%
GRAND TOTAL:	24,867	103,411	24.05%	13,451	49,955	26.93%	11,416	53,456	21.36%

2013 GENERAL ELECTION
BLANK TURNOUT BY AGE

LT/LD SUMMARY
Part 1 of 2

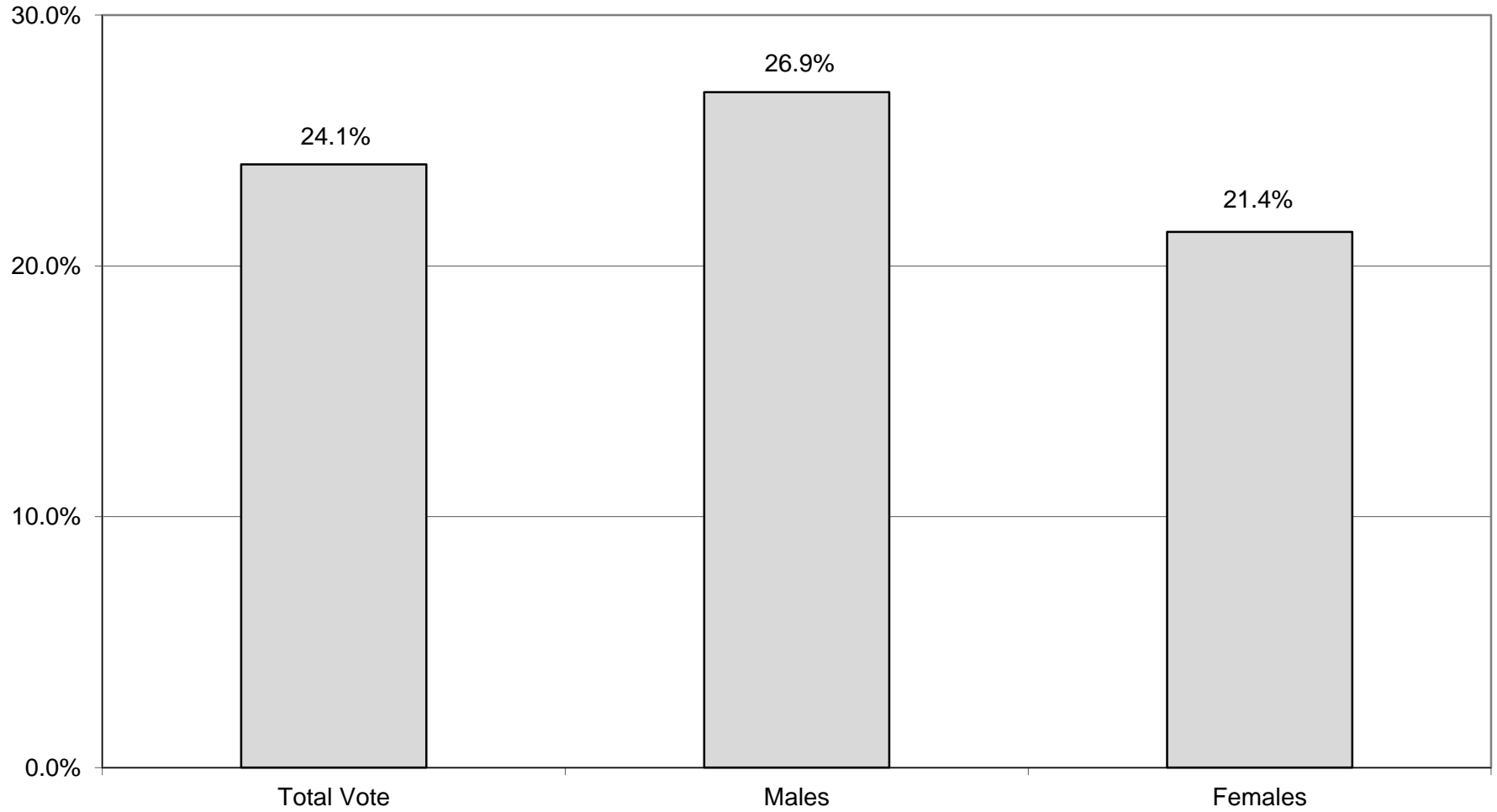
LEGISLATIVE DISTRICT OR TOWN CITY	NDOB			18-24			25-34			35-44		
	VOTED	REGISTERED	TURNOUT	VOTED	REGISTERED	TURNOUT	VOTED	REGISTERED	TURNOUT	VOTED	REGISTERED	TURNOUT
Leg. Dist. 07	0	0	0.00%	2	18	11.11%	9	37	24.32%	8	40	20.00%
Leg. Dist. 16	0	0	0.00%	1	16	6.25%	3	35	8.57%	1	25	4.00%
Leg. Dist. 21	3	5	60.00%	20	314	6.37%	112	637	17.58%	112	464	24.14%
Leg. Dist. 22	1	4	25.00%	17	356	4.78%	31	439	7.06%	38	363	10.47%
Leg. Dist. 23	7	9	77.78%	25	249	10.04%	192	907	21.17%	175	459	38.13%
Leg. Dist. 24	2	4	50.00%	24	238	10.08%	103	527	19.54%	87	282	30.85%
Leg. Dist. 25	1	1	100.00%	17	246	6.91%	79	505	15.64%	53	311	17.04%
Leg. Dist. 26	1	2	50.00%	19	163	11.66%	54	386	13.99%	63	304	20.72%
Leg. Dist. 27	3	5	60.00%	36	334	10.78%	81	503	16.10%	65	354	18.36%
Leg. Dist. 28	2	5	40.00%	16	293	5.46%	45	492	9.15%	44	365	12.05%
Leg. Dist. 29	1	4	25.00%	17	321	5.30%	36	462	7.79%	42	339	12.39%
CITY TOTAL:	21	39	53.85%	194	2,548	7.61%	745	4,930	15.11%	688	3,306	20.81%
TOWNS												
Brighton	10	17	58.82%	23	428	5.37%	81	897	9.03%	130	750	17.33%
Chili	2	13	15.38%	22	454	4.85%	47	874	5.38%	77	760	10.13%
Clarkson	0	0	0.00%	2	78	2.56%	9	137	6.57%	19	179	10.61%
East Rochester	1	4	25.00%	9	103	8.74%	25	204	12.25%	25	144	17.36%
Gates	2	3	66.67%	19	374	5.08%	50	787	6.35%	67	677	9.90%
Greece	20	45	44.44%	65	1,499	4.34%	198	2,760	7.17%	261	2,206	11.83%
Hamlin	0	1	0.00%	8	140	5.71%	21	224	9.38%	46	200	23.00%
Henrietta	5	8	62.50%	54	469	11.51%	102	961	10.61%	168	902	18.63%
Irondequoit	16	40	40.00%	46	720	6.39%	182	1,520	11.97%	239	1,333	17.93%
Mendon	1	1	100.00%	7	192	3.65%	14	202	6.93%	43	207	20.77%
Ogden	3	9	33.33%	17	296	5.74%	32	543	5.89%	40	517	7.74%
Parma	1	2	50.00%	10	267	3.75%	30	468	6.41%	49	428	11.45%
Penfield	6	20	30.00%	34	573	5.93%	54	942	5.73%	124	981	12.64%
Perinton	1	9	11.11%	43	982	4.38%	60	1,148	5.23%	124	1,174	10.56%
Pittsford	2	6	33.33%	17	534	3.18%	39	552	7.07%	113	710	15.92%
Riga	0	1	0.00%	17	103	16.50%	19	140	13.57%	21	127	16.54%
Rush	0	0	0.00%	6	62	9.68%	13	84	15.48%	18	74	24.32%
Sweden	0	0	0.00%	3	146	2.05%	12	264	4.55%	24	245	9.80%
Webster	9	23	39.13%	23	642	3.58%	62	1,035	5.99%	104	1,156	9.00%
Wheatland	0	1	0.00%	3	66	4.55%	7	150	4.67%	11	86	12.79%
TOWNS TOTAL:	79	203	38.92%	428	8,128	5.27%	1,057	13,892	7.61%	1,703	12,856	13.25%
GRAND TOTAL:	100	242	41.32%	622	10,676	5.83%	1,802	18,822	9.57%	2,391	16,162	14.79%

2013 GENERAL ELECTION
BLANK TURNOUT BY AGE

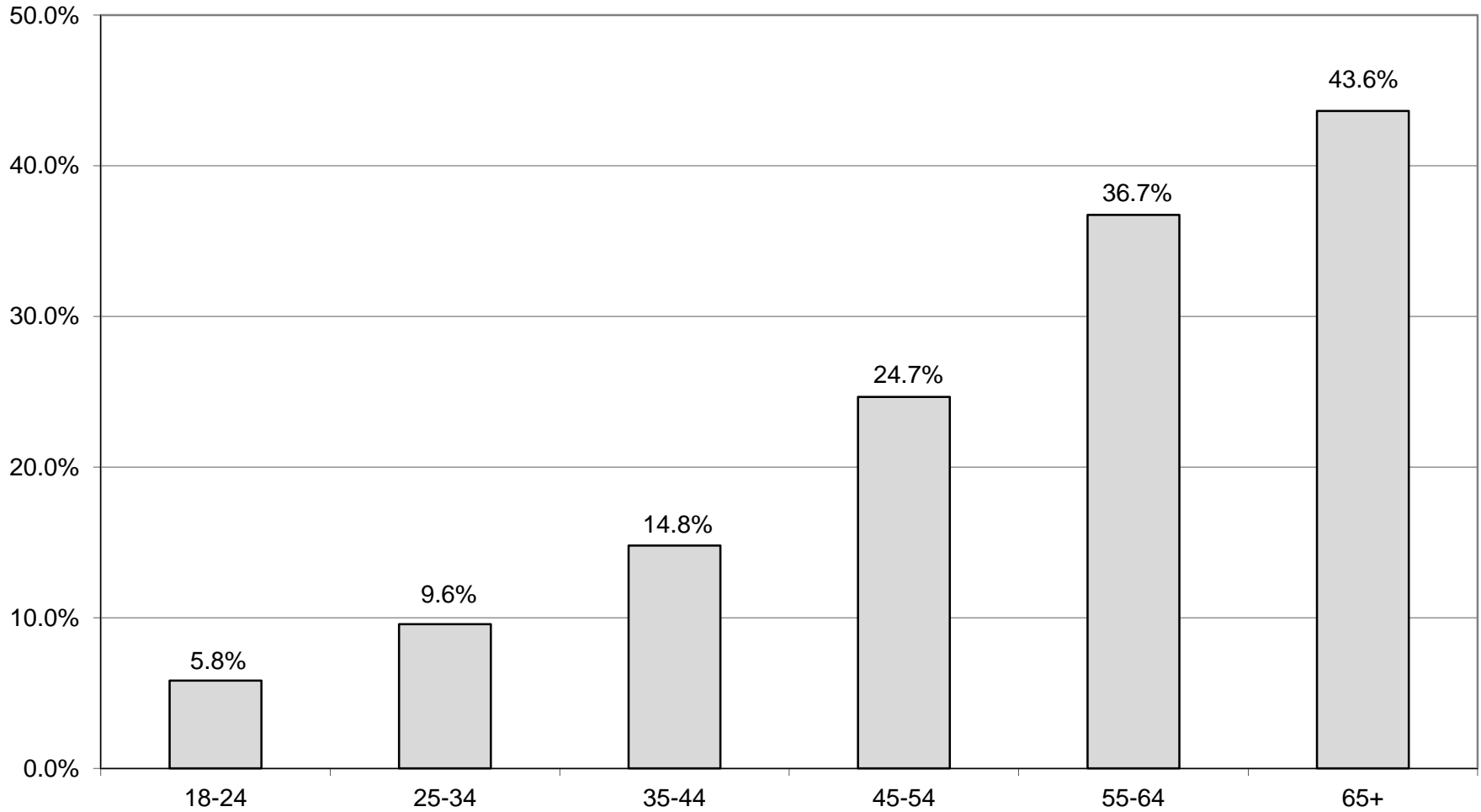
LT/LD SUMMARY
Part 2 of 2

LEGISLATIVE DISTRICT OR TOWN	45-54			55-64			65+		
	VOTED	REGISTERED	TURNOUT	VOTED	REGISTERED	TURNOUT	VOTED	REGISTERED	TURNOUT
CITY									
Leg. Dist. 07	15	50	30.00%	38	70	54.29%	35	59	59.32%
Leg. Dist. 16	9	18	50.00%	5	17	29.41%	4	13	30.77%
Leg. Dist. 21	126	417	30.22%	142	324	43.83%	127	266	47.74%
Leg. Dist. 22	44	290	15.17%	46	203	22.66%	48	165	29.09%
Leg. Dist. 23	186	411	45.26%	239	442	54.07%	228	377	60.48%
Leg. Dist. 24	100	242	41.32%	126	245	51.43%	103	217	47.47%
Leg. Dist. 25	77	265	29.06%	81	222	36.49%	72	176	40.91%
Leg. Dist. 26	110	327	33.64%	168	372	45.16%	91	222	40.99%
Leg. Dist. 27	74	326	22.70%	130	326	39.88%	111	250	44.40%
Leg. Dist. 28	76	335	22.69%	89	265	33.58%	56	174	32.18%
Leg. Dist. 29	73	302	24.17%	88	307	28.66%	74	219	33.79%
CITY TOTAL:	890	2,983	29.84%	1,152	2,793	41.25%	949	2,138	44.39%
TOWNS									
Brighton	195	914	21.33%	336	980	34.29%	452	1,119	40.39%
Chili	164	878	18.68%	309	963	32.09%	243	661	36.76%
Clarkson	53	216	24.54%	65	192	33.85%	32	92	34.78%
East Rochester	59	182	32.42%	73	164	44.51%	88	160	55.00%
Gates	153	841	18.19%	194	696	27.87%	298	750	39.73%
Greece	734	2,847	25.78%	1,288	3,288	39.17%	1,251	2,637	47.44%
Hamlin	79	298	26.51%	116	277	41.88%	82	156	52.56%
Henrietta	318	1,000	31.80%	455	1,019	44.65%	482	893	53.98%
Irondequoit	492	1,550	31.74%	780	1,741	44.80%	783	1,578	49.62%
Mendon	84	360	23.33%	138	348	39.66%	120	246	48.78%
Ogden	113	701	16.12%	185	660	28.03%	161	450	35.78%
Parma	138	583	23.67%	214	589	36.33%	174	365	47.67%
Penfield	317	1,303	24.33%	512	1,438	35.61%	520	1,301	39.97%
Perinton	320	1,620	19.75%	558	1,721	32.42%	681	1,720	39.59%
Pittsford	257	1,004	25.60%	312	938	33.26%	469	1,107	42.37%
Riga	65	215	30.23%	94	203	46.31%	82	150	54.67%
Rush	65	142	45.77%	87	165	52.73%	90	136	66.18%
Sweden	48	301	15.95%	98	343	28.57%	81	228	35.53%
Webster	286	1,604	17.83%	476	1,680	28.33%	536	1,438	37.27%
Wheatland	26	150	17.33%	49	191	25.65%	31	103	30.10%
TOWNS TOTAL:	3,966	16,709	23.74%	6,339	17,596	36.03%	6,656	15,290	43.53%
GRAND TOTAL:	4,856	19,692	24.66%	7,491	20,389	36.74%	7,605	17,428	43.64%

BLANK TURNOUT - TOTAL AND GENDER 2013 GENERAL ELECTION

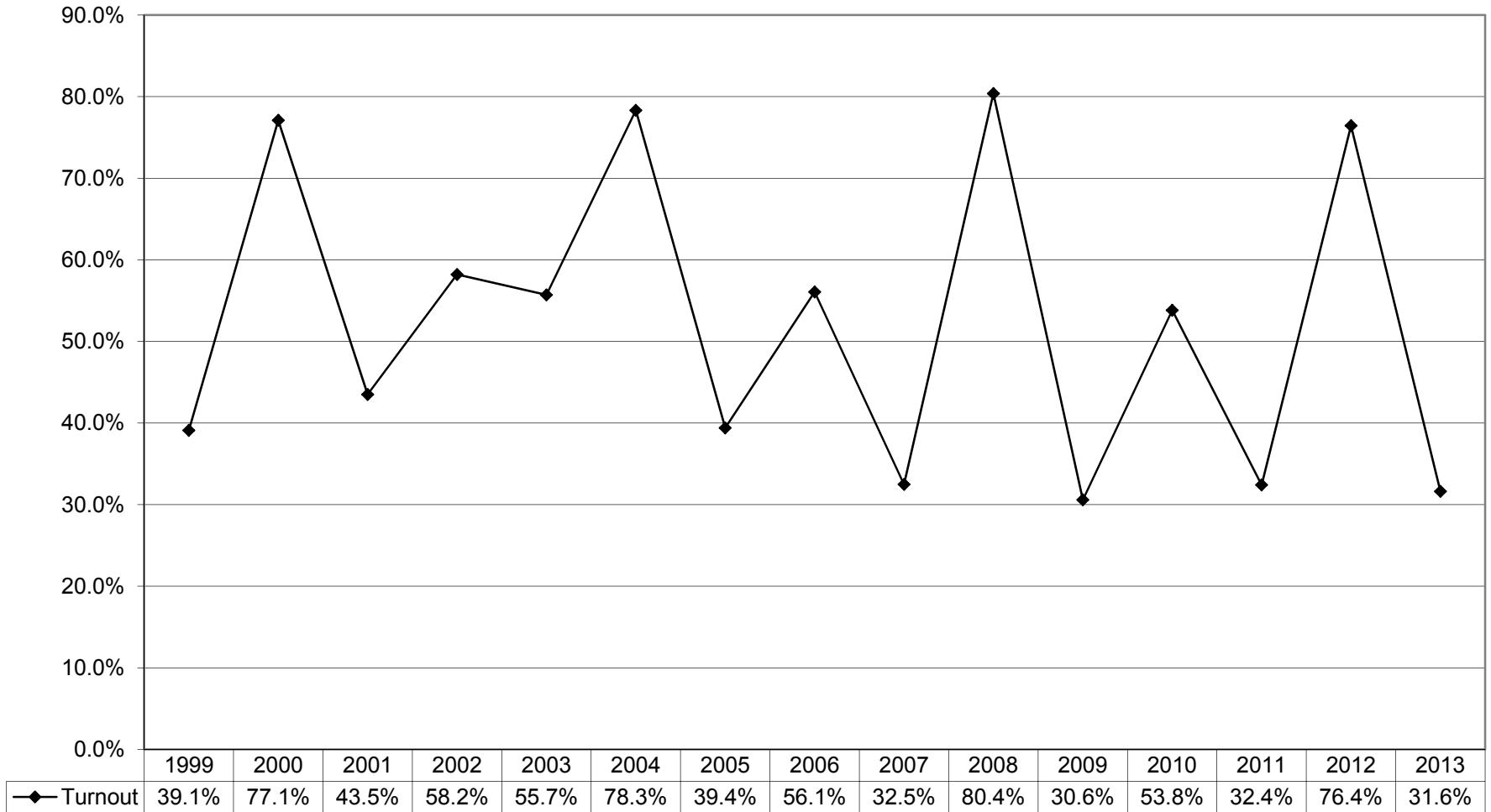


BLANKS TURNOUT BY AGE GROUP 2013 GENERAL ELECTION



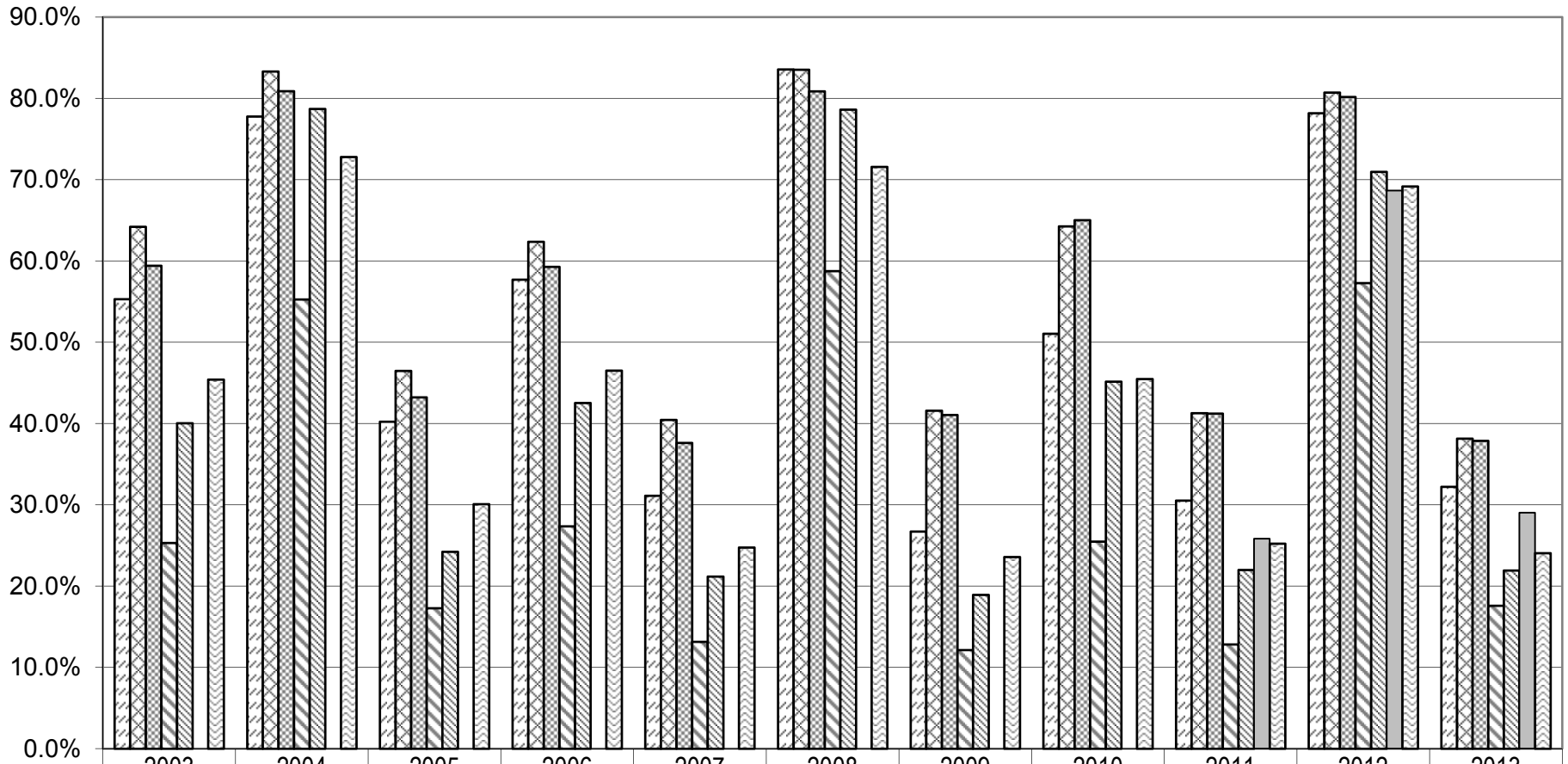
HISTORICAL DATA

VOTER TURNOUT FOR THE GENERAL ELECTION 1999 Through 2013



VOTER TURNOUT BY PARTY

2003 Through 2013 General Elections



	2003	2004	2005	2006	2007	2008	2009	2010	2011	2012	2013
Democrats	55.3%	77.8%	40.2%	57.7%	31.1%	83.6%	26.7%	51.0%	30.5%	78.2%	32.2%
Republicans	64.2%	83.3%	46.5%	62.4%	40.4%	83.5%	41.6%	64.3%	41.3%	80.7%	38.2%
Conservative	59.4%	80.9%	43.2%	59.3%	37.6%	80.9%	41.1%	65.0%	41.2%	80.2%	37.9%
Working Families	25.3%	55.3%	17.3%	27.4%	13.2%	58.8%	12.1%	25.5%	12.8%	57.3%	17.6%
Independence	40.0%	78.7%	24.2%	42.5%	21.2%	78.6%	18.9%	45.2%	22.0%	71.0%	21.9%
Green					Party Not	Constituted			25.8%	68.7%	29.0%
Blanks	45.4%	72.8%	30.1%	46.5%	24.7%	71.6%	23.6%	45.5%	25.2%	69.2%	24.1%