



# **VOTER TURNOUT SUMMARY REPORT 2015 GENERAL ELECTION**

Monroe County Board of Elections  
39 West Main Street, Rochester, New York 14614

**January 12, 2016**

Thomas F. Ferrarese  
Commissioner of Elections

David Van Varick  
Commissioner of Elections

# CONTENTS DESCRIPTION

General Summary.....	Page 1
Democratic Summary.....	Page 13
Republican Summary.....	Page 19
Conservative Summary.....	Page 25
Green Summary.....	Page 31
Working Families Summary.....	Page 37
Independence Summary.....	Page 45
Women's Equality Summary.....	Page 49
Blank Summary.....	Page 55
Historical Data.....	Page 61

# **GENERAL SUMMARY**

2015 GENERAL ELECTION  
VOTER TURNOUT BY GENDER

LT/LD SUMMARY

LEGISLATIVE DISTRICT OR TOWN	TOTAL VOTERS			MALES			FEMALES		
	VOTED	REGISTERED	TURNOUT	VOTED	REGISTERED	TURNOUT	VOTED	REGISTERED	TURNOUT
CITY									
Leg. Dist. 07	368	1,138	32.34%	177	517	34.24%	191	621	30.76%
Leg. Dist. 16	7	11	63.64%	2	3	66.67%	5	8	62.50%
Leg. Dist. 21	2,745	11,460	23.95%	1,225	4,869	25.16%	1,520	6,591	23.06%
Leg. Dist. 22	1,411	10,068	14.01%	602	4,142	14.53%	809	5,926	13.65%
Leg. Dist. 23	4,058	11,061	36.69%	2,099	5,444	38.56%	1,959	5,617	34.88%
Leg. Dist. 24	2,440	6,991	34.90%	1,182	3,282	36.01%	1,258	3,709	33.92%
Leg. Dist. 25	2,207	10,360	21.30%	1,027	4,522	22.71%	1,180	5,838	20.21%
Leg. Dist. 26	2,242	7,631	29.38%	1,012	3,232	31.31%	1,230	4,399	27.96%
Leg. Dist. 27	2,889	13,455	21.47%	1,175	5,654	20.78%	1,714	7,801	21.97%
Leg. Dist. 28	1,457	9,288	15.69%	660	3,846	17.16%	797	5,442	14.65%
Leg. Dist. 29	1,929	11,003	17.53%	831	4,561	18.22%	1,098	6,442	17.04%
CITY TOTAL:	21,753	92,466	23.53%	9,992	40,072	24.94%	11,761	52,394	22.45%
TOWNS									
Brighton	8,265	21,106	39.16%	3,755	9,347	40.17%	4,510	11,759	38.35%
Chili	5,513	18,206	30.28%	2,741	8,520	32.17%	2,772	9,686	28.62%
Clarkson	1,039	3,843	27.04%	538	1,835	29.32%	501	2,008	24.95%
East Rochester	1,146	3,564	32.15%	539	1,632	33.03%	607	1,932	31.42%
Gates	5,553	17,186	32.31%	2,609	7,638	34.16%	2,944	9,548	30.83%
Greece	16,286	59,255	27.48%	8,050	26,744	30.10%	8,236	32,511	25.33%
Hamlin	1,379	5,150	26.78%	741	2,489	29.77%	638	2,661	23.98%
Henrietta	9,428	21,799	43.25%	4,480	10,201	43.92%	4,948	11,598	42.66%
Irondequoit	11,857	32,703	36.26%	5,621	14,545	38.65%	6,236	18,158	34.34%
Mendon	1,976	6,397	30.89%	1,018	3,104	32.80%	958	3,293	29.09%
Ogden	3,530	12,369	28.54%	1,796	5,780	31.07%	1,734	6,589	26.32%
Parma	2,650	10,124	26.18%	1,376	4,870	28.25%	1,274	5,254	24.25%
Penfield	7,968	24,959	31.92%	3,936	11,555	34.06%	4,032	13,404	30.08%
Perinton	11,209	32,332	34.67%	5,557	15,008	37.03%	5,652	17,324	32.63%
Pittsford	6,996	19,230	36.38%	3,437	8,905	38.60%	3,559	10,325	34.47%
Riga	1,306	3,776	34.59%	640	1,778	36.00%	666	1,998	33.33%
Rush	1,194	2,521	47.36%	601	1,216	49.42%	593	1,305	45.44%
Sweden	2,403	6,001	40.04%	1,161	2,784	41.70%	1,242	3,217	38.61%
Webster	8,451	28,097	30.08%	4,210	12,954	32.50%	4,241	15,143	28.01%
Wheatland	981	3,070	31.95%	503	1,440	34.93%	478	1,630	29.33%
TOWNS TOTAL:	109,130	331,688	32.90%	53,309	152,345	34.99%	55,821	179,343	31.13%
GRAND TOTAL:	130,883	424,154	30.86%	63,301	192,417	32.90%	67,582	231,737	29.16%

2015 GENERAL ELECTION  
VOTER TURNOUT BY PARTY

LT/LD SUMMARY  
Part 1 of 3

LEGISLATIVE DISTRICT OR TOWN	DEMOCRAT			REPUBLICAN			CONSERVATIVE		
	VOTED	REGISTERED	TURNOUT	VOTED	REGISTERED	TURNOUT	VOTED	REGISTERED	TURNOUT
CITY									
Leg. Dist. 07	146	480	30.42%	105	282	37.23%	14	24	58.33%
Leg. Dist. 16	3	5	60.00%	1	3	33.33%	0	0	0.00%
Leg. Dist. 21	1,774	7,237	24.51%	423	1,297	32.61%	31	84	36.90%
Leg. Dist. 22	1,159	7,527	15.40%	116	534	21.72%	10	49	20.41%
Leg. Dist. 23	2,400	5,669	42.34%	727	1,925	37.77%	39	112	34.82%
Leg. Dist. 24	1,518	3,861	39.32%	353	964	36.62%	19	56	33.93%
Leg. Dist. 25	1,742	7,596	22.93%	176	725	24.28%	19	47	40.43%
Leg. Dist. 26	1,076	3,786	28.42%	619	1,514	40.89%	71	169	42.01%
Leg. Dist. 27	2,230	9,976	22.35%	295	970	30.41%	29	91	31.87%
Leg. Dist. 28	952	6,061	15.71%	260	981	26.50%	30	87	34.48%
Leg. Dist. 29	1,369	7,417	18.46%	285	1,108	25.72%	28	120	23.33%
CITY TOTAL:	14,369	59,615	24.10%	3,360	10,303	32.61%	290	839	34.56%
TOWNS									
Brighton	4,217	9,623	43.82%	2,108	5,071	41.57%	89	215	41.40%
Chili	1,610	5,680	28.35%	2,511	6,525	38.48%	176	482	36.51%
Clarkson	229	950	24.11%	549	1,596	34.40%	41	122	33.61%
East Rochester	405	1,195	33.89%	413	1,058	39.04%	26	72	36.11%
Gates	1,955	6,461	30.26%	2,259	5,215	43.32%	176	397	44.33%
Greece	4,659	18,718	24.89%	7,331	20,527	35.71%	555	1,586	34.99%
Hamlin	263	1,140	23.07%	792	2,254	35.14%	38	144	26.39%
Henrietta	3,338	7,925	42.12%	3,650	6,885	53.01%	235	471	49.89%
Irondequoit	4,723	12,750	37.04%	3,887	9,030	43.05%	274	675	40.59%
Mendon	546	1,747	31.25%	924	2,590	35.68%	38	110	34.55%
Ogden	857	3,169	27.04%	1,757	4,937	35.59%	153	389	39.33%
Parma	567	2,422	23.41%	1,361	4,099	33.20%	97	273	35.53%
Penfield	2,481	7,597	32.66%	3,342	8,839	37.81%	158	436	36.24%
Perinton	3,348	9,778	34.24%	4,950	11,959	41.39%	183	493	37.12%
Pittsford	2,344	6,216	37.71%	3,011	6,981	43.13%	89	213	41.78%
Riga	276	817	33.78%	725	1,706	42.50%	44	102	43.14%
Rush	326	674	48.37%	525	1,003	52.34%	29	53	54.72%
Sweden	691	1,685	41.01%	1,035	2,224	46.54%	66	142	46.48%
Webster	2,430	8,309	29.25%	3,710	9,857	37.64%	223	643	34.68%
Wheatland	273	892	30.61%	450	1,139	39.51%	39	94	41.49%
TOWNS TOTAL:	35,538	107,748	32.98%	45,290	113,495	39.90%	2,729	7,112	38.37%
GRAND TOTAL:	49,907	167,363	29.82%	48,650	123,798	39.30%	3,019	7,951	37.97%

2015 GENERAL ELECTION  
VOTER TURNOUT BY PARTY

LT/LD SUMMARY

Part 2 of 3

LEGISLATIVE DISTRICT OR TOWN	GREEN			WORKING FAMILIES			INDEPENDENCE		
	VOTED	REGISTERED	TURNOUT	VOTED	REGISTERED	TURNOUT	VOTED	REGISTERED	TURNOUT
CITY									
Leg. Dist. 07	3	5	60.00%	1	6	16.67%	18	62	29.03%
Leg. Dist. 16	0	0	0.00%	0	0	0.00%	2	2	100.00%
Leg. Dist. 21	23	59	38.98%	10	75	13.33%	72	422	17.06%
Leg. Dist. 22	3	13	23.08%	8	81	9.88%	18	205	8.78%
Leg. Dist. 23	28	101	27.72%	13	39	33.33%	131	559	23.43%
Leg. Dist. 24	34	79	43.04%	8	25	32.00%	66	316	20.89%
Leg. Dist. 25	20	46	43.48%	7	60	11.67%	44	282	15.60%
Leg. Dist. 26	6	19	31.58%	9	54	16.67%	86	341	25.22%
Leg. Dist. 27	11	34	32.35%	5	68	7.35%	55	384	14.32%
Leg. Dist. 28	4	24	16.67%	4	78	5.13%	40	285	14.04%
Leg. Dist. 29	3	21	14.29%	4	78	5.13%	47	305	15.41%
CITY TOTAL:	135	401	33.67%	69	564	12.23%	579	3,163	18.31%
TOWNS									
Brighton	34	94	36.17%	10	38	26.32%	236	951	24.82%
Chili	11	40	27.50%	11	51	21.57%	164	851	19.27%
Clarkson	0	2	0.00%	0	14	0.00%	37	217	17.05%
East Rochester	3	15	20.00%	1	16	6.25%	65	238	27.31%
Gates	9	29	31.03%	10	71	14.08%	186	844	22.04%
Greece	27	112	24.11%	28	215	13.02%	529	2,926	18.08%
Hamlin	3	17	17.65%	2	20	10.00%	49	303	16.17%
Henrietta	15	41	36.59%	15	55	27.27%	358	1,016	35.24%
Irondequoit	29	121	23.97%	16	82	19.51%	442	1,661	26.61%
Mendon	7	27	25.93%	2	9	22.22%	73	344	21.22%
Ogden	1	25	4.00%	6	44	13.64%	105	630	16.67%
Parma	2	15	13.33%	10	49	20.41%	92	526	17.49%
Penfield	11	50	22.00%	4	44	9.09%	278	1,362	20.41%
Perinton	15	91	16.48%	8	46	17.39%	366	1,606	22.79%
Pittsford	9	42	21.43%	6	15	40.00%	233	888	26.24%
Riga	1	7	14.29%	0	13	0.00%	44	197	22.34%
Rush	3	6	50.00%	4	12	33.33%	46	111	41.44%
Sweden	10	19	52.63%	4	24	16.67%	104	362	28.73%
Webster	9	49	18.37%	7	59	11.86%	297	1,512	19.64%
Wheatland	2	7	28.57%	0	9	0.00%	36	179	20.11%
TOWNS TOTAL:	201	809	24.85%	144	886	16.25%	3,740	16,724	22.36%
GRAND TOTAL:	336	1,210	27.77%	213	1,450	14.69%	4,319	19,887	21.72%

2015 GENERAL ELECTION  
VOTER TURNOUT BY PARTY

LT/LD SUMMARY  
Part 3 of 3

LEGISLATIVE DISTRICT OR TOWN	WOMEN'S EQUALITY			REFORM			BLANK		
	VOTED	REGISTERED	TURNOUT	VOTED	REGISTERED	TURNOUT	VOTED	REGISTERED	TURNOUT
CITY									
Leg. Dist. 07	0	0	0.00%	0	0	0.00%	81	279	29.03%
Leg. Dist. 16	0	0	0.00%	0	0	0.00%	1	1	100.00%
Leg. Dist. 21	0	0	0.00%	0	0	0.00%	412	2,286	18.02%
Leg. Dist. 22	0	1	0.00%	0	0	0.00%	97	1,658	5.85%
Leg. Dist. 23	0	2	0.00%	0	0	0.00%	720	2,654	27.13%
Leg. Dist. 24	1	1	100.00%	0	0	0.00%	441	1,689	26.11%
Leg. Dist. 25	0	1	0.00%	0	0	0.00%	199	1,603	12.41%
Leg. Dist. 26	0	0	0.00%	0	0	0.00%	375	1,748	21.45%
Leg. Dist. 27	0	0	0.00%	0	0	0.00%	264	1,932	13.66%
Leg. Dist. 28	0	1	0.00%	0	0	0.00%	167	1,771	9.43%
Leg. Dist. 29	0	1	0.00%	0	0	0.00%	193	1,953	9.88%
CITY TOTAL:	1	7	14.29%	0	0	0.00%	2,950	17,574	16.79%
TOWNS									
Brighton	0	1	0.00%	0	0	0.00%	1,571	5,113	30.73%
Chili	0	0	0.00%	0	0	0.00%	1,030	4,577	22.50%
Clarkson	0	0	0.00%	0	0	0.00%	183	942	19.43%
East Rochester	0	0	0.00%	0	0	0.00%	233	970	24.02%
Gates	0	1	0.00%	0	0	0.00%	958	4,168	22.98%
Greece	0	1	0.00%	0	0	0.00%	3,157	15,170	20.81%
Hamlin	0	0	0.00%	0	0	0.00%	232	1,272	18.24%
Henrietta	0	2	0.00%	0	0	0.00%	1,817	5,404	33.62%
Irondequoit	0	1	0.00%	0	0	0.00%	2,486	8,383	29.66%
Mendon	0	0	0.00%	0	0	0.00%	386	1,570	24.59%
Ogden	0	1	0.00%	0	0	0.00%	651	3,174	20.51%
Parma	0	0	0.00%	0	0	0.00%	521	2,740	19.01%
Penfield	0	0	0.00%	0	0	0.00%	1,694	6,631	25.55%
Perinton	0	0	0.00%	0	0	0.00%	2,339	8,359	27.98%
Pittsford	0	1	0.00%	0	0	0.00%	1,304	4,874	26.75%
Riga	1	1	100.00%	0	0	0.00%	215	933	23.04%
Rush	0	0	0.00%	0	0	0.00%	261	662	39.43%
Sweden	0	1	0.00%	0	0	0.00%	493	1,544	31.93%
Webster	0	2	0.00%	0	0	0.00%	1,775	7,666	23.15%
Wheatland	0	0	0.00%	0	0	0.00%	181	750	24.13%
TOWNS TOTAL:	1	12	8.33%	0	0	0.00%	21,487	84,902	25.31%
GRAND TOTAL:	2	19	10.53%	0	0	0.00%	24,437	102,476	23.85%

2015 GENERAL ELECTION  
VOTER TURNOUT BY AGE

LT/LD SUMMARY  
Part 1 of 2

LEGISLATIVE DISTRICT OR TOWN	NDOB			18-24			25-34			35-44		
	VOTED	REGISTERED	TURNOUT	VOTED	REGISTERED	TURNOUT	VOTED	REGISTERED	TURNOUT	VOTED	REGISTERED	TURNOUT
Leg. Dist. 07	1	13	7.69%	4	55	7.27%	19	151	12.58%	26	116	22.41%
Leg. Dist. 16	1	1	100.00%	0	0	0.00%	0	0	0.00%	0	0	0.00%
Leg. Dist. 21	33	85	38.82%	46	855	5.38%	297	2,426	12.24%	361	2,081	17.35%
Leg. Dist. 22	14	30	46.67%	38	984	3.86%	107	2,085	5.13%	136	1,691	8.04%
Leg. Dist. 23	42	64	65.63%	70	627	11.16%	495	2,783	17.79%	444	1,640	27.07%
Leg. Dist. 24	17	44	38.64%	40	388	10.31%	334	1,827	18.28%	312	1,092	28.57%
Leg. Dist. 25	21	63	33.33%	44	914	4.81%	251	2,243	11.19%	233	1,570	14.84%
Leg. Dist. 26	16	47	34.04%	32	456	7.02%	164	1,413	11.61%	251	1,254	20.02%
Leg. Dist. 27	24	55	43.64%	83	1,173	7.08%	213	2,625	8.11%	310	2,175	14.25%
Leg. Dist. 28	7	35	20.00%	28	872	3.21%	94	1,878	5.01%	157	1,694	9.27%
Leg. Dist. 29	15	61	24.59%	22	940	2.34%	110	2,026	5.43%	162	1,784	9.08%
CITY TOTAL:	191	498	38.35%	407	7,264	5.60%	2,084	19,457	10.71%	2,392	15,097	15.84%
Brighton	86	185	46.49%	125	1,242	10.06%	428	3,030	14.13%	765	2,892	26.45%
Chili	78	191	40.84%	90	1,040	8.65%	302	2,797	10.80%	460	2,628	17.50%
Clarkson	2	9	22.22%	30	232	12.93%	41	489	8.38%	70	567	12.35%
East Rochester	19	48	39.58%	24	244	9.84%	87	611	14.24%	124	522	23.75%
Gates	25	69	36.23%	87	902	9.65%	269	2,571	10.46%	430	2,365	18.18%
Greece	189	595	31.76%	260	3,531	7.36%	761	8,727	8.72%	1,071	7,794	13.74%
Hamlin	6	17	35.29%	22	337	6.53%	50	710	7.04%	118	725	16.28%
Henrietta	30	53	56.60%	275	1,405	19.57%	641	3,343	19.17%	967	3,177	30.44%
Irondequoit	142	368	38.59%	184	1,686	10.91%	726	4,944	14.68%	1,115	4,656	23.95%
Mendon	2	16	12.50%	30	624	4.81%	76	701	10.84%	141	709	19.89%
Ogden	28	77	36.36%	73	699	10.44%	186	1,740	10.69%	281	1,849	15.20%
Parma	9	36	25.00%	40	706	5.67%	103	1,382	7.45%	199	1,377	14.45%
Penfield	65	193	33.68%	115	1,429	8.05%	301	3,093	9.73%	626	3,472	18.03%
Perinton	23	68	33.82%	178	2,492	7.14%	463	3,826	12.10%	935	4,162	22.47%
Pittsford	29	76	38.16%	123	1,408	8.74%	201	2,007	10.01%	559	2,411	23.19%
Riga	3	13	23.08%	27	222	12.16%	70	512	13.67%	90	473	19.03%
Rush	23	38	60.53%	28	156	17.95%	54	286	18.88%	81	262	30.92%
Sweden	8	17	47.06%	71	418	16.99%	108	841	12.84%	221	809	27.32%
Webster	73	205	35.61%	128	1,534	8.34%	326	3,363	9.69%	615	3,778	16.28%
Wheatland	7	10	70.00%	20	217	9.22%	57	491	11.61%	85	401	21.20%
TOWNS TOTAL:	847	2,284	37.08%	1,930	20,524	9.40%	5,250	45,464	11.55%	8,953	45,029	19.88%
GRAND TOTAL:	1,038	2,782	37.31%	2,337	27,788	8.41%	7,334	64,921	11.30%	11,345	60,126	18.87%



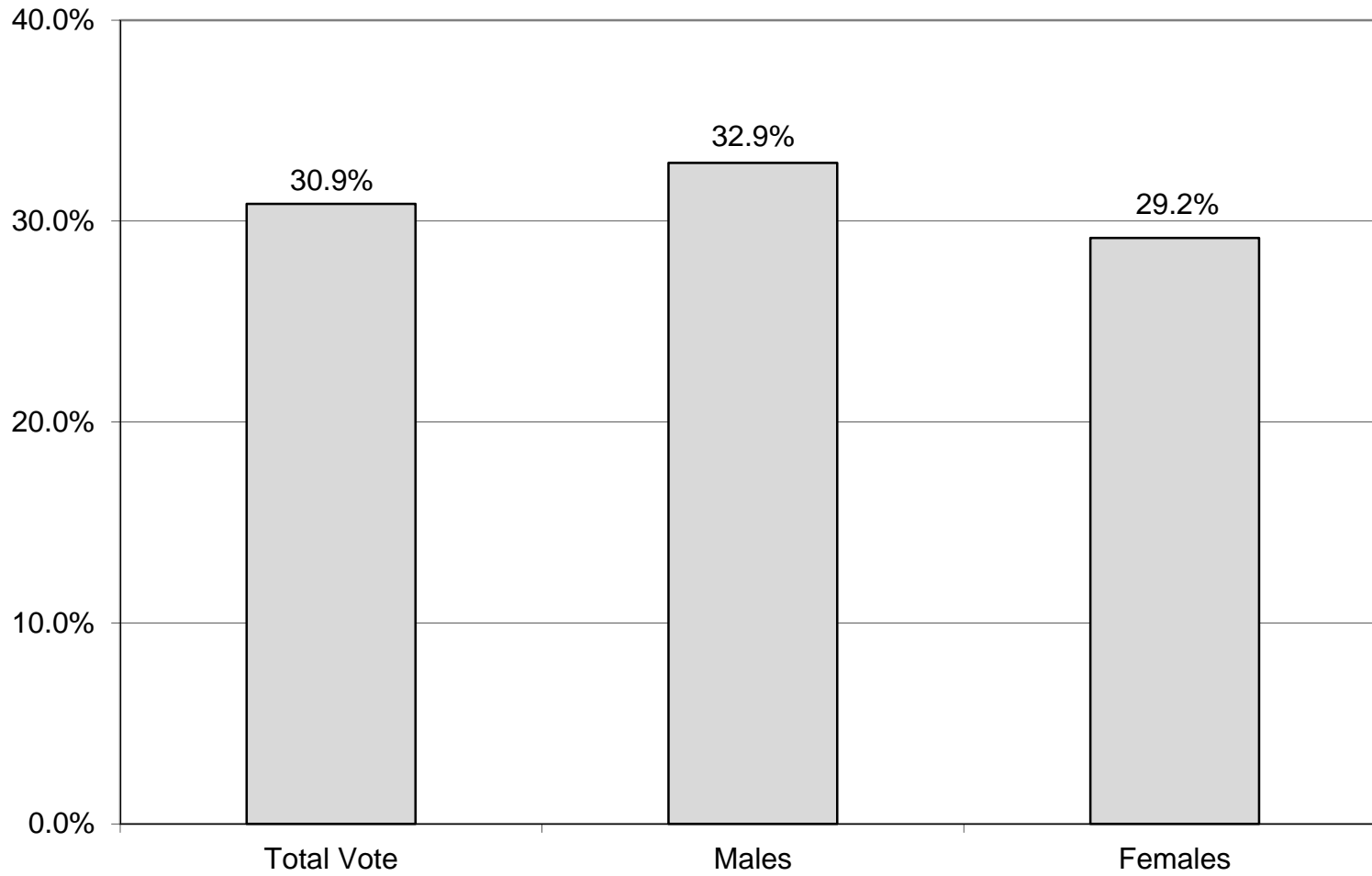
2015 GENERAL ELECTION  
VOTER TURNOUT BY AGE

LT/LD SUMMARY  
Part 2 of 2

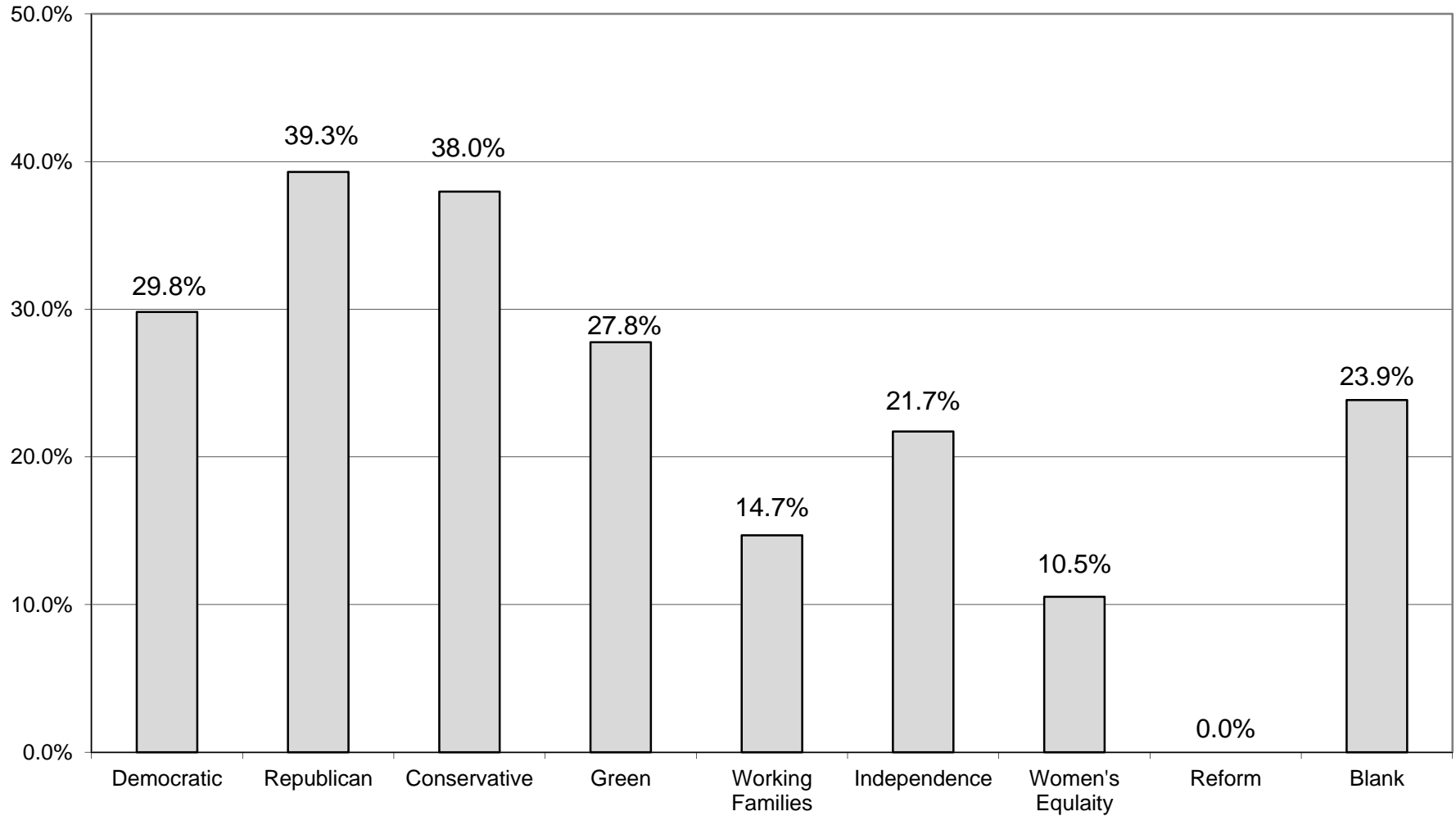
LEGISLATIVE  
DISTRICT

OR TOWN	45-54			55-64			65+		
	VOTED	REGISTERED	TURNOUT	VOTED	REGISTERED	TURNOUT	VOTED	REGISTERED	TURNOUT
Leg. Dist. 07	48	167	28.74%	122	299	40.80%	148	337	43.92%
Leg. Dist. 16	0	0	0.00%	1	3	33.33%	5	7	71.43%
Leg. Dist. 21	491	2,096	23.43%	670	1,992	33.63%	847	1,925	44.00%
Leg. Dist. 22	223	1,880	11.86%	427	1,719	24.84%	466	1,679	27.75%
Leg. Dist. 23	648	1,761	36.80%	979	1,928	50.78%	1,380	2,258	61.12%
Leg. Dist. 24	430	1,112	38.67%	650	1,315	49.43%	657	1,213	54.16%
Leg. Dist. 25	397	1,900	20.89%	539	1,728	31.19%	722	1,942	37.18%
Leg. Dist. 26	395	1,453	27.19%	659	1,563	42.16%	725	1,445	50.17%
Leg. Dist. 27	544	2,580	21.09%	777	2,412	32.21%	938	2,435	38.52%
Leg. Dist. 28	277	1,821	15.21%	481	1,679	28.65%	413	1,309	31.55%
Leg. Dist. 29	317	2,020	15.69%	580	2,045	28.36%	723	2,127	33.99%
CITY TOTAL:	3,770	16,790	22.45%	5,885	16,683	35.28%	7,024	16,677	42.12%
Brighton	1,380	3,671	37.59%	1,937	3,881	49.91%	3,544	6,205	57.12%
Chili	936	3,509	26.67%	1,435	3,675	39.05%	2,212	4,366	50.66%
Clarkson	231	902	25.61%	285	809	35.23%	380	835	45.51%
East Rochester	201	660	30.45%	306	704	43.47%	385	775	49.68%
Gates	859	3,207	26.79%	1,364	3,173	42.99%	2,519	4,899	51.42%
Greece	2,360	10,435	22.62%	4,459	12,399	35.96%	7,186	15,774	45.56%
Hamlin	249	1,045	23.83%	401	1,177	34.07%	533	1,139	46.80%
Henrietta	1,721	4,043	42.57%	2,392	4,316	55.42%	3,402	5,462	62.28%
Irondequoit	2,010	5,885	34.15%	3,159	6,627	47.67%	4,521	8,537	52.96%
Mendon	458	1,525	30.03%	566	1,441	39.28%	703	1,381	50.91%
Ogden	640	2,557	25.03%	1,044	2,683	38.91%	1,278	2,764	46.24%
Parma	439	1,941	22.62%	728	2,230	32.65%	1,132	2,452	46.17%
Penfield	1,378	4,950	27.84%	2,144	5,185	41.35%	3,339	6,637	50.31%
Perinton	1,909	6,388	29.88%	2,791	6,452	43.26%	4,910	8,944	54.90%
Pittsford	1,273	3,916	32.51%	1,749	3,918	44.64%	3,062	5,494	55.73%
Riga	237	792	29.92%	372	875	42.51%	507	889	57.03%
Rush	196	459	42.70%	375	663	56.56%	437	657	66.51%
Sweden	413	1,113	37.11%	684	1,329	51.47%	898	1,474	60.92%
Webster	1,423	5,801	24.53%	2,286	5,808	39.36%	3,600	7,608	47.32%
Wheatland	145	533	27.20%	280	665	42.11%	387	753	51.39%
TOWNS TOTAL:	18,458	63,332	29.14%	28,757	68,010	42.28%	44,935	87,045	51.62%
GRAND TOTAL:	22,228	80,122	27.74%	34,642	84,693	40.90%	51,959	103,722	50.09%

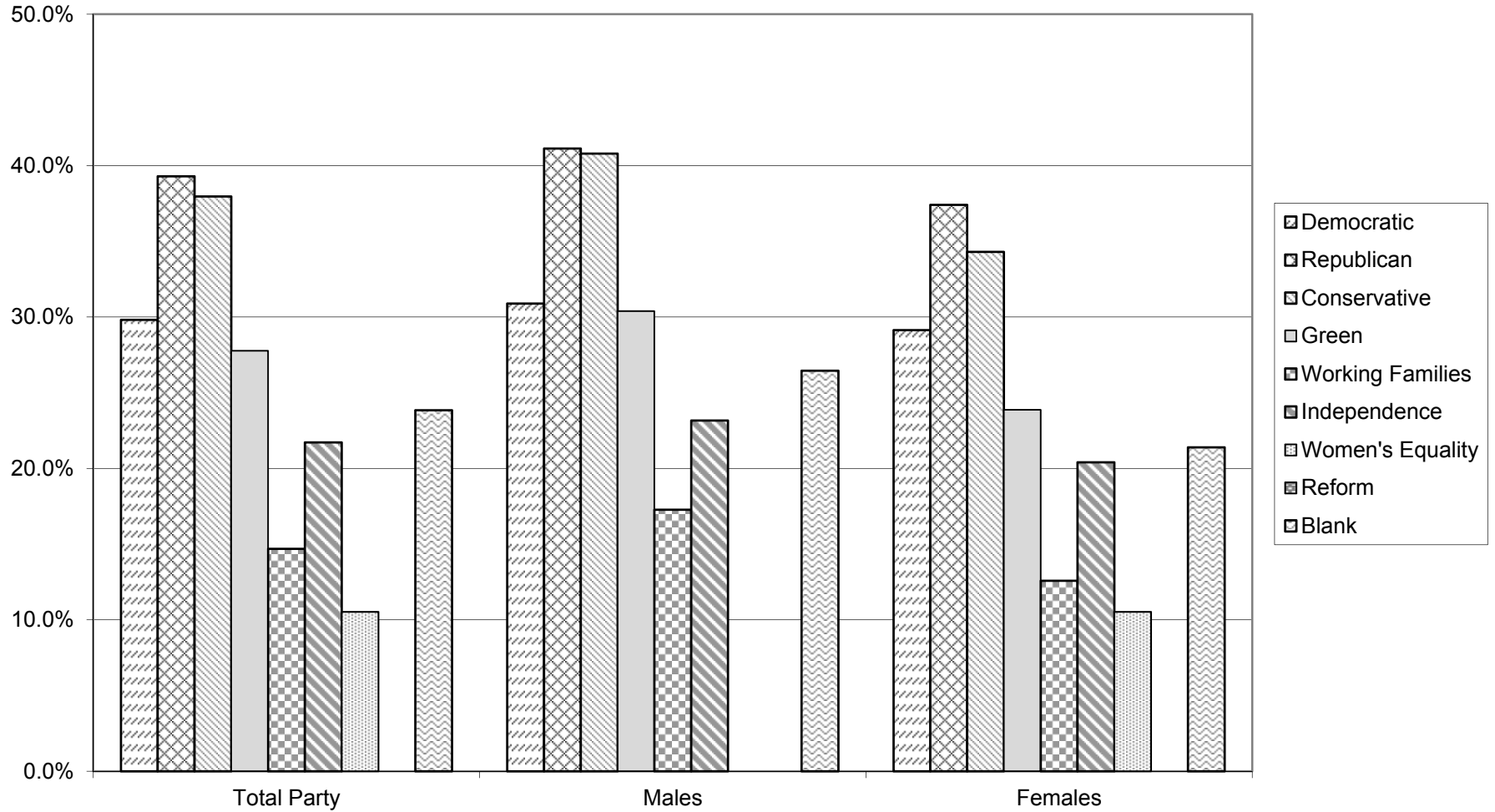
# VOTER TURNOUT - TOTAL AND BY GENDER 2015 GENERAL ELECTION



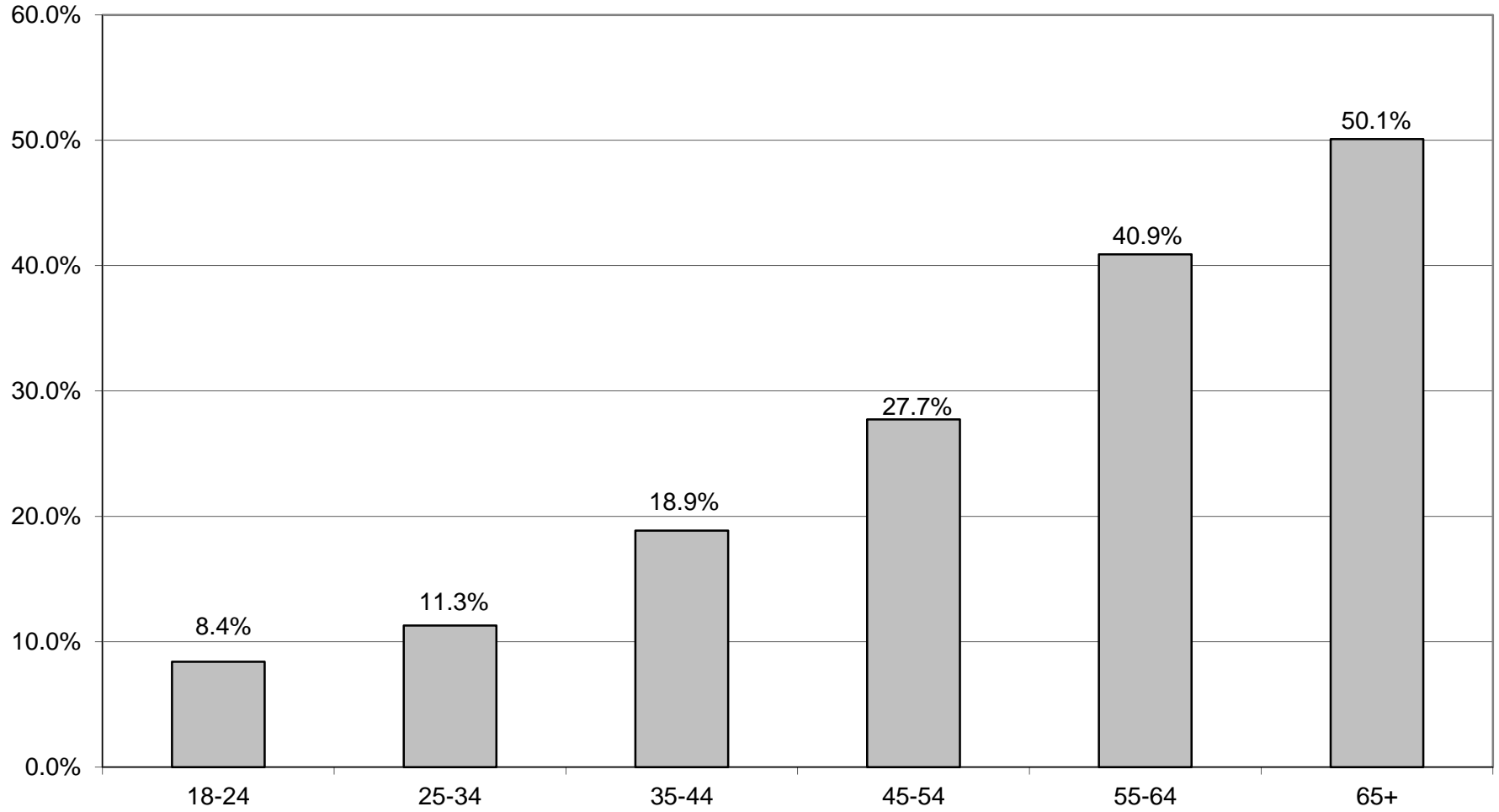
# VOTER TURNOUT BY PARTY 2015 GENERAL ELECTION



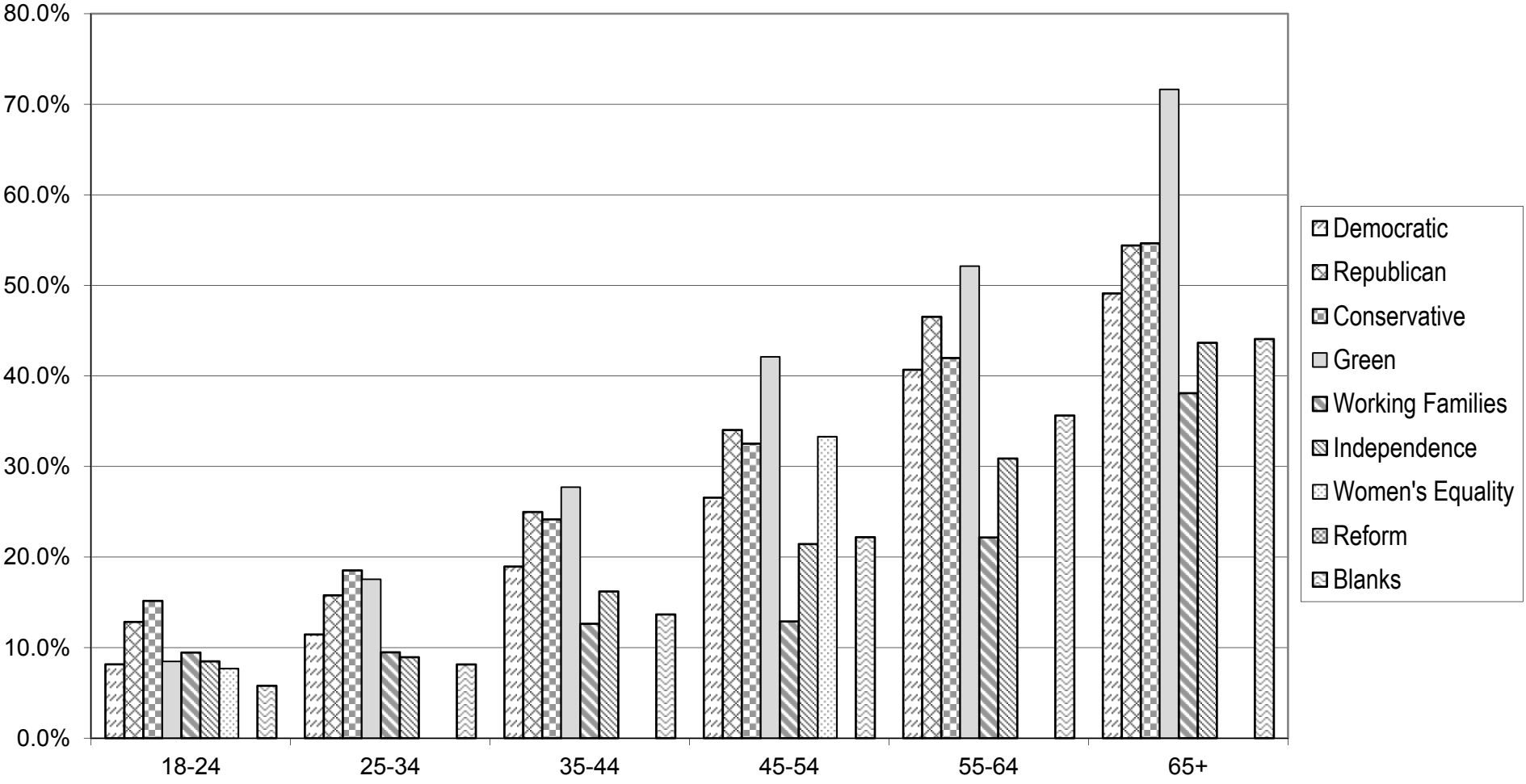
# COMPARISON OF TOTAL AND GENDER TURNOUT 2015 GENERAL ELECTION



## VOTER TURNOUT BY AGE GROUP 2015 GENERAL ELECTION



# COMPARISON OF TURNOUT BY AGE GROUP 2015 GENERAL ELECTION



# **DEMOCRATIC SUMMARY**

2015 GENERAL ELECTION  
DEMOCRATIC TURNOUT BY GENDER

LT/LD SUMMARY

LEGISLATIVE DISTRICT OR TOWN	TOTAL VOTERS			MALES			FEMALES		
	VOTED	REGISTERED	TURNOUT	VOTED	REGISTERED	TURNOUT	VOTED	REGISTERED	TURNOUT
CITY									
Leg. Dist. 07	146	480	30.42%	64	181	35.36%	82	299	27.42%
Leg. Dist. 16	3	5	60.00%	1	1	100.00%	2	4	50.00%
Leg. Dist. 21	1,774	7,237	24.51%	700	2,851	24.55%	1,074	4,386	24.49%
Leg. Dist. 22	1,159	7,527	15.40%	457	3,030	15.08%	702	4,497	15.61%
Leg. Dist. 23	2,400	5,669	42.34%	1,129	2,518	44.84%	1,271	3,151	40.34%
Leg. Dist. 24	1,518	3,861	39.32%	667	1,633	40.85%	851	2,228	38.20%
Leg. Dist. 25	1,742	7,596	22.93%	753	3,147	23.93%	989	4,449	22.23%
Leg. Dist. 26	1,076	3,786	28.42%	422	1,385	30.47%	654	2,401	27.24%
Leg. Dist. 27	2,230	9,976	22.35%	826	3,906	21.15%	1,404	6,070	23.13%
Leg. Dist. 28	952	6,061	15.71%	382	2,311	16.53%	570	3,750	15.20%
Leg. Dist. 29	1,369	7,417	18.46%	532	2,865	18.57%	837	4,552	18.39%
CITY TOTAL:	14,369	59,615	24.10%	5,933	23,828	24.90%	8,436	35,787	23.57%
TOWNS									
Brighton	4,217	9,623	43.82%	1,621	3,663	44.25%	2,596	5,960	43.56%
Chili	1,610	5,680	28.35%	672	2,279	29.49%	938	3,401	27.58%
Clarkson	229	950	24.11%	101	373	27.08%	128	577	22.18%
East Rochester	405	1,195	33.89%	164	478	34.31%	241	717	33.61%
Gates	1,955	6,461	30.26%	760	2,496	30.45%	1,195	3,965	30.14%
Greece	4,659	18,718	24.89%	1,854	6,992	26.52%	2,805	11,726	23.92%
Hamlin	263	1,140	23.07%	102	442	23.08%	161	698	23.07%
Henrietta	3,338	7,925	42.12%	1,301	3,130	41.57%	2,037	4,795	42.48%
Irondequoit	4,723	12,750	37.04%	1,857	4,770	38.93%	2,866	7,980	35.91%
Mendon	546	1,747	31.25%	232	702	33.05%	314	1,045	30.05%
Ogden	857	3,169	27.04%	336	1,193	28.16%	521	1,976	26.37%
Parma	567	2,422	23.41%	241	935	25.78%	326	1,487	21.92%
Penfield	2,481	7,597	32.66%	987	2,855	34.57%	1,494	4,742	31.51%
Perinton	3,348	9,778	34.24%	1,321	3,636	36.33%	2,027	6,142	33.00%
Pittsford	2,344	6,216	37.71%	967	2,390	40.46%	1,377	3,826	35.99%
Riga	276	817	33.78%	103	312	33.01%	173	505	34.26%
Rush	326	674	48.37%	134	273	49.08%	192	401	47.88%
Sweden	691	1,685	41.01%	276	662	41.69%	415	1,023	40.57%
Webster	2,430	8,309	29.25%	962	3,108	30.95%	1,468	5,201	28.23%
Wheatland	273	892	30.61%	110	342	32.16%	163	550	29.64%
TOWNS TOTAL:	35,538	107,748	32.98%	14,101	41,031	34.37%	21,437	66,717	32.13%
GRAND TOTAL:	49,907	167,363	29.82%	20,034	64,859	30.89%	29,873	102,504	29.14%



2015 GENERAL ELECTION  
DEMOCRATIC TURNOUT BY AGE

LT/LD SUMMARY  
Part 1 of 2

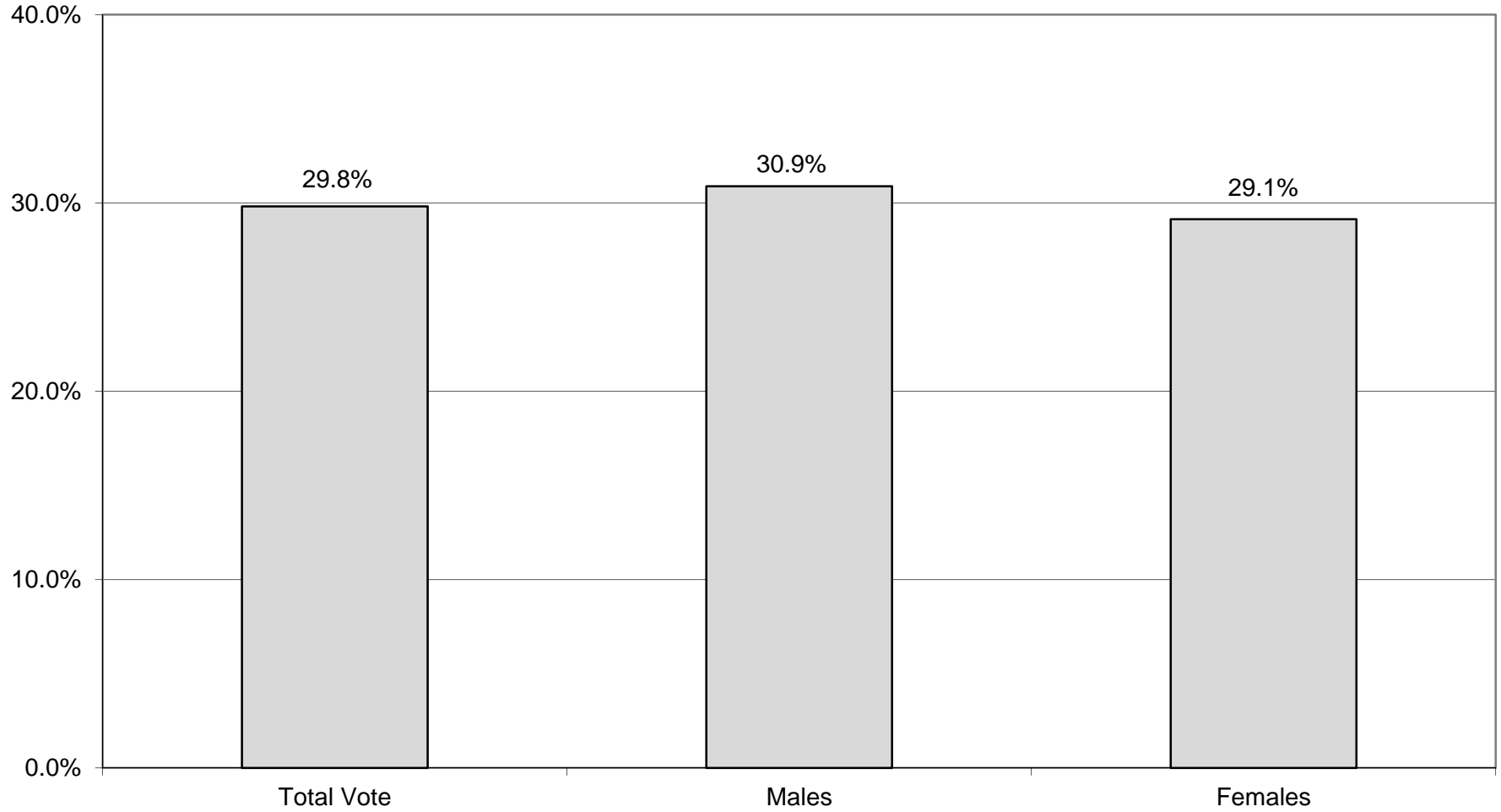
LEGISLATIVE DISTRICT OR TOWN CITY	NDOB			18-24			25-34			35-44		
	VOTED	REGISTERED	TURNOUT	VOTED	REGISTERED	TURNOUT	VOTED	REGISTERED	TURNOUT	VOTED	REGISTERED	TURNOUT
Leg. Dist. 07	0	4	0.00%	2	20	10.00%	7	70	10.00%	11	58	18.97%
Leg. Dist. 16	1	1	100.00%	0	0	0.00%	0	0	0.00%	0	0	0.00%
Leg. Dist. 21	15	32	46.88%	29	520	5.58%	182	1,478	12.31%	230	1,291	17.82%
Leg. Dist. 22	12	21	57.14%	29	619	4.68%	81	1,480	5.47%	111	1,222	9.08%
Leg. Dist. 23	18	25	72.00%	46	323	14.24%	274	1,273	21.52%	240	803	29.89%
Leg. Dist. 24	6	17	35.29%	22	216	10.19%	198	935	21.18%	195	588	33.16%
Leg. Dist. 25	18	39	46.15%	33	594	5.56%	172	1,518	11.33%	171	1,114	15.35%
Leg. Dist. 26	4	9	44.44%	17	249	6.83%	87	746	11.66%	129	657	19.63%
Leg. Dist. 27	17	32	53.13%	56	792	7.07%	161	1,941	8.29%	238	1,572	15.14%
Leg. Dist. 28	1	11	9.09%	19	547	3.47%	67	1,256	5.33%	117	1,151	10.17%
Leg. Dist. 29	7	25	28.00%	18	600	3.00%	81	1,319	6.14%	124	1,176	10.54%
CITY TOTAL:	99	216	45.83%	271	4,480	6.05%	1,310	12,016	10.90%	1,566	9,632	16.26%
TOWNS												
Brighton	25	50	50.00%	70	595	11.76%	212	1,360	15.59%	407	1,328	30.65%
Chili	30	63	47.62%	21	274	7.66%	99	908	10.90%	140	863	16.22%
Clarkson	0	4	0.00%	7	44	15.91%	5	122	4.10%	18	161	11.18%
East Rochester	5	19	26.32%	7	74	9.46%	38	214	17.76%	61	208	29.33%
Gates	6	17	35.29%	23	307	7.49%	100	1,043	9.59%	169	920	18.37%
Greece	47	148	31.76%	71	1,074	6.61%	224	3,068	7.30%	316	2,650	11.92%
Hamlin	0	3	0.00%	5	82	6.10%	17	185	9.19%	29	182	15.93%
Henrietta	9	19	47.37%	132	598	22.07%	247	1,305	18.93%	386	1,222	31.59%
Irondequoit	47	115	40.87%	68	641	10.61%	332	2,029	16.36%	496	1,877	26.43%
Mendon	1	2	50.00%	11	185	5.95%	17	220	7.73%	39	216	18.06%
Ogden	10	22	45.45%	14	154	9.09%	44	452	9.73%	67	504	13.29%
Parma	1	11	9.09%	6	170	3.53%	23	369	6.23%	50	331	15.11%
Penfield	15	56	26.79%	37	371	9.97%	99	1,011	9.79%	209	1,137	18.38%
Perinton	6	21	28.57%	52	772	6.74%	182	1,346	13.52%	351	1,454	24.14%
Pittsford	7	20	35.00%	39	469	8.32%	70	702	9.97%	195	838	23.27%
Riga	1	3	33.33%	4	35	11.43%	7	123	5.69%	19	107	17.76%
Rush	7	9	77.78%	5	43	11.63%	20	93	21.51%	21	75	28.00%
Sweden	3	7	42.86%	18	133	13.53%	36	238	15.13%	62	220	28.18%
Webster	14	66	21.21%	27	382	7.07%	103	993	10.37%	162	1,220	13.28%
Wheatland	1	3	33.33%	6	74	8.11%	14	149	9.40%	28	119	23.53%
TOWNS TOTAL:	235	658	35.71%	623	6,477	9.62%	1,889	15,930	11.86%	3,225	15,632	20.63%
GRAND TOTAL:	334	874	38.22%	894	10,957	8.16%	3,199	27,946	11.45%	4,791	25,264	18.96%

2015 GENERAL ELECTION  
DEMOCRATIC TURNOUT BY AGE

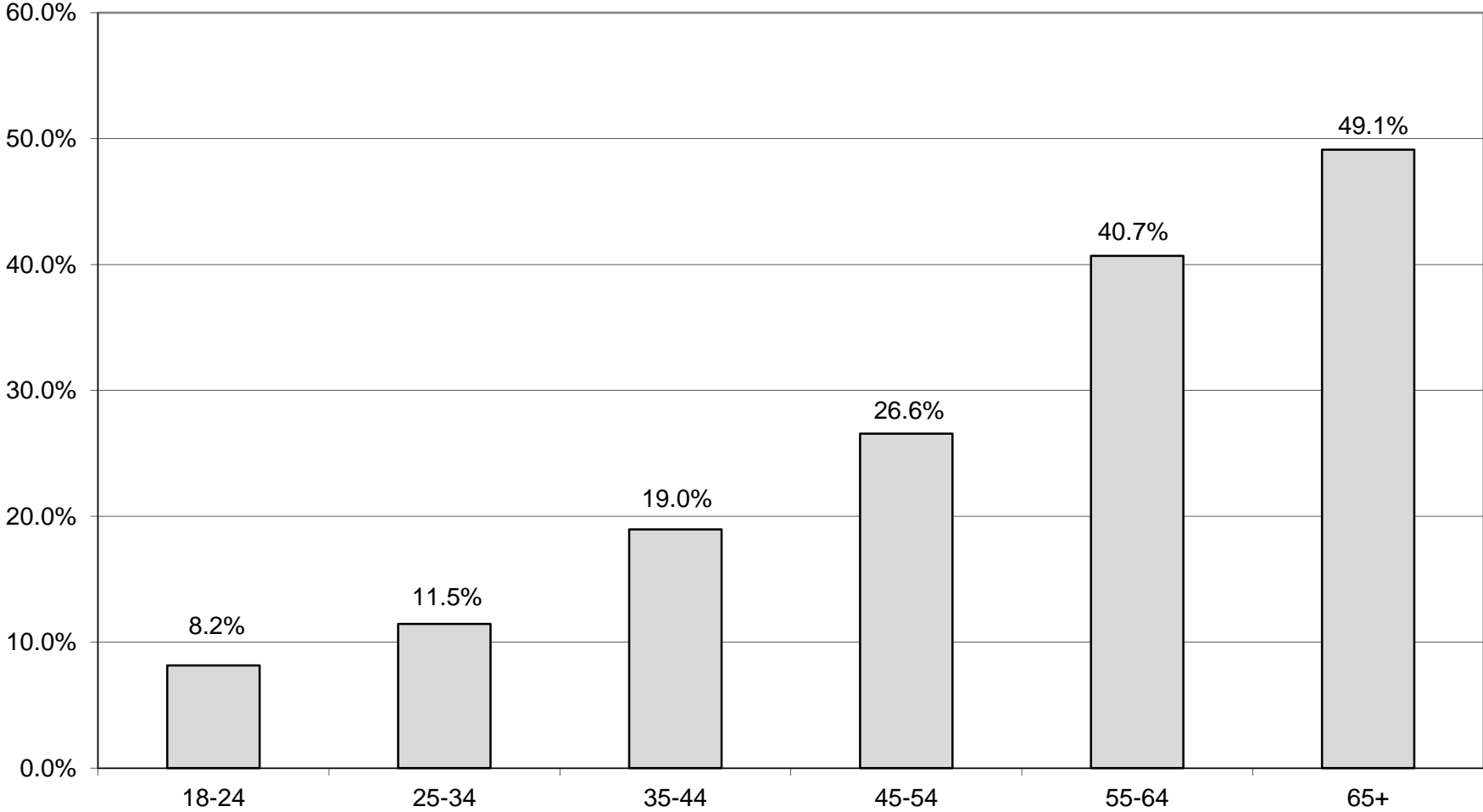
LT/LD SUMMARY  
Part 2 of 2

LEGISLATIVE DISTRICT OR TOWN	45-54			55-64			65+		
	VOTED	REGISTERED	TURNOUT	VOTED	REGISTERED	TURNOUT	VOTED	REGISTERED	TURNOUT
CITY									
Leg. Dist. 07	16	63	25.40%	52	120	43.33%	58	145	40.00%
Leg. Dist. 16	0	0	0.00%	0	0	0.00%	2	4	50.00%
Leg. Dist. 21	341	1,387	24.59%	442	1,296	34.10%	535	1,233	43.39%
Leg. Dist. 22	191	1,462	13.06%	348	1,367	25.46%	387	1,356	28.54%
Leg. Dist. 23	373	900	41.44%	579	1,045	55.41%	870	1,300	66.92%
Leg. Dist. 24	268	644	41.61%	425	781	54.42%	404	680	59.41%
Leg. Dist. 25	322	1,440	22.36%	439	1,348	32.57%	587	1,543	38.04%
Leg. Dist. 26	195	734	26.57%	309	745	41.48%	335	646	51.86%
Leg. Dist. 27	449	2,007	22.37%	602	1,783	33.76%	707	1,849	38.24%
Leg. Dist. 28	194	1,207	16.07%	305	1,106	27.58%	249	783	31.80%
Leg. Dist. 29	220	1,413	15.57%	415	1,416	29.31%	504	1,468	34.33%
CITY TOTAL:	2,569	11,257	22.82%	3,916	11,007	35.58%	4,638	11,007	42.14%
TOWNS									
Brighton	735	1,662	44.22%	990	1,822	54.34%	1,778	2,806	63.36%
Chili	233	1,031	22.60%	396	1,104	35.87%	691	1,437	48.09%
Clarkson	30	190	15.79%	58	191	30.37%	111	238	46.64%
East Rochester	47	193	24.35%	111	231	48.05%	136	256	53.13%
Gates	268	1,139	23.53%	435	1,101	39.51%	954	1,934	49.33%
Greece	588	3,081	19.08%	1,299	3,753	34.61%	2,114	4,944	42.76%
Hamlin	40	208	19.23%	68	215	31.63%	104	265	39.25%
Henrietta	584	1,353	43.16%	800	1,472	54.35%	1,180	1,956	60.33%
Irondequoit	747	2,258	33.08%	1,267	2,550	49.69%	1,766	3,280	53.84%
Mendon	136	422	32.23%	155	371	41.78%	187	331	56.50%
Ogden	130	575	22.61%	248	685	36.20%	344	777	44.27%
Parma	77	431	17.87%	152	524	29.01%	258	586	44.03%
Penfield	371	1,363	27.22%	675	1,564	43.16%	1,075	2,095	51.31%
Perinton	547	1,762	31.04%	814	1,856	43.86%	1,396	2,567	54.38%
Pittsford	388	1,182	32.83%	618	1,279	48.32%	1,027	1,726	59.50%
Riga	39	156	25.00%	90	199	45.23%	116	194	59.79%
Rush	48	113	42.48%	107	170	62.94%	118	171	69.01%
Sweden	99	290	34.14%	185	338	54.73%	288	459	62.75%
Webster	354	1,548	22.87%	691	1,695	40.77%	1,079	2,405	44.86%
Wheatland	30	136	22.06%	64	168	38.10%	130	243	53.50%
TOWNS TOTAL:	5,491	19,093	28.76%	9,223	21,288	43.32%	14,852	28,670	51.80%
GRAND TOTAL:	8,060	30,350	26.56%	13,139	32,295	40.68%	19,490	39,677	49.12%

# DEMOCRATIC TURNOUT - TOTAL AND GENDER 2015 GENERAL ELECTION



# DEMOCRATIC TURNOUT BY AGE GROUP 2015 GENERAL ELECTION



# **REPUBLICAN SUMMARY**

2015 GENERAL ELECTION  
REPUBLICAN TURNOUT BY GENDER

LT/LD SUMMARY

LEGISLATIVE DISTRICT OR TOWN	TOTAL VOTERS			MALES			FEMALES		
	VOTED	REGISTERED	TURNOUT	VOTED	REGISTERED	TURNOUT	VOTED	REGISTERED	TURNOUT
CITY									
Leg. Dist. 07	105	282	37.23%	47	139	33.81%	58	143	40.56%
Leg. Dist. 16	1	3	33.33%	0	1	0.00%	1	2	50.00%
Leg. Dist. 21	423	1,297	32.61%	225	655	34.35%	198	642	30.84%
Leg. Dist. 22	116	534	21.72%	66	275	24.00%	50	259	19.31%
Leg. Dist. 23	727	1,925	37.77%	413	1,087	37.99%	314	838	37.47%
Leg. Dist. 24	353	964	36.62%	190	498	38.15%	163	466	34.98%
Leg. Dist. 25	176	725	24.28%	104	386	26.94%	72	339	21.24%
Leg. Dist. 26	619	1,514	40.89%	318	743	42.80%	301	771	39.04%
Leg. Dist. 27	295	970	30.41%	158	495	31.92%	137	475	28.84%
Leg. Dist. 28	260	981	26.50%	145	515	28.16%	115	466	24.68%
Leg. Dist. 29	285	1,108	25.72%	138	567	24.34%	147	541	27.17%
CITY TOTAL:	3,360	10,303	32.61%	1,804	5,361	33.65%	1,556	4,942	31.49%
TOWNS									
Brighton	2,108	5,071	41.57%	1,104	2,542	43.43%	1,004	2,529	39.70%
Chili	2,511	6,525	38.48%	1,305	3,248	40.18%	1,206	3,277	36.80%
Clarkson	549	1,596	34.40%	295	828	35.63%	254	768	33.07%
East Rochester	413	1,058	39.04%	215	532	40.41%	198	526	37.64%
Gates	2,259	5,215	43.32%	1,138	2,515	45.25%	1,121	2,700	41.52%
Greece	7,331	20,527	35.71%	3,901	10,283	37.94%	3,430	10,244	33.48%
Hamlin	792	2,254	35.14%	446	1,168	38.18%	346	1,086	31.86%
Henrietta	3,650	6,885	53.01%	1,906	3,547	53.74%	1,744	3,338	52.25%
Irondequoit	3,887	9,030	43.05%	2,054	4,499	45.65%	1,833	4,531	40.45%
Mendon	924	2,590	35.68%	506	1,365	37.07%	418	1,225	34.12%
Ogden	1,757	4,937	35.59%	938	2,474	37.91%	819	2,463	33.25%
Parma	1,361	4,099	33.20%	728	2,128	34.21%	633	1,971	32.12%
Penfield	3,342	8,839	37.81%	1,803	4,504	40.03%	1,539	4,335	35.50%
Perinton	4,950	11,959	41.39%	2,642	6,109	43.25%	2,308	5,850	39.45%
Pittsford	3,011	6,981	43.13%	1,627	3,593	45.28%	1,384	3,388	40.85%
Riga	725	1,706	42.50%	364	857	42.47%	361	849	42.52%
Rush	525	1,003	52.34%	282	519	54.34%	243	484	50.21%
Sweden	1,035	2,224	46.54%	541	1,134	47.71%	494	1,090	45.32%
Webster	3,710	9,857	37.64%	1,977	5,000	39.54%	1,733	4,857	35.68%
Wheatland	450	1,139	39.51%	248	574	43.21%	202	565	35.75%
TOWNS TOTAL:	45,290	113,495	39.90%	24,020	57,419	41.83%	21,270	56,076	37.93%
GRAND TOTAL:	48,650	123,798	39.30%	25,824	62,780	41.13%	22,826	61,018	37.41%

2015 GENERAL ELECTION  
REPUBLICAN TURNOUT BY AGE

LT/LD SUMMARY  
Part 1 of 2

LEGISLATIVE DISTRICT OR TOWN	NDOB			18-24			25-34			35-44		
	VOTED	REGISTERED	TURNOUT	VOTED	REGISTERED	TURNOUT	VOTED	REGISTERED	TURNOUT	VOTED	REGISTERED	TURNOUT
CITY												
Leg. Dist. 07	1	9	11.11%	0	12	0.00%	3	28	10.71%	4	15	26.67%
Leg. Dist. 16	0	0	0.00%	0	0	0.00%	0	0	0.00%	0	0	0.00%
Leg. Dist. 21	15	47	31.91%	9	56	16.07%	35	185	18.92%	42	194	21.65%
Leg. Dist. 22	2	6	33.33%	3	41	7.32%	5	73	6.85%	4	64	6.25%
Leg. Dist. 23	20	34	58.82%	9	77	11.69%	75	430	17.44%	65	259	25.10%
Leg. Dist. 24	9	23	39.13%	5	33	15.15%	40	205	19.51%	29	110	26.36%
Leg. Dist. 25	3	24	12.50%	2	51	3.92%	13	139	9.35%	16	84	19.05%
Leg. Dist. 26	12	37	32.43%	7	41	17.07%	35	167	20.96%	60	195	30.77%
Leg. Dist. 27	5	18	27.78%	6	43	13.95%	20	143	13.99%	21	135	15.56%
Leg. Dist. 28	6	20	30.00%	3	36	8.33%	15	105	14.29%	17	118	14.41%
Leg. Dist. 29	8	33	24.24%	1	42	2.38%	11	111	9.91%	12	136	8.82%
CITY TOTAL:	81	251	32.27%	45	432	10.42%	252	1,586	15.89%	270	1,310	20.61%
TOWNS												
Brighton	51	119	42.86%	19	190	10.00%	91	553	16.46%	138	547	25.23%
Chili	46	114	40.35%	38	304	12.50%	120	735	16.33%	188	767	24.51%
Clarkson	2	5	40.00%	15	83	18.07%	21	161	13.04%	34	181	18.78%
East Rochester	13	28	46.43%	8	41	19.51%	20	115	17.39%	29	118	24.58%
Gates	18	50	36.00%	29	175	16.57%	95	531	17.89%	134	529	25.33%
Greece	125	406	30.79%	99	784	12.63%	305	2,091	14.59%	442	2,217	19.94%
Hamlin	6	13	46.15%	7	97	7.22%	21	230	9.13%	58	265	21.89%
Henrietta	18	29	62.07%	63	281	22.42%	177	743	23.82%	309	790	39.11%
Irondequoit	79	215	36.74%	45	274	16.42%	164	934	17.56%	282	986	28.60%
Mendon	1	12	8.33%	11	162	6.79%	32	214	14.95%	54	248	21.77%
Ogden	13	47	27.66%	36	242	14.88%	84	544	15.44%	144	642	22.43%
Parma	8	25	32.00%	17	196	8.67%	49	403	12.16%	90	461	19.52%
Penfield	41	118	34.75%	40	385	10.39%	119	827	14.39%	243	1,024	23.73%
Perinton	14	38	36.84%	58	647	8.96%	148	951	15.56%	348	1,246	27.93%
Pittsford	19	49	38.78%	44	345	12.75%	63	523	12.05%	208	731	28.45%
Riga	2	10	20.00%	15	86	17.44%	40	190	21.05%	59	187	31.55%
Rush	15	28	53.57%	11	54	20.37%	17	80	21.25%	38	97	39.18%
Sweden	5	10	50.00%	30	100	30.00%	37	242	15.29%	75	248	30.24%
Webster	50	119	42.02%	49	393	12.47%	126	905	13.92%	279	1,116	25.00%
Wheatland	5	6	83.33%	6	70	8.57%	21	133	15.79%	36	133	27.07%
TOWNS TOTAL:	531	1,441	36.85%	640	4,909	13.04%	1,750	11,105	15.76%	3,188	12,533	25.44%
GRAND TOTAL:	612	1,692	36.17%	685	5,341	12.83%	2,002	12,691	15.77%	3,458	13,843	24.98%

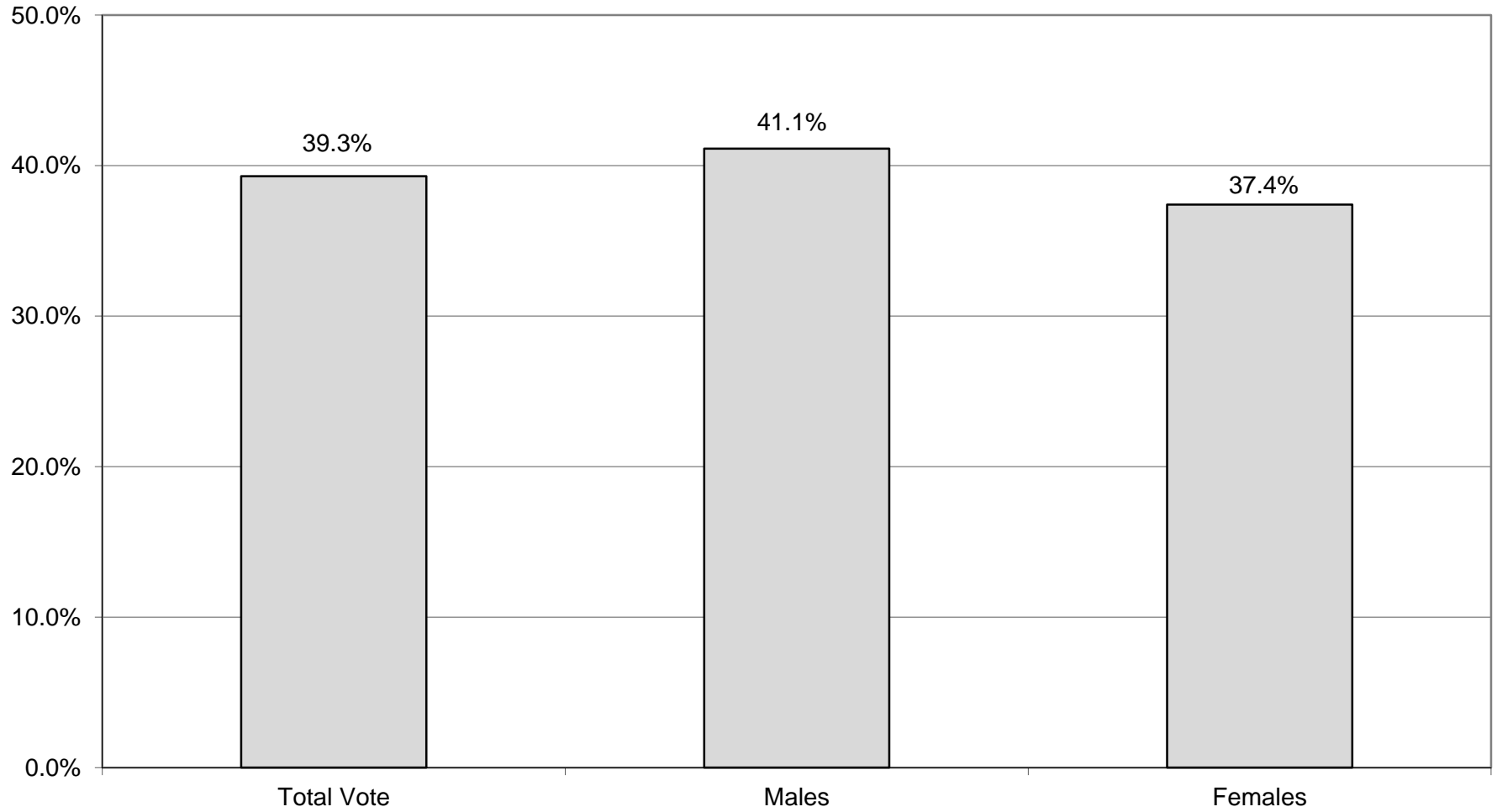
2015 GENERAL ELECTION  
REPUBLICAN TURNOUT BY AGE

LT/LD SUMMARY  
Part 2 of 2

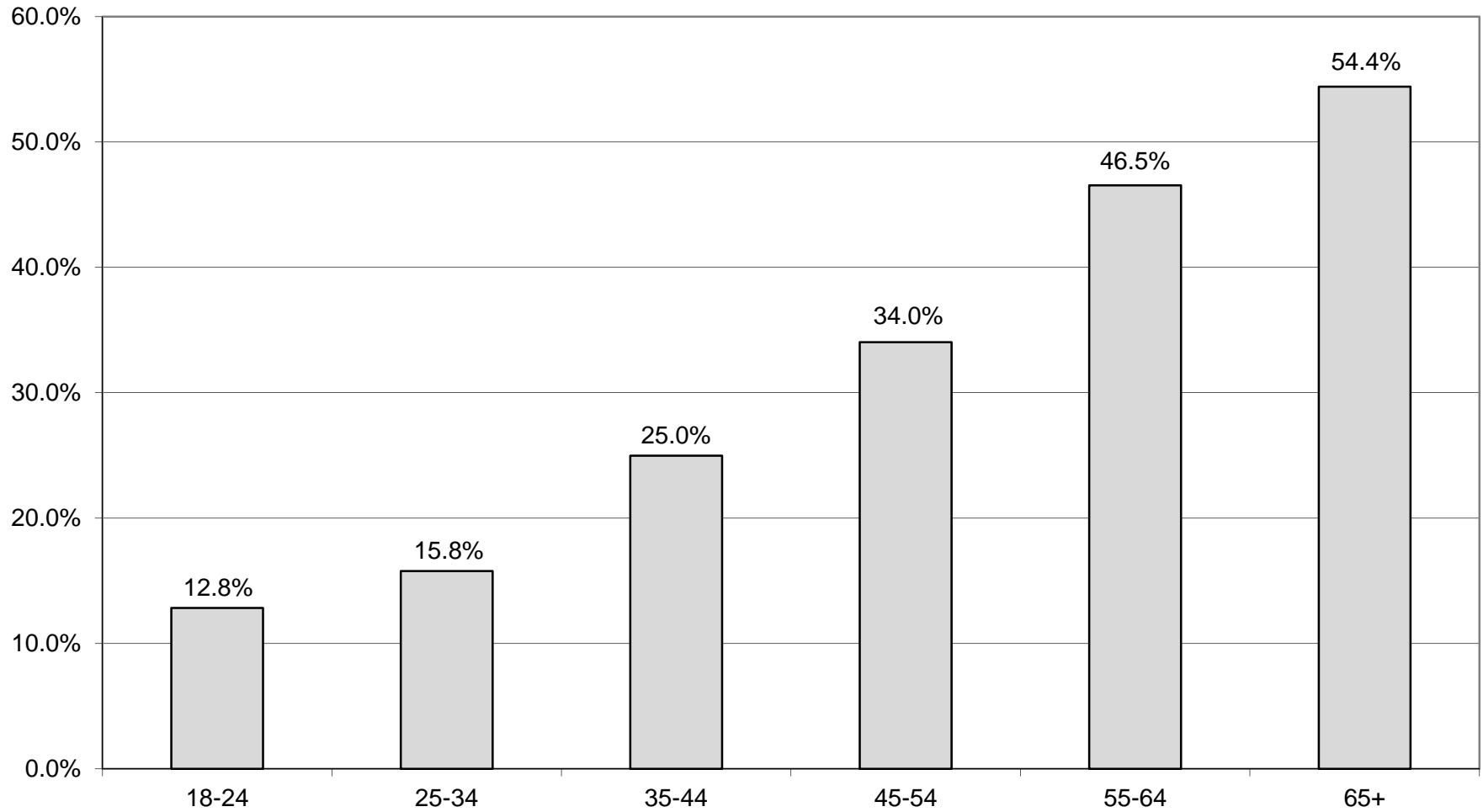
LEGISLATIVE DISTRICT OR TOWN	45-54			55-64			65+		
	VOTED	REGISTERED	TURNOUT	VOTED	REGISTERED	TURNOUT	VOTED	REGISTERED	TURNOUT
CITY									
Leg. Dist. 07	16	41	39.02%	31	74	41.89%	50	103	48.54%
Leg. Dist. 16	0	0	0.00%	1	3	33.33%	0	0	0.00%
Leg. Dist. 21	70	239	29.29%	90	245	36.73%	162	331	48.94%
Leg. Dist. 22	16	106	15.09%	40	114	35.09%	46	130	35.38%
Leg. Dist. 23	126	330	38.18%	173	349	49.57%	259	446	58.07%
Leg. Dist. 24	55	147	37.41%	87	185	47.03%	128	261	49.04%
Leg. Dist. 25	32	135	23.70%	43	119	36.13%	67	173	38.73%
Leg. Dist. 26	106	300	35.33%	155	325	47.69%	244	449	54.34%
Leg. Dist. 27	53	157	33.76%	82	231	35.50%	108	243	44.44%
Leg. Dist. 28	35	195	17.95%	80	236	33.90%	104	271	38.38%
Leg. Dist. 29	43	209	20.57%	83	242	34.30%	127	335	37.91%
CITY TOTAL:	552	1,859	29.69%	865	2,123	40.74%	1,295	2,742	47.23%
TOWNS									
Brighton	322	869	37.05%	450	891	50.51%	1,037	1,902	54.52%
Chili	444	1,369	32.43%	625	1,364	45.82%	1,050	1,872	56.09%
Clarkson	134	404	33.17%	138	338	40.83%	205	424	48.35%
East Rochester	85	217	39.17%	105	240	43.75%	153	299	51.17%
Gates	358	971	36.87%	570	1,081	52.73%	1,055	1,878	56.18%
Greece	1,110	3,805	29.17%	1,815	4,390	41.34%	3,435	6,834	50.26%
Hamlin	152	477	31.87%	221	554	39.89%	327	618	52.91%
Henrietta	682	1,386	49.21%	951	1,509	63.02%	1,450	2,147	67.54%
Irondequoit	710	1,710	41.52%	964	1,863	51.74%	1,643	3,048	53.90%
Mendon	209	668	31.29%	260	609	42.69%	357	677	52.73%
Ogden	333	1,109	30.03%	501	1,069	46.87%	646	1,284	50.31%
Parma	233	814	28.62%	364	945	38.52%	600	1,255	47.81%
Penfield	635	1,949	32.58%	835	1,870	44.65%	1,429	2,666	53.60%
Perinton	887	2,631	33.71%	1,181	2,527	46.74%	2,314	3,919	59.05%
Pittsford	566	1,501	37.71%	711	1,477	48.14%	1,400	2,355	59.45%
Riga	138	365	37.81%	184	384	47.92%	287	484	59.30%
Rush	94	191	49.21%	153	262	58.40%	197	291	67.70%
Sweden	197	426	46.24%	278	516	53.88%	413	682	60.56%
Webster	664	2,266	29.30%	917	1,993	46.01%	1,625	3,065	53.02%
Wheatland	68	208	32.69%	129	247	52.23%	185	342	54.09%
TOWNS TOTAL:	8,021	23,336	34.37%	11,352	24,129	47.05%	19,808	36,042	54.96%
GRAND TOTAL:	8,573	25,195	34.03%	12,217	26,252	46.54%	21,103	38,784	54.41%



# REPUBLICAN TURNOUT - TOTAL AND GENDER 2015 GENERAL ELECTION



## REPUBLICAN TURNOUT BY AGE GROUP 2015 GENERAL ELECTION



# **CONSERVATIVE SUMMARY**

2015 GENERAL ELECTION  
CONSERVATIVE TURNOUT BY GENDER

LT/LD SUMMARY

LEGISLATIVE DISTRICT OR TOWN	TOTAL VOTERS			MALES			FEMALES		
	VOTED	REGISTERED	TURNOUT	VOTED	REGISTERED	TURNOUT	VOTED	REGISTERED	TURNOUT
CITY									
Leg. Dist. 07	14	24	58.33%	9	15	60.00%	5	9	55.56%
Leg. Dist. 16	0	0	0.00%	0	0	0.00%	0	0	0.00%
Leg. Dist. 21	31	84	36.90%	24	52	46.15%	7	32	21.88%
Leg. Dist. 22	10	49	20.41%	7	25	28.00%	3	24	12.50%
Leg. Dist. 23	39	112	34.82%	20	63	31.75%	19	49	38.78%
Leg. Dist. 24	19	56	33.93%	11	28	39.29%	8	28	28.57%
Leg. Dist. 25	19	47	40.43%	9	25	36.00%	10	22	45.45%
Leg. Dist. 26	71	169	42.01%	37	91	40.66%	34	78	43.59%
Leg. Dist. 27	29	91	31.87%	16	57	28.07%	13	34	38.24%
Leg. Dist. 28	30	87	34.48%	18	48	37.50%	12	39	30.77%
Leg. Dist. 29	28	120	23.33%	19	67	28.36%	9	53	16.98%
CITY TOTAL:	290	839	34.56%	170	471	36.09%	120	368	32.61%
TOWNS									
Brighton	89	215	41.40%	59	121	48.76%	30	94	31.91%
Chili	176	482	36.51%	105	278	37.77%	71	204	34.80%
Clarkson	41	122	33.61%	28	76	36.84%	13	46	28.26%
East Rochester	26	72	36.11%	14	45	31.11%	12	27	44.44%
Gates	176	397	44.33%	101	216	46.76%	75	181	41.44%
Greece	555	1,586	34.99%	319	824	38.71%	236	762	30.97%
Hamlin	38	144	26.39%	25	96	26.04%	13	48	27.08%
Henrietta	235	471	49.89%	130	263	49.43%	105	208	50.48%
Irondequoit	274	675	40.59%	174	388	44.85%	100	287	34.84%
Mendon	38	110	34.55%	26	69	37.68%	12	41	29.27%
Ogden	153	389	39.33%	97	209	46.41%	56	180	31.11%
Parma	97	273	35.53%	60	156	38.46%	37	117	31.62%
Penfield	158	436	36.24%	92	245	37.55%	66	191	34.55%
Perinton	183	493	37.12%	125	305	40.98%	58	188	30.85%
Pittsford	89	213	41.78%	59	130	45.38%	30	83	36.14%
Riga	44	102	43.14%	26	55	47.27%	18	47	38.30%
Rush	29	53	54.72%	17	30	56.67%	12	23	52.17%
Sweden	66	142	46.48%	40	81	49.38%	26	61	42.62%
Webster	223	643	34.68%	140	375	37.33%	83	268	30.97%
Wheatland	39	94	41.49%	24	55	43.64%	15	39	38.46%
TOWNS TOTAL:	2,729	7,112	38.37%	1,661	4,017	41.35%	1,068	3,095	34.51%
GRAND TOTAL:	3,019	7,951	37.97%	1,831	4,488	40.80%	1,188	3,463	34.31%

2015 GENERAL ELECTION  
CONSERVATIVE TURNOUT BY AGE

LT/LD SUMMARY  
Part 1 of 2

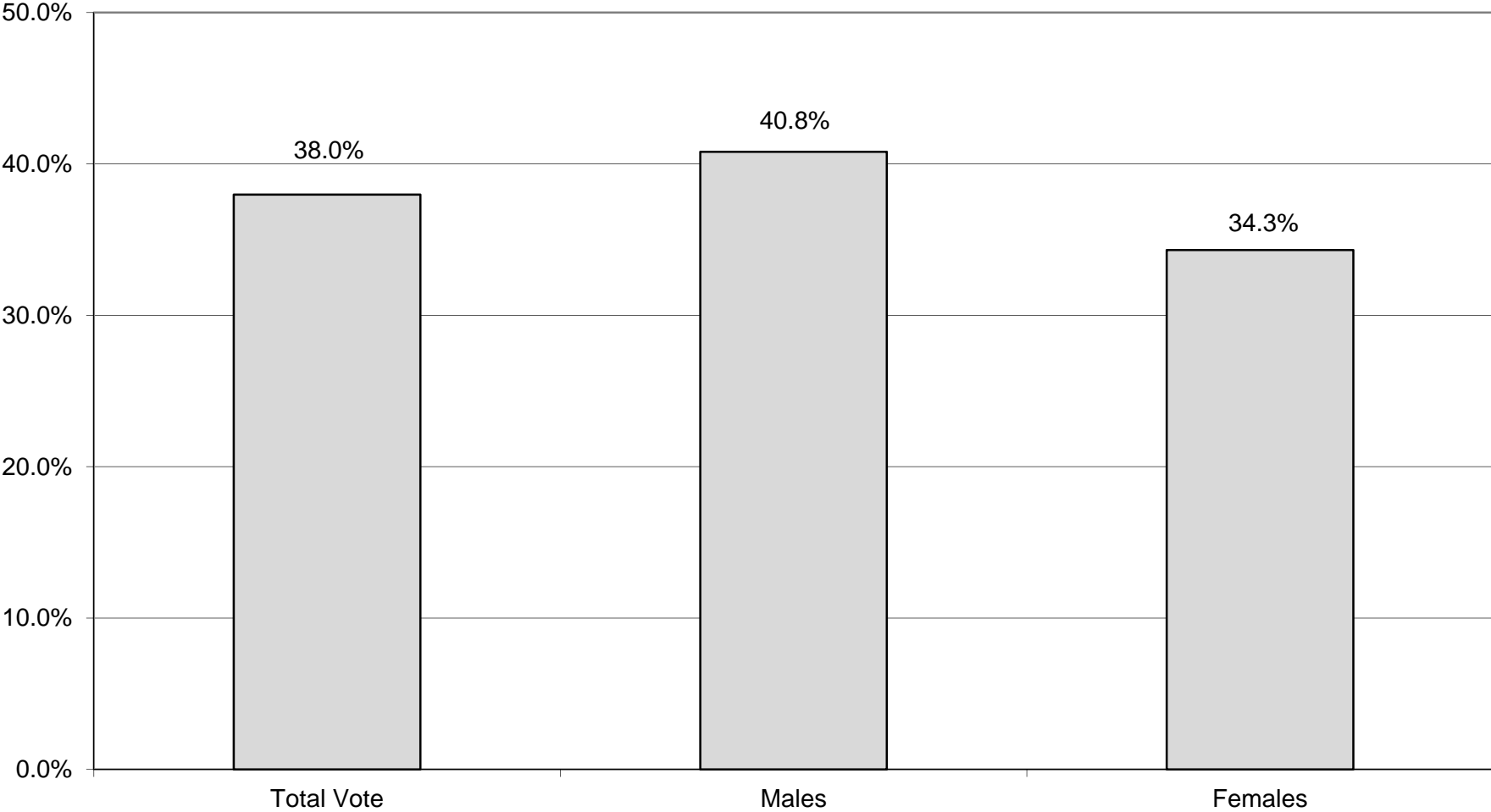
LEGISLATIVE DISTRICT OR TOWN CITY	NDOB			18-24			25-34			35-44		
	VOTED	REGISTERED	TURNOUT	VOTED	REGISTERED	TURNOUT	VOTED	REGISTERED	TURNOUT	VOTED	REGISTERED	TURNOUT
Leg. Dist. 07	0	0	0.00%	0	0	0.00%	1	3	33.33%	1	1	100.00%
Leg. Dist. 16	0	0	0.00%	0	0	0.00%	0	0	0.00%	0	0	0.00%
Leg. Dist. 21	1	1	100.00%	0	2	0.00%	2	9	22.22%	3	11	27.27%
Leg. Dist. 22	0	0	0.00%	0	3	0.00%	1	6	16.67%	0	5	0.00%
Leg. Dist. 23	0	0	0.00%	1	4	25.00%	0	22	0.00%	3	13	23.08%
Leg. Dist. 24	1	1	100.00%	0	3	0.00%	3	6	50.00%	1	9	11.11%
Leg. Dist. 25	0	0	0.00%	0	0	0.00%	3	7	42.86%	3	7	42.86%
Leg. Dist. 26	0	0	0.00%	2	10	20.00%	3	17	17.65%	8	17	47.06%
Leg. Dist. 27	0	0	0.00%	1	6	16.67%	1	11	9.09%	3	8	37.50%
Leg. Dist. 28	0	0	0.00%	0	5	0.00%	2	7	28.57%	1	7	14.29%
Leg. Dist. 29	0	0	0.00%	0	6	0.00%	2	13	15.38%	2	19	10.53%
CITY TOTAL:	2	2	100.00%	4	39	10.26%	18	101	17.82%	25	97	25.77%
TOWNS												
Brighton	0	0	0.00%	2	12	16.67%	4	25	16.00%	11	31	35.48%
Chili	1	2	50.00%	2	24	8.33%	9	58	15.52%	10	65	15.38%
Clarkson	0	0	0.00%	1	6	16.67%	4	16	25.00%	6	16	37.50%
East Rochester	0	0	0.00%	0	1	0.00%	0	5	0.00%	1	7	14.29%
Gates	0	0	0.00%	2	14	14.29%	7	33	21.21%	9	37	24.32%
Greece	6	7	85.71%	9	67	13.43%	22	153	14.38%	27	172	15.70%
Hamlin	0	0	0.00%	1	9	11.11%	3	12	25.00%	2	13	15.38%
Henrietta	0	0	0.00%	5	17	29.41%	14	52	26.92%	18	48	37.50%
Irondequoit	2	5	40.00%	3	28	10.71%	9	62	14.52%	27	79	34.18%
Mendon	0	0	0.00%	1	15	6.67%	1	8	12.50%	5	11	45.45%
Ogden	0	0	0.00%	6	26	23.08%	11	44	25.00%	11	41	26.83%
Parma	0	0	0.00%	2	16	12.50%	4	26	15.38%	10	38	26.32%
Penfield	0	1	0.00%	3	26	11.54%	7	30	23.33%	10	42	23.81%
Perinton	0	1	0.00%	6	22	27.27%	1	32	3.13%	9	49	18.37%
Pittsford	0	1	0.00%	4	10	40.00%	3	13	23.08%	1	23	4.35%
Riga	0	0	0.00%	2	9	22.22%	6	12	50.00%	3	9	33.33%
Rush	0	0	0.00%	0	2	0.00%	2	3	66.67%	2	5	40.00%
Sweden	0	0	0.00%	2	14	14.29%	4	13	30.77%	8	14	57.14%
Webster	3	3	100.00%	5	46	10.87%	11	59	18.64%	14	65	21.54%
Wheatland	0	0	0.00%	2	6	33.33%	1	4	25.00%	2	11	18.18%
TOWNS TOTAL:	12	20	60.00%	58	370	15.68%	123	660	18.64%	186	776	23.97%
GRAND TOTAL:	14	22	63.64%	62	409	15.16%	141	761	18.53%	211	873	24.17%

2015 GENERAL ELECTION  
CONSERVATIVE TURNOUT BY AGE

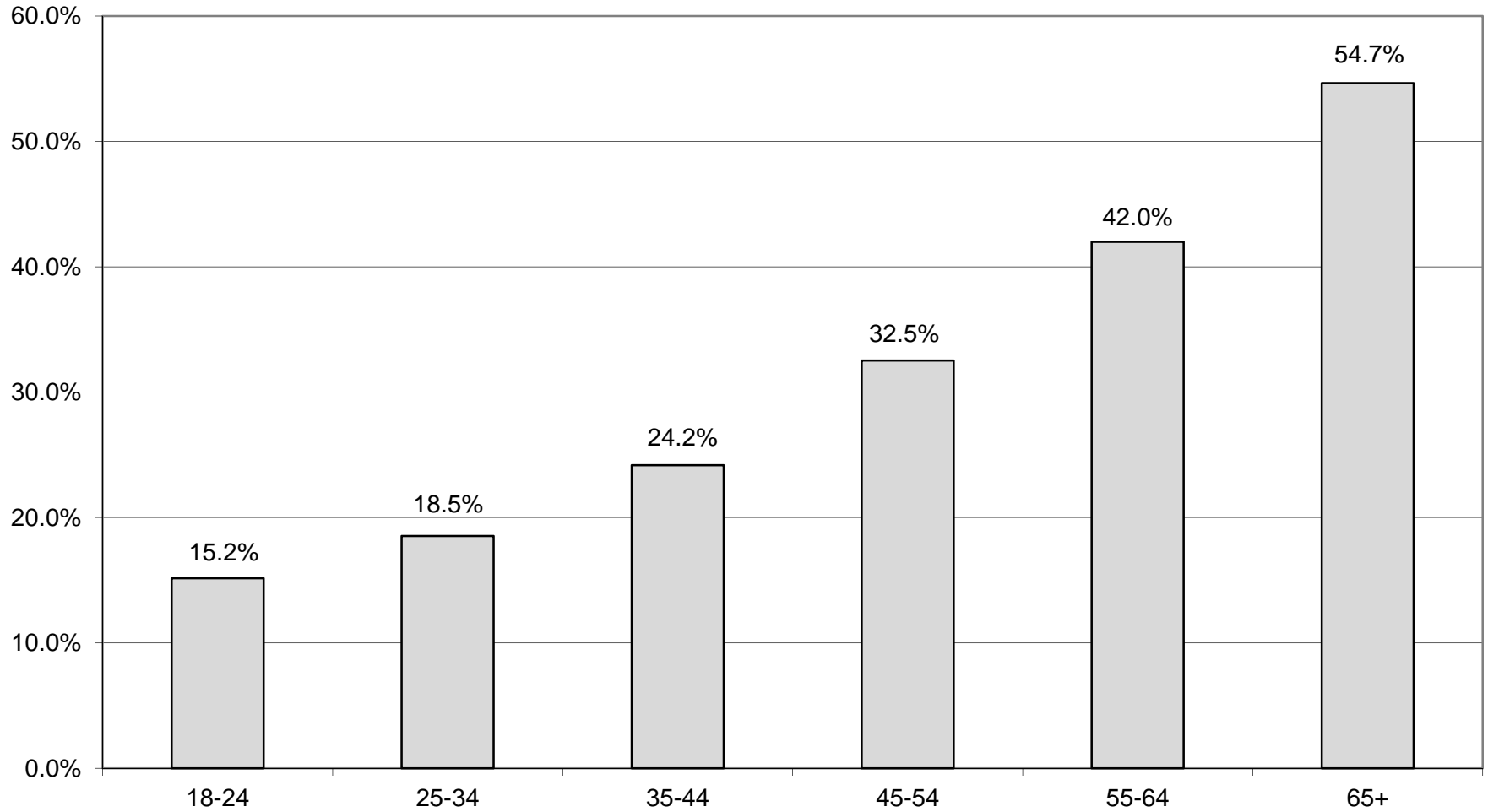
LT/LD SUMMARY  
Part 2 of 2

LEGISLATIVE DISTRICT OR TOWN	45-54			55-64			65+		
	VOTED	REGISTERED	TURNOUT	VOTED	REGISTERED	TURNOUT	VOTED	REGISTERED	TURNOUT
CITY									
Leg. Dist. 07	3	3	100.00%	5	9	55.56%	4	8	50.00%
Leg. Dist. 16	0	0	0.00%	0	0	0.00%	0	0	0.00%
Leg. Dist. 21	5	18	27.78%	8	25	32.00%	12	18	66.67%
Leg. Dist. 22	1	11	9.09%	4	13	30.77%	4	11	36.36%
Leg. Dist. 23	8	22	36.36%	13	30	43.33%	14	21	66.67%
Leg. Dist. 24	2	7	28.57%	6	16	37.50%	6	14	42.86%
Leg. Dist. 25	4	10	40.00%	4	13	30.77%	5	10	50.00%
Leg. Dist. 26	10	30	33.33%	19	49	38.78%	29	46	63.04%
Leg. Dist. 27	6	20	30.00%	7	16	43.75%	11	30	36.67%
Leg. Dist. 28	4	17	23.53%	15	33	45.45%	8	18	44.44%
Leg. Dist. 29	4	24	16.67%	9	22	40.91%	11	36	30.56%
CITY TOTAL:	47	162	29.01%	90	226	39.82%	104	212	49.06%
TOWNS									
Brighton	18	39	46.15%	16	45	35.56%	38	63	60.32%
Chili	36	101	35.64%	42	102	41.18%	76	130	58.46%
Clarkson	10	36	27.78%	14	29	48.28%	6	19	31.58%
East Rochester	7	20	35.00%	12	27	44.44%	6	12	50.00%
Gates	33	97	34.02%	49	99	49.49%	76	117	64.96%
Greece	99	307	32.25%	181	453	39.96%	211	427	49.41%
Hamlin	5	31	16.13%	17	56	30.36%	10	23	43.48%
Henrietta	44	95	46.32%	65	121	53.72%	89	138	64.49%
Irondequoit	39	124	31.45%	80	174	45.98%	114	203	56.16%
Mendon	4	21	19.05%	13	28	46.43%	14	27	51.85%
Ogden	34	93	36.56%	41	102	40.20%	50	83	60.24%
Parma	17	51	33.33%	27	79	34.18%	37	63	58.73%
Penfield	31	100	31.00%	43	101	42.57%	64	136	47.06%
Perinton	28	90	31.11%	45	114	39.47%	94	185	50.81%
Pittsford	16	54	29.63%	22	38	57.89%	43	74	58.11%
Riga	7	29	24.14%	12	23	52.17%	14	20	70.00%
Rush	4	12	33.33%	9	16	56.25%	12	15	80.00%
Sweden	13	37	35.14%	25	42	59.52%	14	22	63.64%
Webster	38	128	29.69%	51	161	31.68%	101	181	55.80%
Wheatland	5	18	27.78%	14	31	45.16%	15	24	62.50%
TOWNS TOTAL:	488	1,483	32.91%	778	1,841	42.26%	1,084	1,962	55.25%
GRAND TOTAL:	535	1,645	32.52%	868	2,067	41.99%	1,188	2,174	54.65%

# CONSERVATIVE TURNOUT - TOTAL AND GENDER 2015 GENERAL ELECTION



## CONSERVATIVE TURNOUT BY AGE GROUP 2015 GENERAL ELECTION





# **GREEN SUMMARY**

2015 GENERAL ELECTION  
GREEN TURNOUT BY GENDER

LT/LD SUMMARY

LEGISLATIVE DISTRICT OR TOWN	TOTAL VOTERS			MALES			FEMALES		
	VOTED	REGISTERED	TURNOUT	VOTED	REGISTERED	TURNOUT	VOTED	REGISTERED	TURNOUT
CITY									
Leg. Dist. 07	3	5	60.00%	2	3	66.67%	1	2	50.00%
Leg. Dist. 16	0	0	0.00%	0	0	0.00%	0	0	0.00%
Leg. Dist. 21	23	59	38.98%	13	30	43.33%	10	29	34.48%
Leg. Dist. 22	3	13	23.08%	2	9	22.22%	1	4	25.00%
Leg. Dist. 23	28	101	27.72%	21	59	35.59%	7	42	16.67%
Leg. Dist. 24	34	79	43.04%	22	50	44.00%	12	29	41.38%
Leg. Dist. 25	20	46	43.48%	15	30	50.00%	5	16	31.25%
Leg. Dist. 26	6	19	31.58%	1	9	11.11%	5	10	50.00%
Leg. Dist. 27	11	34	32.35%	7	19	36.84%	4	15	26.67%
Leg. Dist. 28	4	24	16.67%	2	13	15.38%	2	11	18.18%
Leg. Dist. 29	3	21	14.29%	2	15	13.33%	1	6	16.67%
CITY TOTAL:	135	401	33.67%	87	237	36.71%	48	164	29.27%
TOWNS									
Brighton	34	94	36.17%	25	56	44.64%	9	38	23.68%
Chili	11	40	27.50%	8	21	38.10%	3	19	15.79%
Clarkson	0	2	0.00%	0	1	0.00%	0	1	0.00%
East Rochester	3	15	20.00%	2	8	25.00%	1	7	14.29%
Gates	9	29	31.03%	6	16	37.50%	3	13	23.08%
Greece	27	112	24.11%	16	80	20.00%	11	32	34.38%
Hamlin	3	17	17.65%	2	10	20.00%	1	7	14.29%
Henrietta	15	41	36.59%	10	23	43.48%	5	18	27.78%
Irondequoit	29	121	23.97%	24	77	31.17%	5	44	11.36%
Mendon	7	27	25.93%	4	16	25.00%	3	11	27.27%
Ogden	1	25	4.00%	0	15	0.00%	1	10	10.00%
Parma	2	15	13.33%	1	9	11.11%	1	6	16.67%
Penfield	11	50	22.00%	7	33	21.21%	4	17	23.53%
Perinton	15	91	16.48%	10	48	20.83%	5	43	11.63%
Pittsford	9	42	21.43%	6	29	20.69%	3	13	23.08%
Riga	1	7	14.29%	0	2	0.00%	1	5	20.00%
Rush	3	6	50.00%	2	3	66.67%	1	3	33.33%
Sweden	10	19	52.63%	6	9	66.67%	4	10	40.00%
Webster	9	49	18.37%	4	27	14.81%	5	22	22.73%
Wheatland	2	7	28.57%	0	4	0.00%	2	3	66.67%
TOWNS TOTAL:	201	809	24.85%	133	487	27.31%	68	322	21.12%
GRAND TOTAL:	336	1,210	27.77%	220	724	30.39%	116	486	23.87%

2015 GENERAL ELECTION  
GREEN TURNOUT BY AGE

LT/LD SUMMARY  
Part 1 of 2

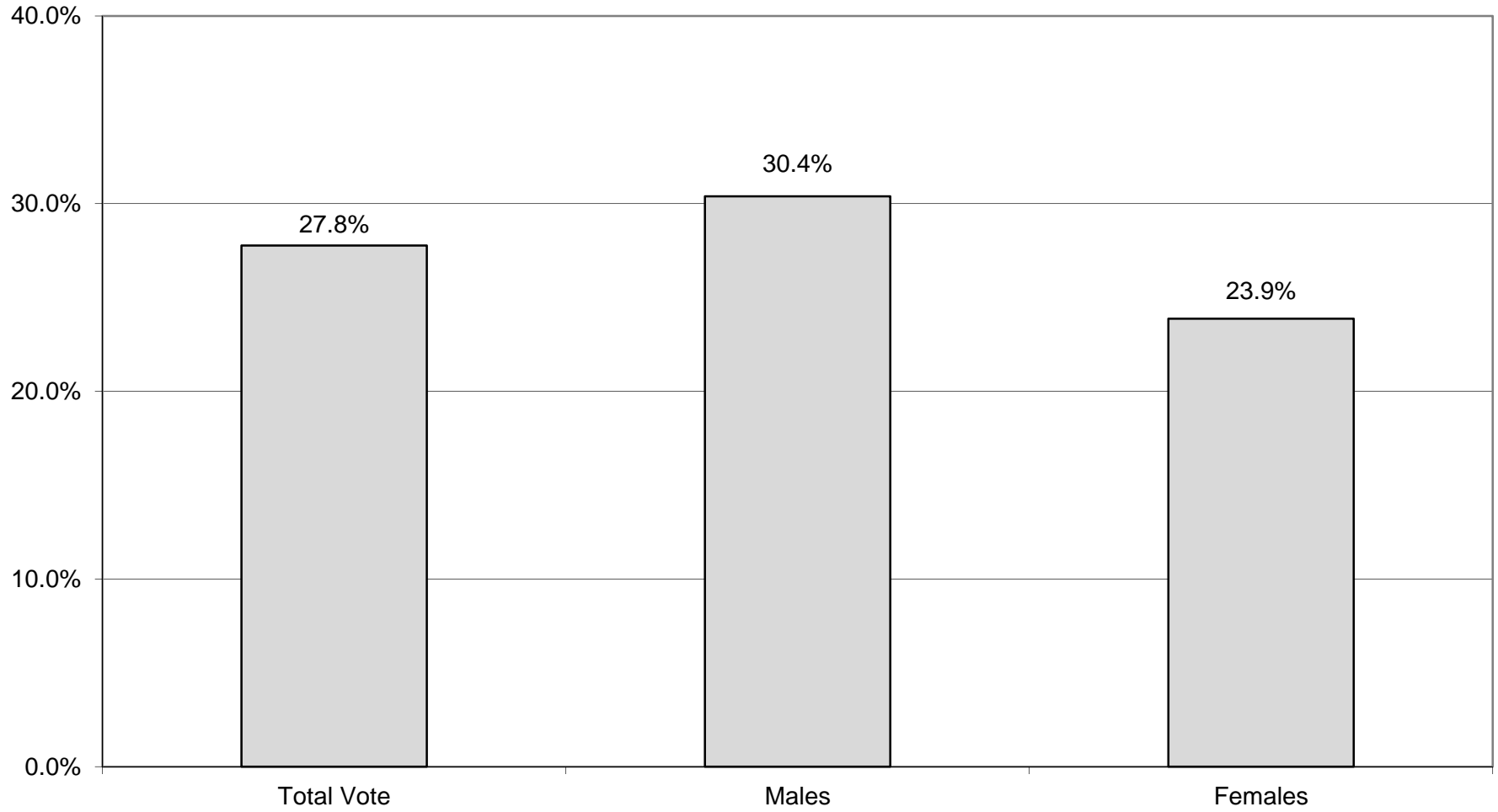
LEGISLATIVE DISTRICT OR TOWN	NDOB			18-24			25-34			35-44		
	VOTED	REGISTERED	TURNOUT	VOTED	REGISTERED	TURNOUT	VOTED	REGISTERED	TURNOUT	VOTED	REGISTERED	TURNOUT
CITY												
Leg. Dist. 07	0	0	0.00%	0	0	0.00%	0	1	0.00%	1	1	100.00%
Leg. Dist. 16	0	0	0.00%	0	0	0.00%	0	0	0.00%	0	0	0.00%
Leg. Dist. 21	0	0	0.00%	0	5	0.00%	11	27	40.74%	4	11	36.36%
Leg. Dist. 22	0	0	0.00%	0	3	0.00%	1	6	16.67%	0	1	0.00%
Leg. Dist. 23	0	0	0.00%	0	7	0.00%	10	40	25.00%	9	30	30.00%
Leg. Dist. 24	0	0	0.00%	0	3	0.00%	4	25	16.00%	8	21	38.10%
Leg. Dist. 25	0	0	0.00%	0	5	0.00%	8	18	44.44%	4	11	36.36%
Leg. Dist. 26	0	0	0.00%	0	1	0.00%	2	9	22.22%	1	3	33.33%
Leg. Dist. 27	0	0	0.00%	2	8	25.00%	2	13	15.38%	4	6	66.67%
Leg. Dist. 28	0	0	0.00%	0	4	0.00%	0	9	0.00%	0	4	0.00%
Leg. Dist. 29	0	0	0.00%	0	3	0.00%	0	4	0.00%	1	6	16.67%
CITY TOTAL:	0	0	0.00%	2	39	5.13%	38	152	25.00%	32	94	34.04%
TOWNS												
Brighton	0	0	0.00%	2	7	28.57%	4	20	20.00%	4	23	17.39%
Chili	0	0	0.00%	0	6	0.00%	1	10	10.00%	6	9	66.67%
Clarkson	0	0	0.00%	0	1	0.00%	0	0	0.00%	0	0	0.00%
East Rochester	0	0	0.00%	1	3	33.33%	0	5	0.00%	0	4	0.00%
Gates	0	0	0.00%	1	3	33.33%	1	10	10.00%	1	3	33.33%
Greece	0	0	0.00%	0	14	0.00%	6	44	13.64%	10	26	38.46%
Hamlin	0	0	0.00%	1	2	50.00%	1	10	10.00%	0	3	0.00%
Henrietta	0	0	0.00%	2	7	28.57%	4	15	26.67%	4	10	40.00%
Irondequoit	0	0	0.00%	3	18	16.67%	5	40	12.50%	2	34	5.88%
Mendon	0	0	0.00%	0	10	0.00%	1	9	11.11%	3	3	100.00%
Ogden	0	0	0.00%	0	3	0.00%	1	8	12.50%	0	8	0.00%
Parma	0	0	0.00%	0	5	0.00%	0	4	0.00%	2	6	33.33%
Penfield	0	0	0.00%	1	13	7.69%	3	15	20.00%	4	15	26.67%
Perinton	0	0	0.00%	2	28	7.14%	3	33	9.09%	2	15	13.33%
Pittsford	0	0	0.00%	0	7	0.00%	1	12	8.33%	2	8	25.00%
Riga	0	0	0.00%	0	0	0.00%	0	2	0.00%	0	3	0.00%
Rush	0	0	0.00%	0	1	0.00%	0	1	0.00%	0	1	0.00%
Sweden	0	0	0.00%	0	2	0.00%	0	2	0.00%	5	8	62.50%
Webster	0	0	0.00%	0	7	0.00%	3	20	15.00%	1	10	10.00%
Wheatland	0	0	0.00%	0	1	0.00%	1	4	25.00%	1	2	50.00%
TOWNS TOTAL:	0	0	0.00%	13	138	9.42%	35	264	13.26%	47	191	24.61%
GRAND TOTAL:	0	0	0.00%	15	177	8.47%	73	416	17.55%	79	285	27.72%

2015 GENERAL ELECTION  
GREEN TURNOUT BY AGE

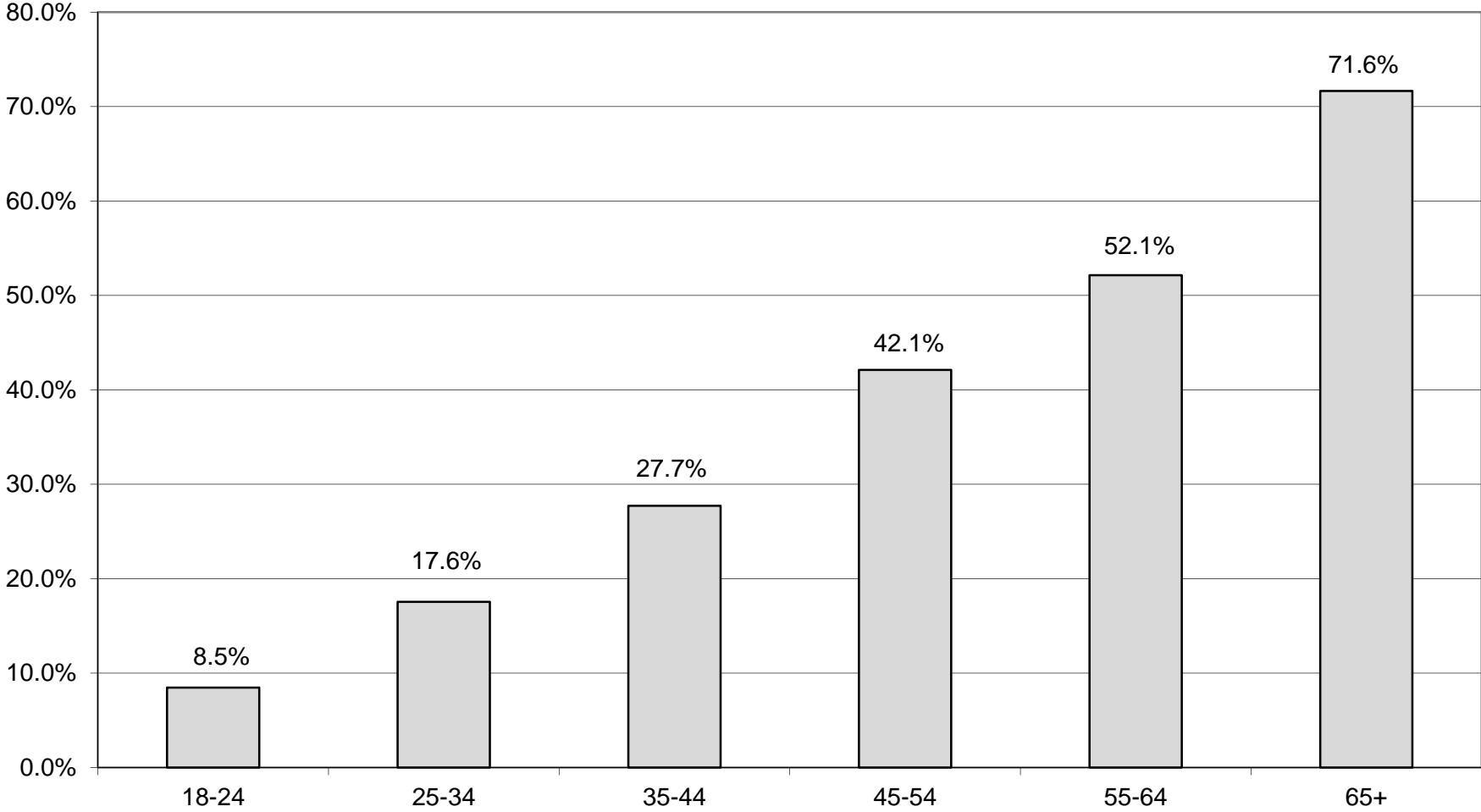
LT/LD SUMMARY  
Part 2 of 2

LEGISLATIVE DISTRICT OR TOWN	45-54			55-64			65+		
	VOTED	REGISTERED	TURNOUT	VOTED	REGISTERED	TURNOUT	VOTED	REGISTERED	TURNOUT
CITY									
Leg. Dist. 07	0	1	0.00%	1	1	100.00%	1	1	100.00%
Leg. Dist. 16	0	0	0.00%	0	0	0.00%	0	0	0.00%
Leg. Dist. 21	3	6	50.00%	4	5	80.00%	1	5	20.00%
Leg. Dist. 22	1	2	50.00%	1	1	100.00%	0	0	0.00%
Leg. Dist. 23	5	15	33.33%	3	8	37.50%	1	1	100.00%
Leg. Dist. 24	12	18	66.67%	5	6	83.33%	5	6	83.33%
Leg. Dist. 25	1	2	50.00%	3	5	60.00%	4	5	80.00%
Leg. Dist. 26	2	4	50.00%	1	1	100.00%	0	1	0.00%
Leg. Dist. 27	0	3	0.00%	3	4	75.00%	0	0	0.00%
Leg. Dist. 28	1	2	50.00%	2	4	50.00%	1	1	100.00%
Leg. Dist. 29	0	3	0.00%	0	2	0.00%	2	3	66.67%
CITY TOTAL:	25	56	44.64%	23	37	62.16%	15	23	65.22%
TOWNS									
Brighton	14	28	50.00%	4	8	50.00%	6	8	75.00%
Chili	2	8	25.00%	1	5	20.00%	1	2	50.00%
Clarkson	0	0	0.00%	0	0	0.00%	0	1	0.00%
East Rochester	1	2	50.00%	1	1	100.00%	0	0	0.00%
Gates	4	10	40.00%	0	1	0.00%	2	2	100.00%
Greece	3	12	25.00%	3	9	33.33%	5	7	71.43%
Hamlin	0	0	0.00%	0	1	0.00%	1	1	100.00%
Henrietta	2	4	50.00%	1	3	33.33%	2	2	100.00%
Irondequoit	11	17	64.71%	7	9	77.78%	1	3	33.33%
Mendon	2	4	50.00%	0	0	0.00%	1	1	100.00%
Ogden	0	5	0.00%	0	1	0.00%	0	0	0.00%
Parma	0	0	0.00%	0	0	0.00%	0	0	0.00%
Penfield	0	3	0.00%	1	2	50.00%	2	2	100.00%
Perinton	3	6	50.00%	1	5	20.00%	4	4	100.00%
Pittsford	2	9	22.22%	1	3	33.33%	3	3	100.00%
Riga	0	0	0.00%	1	2	50.00%	0	0	0.00%
Rush	0	0	0.00%	1	1	100.00%	2	2	100.00%
Sweden	2	3	66.67%	2	3	66.67%	1	1	100.00%
Webster	1	4	25.00%	2	3	66.67%	2	5	40.00%
Wheatland	0	0	0.00%	0	0	0.00%	0	0	0.00%
TOWNS TOTAL:	47	115	40.87%	26	57	45.61%	33	44	75.00%
GRAND TOTAL:	72	171	42.11%	49	94	52.13%	48	67	71.64%

# GREEN TURNOUT - TOTAL AND GENDER 2015 GENERAL ELECTION



# GREEN TURNOUT BY AGE GROUP 2015 GENERAL ELECTION



# **WORKING FAMILIES SUMMARY**

2015 GENERAL ELECTION  
WORKING FAMILIES TURNOUT BY GENDER

LT/LD SUMMARY

LEGISLATIVE DISTRICT OR TOWN	TOTAL VOTERS			MALES			FEMALES		
	VOTED	REGISTERED	TURNOUT	VOTED	REGISTERED	TURNOUT	VOTED	REGISTERED	TURNOUT
CITY									
Leg. Dist. 07	1	6	16.67%	0	2	0.00%	1	4	25.00%
Leg. Dist. 16	0	0	0.00%	0	0	0.00%	0	0	0.00%
Leg. Dist. 21	10	75	13.33%	6	28	21.43%	4	47	8.51%
Leg. Dist. 22	8	81	9.88%	4	32	12.50%	4	49	8.16%
Leg. Dist. 23	13	39	33.33%	7	21	33.33%	6	18	33.33%
Leg. Dist. 24	8	25	32.00%	4	15	26.67%	4	10	40.00%
Leg. Dist. 25	7	60	11.67%	4	22	18.18%	3	38	7.89%
Leg. Dist. 26	9	54	16.67%	5	27	18.52%	4	27	14.81%
Leg. Dist. 27	5	68	7.35%	1	21	4.76%	4	47	8.51%
Leg. Dist. 28	4	78	5.13%	2	32	6.25%	2	46	4.35%
Leg. Dist. 29	4	78	5.13%	3	31	9.68%	1	47	2.13%
CITY TOTAL:	69	564	12.23%	36	231	15.58%	33	333	9.91%
TOWNS									
Brighton	10	38	26.32%	5	18	27.78%	5	20	25.00%
Chili	11	51	21.57%	7	24	29.17%	4	27	14.81%
Clarkson	0	14	0.00%	0	7	0.00%	0	7	0.00%
East Rochester	1	16	6.25%	1	6	16.67%	0	10	0.00%
Gates	10	71	14.08%	5	28	17.86%	5	43	11.63%
Greece	28	215	13.02%	14	86	16.28%	14	129	10.85%
Hamlin	2	20	10.00%	2	11	18.18%	0	9	0.00%
Henrietta	15	55	27.27%	9	27	33.33%	6	28	21.43%
Irondequoit	16	82	19.51%	5	44	11.36%	11	38	28.95%
Mendon	2	9	22.22%	1	4	25.00%	1	5	20.00%
Ogden	6	44	13.64%	2	23	8.70%	4	21	19.05%
Parma	10	49	20.41%	6	30	20.00%	4	19	21.05%
Penfield	4	44	9.09%	2	18	11.11%	2	26	7.69%
Perinton	8	46	17.39%	6	21	28.57%	2	25	8.00%
Pittsford	6	15	40.00%	4	9	44.44%	2	6	33.33%
Riga	0	13	0.00%	0	4	0.00%	0	9	0.00%
Rush	4	12	33.33%	3	9	33.33%	1	3	33.33%
Sweden	4	24	16.67%	1	11	9.09%	3	13	23.08%
Webster	7	59	11.86%	3	32	9.38%	4	27	14.81%
Wheatland	0	9	0.00%	0	5	0.00%	0	4	0.00%
TOWNS TOTAL:	144	886	16.25%	76	417	18.23%	68	469	14.50%
GRAND TOTAL:	213	1,450	14.69%	112	648	17.28%	101	802	12.59%



2015 GENERAL ELECTION  
WORKING FAMILIES TURNOUT BY AGE

LT/LD SUMMARY  
Part 1 of 2

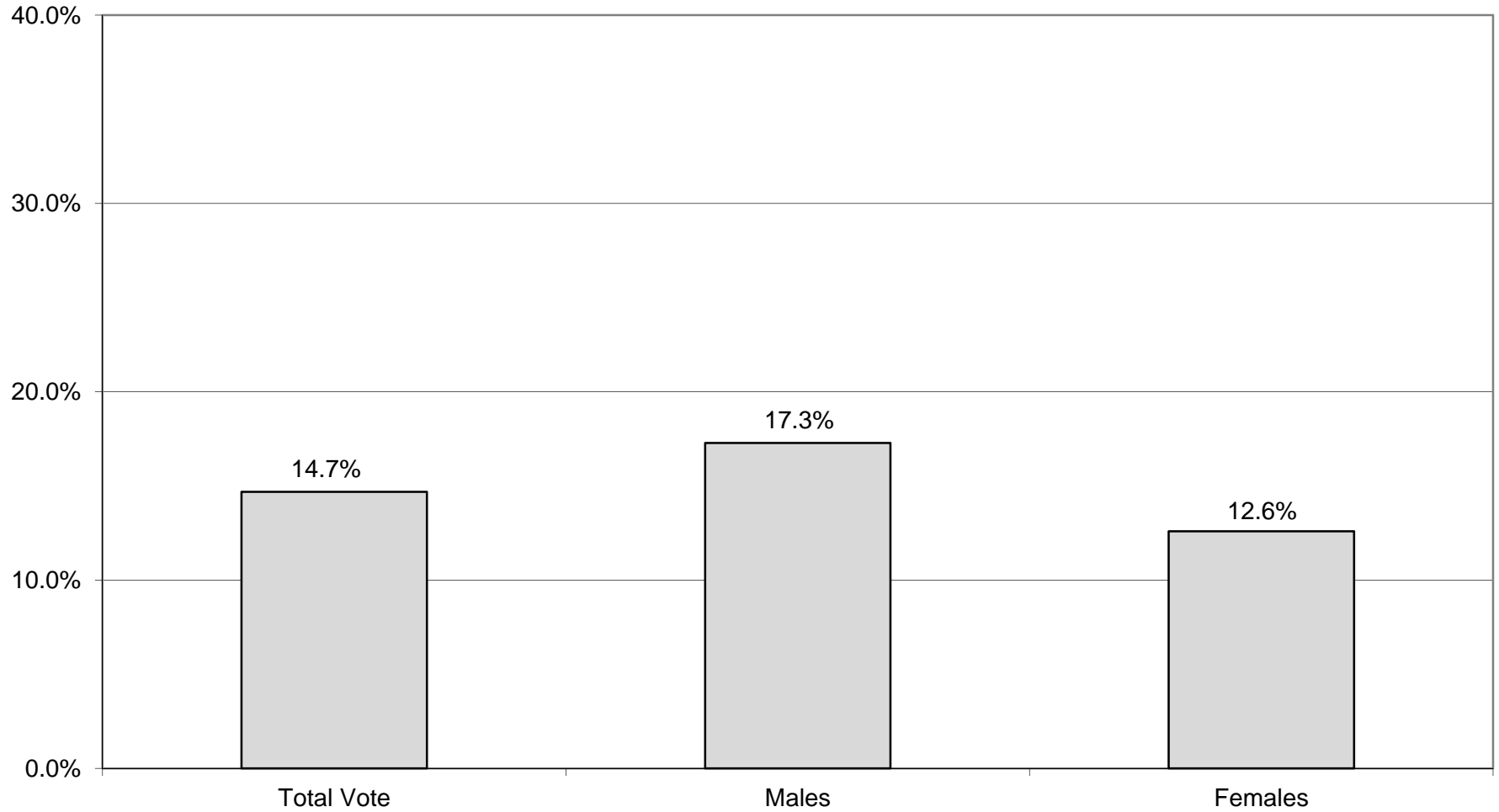
LEGISLATIVE DISTRICT OR TOWN CITY	NDOB			18-24			25-34			35-44		
	VOTED	REGISTERED	TURNOUT	VOTED	REGISTERED	TURNOUT	VOTED	REGISTERED	TURNOUT	VOTED	REGISTERED	TURNOUT
Leg. Dist. 07	0	0	0.00%	0	0	0.00%	0	2	0.00%	0	2	0.00%
Leg. Dist. 16	0	0	0.00%	0	0	0.00%	0	0	0.00%	0	0	0.00%
Leg. Dist. 21	0	0	0.00%	0	5	0.00%	2	25	8.00%	3	19	15.79%
Leg. Dist. 22	0	0	0.00%	1	8	12.50%	2	23	8.70%	3	24	12.50%
Leg. Dist. 23	0	0	0.00%	0	2	0.00%	3	9	33.33%	2	9	22.22%
Leg. Dist. 24	0	0	0.00%	0	1	0.00%	3	6	50.00%	1	7	14.29%
Leg. Dist. 25	0	0	0.00%	2	9	22.22%	1	16	6.25%	2	15	13.33%
Leg. Dist. 26	0	0	0.00%	0	1	0.00%	1	18	5.56%	3	16	18.75%
Leg. Dist. 27	0	0	0.00%	0	6	0.00%	1	24	4.17%	1	12	8.33%
Leg. Dist. 28	0	0	0.00%	0	8	0.00%	0	17	0.00%	1	22	4.55%
Leg. Dist. 29	0	0	0.00%	1	4	25.00%	0	25	0.00%	0	27	0.00%
CITY TOTAL:	0	0	0.00%	4	44	9.09%	13	165	7.88%	16	153	10.46%
TOWNS												
Brighton	0	0	0.00%	1	3	33.33%	0	4	0.00%	4	13	30.77%
Chili	0	0	0.00%	0	1	0.00%	1	9	11.11%	2	13	15.38%
Clarkson	0	0	0.00%	0	0	0.00%	0	3	0.00%	0	4	0.00%
East Rochester	0	0	0.00%	0	0	0.00%	0	3	0.00%	1	3	33.33%
Gates	0	0	0.00%	0	5	0.00%	0	6	0.00%	0	16	0.00%
Greece	0	0	0.00%	1	7	14.29%	6	48	12.50%	7	55	12.73%
Hamlin	0	0	0.00%	0	0	0.00%	0	4	0.00%	1	4	25.00%
Henrietta	0	0	0.00%	0	1	0.00%	1	11	9.09%	3	14	21.43%
Irondequoit	0	0	0.00%	0	3	0.00%	4	22	18.18%	4	19	21.05%
Mendon	0	0	0.00%	0	0	0.00%	1	2	50.00%	0	3	0.00%
Ogden	0	0	0.00%	0	3	0.00%	1	5	20.00%	1	15	6.67%
Parma	0	0	0.00%	1	1	100.00%	0	6	0.00%	0	16	0.00%
Penfield	0	0	0.00%	0	1	0.00%	1	5	20.00%	0	15	0.00%
Perinton	0	0	0.00%	0	1	0.00%	1	11	9.09%	3	14	21.43%
Pittsford	0	0	0.00%	0	1	0.00%	1	2	50.00%	0	1	0.00%
Riga	0	0	0.00%	0	1	0.00%	0	2	0.00%	0	5	0.00%
Rush	0	0	0.00%	0	0	0.00%	0	4	0.00%	1	2	50.00%
Sweden	0	0	0.00%	0	0	0.00%	0	3	0.00%	3	11	27.27%
Webster	0	0	0.00%	0	1	0.00%	1	9	11.11%	4	17	23.53%
Wheatland	0	0	0.00%	0	1	0.00%	0	3	0.00%	0	3	0.00%
TOWNS TOTAL:	0	0	0.00%	3	30	10.00%	18	162	11.11%	34	243	13.99%
GRAND TOTAL:	0	0	0.00%	7	74	9.46%	31	327	9.48%	50	396	12.63%

2015 GENERAL ELECTION  
WORKING FAMILIES TURNOUT BY AGE

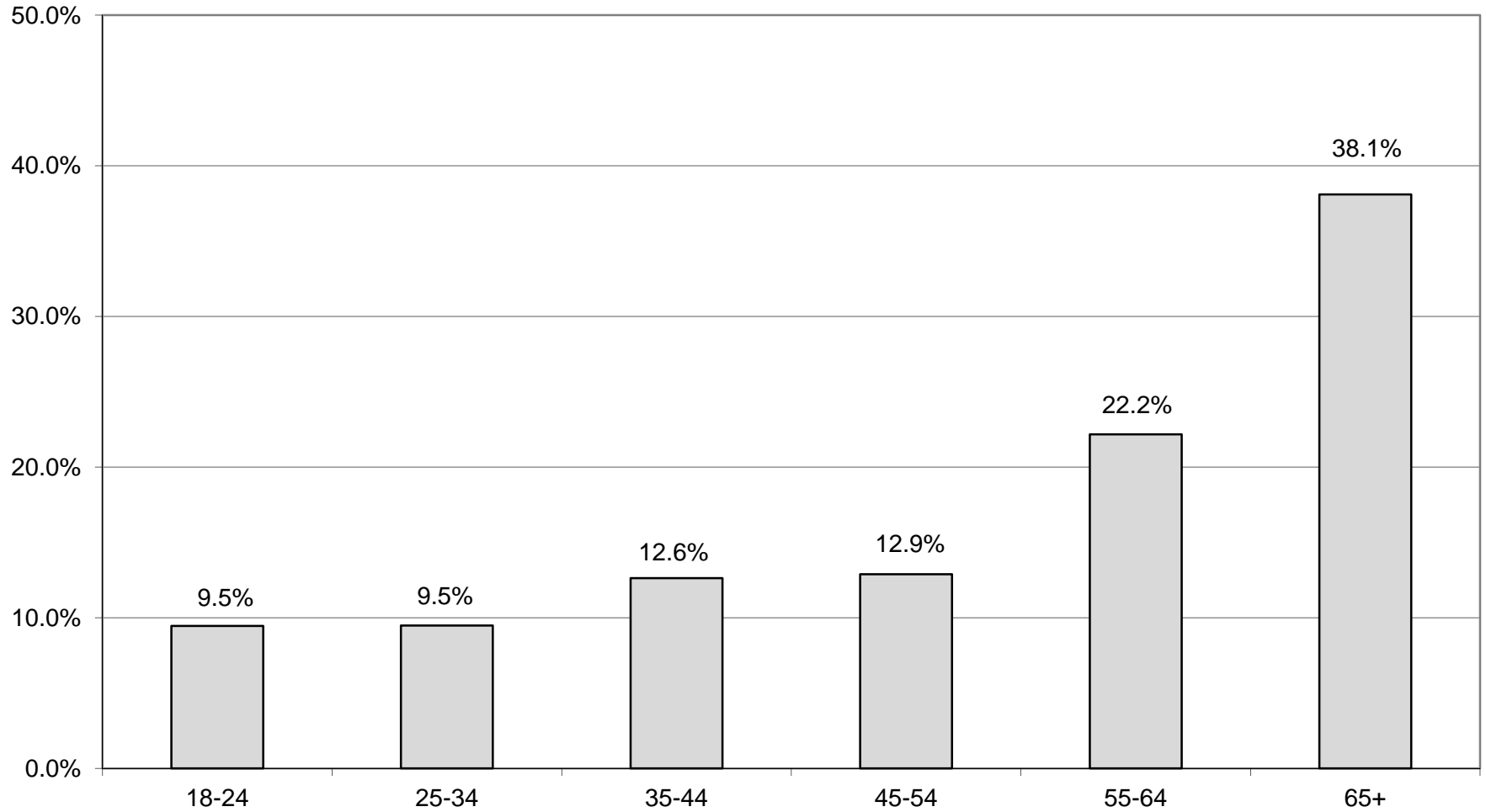
LT/LD SUMMARY  
Part 2 of 2

LEGISLATIVE DISTRICT OR TOWN	45-54			55-64			65+		
	VOTED	REGISTERED	TURNOUT	VOTED	REGISTERED	TURNOUT	VOTED	REGISTERED	TURNOUT
CITY									
Leg. Dist. 07	0	0	0.00%	1	2	50.00%	0	0	0.00%
Leg. Dist. 16	0	0	0.00%	0	0	0.00%	0	0	0.00%
Leg. Dist. 21	3	17	17.65%	1	7	14.29%	1	2	50.00%
Leg. Dist. 22	1	17	5.88%	1	7	14.29%	0	2	0.00%
Leg. Dist. 23	2	6	33.33%	2	9	22.22%	4	4	100.00%
Leg. Dist. 24	2	5	40.00%	2	6	33.33%	0	0	0.00%
Leg. Dist. 25	0	8	0.00%	2	10	20.00%	0	2	0.00%
Leg. Dist. 26	1	10	10.00%	3	8	37.50%	1	1	100.00%
Leg. Dist. 27	1	14	7.14%	1	8	12.50%	1	4	25.00%
Leg. Dist. 28	2	22	9.09%	0	6	0.00%	1	3	33.33%
Leg. Dist. 29	1	13	7.69%	1	7	14.29%	1	2	50.00%
CITY TOTAL:	13	112	11.61%	14	70	20.00%	9	20	45.00%
TOWNS									
Brighton	3	15	20.00%	1	2	50.00%	1	1	100.00%
Chili	4	12	33.33%	4	13	30.77%	0	3	0.00%
Clarkson	0	2	0.00%	0	5	0.00%	0	0	0.00%
East Rochester	0	8	0.00%	0	2	0.00%	0	0	0.00%
Gates	4	23	17.39%	2	9	22.22%	4	12	33.33%
Greece	4	58	6.90%	6	37	16.22%	4	10	40.00%
Hamlin	0	10	0.00%	1	2	50.00%	0	0	0.00%
Henrietta	4	14	28.57%	3	10	30.00%	4	5	80.00%
Irondequoit	3	23	13.04%	3	12	25.00%	2	3	66.67%
Mendon	0	2	0.00%	0	0	0.00%	1	2	50.00%
Ogden	2	12	16.67%	1	7	14.29%	1	2	50.00%
Parma	3	13	23.08%	5	10	50.00%	1	3	33.33%
Penfield	1	11	9.09%	1	4	25.00%	1	8	12.50%
Perinton	0	8	0.00%	2	8	25.00%	2	4	50.00%
Pittsford	2	4	50.00%	1	3	33.33%	2	4	50.00%
Riga	0	3	0.00%	0	2	0.00%	0	0	0.00%
Rush	1	2	50.00%	2	4	50.00%	0	0	0.00%
Sweden	1	3	33.33%	0	6	0.00%	0	1	0.00%
Webster	1	20	5.00%	1	6	16.67%	0	6	0.00%
Wheatland	0	2	0.00%	0	0	0.00%	0	0	0.00%
TOWNS TOTAL:	33	245	13.47%	33	142	23.24%	23	64	35.94%
GRAND TOTAL:	46	357	12.89%	47	212	22.17%	32	84	38.10%

## WORKING FAMILIES TURNOUT - TOTAL AND GENDER 2015 GENERAL ELECTION



## WORKING FAMILIES TURNOUT BY AGE GROUP 2015 GENERAL ELECTION



# **INDEPENDENCE SUMMARY**

2015 GENERAL ELECTION  
INDEPENDENCE TURNOUT BY GENDER

LT/LD SUMMARY

LEGISLATIVE DISTRICT OR TOWN	TOTAL VOTERS			MALES			FEMALES		
	VOTED	REGISTERED	TURNOUT	VOTED	REGISTERED	TURNOUT	VOTED	REGISTERED	TURNOUT
CITY									
Leg. Dist. 07	18	62	29.03%	11	33	33.33%	7	29	24.14%
Leg. Dist. 16	2	2	100.00%	1	1	100.00%	1	1	100.00%
Leg. Dist. 21	72	422	17.06%	33	191	17.28%	39	231	16.88%
Leg. Dist. 22	18	205	8.78%	14	89	15.73%	4	116	3.45%
Leg. Dist. 23	131	559	23.43%	81	286	28.32%	50	273	18.32%
Leg. Dist. 24	66	316	20.89%	34	166	20.48%	32	150	21.33%
Leg. Dist. 25	44	282	15.60%	27	145	18.62%	17	137	12.41%
Leg. Dist. 26	86	341	25.22%	40	157	25.48%	46	184	25.00%
Leg. Dist. 27	55	384	14.32%	27	204	13.24%	28	180	15.56%
Leg. Dist. 28	40	285	14.04%	24	150	16.00%	16	135	11.85%
Leg. Dist. 29	47	305	15.41%	30	162	18.52%	17	143	11.89%
CITY TOTAL:	579	3,163	18.31%	322	1,584	20.33%	257	1,579	16.28%
TOWNS									
Brighton	236	951	24.82%	111	425	26.12%	125	526	23.76%
Chili	164	851	19.27%	79	399	19.80%	85	452	18.81%
Clarkson	37	217	17.05%	19	111	17.12%	18	106	16.98%
East Rochester	65	238	27.31%	26	117	22.22%	39	121	32.23%
Gates	186	844	22.04%	96	391	24.55%	90	453	19.87%
Greece	529	2,926	18.08%	265	1,369	19.36%	264	1,557	16.96%
Hamlin	49	303	16.17%	25	148	16.89%	24	155	15.48%
Henrietta	358	1,016	35.24%	169	479	35.28%	189	537	35.20%
Irondequoit	442	1,661	26.61%	205	768	26.69%	237	893	26.54%
Mendon	73	344	21.22%	44	166	26.51%	29	178	16.29%
Ogden	105	630	16.67%	57	319	17.87%	48	311	15.43%
Parma	92	526	17.49%	52	252	20.63%	40	274	14.60%
Penfield	278	1,362	20.41%	138	631	21.87%	140	731	19.15%
Perinton	366	1,606	22.79%	194	728	26.65%	172	878	19.59%
Pittsford	233	888	26.24%	104	389	26.74%	129	499	25.85%
Riga	44	197	22.34%	26	94	27.66%	18	103	17.48%
Rush	46	111	41.44%	23	47	48.94%	23	64	35.94%
Sweden	104	362	28.73%	52	166	31.33%	52	196	26.53%
Webster	297	1,512	19.64%	153	743	20.59%	144	769	18.73%
Wheatland	36	179	20.11%	22	91	24.18%	14	88	15.91%
TOWNS TOTAL:	3,740	16,724	22.36%	1,860	7,833	23.75%	1,880	8,891	21.14%
GRAND TOTAL:	4,319	19,887	21.72%	2,182	9,417	23.17%	2,137	10,470	20.41%

2015 GENERAL ELECTION  
INDEPENDENCE TURNOUT BY AGE

LT/LD SUMMARY  
Part 1 of 2

LEGISLATIVE DISTRICT OR TOWN CITY	NDOB			18-24			25-34			35-44		
	VOTED	REGISTERED	TURNOUT	VOTED	REGISTERED	TURNOUT	VOTED	REGISTERED	TURNOUT	VOTED	REGISTERED	TURNOUT
Leg. Dist. 07	0	0	0.00%	0	1	0.00%	1	10	10.00%	4	9	44.44%
Leg. Dist. 16	0	0	0.00%	0	0	0.00%	0	0	0.00%	0	0	0.00%
Leg. Dist. 21	0	0	0.00%	1	38	2.63%	6	108	5.56%	18	104	17.31%
Leg. Dist. 22	0	0	0.00%	0	31	0.00%	4	56	7.14%	2	37	5.41%
Leg. Dist. 23	0	0	0.00%	7	41	17.07%	25	198	12.63%	23	98	23.47%
Leg. Dist. 24	0	1	0.00%	1	12	8.33%	13	108	12.04%	18	74	24.32%
Leg. Dist. 25	0	0	0.00%	1	31	3.23%	6	74	8.11%	8	56	14.29%
Leg. Dist. 26	0	0	0.00%	1	19	5.26%	7	72	9.72%	9	63	14.29%
Leg. Dist. 27	0	0	0.00%	2	42	4.76%	9	81	11.11%	11	74	14.86%
Leg. Dist. 28	0	0	0.00%	2	19	10.53%	3	54	5.56%	3	66	4.55%
Leg. Dist. 29	0	0	0.00%	0	27	0.00%	4	82	4.88%	7	57	12.28%
CITY TOTAL:	0	1	0.00%	15	261	5.75%	78	843	9.25%	103	638	16.14%
TOWNS												
Brighton	0	0	0.00%	3	66	4.55%	20	211	9.48%	33	169	19.53%
Chili	0	0	0.00%	10	87	11.49%	13	181	7.18%	18	165	10.91%
Clarkson	0	0	0.00%	3	23	13.04%	3	32	9.38%	4	42	9.52%
East Rochester	0	0	0.00%	2	21	9.52%	7	56	12.50%	10	38	26.32%
Gates	0	0	0.00%	9	63	14.29%	10	176	5.68%	18	154	11.69%
Greece	0	0	0.00%	24	254	9.45%	33	625	5.28%	67	501	13.37%
Hamlin	0	0	0.00%	1	36	2.78%	2	60	3.33%	8	56	14.29%
Henrietta	0	0	0.00%	18	92	19.57%	44	215	20.47%	55	193	28.50%
Irondequoit	0	0	0.00%	15	113	13.27%	40	379	10.55%	74	352	21.02%
Mendon	0	0	0.00%	1	56	1.79%	5	55	9.09%	7	48	14.58%
Ogden	0	0	0.00%	1	41	2.44%	6	129	4.65%	16	138	11.59%
Parma	0	0	0.00%	2	52	3.85%	9	89	10.11%	12	120	10.00%
Penfield	0	0	0.00%	12	134	8.96%	18	245	7.35%	30	251	11.95%
Perinton	0	0	0.00%	6	133	4.51%	31	276	11.23%	48	281	17.08%
Pittsford	0	0	0.00%	8	113	7.08%	15	135	11.11%	37	155	23.87%
Riga	0	0	0.00%	1	9	11.11%	6	49	12.24%	2	34	5.88%
Rush	0	0	0.00%	3	11	27.27%	2	14	14.29%	5	17	29.41%
Sweden	0	0	0.00%	4	27	14.81%	6	83	7.23%	17	63	26.98%
Webster	0	0	0.00%	5	113	4.42%	21	272	7.72%	37	283	13.07%
Wheatland	0	0	0.00%	3	16	18.75%	3	38	7.89%	4	33	12.12%
TOWNS TOTAL:	0	0	0.00%	131	1,460	8.97%	294	3,320	8.86%	502	3,093	16.23%
GRAND TOTAL:	0	1	0.00%	146	1,721	8.48%	372	4,163	8.94%	605	3,731	16.22%

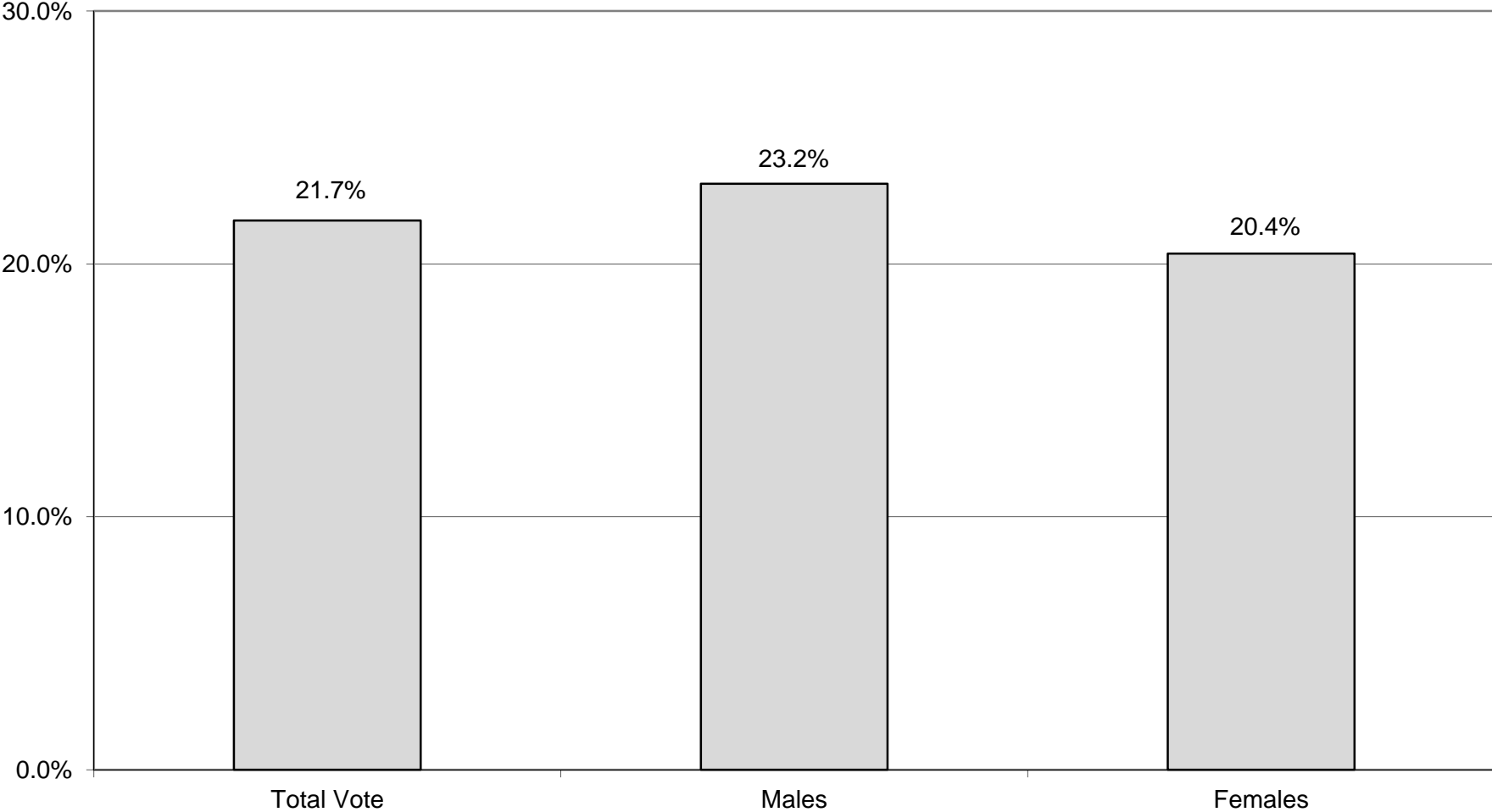
2015 GENERAL ELECTION  
INDEPENDENCE TURNOUT BY AGE

LT/LD SUMMARY  
Part 2 of 2

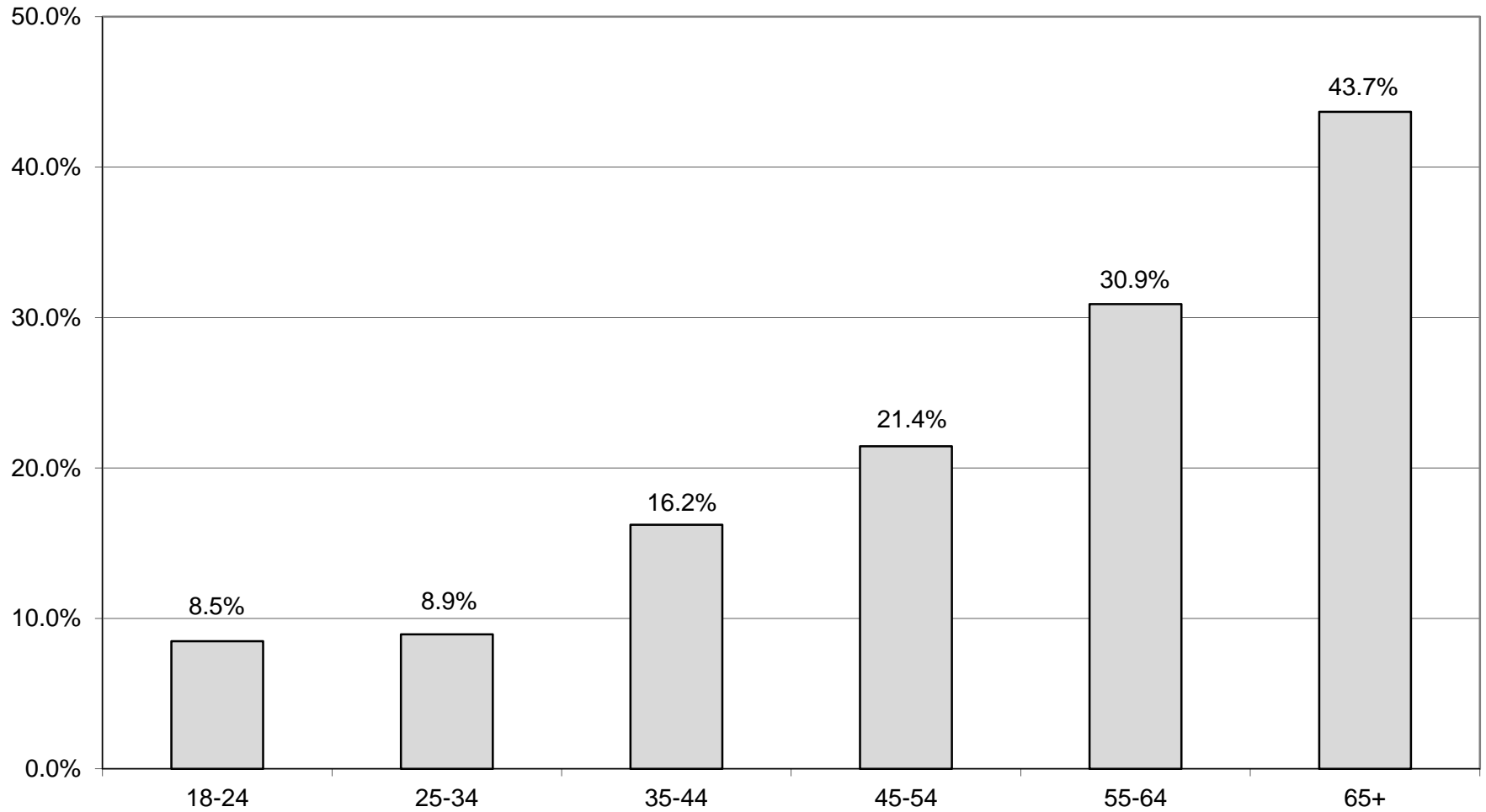
LEGISLATIVE DISTRICT OR TOWN	45-54			55-64			65+		
	VOTED	REGISTERED	TURNOUT	VOTED	REGISTERED	TURNOUT	VOTED	REGISTERED	TURNOUT
CITY									
Leg. Dist. 07	2	13	15.38%	5	14	35.71%	6	15	40.00%
Leg. Dist. 16	0	0	0.00%	0	0	0.00%	2	2	100.00%
Leg. Dist. 21	15	69	21.74%	15	57	26.32%	17	46	36.96%
Leg. Dist. 22	3	31	9.68%	7	33	21.21%	2	17	11.76%
Leg. Dist. 23	26	95	27.37%	31	72	43.06%	19	55	34.55%
Leg. Dist. 24	12	53	22.64%	12	42	28.57%	10	26	38.46%
Leg. Dist. 25	8	51	15.69%	9	37	24.32%	12	33	36.36%
Leg. Dist. 26	19	76	25.00%	28	63	44.44%	22	48	45.83%
Leg. Dist. 27	8	77	10.39%	15	71	21.13%	10	39	25.64%
Leg. Dist. 28	11	68	16.18%	11	49	22.45%	10	29	34.48%
Leg. Dist. 29	7	52	13.46%	15	47	31.91%	14	40	35.00%
CITY TOTAL:	111	585	18.97%	148	485	30.52%	124	350	35.43%
TOWNS									
Brighton	52	164	31.71%	45	147	30.61%	83	194	42.78%
Chili	41	160	25.63%	29	120	24.17%	53	138	38.41%
Clarkson	13	60	21.67%	6	32	18.75%	8	28	28.57%
East Rochester	16	51	31.37%	15	37	40.54%	15	35	42.86%
Gates	31	159	19.50%	49	137	35.77%	69	155	44.52%
Greece	83	591	14.04%	113	447	25.28%	209	508	41.14%
Hamlin	10	69	14.49%	12	46	26.09%	16	36	44.44%
Henrietta	74	201	36.82%	80	165	48.48%	87	150	58.00%
Irondequoit	88	312	28.21%	98	264	37.12%	127	241	52.70%
Mendon	19	68	27.94%	20	60	33.33%	21	57	36.84%
Ogden	18	139	12.95%	31	101	30.69%	33	82	40.24%
Parma	18	99	18.18%	17	84	20.24%	34	82	41.46%
Penfield	57	288	19.79%	52	214	24.30%	109	230	47.39%
Perinton	66	352	18.75%	77	249	30.92%	138	315	43.81%
Pittsford	51	183	27.87%	52	143	36.36%	70	159	44.03%
Riga	11	42	26.19%	12	39	30.77%	12	24	50.00%
Rush	9	27	33.33%	11	18	61.11%	16	24	66.67%
Sweden	20	71	28.17%	30	71	42.25%	27	47	57.45%
Webster	64	332	19.28%	66	257	25.68%	104	255	40.78%
Wheatland	3	35	8.57%	11	37	29.73%	12	20	60.00%
TOWNS TOTAL:	744	3,403	21.86%	826	2,668	30.96%	1,243	2,780	44.71%
GRAND TOTAL:	855	3,988	21.44%	974	3,153	30.89%	1,367	3,130	43.67%



# INDEPENDENCE TURNOUT - TOTAL AND GENDER 2015 GENERAL ELECTION



## INDEPENDENCE TURNOUT BY AGE GROUP 2015 GENERAL ELECTION



# WOMEN'S EQUALITY SUMMARY

2015 GENERAL ELECTION  
WOMEN'S EQUALITY TURNOUT BY GENDER

LT/LD SUMMARY

LEGISLATIVE DISTRICT OR TOWN	TOTAL VOTERS			MALES			FEMALES		
	VOTED	REGISTERED	TURNOUT	VOTED	REGISTERED	TURNOUT	VOTED	REGISTERED	TURNOUT
CITY									
Leg. Dist. 07	0	0	0.00%	0	0	0.00%	0	0	0.00%
Leg. Dist. 16	0	0	0.00%	0	0	0.00%	0	0	0.00%
Leg. Dist. 21	0	0	0.00%	0	0	0.00%	0	0	0.00%
Leg. Dist. 22	0	1	0.00%	0	0	0.00%	0	1	0.00%
Leg. Dist. 23	0	2	0.00%	0	0	0.00%	0	2	0.00%
Leg. Dist. 24	1	1	100.00%	0	0	0.00%	1	1	100.00%
Leg. Dist. 25	0	1	0.00%	0	0	0.00%	0	1	0.00%
Leg. Dist. 26	0	0	0.00%	0	0	0.00%	0	0	0.00%
Leg. Dist. 27	0	0	0.00%	0	0	0.00%	0	0	0.00%
Leg. Dist. 28	0	1	0.00%	0	0	0.00%	0	1	0.00%
Leg. Dist. 29	0	1	0.00%	0	0	0.00%	0	1	0.00%
CITY TOTAL:	1	7	14.29%	0	0	0.00%	1	7	14.29%
TOWNS									
Brighton	0	1	0.00%	0	0	0.00%	0	1	0.00%
Chili	0	0	0.00%	0	0	0.00%	0	0	0.00%
Clarkson	0	0	0.00%	0	0	0.00%	0	0	0.00%
East Rochester	0	0	0.00%	0	0	0.00%	0	0	0.00%
Gates	0	1	0.00%	0	0	0.00%	0	1	0.00%
Greece	0	1	0.00%	0	0	0.00%	0	1	0.00%
Hamlin	0	0	0.00%	0	0	0.00%	0	0	0.00%
Henrietta	0	2	0.00%	0	0	0.00%	0	2	0.00%
Irondequoit	0	1	0.00%	0	0	0.00%	0	1	0.00%
Mendon	0	0	0.00%	0	0	0.00%	0	0	0.00%
Ogden	0	1	0.00%	0	0	0.00%	0	1	0.00%
Parma	0	0	0.00%	0	0	0.00%	0	0	0.00%
Penfield	0	0	0.00%	0	0	0.00%	0	0	0.00%
Perinton	0	0	0.00%	0	0	0.00%	0	0	0.00%
Pittsford	0	1	0.00%	0	0	0.00%	0	1	0.00%
Riga	1	1	100.00%	0	0	0.00%	1	1	100.00%
Rush	0	0	0.00%	0	0	0.00%	0	0	0.00%
Sweden	0	1	0.00%	0	0	0.00%	0	1	0.00%
Webster	0	2	0.00%	0	0	0.00%	0	2	0.00%
Wheatland	0	0	0.00%	0	0	0.00%	0	0	0.00%
TOWNS TOTAL:	1	12	8.33%	0	0	0.00%	1	12	8.33%
GRAND TOTAL:	2	19	10.53%	0	0	0.00%	2	19	10.53%

2015 GENERAL ELECTION  
WOMEN'S EQUALITY TURNOUT BY AGE

LT/LD SUMMARY  
Part 1 of 2

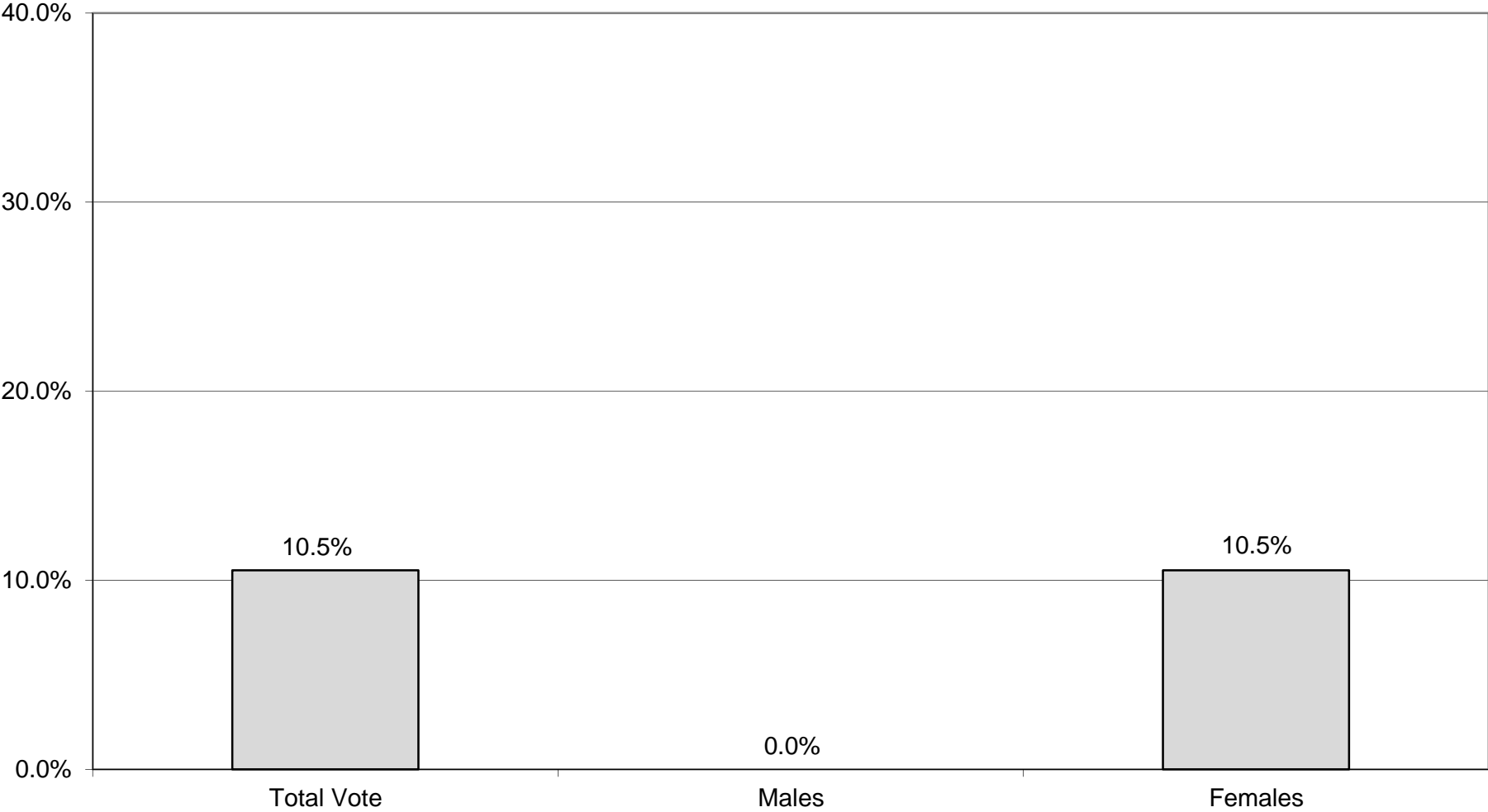
LEGISLATIVE DISTRICT OR TOWN	NDOB			18-24			25-34			35-44		
	VOTED	REGISTERED	TURNOUT	VOTED	REGISTERED	TURNOUT	VOTED	REGISTERED	TURNOUT	VOTED	REGISTERED	TURNOUT
CITY												
Leg. Dist. 07	0	0	0.00%	0	0	0.00%	0	0	0.00%	0	0	0.00%
Leg. Dist. 16	0	0	0.00%	0	0	0.00%	0	0	0.00%	0	0	0.00%
Leg. Dist. 21	0	0	0.00%	0	0	0.00%	0	0	0.00%	0	0	0.00%
Leg. Dist. 22	0	0	0.00%	0	0	0.00%	0	0	0.00%	0	0	0.00%
Leg. Dist. 23	0	0	0.00%	0	0	0.00%	0	2	0.00%	0	0	0.00%
Leg. Dist. 24	0	0	0.00%	0	0	0.00%	0	0	0.00%	0	0	0.00%
Leg. Dist. 25	0	0	0.00%	0	1	0.00%	0	0	0.00%	0	0	0.00%
Leg. Dist. 26	0	0	0.00%	0	0	0.00%	0	0	0.00%	0	0	0.00%
Leg. Dist. 27	0	0	0.00%	0	0	0.00%	0	0	0.00%	0	0	0.00%
Leg. Dist. 28	0	0	0.00%	0	1	0.00%	0	0	0.00%	0	0	0.00%
Leg. Dist. 29	0	0	0.00%	0	1	0.00%	0	0	0.00%	0	0	0.00%
CITY TOTAL:	0	0	0.00%	0	3	0.00%	0	2	0.00%	0	0	0.00%
TOWNS												
Brighton	0	0	0.00%	0	1	0.00%	0	0	0.00%	0	0	0.00%
Chili	0	0	0.00%	0	0	0.00%	0	0	0.00%	0	0	0.00%
Clarkson	0	0	0.00%	0	0	0.00%	0	0	0.00%	0	0	0.00%
East Rochester	0	0	0.00%	0	0	0.00%	0	0	0.00%	0	0	0.00%
Gates	0	0	0.00%	0	0	0.00%	0	0	0.00%	0	0	0.00%
Greece	0	0	0.00%	0	0	0.00%	0	0	0.00%	0	1	0.00%
Hamlin	0	0	0.00%	0	0	0.00%	0	0	0.00%	0	0	0.00%
Henrietta	0	0	0.00%	0	2	0.00%	0	0	0.00%	0	0	0.00%
Irondequoit	0	0	0.00%	0	1	0.00%	0	0	0.00%	0	0	0.00%
Mendon	0	0	0.00%	0	0	0.00%	0	0	0.00%	0	0	0.00%
Ogden	0	0	0.00%	0	1	0.00%	0	0	0.00%	0	0	0.00%
Parma	0	0	0.00%	0	0	0.00%	0	0	0.00%	0	0	0.00%
Penfield	0	0	0.00%	0	0	0.00%	0	0	0.00%	0	0	0.00%
Perinton	0	0	0.00%	0	0	0.00%	0	0	0.00%	0	0	0.00%
Pittsford	0	0	0.00%	0	1	0.00%	0	0	0.00%	0	0	0.00%
Riga	0	0	0.00%	1	1	100.00%	0	0	0.00%	0	0	0.00%
Rush	0	0	0.00%	0	0	0.00%	0	0	0.00%	0	0	0.00%
Sweden	0	0	0.00%	0	1	0.00%	0	0	0.00%	0	0	0.00%
Webster	0	0	0.00%	0	2	0.00%	0	0	0.00%	0	0	0.00%
Wheatland	0	0	0.00%	0	0	0.00%	0	0	0.00%	0	0	0.00%
TOWNS TOTAL:	0	0	0.00%	1	10	10.00%	0	0	0.00%	0	1	0.00%
GRAND TOTAL:	0	0	0.00%	1	13	7.69%	0	2	0.00%	0	1	0.00%

2015 GENERAL ELECTION  
WOMEN'S EQUALITY TURNOUT BY AGE

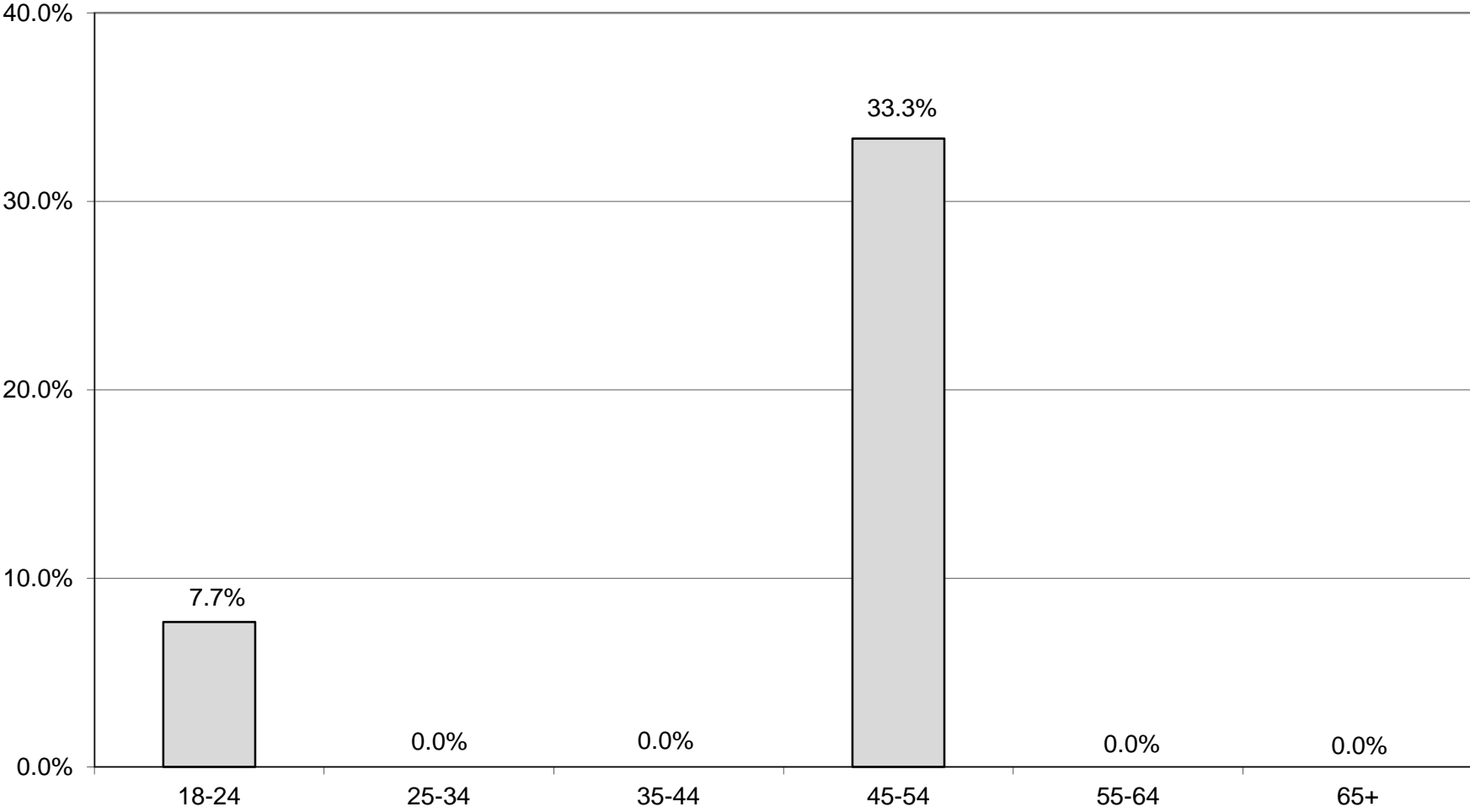
LT/LD SUMMARY  
Part 2 of 2

LEGISLATIVE DISTRICT OR TOWN	45-54			55-64			65+		
	VOTED	REGISTERED	TURNOUT	VOTED	REGISTERED	TURNOUT	VOTED	REGISTERED	TURNOUT
CITY									
Leg. Dist. 07	0	0	0.00%	0	0	0.00%	0	0	0.00%
Leg. Dist. 16	0	0	0.00%	0	0	0.00%	0	0	0.00%
Leg. Dist. 21	0	0	0.00%	0	0	0.00%	0	0	0.00%
Leg. Dist. 22	0	1	0.00%	0	0	0.00%	0	0	0.00%
Leg. Dist. 23	0	0	0.00%	0	0	0.00%	0	0	0.00%
Leg. Dist. 24	1	1	100.00%	0	0	0.00%	0	0	0.00%
Leg. Dist. 25	0	0	0.00%	0	0	0.00%	0	0	0.00%
Leg. Dist. 26	0	0	0.00%	0	0	0.00%	0	0	0.00%
Leg. Dist. 27	0	0	0.00%	0	0	0.00%	0	0	0.00%
Leg. Dist. 28	0	0	0.00%	0	0	0.00%	0	0	0.00%
Leg. Dist. 29	0	0	0.00%	0	0	0.00%	0	0	0.00%
CITY TOTAL:	1	2	50.00%	0	0	0.00%	0	0	0.00%
TOWNS									
Brighton	0	0	0.00%	0	0	0.00%	0	0	0.00%
Chili	0	0	0.00%	0	0	0.00%	0	0	0.00%
Clarkson	0	0	0.00%	0	0	0.00%	0	0	0.00%
East Rochester	0	0	0.00%	0	0	0.00%	0	0	0.00%
Gates	0	1	0.00%	0	0	0.00%	0	0	0.00%
Greece	0	0	0.00%	0	0	0.00%	0	0	0.00%
Hamlin	0	0	0.00%	0	0	0.00%	0	0	0.00%
Henrietta	0	0	0.00%	0	0	0.00%	0	0	0.00%
Irondequoit	0	0	0.00%	0	0	0.00%	0	0	0.00%
Mendon	0	0	0.00%	0	0	0.00%	0	0	0.00%
Ogden	0	0	0.00%	0	0	0.00%	0	0	0.00%
Parma	0	0	0.00%	0	0	0.00%	0	0	0.00%
Penfield	0	0	0.00%	0	0	0.00%	0	0	0.00%
Perinton	0	0	0.00%	0	0	0.00%	0	0	0.00%
Pittsford	0	0	0.00%	0	0	0.00%	0	0	0.00%
Riga	0	0	0.00%	0	0	0.00%	0	0	0.00%
Rush	0	0	0.00%	0	0	0.00%	0	0	0.00%
Sweden	0	0	0.00%	0	0	0.00%	0	0	0.00%
Webster	0	0	0.00%	0	0	0.00%	0	0	0.00%
Wheatland	0	0	0.00%	0	0	0.00%	0	0	0.00%
TOWNS TOTAL:	0	1	0.00%	0	0	0.00%	0	0	0.00%
GRAND TOTAL:	1	3	33.33%	0	0	0.00%	0	0	0.00%

# WOMEN'S EQUALITY TURNOUT - TOTAL AND GENDER 2015 GENERAL ELECTION



# WOMEN'S EQUALITY TURNOUT BY AGE GROUP 2015 GENERAL ELECTION





# **BLANKS SUMMARY**

2015 GENERAL ELECTION  
BLANK TURNOUT BY GENDER

LT/LD SUMMARY

LEGISLATIVE DISTRICT OR TOWN	TOTAL VOTERS			MALES			FEMALES		
	VOTED	REGISTERED	TURNOUT	VOTED	REGISTERED	TURNOUT	VOTED	REGISTERED	TURNOUT
CITY									
Leg. Dist. 07	81	279	29.03%	44	144	30.56%	37	135	27.41%
Leg. Dist. 16	1	1	100.00%	0	0	0.00%	1	1	100.00%
Leg. Dist. 21	412	2,286	18.02%	224	1,062	21.09%	188	1,224	15.36%
Leg. Dist. 22	97	1,658	5.85%	52	682	7.62%	45	976	4.61%
Leg. Dist. 23	720	2,654	27.13%	428	1,410	30.35%	292	1,244	23.47%
Leg. Dist. 24	441	1,689	26.11%	254	892	28.48%	187	797	23.46%
Leg. Dist. 25	199	1,603	12.41%	115	767	14.99%	84	836	10.05%
Leg. Dist. 26	375	1,748	21.45%	189	820	23.05%	186	928	20.04%
Leg. Dist. 27	264	1,932	13.66%	140	952	14.71%	124	980	12.65%
Leg. Dist. 28	167	1,771	9.43%	87	777	11.20%	80	994	8.05%
Leg. Dist. 29	193	1,953	9.88%	107	854	12.53%	86	1,099	7.83%
CITY TOTAL:	2,950	17,574	16.79%	1,640	8,360	19.62%	1,310	9,214	14.22%
TOWNS									
Brighton	1,571	5,113	30.73%	830	2,522	32.91%	741	2,591	28.60%
Chili	1,030	4,577	22.50%	565	2,271	24.88%	465	2,306	20.16%
Clarkson	183	942	19.43%	95	439	21.64%	88	503	17.50%
East Rochester	233	970	24.02%	117	446	26.23%	116	524	22.14%
Gates	958	4,168	22.98%	503	1,976	25.46%	455	2,192	20.76%
Greece	3,157	15,170	20.81%	1,681	7,110	23.64%	1,476	8,060	18.31%
Hamlin	232	1,272	18.24%	139	614	22.64%	93	658	14.13%
Henrietta	1,817	5,404	33.62%	955	2,732	34.96%	862	2,672	32.26%
Irondequoit	2,486	8,383	29.66%	1,302	3,999	32.56%	1,184	4,384	27.01%
Mendon	386	1,570	24.59%	205	782	26.21%	181	788	22.97%
Ogden	651	3,174	20.51%	366	1,547	23.66%	285	1,627	17.52%
Parma	521	2,740	19.01%	288	1,360	21.18%	233	1,380	16.88%
Penfield	1,694	6,631	25.55%	907	3,269	27.75%	787	3,362	23.41%
Perinton	2,339	8,359	27.98%	1,259	4,161	30.26%	1,080	4,198	25.73%
Pittsford	1,304	4,874	26.75%	670	2,365	28.33%	634	2,509	25.27%
Riga	215	933	23.04%	121	454	26.65%	94	479	19.62%
Rush	261	662	39.43%	140	335	41.79%	121	327	37.00%
Sweden	493	1,544	31.93%	245	721	33.98%	248	823	30.13%
Webster	1,775	7,666	23.15%	971	3,669	26.46%	804	3,997	20.12%
Wheatland	181	750	24.13%	99	369	26.83%	82	381	21.52%
TOWNS TOTAL:	21,487	84,902	25.31%	11,458	41,141	27.85%	10,029	43,761	22.92%
GRAND TOTAL:	24,437	102,476	23.85%	13,098	49,501	26.46%	11,339	52,975	21.40%

2015 GENERAL ELECTION  
BLANK TURNOUT BY AGE

LT/LD SUMMARY  
Part 1 of 2

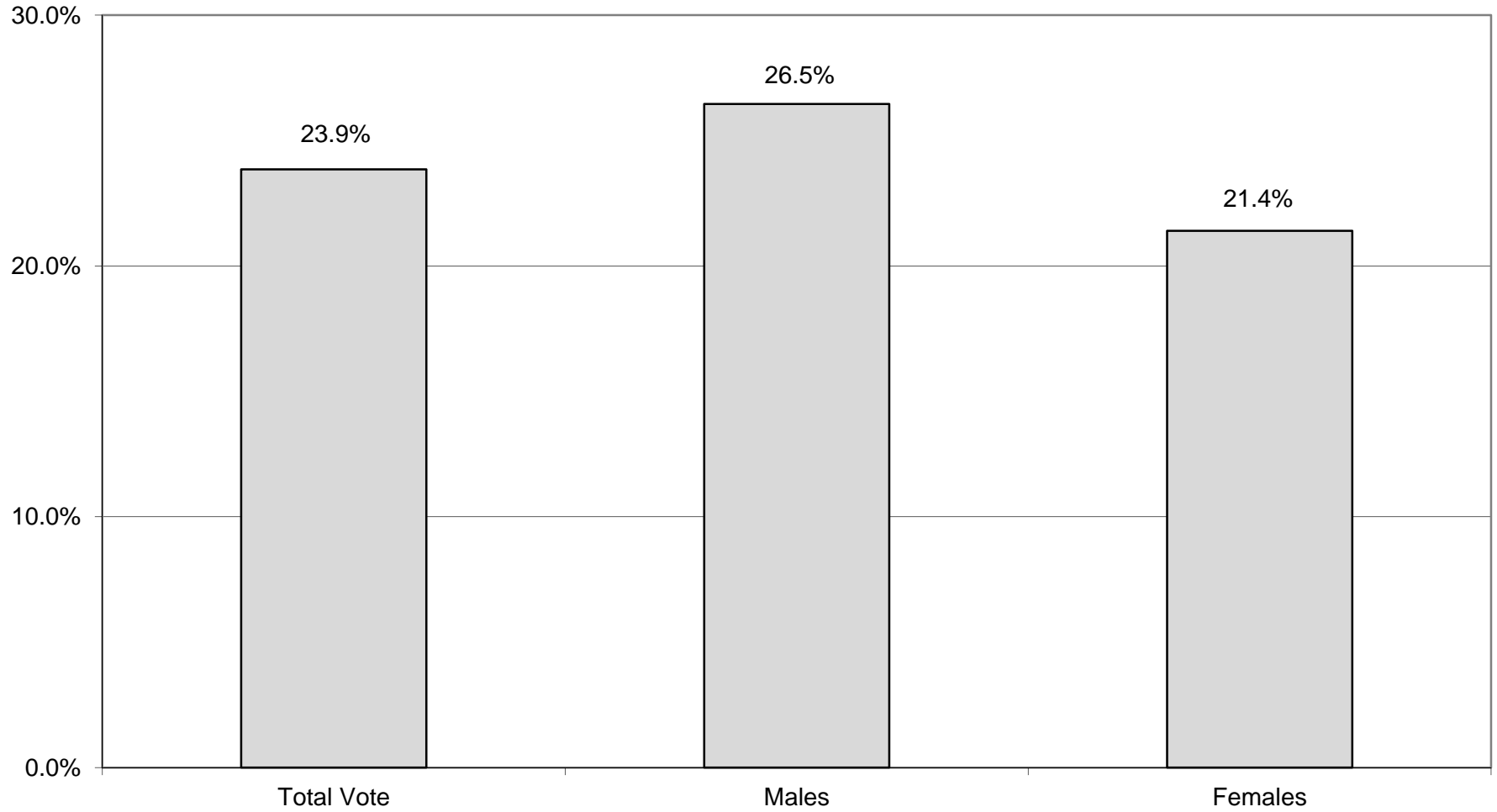
LEGISLATIVE DISTRICT OR TOWN CITY	NDOB			18-24			25-34			35-44		
	VOTED	REGISTERED	TURNOUT	VOTED	REGISTERED	TURNOUT	VOTED	REGISTERED	TURNOUT	VOTED	REGISTERED	TURNOUT
Leg. Dist. 07	0	0	0.00%	2	22	9.09%	7	37	18.92%	5	30	16.67%
Leg. Dist. 16	0	0	0.00%	0	0	0.00%	0	0	0.00%	0	0	0.00%
Leg. Dist. 21	2	5	40.00%	7	229	3.06%	59	594	9.93%	61	451	13.53%
Leg. Dist. 22	0	3	0.00%	5	279	1.79%	13	441	2.95%	16	338	4.73%
Leg. Dist. 23	4	5	80.00%	7	173	4.05%	108	809	13.35%	102	428	23.83%
Leg. Dist. 24	1	2	50.00%	12	120	10.00%	73	542	13.47%	60	283	21.20%
Leg. Dist. 25	0	0	0.00%	6	223	2.69%	48	471	10.19%	29	283	10.25%
Leg. Dist. 26	0	1	0.00%	5	135	3.70%	29	384	7.55%	41	303	13.53%
Leg. Dist. 27	2	5	40.00%	16	276	5.80%	19	412	4.61%	32	368	8.70%
Leg. Dist. 28	0	4	0.00%	4	252	1.59%	7	430	1.63%	18	326	5.52%
Leg. Dist. 29	0	3	0.00%	2	257	0.78%	12	472	2.54%	16	363	4.41%
CITY TOTAL:	9	28	32.14%	66	1,966	3.36%	375	4,592	8.17%	380	3,173	11.98%
TOWNS												
Brighton	10	16	62.50%	28	368	7.61%	97	857	11.32%	168	781	21.51%
Chili	1	12	8.33%	19	344	5.52%	59	896	6.58%	96	746	12.87%
Clarkson	0	0	0.00%	4	75	5.33%	8	155	5.16%	8	163	4.91%
East Rochester	1	1	100.00%	6	104	5.77%	22	213	10.33%	22	144	15.28%
Gates	1	2	50.00%	23	335	6.87%	56	772	7.25%	99	706	14.02%
Greece	11	34	32.35%	56	1,331	4.21%	165	2,698	6.12%	202	2,172	9.30%
Hamlin	0	1	0.00%	7	111	6.31%	6	209	2.87%	20	202	9.90%
Henrietta	3	5	60.00%	55	407	13.51%	154	1,002	15.37%	192	900	21.33%
Irondequoit	14	33	42.42%	50	608	8.22%	172	1,478	11.64%	230	1,309	17.57%
Mendon	0	2	0.00%	6	196	3.06%	19	193	9.84%	33	180	18.33%
Ogden	5	8	62.50%	16	229	6.99%	39	558	6.99%	42	501	8.38%
Parma	0	0	0.00%	12	266	4.51%	18	485	3.71%	35	405	8.64%
Penfield	9	18	50.00%	22	499	4.41%	54	960	5.63%	130	988	13.16%
Perinton	3	8	37.50%	54	889	6.07%	97	1,177	8.24%	174	1,103	15.78%
Pittsford	3	6	50.00%	28	462	6.06%	48	620	7.74%	116	655	17.71%
Riga	0	0	0.00%	4	81	4.94%	11	134	8.21%	7	128	5.47%
Rush	1	1	100.00%	9	45	20.00%	13	91	14.29%	14	65	21.54%
Sweden	0	0	0.00%	17	141	12.06%	25	260	9.62%	51	245	20.82%
Webster	6	17	35.29%	42	590	7.12%	61	1,105	5.52%	118	1,067	11.06%
Wheatland	1	1	100.00%	3	49	6.12%	17	160	10.63%	14	100	14.00%
TOWNS TOTAL:	69	165	41.82%	461	7,130	6.47%	1,141	14,023	8.14%	1,771	12,560	14.10%
GRAND TOTAL:	78	193	40.41%	527	9,096	5.79%	1,516	18,615	8.14%	2,151	15,733	13.67%

2015 GENERAL ELECTION  
BLANK TURNOUT BY AGE

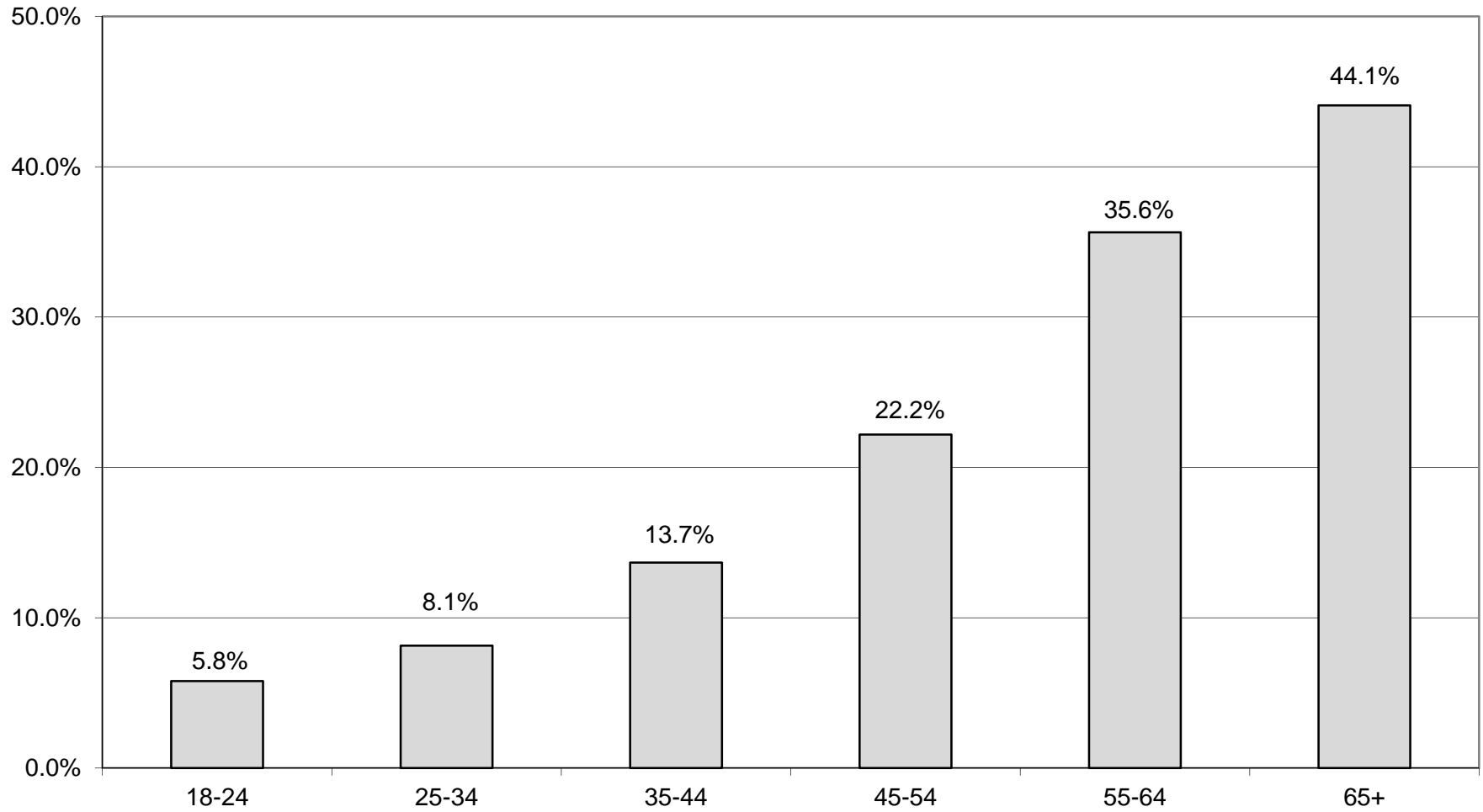
LT/LD SUMMARY  
Part 2 of 2

LEGISLATIVE DISTRICT OR TOWN	45-54			55-64			65+		
	VOTED	REGISTERED	TURNOUT	VOTED	REGISTERED	TURNOUT	VOTED	REGISTERED	TURNOUT
CITY									
Leg. Dist. 07	11	46	23.91%	27	79	34.18%	29	65	44.62%
Leg. Dist. 16	0	0	0.00%	0	0	0.00%	1	1	100.00%
Leg. Dist. 21	54	360	15.00%	110	357	30.81%	119	290	41.03%
Leg. Dist. 22	10	250	4.00%	26	184	14.13%	27	163	16.56%
Leg. Dist. 23	108	393	27.48%	178	415	42.89%	213	431	49.42%
Leg. Dist. 24	78	237	32.91%	113	279	40.50%	104	226	46.02%
Leg. Dist. 25	30	254	11.81%	39	196	19.90%	47	176	26.70%
Leg. Dist. 26	62	299	20.74%	144	372	38.71%	94	254	37.01%
Leg. Dist. 27	27	302	8.94%	67	299	22.41%	101	270	37.41%
Leg. Dist. 28	30	310	9.68%	68	245	27.76%	40	204	19.61%
Leg. Dist. 29	42	306	13.73%	57	309	18.45%	64	243	26.34%
CITY TOTAL:	452	2,757	16.39%	829	2,735	30.31%	839	2,323	36.12%
TOWNS									
Brighton	236	894	26.40%	431	966	44.62%	601	1,231	48.82%
Chili	176	828	21.26%	338	967	34.95%	341	784	43.49%
Clarkson	44	210	20.95%	69	214	32.24%	50	125	40.00%
East Rochester	45	169	26.63%	62	166	37.35%	75	173	43.35%
Gates	161	807	19.95%	259	745	34.77%	359	801	44.82%
Greece	473	2,581	18.33%	1,042	3,310	31.48%	1,208	3,044	39.68%
Hamlin	42	250	16.80%	82	303	27.06%	75	196	38.27%
Henrietta	331	990	33.43%	492	1,036	47.49%	590	1,064	55.45%
Irondequoit	412	1,441	28.59%	740	1,755	42.17%	868	1,759	49.35%
Mendon	88	340	25.88%	118	373	31.64%	122	286	42.66%
Ogden	123	624	19.71%	222	718	30.92%	204	536	38.06%
Parma	91	533	17.07%	163	588	27.72%	202	463	43.63%
Penfield	283	1,236	22.90%	537	1,430	37.55%	659	1,500	43.93%
Perinton	378	1,539	24.56%	671	1,693	39.63%	962	1,950	49.33%
Pittsford	248	983	25.23%	344	975	35.28%	517	1,173	44.08%
Riga	42	197	21.32%	73	226	32.30%	78	167	46.71%
Rush	40	114	35.09%	92	192	47.92%	92	154	59.74%
Sweden	81	283	28.62%	164	353	46.46%	155	262	59.16%
Webster	301	1,503	20.03%	558	1,693	32.96%	689	1,691	40.75%
Wheatland	39	134	29.10%	62	182	34.07%	45	124	36.29%
TOWNS TOTAL:	3,634	15,656	23.21%	6,519	17,885	36.45%	7,892	17,483	45.14%
GRAND TOTAL:	4,086	18,413	22.19%	7,348	20,620	35.64%	8,731	19,806	44.08%

# BLANK TURNOUT - TOTAL AND GENDER 2015 GENERAL ELECTION

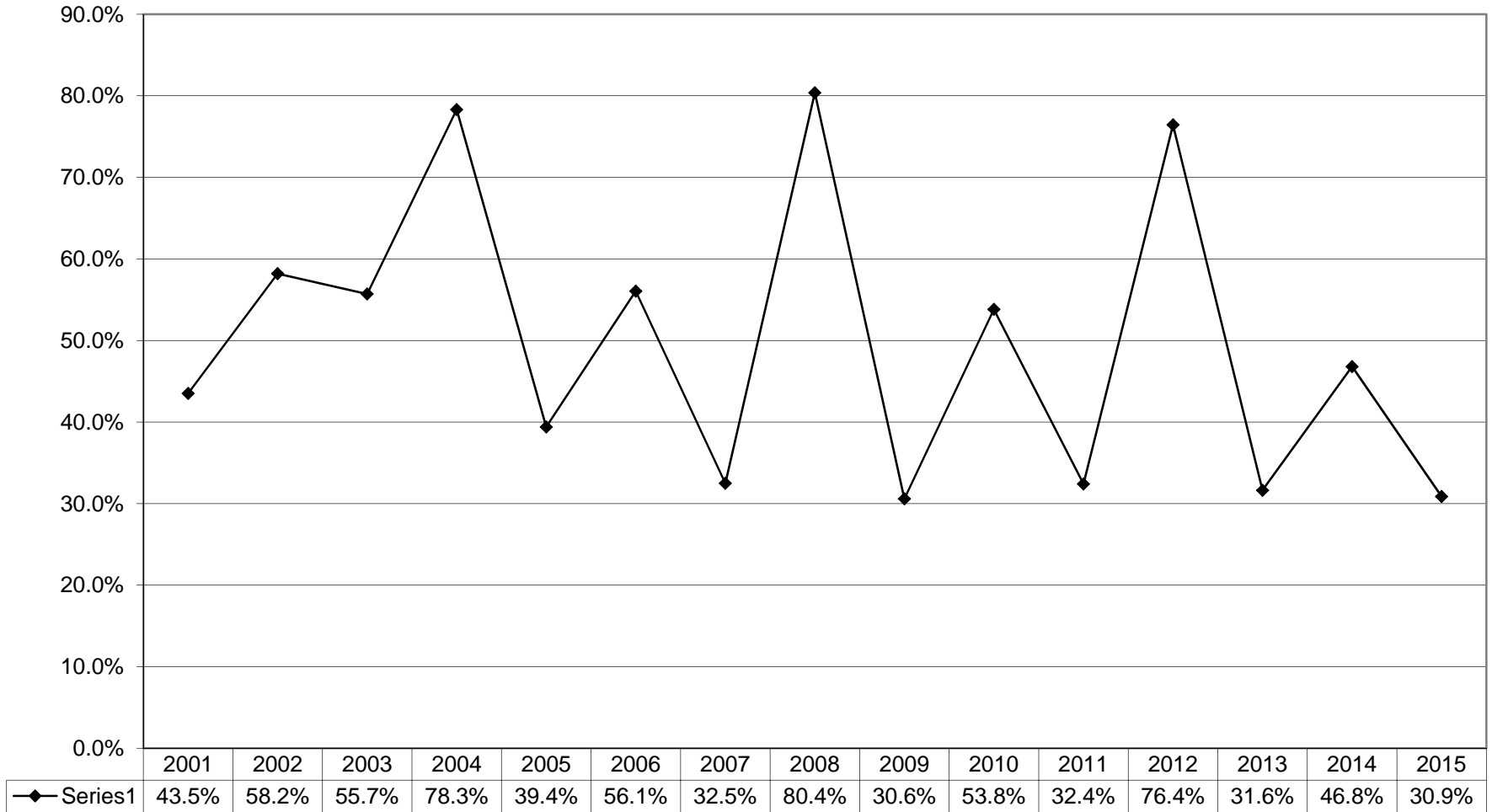


## BLANKS TURNOUT BY AGE GROUP 2015 GENERAL ELECTION



# HISTORICAL DATA

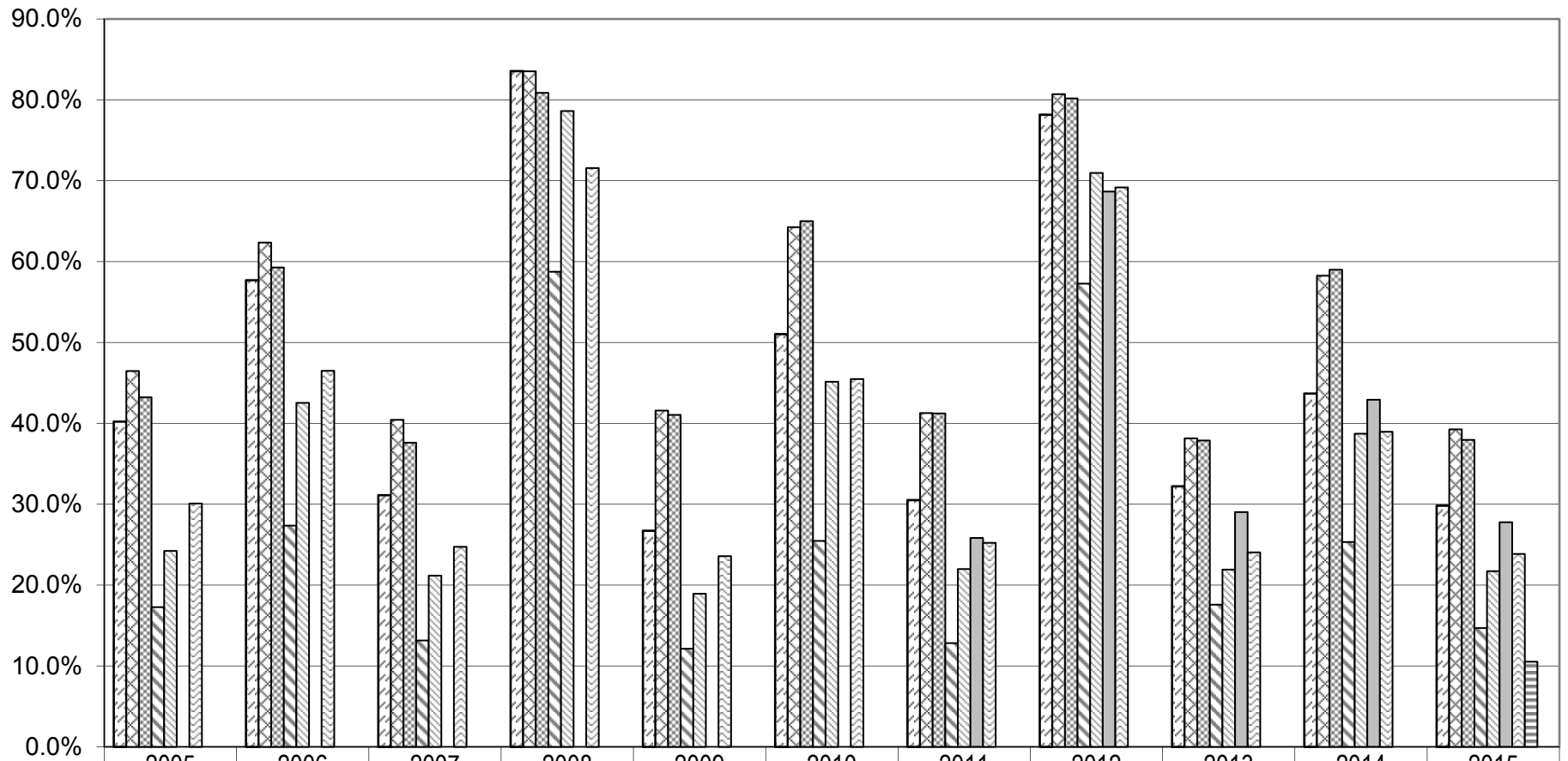
# VOTER TURNOUT FOR THE GENERAL ELECTION 2001 Through 2015





# VOTER TURNOUT BY PARTY

## 2005 Through 2015 General Elections



	2005	2006	2007	2008	2009	2010	2011	2012	2013	2014	2015
Democrats	40.2%	57.7%	31.1%	83.6%	26.7%	51.0%	30.5%	78.2%	32.2%	43.7%	29.8%
Republicans	46.5%	62.4%	40.4%	83.5%	41.6%	64.3%	41.3%	80.7%	38.2%	58.3%	39.3%
Conservative	43.2%	59.3%	37.6%	80.9%	41.1%	65.0%	41.2%	80.2%	37.9%	59.0%	38.0%
Working Families	17.3%	27.4%	13.2%	58.8%	12.1%	25.5%	12.8%	57.3%	17.6%	25.3%	14.7%
Independence	24.2%	42.5%	21.2%	78.6%	18.9%	45.2%	22.0%	71.0%	21.9%	38.7%	21.7%
Green					Party Not Constituted		25.8%	68.7%	29.0%	42.9%	27.8%
Blanks	30.1%	46.5%	24.7%	71.6%	23.6%	45.5%	25.2%	69.2%	24.1%	39.0%	23.9%
Women's Equality					Party Not Constituted						10.5%
Reform					Party Not Constituted						0.0%