



PROFILE OF ELIGIBLE VOTERS 2021 STATE/LOCAL PRIMARY SUMMARY REPORT

Monroe County Board of Elections
39 West Main Street, Rochester, New York 14614

June 15, 2021

Lisa Polito Nicolay
Commissioner of Elections

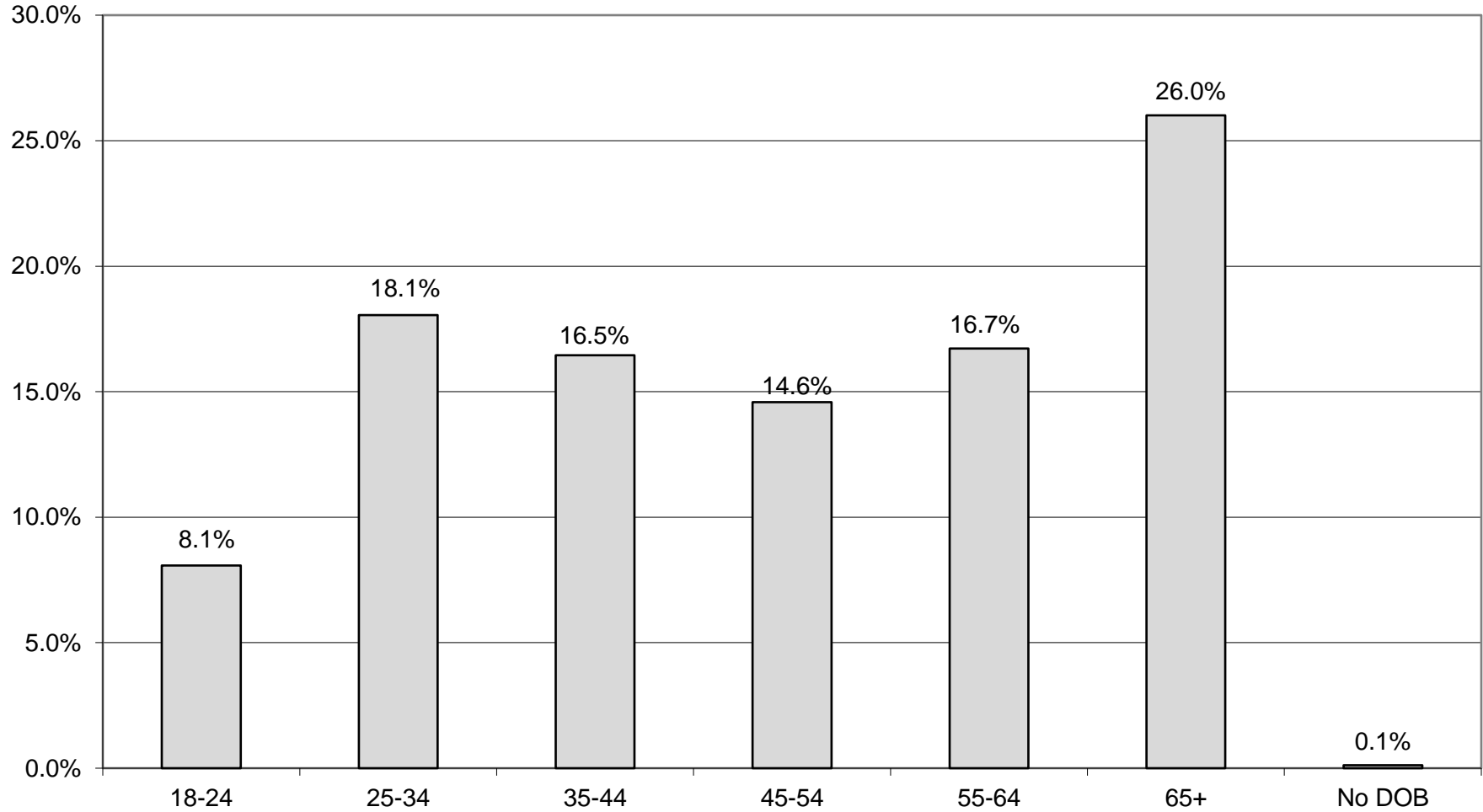
Jackie Ortiz
Commissioner of Elections



**Monroe County Board of Elections
Voter Profile by Age
Eligible Democratic Voters as of 6/4/2021**

Legislative District or Town	Total Party Count	No DOB		Age 18-24		Age 25-34		Age 35-44		Age 45-54		Age 55-64		Age 65 +	
		Total	Percent	Total	Percent	Total	Percent	Total	Percent	Total	Percent	Total	Percent	Total	Percent
CITY															
Legislative District 7	595	2	0.34%	34	5.71%	78	13.11%	77	12.94%	67	11.26%	134	22.52%	203	34.12%
Legislative District 16	6	0	0.00%	0	0.00%	0	0.00%	0	0.00%	0	0.00%	1	16.67%	5	83.33%
Legislative District 21	8,766	10	0.11%	576	6.57%	2,037	23.24%	1,588	18.12%	1,346	15.35%	1,478	16.86%	1,731	19.75%
Legislative District 22	8,211	7	0.09%	583	7.10%	1,572	19.15%	1,381	16.82%	1,319	16.06%	1,548	18.85%	1,801	21.93%
Legislative District 23	7,874	4	0.05%	471	5.98%	2,357	29.93%	1,287	16.34%	881	11.19%	1,090	13.84%	1,784	22.66%
Legislative District 24	5,378	7	0.13%	321	5.97%	1,646	30.61%	967	17.98%	627	11.66%	773	14.37%	1,037	19.28%
Legislative District 25	9,306	12	0.13%	814	8.75%	2,017	21.67%	1,478	15.88%	1,342	14.42%	1,677	18.02%	1,966	21.13%
Legislative District 26	4,847	4	0.08%	354	7.30%	969	19.99%	938	19.35%	808	16.67%	841	17.35%	933	19.25%
Legislative District 27	10,964	7	0.06%	889	8.11%	2,079	18.96%	1,859	16.96%	1,750	15.96%	2,023	18.45%	2,357	21.50%
Legislative District 28	7,153	4	0.06%	672	9.39%	1,423	19.89%	1,331	18.61%	1,252	17.50%	1,301	18.19%	1,170	16.36%
Legislative District 29	8,377	5	0.06%	562	6.71%	1,445	17.25%	1,354	16.16%	1,396	16.66%	1,646	19.65%	1,969	23.50%
CITY Total:	71,477	62	0.09%	5,276	7.38%	15,623	21.86%	12,260	17.15%	10,788	15.09%	12,512	17.50%	14,956	20.92%
TOWNS															
Brighton	12,506	5	0.04%	1,045	8.36%	2,186	17.48%	1,955	15.63%	1,811	14.48%	1,822	14.57%	3,682	29.44%
Chili	6,895	22	0.32%	552	8.01%	1,168	16.94%	1,136	16.48%	974	14.13%	1,162	16.85%	1,881	27.28%
Clarkson	1,125	3	0.27%	90	8.00%	188	16.71%	165	14.67%	180	16.00%	179	15.91%	320	28.44%
East Rochester	1,467	6	0.41%	89	6.07%	320	21.81%	271	18.47%	206	14.04%	246	16.77%	329	22.43%
Gates	7,684	4	0.05%	526	6.85%	1,325	17.24%	1,192	15.51%	1,096	14.26%	1,289	16.78%	2,252	29.31%
Greece	22,285	42	0.19%	1,707	7.66%	3,689	16.55%	3,617	16.23%	3,062	13.74%	3,715	16.67%	6,453	28.96%
Hamlin	1,249	2	0.16%	101	8.09%	196	15.69%	220	17.61%	166	13.29%	225	18.01%	339	27.14%
Henrietta	10,617	6	0.06%	1,082	10.19%	2,015	18.98%	1,710	16.11%	1,468	13.83%	1,663	15.66%	2,673	25.18%
Irondequoit	15,845	29	0.18%	1,039	6.56%	2,787	17.59%	2,730	17.23%	2,225	14.04%	2,630	16.60%	4,405	27.80%
Mendon	2,298	2	0.09%	257	11.18%	343	14.93%	322	14.01%	353	15.36%	453	19.71%	568	24.72%
Ogden	3,889	7	0.18%	329	8.46%	609	15.66%	672	17.28%	581	14.94%	662	17.02%	1,029	26.46%
Parma	2,668	4	0.15%	199	7.46%	376	14.09%	448	16.79%	375	14.06%	461	17.28%	805	30.17%
Penfield	9,925	14	0.14%	880	8.87%	1,335	13.45%	1,732	17.45%	1,465	14.76%	1,543	15.55%	2,956	29.78%
Perinton	12,841	7	0.05%	1,128	8.78%	1,879	14.63%	2,083	16.22%	1,851	14.41%	2,034	15.84%	3,859	30.05%
Pittsford	8,374	7	0.08%	929	11.09%	1,040	12.42%	1,286	15.36%	1,344	16.05%	1,321	15.78%	2,447	29.22%
Riga	957	0	0.00%	95	9.93%	118	12.33%	120	12.54%	135	14.11%	197	20.59%	292	30.51%
Rush	798	1	0.13%	56	7.02%	114	14.29%	98	12.28%	106	13.28%	174	21.80%	249	31.20%
Sweden	2,286	2	0.09%	366	16.01%	352	15.40%	325	14.22%	300	13.12%	302	13.21%	639	27.95%
Webster	10,662	24	0.23%	867	8.13%	1,470	13.79%	1,539	14.43%	1,548	14.52%	1,822	17.09%	3,392	31.81%
Wheatland	1,072	2	0.19%	81	7.56%	216	20.15%	165	15.39%	127	11.85%	179	16.70%	302	28.17%
TOWNS Total:	135,443	189	0.14%	11,418	8.43%	21,726	16.04%	21,786	16.08%	19,373	14.30%	22,079	16.30%	38,872	28.70%
GRAND TOTAL:	206,920	251	0.12%	16,694	8.07%	37,349	18.05%	34,046	16.45%	30,161	14.58%	34,591	16.72%	53,828	26.01%

Profile of Eligible Democratic Party Voters by Age





**Monroe County Board of Elections
Voter Profile by Gender
Eligible Democratic Voters as of 6/4/2021**



Legislative District or Town	Total LT Count	Male		Female		Undeclared		New*	
		Total	Percent	Total	Percent	Total	Percent	Total	Percent
CITY									
Legislative District 7	595	251	42.18%	344	57.82%	0	0.00%	19	3.19%
Legislative District 16	6	3	50.00%	3	50.00%	0	0.00%	0	0.00%
Legislative District 21	8,766	3,466	39.54%	5,291	60.36%	9	0.10%	214	2.44%
Legislative District 22	8,211	3,367	41.01%	4,816	58.65%	28	0.34%	289	3.52%
Legislative District 23	7,874	3,513	44.62%	4,355	55.31%	6	0.08%	215	2.73%
Legislative District 24	5,378	2,378	44.22%	2,979	55.39%	21	0.39%	152	2.83%
Legislative District 25	9,306	3,964	42.60%	5,311	57.07%	31	0.33%	313	3.36%
Legislative District 26	4,847	1,826	37.67%	3,016	62.22%	5	0.10%	107	2.21%
Legislative District 27	10,964	4,350	39.68%	6,597	60.17%	17	0.16%	265	2.42%
Legislative District 28	7,153	2,748	38.42%	4,380	61.23%	25	0.35%	272	3.80%
Legislative District 29	8,377	3,391	40.48%	4,960	59.21%	26	0.31%	223	2.66%
CITY Total:	71,477	29,257	40.93%	42,052	58.83%	168	0.24%	2,069	2.89%
TOWNS									
Brighton	12,506	4,898	39.17%	7,587	60.67%	21	0.17%	291	2.33%
Chili	6,895	2,711	39.32%	4,176	60.57%	8	0.12%	135	1.96%
Clarkson	1,125	440	39.11%	685	60.89%	0	0.00%	26	2.31%
East Rochester	1,467	594	40.49%	873	59.51%	0	0.00%	23	1.57%
Gates	7,684	2,919	37.99%	4,757	61.91%	8	0.10%	114	1.48%
Greece	22,285	8,295	37.22%	13,965	62.67%	25	0.11%	422	1.89%
Hamlin	1,249	451	36.11%	797	63.81%	1	0.08%	21	1.68%
Henrietta	10,617	4,261	40.13%	6,337	59.69%	19	0.18%	265	2.50%
Irondequoit	15,845	6,077	38.35%	9,758	61.58%	10	0.06%	280	1.77%
Mendon	2,298	849	36.95%	1,448	63.01%	1	0.04%	42	1.83%
Ogden	3,889	1,473	37.88%	2,414	62.07%	2	0.05%	81	2.08%
Parma	2,668	997	37.37%	1,669	62.56%	2	0.07%	36	1.35%
Penfield	9,925	3,733	37.61%	6,185	62.32%	7	0.07%	168	1.69%
Perinton	12,841	4,856	37.82%	7,977	62.12%	8	0.06%	247	1.92%
Pittsford	8,374	3,225	38.51%	5,139	61.37%	10	0.12%	166	1.98%
Riga	957	367	38.35%	590	61.65%	0	0.00%	15	1.57%
Rush	798	312	39.10%	486	60.90%	0	0.00%	14	1.75%
Sweden	2,286	885	38.71%	1,394	60.98%	7	0.31%	81	3.54%

*New registrations from the last General Election



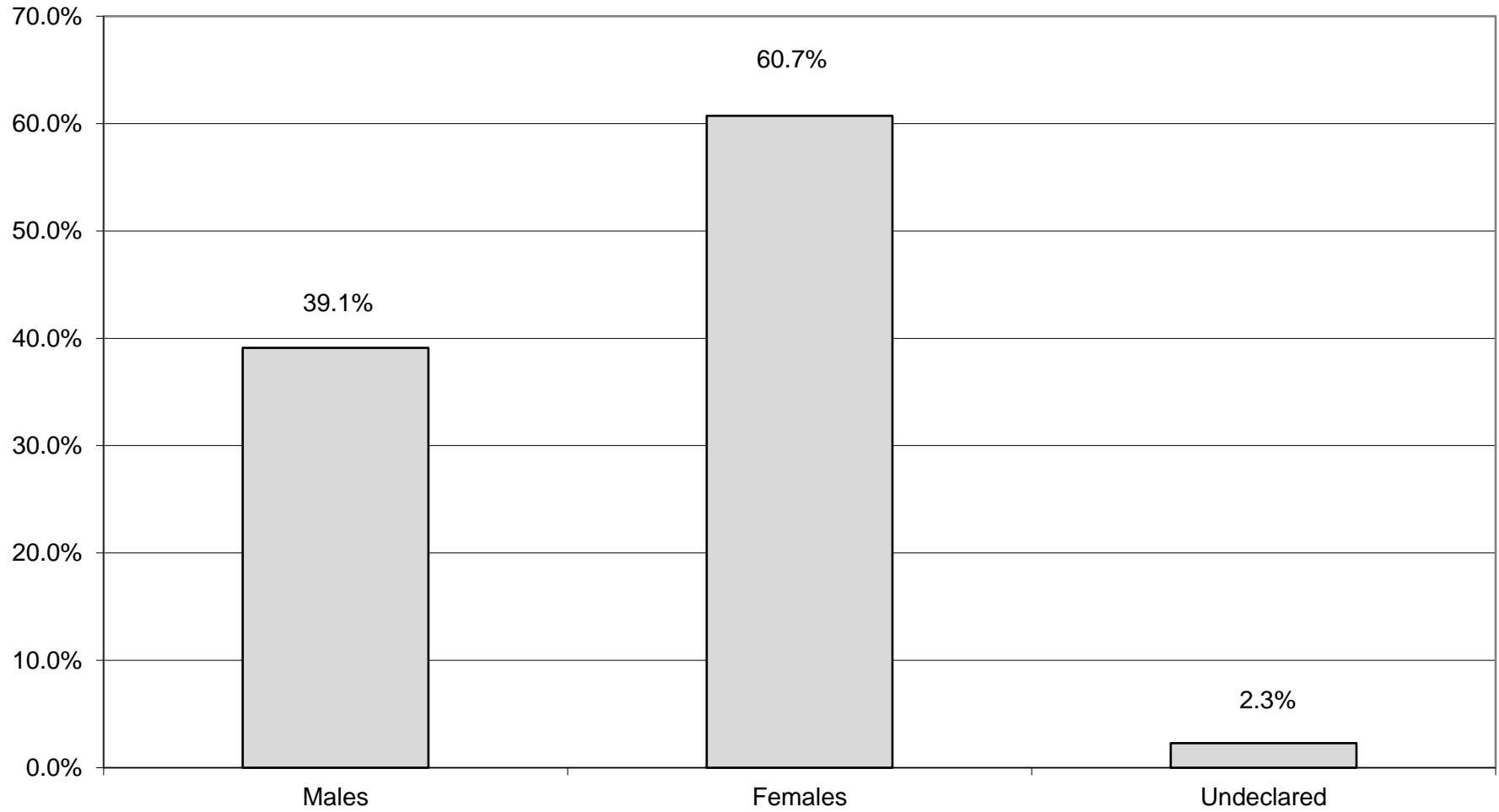
**Monroe County Board of Elections
Voter Profile by Gender
Eligible Democratic Voters as of 6/4/2021**



Legislative District or Town	Total LT Count	Male		Female		Undeclared		New*	
		Total	Percent	Total	Percent	Total	Percent	Total	Percent
Webster	10,662	3,928	36.84%	6,725	63.07%	9	0.08%	198	1.86%
Wheatland	1,072	427	39.83%	643	59.98%	2	0.19%	30	2.80%
TOWNS Total:	135,443	51,698	38.17%	83,605	61.73%	140	0.10%	2,655	1.96%
GRAND TOTAL:	206,920	80,955	39.12%	125,657	60.73%	308	0.15	4,724	2.28%

*New registrations from the last General Election

Profile of Eligible Democratic Party Voters by Gender

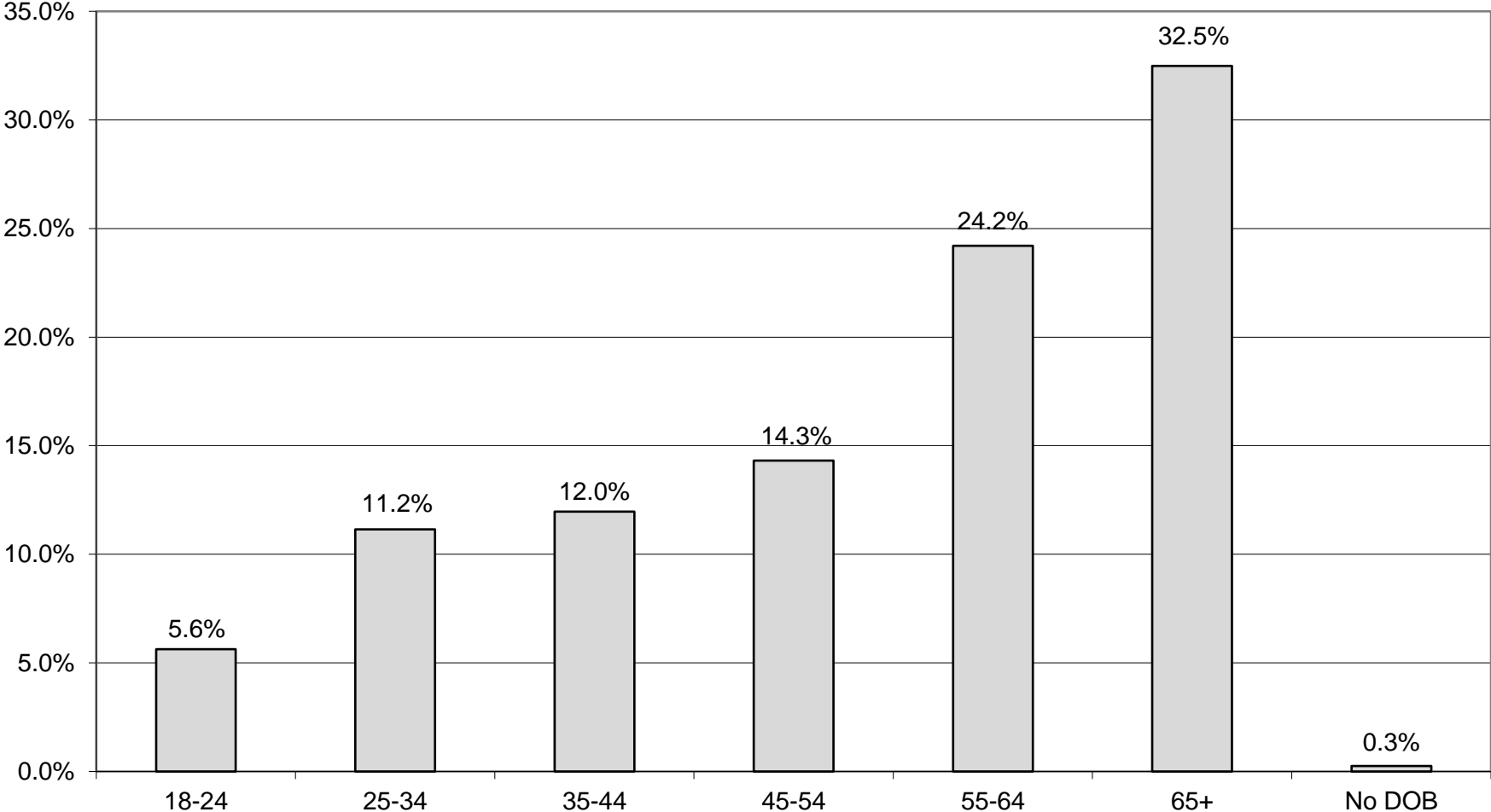




**Monroe County Board of Elections
Voter Profile by Age
Eligible Republican Voters as of 6/4/2021**

Legislative District or Town	Total Party Count	No DOB		Age 18-24		Age 25-34		Age 35-44		Age 45-54		Age 55-64		Age 65 +	
		Total	Percent	Total	Percent	Total	Percent	Total	Percent	Total	Percent	Total	Percent	Total	Percent
TOWNS															
Hamlin	2,524	3	0.12%	142	5.63%	294	11.65%	318	12.60%	380	15.06%	577	22.86%	810	32.09%
Rush	1,080	6	0.56%	61	5.65%	108	10.00%	113	10.46%	136	12.59%	295	27.31%	361	33.43%
TOWNS Total:	3,604	9	0.25%	203	5.63%	402	11.15%	431	11.96%	516	14.32%	872	24.20%	1,171	32.49%
GRAND TOTAL:	3,604	9	0.25%	203	5.63%	402	11.15%	431	11.96%	516	14.32%	872	24.20%	1,171	32.49%

Profile of Eligible Republican Party Voters by Age





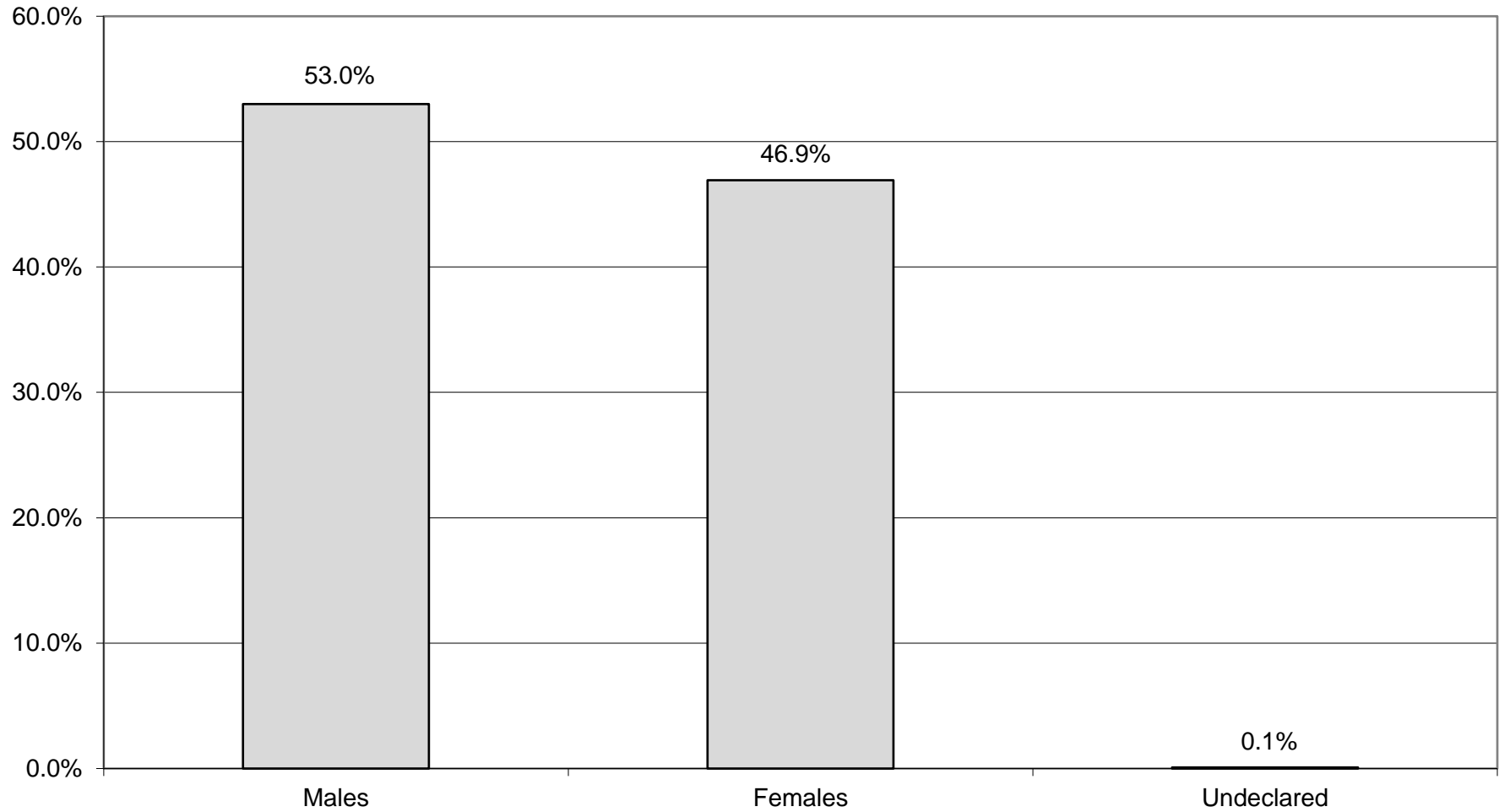
**Monroe County Board of Elections
Voter Profile by Gender
Eligible Republican Voters as of 6/4/2021**



Legislative District or Town	Total LT Count	Male		Female		Undeclared		New*	
		Total	Percent	Total	Percent	Total	Percent	Total	Percent
TOWNS									
Hamlin	2,524	1,348	53.41%	1,174	46.51%	2	0.08%	42	1.66%
Rush	1,080	562	52.04%	517	47.87%	1	0.09%	17	1.57%
TOWNS Total:	3,604	1,910	53.00%	1,691	46.92%	3	0.08%	59	1.64%
GRAND TOTAL:	3,604	1,910	53.00%	1,691	46.92%	3	0.08	59	1.64%

*New registrations from the last General Election

Profile of Eligible Republican Party Voters by Gender

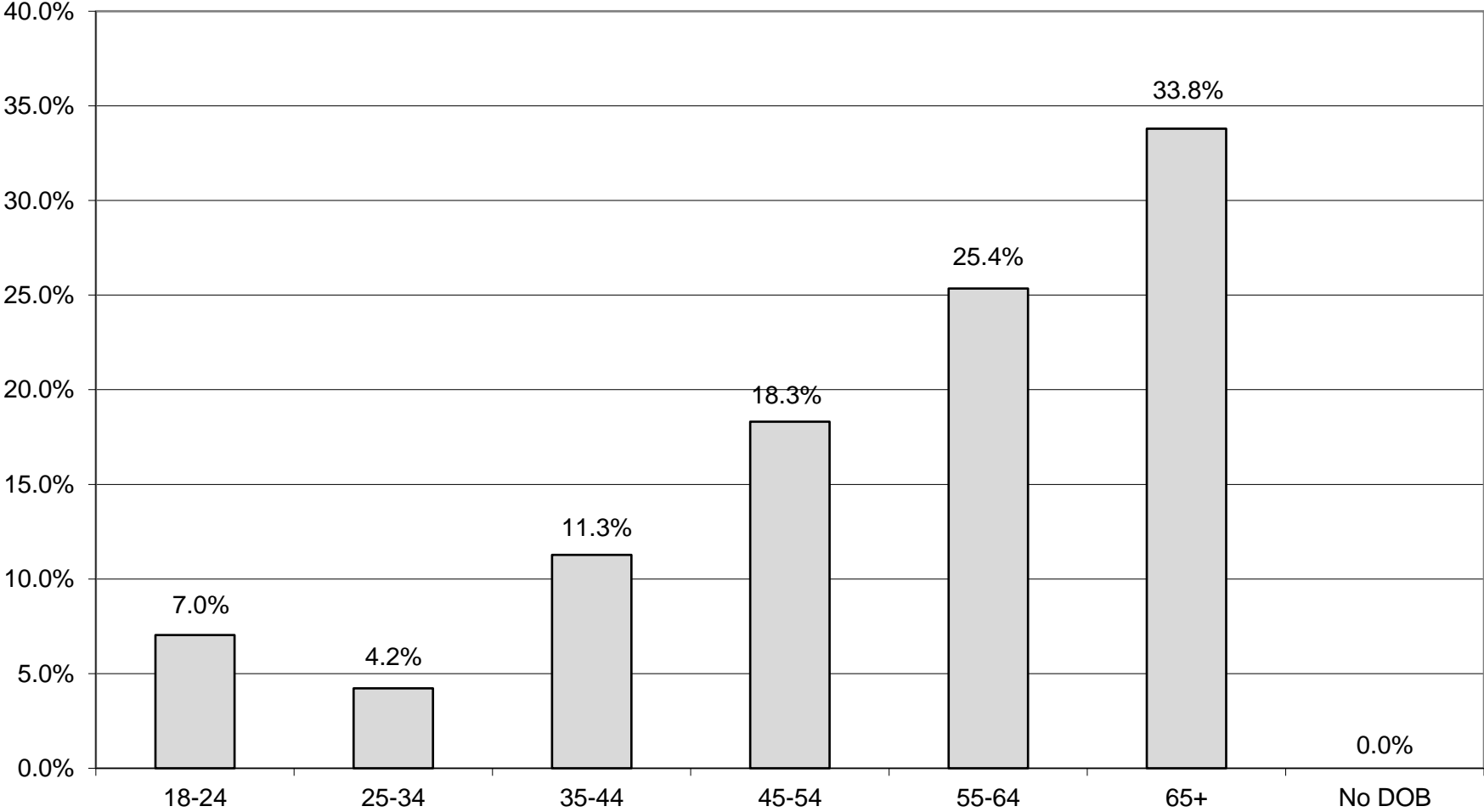




**Monroe County Board of Elections
Voter Profile by Age
Eligible Conservative Voters as of 6/4/2021**

Legislative District or Town	Total Party Count	No DOB		Age 18-24		Age 25-34		Age 35-44		Age 45-54		Age 55-64		Age 65 +	
		Total	Percent	Total	Percent	Total	Percent	Total	Percent	Total	Percent	Total	Percent	Total	Percent
TOWNS															
Rush	71	0	0.00%	5	7.04%	3	4.23%	8	11.27%	13	18.31%	18	25.35%	24	33.80%
TOWNS Total:	71	0	0.00%	5	7.04%	3	4.23%	8	11.27%	13	18.31%	18	25.35%	24	33.80%
GRAND TOTAL:	71	0	0.00%	5	7.04%	3	4.23%	8	11.27%	13	18.31%	18	25.35%	24	33.80%

Profile of Eligible Conservative Party Voters by Age





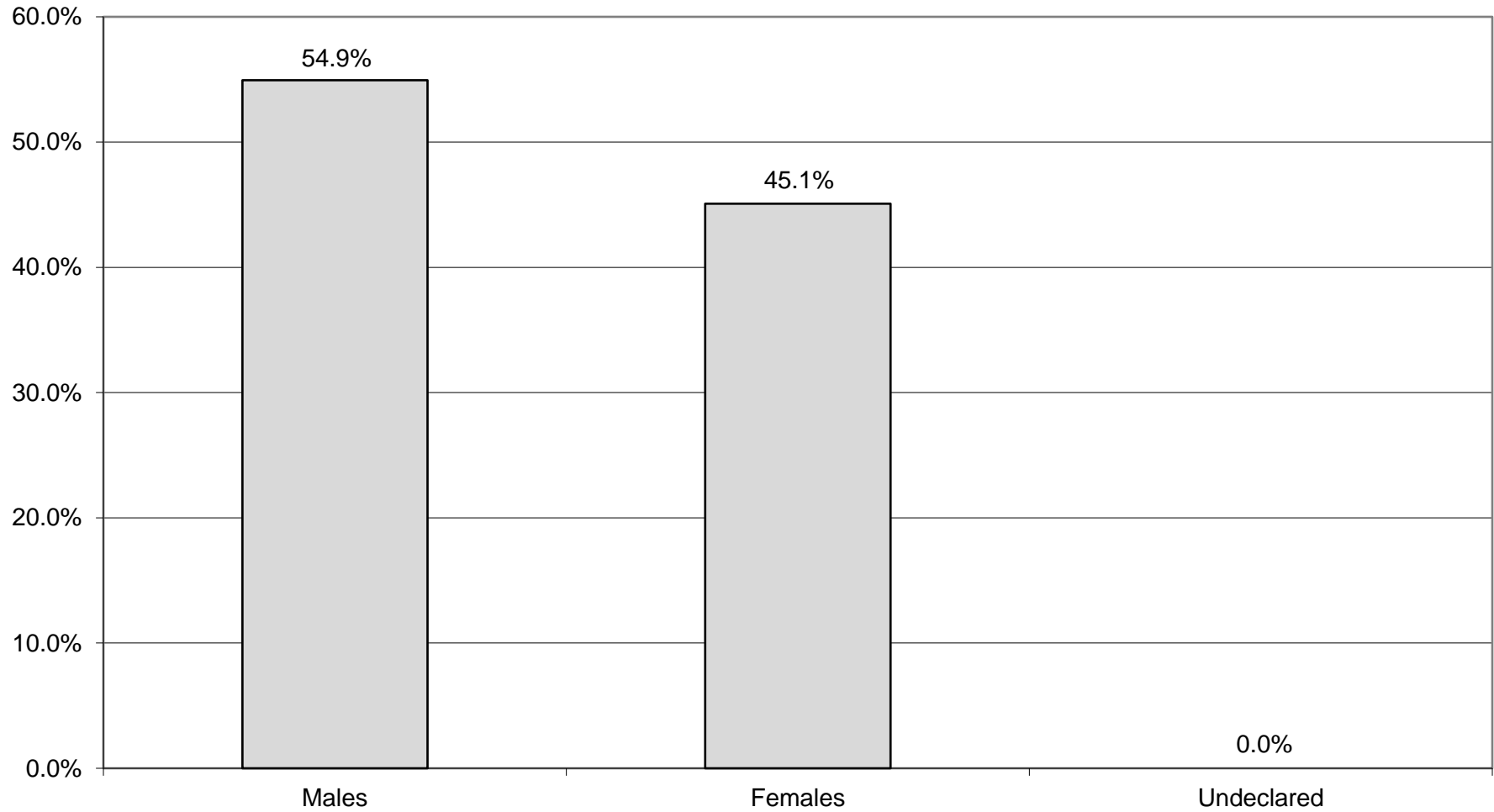
**Monroe County Board of Elections
Voter Profile by Gender
Eligible Conservative Voters as of 6/4/2021**



Legislative District or Town	Total LT Count	Male		Female		Undeclared		New*	
		Total	Percent	Total	Percent	Total	Percent	Total	Percent
TOWNS									
Rush	71	39	54.93%	32	45.07%	0	0.00%	1	1.41%
TOWNS Total:	71	39	54.93%	32	45.07%	0	0.00%	1	1.41%
GRAND TOTAL:	71	39	54.93%	32	45.07%	0	0.00%	1	1.41%

*New registrations from the last General Election

Profile of Eligible Conservative Party Voters by Gender

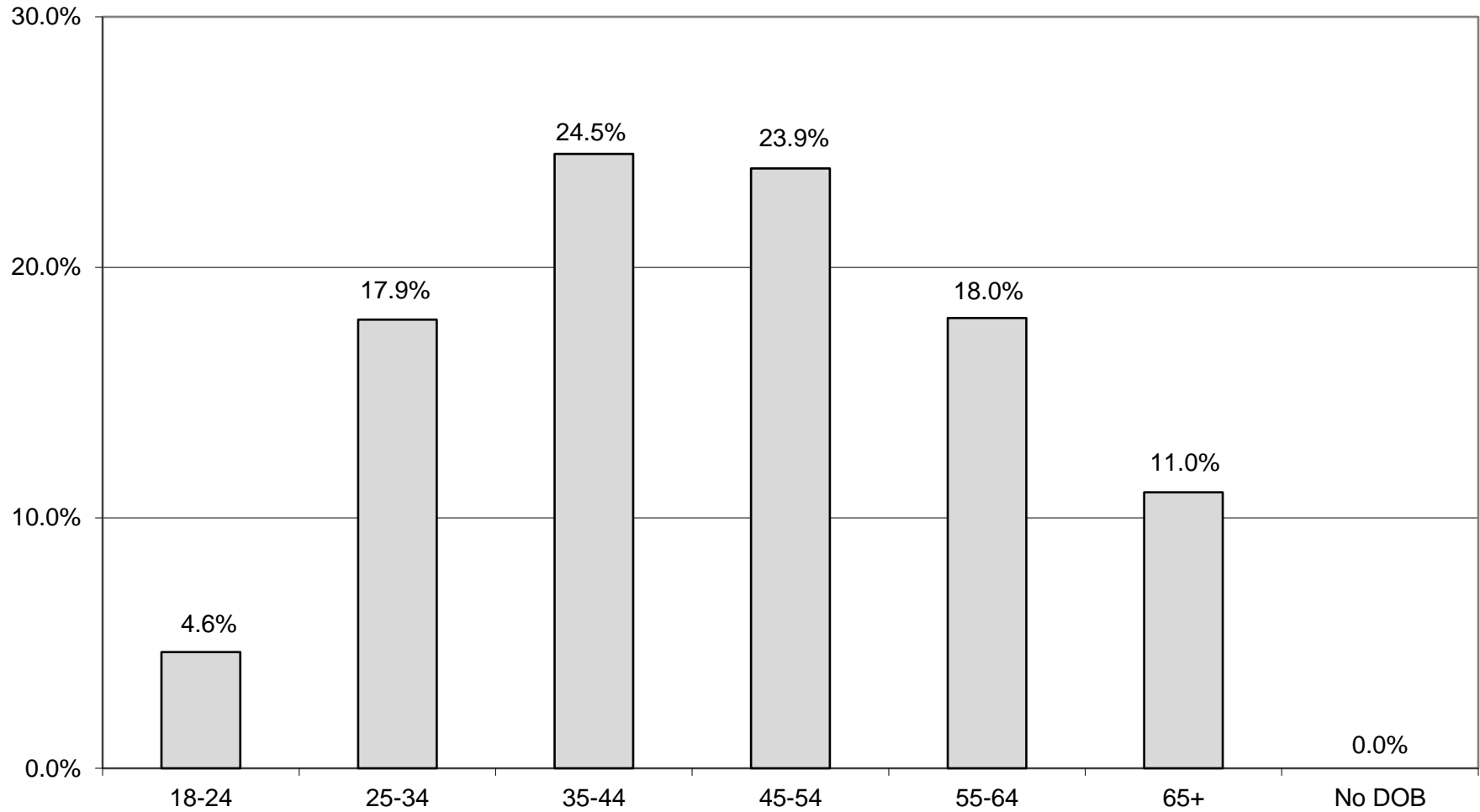




**Monroe County Board of Elections
Voter Profile by Age
Eligible Working Families Voters as of 6/4/2021**

Legislative District or Town	Total Party Count	No DOB		Age 18-24		Age 25-34		Age 35-44		Age 45-54		Age 55-64		Age 65 +	
		Total	Percent	Total	Percent	Total	Percent	Total	Percent	Total	Percent	Total	Percent	Total	Percent
CITY															
Legislative District 7	3	0	0.00%	1	33.33%	0	0.00%	0	0.00%	1	33.33%	0	0.00%	1	33.33%
Legislative District 21	74	0	0.00%	1	1.35%	13	17.57%	25	33.78%	14	18.92%	13	17.57%	8	10.81%
Legislative District 22	87	0	0.00%	2	2.30%	24	27.59%	22	25.29%	24	27.59%	11	12.64%	4	4.60%
Legislative District 23	43	0	0.00%	3	6.98%	13	30.23%	8	18.60%	9	20.93%	4	9.30%	6	13.95%
Legislative District 24	34	0	0.00%	2	5.88%	8	23.53%	12	35.29%	6	17.65%	1	2.94%	5	14.71%
Legislative District 25	68	0	0.00%	5	7.35%	17	25.00%	17	25.00%	12	17.65%	12	17.65%	5	7.35%
Legislative District 26	65	0	0.00%	3	4.62%	14	21.54%	23	35.38%	14	21.54%	9	13.85%	2	3.08%
Legislative District 27	65	0	0.00%	2	3.08%	19	29.23%	20	30.77%	12	18.46%	8	12.31%	4	6.15%
Legislative District 28	101	0	0.00%	5	4.95%	22	21.78%	32	31.68%	19	18.81%	18	17.82%	5	4.95%
Legislative District 29	79	0	0.00%	4	5.06%	15	18.99%	24	30.38%	21	26.58%	13	16.46%	2	2.53%
CITY Total:	619	0	0.00%	28	4.52%	145	23.42%	183	29.56%	132	21.32%	89	14.38%	42	6.79%
TOWNS															
Brighton	48	0	0.00%	2	4.17%	9	18.75%	5	10.42%	12	25.00%	10	20.83%	10	20.83%
Chili	69	0	0.00%	8	11.59%	7	10.14%	14	20.29%	15	21.74%	14	20.29%	11	15.94%
Clarkson	19	0	0.00%	2	10.53%	3	15.79%	2	10.53%	4	21.05%	5	26.32%	3	15.79%
East Rochester	7	0	0.00%	0	0.00%	0	0.00%	2	28.57%	3	42.86%	1	14.29%	1	14.29%
Gates	91	0	0.00%	4	4.40%	16	17.58%	16	17.58%	25	27.47%	14	15.38%	16	17.58%
Greece	245	0	0.00%	8	3.27%	45	18.37%	49	20.00%	58	23.67%	52	21.22%	33	13.47%
Hamlin	21	0	0.00%	1	4.76%	4	19.05%	4	19.05%	4	19.05%	6	28.57%	2	9.52%
Henrietta	66	0	0.00%	6	9.09%	5	7.58%	19	28.79%	15	22.73%	13	19.70%	8	12.12%
Irondequoit	116	0	0.00%	4	3.45%	23	19.83%	31	26.72%	27	23.28%	25	21.55%	6	5.17%
Mendon	14	0	0.00%	0	0.00%	3	21.43%	5	35.71%	4	28.57%	0	0.00%	2	14.29%
Ogden	47	0	0.00%	2	4.26%	7	14.89%	12	25.53%	15	31.91%	10	21.28%	1	2.13%
Parma	45	0	0.00%	1	2.22%	1	2.22%	11	24.44%	17	37.78%	9	20.00%	6	13.33%
Penfield	67	0	0.00%	2	2.99%	9	13.43%	16	23.88%	16	23.88%	10	14.93%	14	20.90%
Perinton	61	0	0.00%	1	1.64%	9	14.75%	19	31.15%	20	32.79%	8	13.11%	4	6.56%
Pittsford	40	0	0.00%	7	17.50%	3	7.50%	5	12.50%	6	15.00%	12	30.00%	7	17.50%
Riga	13	0	0.00%	1	7.69%	0	0.00%	3	23.08%	5	38.46%	4	30.77%	0	0.00%
Rush	13	0	0.00%	0	0.00%	5	38.46%	3	23.08%	1	7.69%	3	23.08%	1	7.69%
Sweden	31	0	0.00%	2	6.45%	3	9.68%	6	19.35%	13	41.94%	4	12.90%	3	9.68%
Webster	86	0	0.00%	1	1.16%	12	13.95%	16	18.60%	18	20.93%	20	23.26%	19	22.09%
Wheatland	7	0	0.00%	0	0.00%	0	0.00%	2	28.57%	3	42.86%	1	14.29%	1	14.29%
TOWNS Total:	1,106	0	0.00%	52	4.70%	164	14.83%	240	21.70%	281	25.41%	221	19.98%	148	13.38%
GRAND TOTAL:	1,725	0	0.00%	80	4.64%	309	17.91%	423	24.52%	413	23.94%	310	17.97%	190	11.01%

Profile of Eligible Working Families Party Voters by Age





**Monroe County Board of Elections
Voter Profile by Gender
Eligible Working Families Voters as of 6/4/2021**



Legislative District or Town	Total LT Count	Male		Female		Undeclared		New*	
		Total	Percent	Total	Percent	Total	Percent	Total	Percent
CITY									
Legislative District 7	3	0	0.00%	3	100.00%	0	0.00%	0	0.00%
Legislative District 21	74	37	50.00%	37	50.00%	0	0.00%	5	6.76%
Legislative District 22	87	42	48.28%	45	51.72%	0	0.00%	10	11.49%
Legislative District 23	43	27	62.79%	16	37.21%	0	0.00%	6	13.95%
Legislative District 24	34	19	55.88%	15	44.12%	0	0.00%	1	2.94%
Legislative District 25	68	29	42.65%	39	57.35%	0	0.00%	3	4.41%
Legislative District 26	65	28	43.08%	37	56.92%	0	0.00%	3	4.62%
Legislative District 27	65	22	33.85%	43	66.15%	0	0.00%	1	1.54%
Legislative District 28	101	45	44.55%	56	55.45%	0	0.00%	4	3.96%
Legislative District 29	79	41	51.90%	38	48.10%	0	0.00%	6	7.59%
CITY Total:	619	290	46.85%	329	53.15%	0	0.00%	39	6.30%
TOWNS									
Brighton	48	23	47.92%	25	52.08%	0	0.00%	2	4.17%
Chili	69	36	52.17%	33	47.83%	0	0.00%	1	1.45%
Clarkson	19	9	47.37%	10	52.63%	0	0.00%	1	5.26%
East Rochester	7	1	14.29%	6	85.71%	0	0.00%	0	0.00%
Gates	91	40	43.96%	51	56.04%	0	0.00%	1	1.10%
Greece	245	113	46.12%	132	53.88%	0	0.00%	7	2.86%
Hamlin	21	9	42.86%	12	57.14%	0	0.00%	0	0.00%
Henrietta	66	29	43.94%	37	56.06%	0	0.00%	1	1.52%
Irondequoit	116	54	46.55%	62	53.45%	0	0.00%	3	2.59%
Mendon	14	8	57.14%	6	42.86%	0	0.00%	0	0.00%
Ogden	47	23	48.94%	24	51.06%	0	0.00%	0	0.00%
Parma	45	25	55.56%	20	44.44%	0	0.00%	0	0.00%
Penfield	67	29	43.28%	38	56.72%	0	0.00%	2	2.99%
Perinton	61	24	39.34%	37	60.66%	0	0.00%	4	6.56%
Pittsford	40	26	65.00%	14	35.00%	0	0.00%	4	10.00%
Riga	13	5	38.46%	8	61.54%	0	0.00%	0	0.00%
Rush	13	6	46.15%	7	53.85%	0	0.00%	0	0.00%
Sweden	31	15	48.39%	16	51.61%	0	0.00%	0	0.00%
Webster	86	46	53.49%	40	46.51%	0	0.00%	2	2.33%

*New registrations from the last General Election



**Monroe County Board of Elections
Voter Profile by Gender
Eligible Working Families Voters as of 6/4/2021**



Legislative District or Town	Total LT Count	Male		Female		Undeclared		New*	
		Total	Percent	Total	Percent	Total	Percent	Total	Percent
Wheatland	7	2	28.57%	5	71.43%	0	0.00%	0	0.00%
TOWNS Total:	1,106	523	47.29%	583	52.71%	0	0.00%	28	2.53%
GRAND TOTAL:	1,725	813	47.13%	912	52.87%	0	0.00	67	3.88%

*New registrations from the last General Election

Profile of Eligible Working Families Party Voters by Gender

