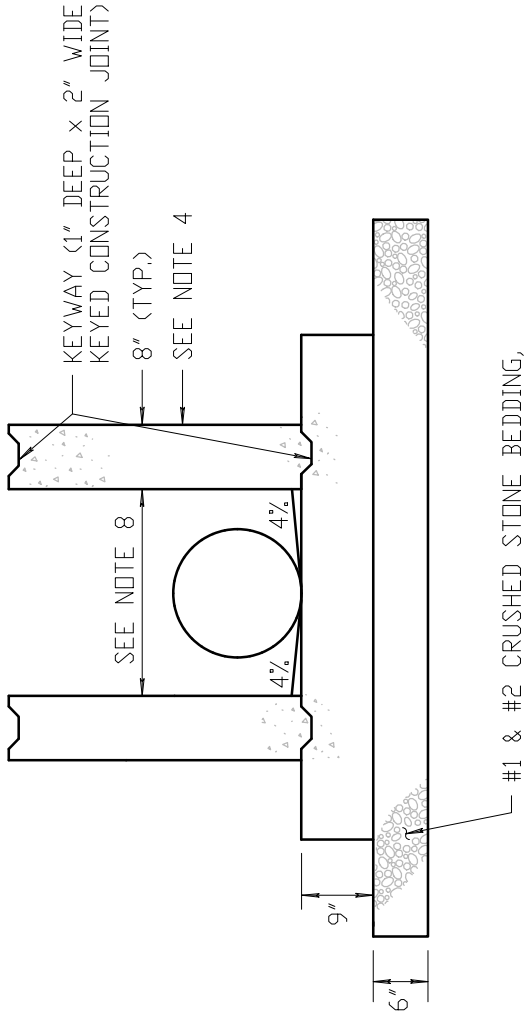


NOTES:

1. WELDED FRAME & RETICULINE GRATE No. 11 - SEE N. Y. S. D. D. T. STANDARD SHEET.
2. REINFORCEMENT SHALL HAVE A COVER OF 2" UNLESS OTHERWISE SHOWN. THE COST OF ALL BAR REINFORCEMENT SHALL BE INCLUDED IN THE PRICE BID FOR DROP INLETS.
3. WHEN APPLICABLE EXTERIORS OF ALL DROP INLETS SHALL BE COATED WITH TWO COATS OF HIGH BUILD COAL TAR PAINT, AFTER INSTALLATION IS COMPLETE AND THE BENCH IS INSTALLED, THE INTERIOR OF ALL DROP INLETS SHALL BE COATED WITH TWO COATS OF EPOXY RESIN DAMP PROOFING.
4. CLASS "A" CONCRETE IS TO BE USED. ALL PIPE CONNECTIONS SHALL BE MADE WITH 100% MORTAR.
5. CLASS "A" CONCRETE BENCHES SHALL BE CAST-IN-PLACE ON ALL STORM DROP INLETS REGARDLESS OF PIPE DIAMETER. COST TO BE INCLUDED IN DROP INLET ITEM.
6. REFER TO FRAME & GRATE ANCHOR DETAIL.
7. STEPS WILL NOT BE ALLOWED.
8. 2'-0" FOR < OR = 18" DIA. PIPE, 2'-8 1/2" FOR > 18" DIA. PIPE.



ELEVATION

DROP INLET NYSDDOT TYPE "S" CAST-IN-PLACE BASE

NOT TO SCALE

9/25/14

REVISED