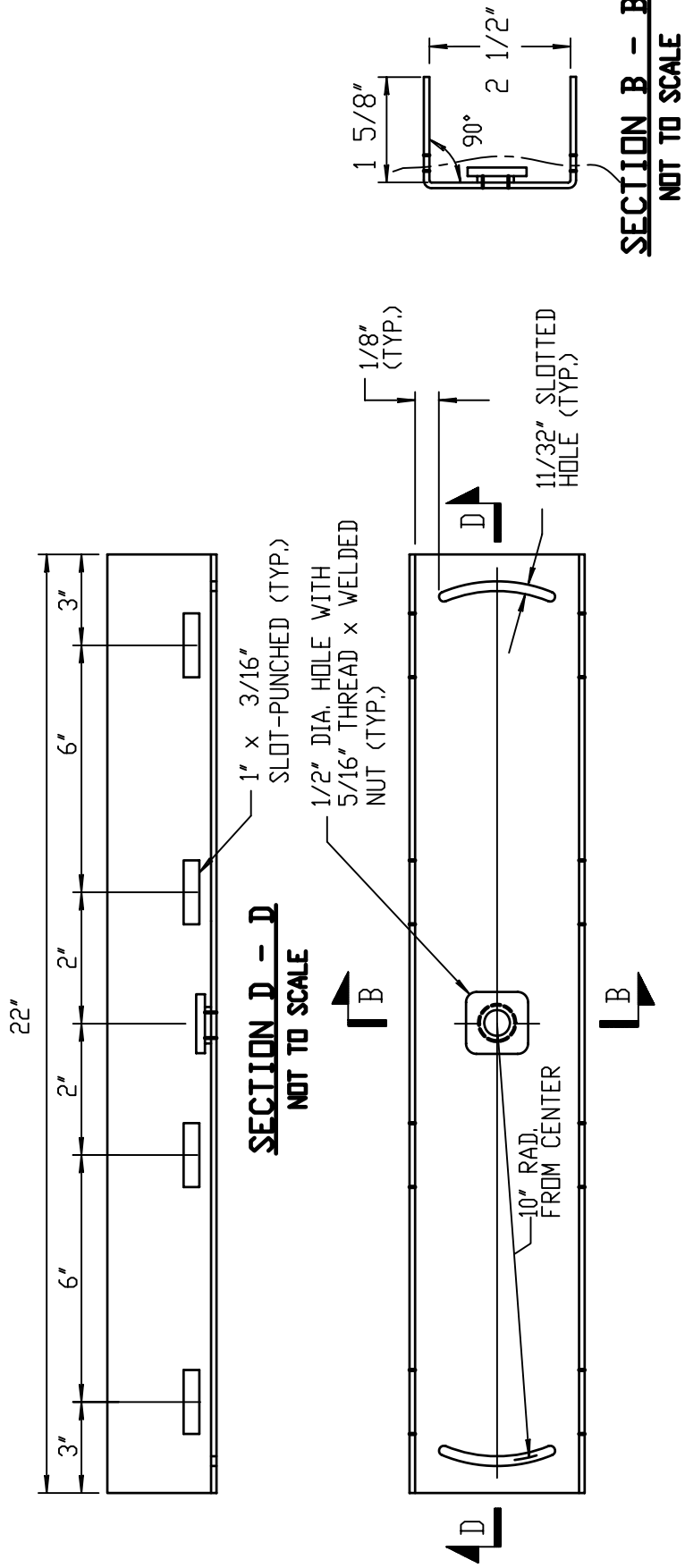


3/7/06

REVISED

NOTES:

1. BRACKET TO BE BANDED TO THE MAST ARM WITH STAINLESS STEEL BANDING MATERIAL. (3/4" WIDE x 0.015" THICK)
2. BRACKET SHALL BE 12 GAUGE GALVANIZED STEEL
3. LONG BRACKET FOR LARGE SIGN (USE 4 BANDS PER BRACKET)



MAST ARM SIGN BRACKET-LONG
NOT TO SCALE