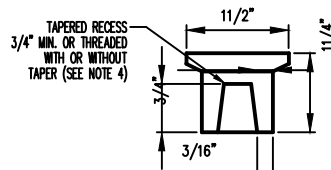
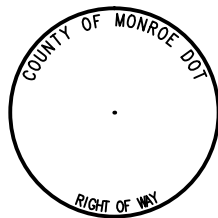
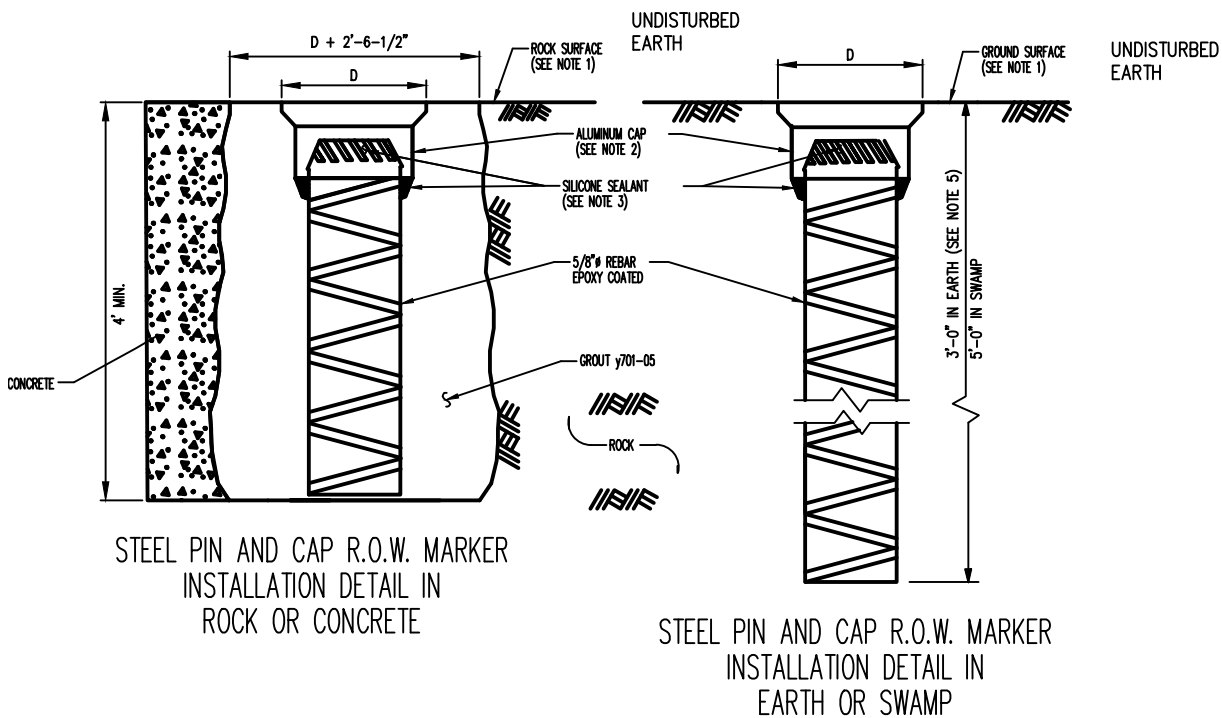


NOTES:

1. CAP SET FLUSH TO SURFACE.
2. SURFACE OF ALUMINUM CAP TO BE IN CONTACT WITH CONCRETE. GROUT SHALL BE THOROUGHLY COATED WITH ZINC CHROMATE PRIMER, 708-04.
3. REBAR SHALL BE DRIVEN WITH A DRIVING CAP ACCEPTABLE TO THE EIC AND DESIGNED TO PREVENT "MUSHROOMING" OF THE TOP OF THE REBAR DURING DRIVING. SILICONE SEALANT IS NOT REQUIRED IF THE R.O.W. MARKER CAP IS FITTED WITH A PREFORMED PLASTIC INSERT.
4. SHAPE OF THE MARKER CAP IS APPROXIMATE. OTHER SHAPES WILL BE ACCEPTED IF THEY CONFORM TO THE MINIMUM WEIGHT AND DIMENSIONS GIVEN IN THE MARKER CAP DETAIL. THE MARKER CAP SHALL FIT TIGHTLY TO THE REBAR. MARKER CAPS WHICH MAY BE REMOVED FROM THE REBAR WITH MINIMUM OR MODERATE EFFORT WILL NOT BE ACCEPTED.
5. LENGTH OF REBAR MAY BE REDUCED A.O.B.E. IF AN OBSTRUCTION WHICH CANNOT BE PENETRATED IS ENCOUNTERED. HOWEVER, THE LENGTH OF THE SHANK WILL NOT BE LESS THAN 2'-0" IN HARD, DENSE, OR STONY SOIL. REBAR TO BE EPOXY COATED.
6. ALUMINUM CAP SHALL BE MARKED BY A 1/8" DIAMETER DRILL HOLE.



STEEL PIN AND CAP R.O.W. MARKER  
NOT TO SCALE