

The Ballot Marking Device (BMD)

The Ballot Marking Device (BMD) portion of the ImageCast is available to assist the voter in marking the ballot. The BMD allows a voter with disabilities to vote privately and independently, and cast the ballot collectively. The BMD includes headphones, a monitor to enlarge or contrast the ballot, a keypad to navigate and mark the ballot, and paddles or sip & puff options.

The BMD Voter

When you sign in at the Inspector Table, you can request the assistance of the BMD. This feature is located on the end of the ImageCast ballot box, opposite the scanner. You will be given a blank sheet of ballot paper and a district code card (if multiple districts are using the machine) and directed to the BMD. An inspector will enter your district code into the BMD for your ballot and assist you with the headset, monitor, keypad, paddles, or sip & puff. When you are finished making your selections, the ballot will print out with your choices marked. This ballot is concealed in a privacy folder and placed in the scanner where you can once again verify your choices, and cast the ballot.



Ballot Marking Device (BMD)

Checking your Work

1. Mark your ballot by completely darkening in the oval next to your choice.
2. Check your ballot over before leaving the voting booth. Make sure you have marked your choices clearly and have not made any other marks on the ballot.
3. If you make an error, you may return your ballot to Inspectors Table and receive a new one, for up to three ballots.
4. If you have any questions regarding your ballot or require additional assistance, please ask a poll worker for clarification.



MONROE COUNTY BOARD OF ELECTIONS

39 Main St W.
Rochester, NY 14614

Phone: 585-753-1550
Fax: 585-753-1570

David Van Varick, Commissioner
Thomas F Ferrarese, Commissioner

www.monroecounty.gov/elections

How to Vote Using the New ImageCast Voting System

*Voting on the Paper Ballots using an
Optical Scan System*

MONROE COUNTY BOARD OF ELECTIONS

www.monroecounty.gov/elections



Introduction to the Optical Scan Voting System

The Optical Scan voting system allows the voter to hand-mark a paper ballot in the privacy of a voting booth and then deposit the ballot into the scanner to record the vote and secure the ballot in a locked box. Paper ballot voting has the advantage of allowing the voter to clearly review the ballot after filling in the voting ovals and feel confident that their vote is accurately recorded and their ballot preserved. The ImageCast also has a Ballot Marking Device (BMD) feature for voters who require assistance in marking their ballot.

Getting Started

Sign in at the Inspector Table in your Election District as usual. An inspector will locate you in the poll ledger and have you



The Inspector Table

sign your name. You will then be given a ballot, offered an optional folder to protect the privacy of your ballot, and directed to the privacy voting booth.

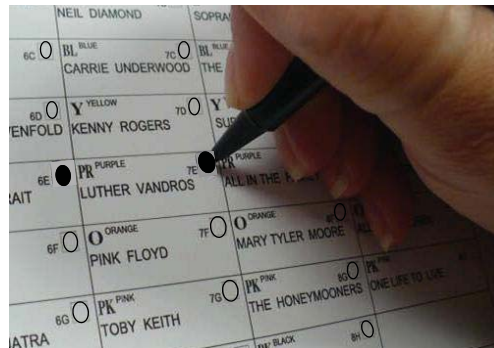
Voting the Ballot

There will be privacy booths at every site; as well as a sit down privacy booth to accommodate a wheelchair. A magnifying sheet to assist in reading the ballot will also be available if needed.



The Voting Booths

Mark your ballot by filling in the voting oval next to the candidate's name you are selecting. Use only the marking pens provided. For a write-in vote, write a name, other than one listed on the ballot for that race, in the box at the bottom of the column under the selected office.



If you make a mistake on the ballot do not try to erase the mark. You must return the ballot to the Election Inspectors table where your ballot will be voided and a new one provided.

When you are finished filling out the ballot, review it to make sure you have voted for the candidates of your choice. Take your completed ballot to the ImageCast Optical Scanner. Place either end of the ballot into the scanner. If you don't have any errors on the ballot, it will be scanned and deposited in the locked ballot container. The scanner will tabulate the votes. If there is a need for a re-count, the ballots will be safely stored for further counting.



The voted ballot goes into the scanner slot

If you have not filled in any of the ovals, the LCD display will alert you of the error and offer you the option to RETURN your ballot. You may choose to cast your ballot as is, or press the "RETURN" button to eject your ballot, return to the Privacy Booth and complete your ballot choices.

If you have over-voted (an over-vote means you voted for more candidates than the office allows), your votes for that office will not count, but the rest of your ballot will be counted. The LCD display will alert you of the error and offer you the option to RETURN your ballot. If you wish, press the "RETURN" button to eject your ballot and return to the Inspector Table to receive a new ballot

*** If you have any questions regarding your ballot, please ask a poll worker for clarification.**