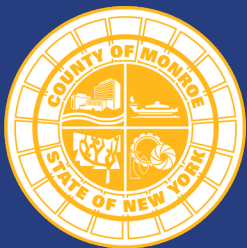


MONROE COUNTY
**AGRICULTURAL
AND FARMLAND
PROTECTION PLAN**



Virtual Workshop

March 27th 12:00-1:00p.m. Zoom



ADAM J. BELLO
COUNTY EXECUTIVE



Aerial View



ADAM J. BELLO
COUNTY EXECUTIVE



AERIAL BASEMAP
MONROE COUNTY, NY
AGRICULTURAL & FARMLAND
PROTECTION PLAN

- MONROE COUNTY
- VILLAGE BOUNDARY
- TOWN BOUNDARY
- PARK
- WATERBODY
- STREAM / RIVER
- STATE ROUTE
- THRUWAY / LIMITED ACCESS HIGHWAY

i MONROE COUNTY QUICK FACTS:

LAKE ONTARIO SHORELINE: 39.8 MILES
AREA: 426,298 ACRES OR 666.01 MILES²

TOPOGRAPHY:
MIN. ELEVATION: 236 FT
MAX. ELEVATION: 1,112 FT

POPULATION:
2022 ESTIMATE: 752,035 **↑ 1% INCREASE**
2021 ACTUAL: 744,344

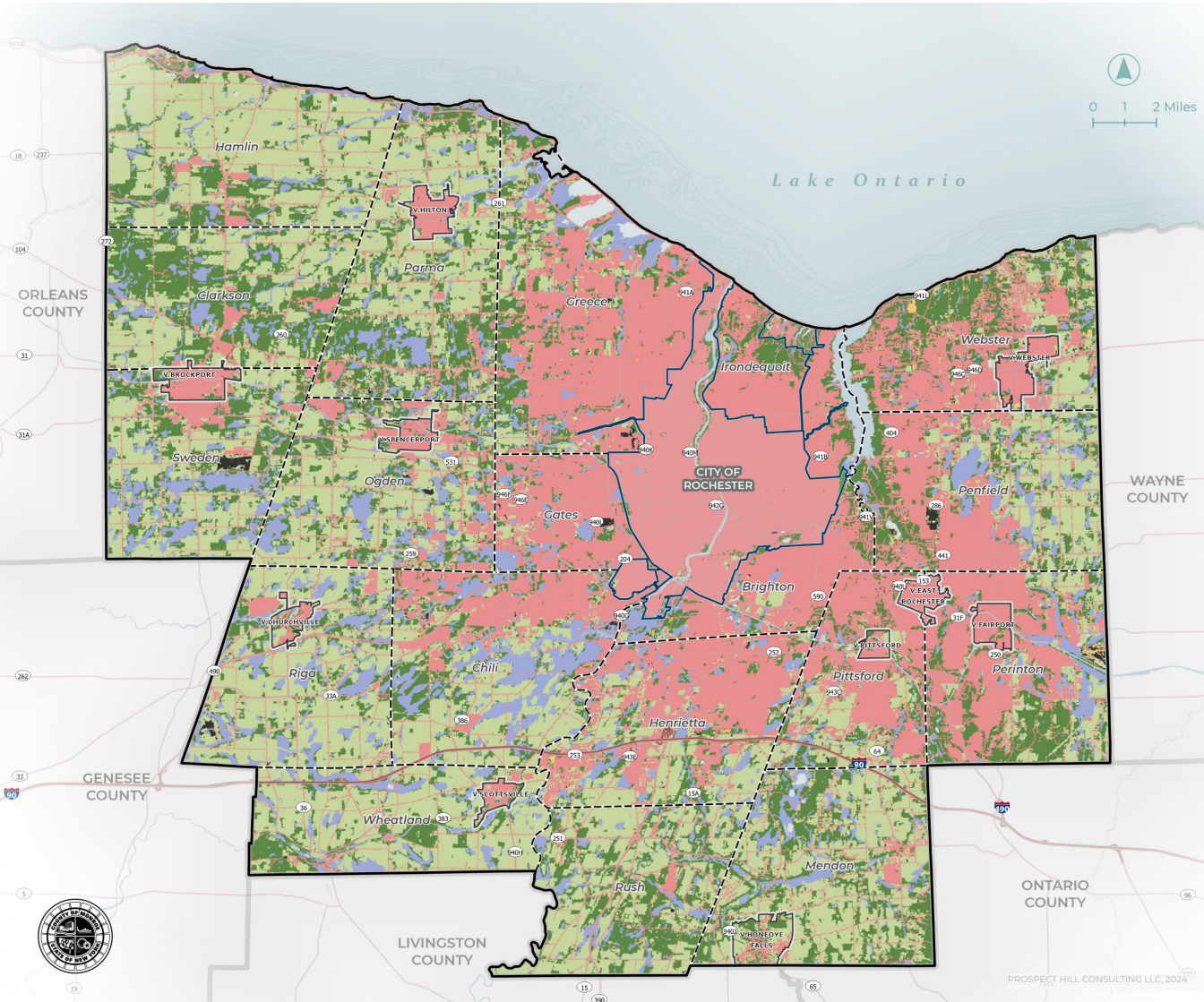
- Farmland visible in aerial view primarily on the County's periphery

NYS ITS GEOSPATIAL SERVICES, WESTCHESTER COUNTY GIS ; MONROE COUNTY 2023; ESRI 2024; NYS OFFICE OF INFORMATION TECHNOLOGY SERVICES GEOSPATIAL DATA SERVICES 2024; USGS NATIONAL HYDROGRAPHY DATASET PLUS HIGH RESOLUTION 2020; U.S. GREAT LAKES RESTORATION INITIATIVE (GLRI) 2010; NATIONAL GEOPHYSICAL DATA CENTER - BATHYMETRY OF LAKE ONTARIO, 1999; U.S. CENSUS BUREAU ACS 5-YEAR ESTIMATES 2018-2022.

Land Cover

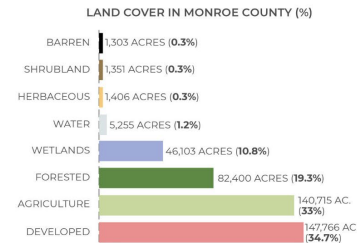


ADAM J. BELLO
COUNTY EXECUTIVE



LAND COVER MONROE COUNTY, NY AGRICULTURAL & FARMLAND PROTECTION PLAN

- BARREN
- AGRICULTURE
- DEVELOPED
- FOREST
- HERBACEOUS
- SHRUBLAND
- WATER
- WETLANDS



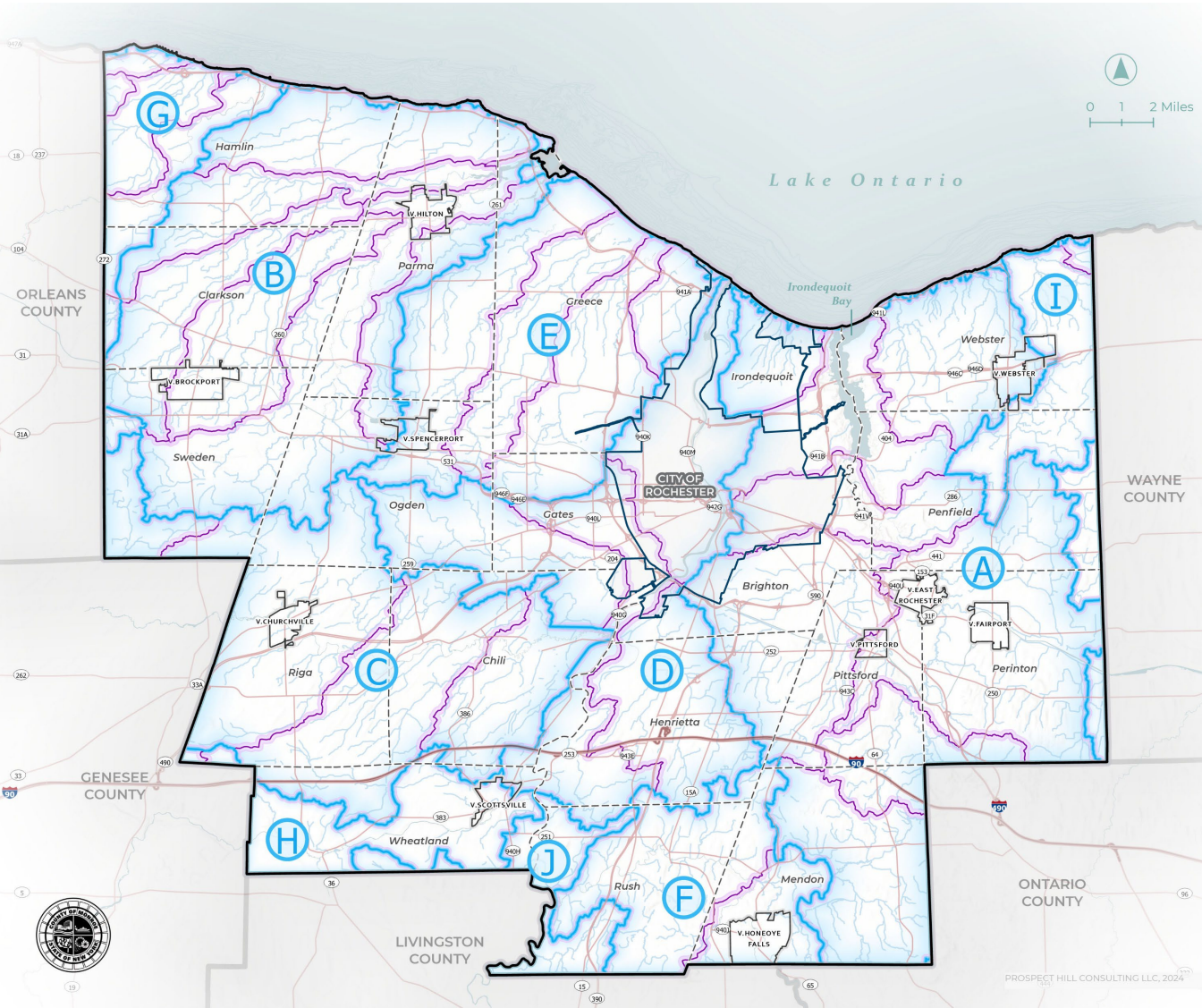
- ▭ MONROE COUNTY
- - - TOWN BOUNDARY
- ▭ VILLAGE BOUNDARY
- ▭ CITY BOUNDARY
- STATE ROUTE
- THRUWAY / LIMITED ACCESS HIGHWAY

- Agricultural lands are the second most prevalent type of land cover in the County, with only 7,051 fewer acres than developed land.
- Most of the agricultural land is found around the periphery of the County.

Water Resources



ADAM J. BELLO
COUNTY EXECUTIVE



STREAMS, WATERSHEDS & SUB-WATERSHEDS MONROE COUNTY, NY AGRICULTURAL & FARMLAND PROTECTION PLAN

- STREAM / RIVER
- WATERBODY
- WATERSHED BOUNDARY (HUC 10)
- SUB-WATERSHED BOUNDARY (HUC 12)

| ID | WATERSHED NAME (HUC 10) | AREA (ACRES) |
|----|--|--------------|
| A | IRONDEQUOIT CREEK-FRONTAL LAKE ONTARIO | 112,845 |
| B | SALMON CREEK-FRONTAL LAKE ONTARIO | 77,443 |
| C | BLACK CREEK | 56,500 |
| D | GENESEE RIVER | 55,923 |
| E | BLACK CREEK-FRONTAL LAKE ONTARIO | 45,159 |
| F | HONEYE CREEK | 23,312 |
| G | SANDY CREEK-FRONTAL LAKE ONTARIO | 14,450 |
| H | OATKA CREEK | 13,785 |
| I | FOURMILE CREEK-FRONTAL LAKE ONTARIO | 12,605 |
| J | BEARDS CREEK-GENESEE RIVER | 7,988 |

- MONROE COUNTY
- TOWN BOUNDARY
- VILLAGE BOUNDARY
- CITY BOUNDARY
- STATE ROUTE
- THRUWAY / LIMITED ACCESS HIGHWAY

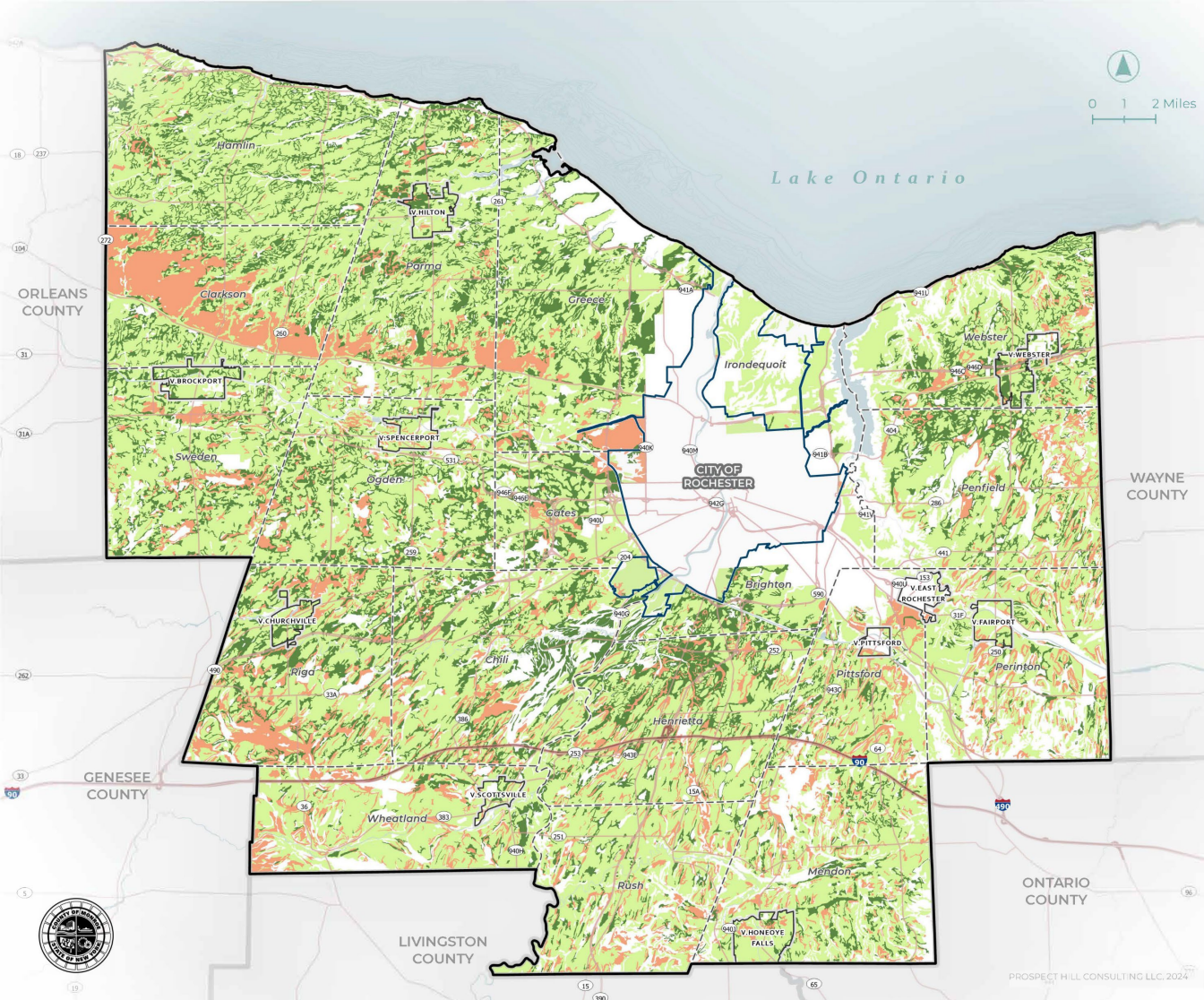
ESRI, NASA, NGA, USGS; MONROE COUNTY 2023; ESRI 2024; NYS OFFICE OF INFORMATION TECHNOLOGY SERVICES GEOSPATIAL DATA SERVICES 2024; USGS NATIONAL HYDROGRAPHY DATASET PLUS HIGH RESOLUTION 2020; U.S. GREAT LAKES RESTORATION INITIATIVE (GLRI) 2010; NATIONAL GEOPHYSICAL DATA CENTER - BATHYMETRY OF LAKE ONTARIO, 1999; CORNELL INSTITUTE FOR RESOURCE INFORMATION SCIENCES (CORNELL IRIS) AND NYS DEPARTMENT OF AGRICULTURE AND MARKETS 2017

- The quality of water resources are heavily influenced by agricultural operations due to runoff from agricultural activities, applicants, and waste.
- There are 10 distinct sub-watersheds in Monroe County that all drain into different bodies of water, but ultimately all drain into Lake Ontario.

Agricultural Soils (USDA)



ADAM J. BELLO
COUNTY EXECUTIVE



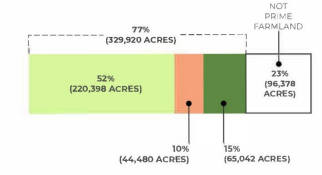
AGRICULTURAL SOIL SUITABILITY - PRIME FARMLANDS MONROE COUNTY, NY AGRICULTURAL & FARMLAND PROTECTION PLAN

AGRICULTURAL SOIL CLASSIFICATION (USDA)

- ALL AREAS ARE PRIME FARMLAND¹
- FARMLAND OF STATEWIDE IMPORTANCE
- PRIME FARMLAND IF DRAINED¹

¹ PRIME FARMLAND, AS DEFINED BY THE U.S. DEPARTMENT OF AGRICULTURE (USDA), IS LAND THAT HAS THE BEST COMBINATION OF PHYSICAL AND CHEMICAL CHARACTERISTICS FOR PRODUCING FOOD, FEED, FORAGE, FIBER, AND OILSEED CROPS AND IS AVAILABLE FOR THESE USES. IT COULD BE CULTIVATED LAND, PASTURELAND, FORESTLAND, OR OTHER LAND, BUT IT IS NOT URBAN OR BUILT-UP LAND OR WATER AREAS. THE SOIL QUALITY, GROWING SEASON, AND MOISTURE SUPPLY ARE THOSE NEEDED FOR THE SOIL TO ECONOMICALLY PRODUCE SUSTAINED HIGH YIELDS OF CROPS WHEN PROPER MANAGEMENT, INCLUDING WATER MANAGEMENT, AND ACCEPTABLE FARMING METHODS ARE APPLIED. (USDA, 2015)

AG. SOIL SUITABILITY SUMMARY IN COUNTY



- MONROE COUNTY
- TOWN BOUNDARY
- VILLAGE BOUNDARY
- CITY BOUNDARY
- STATE ROUTE
- THRUWAY / LIMITED ACCESS HIGHWAY

MONROE COUNTY 2023; ESRI 2024; NYS OFFICE OF INFORMATION TECHNOLOGY SERVICES GEOSPATIAL DATA SERVICES 2024; USGS NATIONAL HYDROGRAPHY DATASET PLUS HIGH RESOLUTION 2020; U.S. GREAT LAKES RESTORATION INITIATIVE (GLRI) 2010; NATIONAL GEOGRAPHIC DATA CENTER - BATHYMETRY OF LAKE ONTARIO, 1999; U.S. DEPARTMENT OF AGRICULTURE, NATURAL RESOURCES CONSERVATION SERVICE - SOIL SURVEY GEOGRAPHIC (SSURGO) DATABASE FOR MONROE COUNTY NY 2018; NYSERDA 2022 SOILS DATA FOR USE IN THE LARGE-SCALE RENEWABLES AND NYSUN PROGRAMS 2023

- Over half (52%) of all land area within Monroe County is considered to contain prime agricultural soils. 77% is considered suitable for farming.
- Much of the prime farmland has been developed.

Prime Farmland: Prime soils have the best physical and chemical properties for producing food, feed, forage, fiber, and oilseed crops, with high productivity and sustainability when properly managed.

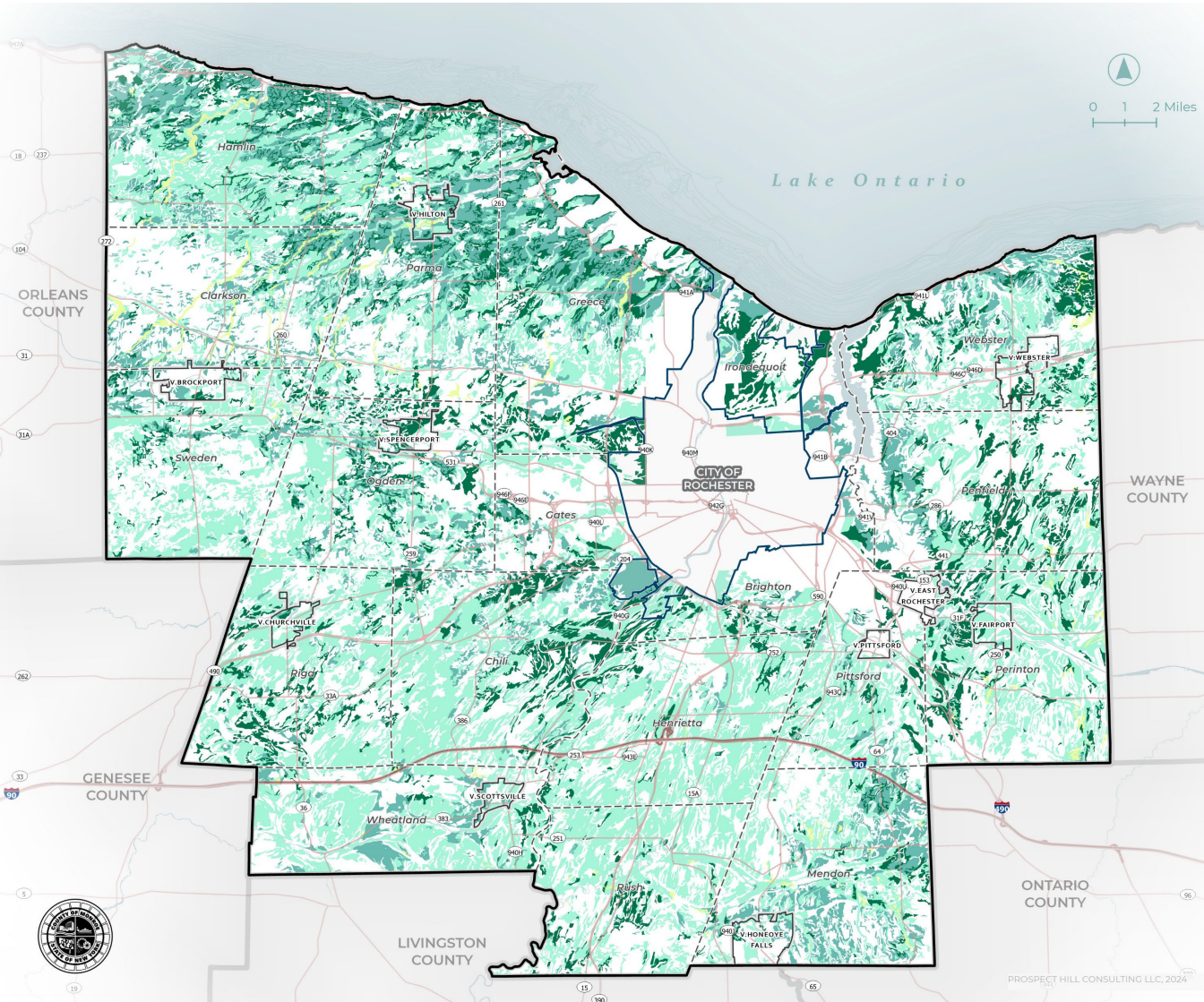
Prime Farmland if Drained: Soils that have the potential to be highly productive if they are artificially drained.

Farmland of Statewide Importance: These lands are identified by New York State as important for agricultural production but do not meet the criteria for prime farmland.

Agricultural Soils (MSG)



ADAM J. BELLO
COUNTY EXECUTIVE

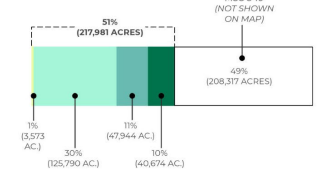


AGRICULTURAL SOIL SUITABILITY - MINERAL SOIL GROUPS MONROE COUNTY, NY
AGRICULTURAL & FARMLAND PROTECTION PLAN



¹ MSG 1-4 CLASSIFICATIONS ARE DEFINED AND USED BY THE NYS DEPARTMENT OF AGRICULTURE AND MARKETS TO CLASSIFY THE STATE'S AGRICULTURAL LANDS BASED UPON SOIL PRODUCTIVITY AND CAPABILITY. EACH COUNTY IN NEW YORK STATE HAS A LISTING OF ALL SOIL TYPES PRESENT IN THE COUNTY ASSOCIATED WITH A SPECIFIC MINERAL SOIL GROUP; MSG 1 THROUGH 10. (NYSERDA, 2015)

AG. SOIL SUITABILITY SUMMARY IN COUNTY



- MONROE COUNTY
- TOWN BOUNDARY
- VILLAGE BOUNDARY
- CITY BOUNDARY
- STATE ROUTE
- THRUWAY / LIMITED ACCESS HIGHWAY

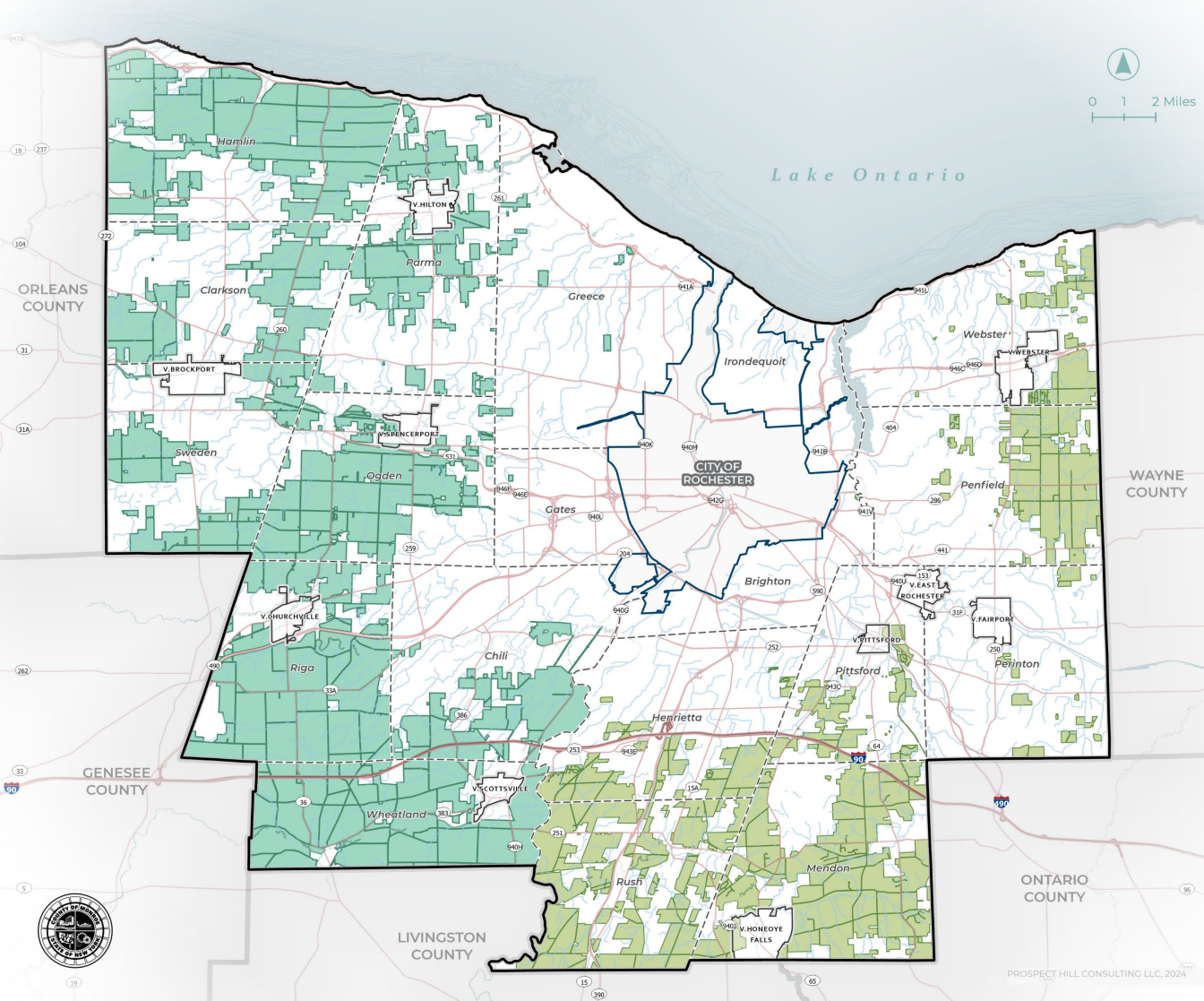
- Mineral Soil Groups (MSG) identify land that is suitable for farming. MSG 1-4 are considered the highest quality agricultural soils.
- MSG ratings indicate 51% of all land area in Monroe County is highly suitable for farmland (MSG 1-4). 26% less than USDA suitability determination.
- New York State uses MSG Ratings in determining Agricultural Use Assessment values.

MONROE COUNTY 2023; ESRI 2024; NYS OFFICE OF INFORMATION TECHNOLOGY SERVICES GEOSPATIAL DATA SERVICES 2024; USGS NATIONAL HYDROGRAPHY DATASET PLUS HIGH RESOLUTION 2010; U.S. GREAT LAKES RESTORATION INITIATIVE (GLRI) 2010; NATIONAL GEOPHYSICAL DATA CENTER - BATHYMETRY OF LAKE ONTARIO, 1999; U.S. DEPARTMENT OF AGRICULTURE, NATURAL RESOURCES CONSERVATION SERVICE - SOIL SURVEY GEOGRAPHIC (SSURGO) DATABASE FOR MONROE COUNTY NY 2018; NYSERDA 2022 SOILS DATA FOR USE IN THE LARGE-SCALE RENEWABLES AND NY-SUN PROGRAMS 2023

Agricultural Districts



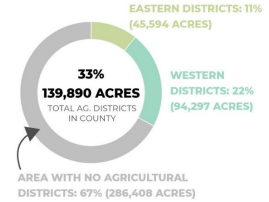
ADAM J. BELLO
COUNTY EXECUTIVE



**AGRICULTURAL DISTRICTS
MONROE COUNTY, NY**
AGRICULTURAL & FARMLAND
PROTECTION PLAN

- AGRICULTURAL DISTRICT
- EASTERN:** MUNICIPALITIES OF HENRIETTA, MENDON, PENFIELD, PERINTON, PITTSFORD, RUSH, WEBSTER
 - WESTERN:** MUNICIPALITIES OF CHILI, CLARKSON, GATES, GREECE, HAMLIN, OGDEN, PARMA, RIGA, SWEDEN, WHEATLAND

AGRICULTURAL DISTRICTS IN COUNTY (%)



- MONROE COUNTY
- TOWN BOUNDARY
- VILLAGE BOUNDARY
- CITY BOUNDARY
- WATERBODY
- STREAM / RIVER
- STATE ROUTE
- THRUWAY / LIMITED ACCESS HIGHWAY

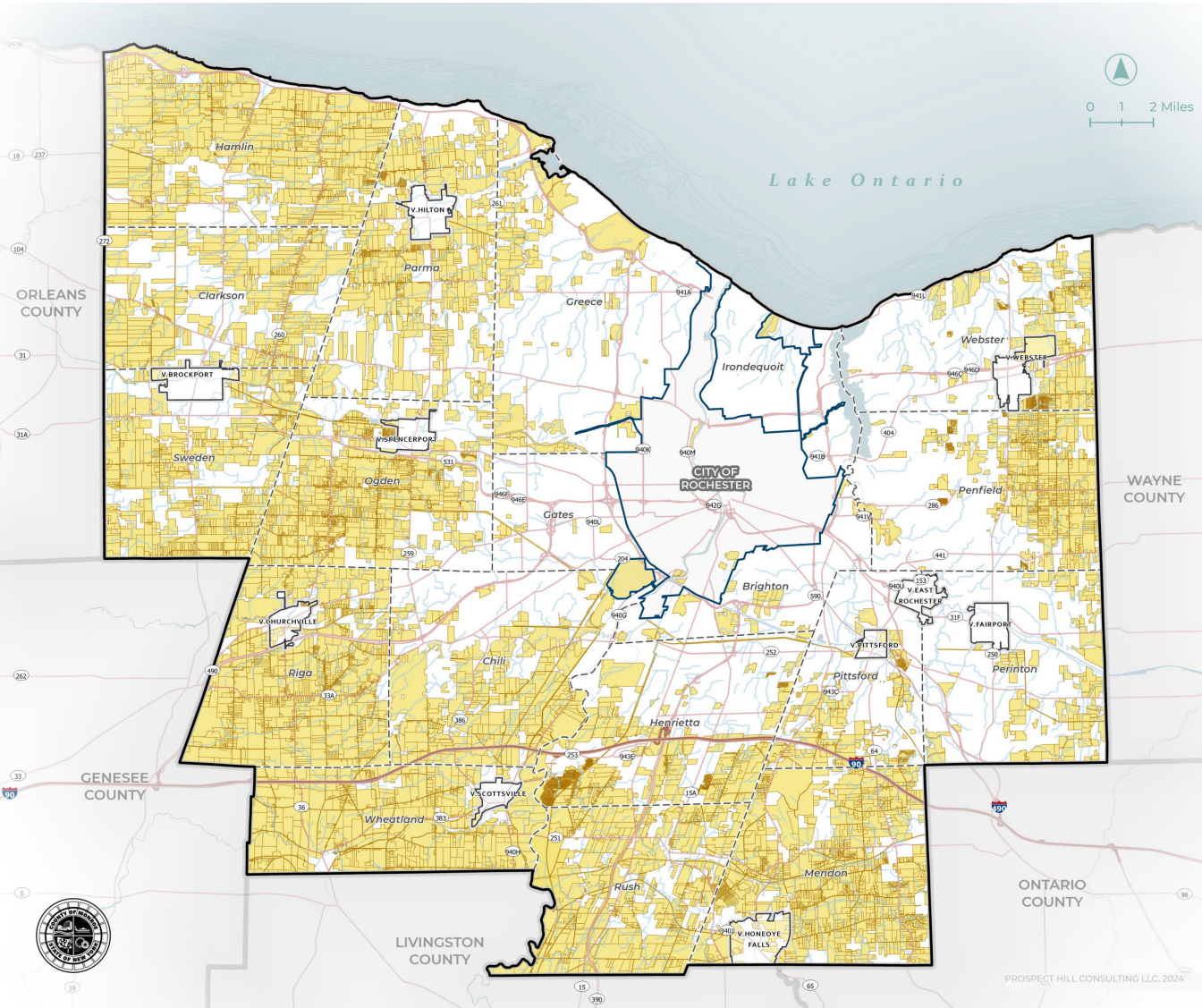
MONROE COUNTY 2023; ESRI 2024; NYS OFFICE OF INFORMATION TECHNOLOGY SERVICES GEOSPATIAL DATA SERVICES 2024; USGS NATIONAL HYDROGRAPHY DATASET PLUS HIGH RESOLUTION 2020; U.S. GREAT LAKES RESTORATION INITIATIVE (GLRI) 2010; NATIONAL GEOPHYSICAL DATA CENTER - BATHYMETRY OF LAKE ONTARIO, 1999; CORNELL INSTITUTE FOR RESOURCE INFORMATION SCIENCES (CORNELL IRES) AND NYS DEPARTMENT OF AGRICULTURE AND MARKETS 2017

- Agricultural districts in the County are divided into two primary districts, East and West.
- Monroe County will combine them into one District during the upcoming 8-year review.
- Land in Agricultural Districts cover 33% of all landcover in the County
- Agricultural District Benefits:
 1. Taxed on ag. production instead of fair market value
 2. Free from local regulations
 3. Discourages private nuisance lawsuits
 4. Limits impacts from public projects
 5. Limits power of special improvement districts.

Farm Parcels



ADAM J. BELLO
COUNTY EXECUTIVE



AGRICULTURAL PARCELS MONROE COUNTY, NY AGRICULTURAL & FARMLAND PROTECTION PLAN

- AGRICULTURAL PARCELS
ALL AGRICULTURAL PARCELS: 13,940
- PARCELS CODED AS AGRICULTURAL OR RESIDENTIAL WITH AG PROPERTY CLASSIFICATIONS: 1,788
- PARCELS WITHIN AGRICULTURAL DISTRICTS: 12,514
- PARCELS WITH 7+ ACRES OR MORE OF CROPLAND/PASTURE LAND COVER (LULC): 3,523

- MONROE COUNTY
- TOWN BOUNDARY
- VILLAGE BOUNDARY
- CITY BOUNDARY
- WATERBODY
- STREAM / RIVER
- STATE ROUTE
- THRUWAY / LIMITED ACCESS HIGHWAY

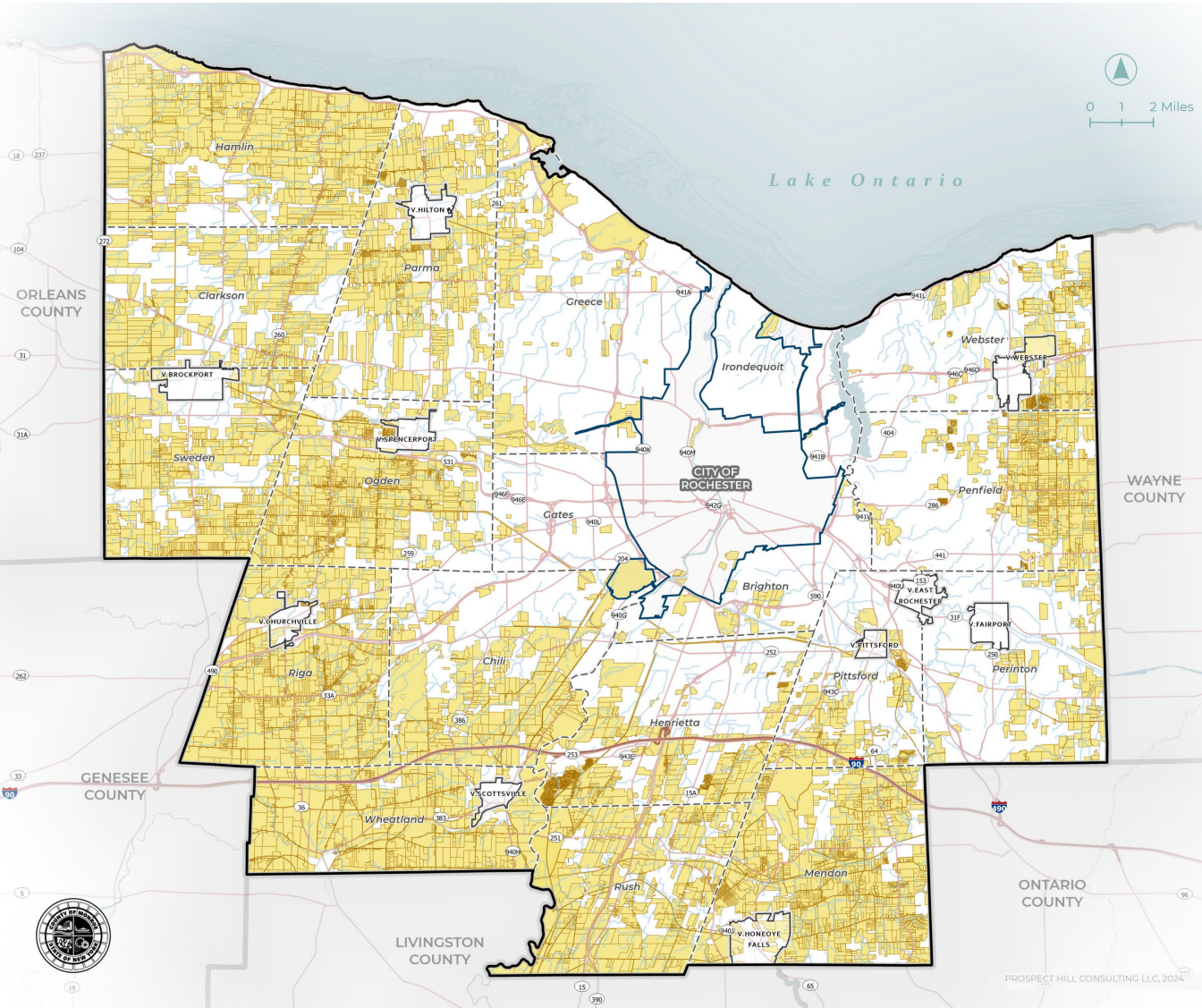
- Agricultural parcels shown on this map include:
 - Parcels classified Agricultural by Assessors (100s)
 - Parcels within Monroe County Agricultural Districts
 - Other parcels with 7+ acres of cropland or pasture land cover, based on satellite imagery of land cover

MONROE COUNTY 2023; ESRI 2024; NYS OFFICE OF INFORMATION TECHNOLOGY SERVICES GEOSPATIAL DATA SERVICES 2024; USGS NATIONAL HYDROGRAPHY DATASET PLUS HIGH RESOLUTION 2025; U.S. GREAT LAKES RESTORATION INITIATIVE (GLRI) 2010; NATIONAL GEOPHYSICAL DATA CENTER - BATHYMETRY OF LAKE ONTARIO, 1999; CORNELL INSTITUTE FOR RESOURCE INFORMATION SCIENCES (CORNELL IRISS) AND NYS DEPARTMENT OF AGRICULTURE AND MARKETS 2017

Farm Parcels



ADAM J. BELLO
COUNTY EXECUTIVE



AGRICULTURAL PARCELS MONROE COUNTY, NY AGRICULTURAL & FARMLAND PROTECTION PLAN

- AGRICULTURAL PARCELS**
 ALL AGRICULTURAL PARCELS: 13,940
- PARCELS CODED AS AGRICULTURAL OR RESIDENTIAL WITH AG PROPERTY CLASSIFICATIONS: 1,788
- PARCELS WITHIN AGRICULTURAL DISTRICTS: 12,514
- PARCELS WITH 7+ ACRES OR MORE OF CROPLAND/PASTURE LAND COVER (LULC): 3,523

- MONROE COUNTY
- TOWN BOUNDARY
- VILLAGE BOUNDARY
- CITY BOUNDARY
- WATERBODY
- STREAM / RIVER
- STATE ROUTE
- THRUWAY / LIMITED ACCESS HIGHWAY

- Agricultural parcels shown on this map include:
 - Parcels classified Agricultural by Assessors (100s)
 - Parcels within Monroe County Agricultural Districts
 - Other parcels with 7+ acres of cropland or pasture land cover, based on satellite imagery of land cover

MONROE COUNTY 2023; ESRI 2024; NYS OFFICE OF INFORMATION TECHNOLOGY SERVICES GEOSPATIAL DATA SERVICES 2024; USGS NATIONAL HYDROGRAPHY DATASET PLUS HIGH RESOLUTION 2025; U.S. GREAT LAKES RESTORATION INITIATIVE (GLRI) 2010; NATIONAL GEOPHYSICAL DATA CENTER - BATHYMETRY OF LAKE ONTARIO, 1999; CORNELL INSTITUTE FOR RESOURCE INFORMATION SCIENCES (CORNELL IRI) AND NYS DEPARTMENT OF AGRICULTURE AND MARKETS 2017

Economy



ADAM J. BELLO
COUNTY EXECUTIVE

Monroe County 2022 Annual Sales by Range

| Annual Sales | Number of Farms in Sales Range | Percent of Total County Farms | Sales | Percent of Total County Sales |
|-----------------------------|--------------------------------|-------------------------------|----------------------|-------------------------------|
| Less than \$1,000 - \$9,999 | 268 | 51% | \$621,000 | 0.61% |
| \$10,000 - \$49,999 | 136 | 26% | \$2,624,000 | 2.60% |
| \$50,000 - \$99,999 | 26 | 5% | \$1,882,000 | 1.86% |
| \$100,000 - \$249,000 | 26 | 5% | \$3,869,000 | 3.83% |
| \$250,000 - \$499,999 | 29 | 6% | \$10,664,000 | 11% |
| \$500,000 + | 38 | 7% | \$81,422,000 | 81% |
| Total | 523 | 100% | \$101,082,000 | 100.00% |

Source: 2022 USDA Census of Agriculture

- Sales are concentrated among the top grossing producers in the county. Only **7%** of Monroe County farms sell \$500,000 or more per year, but these farms account for **81%** of total County sales value.
- This trend has increased since 2017 when **8%** of farms accounted for **75%** of County sales value.



Economy



ADAM J. BELLO
COUNTY EXECUTIVE

| Item | 2022 Sales |
|--|-----------------------|
| Crops, including nursery and greenhouse crops | \$ 91,147,000 |
| Grains, oilseeds, dry beans, and dry peas | \$ 37,325,000 |
| Corn | \$ 20,595,000 |
| Wheat | \$ 4,430,000 |
| Soybeans | \$ 11,070,000 |
| Vegetables, melons, potatoes, and sweet potatoes | \$ 28,607,000 |
| Fruits, tree nuts, and berries | \$ 9,375,000 |
| Fruits and tree nuts | \$ 7,786,000 |
| Berries | \$ 1,589,000 |
| Nursery, greenhouse, floriculture, and sod | \$ 12,117,000 |
| Cultivated Christmas Trees and short rotation woody crops | \$ 930,000 |
| Cultivated Christmas Trees | \$ 930,000 |
| Other crops and hay | \$ 2,793,000 |
| Livestock, poultry, and their products | \$ 9,935,000 |
| Poultry and eggs | \$ 157,000 |
| Cattle and calves | \$ 963,000 |
| Milk from cows | \$ 7,913,000 |
| Hogs and pigs | \$ 38,000 |
| Sheep, goats, wool, mohair, and milk | \$ 140,000 |
| Horses, ponies, mules, burros, and donkey | \$ 506,000 |
| Other animals and other animal products | \$ 219,000 |
| Total | \$ 101,082,000 |

Grains, Vegetables, and Corn were the top three agricultural products by dollar value sold in Monroe County in 2022

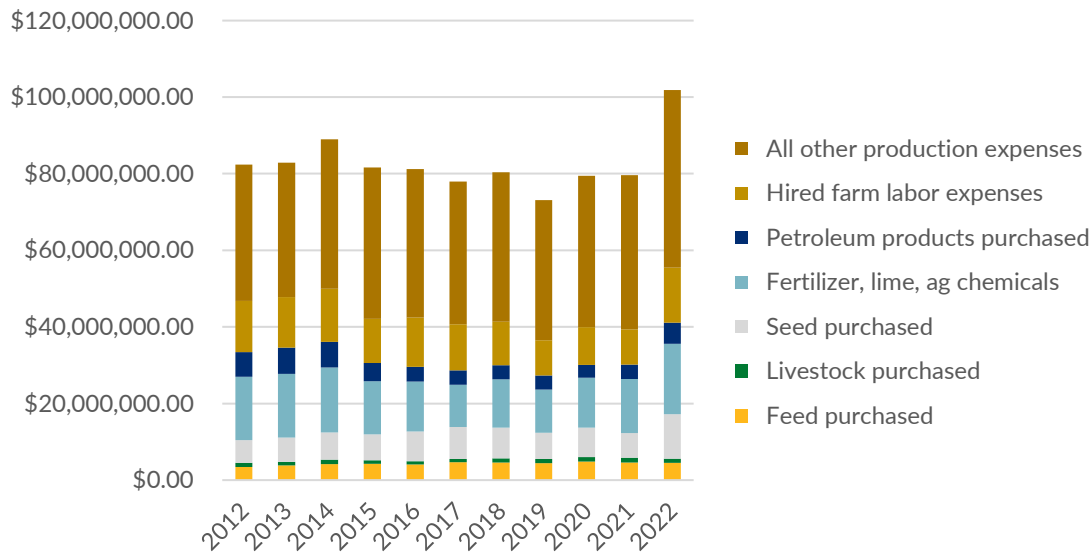
- Poultry (+336%), Berries(+150%), and Christmas Tree (+115%) sales grew by the highest percent change from 2017 to 2022; Other animals and other animal products (-48%), Cattle and Calves (-56%), and Maple Syrup (-100%) decreased by the highest percent change.

Economy



ADAM J. BELLO
COUNTY EXECUTIVE

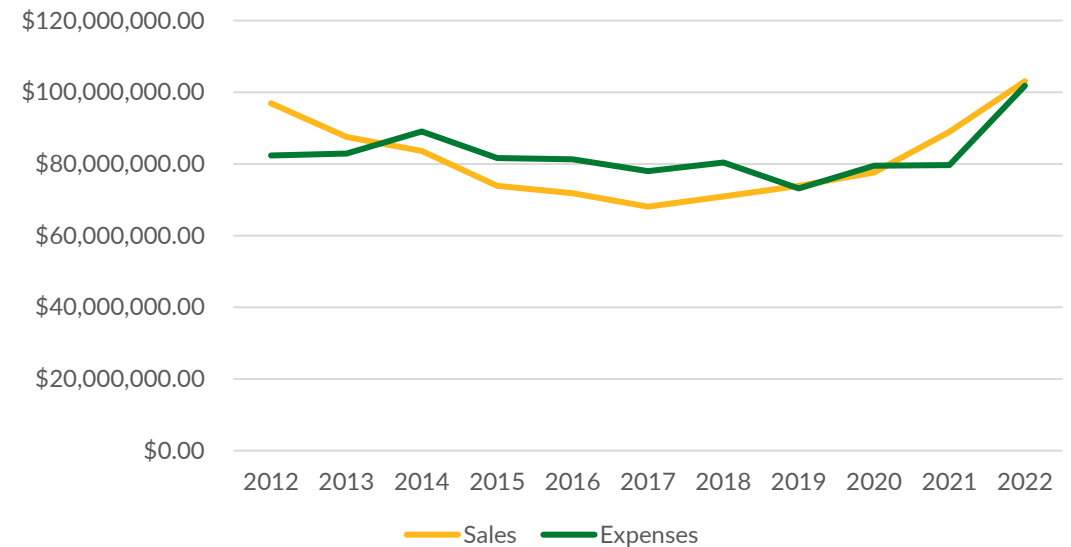
Farm Expenses



Source: BEA CAINC45 Data

Costs have generally risen since 2012. The majority of farm expenses fall into the category of “All other production expenses,” a category which includes repair and operation of machinery; depreciation, interest, rent, and taxes; and other miscellaneous expenses.

Farm Sales v. Expenses: 2012 - 2022



Source: BEA CAINC45 Data

While Monroe County farms have enjoyed increased sales since 2012, those gains have been offset by commensurate increases in expenses.

Strengths



ADAM J. BELLO
COUNTY EXECUTIVE

- What do you like that is happening already?
 - What resources do you use now that are helpful?
 - What is unique about this area that helps support farming?
- Favorable climate/ fresh water – makes farmland especially valuable compared to other regions
 - High quality soils – vitally important resource
 - Young and new farmers interested in farming
 - Agency resources – Cornell Cooperation Extension; Soil & Water Conservation District; MCC
 - BOCES – Springdale Farm for youth education
 - MCC, GCC and FLCC – Ag programs – include specialties and connect with educational opportunities Statewide
 - New farmers – some buying smaller sized farms and keeping rural land in ag production

Weaknesses



ADAM J. BELLO
COUNTY EXECUTIVE

- What are current challenges or obstacles to your farm operation?

- Fragmented land use authority – municipalities
- Local zoning laws – some not sufficiently protective of farmland/ agriculture
- Aging farmers/ children not interested in farming – no one to take over farm
- CCE Monroe County – less oriented to farmers than CCE's in more rural counties – (focused more on landscaping)
- Lack of awareness of educational and other resources

Threats



ADAM J. BELLO
COUNTY EXECUTIVE

- What is on the horizon that might affect your farm operation or land?

- Conversion of farmland to housing
- Climate change migration – increasing demand for new housing
- Aging farmers – leaving business – need for transition planning / connect sellers with people who want to farm
- Farmland – high value and farmers often rely on selling land to fund retirement

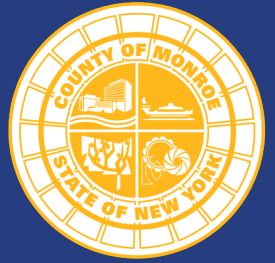
Opportunities



ADAM J. BELLO
COUNTY EXECUTIVE

- What is on the horizon that could benefit your farm or farmland?

- Direct new development away from farm areas
- Support young and new farmers – connect with farmers/ transition planning
- Educate local government officials – re zoning – Model regulations would be helpful
- Education in schools
- Engage residents – Potential to expand small-scale farming including chickens (urban agriculture) in City, Villages and suburban areas – need to build public support/ educate on impacts & benefits
- Increase public awareness about farming/ existing protections through Ag District Program
- Conservation easement/ Purchase of development rights



ADAM J. BELLO
COUNTY EXECUTIVE

Thank you!

Contact:

Barbara Johnston, *Project Manager*
LaBella Associates 585-295-6636

Patrick Gooch, *Senior Associate Planner*
Monroe County 585-753-2032



MonroeCountyAgPlan.com