



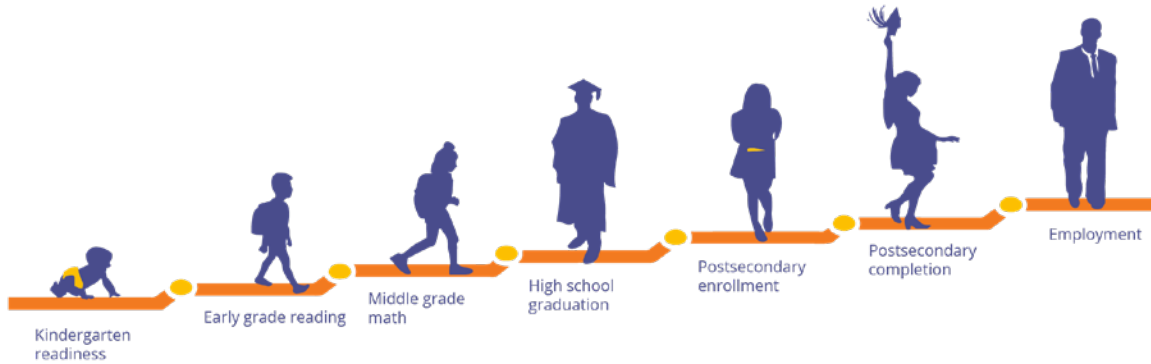
EQUITY & EDUCATION: THE NEXT HORIZON

# REPORT CARD

2020

# Focused on Children's Success. **TOGETHER.**

ROC the Future is an alliance of over 60 leading Rochester-area institutions and community partners. We promote the alignment of community resources and initiatives to improve the academic achievement of Rochester's children.



## Table of Contents

Supporting Student Achievement.....	4
Strengthening Relationships .....	11
Transforming School Systems.....	15
Transforming Community Systems.....	21

ROC the Future is not one organization, office, or staff. ROC the Future is all of us working together. **ROC the Future is you.**

### Collective Impact

ROC the Future amplifies the efforts of the community. We have an impact by:

- Sharing a common agenda
- Measuring common outcomes
- Using evidence-based practices
- Staying in continuous communication
- Mutually reinforcing one another's efforts
- Mobilizing resources
- Increasing equity

# Children Learn Everywhere

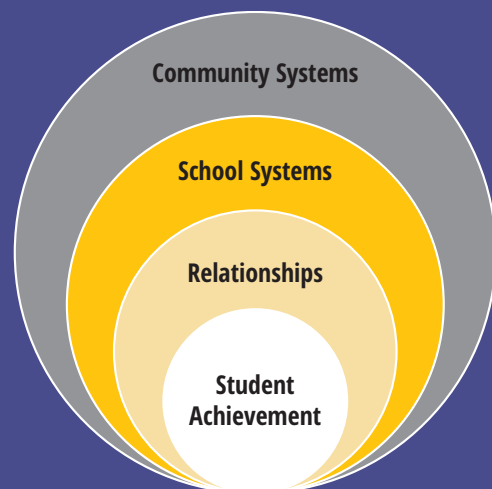
**Children learn everywhere.** They learn **on their own**...As they splash in water puddles, watch insects, and observe people around them. They learn from **other children**...As they negotiate turns, make up rules, and imitate one another. They learn from their **families**...They measure while cooking, problem solve while doing chores, and grow gardens. They learn in **school**... fundamental reading skills, math and science, history, art and music, and critical thinking they can bring to every subject. They learn in the **community**...on the baseball field, at the R-center, in the library, during dance class.

**Teenagers learn everywhere, too.** They learn **on their own**...As they read books and search the internet, stream documentaries, and listen to music. They learn from **their peers**...As they explore their city, interact online, and work on projects. They learn from their **families**...the physics of safely changing a car tire, how their family experienced history, and values to guide them. They learn in **school**...civics, technology, how to analyze and synthesize information. They learn from the **community**, too...with their neighbor, mentor, employer, coach, and barber.

The fact that learning happens both inside and outside of school was magnified last year by the pandemic. Plans and strategies had to be dropped and new systems created quickly. Rochester responded in many amazing ways. The need for agile systems continues this year as our schools combine in-person and remote learning. The short-term and long-term effects are not yet known. What we do know is we must be ready to step up in new ways to support our children and families as they recover from lost learning and work through social and emotional impacts.

This year's Report Card reflects the fact that education is a community effort by measuring our work to improve education outcomes at multiple levels.

ROC the Future recognizes **that changing systems benefits all children.** Therefore, in addition to data on student-level achievement, in this year's Report Card you will see more data on school and community systems and more examples of how we are working to change and create systems to support cradle to career outcomes.



In examining school and community systems, ROC the Future is also intentionally focusing on **race equity**. We recognize that racism is embedded in the structures, policies, and practices of our institutions and communities. Taking a systems-level approach will disrupt structural racism and build racial equity, ensuring that all children have the opportunity to thrive from cradle to career.



# SUPPORTING STUDENT ACHIEVEMENT

## GOALS

- ✓ 80% of All Four-Year-Olds Will Be Kindergarten Ready<sup>1</sup>
- ✓ Increase in the percentage of third-graders proficient on the NYS English Language Arts test each year until the district rate meets or exceeds the NYS rate<sup>2</sup>
- ✓ 80% of all high school seniors in Rochester will graduate with their 9<sup>th</sup> grade cohort

## Kindergarten Readiness 2018 - 2019<sup>3</sup>

**RCSD & Community Based Programs**

All Students	52%	↓
Girls	54%	↓
Boys	46%	↑
Asian	64%	↑
White	64%	↓
Native American	60%	—
African American	51%	↑
Hispanic/Latino	49%	—

*Arrows indicate changes from the previous school year.*

<sup>1</sup> As measured by the COR Advantage  
<sup>2</sup> NY State Department of Education Assessment

<sup>3</sup> Children's Institute

## Third Grade ELA Proficiency 2018 - 2019<sup>4</sup>

	<b>RCSD</b>	<b>Lowest School</b>	<b>Highest School</b>
All Students (NYS = 52%)	18% ↑	3%	48%
Girls	21% ↑	0%	48%
Boys	16% ↑	3%	45%
White	34% ↑	17%	78%
Asian	23% —	18%	43%
Black/African American	18% ↓	3%	45%
Hispanic/Latino	14% ↓	0%	42%
General Education	22% ↑	4%	57%
Students with Disabilities	3% ↓	0%	25%
Non-English Language Learners	21% ↑	7%	55%
English Language Learners	5% ↓	0%	33%
Non-Economically Disadvantaged	40% ↑	30%	83%
Economically Disadvantaged	16% ↑	8%	42%

Arrows indicate changes from the previous school year.



## High School Graduation 2018 - 2019<sup>5</sup>

	<b>RCSD</b>	<b>Lowest School</b>	<b>Highest School</b>
All Students (NYS = 83%)	63% ↑	30%	95%
Girls	69% ↑	34%	96%
Boys	57% ↑	26%	93%
Asian	76% ↑	71%	90%
White	64% ↓	46%	95%
Black/African American	63% ↑	25%	94%
Hispanic/Latino	63% ↑	36%	98%
General Education	67% ↑	28%	95%
Students with Disabilities	47% ↑	33%	100%
Non-English Language Learners	21% ↑	31%	91%
English Language Learners	43% ↑	24%	88%
Non-Economically Disadvantaged	81% ↑	45%	100%
Economically Disadvantaged	60% ↑	29%	93%

Arrows indicate changes from the previous school year.

<sup>4</sup>NYS Education Department

<sup>5</sup>NYS Education Department



## FAFSA Completion<sup>6</sup>

### RCSD and Charter Schools

By March 2019	34%	↑
By June 2019	42%	↑
By March 2020	29%	↓
By June 2020	35%	↓

*Arrows indicate changes from the previous school year.*

---

<sup>6</sup> Rochester Education Foundation; Note: FAFSA events in 2020 were severely curtailed by pandemic restrictions

As the data on the preceding pages show, there is wide variability in academic outcomes. ROC the Future is diving into the data and will be working with our school partners and the community to replicate successes across the city. For children to thrive from cradle to career, they must also be supported by their schools and community. This requires strategies that are universal, integrated, customized, family-centered, and accountable. Highlighted here are three strategies ROC the Future is using to improve student achievement.



## Get Ready to GROW

Learning begins long before a child enters school. Making sure our children are on track requires a coordinated network of people who can help with whatever challenges a child might be facing, including movement, communication, vision, hearing, dental, and social-emotional development. Through the 'Get Ready to GROW' initiative, managed by Children's Institute with community partners, free screenings are provided to children at childcare centers, pre-K programs, schools, and medical offices, including in rural and hard-to-serve locations, leveraging a new mobile screening vehicle ('The GROW Bus').



### This year GROW took a giant leap forward:

- ✓ \$1.5 million federal grant awarded to All Kids Thrive
- ✓ Expanded screenings to include children 12 months – 5 years
- ✓ Developed virtual screening approaches to be able to provide remote GROW checks
- ✓ Completed screenings with 1,526 children, representing a 154% increase since 2016

### Partners

Accountable Health Partners • Action for a Better Community • Children's Institute • Early Childhood Development Initiative • Help Me Grow • Hillside Family of Agencies • Ibero-American Action League • Lift Off WNY • Rochester Regional Health • UR Medicine • URM Eastman Institute for Oral Health

### Funders and In-Kind Contributors

Anthony Jordan Health Center • City of Rochester • Excellus • Greater Rochester Health Foundation • Rochester's Child • United Way of Greater Rochester • Finger Lakes Performing Provider System • MVP • Nazareth College • St. John Fisher College • University of Rochester School of Medicine & Dentistry • US Department of Health and Human Services



## Supporting Early Grade Literacy

The research is clear. Shared book reading promotes language, literacy, and cognitive skills from infancy through the early grades. Not surprisingly, the number of books in a child's home is associated with more adult-child shared reading and with higher language skills.

To support reading at home, ROC the Future led a home library project. Through a community book drive with Barnes and Noble bookstores, over 6,000 books plus bookshelves were distributed to students in grades K – 3 at Schools 19 and 39. Additionally, teachers in those schools and in School 5 had access to the myOn digital library that students could use both in school and at home as well as the Ready Rosie mobile app to help parents engage their children in learning at home.

### Partners

Andrew J. Towson School 39 • Dr. Charles T. Lunsford School 19 • John Williams School 5 • Greater Rochester Summer Learning Association • Hope Initiatives • Rochester City School District • Rochester Public Library

### Funders and In-Kind Contributors

Barnes and Noble • ESL Charitable Foundation • Konar Foundation • Strive Together

#### Newborn - 1 Year



- Point at things and name them (dog, cat, house, car)
- Talk back and forth with your baby
- Play games with them while you are reading

#### 1 Year - 2 Years



- Smile and answer your child's questions
- Encourage them to point at objects and name them
- Have them help turn the pages

#### 2 Years - 3 Years



- Ask them questions about the book
- Talk about the pictures and what the words mean
- Let them pick out the book they want to read
- Reward them and set goals for reading

#### 3 Years - 4 Years



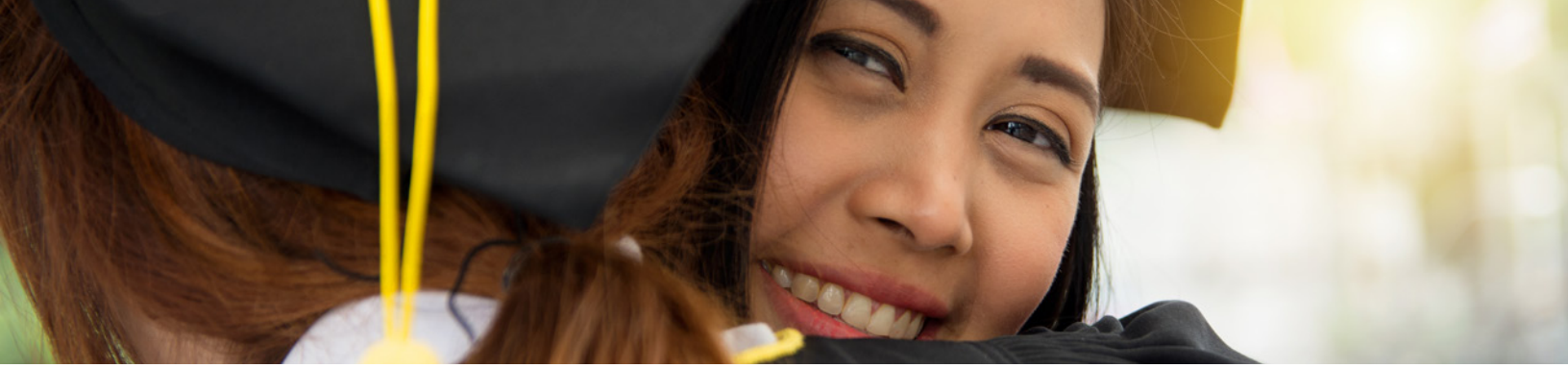
- Point out letters and numbers
- Look at pictures and make-up stories about them
- Talk about the different characters
- Ask them their take on the story

#### 4 Years - 5 Years



- Have your child tell the story
- Encourage writing and drawing
- Ask them the meaning of the story
- Have a conversation about what the words mean





## Supporting High School Graduation

At the request of RCSD, ROC the Future began last year by supporting the creation of an advisory group program at Wilson Commencement and Edison Technology High Schools. This type of program has been found to increase school attendance, foster positive relationships among peers and with adults, and increase students staying on track with credits for graduation. ROC the Future provided research and continuous improvement support to the schools.

However, with changes in RCSD administration the advisory program was no longer a district-wide priority. This presented ROC the Future with the opportunity to assess its role in light of local data, research, and partners' spheres of influence. The High School Graduation Outcomes Team is now exploring ways to address community and system factors that can impact graduation rates.

With support and training from Strive Together, leaders of the team are exploring strategies that might be used to address factors such as:

- ✓ Neighborhood environment
- ✓ Out of school programs
- ✓ Youth employment
- ✓ Mentoring programs
- ✓ Career and technical education
- ✓ School attendance

### Partners

Center for Governmental Research • ESL  
Charitable Foundation • Hillside Work-Scholarship  
• Metro Council for Teen Potential • Monroe  
Community College • Monroe One BOCES •  
Rochester City School District • Rochester Works! •  
The Children's Agenda



## College Access

A significant barrier to enrolling in post-secondary training and education programs is affordability. The Rochester College Access Network continues to support students and their families in completing the Free Application for Federal Student aid (FAFSA) and decoding financial aid offers so they can access federal, state, and institution grants, work-study, and loans. They also support students in exploring post-secondary options so they can choose the kind of education and setting that fits their career goals.

### Partners

Bryant and Stratton College • Hillside Work-Scholarship Connection • Horizons-Cognitive Marketing • JJ College Admission Advising • Monroe Community College • Monroe Council for Teen Potential • National Council of Jewish Women • Nazareth College • Rochester Area Community Foundation • Rochester City School District • Rochester Education Foundation • Rochester Institute of Technology • St. John Fisher College • SUNY Brockport and REOC • SUNY Geneseo • United Way of Greater Rochester • University of Rochester • Urban League of Rochester • Young Women's College Prep

### FAFSA Fest



- These events at schools and community sites guide students and families through each step of completing the FAFSA form

### Rochester Goes to College



- College tours give Rochester students a chance to visit college campuses, talk with college students, and meet with admissions representatives

### College Connect



- Panels of current college students meet with high school students in comfortable, informal settings to offer advice and encouragement

### Decoding Financial Aid Letters



- These workshops help students and families understand the offers they receive so they can make informed choices about what options are best for them





# STRENGTHENING RELATIONSHIPS



## RCSD & Community Based Programs

Average (out of 4.0)

Teachers understand families' culture, context and goals:	3.4	↑
Families and teachers collaborate with one another:	3.4	↑
Teachers are responsive to families' needs and goals:	3.3	↑
Positive, two-way communication between families and teachers:	3.2	↑
Teachers show concern for families:	3.4	↑
Teachers are sensitive, honest, encouraging, accessible:	3.7	↑
Teachers understand the family and child:	3.8	—
Teachers value the child and family, are non-judgmental and non-discriminatory:	3.8	—

*Arrows indicate changes from the previous school year.*

<sup>7</sup> Children's Institute

**Pre-Kindergarten**

**RCS D**

**FAMILY - CHILD Engagement 2018 - 2019<sup>7</sup>**

From the perspective of families at the end of the year.

Read with child at least once a week:	96%
Read with child daily:	33%
Can talk with at least 1 person at school about concerns:	94%

**Youth**

**RCS D Students 13+ years old**

**SENSE OF SOCIAL SUPPORT 2019<sup>8</sup>**

My family gives me help and support when I need it:	83% ↑
In my family there are clear rules about what I can and cannot do:	85% ↑
I get a lot of encouragement at my school:	62% ↓
I feel like I matter to people in the community:	57% ↑

Arrows indicate changes from the previous school year.

**Interscholastic**

**RCS D Schools Grades 9 - 12**

**SPORTS PARTICIPATION 2015<sup>9</sup>**

Students Participating:	Lowest School = 3%	Highest School = 58%
-------------------------	--------------------	----------------------

## Who had the most positive impact on your education?

Chances are, what you remember is less about the information they taught you and more about the relationship you had with them. Relationships are also important for adults. Raising and teaching children is full of challenges. The more families have support – from one another and from systems – the better they can guide their children as they learn and grow. Those relationships can also be a lever for changing systems, making them more responsive to families' needs and priorities. Highlighted here are two of ROC the Future's new efforts to build relationships that support children's learning from cradle to career.

<sup>7</sup> Children's Institute

<sup>8</sup> Monroe County Department of Public Health

<sup>9</sup> US Department of Education

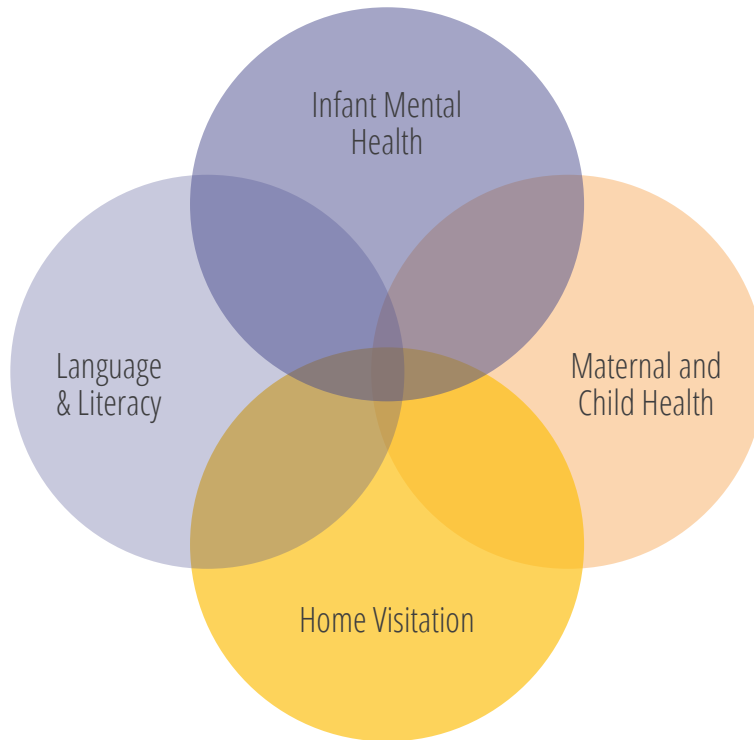


## Learning through Relationships

Many years of data from Rochester’s pre-K programs had shown us that children in pre-K make tremendous gains, sometimes experiencing as much as two years’ growth in a single school year. However, many still finish pre-K not fully ready for kindergarten, especially in the area of language and literacy.

Knowing this, ROC the Future’s School Readiness Outcomes Team has formed a **new strategy team** focused on **birth to 3 years**. This is a critical time when children acquire speech and language. Secure relationships are critical to that growth.

Strengthening support for children and families in these early years will mean more children start pre-K strong and can thrive from cradle to career.



### Partners

Children’s Institute • City of Rochester • Common Ground Health • Florence M. Muller Foundation and Emil Muller Foundation • Mt. Hope Family Center • Nazareth College • Nurse Family Partnership • Rochester City School District • Rochester Public Library • Rochester Regional Health • The Children’s Agenda • United Way of Greater Rochester • University of Rochester • University of Rochester Medical Center



## Empowering Parent Leadership

To achieve significant and lasting change, we need to engage families and the community in authentic ways. ROC the Future's Parent Engagement Collaborative Action Network (PECAN) went through substantial transformation this past year. It has **shifted** from being a group of parent-serving organizations to a space for parents and families to connect. It is also a way ROC the Future is bringing parent leadership to its Outcomes and Strategy Teams.

To advance this work, last year PECAN held four **community stakeholder sessions** to hear how they want to strengthen cradle to career outcomes. What grew out of those discussions were four recommendations that PECAN is now implementing:



PECAN has been holding monthly gatherings for parents and families. Each month focuses on a different topic, provides relevant information, and allows for discussion, mutual support, and planning collective actions. Within the **backbone staff**, ROC the Future added a second member to lead this work. This will allow us to expand our outreach to families, youth, educators, faith communities, and the Rochester community at large.

### Partners

City of Rochester Youth Voice, One Vision • Greater Rochester Parent Leadership Training Institute • National Parent Leadership Institute • Metro Council for Teen Potential • Monroe County Youth Advisory Council • RCSD Student Council • RCSD Office of Parent Engagement • Rochester-Monroe Anti-Poverty Initiative • Rochester Teacher Pipeline Project • Teen Empowerment

### Funders

ESL Charitable Foundation • Greater Rochester Health Foundation • Max and Marian Farash Charitable Foundation • Strive Together



# TRANSFORMING SCHOOL SYSTEMS



## RCSD & Community Based Programs

Average (out of 7.0)

Emotional support	6.6	—
Interactions	6.2	↑
Classroom organization	6.2	—
Program structure	6.1	↑
Language and literacy	5.7	↑
Space and furnishings	4.9	↑
Learning activities	4.9	↑
Personal care routines	4.7	↓
Instructional support	4.3	↓

Arrows indicate changes from the previous school year.

<sup>10</sup> Children's Institute

## Elementary

## RCSD SCHOOLS

### Enrollment, 2018 - 2019<sup>11</sup>

	Lowest School	Highest School
Economically Disadvantaged	64%	98%
Students with a Disability	15%	44%
English Language Learners	2%	46%

### Student Supports, 2015<sup>12</sup>

Students Chronically Absent	16%	55%
Teacher to Student Ratio (1:x)	9.0	14.6
% Teachers absent more than 10 days	9%	46%
Nurse to Student Ratio (1:x)	197	1,850
Counselor to Student Ratio (1:x)	391	705
Social Worker to Student Ratio (1:x)	264	1,167
Schools with No Social Worker		24%
Schools with No Counselor		67%
Schools with Health Centers <sup>13</sup>		3%
Schools Designated as Restorative Practices <sup>13</sup>		57%
Schools with Extended Learning Time		26%



<sup>11</sup> NYS Education Department  
<sup>12</sup> US Department of Education

<sup>13</sup> 2020, Rochester City School District  
 Greater Rochester Parent Leadership Training Institute





### Enrollment, 2018 - 2019<sup>11</sup>

	Lowest School	Highest School
Economically Disadvantaged	68%	95%
Students with a Disability	10%	29%
English Language Learners	3%	40%

### Student Supports, 2015<sup>12</sup>

Students Chronically Absent	13%	55%
Teacher to Student Ratio (1:x)	7.8	13.9
% Teachers absent more than 10 days	10%	44%
Nurse to Student Ratio (1:x)	527	1,458
Counselor to Student Ratio (1:x)	249	1,675
Social Worker to Student Ratio (1:x)	249	1,675
Schools with No Social Worker		8%
Schools with Health Centers <sup>13</sup>		54%
Schools Designated as Restorative Practices <sup>13</sup>		69%

### College Readiness, 2015<sup>12</sup>

Schools with Students Enrolled in Chemistry	100%
Schools with Students Enrolled in Physics	58%
Schools with Students Enrolled in Calculus	25%

As the data on these pages show, there is wide variability in the resources in Rochester's schools. ROC the Future is delving into the data and will be working with our school and community partners to ensure all students have access to support. That work will have to address two crises our community faced last year – RCSD's fiscal stress and the impact of remote learning.

<sup>11</sup> NYS Education Department  
<sup>12</sup> US Department of Education

<sup>13</sup> 2020, Rochester City School District  
 Greater Rochester Parent Leadership Training Institute



## Advocating for Equity

Last year RCSD had to make painful cuts to programs and services while maintaining the best possible academic and social-emotional supports for students. To help community members understand the budget and effectively advocate for the priorities they thought were important, ROC the Future co-hosted a budget teach-in with The Children's Agenda.

Participants included residents with and without school-age children, representatives of community-based organizations, community organizers, and higher education professionals. They learned about and provided feedback on how school budgeting works, how the budget crisis happened, and specific areas of concern in the budget.

Additionally, ROC the Future has issued a statement on race equity in education and also endorsed the Black Agenda Group's statement on Racism as a Public Health Crisis. These statements reflect our values as a collective. They will be used to guide strategic priorities and initiatives.

## Partners

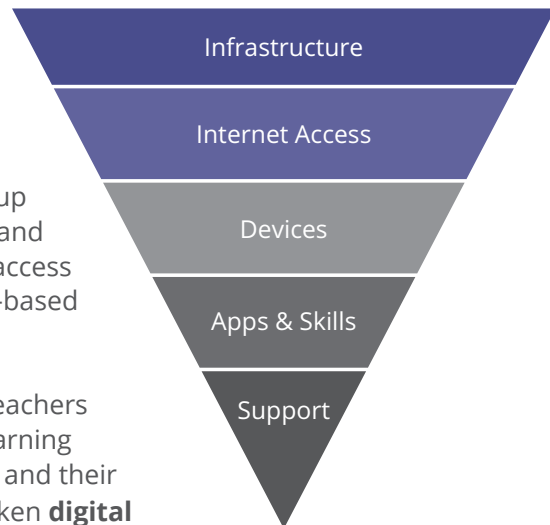
Rochester Educational Opportunities Center • The Children's Agenda



## Closing the Digital Divide

The digital divide has long been a problem in our community. However, with remote learning during the pandemic the impact of the divide was magnified. ROC the Future provided data to our partners that was used to make sure all RCSD students had devices and internet access.

In April and May a coalition of partners successfully distributed **12,096 Chromebooks** and **2,800 MiFi units** to RCSD students in Grades 4 – 12. (RCSD has sufficient MiFi units for all students, but not all families needed them.) When units need repair, there are electronic lockers set up at sites throughout Rochester for secure drop-off and retrieval. Work is also underway to ensure digital access for pre-K families both in RCSD and in community-based programs. *Figure: Digital Divide*



Hardware is only part of the solution, however. Teachers in Rochester stepped up to provide meaningful learning experiences and supportive contact with students and their families. **More than 75%** of RCSD teachers had taken **digital transformation courses** and were prepared to deliver online instruction. Additionally, WXXI provided online content aligned with PBS educational programming and the Rochester Public Library continued its distribution of MiFi units and digital literacy programs.

Much work will be needed in the months and years ahead to ensure that all of Rochester’s children and families have the access, skills, and support they need to learn no matter where they are. The magnitude of the divide will require partners from many sectors, including business, workforce development, post-secondary education, community-based organizations, faith communities, and human services.

### Partners

Black Agenda Group • Common Ground Health • Rochester City School District • Rochester Public Library • WXXI • Children’s Institute

### Funders

1 Million Project • City of Rochester • Rochester Area Community Foundation • United Way of Greater Rochester

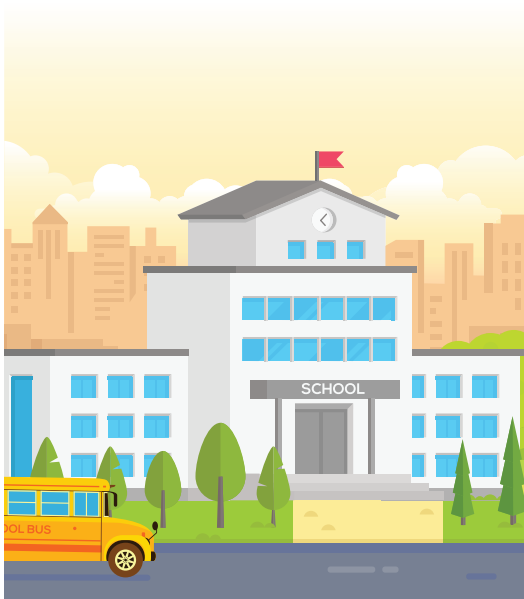
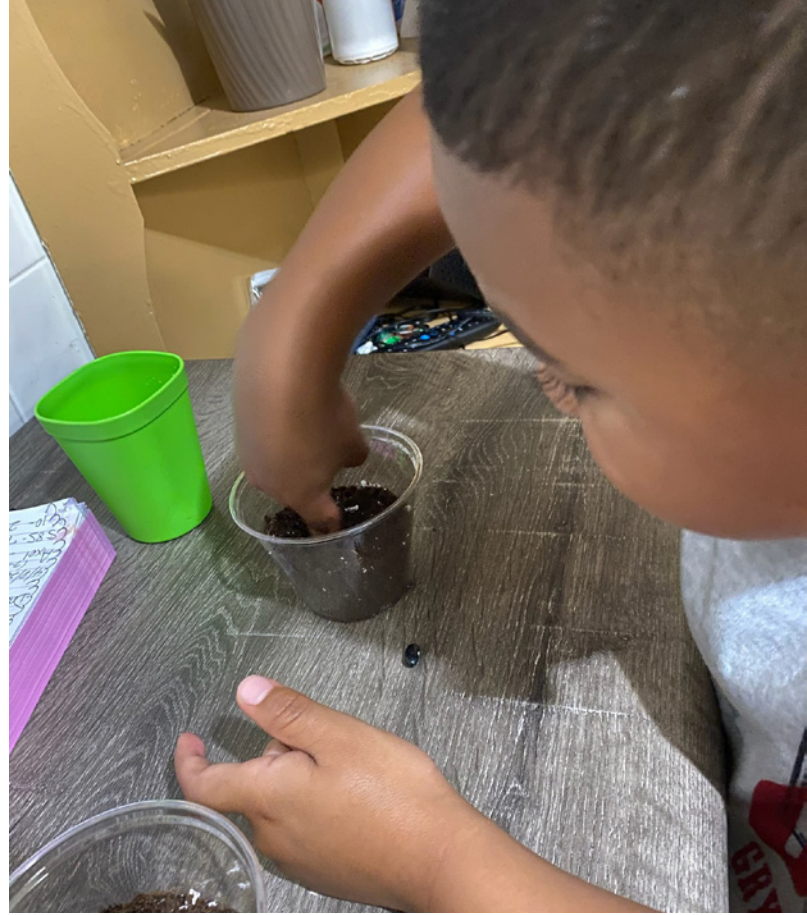
## Re-Opening Schools

Over the summer schools took on the monumental task of planning how to re-open in a way that is safe for students and their families, ensures continuity of education, and attends to the lost learning time and social-emotional impacts of the pandemic.

ROC the Future recognizes that 20% of Rochester children are enrolled in charter schools and many are also enrolled in private and parochial school. Therefore, in the summer we convened representatives from more than 20 schools for meetings with Dr. Michael Mendoza. They were able to receive guidance and share strategies for re-opening.

### Partner

Monroe County Department of Public Health



### Partners

Action for a Better Community • Children's Institute • Coordinated Care Services, Inc. • Florence M. Muller Foundation and Emil Muller Foundation • Frederick Douglass Family Initiatives • Great Schools for All • Greater Rochester After School Alliance • Greater Rochester Chamber of Commerce • Ibero American Action League • Max and Marian Farash Charitable Foundation • Mental Health Association of Rochester • Monroe 1 BOCES • Monroe County Department of Planning and Development • Rochester City School District • Rochester Regional Medical System • Rochester Teachers Association • St. Joseph's Neighborhood Center • The Children's Agenda • United Way of Greater Rochester • University of Rochester • University of Rochester Medical Center • William and Sheila Konar Foundation

## Looking to the Third Horizon

Systems-level change in schools is not only about making the current education system work better. It is also about transforming the system for the future. Our children, especially the youngest, are learning for careers and a world that do not exist yet. To meet this challenge, ROC the Future has formed the Community Commission on Education.

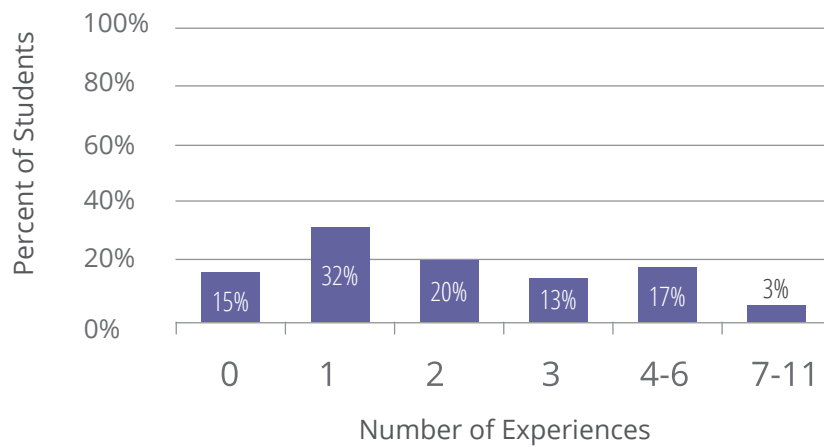
Chaired by Melanie Funchess and Dirk Hightower, the planning group has introduced its goals to community stakeholders and content experts for feedback and interest. The Commission will launch this year with a focus on creating a framework for its work over the next two to three years.



# TRANSFORMING COMMUNITY SYSTEMS

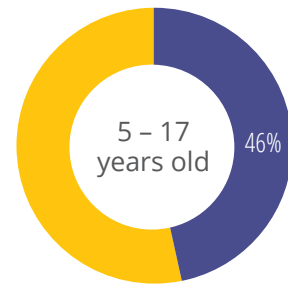
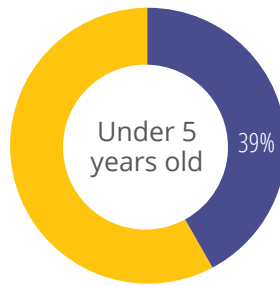
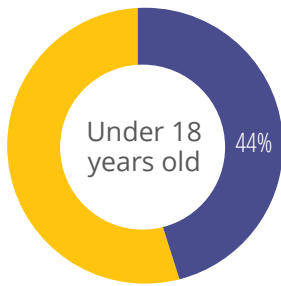
RCS D Students 13+

**REPORTING ADVERSE CHILDHOOD EXPERIENCES, 2019<sup>14</sup>**

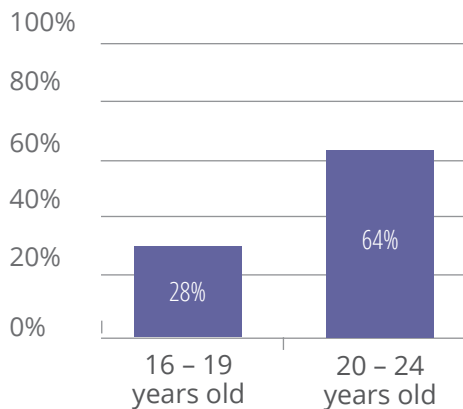


<sup>14</sup> Youth Risk Behavior Survey, Monroe County Health Department

## Rochester Youth LIVING BELOW POVERTY LEVEL, 2018<sup>15</sup>



## Rochester Youth EMPLOYED IN PAST 12 MONTHS, 2018<sup>15</sup>

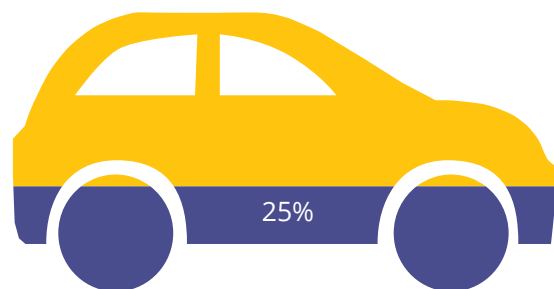


## Rochester Youth MOVED WITHIN THE COUNTY IN PAST 12 MONTHS, 2018<sup>15</sup>

1 - 4 years old	16%
5 - 17 years old	15%
18 - 24 years old	21%

## Rochester Households

**WITH NO VEHICLE, 2018<sup>15</sup>**



Health, economics, transportation, housing - these and other systems all impact education outcomes. That is why ROC the Future participates in the Systems Integration Project. This project is building an interconnected, person-centered system of health, human service and education. Its goal is to improve the well-being of individuals and families, especially those who are vulnerable or impacted by poverty. A cross-systems approach can be seen in a number of initiatives ROC the Future supported last year.

<sup>14</sup> Youth Risk Behavior Survey, Monroe County Health Department

<sup>15</sup> US Census Bureau



## Connecting Health and Education

ROC the Future strengthened the connections between pediatric health and education by inviting the Department of Pediatrics at URM and Rochester Regional to join our collective as a Convener. Their addition ensures that strategic decisions will be informed by health perspectives and it opens up possibilities for new partnerships.

During the pandemic, the importance of health – education partnerships quickly became clear as families were challenged by how to safely access well-child and immunization visits. Building on the relationships and understanding that have grown out of the Systems Integration Project, the pediatric community and Rochester Transit System launched a way of safely transporting families to pediatric appointments. ROC the Future created a public awareness campaign that delivered the message that “Doctors Are Open” through social media, parent networks, school personnel, and radio. ROC the Future is also working with pediatricians on forming stronger ties between pediatric behavioral health care and schools.

**At the Office, Clinic or Hospital -- Doctors are OPEN!**

- SAFE TRANSIT**  
If you need a ride for a well-child visit, let the doctor's office know when you make your appointment. They can schedule an RTS shuttle to pick you up. You and your child can ride for free on a van with no crowds. Clean. Easy. Safe.
- SAFE CARE**  
When you get to the doctor's office or hospital, you will get safe, secure care, like always. You will have space while you wait. Staff will wear masks. Chairs, tables, and other surfaces are cleaned regularly. Safe. Confident. Caring.
- HEALTHY KIDS**  
We will make sure your child is healthy and on track. We will check their eyesight and hearing, see how they are growing, talk with them, and make them smile.  
We are here for you, too. We will answer your questions and make sure you have what you need to take care of your family. Caring. Supportive. Always.

**Focused on children's success. Together.**

**ROC THE FUTURE**

### Partners

Accountable Health Partners • Children's Institute • Department of Pediatrics at University of Rochester and Rochester Regional • Mt. Hope Family Center • Rochester Transit System

## Connecting to Out of School Time

Children spend many hours and days outside of school. Whether that time is spent in academic enrichment, arts or STEM programs, work experience, sports and recreation, outdoor experiences, or at libraries – effective out of school learning can make a difference.

Last year, out of school time initiatives included:

- ✓ City of Rochester ROC Kids Read expansion to include a multi-sensory reading program serving 200 children at R-Centers
- ✓ Proposal by the Greater Rochester After School and Summer Alliance to develop an inventory and analysis of equitable, scalable, and sustainable out of school time systems
- ✓ Selection by KaBOOM!, a national nonprofit that works to ensure every child and all communities have equitable access to quality play spaces, to build a new playground in Rochester



### Partners

Greater Rochester After School and Summer Alliance • Greater Rochester Summer Learning Association • City of Rochester

### Funders

City of Rochester • ESL Charitable Foundation • Greater Rochester Health Foundation • KaBOOM! • Max and Marian Farash Charitable Foundation • Rochester Area Community Foundation • Rochester City School District • Rochester – Monroe County Youth Bureau • Rochester Works! • United Way of Greater Rochester • Wilson Foundation





# YOU CAN MAKE A DIFFERENCE...

**Businesses** Provide paid time off for parents to attend school conferences • Host book drives

• Require teen employees to attend school and have passing grades • Put children's books in waiting areas • Provide on-site child care • Pay livable wages • Provide paid time off for children's medical and dental appointments • Offer high school internships and summer employment **Child Care**

**Providers** Get training on developmental milestones • Refer children for developmental screenings when needed • Read with children everyday • Teach children social and emotional skills • Use Ready Rosie videos **Coaches**

Require players to attend school and have passing grades • Connect players who are struggling in school with tutoring and support services • Expect positive behavior on and off the field **Faith Communities**

Host book drives • Provide after school, weekend and summer programs for children • Mentor youth **Government** Invest in youth development programs • Prioritize affordable housing • Build neighborhood playgrounds • Put mini-play spaces at major bus stops

• Invest in the early childhood and youth development workforce • Train all recreation staff in social-emotional learning and trauma-informed practices • Hire more teen literacy aides • Invest in community-wide literacy projects • Invest in universal pre-kindergarten programs for 3-year olds and 4-year olds **Medical Professionals**

Ask parents and children about school attendance • Conduct comprehensive developmental screenings and refer children when further evaluation is needed • Teach parents about developmental milestones • Give children books to take home when you see them for an appointment **Property Owners**

Keep sidewalks cleared in the winter for children walking to school • Provide new renters a welcome basket with children's books • Maintain outdoor playspace on your property • Provide free wi-fi to tenants **Neighbors**

Help parents get their children to school • Ask teenagers why they aren't in school • Host reading parties on your front porch • Ask neighborhood children what funny or interesting thing happened at school today **Parents and Families**

Read to your child daily from birth through eight years • Get a library card • Take your child to the library regularly • Visit city parks • Take your child for a hike • Take your child to the beach • Visit a museum • Cook with your child • Use Ready Rosie videos • Take your child to doctor and dental check-ups every year • Learn about developmental milestones • Get to know your child's teachers • Get your child to school every day • Get to know the parents of your child's friends • Make sure your child has a designated place and time to do homework • Ask for help when you need it **Philanthropists**

Align your funding priorities with cradle-to-career outcomes • Provide resources for evaluation of process and outcomes

# THANK YOU...

**Conveners** for setting strategic priorities, providing leadership, and elevating educational priorities in the community

Action for a Better Community • Assemblymember Harry Bronson • Center for Governmental Research • Children's Institute • City of Rochester • Common Ground Health • Community Advisory Council • Congressman Joe Morelle • Department of Pediatrics at Rochester Regional Health and University of Rochester Medical Center • East High School in Partnership with the University of Rochester • ESL Charitable Foundation • Farash Foundation • Great Schools for All • Greater Rochester After School Alliance • Greater Rochester Chamber of Commerce • Greater Rochester Health Foundation • Healthy Baby Network • Ibero American Action League • JPMorgan Chase • Monroe Community College • Monroe County Department of Human Services • Nazareth College • New York Charter Schools Association • NYS Senator Joe Robach • Rochester Area Community Foundation • Rochester City Council • Rochester City School Board • Rochester City School District • Rochester Education Foundation • Rochester Educational Opportunity Center • Rochester-Monroe Anti-Poverty Initiative • Rochester Public Library • St. John Fisher College • The Children's Agenda • The College at Brockport • United Way of Greater Rochester • University of Rochester

**Outcomes Teams** for identifying factors and root causes, identifying measurable outcomes, measuring impact, and providing recommendations

School Readiness Outcomes Team • Early Grade Literacy Outcomes Team • High School Graduation Outcomes Team • Community Schools Leadership Team • Community Commission on the Future of Public Education

**Strategy Teams** for developing solutions, developing strategic initiatives, and driving implementation

Children Developmentally on Track • Community Partnerships • Edison Tech • GROW • Prenatal to 3 • School 5 • School 19 • School 39 • Wilson Baccalaureate • Workforce Development

**Collaborative Action Networks** for coordinating initiatives and activities that cut across the cradle to career continuum

Expanded Learning Opportunities • Parent Engagement • Perinatal • Readiness for College • School Attendance Leadership Team

**Funders** for making all of this possible

City of Rochester • ESL Charitable Foundation • Gray Lokey, CPA • Greater Rochester Health Foundation • Hallowell Fund • Max and Marian Farash Charitable Foundation • Rochester Area Community Foundation • Strive Together • United Way of Greater Rochester • Wolk Foundation



Jackie Campbell, MS  
*Alliance Director*

Stephanie Townsend, PhD  
*Director of Research & Analytics*

Camille Simmons, MSL  
*Manager of Continuous Improvement*

Tanishia Johnson, MEd  
*Manager of Family & Community Engagement*

Kilolo Moyo-White, MA  
*Family & Community Engagement Specialist*

Jessica Lewis, MEd  
*Communications Specialist*

Ryan Lavoie  
*Administrative & Grants Assistant*

REPORT CARD DESIGNED BY





1 SOUTH WASHINGTON STREET, SUITE 120, ROCHESTER, NEW YORK 14614  
585.256.2620 | [ROCthefuture.org](http://ROCthefuture.org)